

REPAIRING YOUR PLANE

If damaged, repair any foam part that breaks with a small piece of clear tape.



TROUBLESHOOTING

ELECTRIC MOTOR DOES NOT RUN OR LOW POWER

Switch not turned ON -----	Turn switch ON
Plane is not charged -----	Charge plane
Batteries in charger need replacement-----	Replace batteries in charger
Debris stuck in propeller-----	Check and clean
3 channel selector set on different channel than plane-----	Change 3-band selector to same channel as plane.

RUDDER DOES NOT MOVE WHEN CONTROL STICK MOVED

Plane is not charged-----	Charge plane
Batteries in charger need replacement-----	Replace batteries in charger
Damage to tail-----	Check to see that the rudder moves freely by tilting plane left and right.

SHORT FLIGHT TIME

Plane is not fully charged-----	Charge plane
---------------------------------	--------------

ERRATIC, LITTLE, OR NO CONTROL SIGNAL

Too much direct sunlight affecting signal-----	Close windows/blinds
Compact fluorescent lights can interfere with the signal-----	Turn off fluorescent lights.
Other remote control signals operating near by -----	Move to a new location or stop using TV remote.

90 DAY LIMITED WARRANTY

Do not return your plane to the store. Estes will repair or replace factory defects for 90 days from the date of purchase. This warranty specifically does not cover crash damage or abuse.

For fast courteous service, if you find a defect or a part is missing, please contact Estes Customer Service at www.estesrockets.com or call 1-800-525-7561.

Obtain a Return Merchandise Authorization (RMA) number from Estes Customer Service before returning a defective part or product. Any part or product returned to Estes without a RMA number clearly marked on the shipping label will not be accepted. Send only the defective part(s). There may be additional charges if you send more than is necessary. **Ship returns to: Estes-Cox Corp., 1295 H St, PO Box 227, Penrose, CO 81240-0227.**

This warranty applies only if the product is operated in compliance with instructions and warnings provided with each model. Estes-Cox assumes no liability except for the exclusive remedy of repair or replacement of parts as specified above. Estes shall not be liable for consequential or incidental damages. Some states do not allow the exclusion of incidental or consequential damages so the above exclusion may not apply to you. This warranty gives you specific legal rights and you may also have other rights, which vary from state to state.



www.estesrockets.com
ESTES-COX CORP.
1295 H Street, P.O. Box 227
Penrose, CO 81240-0227
PRINTED IN CHINA

WARNING:

Choking/Cutting Hazard—
small parts, sharp propeller.
Not for children under 8 yrs.

SHOCKWAVE™

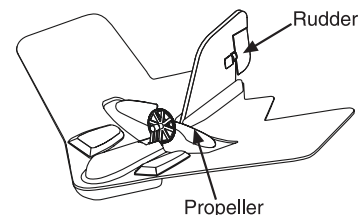
Indoor IR Remote Control Micro-Flyer

KEEP FOR FUTURE REFERENCE

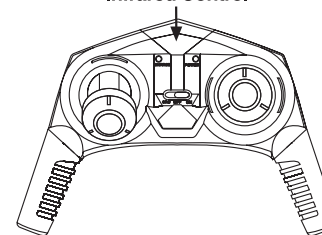


#4190

ITEMS INCLUDED



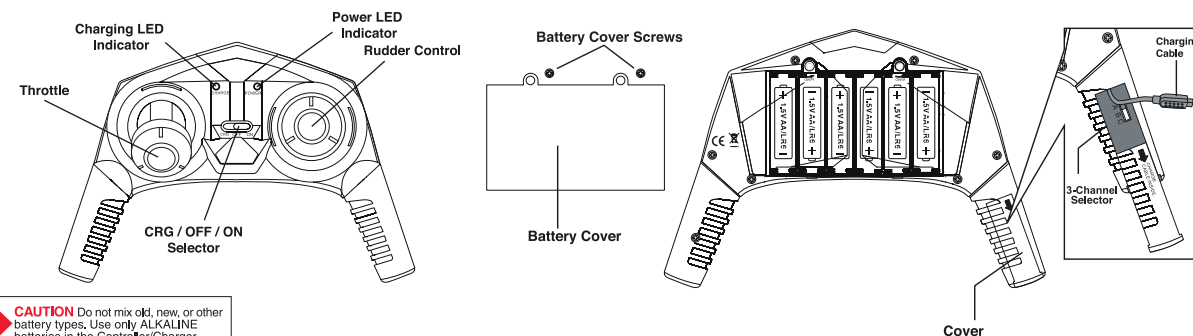
Infrared Control



Shockwave™ Micro-flyer.....1
Controller.....1

CONTROLLER WITH BUILT IN CHARGER

(Requires 6 - AA Alkaline Batteries - Sold Separately)



CAUTION Do not mix old, new, or other battery types. Use only ALKALINE batteries in the Controller/Charger.

IMPORTANT USER INFORMATION

This equipment has been tested and found to comply with the limits for a Class B digital device, pursuant to Part 15 of the FCC Rules. These limits are designed to provide reasonable protection against harmful interference in a residential installation.

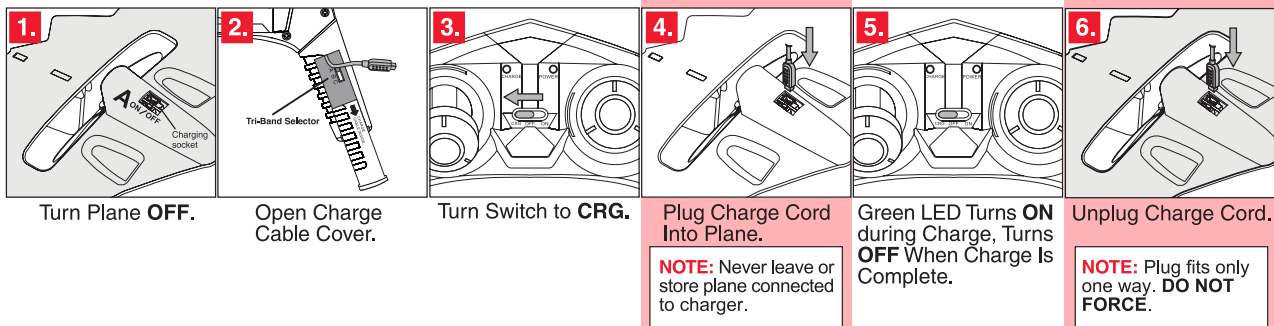
This equipment generates, uses and can radiate radio frequency energy. If not used in accordance with the instructions, it may cause harmful interference to radio communications. However, there is no guarantee that interference will not occur in a particular installation. If this equipment does cause harmful interference to radio or television reception, which can be determined by turning the device on and off, the user is encouraged to try to correct the interference by one or more of the following measures:

- Increase the separation between the device and receiver.
- Consult Estes-Cox Corporation for help.

Caution: Changes or modification not expressly approved by the party responsible for compliance could void the user's authority to operate the equipment.

CHARGING THE PLANE

Your plane contains 1 non-removable 3.7 Volt Lithium-Polymer (Li-Po) battery. **CHARGE TIME APPROX. 15 MINUTES. NEVER CHARGE MORE THAN 25 MINUTES.**



! WARNING: TO AVOID INJURY AND PROPERTY DAMAGE:

PROPELLER BLADE SAFETY:

- Keep your face, fingers, clothing and other objects away from the propeller blade at all times.
- Keep spectators behind and away from plane at all times.
- Before each flight, make certain propeller blade is securely attached to your plane.

- After each flight, inspect the propeller blade for nicks and breaks.
- **DO NOT USE** if propeller is nicked, chipped, cracked or broken.
- Use only the propeller on the plane.
- Do not alter, modify or customize the propeller blade.

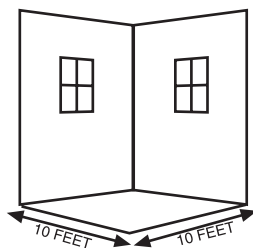
BATTERY AND CHARGING SAFETY:

*This plane contains 1 non-removable, non-replaceable 3.7 Volt Lithium-Polymer (Li-Po) battery. **Li-Po batteries are easily damaged and may cause fire or explode.** To prevent injury to the battery or you, please read the following precautions.*

- Use only the transmitter/charger supplied to charge the plane.
- Do not reverse polarity while plugging into charger.
- Do not leave plane unattended while charging.
- Never leave or store plane connected to transmitter/charger.
- If plane's internal battery becomes hot, smells, makes a sound, or leaks fluid, disconnect from charger and **DO NOT USE**.

- An adult must be present during charging.
- If battery fluid gets on skin, rinse well with water.
- Do not incinerate plane or its battery.
- Do not short-circuit.
- Keep away from small children.
- Charge, discharge (use) and store at temperatures above freezing and below 113 F (45 C).
- Do not store near flame or sources of heat such as inside a hot car.
- Should the plane's battery become damaged, deformed, or punctured, do not use the plane.
- Protect the plane from getting wet.
- Charge in a fire-proof location away from combustibles.

FLYING INDOORS



10 FEET x 10 FEET (3 m x 3 m) MINIMUM ROOM SIZE

Shockwave™ Indoor R/C Micro-flyer is for flying **INDOORS** only! To avoid losing control and causing damage to your plane, **DO NOT** fly outside.



CAUTION: DO NOT fly in a room with a ceiling fan!



DO NOT fly outside! Avoid direct sunlight!



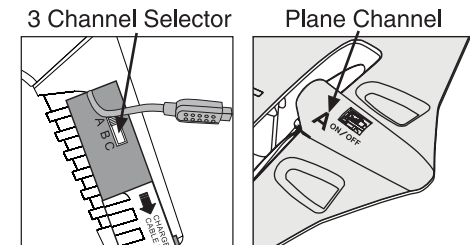
Turn air conditioning off or to low. Strong AC current will interfere with flight performance.

NOTE: ALWAYS aim your Controller directly at the Shockwave™ to control flight.

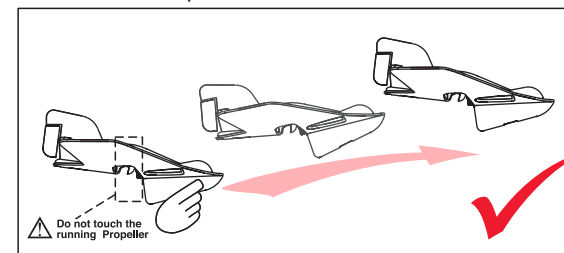
NOTE: Some fluorescent lighting will cause interference with flight performance.

HOW TO FLY

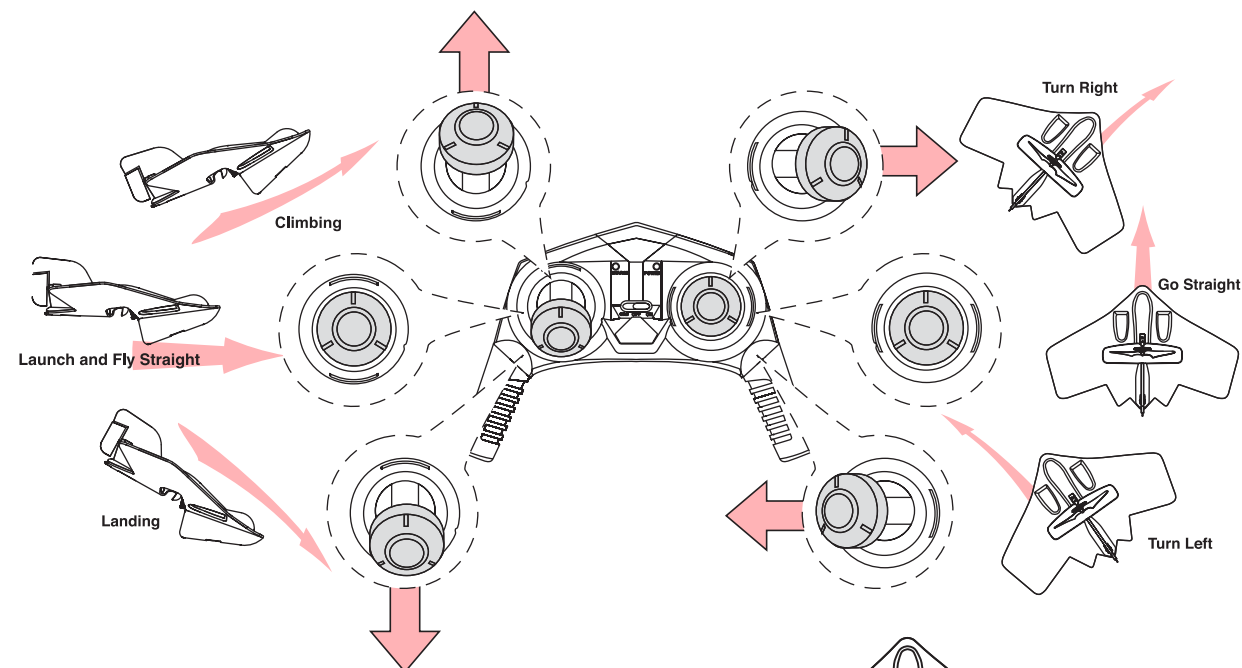
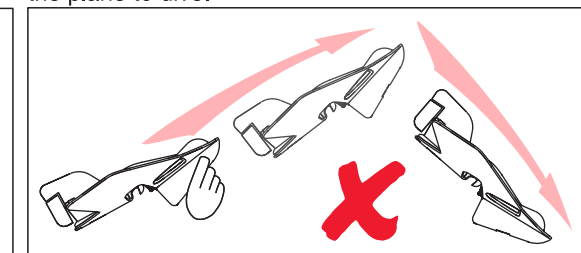
1. Set the 3 channel selector (A,B, or C) to the same channel as printed on bottom of plane (A,B, or C).
2. Check propeller to be sure it's clear of debris.
3. Clear hands from propeller. With a fully charged plane turn **ON**, and then turn controller **ON**.
4. Lightly move throttle and rudder control sticks to check proper propeller and rudder functionality.
5. Keep throttle at half speed when launching plane. Press throttle to full speed when turning.



Launch at half speed.



Throwing too high or launching at full speed will cause the plane to dive.



Flying tips:

To make the plane fly left easily, apply tape to the rear left edge of the plane. To make the plane fly right easily, apply tape to the rear right edge of the plane.

