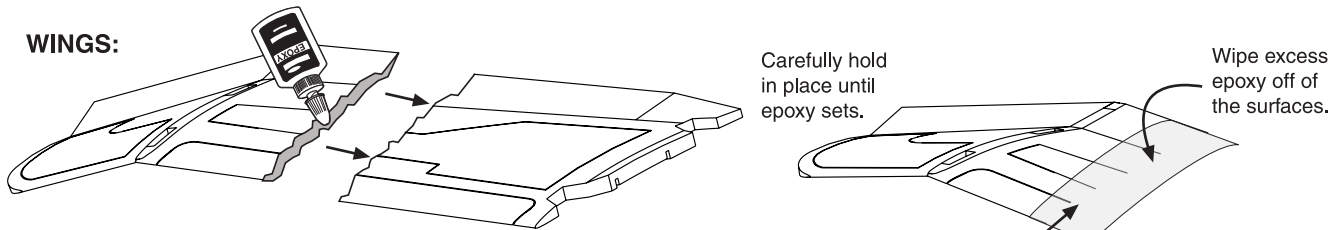


EASY REPAIRS YOU CAN DO YOURSELF

Your plane is easy to repair. If damaged, repair any foam part that breaks with white glue or 5 - minute epoxy and/or clear packing tape (sold separately at hardware or hobby stores). Other types of glue may damage the plane. Review the illustrations below.

WINGS:



Carefully hold in place until epoxy sets.

Wipe excess epoxy off of the surfaces.

TAIL:

Reinforce with clear tape.

Use clear tape to repair dents and tears.

FUSELAGE:

Like the wing, apply epoxy to the broken area and hold the two pieces together until epoxy sets and dries.

KEEP FUSELAGE STRAIGHT

TROUBLESHOOTING

ELECTRIC MOTOR DOES NOT RUN OR HAS LOW POWER:

- TX and/or plane switch not turned **ON** → Turn switch **ON**.
- Plane not charged → Charge plane.
- Batteries in charger need replacement → Replace batteries in charger.
- Propeller jammed → Pull propeller 1/16 in. (1.5 mm) away from motor housing.
- Debris stuck behind propeller → Check and clean.

SHORT FLIGHT TIME:

- Plane not fully charged → Recharge Plane.
- Batteries in charger need replacement → Replace batteries in charger.

ERRATIC, LITTLE OR NO RADIO CONTROL

- Other transmitters (CB's, RC Cars or Boats) operating on same frequency near by → Move to a new location.
- Transmitter batteries low → Replace batteries.
- Plane not charged → Recharge Plane.

ONLINE FLIGHT SIMULATOR

Practice flying a Sky Rangers® R/C plane with our On-Line Flight Simulator. (Planes on Flight Simulator will vary)



To download, go to www.estesrockets.com. Click *Airplanes*. Click *Flight School*. Scroll down to *Sky Rangers Flight Simulator*. Click *Sky Rangers Flight Simulator* for propeller planes; *Sky Rangers Jet Simulator* for ducted fan planes or download both! Have fun!



If you've enjoyed flying the Viper®, view our COX Hobby Products line at www.coxmodels.com for more advanced flying opportunities!

F4U Corsair® R/C Airplane RTF Set



Cox Item# 006300

Corsair is a licensed trademark of Northrop Grumman

© 2007 Estes-Cox Corp. All rights reserved.

PN 64699 (6-08)



www.estesrockets.com

ESTES-COX CORP.
1295 H Street, P.O. Box 227
Penrose, CO 81240-0227
PRINTED IN CHINA

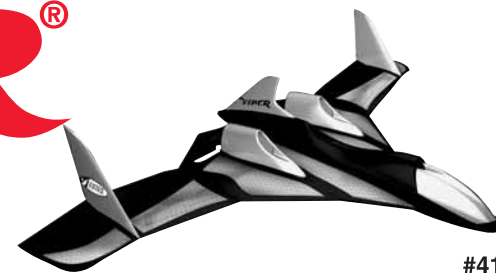
WARNING:

Choking/Cutting Hazard - small parts, sharp propeller. Not for children under 8 yrs.



Radio Control Airplane Instruction Manual

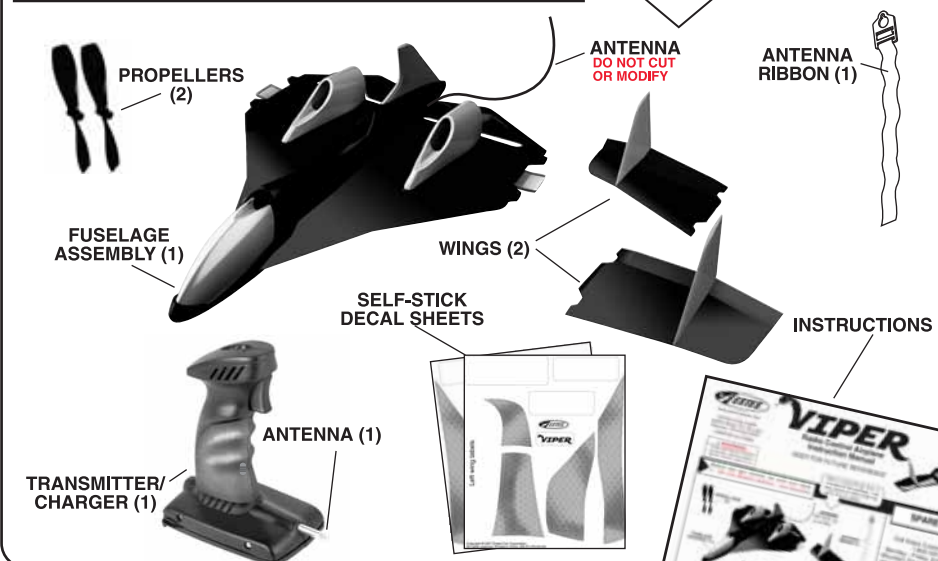
KEEP FOR FUTURE REFERENCE



#4181

Here's everything that is included in the package. Use this picture to help locate the parts of your plane.

Before you get started, be sure you have:
6 - AA size Alkaline batteries - sold separately



SPARE PARTS

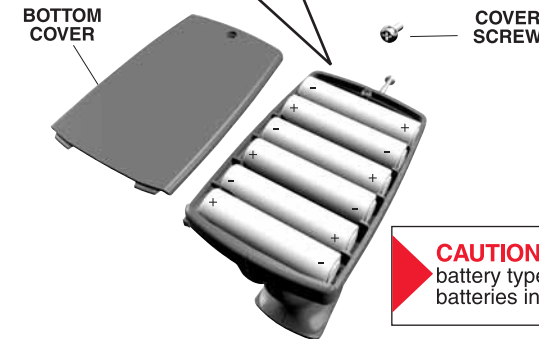
Call Estes Customer Service at 1-800-525-7561.
or order parts on-line at www.estesrockets.com, click on Customer Service then Replacement Parts.

Item #	Description
064796	Fuselage Assembly with Self-Stick Decal Sheets
064795	Left and Right Wings with Self-Stick Decal Sheets
064797	6 Propellers (3 sets)
063810	Transmitter/Charger with Antenna
064149	Antenna
064744	Antenna Ribbon

CONTROLLER/TRANSMITTER (TX) WITH BUILT-IN CHARGER

(Requires 6 - AA Alkaline Batteries - Sold Separately)

Remove screw and bottom cover. Insert 6 new AA alkaline batteries in the correct polarity into the TX. Replace back cover and screw.



Turn Control. See **M.A.S.C.™ (page 3)** before flying.

CAUTION Do not mix old, new, or other battery types. Use only ALKALINE batteries in the TX.

Switch **ON** for flying; **CHG** for charging, and **OFF** for power off.

Power LED (Red)

Charge LED (Green)

Speed Control Trigger. See **Speed Control (page 3)** before flying.

Attach Antenna Ribbon to Antenna.

IMPORTANT USER INFORMATION

This radio system complies with Part 95 of the F.C.C. rules. Operation is subject to the following two conditions:

- 1) This radio system may not cause harmful interference.
 - 2) This radio system must accept any interference received, including interference that may cause undesired operation.
- Changes or modifications of any kind to the transmitter not expressly approved by Estes-Cox Corp. will void the user's authority to operate the transmitter. Transmitter frequency can only be changed and the associated electronic circuitry tuned by Estes-Cox Corp. Changing frequency by the consumer will void the warranty and is a violation of F.C.C. regulations. Do not cut or shorten the length of the transmitter antenna or receiver antenna wire on the back of the plane. Doing so greatly reduces the operational range of the radio system. Refer to label on back of transmitter for operating frequency. Do not fly or operate more than one R/C plane or vehicle on the same frequency at a time. Operational interference may occur.

WARNING:

TO AVOID INJURY AND PROPERTY DAMAGE:

BATTERY AND CHARGING SAFETY:

This plane contains a non-removable, non-replaceable 4.8 Volt Nickel-Metal Hydride (NiMH) battery. To prevent possible injury to the battery or you, read the following precautions. Battery should be recycled.

- Do not open battery – may burst and release toxic liquids.
- Use only the Transmitter/Charger supplied to charge the battery.
- Check plane continuously during charging.

- Do not leave plane unattended during charging.
- Never leave or store plane connected to transmitter/charger.
- If plane gets hot, makes a popping sound, or leaks liquid during a charge, disconnect from charger immediately.
- Do not short circuit plane or plane charger.
- Dispose of plane properly – do not incinerate or burn.
- Turn plane off when not in use.

PROPELLER SAFETY:

- Keep your face, fingers, clothing and other objects away from the propellers at all times.
- Keep spectators behind and away from plane at all times.
- Before each flight, make certain propellers are securely attached to your plane

- After each flight, inspect the propellers for nicks and breaks.
- Discard and replace nicked, chipped, cracked or broken propellers.
- Use only the propellers supplied with the plane.
- Do not alter, modify or customize the propellers.

90 DAY LIMITED WARRANTY

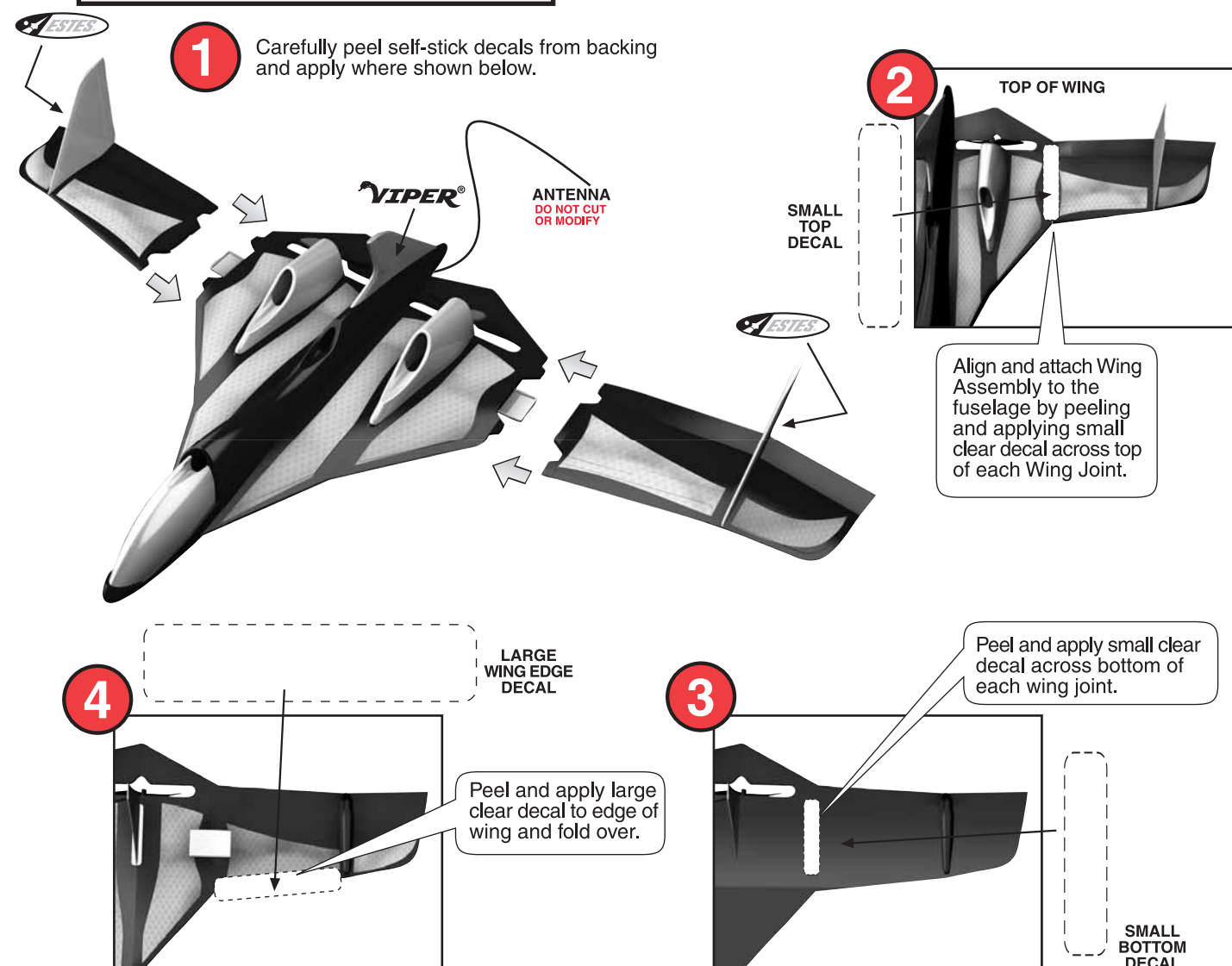
Do not return your plane to the store. Estes will repair or replace factory defects for 90 days from the date of purchase. This warranty specifically does not cover crash damage or abuse.

For fast courteous service, if you find a defect or a part is missing, please contact Estes Customer Service at www.estesrockets.com.

Obtain a Return Merchandise Authorization (RMA) number from Estes Customer Service before returning a defective part or product. Any part or product returned to Estes without a RMA number clearly marked on the shipping label will not be accepted. Send only the defective part(s). There may be additional charges if you send more than is necessary. **Ship returns to: Estes-Cox Corp., 1295 H St, PO BOX 227, Penrose, CO 81240.**

This warranty applies only if the product is operated in compliance with instructions and warnings provided with each model. Estes-Cox assumes no liability except for the exclusive remedy of repair or replacement of parts as specified above. Estes shall not be liable for consequential or incidental damages. Some states do not allow the exclusion of incidental or consequential damages so the above exclusion may not apply to you. This warranty gives you specific legal rights and you may also have other rights, which vary from state to state.

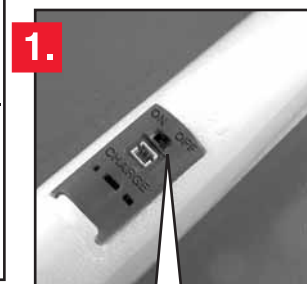
AIRPLANE ASSEMBLY



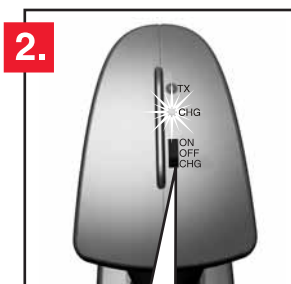
CHARGING THE PLANE

CHARGING INSTRUCTIONS:

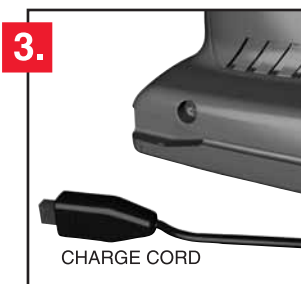
1. Turn plane switch to **OFF**.
2. Turn TX/Charger switch to **CHG**. Green LED **BLINKS**.
3. Unsnap charge cord from TX/Charger.
4. Plug charge cord into plane(**DO NOT FORCE**). Green LED on TX will turn **SOLID**.
5. Charge plane until Green LED **BLINKS**. (Approx. 25 minutes).
6. Unplug charge cord from plane, and snap cord onto TX/Charger.



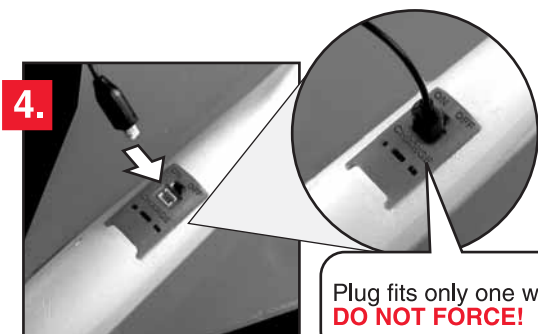
Switch to **OFF**.



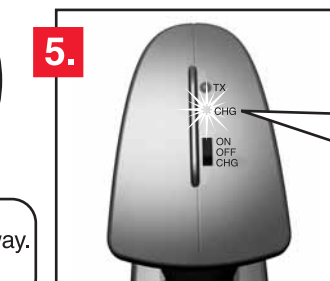
Switch to **CHG**. Green LED **BLINKS**.



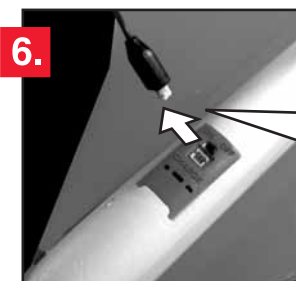
CHARGE CORD



Plug fits only one way. **DO NOT FORCE!**



Green LED turns **SOLID** during charge. **BLINKS** when charge is complete.

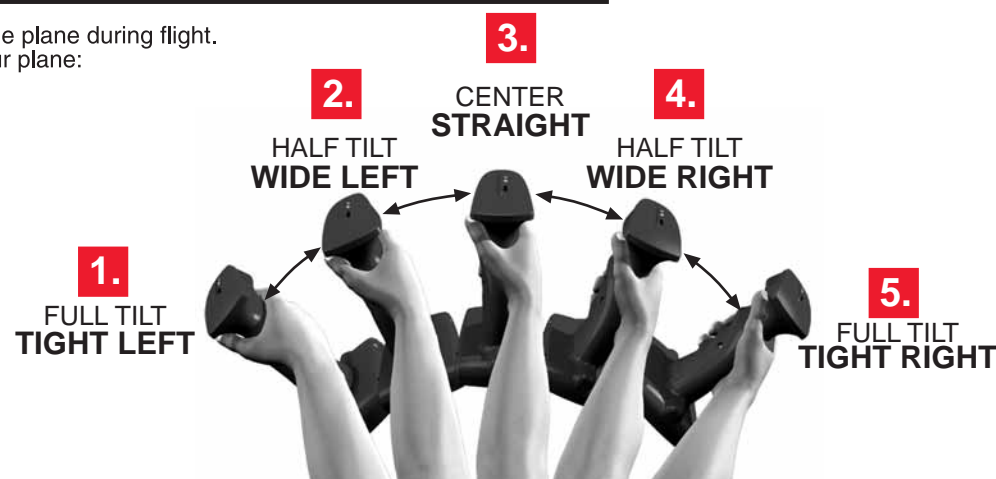


NOTE: Never leave or store plane connected to charger.

M.A.S.C.™ - MOTION AUTO SENSING CONTROL

Tilt the controller left and right to steer the plane during flight. There are five tilt positions to control your plane:

1. Full left tilt: Tight left turn.
2. Half left tilt: Wide left turn.
3. Center: Straight.
4. Half right tilt: Wide right turn.
5. Full right tilt: Tight right turn.



SPEED CONTROL

Your M.A.S.C.™ controller/charger has three motor speeds. As you pull the trigger you will pass through Neutral, then Slow, then Fast. At each speed you will hear a higher pitch of the motors, which indicates the increase in speed.

- Trigger Released: No control, no power.
- Neutral Speed: Turn control only, motors will pulse with controller tilted.
- Slow Speed: Motors run at half power.
- Fast Speed: Motors run at full power.

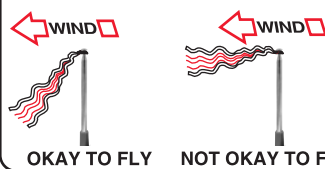


FLYING YOUR PLANE - READ AND STUDY THESE INSTRUCTIONS *BEFORE YOU FLY!*

PRE-FLIGHT CHECKLIST

1. Have a fully charged plane.
2. Fully extend transmitter antenna.
3. Check wind speed and direction using *wind indicator*.
4. Turn transmitter switch ON.
5. Turn plane switch ON.
6. Check controls by pulling the trigger and tilting the transmitter left and right.

USING THE WIND INDICATOR



IMPORTANT:

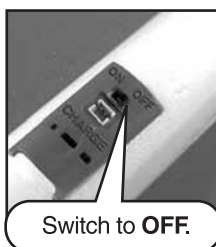
Squeeze the trigger tightly when launching your plane and be sure your M.A.S.C./TX is UPRIGHT for full speed. Tilting your M.A.S.C./TX during launch will decrease the speed of one of the motors, preventing take-off, and causing your plane's motors to make a pulsing sound.

SAFETY PRECAUTIONS:

1. ALWAYS fly in soft grassy fields, like a soccer field. DO NOT fly in parking lots or streets.
2. NEVER fly near power lines, trees, houses, or buildings.
3. DO NOT fly in winds over 5 MPH (8 KPH).
4. ALWAYS keep hands, face, and clothing away from propellers.
5. ALWAYS have spectators stand behind the pilot during flight.

7.

Switch plane to OFF when not in use.

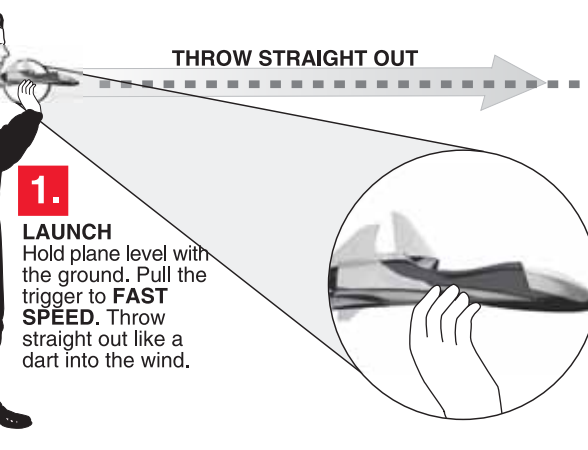


Switch to **OFF**.

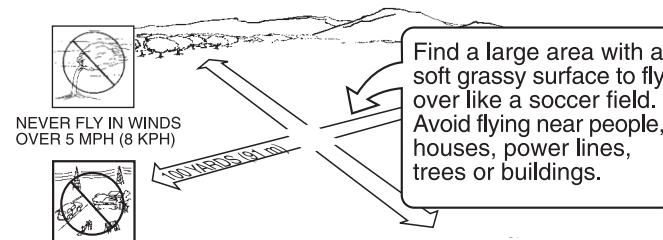
6.

LANDING

Release the trigger. Pull the trigger to **SLOW SPEED** when needed to keep the nose up during landing until touchdown.



CHOOSE A GOOD FLYING SITE:



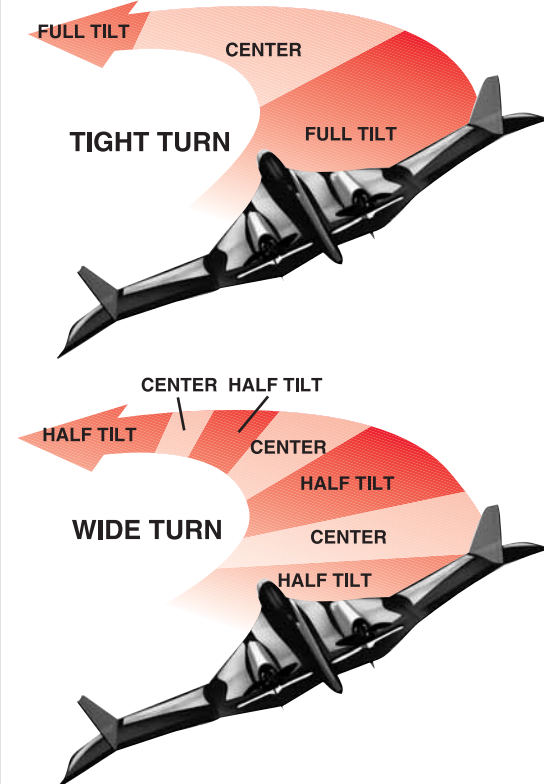
5.

PREPARE TO LAND

Release trigger to **SLOW SPEED** to reduce speed. Tilt **half left** or **half right** if needed to level wings.

STEERING YOUR PLANE

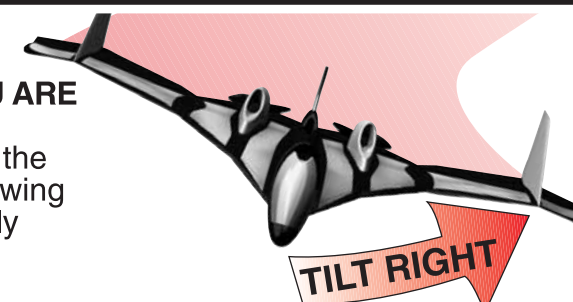
- DO NOT continuously hold the M.A.S.C.™ controller in a tilted position. This over-steering may cause your Viper® to get into a tight spiral turn, resulting in a crash. The longer you tilt the M.A.S.C.™ controller the tighter the turn. The further you tilt your M.A.S.C.™ controller the tighter the turn.



- Only tilt the M.A.S.C.™ controller enough to bank (lower) the wing for a turn, and then return to center. Once the wing is banked the plane will continue to turn. You DO NOT have to hold the M.A.S.C.™ controller tilted. Tilt the controller in the opposite direction of the turn to level wings and fly straight.

CONTROLLING THE PLANE FLYING AT YOU!

REMEMBER – YOU ARE IN THE COCKPIT!
Tilt the controller in the direction of the low wing to level wings and fly straight.



FLIGHT RANGE TESTING

1. DO NOT extend your antenna.
2. Make sure both the airplane and controller are in the **OFF** position.
3. Turn the switch on the airplane to the **ON** position.
4. Turn the controller to the **ON** position and **DO NOT** extend the antenna.
5. Mount your plane to something solid to keep the plane from moving or the propellers from breaking. If you have a second person have them hold the plane by the nose (keep hands away from propellers).
6. Start walking away from the plane.
7. Pull the trigger and tilt the controller, checking your plane every few feet for response.
8. Walk out about 30 to 50 feet (15 to 25 paces); if you maintain reception your plane will be fine. If you start losing reception after a few feet, then please e-mail us for assistance.

TRIMMING THE PLANE FOR FLIGHT

