



www.estesrockets.com
ESTES-COX CORP.
1295 H Street
Penrose, CO 81240
Printed in China

Blue Angels ROG

Radio Control Model Airplane - Instruction Sheet - KEEP FOR FUTURE REFERENCE



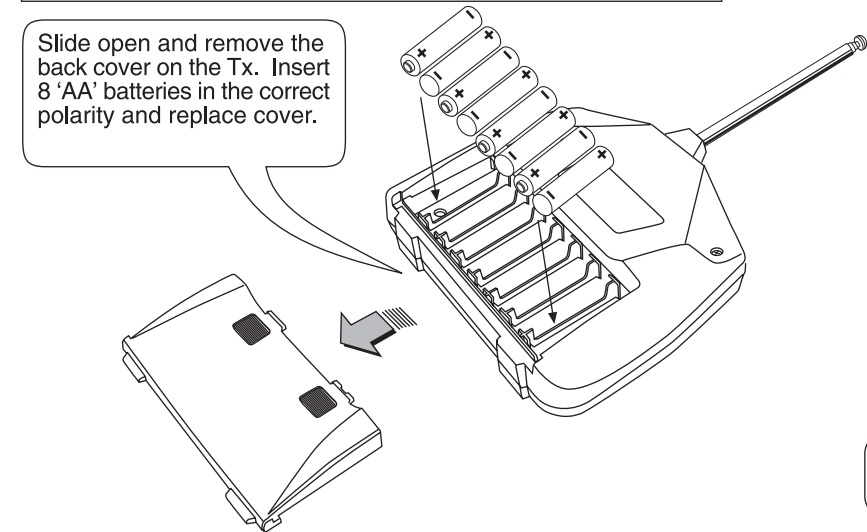
#4148

THE FLIGHT COMMAND™ TRANSMITTER (Tx)

(Requires 8 - 'AA' Alkaline Batteries - Sold Separately)

CAUTION: Do not mix old, new, or other battery types. Use only ALKALINE batteries. Remove batteries from unit when storing for long periods.

Slide open and remove the back cover on the Tx. Insert 8 'AA' batteries in the correct polarity and replace cover.

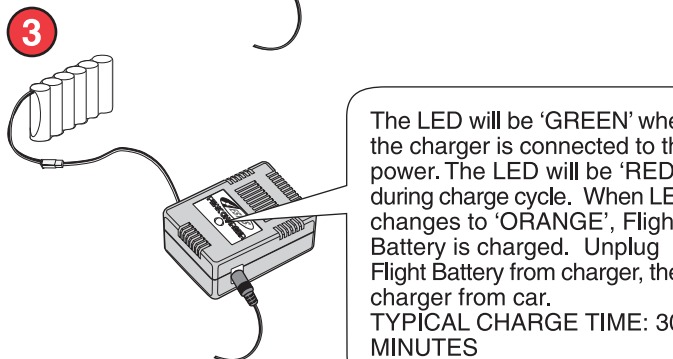
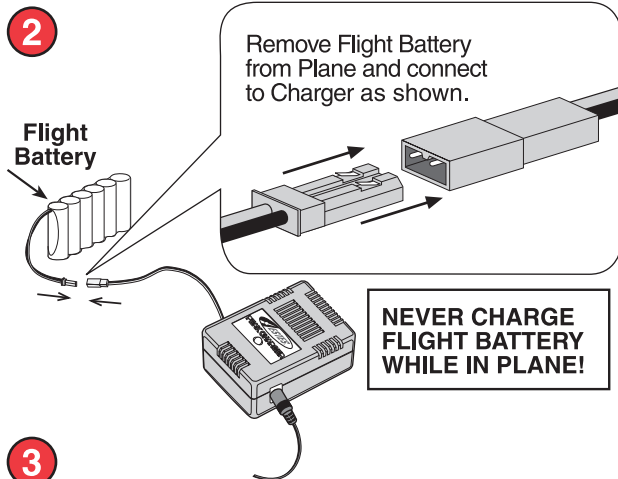
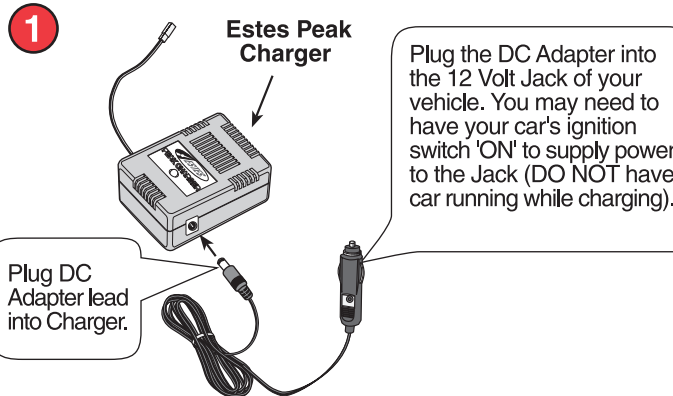


R/C USER INFORMATION

The Flight Command™ radio system complies with Part 95 of the FCC rules. Operation is subject to the following two conditions:

- 1) This radio system may not cause harmful interference.
 - 2) This radio system must accept any interference received, including interference that may cause undesired operation.
- Changes or modifications of any kind to the transmitter not expressly approved by Estes-Cox Corp. will void the user's authority to operate the transmitter. Transmitter frequency can only be changed and the associated electronic circuitry tuned by Estes-Cox Corp. Changing frequency by the consumer will void the warranty and is a violation of F.C.C. regulations. Do not cut or shorten the length of the transmitter or receiver antenna. Doing so greatly reduces the operational range of the radio system. Refer to label on back of transmitter for operating frequency. Do not fly or operate more than one R/C plane or vehicle on the same frequency at a time. Operational interference may occur.

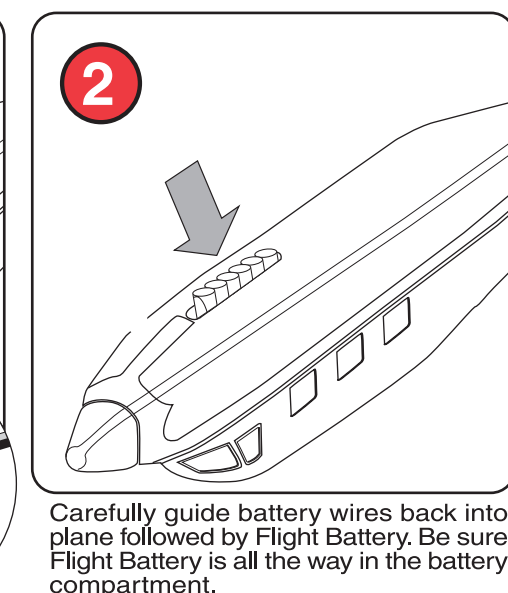
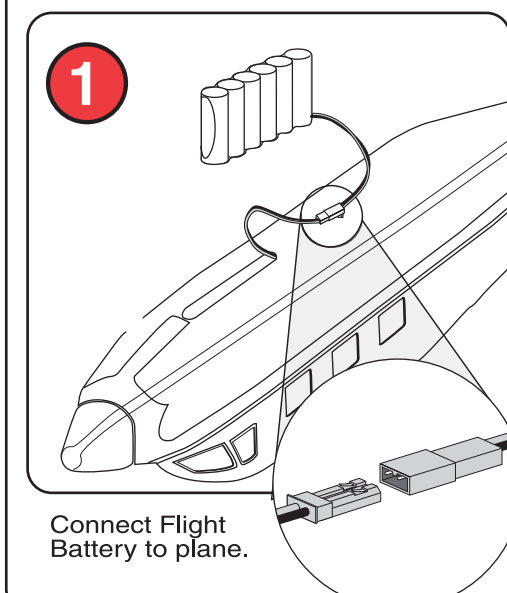
USING THE ESTES PEAK CHARGER



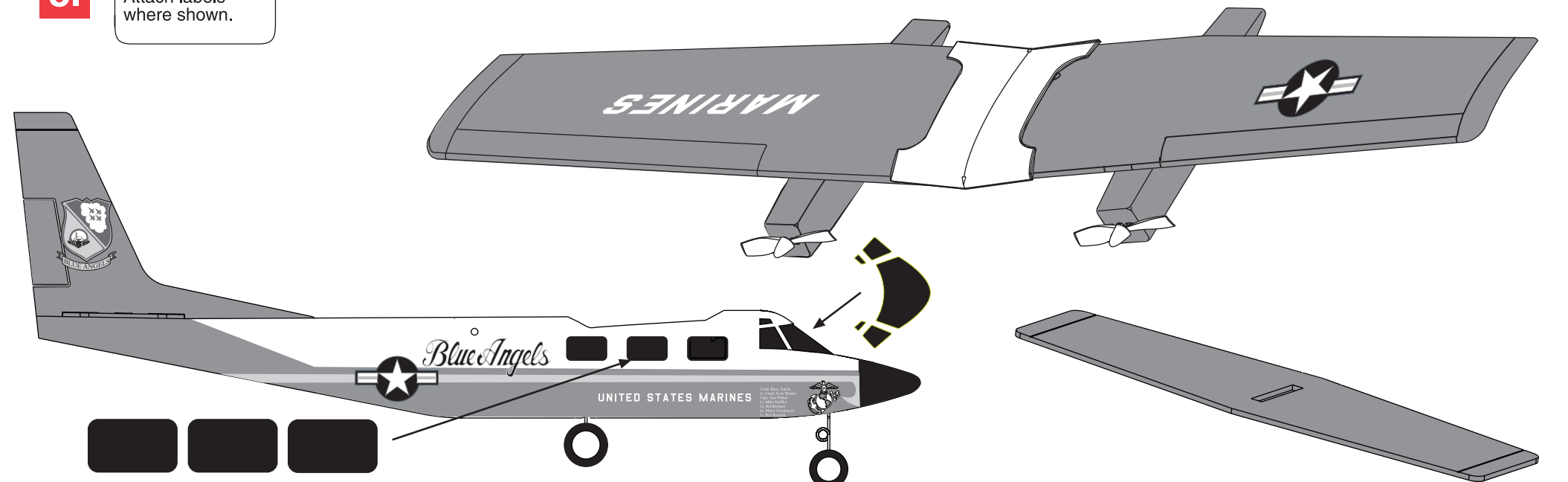
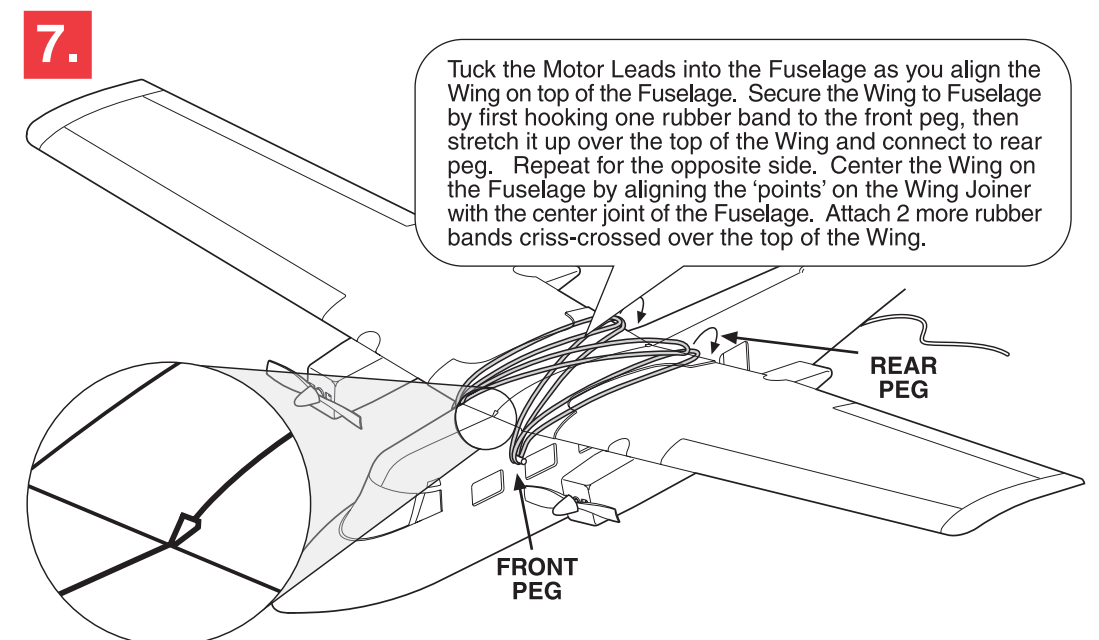
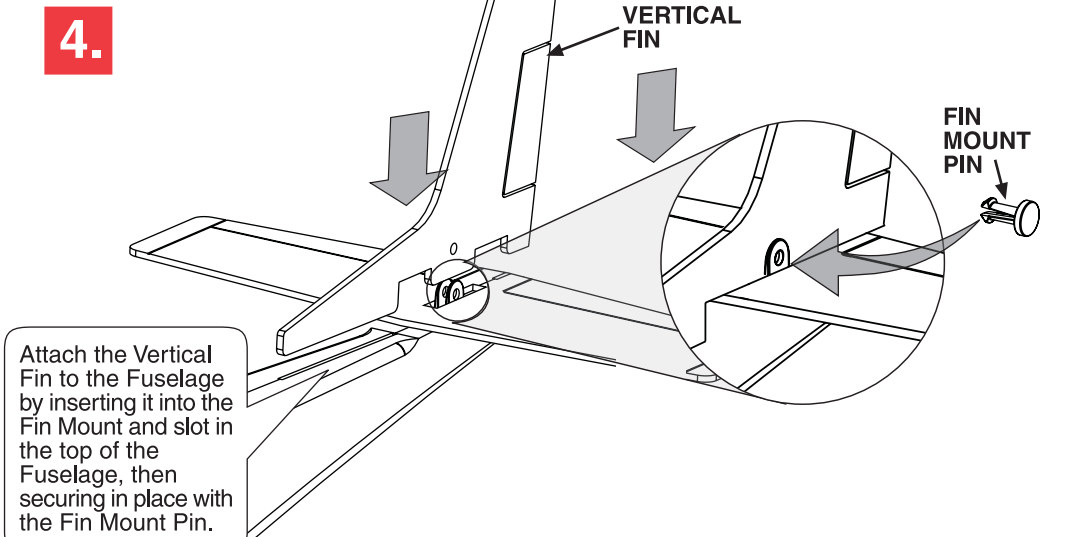
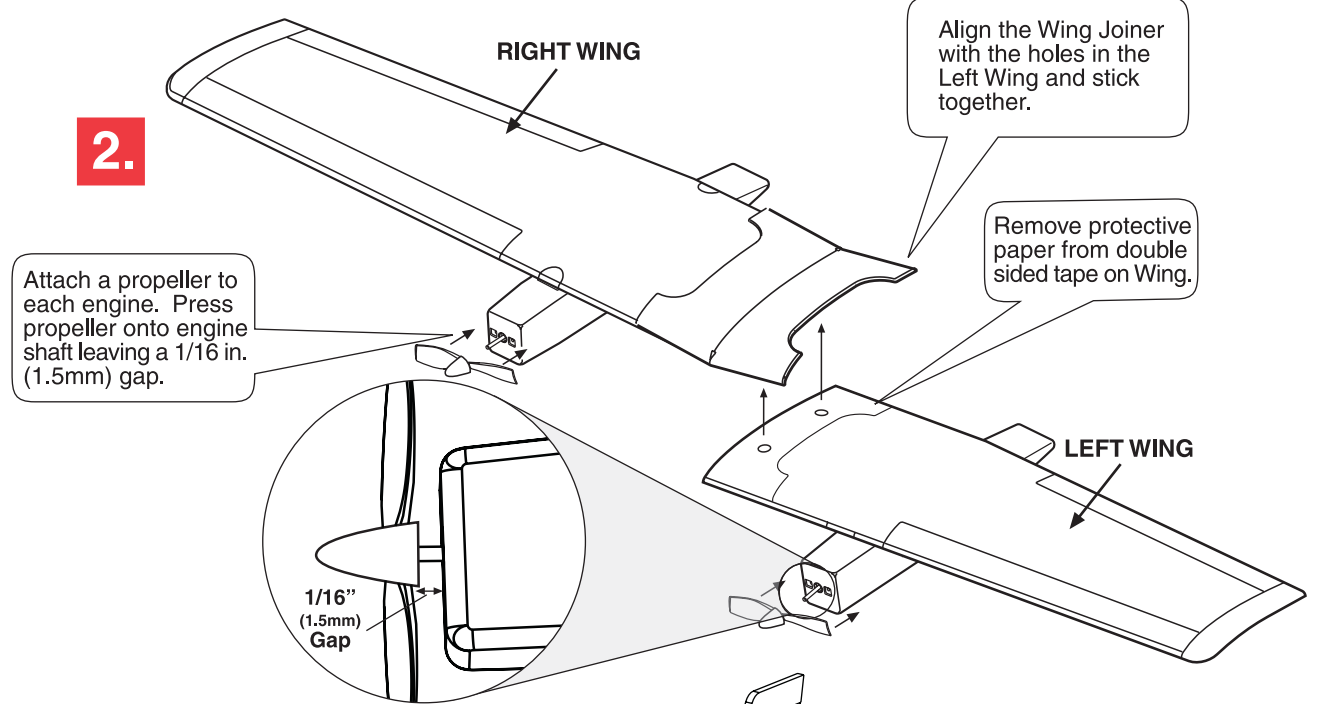
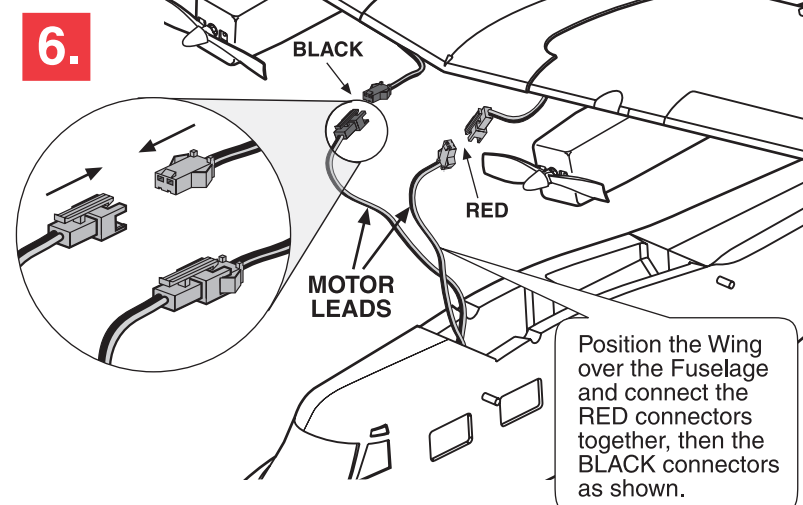
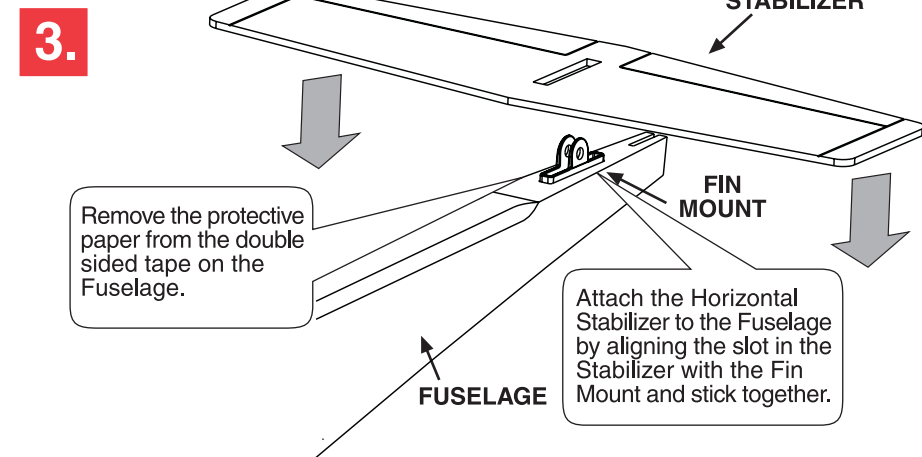
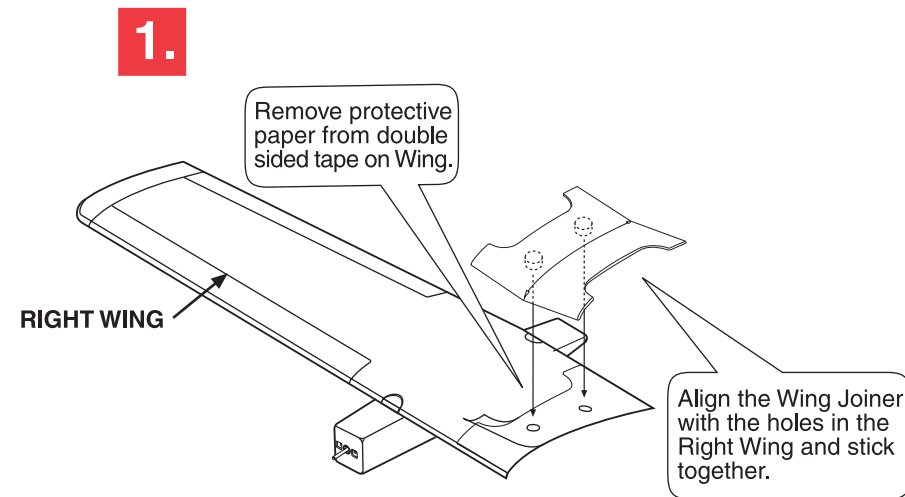
- CHARGING GUIDELINES:**
- Always remove Flight Battery from airplane before charging.
 - If Flight Battery is HOT, allow it to cool before charging or using.
 - Never charge Flight Battery if Charger, DC Adapter or Flight Battery is wet.
 - ALWAYS unplug Charger and Adapter when not in use.
 - Never operate Charger with car engine running.
 - Never leave Flight Battery unattended when charging.
 - DO NOT charge Flight Battery if it shows leakage or corrosion.

NOTE: If the Flight Battery gets "HOT" and/or takes more than 30 minutes to charge, disconnect immediately and call Estes Customer Service at 1-800-525-7561.

INSTALLING THE FLIGHT BATTERY



AIRPLANE ASSEMBLY



TROUBLESHOOTING

ELECTRIC MOTORS DO NOT RUN:

Motors not connected to receiver in plane..... Check motor connections.
 Flight Battery not connected..... Connect Flight Battery.
 Flight Battery not charged..... Charge Flight Battery.
 Transmitter not switched 'ON'..... Switch Transmitter 'ON'.

MOTORS RUN AT SLOW SPEED:

Flight Battery not fully charged..... Recharge Flight Battery.
 Propeller jammed against cowl..... Be sure propeller has 1/16" (1.5mm) clearance from cowl.

SHORT FLIGHT TIMES

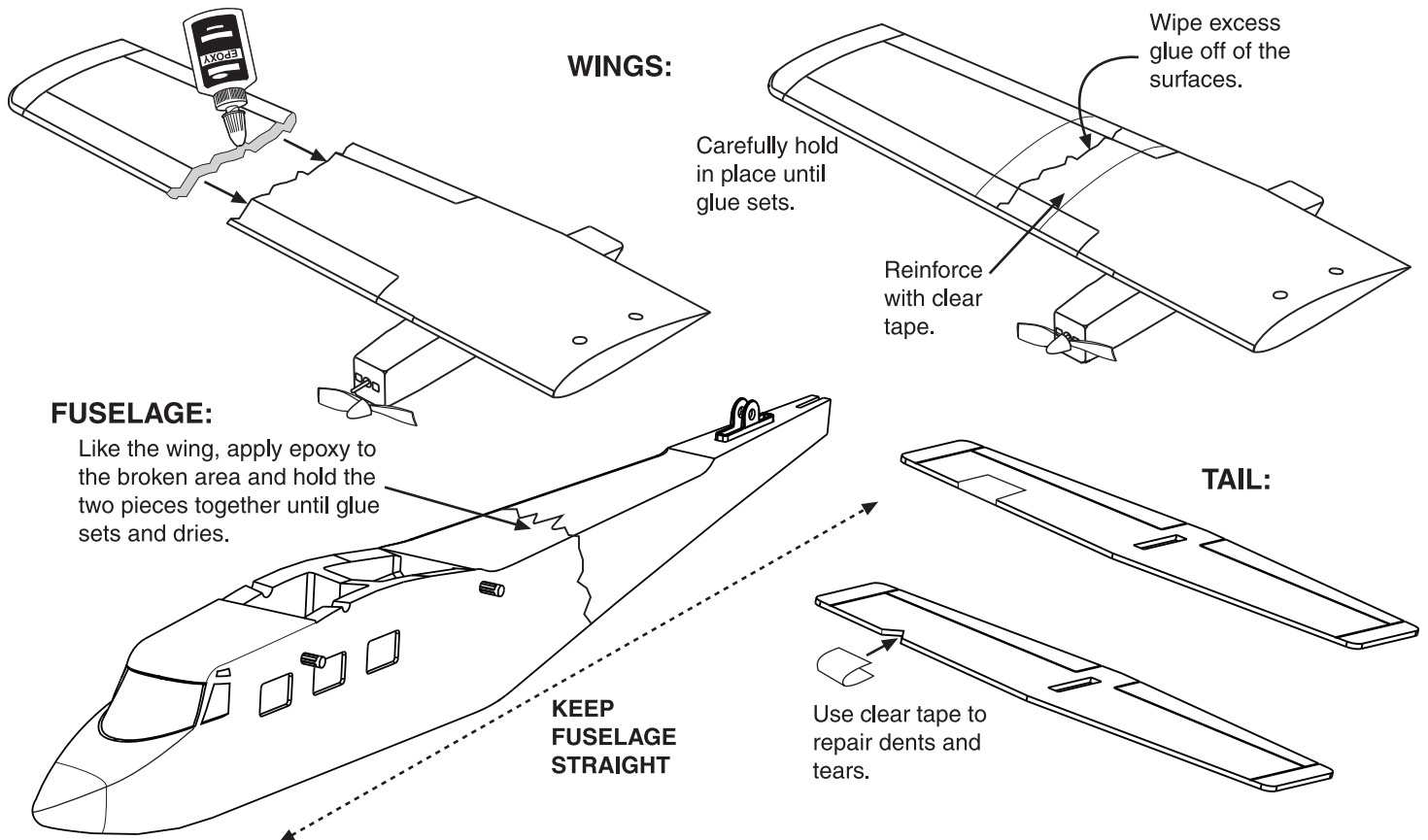
Flight Battery not fully charged..... Recharge Flight Battery.

ERRACTIC, LITTLE OR NO RADIO CONTROL

Other transmitters (CB's, RC Cars or Boats) operating on same frequency near by..... Move to a new location.
 Transmitter batteries low..... Replace Batteries.

REPAIRS YOU CAN DO YOURSELF

Your plane is easy to repair yourself. If damaged, repair any foam part that breaks with 5 - minute Epoxy and/or clear packing tape (sold separately at hardware or hobby stores). NEVER USE INSTANT (SUPER) GLUE...IT WILL DESTROY THE FOAM. Review the illustrations below.



PLEASE DO NOT RETURN YOUR PLANE TO THE STORE - they are not trained to help you like Estes flight techs are! So... before you pack your plane away give us a call at 1-800-525-7561.



www.estesrockets.com

ESTES-COX CORP.
1295 H Street
Penrose, CO 81240
Printed in China

Blue Angels ROG

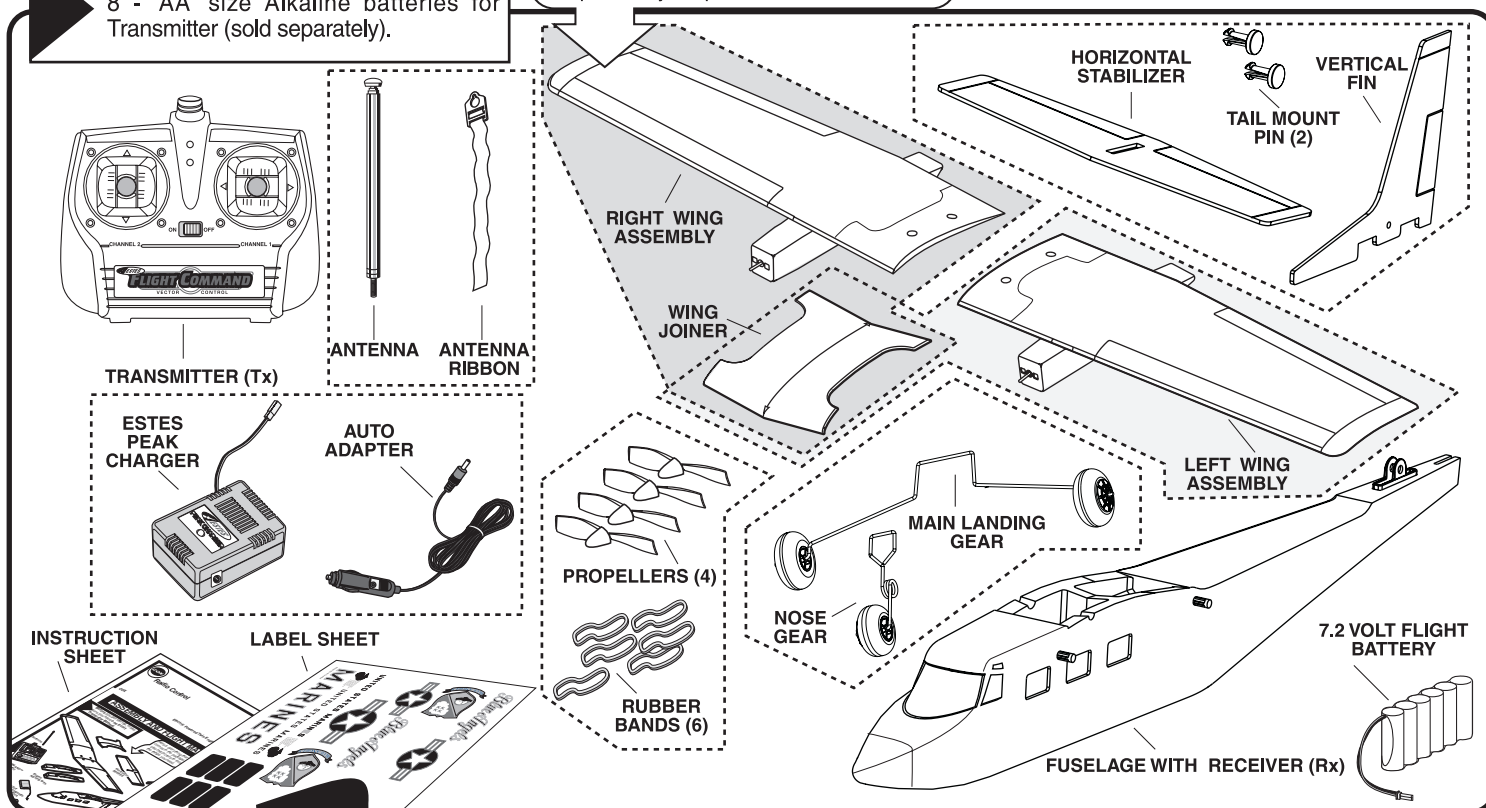
Radio Control Model Airplane – Instruction Supplement – KEEP FOR FUTURE REFERENCE



#4148

Before you get started, be sure you have:
8 - 'AA' size Alkaline batteries for
Transmitter (sold separately).

Here's everything that is included in the
package. Use this picture to help locate
the parts of your plane.



Replacement Parts: Order parts on-line at www.estesrockets.com. Call Estes Customer Service at 1-800-525-7561.

Item #	Description	Item #	Description
060769	Flight Battery	061647	Antenna & Ribbon Spare Part Set
061540	Charger w/ Auto Adapter	061648	Propeller & Rubber Band Spare Part Set
061559	Transmitter	061649	Left Wing Spare Part Set
061600	Fuselage w/ Rx	061650	Right Wing Spare Part Set
061605	Label Sheet	061651	Stabilizer, Fin & Tail Pin Spare Part Set
061646	Main & Nose Gear Spare Part Set		

90 DAY LIMITED WARRANTY

Do not return your plane to the store. Estes will repair or replace factory defects for 90 days from the date of purchase. This warranty specifically does not cover crash damage or abuse.

For fast courteous service, if you find a defect or a part is missing, please contact Estes Customer Service at www.estesrockets.com/customerservice or call 1-800-525-7561.

Obtain a Return Merchandise Authorization (RMA) number from Estes Customer Service before returning a defective part or product. Any part or product returned to Estes without a RMA number clearly marked on the shipping label will not be accepted. Send only the defective part(s). There may be additional charges if you send more than is necessary. **Ship returns to: Estes-Cox Corp., 1295 H St, Penrose, CO 81240.**

This warranty applies only if the product is operated in compliance with instructions and warnings provided with each model. Estes-Cox assumes no liability except for the exclusive remedy of repair or replacement of parts as specified above. Estes shall not be liable for consequential or incidental damages. Some states do not allow the exclusion of incidental or consequential damages so the above exclusion may not apply to you. This warranty gives you specific legal rights and you may also have other rights, which vary from state to state.