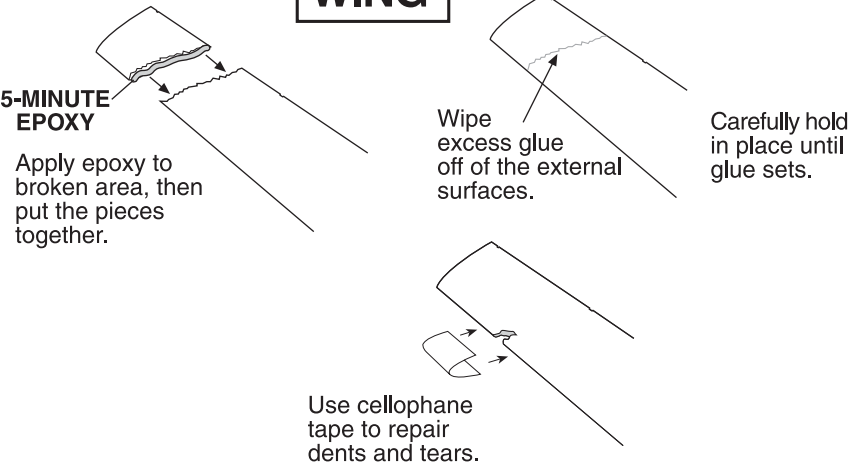


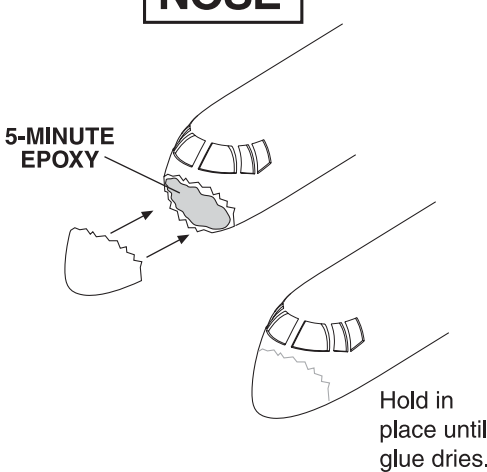
SERVICE YOU CAN DO YOURSELF

The high density EPP foam wings are very durable and can withstand rough landings. If damaged, the foam is easy to repair and you can have your R/C PLANE air worthy again in a short time. To glue foam, 5 Minute Epoxy (sold separately) works best. NEVER USE INSTANT (SUPER) GLUE... IT WILL DESTROY THE FOAM.

WING



NOSE



TROUBLESHOOTING

DUCTED FAN DOES NOT RUN OR LOW POWER.

- Flight Battery not plugged in. → Plug in fully charged Flight Battery.
- Flight Battery not charged. → Completely charge Flight Battery.
- Debris stuck in fan rotor. → Check and clean.
- Ducted fan not connected. → Connect to proper lead.

PLANE DOES NOT FLY

- Flight Battery not charged. → Completely charge Flight Battery.
- Jet not assembled correctly. → Check assembly.
- Turning plane too soon. → Let jet fly by itself after launch for 3-5 seconds.
- Turning plane too sharp. → Do not over control - 'pulse' control stick slower to make wide turns.

ERRATIC, LITTLE OR NO RADIO CONTROL

- Others operating on same frequency nearby. → Move to new location or wait your turn.
- Transmitter battery low. → Replace batteries.

CAMERA NOT OPERATING

- Pictures 'scrambled' or half images → Low Camera Batteries - Replace batteries.
- Software won't load → Using Win98 - install DIRECTX8.1.b as per instruction.
- Camera will not take pictures → Check connection to plane.  
Memory is full - download pictures then turn camera Switch 'OFF' then back 'ON' to clear.  
Batteries low - replace with new batteries.
- No pictures to download → Camera was switched 'OFF' before connected to computer.

FOR MORE HELP!

PLEASE DO NOT RETURN PLANE TO STORE BEFORE CONTACTING US FIRST!

Call Toll-Free 1-800-525-7561 Weekdays except Holidays. 8 a.m. to 4 p.m. Mountain Time.  
or  
Inquire online at [www.estesrockets.com](http://www.estesrockets.com)

If you ever have any questions or problems call **ESTES®** Customer Service. We know all about your airplane and can help you.



[www.estesrockets.com](http://www.estesrockets.com)

ESTES-COX CORP.  
1295 H Street  
Penrose, CO 81240  
Printed in China

**XB-39 EAGLEYE®** Digital Camera Plane

Radio Control Model Airplane  
– Instruction Supplement –  
KEEP FOR FUTURE REFERENCE

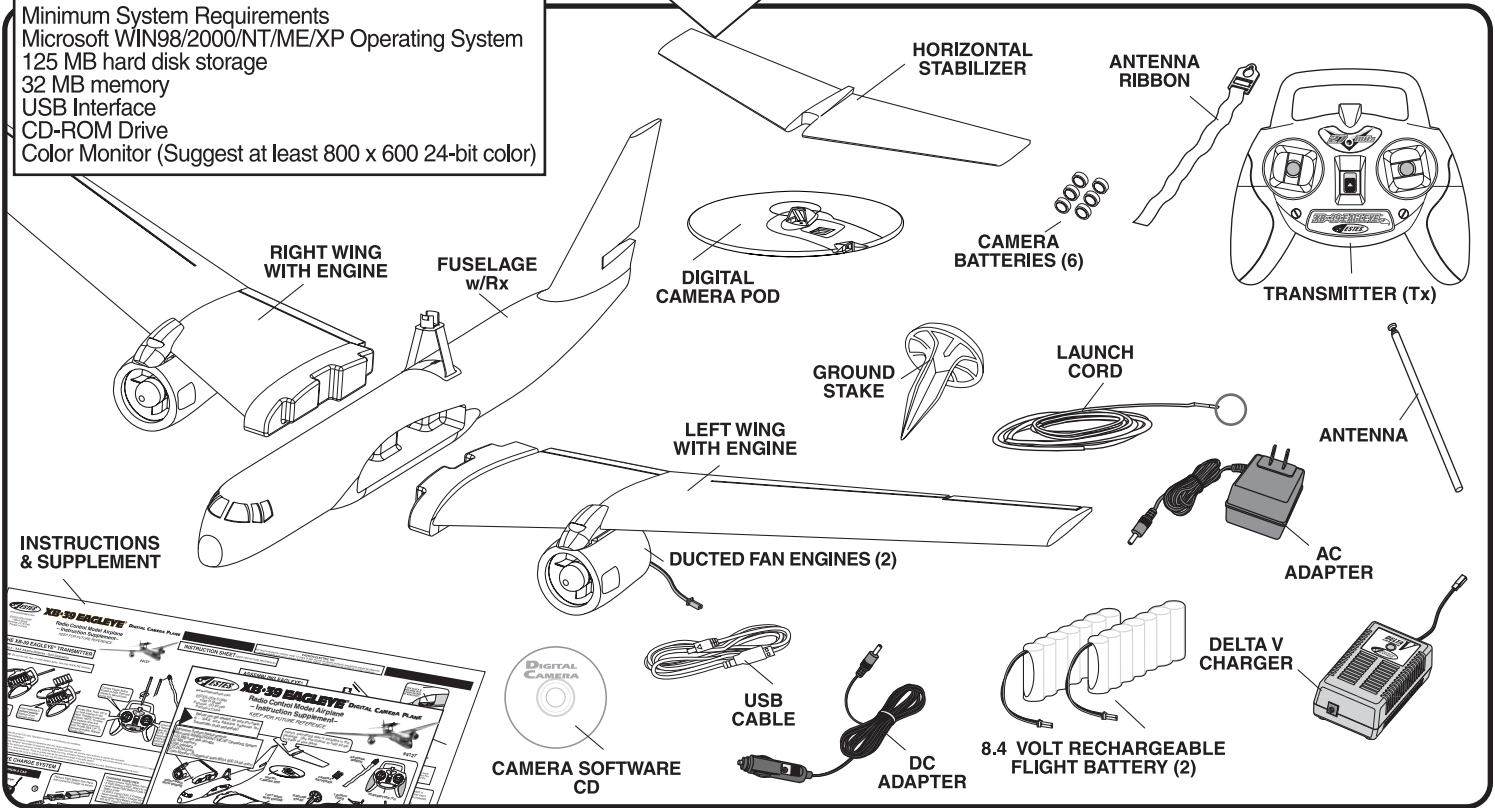


#4127

Before you get started, be sure you have:  
6 - 'AAA' size Alkaline batteries for Transmitter (sold separately)

Here's everything that is included in the package. Use this picture to help locate the parts of your plane.

Minimum System Requirements  
Microsoft WIN98/2000/NT/ME/XP Operating System  
125 MB hard disk storage  
32 MB memory  
USB Interface  
CD-ROM Drive  
Color Monitor (Suggest at least 800 x 600 24-bit color)



Replacement Parts: Call Estes Customer Service at 1-800-525-7561 Monday - Friday, 8:00 am - 4:00 pm Mountain Time. Order parts on-line at [www.estesrockets.com](http://www.estesrockets.com), click on 'Estes Store' then 'R/C Plane Parts'.

Item #	Description	Item #	Description
060455	Camera Battery	061354	Fuselage w/Receiver (Rx)
061080	Launch Cord (Sub C)	061355	Digital Camera Pod
061081	Ground Stake	061365	Left Wing
061116	Transmitter (Tx)	061374	Right Wing
061304	Delta V Charger w/DC Adapter	061358	Ducted Fan Engine
061305	AC Adapter	061359	Camera CD Rom
061312	8.4v Flight Battery	061360	Horizontal Stabilizer
061320	Antenna	061361	Camera USB Cable
061339	Antenna Ribbon		



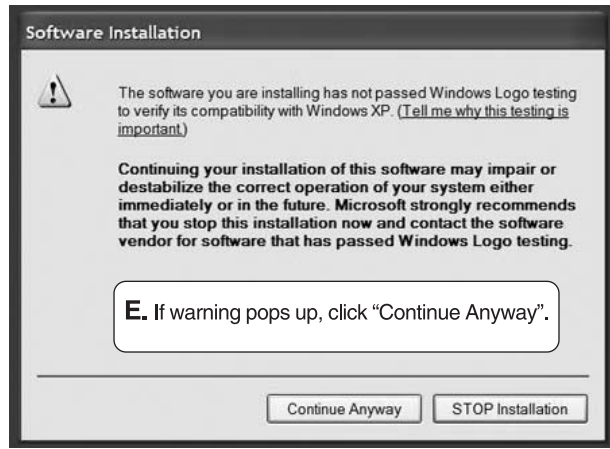
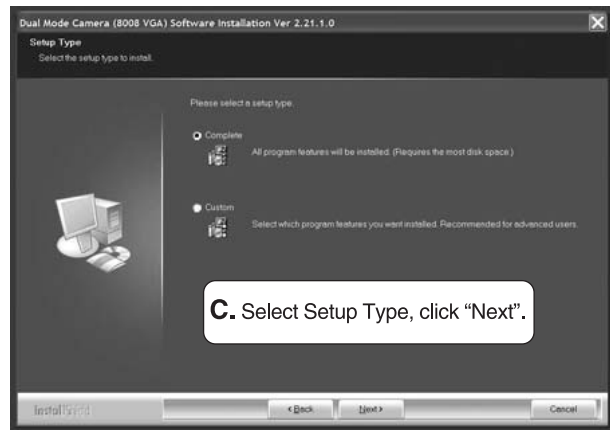
90 DAY LIMITED WARRANTY

Estes will repair or replace factory defects for 90 days from date of purchase. This warranty specifically does not cover crash damage or abuse! If you find a defect, or need replacement parts, please contact Estes Customer Service. Call Monday thru Friday, 8:00 am - 4:00 pm MT. 1-800-525-7561.  
If you wish to return a defective part, send only the part with your purchase receipt, or other adequate proof of purchase to the Estes Customer Service Department, 1295 H Street, Penrose, CO 81240, and Estes will repair or replace it if judged to be factory defective. There will be an additional handling charge if you send the whole model. This warranty applies only if the product is operated in compliance with assembly and operating instructions provided with each model. Estes assumes no liability except for the exclusive remedy of repair or replacement of parts as specified above. Estes shall not be liable for consequential or incidental damages. Some states do not allow the exclusion of incidental or consequential damages so the above limitation may not apply to you. This warranty gives you specific legal rights and you may also have other rights, which vary from state to state.

# INSTALL THE SOFTWARE

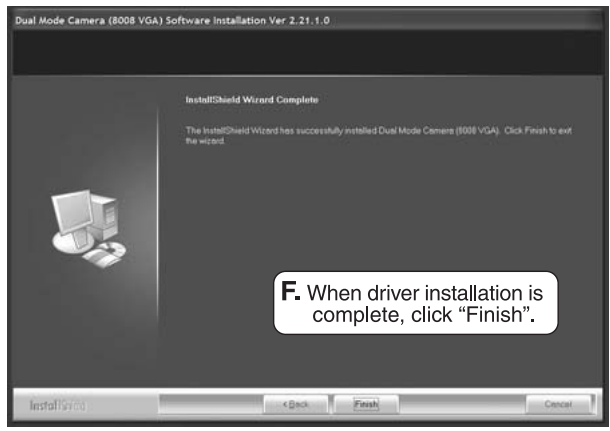
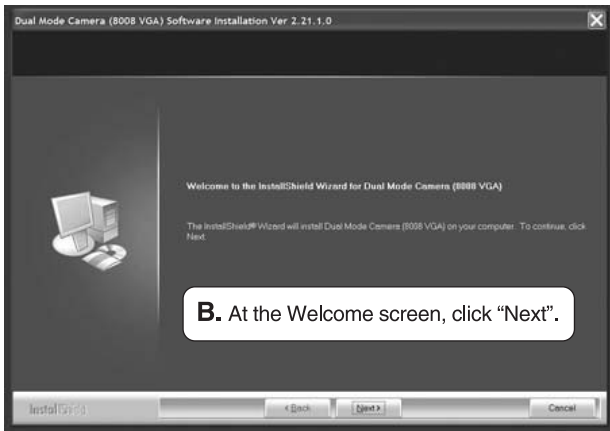
1. Insert CD in CD Drive.

**Important:**  
If your operating system is WIN98, you must first run *DirectX 8.1b Redist Package.EXE* (Where "E" is your CD-ROM Drive) before you set up the driver for the digital camera.



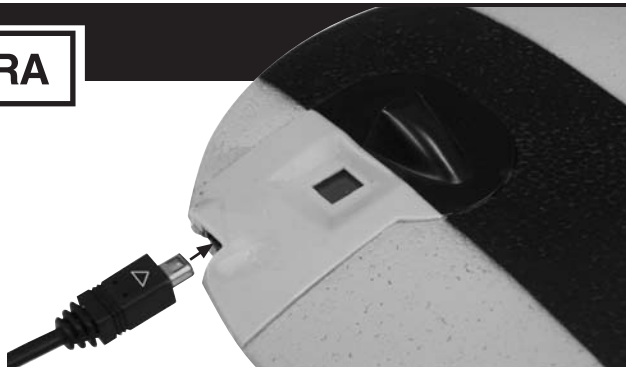
## Minimum System Requirements

- Microsoft WIN98/2000/NT/ME/XP Operating System
- 125 MB hard disk storage
- 32 MB of RAM
- USB Interface
- CD-ROM Drive
- Color Monitor (Suggest at least 800 x 600 24-bit color)
- Image viewer to open .jpg file



# DOWNLOADING PICTURES FROM CAMERA

1. Disconnect and remove camera pod from plane. DO NOT turn camera switch 'OFF' - doing so will erase the pictures stored in the camera.
2. Connect USB cable to the computer, then to the camera pod as shown.



# DOWNLOADING PICTURES FROM CAMERA CONT'D

