

CAIRE®

STROLLER®



PATIENT OPERATING
INSTRUCTIONS

SPRINT™

Stroller/Sprint

Warning Information

Read this page carefully before using your unit.



- The unit contains liquid oxygen which is extremely cold; almost 300 degrees below zero Fahrenheit. Exposure to such a low temperature can cause severe frostbite.



- Liquid and gaseous oxygen, though nonflammable, cause other materials to burn faster than normal. This hazard, along with the low temperature of liquid oxygen, warrants certain safety precautions.

- Do not use or store your unit in an area where combustible materials such as oils, greases, aerosol sprays, lotions or solvents are present.



- **Do not smoke while operating unit.**

- Do not use or store your unit within five feet of electrical appliances, especially stoves, heaters, toasters, and hair dryers.



- Keep your unit in a well-ventilated area.

- In the event of an accidental tip-over, immediately but cautiously return unit into an upright position. **If any liquid oxygen is escaping, leave the area immediately and call your health care provider.**



- **Do not touch the frosted parts of any unit.**

- Do not store or operate the Stroller/Sprint coupled to the stationary unit.

- Applicable EMC information can be found in the Stroller/Sprint Service Manual at www.cairemedical.com.

Explanation of Other Symbols



Name and address of manufacturer



Authorized representative in the European Community



Caution, consult accompanying documents



Non-flammable gas



Oxidizing substances



Type B Applied Part (degree of protection against electric shock)

Patient's Records

Patient's Name

Prescribed Oxygen Flow Setting

Doctor's Telephone Number

Distributor's Name

Person to Contact

Distributor's Emergency Telephone Number

Special Instructions

Stroller/Sprint

Table Of Contents

Introduction	4
Controls	5-6
Filling Instructions	7-10
Operating Instructions	11-15
Additional Information	16

Specifications:

- Mode of Operation: Continuous
- Type of Protection Against Electric Shock: Internally Powered Equipment
- Degree of Protection Against Electric Shock: Type B Applied Part
- Classification according to the degree of protection against ingress of water: IPX0 - Ordinary Equipment
- Equipment is not suitable for use in the presence of flammable mixtures

■ Important: *Read this manual thoroughly before operating the Stroller/Sprint.*

■ *Rx only.*

■ Warning: *This device is not intended for life sustaining use.*

■ Caution: *Use the Stroller/Sprint only as directed by your doctor.*

■ Warning: *If you feel the equipment is not working properly, call your health care provider. Do not attempt to repair or adjust the units yourself.*

Stroller/Sprint

Introduction

The liquid oxygen system includes a stationary unit and the Stroller/Sprint, which provides supplementary oxygen as prescribed by your physician. This POI contains the instructions for using the Stroller/Sprint. Refer to the POI supplied with the stationary unit for its operation.

The Liberator is the larger container and is intended for stationary use. You may take oxygen directly from the Liberator. The unit is filled by your health care provider.

The Stroller/Sprint provides an ambulatory source of oxygen for an extended period of time. They are filled from the Liberator.

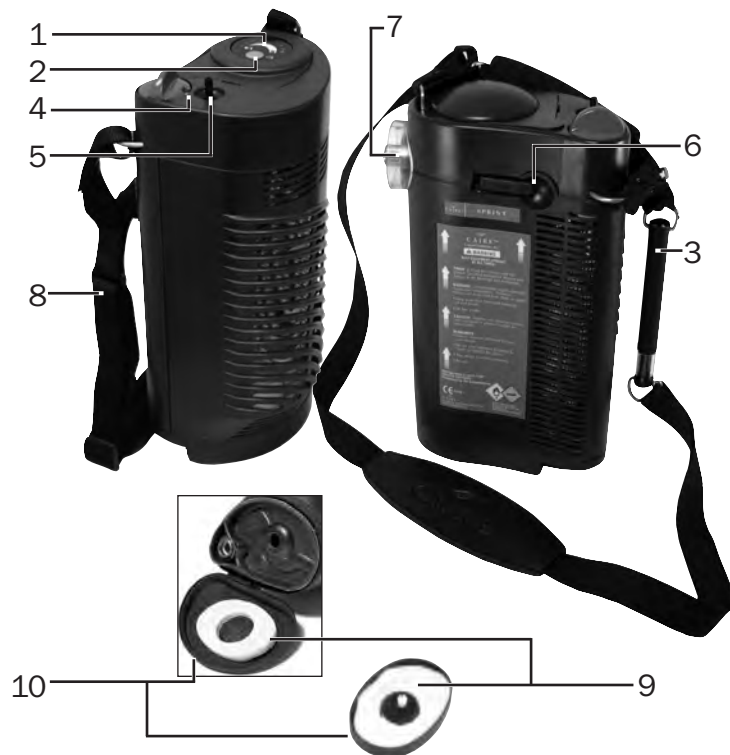


Side fill Stroller and Sprint shown.

Stroller/Sprint

Controls

1. Electronic Liquid Level Gauge
2. Electronic Liquid Level Switch
3. Mechanical Liquid Level Gauge
4. Flow Control Knob
5. Oxygen Tube Connector
6. Vent Valve
7. Fill Connections (see next page for QDV Identification)
8. Carrying Strap with Shoulder Pad
9. Condensation Pad
10. Condensation Cup



Quick Disconnect Valve (QDV) Identification

Portable
Connector:



Stationary
Connector:



QDV Style:

CAIRE
Side Fill

LINCARE
(UC)

CRYO2

LIFE-OX

PENOX

TAEMA

PB

SF Locking

TF Locking

TF Push-on

Stroller/Sprint

To Fill the Top Fill Stroller/Sprint

1. Clean the fill connectors on both the stationary and the Stroller/Sprint with a clean, dry, lint-free cloth.

Caution: *The fill connectors must be dry, because moisture can cause your Stroller/Sprint and stationary unit to freeze together.*

2. Make sure the flow control knobs on both the Stroller/Sprint and reservoir are in the off (0) position.
3. Position the fill connector in the upright position over the stationary unit's connector.



Step 3

4. a. If your connector is a push-on:
Lower the Stroller/Sprint unit on to the stationary unit until you feel the connector engage.

- b. If your connector is Cryo2:

Rotate Stroller/Sprint until you feel the connectors engage. Then, carefully and firmly, rotate the Stroller/Sprint counterclockwise (↺) while pressing downward.

- c. If the connector is a Penox, Life-Ox, or Lincare:

Rotate Stroller/Sprint until you feel the connector engage. Then, carefully and firmly, rotate the Stroller/Sprint clockwise (↻) while pressing downward.

Note: *Continued on step 6 (page 9).*



Step 4a



Step 4b



Step 4c

To Fill the Side Fill Stroller/Sprint

1. Clean the fill connectors on both the stationary and the Stroller/Sprint with a clean, dry, lint-free cloth.

Caution: *The fill connectors must be dry, because moisture can cause your Stroller/Sprint and stationary unit to freeze together.*

2. Make sure the flow control knobs on both the Stroller/Sprint and reservoir are in the off (0) position
3. Make the Stroller/Sprint fill connector is in the upright position to the stationary connector.
4. Rotate the Stroller/Sprint counterclockwise (↺) until you feel the pin and slot engage.
5. Carefully and firmly rotate the Stroller/Sprint back to the upright position. Now the units are locked together.

Note: *Continued on step 6.*



Step 3



Step 4



Step 5

Stroller/Sprint

Note: For push-on style connector, hold the unit in place throughout the fill.

6. Open the vent valve to begin filling your Stroller/Sprint. You should hear some oxygen escaping; do not worry. The hissing sound you hear is perfectly normal.

Note: Liquid level gauge readings are most accurate 30 seconds or more after the Stroller/Sprint is filled.

7. You may also see vapor around the connection. This is normal and is due to the great difference in temperature between the liquid oxygen and the warm air surrounding the units.
8. When the unit is full, close the vent valve. You can tell that the unit is full when the hissing sound changes in tone, and some liquid comes out of the vent line.

Note: Closing the valve after a nearly continuous stream of liquid oxygen is discharging fills the Stroller/Sprint most completely, but wastes some liquid oxygen.



Step 6

Stroller/Sprint

Closing the valve at the first sign of liquid discharge does not fill the Stroller/Sprint as completely, but saves liquid oxygen.

9. For the push-on style connectors, push the release button down until the units separate. For all other connectors rotate the unit until it separates from the stationary unit.

Caution: Check liquid level gauge only after the vent valve is closed.

Caution: If the Stroller/Sprint does not separate easily, do not use force. The units may be frozen together. Wait until the units warm up — then they'll separate easily. Do not touch any frosted parts. Should there be any liquid leakage from the stationary unit or Stroller/Sprint after separation, reattach the Stroller/Sprint immediately. Again separate the units. If the problem persists, leave units coupled and call your health care provider.

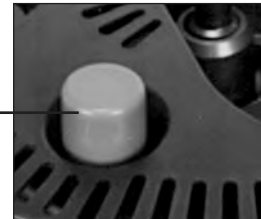
Warning: Do not operate Stroller/Sprint while attached to the stationary unit.

Warning: Should the leakage be excessive to the point that a stream of liquid is present, leave the area and call your health care provider immediately.

Caution: If the Stroller/Sprint is being refilled immediately after a period of use, fill it, and then wait 10 minutes after filling with the FCV set at zero for the pressure to stabilize. Then operate as normal.

Warning: Liquid or cold gaseous oxygen can frostbite the skin. Oxygen will result in increased fire hazard.

Portable
Release
Button
(push-on
style only)



Stroller/Sprint

Operating Instructions

1. Push the cannula breathing tube firmly on to the oxygen tube connector.
2. Adjust your cannula breathing tube to the proper position so that you will be able to breathe the oxygen comfortably.
3. Turn the flow control knob on top of the Stroller/Sprint clockwise until the prescribed flow rate (numeral) is visible in the knob “window” and a positive detent is felt.

Warning: *Out-of-specification oxygen flow will result if the flow control knob is set between flow rates.*

4. You should be receiving oxygen now. To stop flow of oxygen, turn the flow control knob counterclockwise to the off (0) position.

Caution: *Always turn the flow control knob off (0) when not in use.*



*Cannula is not included

Stroller/Sprint

5. Use the following chart as a guideline to determine the length of time the Stroller/Sprint will operate:

FCV Setting													
Model		Off	.25	.5	.75	1.0	1.5	2.0	2.5	3.0	4.0	5.0	6.0
Sprint	Nominal	30:00	20:50	12:55	9:25	7:20	5:10	4:00	3:10	2:40	2:05	1:40	1:25
Stroller	Nominal	60:00	41:40	25:55	18:45	14:45	10:20	8:00	6:25	5:25	4:05	3:20	2:45

Note: Times are in hours and minutes (format 00:00).

Note: The “Nominal” times are for ideal conditions, i.e. maximum fill, exact flow rates, good loss rate, unit not being moved, etc. These times are the maximum expected.

Note: Your individual results will vary.

Stroller/Sprint

6a. To verify the level of liquid oxygen in the unit with the electronic liquid level gauge:

- **Gen 3 Gauge:** Depress the push button (liquid level switch) on top of the unit for two seconds minimum. Read across the top of the light bar to indicate contents level.
- **Gen 4 Gauge:** Press the green operate button on the face of the gauge. Read the arc of LEDs, which indicates content level.

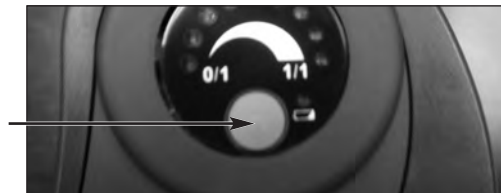
Caution: The Stroller/Sprint is empty if only the last segment of the light bar is lit.

If the Low Battery indicator lights up when the button is depressed, notify your health care provider.

Note: The Stroller/Sprint will continue to supply oxygen even if the Low Battery Indicator lights up, as long as there is liquid oxygen in the unit.



GEN 3 Gauge



GEN 4 Gauge

Stroller/Sprint

6b. To verify the level of liquid oxygen in unit with the mechanical liquid level gauge:

- Support the unit, by the fabric strap, directly above the black contents indicator spring scale chamber.
- Allow the unit to stabilize (i.e. not bounce up and down), then read the exposed colored scale for approximate liquid oxygen contents.

Note: If the unit is empty, only the red colored band of the scale will be exposed. If this is the case, the unit must be filled prior to use.

7. Under certain environmental conditions, with continuous use, and especially with the portable not being moved, it may develop excessive frost around the vaporizer coil and on the case. You may reduce this frost by tapping the unit and/or wiping any accumulated frost off the case.



Stroller/Sprint

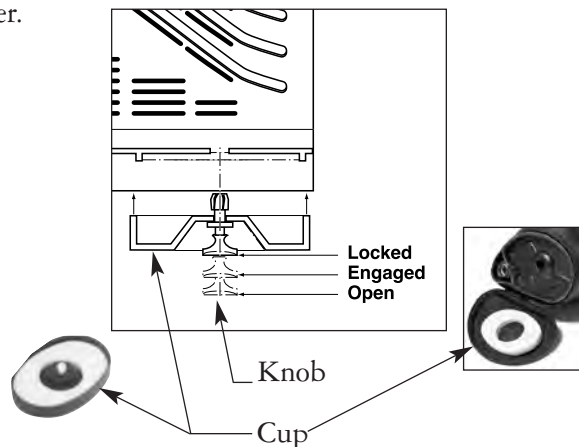
8. After the unit is empty and has warmed up to room temperature, remove any moisture from the condensation cup:

- **For hard case**

Tilt the unit to one side. Grasp the knob at the center of the condensation cup (at the bottom of the unit) and pull straight out. This will release the cup.

- **For soft case**

Unzip the bottom zipper and pull back the bottom cover.



- Remove the pad from the cup and wring out any absorbed moisture. Allow the pad to dry completely before replacing it in the cup.

Note: If heavily soiled, the pad can be machine washed (with bleach to disinfect).

- **For hard case**

To replace the cup, center it over the round opening at the bottom of the unit and press the knob in one click to engage the cup and then a second click to lock the cup in place.

- **For soft case**

To replace, simply insert pad into bottom cover and rezip the bottom zipper.

Note: If the knob will not push in and engage the cup, hold the cup and pull the knob out until it clicks into the open position. Now replace the cup as previously described.

Cleaning Standard

■ *Warning: Clean only after unit is empty and vented.*

- Clean by applying household glass cleaner to a lint-free cloth and wipe external surfaces – do not get glass cleaner on any internal components or valves.
- Allow unit to dry thoroughly before using.

■ *Note: Note to health care provider – for reprocessing procedure, see applicable service manual.*

WEEE and RoHS



This symbol is to remind the equipment owners to return it to a recycling facility at the end of its life, per Waste Electrical and Electronic Equipment (WEEE) Directive.

Our products will comply with the Restriction of Hazardous Substances (RoHS) directive. They will not contain more than trace amounts of lead or other hazardous material content.

Accessories

The lightweight Stroller carrying cart weighs only 3-1/4 lbs. The cart accommodates both the Stroller or the Sprint.





2200 Airport Industrial Drive
Ste 500

Ball Ground, GA 30107

U.S.A.

www.cairemedical.com

M. D. D. Representative:

Medical Product Services

Borngasse 20

35619 Braunfels, Germany

Ref 13138009 Rev F

