



SUPER TORQUE DIGITAL SERVO **INSTRUCTION MANUAL**

Product no. #8127/DS1015
#8128/DS1313



Introduction

Congratulations on your purchase of the ACE R/C Super Torque Digital Servo. This digital servo is a race-proven product which features numerous enhancements that will take your R/C vehicle to the next level. Equipped with an all-new ultra precise metal gear and an advanced microprocessor, this servo will provide precise outputs and ultra fast signal pulse processing. Its state-of-the-art aluminum heat sink mid case prevents any fading of performance due to heat build-up. THOROUGHLY READING THE USER'S MANUAL PRIOR TO INSTALLATION IS STRONGLY RECOMMENDED.

Features

- Equipped with ultra precise metal gears.
- Advanced microprocessor that can process signals faster and with more precision.
- Aluminum heat sink mid case dissipates heat build-up for fade-free performance.
- Advanced case design enhances structural integrity to deliver dependable power and accuracy.
- Higher holding power with less angular errors compared to other leading brands.
- Superior torque output with low current consumption.
- Water and dust resistant.

Contents

Product name	DS1015	DS1313
Servo	#8127	#8128
Servo Connector	JR Type	JR Type
Servo Horn	Super Rigid	Super Rigid
Servo Hardware	Horn Screw x 1	Horn Screw x 1
	Mounting Screws x 4	Mounting Screws x 4
	Eyelet-Brass x 4	Eyelet-Brass x 4
	Rubber Grommet (Damper) x 4	Rubber Grommet (Damper) x 4
	Flanged Nut x 4	Flanged Nut x 4

Specifications

Product name	DS1015	DS1313
Product No.	#8127	#8128
Motor	Coreless	Coreless
Gear	Metal	Metal
Case	Heat Sink	Heat Sink
Dim. (LxWxH)mm	41.8 x 20.6 x 39.6	41.8 x 20.6 x 39.6
Weight (g/oz)	66 / 2.328	66 / 2.328
Torque (Kg-cm/oz-in)@ 6V	14.5 / 201.4	12.5 / 173.6
Transit Time (sec/ 60°)@ 6V	0.108	0.13
Voltage Range	4.8V ~ 6V	4.8V ~ 6V

Precaution

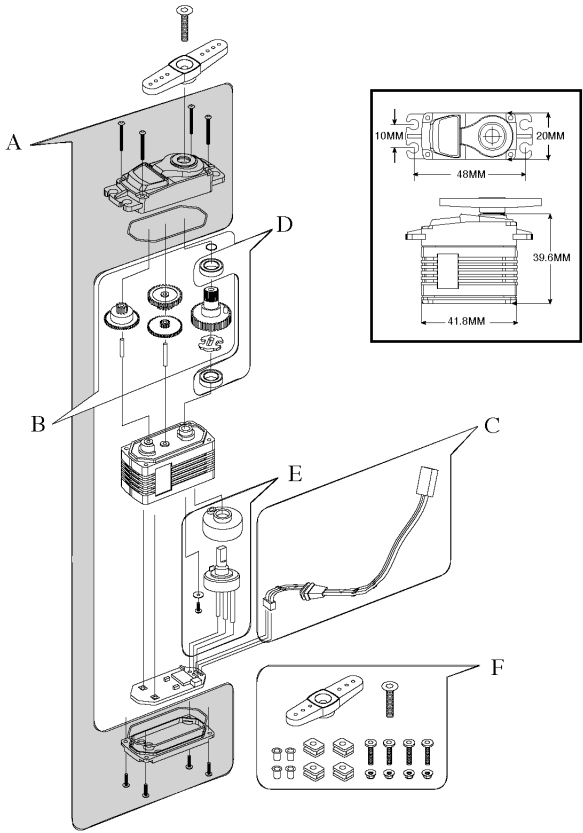
- Use high capacity NiCD or NiMH batteries instead of dry cells. A typical characteristic of all digital servos is its relatively higher current consumption compared to non-digital servos. It is for this reason that using dry cells is not recommended.
- To achieve the best performance, an FM radio control system is recommended for its more precise pulse signal processing.
- If you use an AM radio system, the Battery Eliminator Circuit (BEC) of most AM receivers will limit the current supplied to the servo. By-passing the BEC with a "Y" harness is recommended when using an AM receiver.
- Using radio systems with a "fail safe" function will result in shorter operating time due to the fail safe system's higher voltage cut-off setting.

Service

Thunder Tiger strives to bring you the highest level of quality and service. To get the most up-to-date product information and technical support, please feel free to contact your local dealer or Thunder Tiger authorized distributor. Or visit our website: www.thundertiger.com

Parts List

Item	8127	8128
Name	DS1015	DS1313
A UP / LOW CASE SET	AQ1434	AQ1434
B GEAR SET	AQ1433	AQ1433
C CONNECTOR	AQ1418	AQ1418
D BEARINGS	AQ1497	AQ1497
E VARIABLE RESISTOR	AQ1421	AQ1421
F ACCESSORY PACKAGE	AQ1420	AQ1420
MISCELLANEOUS		
12 DAMPERS (SQUARE)	AQ1422	AQ1422
12 EYELETS (Ø3)	AQ1494	AQ1494



Manufactured by
THUNDER TIGER CORP.
<http://www.thundertiger.com>

JC0618