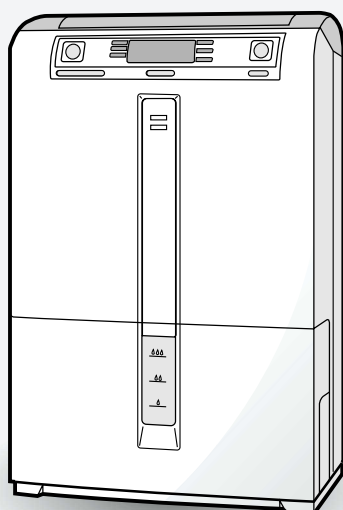


## MODEL DW-208EX DEHUMIDIFIER OPERATION MANUAL



### Features

- **Rapid DRY CLOTHES function:** Inverter capable of blowing a great volume of airflow
- **Choosing airflow direction freely:** By a multi-flowing louver
- **Sufficient capacity (20L /day) :** By high-power dehumidifier
- **Separating operation based on purpose for use:** By a right-left-detached control panel
- **Large crystal monitor** allows you to check for temperature, humidity and level of room comfort
- **Easily know conditions** through a mold warning indicator
- **A large tank capacity (about 6.4L)**
- **Pre-installed CLEAN AIR function**
- **Casters** allow carrying convenience of your unit

This product is for household use only.

### CONTENTS

	Page
<b>Preface</b>	
● Precautions .....	2
● Proper Uses .....	6
● Preparations Before Using .....	7
● Part Names and Functions .....	8
<b>Operation</b>	
● Operation Procedure .....	10
● Dry clothes operation	
● Dehumidifying operation	
● Changing the Operation Mode .....	12
● Dry clothes operation	
● Dehumid settings operation	
● How to see indication	
● Airflow direction is switched	
● How to Operate the Timer .....	14
● Defrosting .....	15
● Emptying the Water Tank .....	16
● Continuous Drainage .....	17
● Move (by using caster) .....	17
<b>Others</b>	
● Maintenance .....	18
● General Reference .....	20
● Specifications .....	21
● Supplied Accessories	
● Optional Accessories .....	21
● Before Calling for Service .....	24

Thank you very much for purchasing this SHARP dehumidifier.

Please read this manual carefully to ensure safe, effective use of your dehumidifier.

Please read carefully through "Precautions" before commencing to use this product.

Please keep this manual within easy reach so that you can refer to it at any time you need.

★ This dehumidifier complies with the '96 Chlorofluorocarbons Control Act, using the chlorofluorocarbon HFC-134a which has an ozone-depletion factor of zero.

# Precautions

## Caution symbols

Certain symbols are used throughout this manual and on the product to alert you for important points relating to safe and effective use of this product. These symbols, which are classified according to the seriousness of the risk involved, are explained below. Please read this section carefully.



### Warning

Failure to follow this instruction may result in death or serious injury.



### Cautions

Failure to follow this instruction may result in injury or damage to property.

## During operation

### Warning



**Should the supply cord be damaged, it must be replaced by a service center approved by Sharp as special tools are required.**



**Do not stick your fingers or any foreign objects into the air outlet or intake.**

Otherwise the rotating internal fan may be damaged or cause injury to your fingers.



**Do not operate the unit at voltages other than the rated voltage of 220V.**

Using this product at any other voltage may result in electric shock or fire.



**Do not connect this product using joined electric cords or extension cords, or sharing a power socket with other electrical appliances.**

Otherwise there is a risk of electric shock, heat or fire.



**Do not modify or cause damage to the power cord in any way.**

Otherwise electric shock or fire may result. Note that heat, nipping, pulling or placing heavy objects on it may damage the cord.



**Do not try to take out the plug by pulling the power cord in order to stop operation.**

Otherwise electric shock or fire may result.



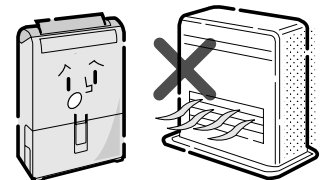
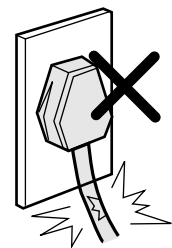
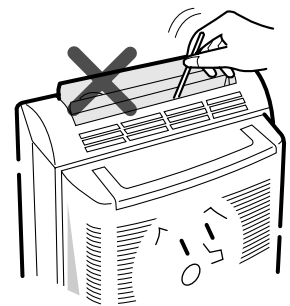
**Do not place the unit near any heat sources.**

Otherwise resin material in the product may melt and catch fire.



**Make sure that the power plug is not covered with dust before inserting the plug into the power socket.**

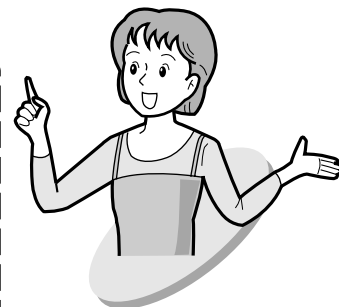
If there is any dust or the connection is not secure, electric shock or fire may result.



## Meaning of the symbols

- ⚠ EXTRA CAUTION needed.
- ⊘ Actions that should be strictly avoided.
- ❗ Actions that must be taken.

- Take care to read through the precautions before commencing to use this product. Keep this manual within easy reach so that you can refer to it at any time.



## ⚠ Cautions

- ⊘ **Do not operate the unit in a closet or in a narrow, confined space between furniture.**

Insufficient ventilation can result in overheating or combustion.

- ⊘ **Do not install the unit in locations exposed to splashing water.**

Otherwise electric shock, short circuits or fire may result.

- ⊘ **Do not install this unit in locations where there is any risk of exposure to leaking oil or combustible gas.**

Leaking oil or gas near the unit may cause fire.

- ⊘ **Do not place any vessels containing water, e.g. a vase, on the unit.**

Water spilled on the unit may impair electrical insulation, resulting in electric shock, short circuits or fire.

- ⊘ **This product is for indoor use only. Do not install in locations exposed to direct sunlight or without shelter.**

Otherwise this may lead to overheating, electric shock, short circuits or fire.

- ⊘ **Do not use this unit for storage of any items that require strict temperature control, such as art works or academic materials.**

Otherwise the quality of these items may actually deteriorate.

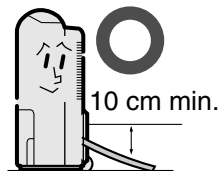
- ❗ **Make sure to operate this product only on level, stable surfaces.**

An uneven surface may cause stored water to spill and to make household furniture or appliances wet, or to cause electric shock, short circuits or fire.

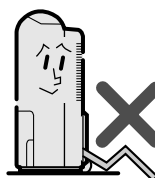
- ❗ **When water is to be drained continuously, take care that the hose is not bent and that the hose outlet is positioned below the unit.**

Otherwise drained water may spill and make household appliances or furniture wet.

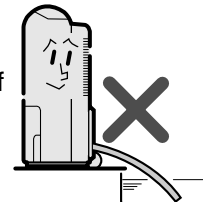
Lay the hose with a downward slope.



Do not bend the drain hose.



Do not place the open end of the drain hose in water.



- ⚠ **If a drain hose is used, take care that the temperature around the hose does not fall below 0°C.**

Otherwise, water in the hose may freeze causing undrained water to leak from the unit and make household furniture or appliances wet.

# Precautions

## ⚠ Cautions



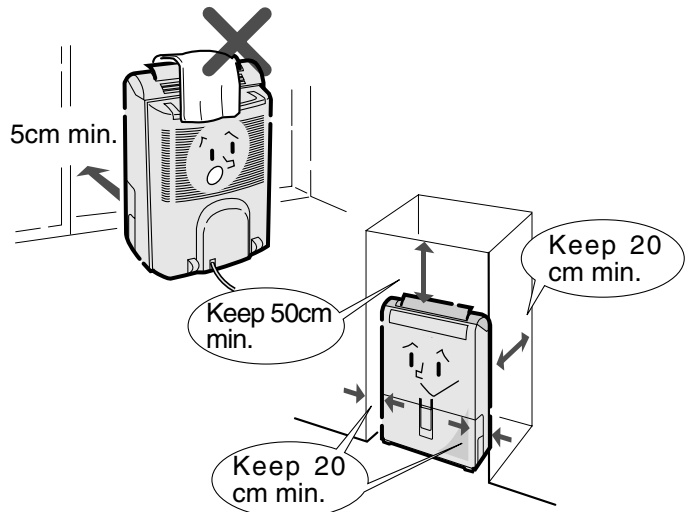
**Do not obstruct the air outlet or air intake with clothing or any other materials.**

Otherwise, air flow will be obstructed, resulting in overheating or fire.

**Make sure that the airflow louver lever is opened whenever the unit is operating.**

The airflow louver lever can also be used as cover to protect the unit from dirt and dust when not being used.

When the unit is in operation, the louver can change airflow from diagonally-front, upward, diagonally-backward and backward directions.



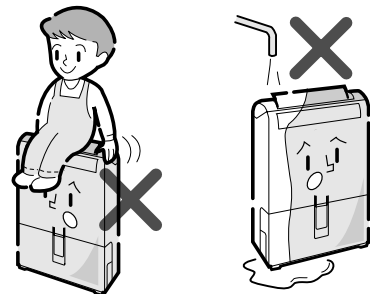
**Do not stand or sit on the unit.**

Otherwise personal injury or damage to the unit may result if you fall down or if the unit falls down.



**Do not wash the unit directly with water.**

Otherwise electric shock may result.



**Do not place a combustion device (e.g. stove) near the air outlet of the dehumidifier.**

Otherwise incomplete combustion may result.



**Take care to hold the plug firmly when unplugging the unit.**

Pulling the cord may cause the wire inside to break, resulting in overheating.



**Before cleaning the unit, first turn it off using the operation key and unplug the power cord.**

Otherwise the internal fan that operates when the unit is on may cause injury.



**Before moving the unit make sure that the power is turned off and that the tank is emptied.**

Otherwise spilled water may wet household appliances resulting in electric shock, short circuits or fire.



**When moving the unit, drain water first from the tank. Move its caster by grasping the carrying handle firmly so that the dehumidifier may not be inclined.**

Otherwise this can cause injuries or damage to the floor.



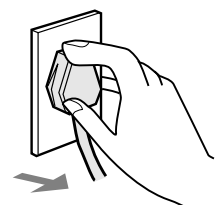
**If the unit is continuously being used for a long period of time, make sure to inspect it regularly.**

Otherwise overheating or electrical short circuits may result.



**Whenever the unit is to be left unused for a long period, make sure to unplug the unit for safety.**

Otherwise, electric shock or fire may result.



## ⚠ Warning



**Do not modify the unit. This unit should not be disassembled or repaired by persons other than a qualified technician.**

Otherwise fire, electric shock or injury may result.



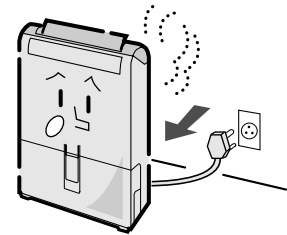
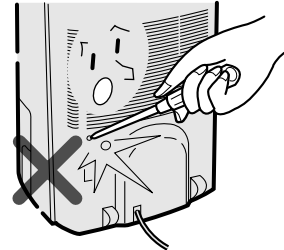
**If repair is required, please consult the SHARP Service Center.**

Otherwise fire, electric shock or injury may result.



**When any abnormality (e.g. a burning smell) is noticed, turn the power off, unplug the unit and consult the SHARP Service Center.**

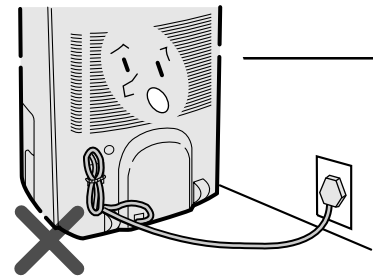
If the unit continues to be operated despite signs of abnormality, a breakdown, electric shock or fire may result.



## Cautions for use

- **Do not operate this product with the power cord still wound onto the cord clamps.**

Otherwise, overheating or fire may result.



- **When the unit stops operating and the liquid crystal indicator shows a blinking “High-temperature” mark: Check whether you use it in a situation or a place as follows. It does not indicate a breakdown. When the compression machine (part of the refrigerating cycle) reaches an abnormal high temperature, the unit stops automatically for safety. During such circumstances, it is necessary to relocate the unit, and to re-start operation again by pushing the Power Switch after a time interval (about 40 minutes). If the “High-temperature” indicator continues to blink, consult the shop where you purchased the unit or an authorized dealer.**



- Check whether the DRY CLOTHES operation is set at “GENTLE” or if the dehumidifying operation is at “LOW”, or if the temperature of the airflow louver of the unit is at 35°C.
- Check whether the air outlet or intake of the unit is obstructed with clothes etc.
- Check whether the unit is operated in a location with inadequate ventilation such as a closet or a narrow space between furniture.
- Check whether the unit is operated in an improper place under direct sunshine, near heating sources or air outlet of hot wind emerging from air conditioners or oil fan heaters.
- Check whether the unit is operated in an area of 3.3 square meter or less.
- **When set to the CONTINUOUS DRY or DRY CLOTHES settings, the unit operates continuously regardless of the ambient temperature or humidity. Since this may cause the room to be very warm and dry, do not operate the unit in either of these modes for an extended period of time when people are present in the room.**

**Please consult the SHARP service center for repair if needed.**

# Proper Uses

For maximum operation efficiency, please minimize opening and closing of windows and doors in the room where the unit is located.

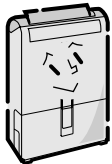
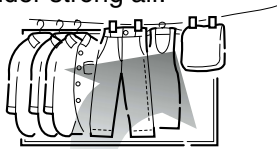
## Dry clothes operation

### Fast

**When you are in a hurry to dry large quantities of clothes.**

A strong air would normally blow in the direction set in accordance with the mechanism of the fan. To hasten clothes drying, put them at the right side of the unit and dry them by adjusting the direction of the airflow louver lever so that the air will blow in that direction.

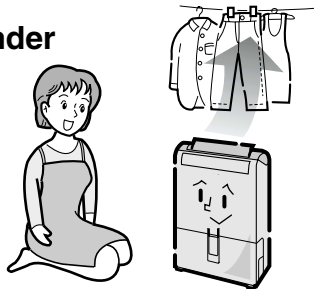
When some clothes are not sufficiently dry, you can dry them effectively by moving them so they can be blown under strong air.



The air normally blows in the right direction.

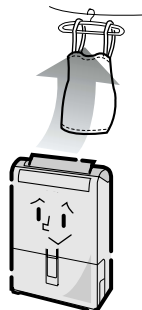
### Standard

**To dry clothes under normal situation**



### Gentle

**To dry lingerie gently and quietly**

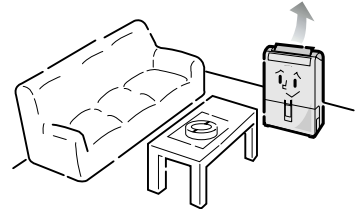


## Dehumid

### Auto dry

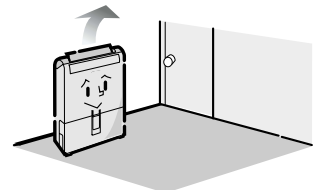
**When you want to keep the humidity of your living room fresh**

\* Also in rooms with musical instruments (piano) which are easily damaged by moisture.



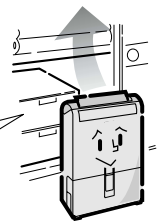
### Room dry

**Dehumidifying mats or carpets**



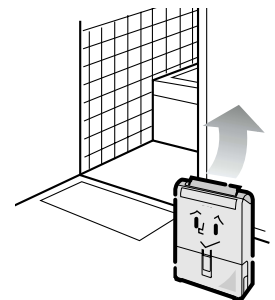
**Dehumidifying clothes in a closet or a chest of drawers**

Open the sliding door and operate the unit in front of it



**Preventing mold formation**

Locations with excessive moisture levels, such as a bathroom-dressing area and a kitchen.



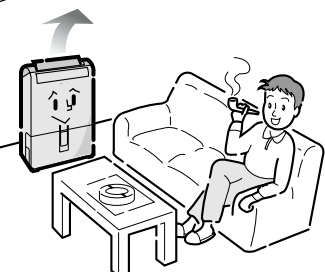
### Continuous dry

**Preventing dew condensation on ceilings, walls or windows**



### Air cleaning

**Removing cigarette smoke, pollen or dust and protecting the room from becoming moldy.**



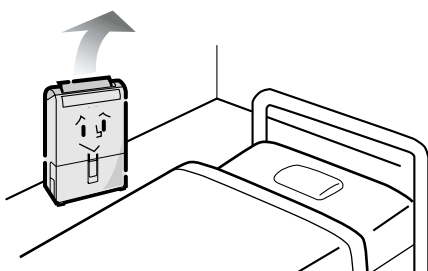


# Preparations Before Using

## Effective uses

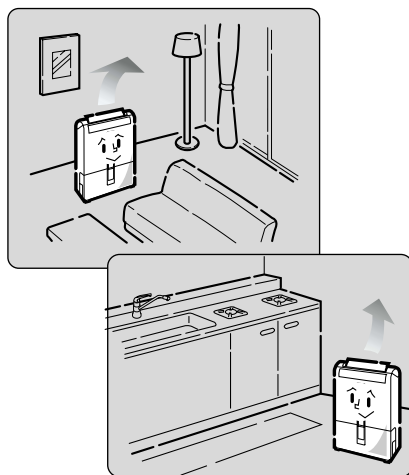
### Dry bedding

It is efficient to dry the bedding etc.



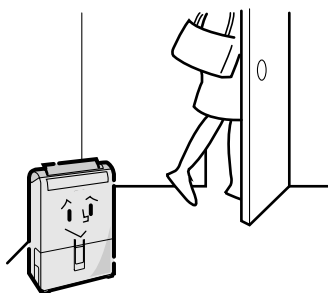
### Living room or kitchen

Dehumidify while you rest.



### While you are away

Set timer before you leave.  
Come home and experience the pleasant surroundings.

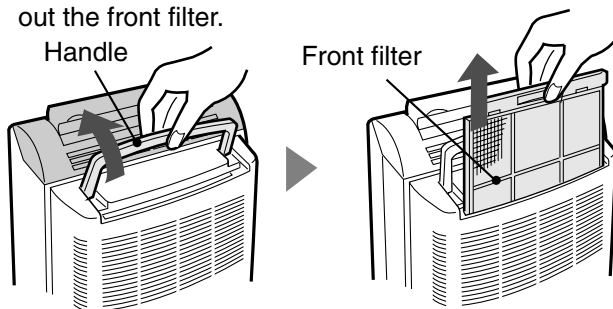


## Installing the filter

1

### Lift the handle.

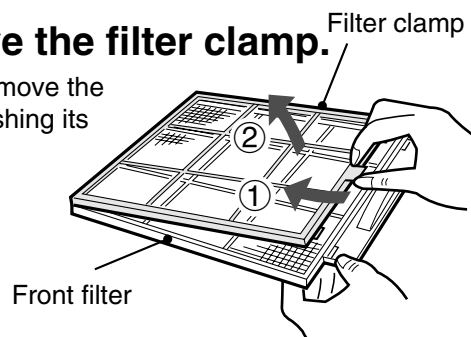
Lift up the handle at the back of the unit, then take out the front filter.



2

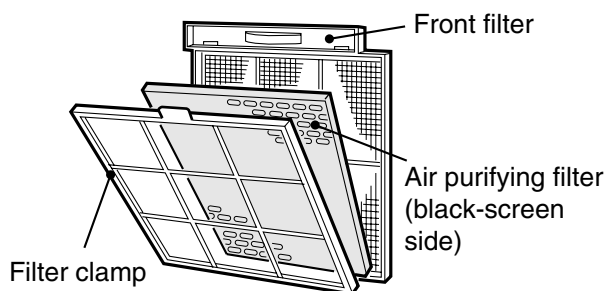
### Remove the filter clamp.

You can remove the filter by pushing its clamp.



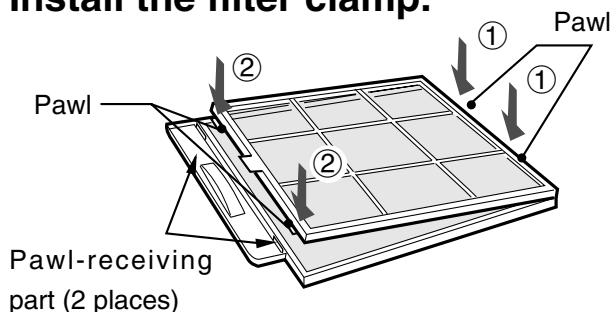
3

### Remove the attached filter from the plastic bag and attach it to the front filter.



4

### Install the filter clamp.



5

### Return the handle to its original position after installing the filter in the unit.

# Part Names and Functions

## Front view

### Handle

Lift when you move.

### Mold multiplication indicator

This serves as a dehumidifying reminder when it turns red in room temperature of about 20°C or more and the humidity of about 70% or more.

### FULL tank lamp (☞ 16)

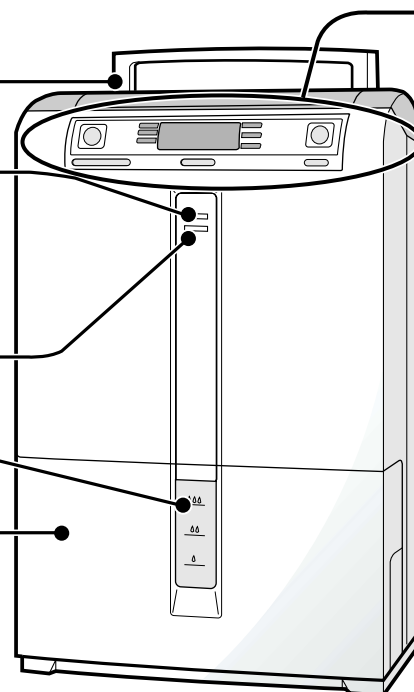
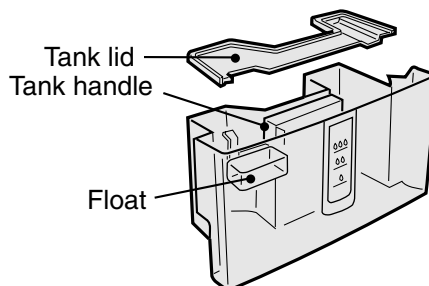
When the water level reaches this FULL line, the lamp blinks in green.

### FULL tank line

When water reaches this FULL line, operation stops automatically.

### Water tank (☞ 16)

Where the dehumidified water is stored. When the water tank reaches the maximum line, operation stops automatically.



## Rear view

### Filter clamp (☞ 7, 18)

### Air purifying filter

(☞ 7, 18, 19, Option ☞ 21)

### Airflow louver lever

### Airflow louver (☞ 13)

Changes airflow outlet in 4-directions according to usage.

### Rear air outlet

### Continuous drainage hole (☞ 17)

Used for draining water continuously

### Cord clamp (☞ 19)

Hanging power supply cord together.

### Band (☞ 19)

(Do not operate the unit with banding the cord.)

### Front filter (☞ 7, 18)

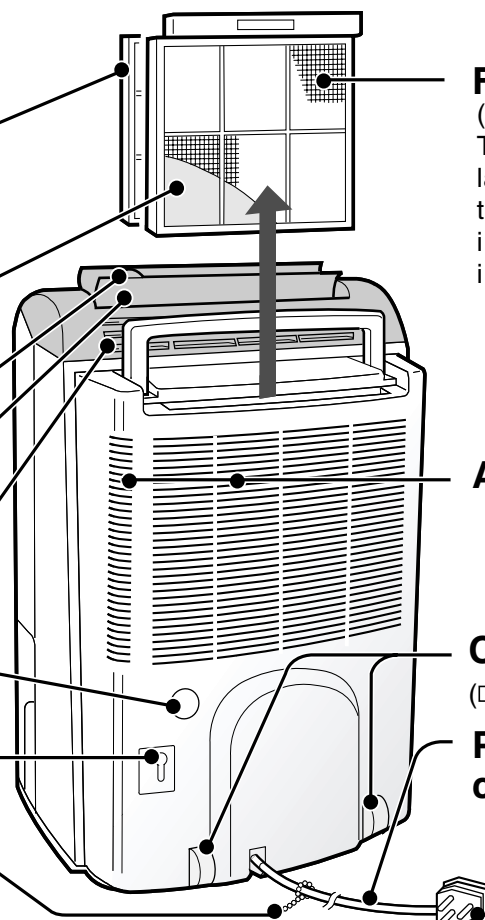
This removes large dust particles passing into the air intake.

### Air intake

### Caster (☞ 17)

### Power cord

### Plug



The numbers following the ☞ symbol indicate the main reference pages for more detailed information.



# Control panel

(Operation Procedure 10)

(The liquid-crystal indicator shows all indications for explanation.)

## Dehumidification mode

### AUTO DRY

Controls humidity automatically between 55 and 60%.

### ROOM DRY

Controls humidity automatically at about 50%.

### CONTINUOUS DRY

Continuous dehumidifying operation by controlling the volume of airflow at "medium" when room temperature is 15°C or more and at "turbo (HIGH)" when 15°C or less.

### CLEAN AIR

CLEAN AIR function is operated independently.

## DEHUMID SETTINGS

button (11, 12)

Switches to dehumidifying operation mode

## Temperature/humidity indicator

Indicates room temperature and humidity (around the unit).

**Comfort indicator** (13)

Indicates comfort levels in a room.

## Airflow volume indicator

Indicates airflow volume.

## DRY CLOTHES mode

### FAST

CONTINUOUS DRY operation, putting the airflow volume at HIGH.

### STANDARD

CONTINUOUS DRY operation, putting the airflow volume at MEDIUM.

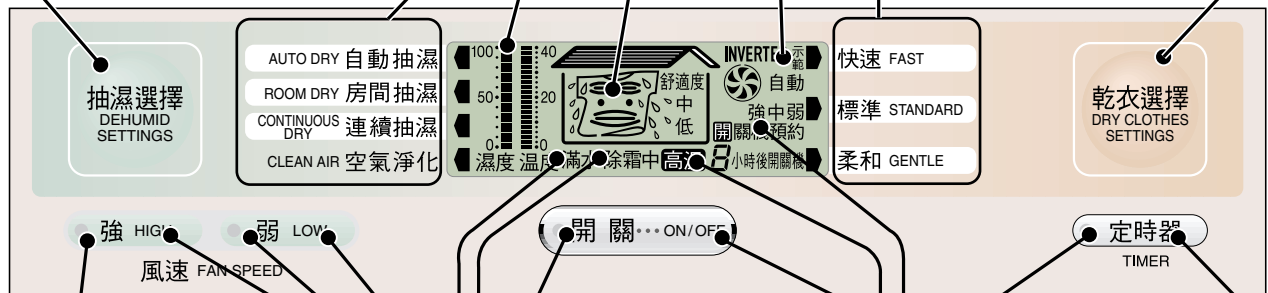
### GENTLE

CONTINUOUS DRY operation, putting the airflow volume at LOW.

## DRY CLOTHES SETTINGS button

(10, 12)

Switches to DRY CLOTHES mode



## Fan speed/HIGH indicator

Fan speed/HIGH, ON/OFF button

AUTO→HIGH

## Fan speed/LOW indicator

Fan speed/LOW, ON/OFF button

AUTO→LOW

The volume of airflow can be switched only when operating in the dehumidifying mode.

## Full tank indicator

## Defrosting indicator (15)

Indicates "Defrosting".

## Operation indicator

(10, 11)

The indicator lights when the unit is in operation.

The indicator blinks under timer-input setting and lights after set up is completed.

## Power ON/OFF button

(10, 11)

Controlling operation of the unit by ON/OFF.

## TIMER indicator

## Timer setting button

(14, 15)

Sets the time to start or stop operation and can be set between 1 to 9 hours.

## ON/OFF TIMER indicator

(14, 15)

"ON" indicates the time interval until operation starts, and "OFF" indicates the time interval until operation stops.

## High-temperature indicator

(5)

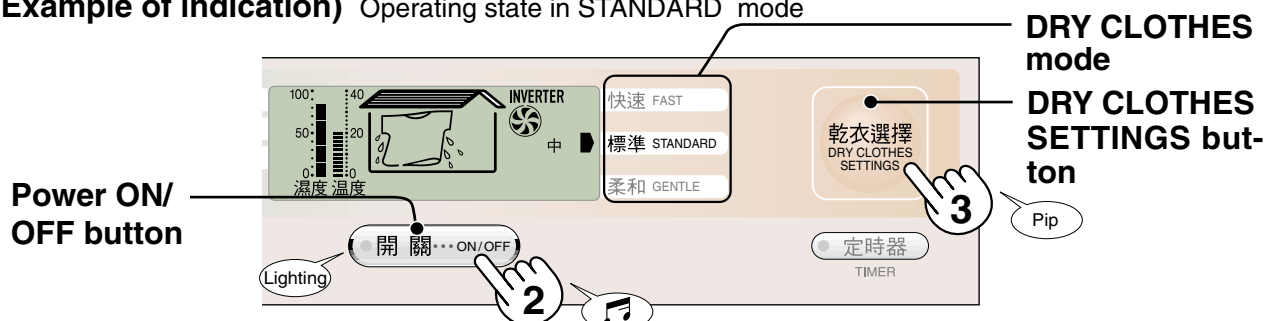
When the temperature inside the unit reaches an abnormally high temperature, operation stops for safety and the indicator blinks.

# Operation Procedure

Operation cannot be started unless the water tank is installed.

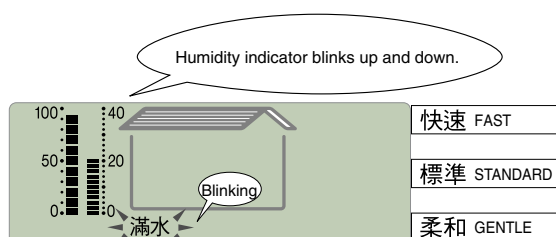
## Dry clothes operation

(Example of indication) Operating state in STANDARD mode



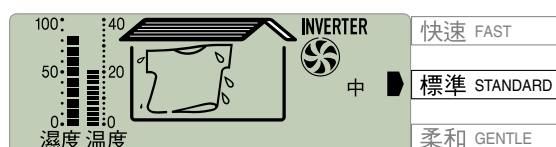
### 1 Insert the plug into the power socket (220V).

- The current humidity will not be displayed accurately for around one minute when the unit is plugged in. This is because the humidity sensor is checking the humidity.
- If the “full tank indicator” blinks, empty the water tank and reinstall the tank properly.



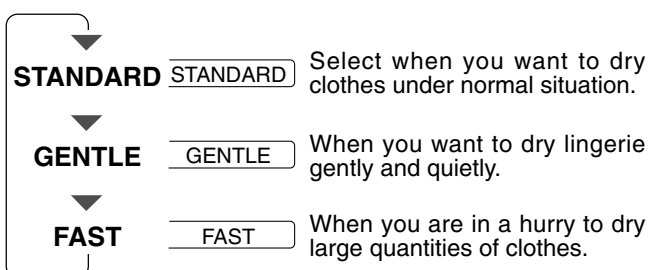
### 2 Press the Power ON/OFF button.

Operation indicator lights, and “STANDARD” operation starts.



### 3 Press DRY CLOTHES SETTINGS button and select operation mode.

Operation mode is sequentially switched.  
(☞ 12)



### 4 Set the airflow direction of the louver.

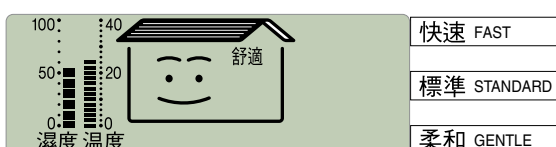
Set the optimum direction of airflow based on the individual usage and purposes.  
(☞ 13)

★ When the drying clothes process is in operation, you cannot use “Fan speed/HIGH, ON/OFF” and “Fan speed/LOW, ON/OFF” button.

## Stop

### Press the Power ON/OFF button again.

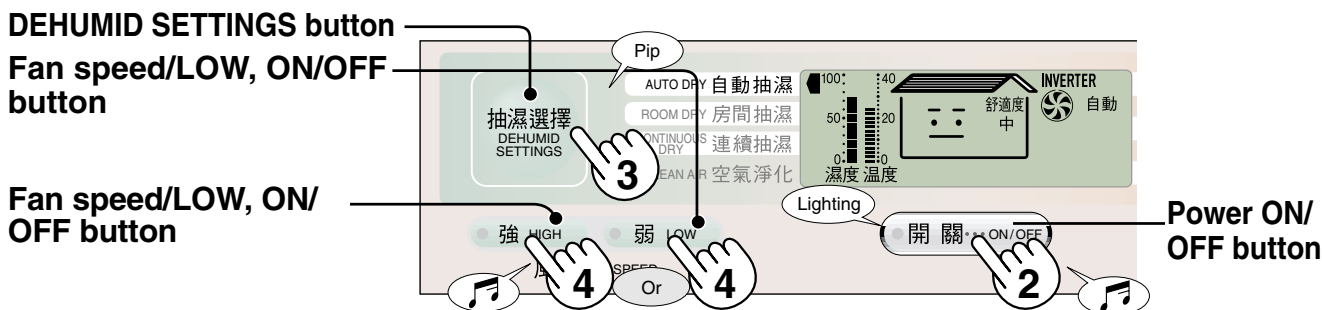
Operation indicator will be turned off and the operation stops. The crystal monitor will continue to show the comfort levels, temperature and humidity of the room even if operation stops.



★ If you press operation key again after the operation has stopped, the operation will start from the last operation mode.

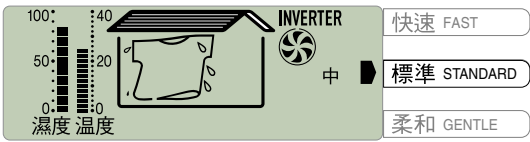
# Dehumidifying operation

(Example of indication) Operating state of a little high humidity in AUTO DRY mode

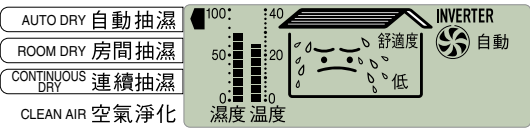


**1** Insert the power plug into the power socket (220V). (same as DRY CLOTHES operation)

**2** Press the Power ON/OFF button.  
Operation indicator lights, and “STANDARD” operation of drying clothes starts. Press the DEHUMID SETTINGS button.  
(When you press the operation button while inserting plug into outlet, or press it during a power failure, the unit is set to start operation in the “STANDARD” mode of clothes-drying process.)



**3** Press the DEHUMID SETTINGS button and select operation mode.  
The operation mode is sequentially switched. (12)  
▶ AUTO DRY ▶ ROOM DRY ▶ CONTINUOUS DRY ▶ CLEAN AIR



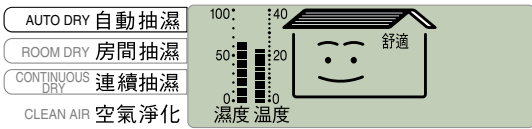
**4** Press “Fan speed/HIGH, ON/OFF” or “Fan speed/LOW, ON/OFF” button.  
Normally, the unit will operate automatically with the volume of airflow according to each operation mode. In case of the following condition, however, press “HIGH” or “LOW” button.

HIGH	LOW
When you need to dehumidify rapidly The indicator lights, and the volume of airflow changes from AUTO to the HIGH operation.	When you want to dehumidify moderately. The indicator lights, and the volume of airflow changes from AUTO to the LOW operation.
Pressing it again will return to the AUTO operation mode.	

**5** Setting the direction of airflow from the blowout louver.  
Set the optimum direction of the blowout based on the individual usage and purpose. (13)

## Stop

**Press the Power ON/OFF button.**  
Operation indicator will be turned off and the operation stops.  
The crystal monitor will continue to show the comfort levels, temperature and humidity of the room even if operation stops.



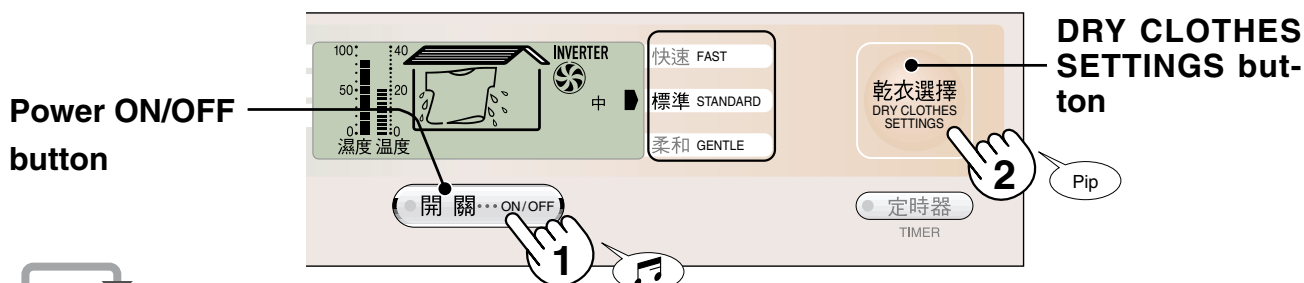
\* If you press operation key again after the operation has stopped, the operation will start from the last operation mode.

# Changing the Operation Mode

## Dry clothes operation

It will be changed in the following order whenever pressing the DRY CLOTHES SETTINGS button. It begins in the STANDARD operation.

(Example of indication) When DRY CLOTHES SETTING is operated.



**STANDARD** This continuously operates at STANDARD "MEDIUM" air volume.

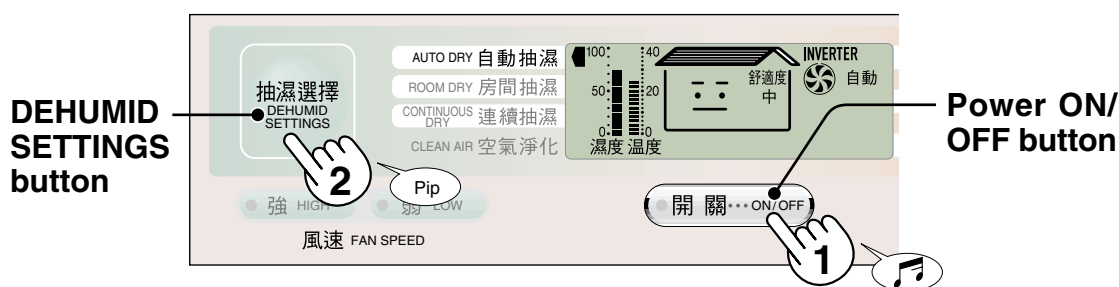
**GENTLE** Select this to dry lingerie gently and quietly. This continuously operates at "LOW" air volume.

**FAST** Select this when you are in a hurry to dry large quantities of clothes. This continuously operates at "HIGH" air volume.

## Dehumid settings operation

It will be changed in the following order whenever pressing the DEHUMID SETTINGS button. It starts at the AUTO DRY operation.

(Example of indication) When DEHUMID SETTINGS operation is carried out.



**AUTO DRY**

**Use the following conditions under a normal dehumidifying operation.**

Humidity in the room is adjusted by the temperature moisture sensor. It will be automatically controlled at a humidity of about 60% at temperature of 27°C or less and at about 55% at 28°C or more. However, dehumidifying operation occasionally vary depending upon the structure or size of the room.

**ROOM DRY**

Humidity (around the unit) in the room can be automatically controlled to about 50% by the temperature-and-moisture sensor.

★ Humidity may not fall to less than 50%, depending upon operating conditions (outside temperature, room size).

**CONTINUOUS DRY**

DEHUMID operation is continuously carried out by controlling the volume of airflow: "MEDIUM" at temperature of about 15°C or more and "HIGH" at about 15°C or less.

**CLEAN AIR**

**Select this when you want to use the unit as a CLEAN AIR device.**

Only ventilation operation is available.

★ The CLEAN AIR function can automatically work in each mode of operation.

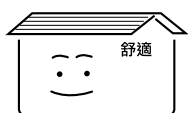
★ During defrosting, no other operation mode can be selected. If you select a new operation mode during defrosting, the mode will switch automatically after completion of defrosting.

# How to see indication

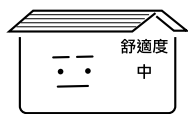
Dehumidifiers do not have an air-conditioning function to adjust temperature. If room temperature is too high or too low, the comfort level indicator will not indicate the proper comfort levels.

## Indication of "standby", "AUTO DRY operation", "CONTINUOUS DRY", "CLEAN AIR operation"

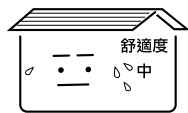
(It measures comfort levels based on humidity and temperature of the room.)



**When it is comfortable**  
When temperature and humidity are comfortable



**When it is a little comfortable**  
When temperature is too high or too low



**When it is a little uncomfortable**  
When humidity is a little high

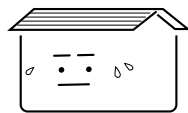


**When it is uncomfortable**  
When humidity is high

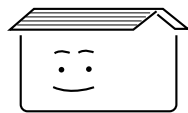
## Indication of "ROOM DRY in operation"



**When humidity is high**



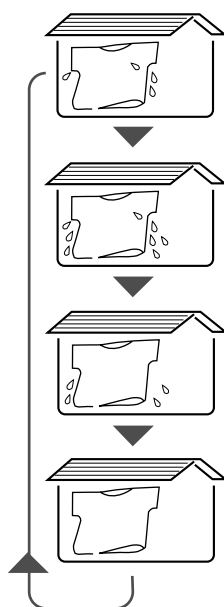
**When humidity is a little high**



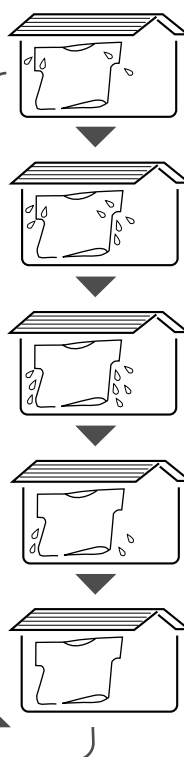
**When humidity is low**

## Indication of "DRY CLOTHES" operation

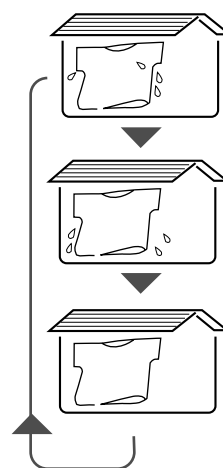
### STANDARD mode



### FAST mode



### GENTLE mode



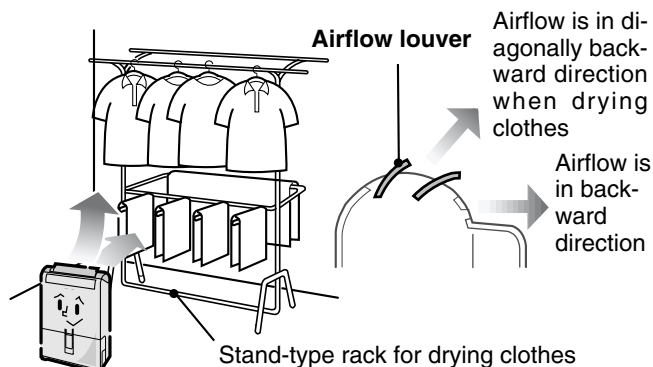
★ Comfort levels will not be indicated in the DRY CLOTHES mode and the ROOM DRY mode.

# Airflow direction is switched

Airflow direction can be changed by switching the lever of the louver.

## Airflow can be changed to upper or lower direction when drying clothes

When using with a stand-type rack for drying clothes



## Airflow is in the diagonally front direction

The entire room is dehumidified.

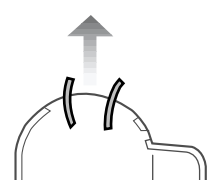
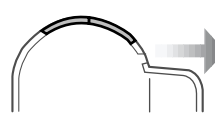
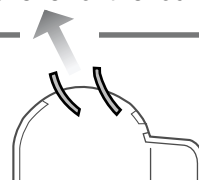
## Airflow is in the backward direction

When a closet or shoe cabinet is dehumidified.

Do not operate a clothes-drying process at "GENTLE" or dehumidifying function with "fan speed/LOW".

## Airflow is in the upward direction

When you are in a hurry to dry a small quantity of clothes.



# How to Operate the Timer

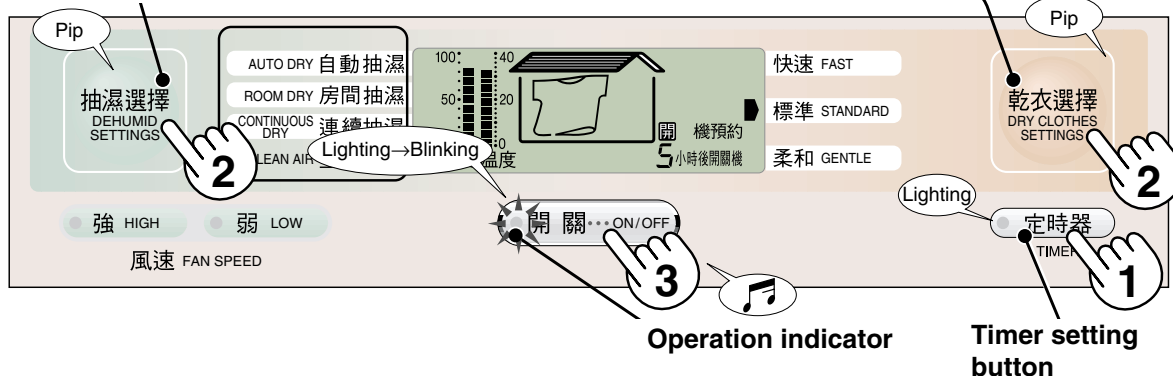
## To set on timer (it can be set only when the unit is shut down.)

(Example of indication) Standard operation of clothes drying mode

Display of ON TIMER after 5 hours

DEHUMID SETTINGS button

DRY CLOTHES SETTINGS button



### 1 Press timer setting button. (You will hear beeping sounds for about one minute after pressing the key for about 5 seconds.)

- When you note that the “ON” on the liquid crystal indicator starts to blink this indicates that the timer has been set “ON” after 1 hour. Select set-time of TIMER since the indication shifts at an hour intervals by pressing Timer setting button as follows:

1 ▶ 2 ▶ 3 ..... 8 ▶ 9 ▶ **No indication** (set release)

- The indication will continue to shift automatically by pressing the Timer setting button.

### 2 Press DEHUMID SETTINGS button or DRY CLOTHES SETTINGS button.

- Press DEHUMID SETTINGS button when you select DEHUMID operation mode other than “AUTO DRY”. (The AUTO DRY is indicated as “■ mark” on the operation mode.)
- In case of DEHUMID operation mode, it is possible to operate by “Fan speed/LOW, ON/OFF” or “Fan speed LOW, ON/ OFF”. Select and press either of them. Press DRY CLOTHES SETTINGS button when you select a DRY CLOTHES mode other than “STANDARD”. (STANDARD is indicated as “▶ mark” on the operation mode.)

### 3 Press Power ON/OFF button.

- The operation indicator will stop blinking when the Power ON/OFF button is pressed, and the ON TIMER operation will be enabled or set. “ON” on the liquid-crystal indicator shifts from blinking into lighting.
- The TIMER indicator figure will decrease sequentially by “1” following each 1 hour lapse after the TIMER was set.

(Example) shifts to 8 hours after 9 hours.

**Example** If you set ON TIMER operation as “after 5 hours,” ▶ The operation starts after 5 hours.

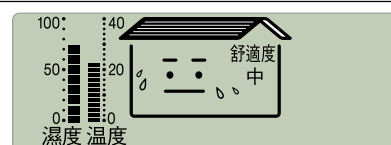
#### Attention

- Dispose of water in the tank, since the ON TIMER operation cannot be set when the Full tank lamp or Full tank indicator is on.
- It is possible to shift from “DEHUMID SETTINGS” or “DRY CLOTHES” operation mode after the ON TIMER operation is set. Change it by pressing either of the button.
- You cannot change the starting time of operation after the ON TIMER operation has been set. To reset, you need to cancel ON TIMER operation.

## How to cancel ON TIMER operation

Press the power ON/OFF button.

Operation indicator, “開 TIMER”, “ON after ○ hours” on the liquid-crystal part, and “■ mark” on operation mode indicator are all turned off. Then ON TIMER operation is released.

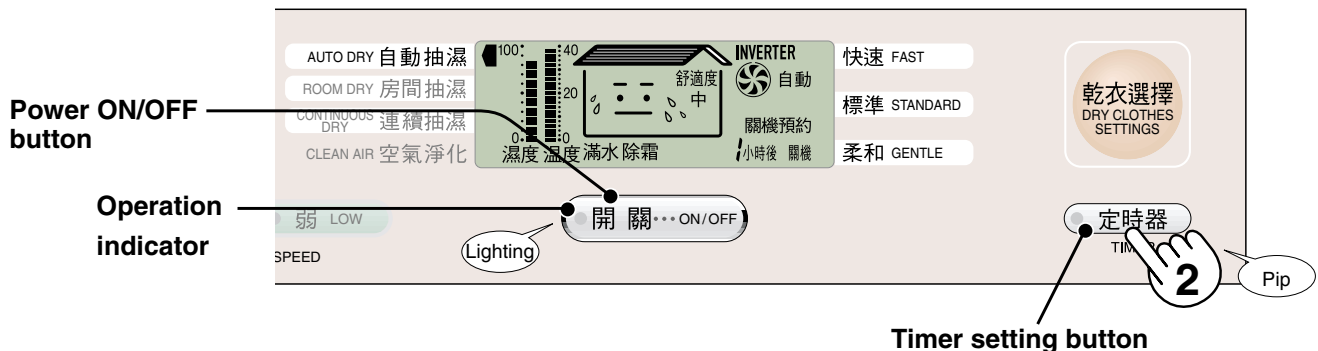


(Example of indication): indicating state of ON TIMER operation release



## To set off timer (it can be set when the unit is in operation)

(Example of indication) AUTO DRY operation at dehumidifying mode. (Indication of OFF TIMER after 1 hour)



**1** Operation indicator is lit on and is confirmed to be in operation.

**2** Press TIMER button

Indicating set-time of OFF TIMER as "OFF after 1 hour".

- Select set-time of TIMER since the TIMER shifts sequentially in order as follows. (one-hour interval)

1 ▶ 2 ▶ 3 .....▶ 8 ▶ 9 ▶ **No indication** (set release)

The indication automatically shifts by continuously pressing Timer setting button.

- The TIMER indicator figure will decrease sequentially by "1" following each 1 hour lapse after the TIMER was set. (Example) shifts to 8 hours after 9 hours.

**Example** If you set OFF TIMER operation as "after 5 hours", ▶ The operation stops after 5 hours.

★ Dispose of water in the tank before setting up the TIMER.

(When water in the tank reaches the FULL line, the operation stops and the remaining time also stops its lapse.)

### Attention

- A melody sounds for 3 seconds when OFF TIMER is completed (when operation has stopped).
- After timer operation has been set, the shutdown time can be changed by pressing the Timer setting button again.

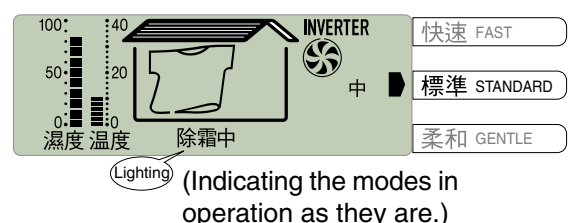
## To cancel Off Timer

You can cancel OFF TIMER by pushing TIMER button until no indication appears.

## Defrosting

If the room temperature is below 16°C, frost may form on the cooling device of the dehumidifier, and the automatic defrosting function will automatically switch on.

- During defrosting, air flow is stopped and the sound of operation will change. (The defrost indicator will turn on during defrosting.)
- The length of time that defrosting will operate will vary according to room temperature and humidity, but will be carried out for 5 minutes at 45 minute intervals. (The duration of a defrost cycle will be longer when the temperature is lower.)



(Indicating the modes in operation as they are.)

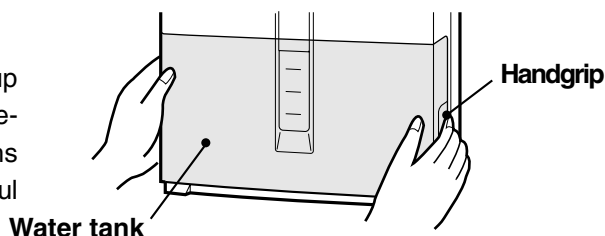
# Emptying the Water Tank

When taking out the water tank, the front full tank green lamp will light up, the FULL tank indicator on the liquid crystal display will start to blink, and the unit stops its operation.

If the water tank fills to a level of approx. 5.7 liters, the operation stops automatically. Then an electronic beep sound will be emitted for 8 seconds, and the “full” indicator light will blink showing that the water tank is full. Empty the tank as shown below.

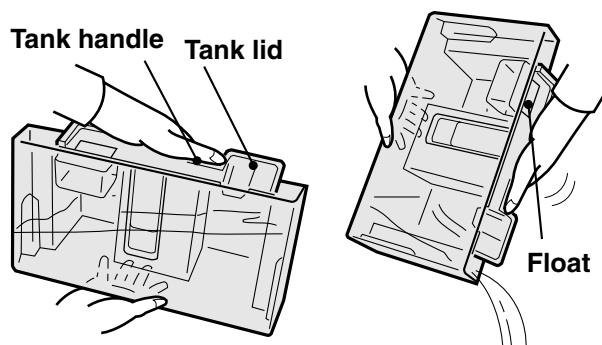
## 1 Remove the water tank.

Open the front door, pull out the tank by pushing up the tank handgrip a little and take the tank out carefully by holding it with both hands. The tank weighs about 6.6 kg when it is filled up to the limit. Be careful to avoid getting injured when taking it out.



## 2 Empty the water tank.

- The drainage tank can be carried by holding the tank handle.
- Empty the water tank, clean the tank and wipe off excess water outside the tank.
- If water remains on the float, the automatic stop function of the dehumidifier will not work properly. So make sure to wipe away the water from the float.



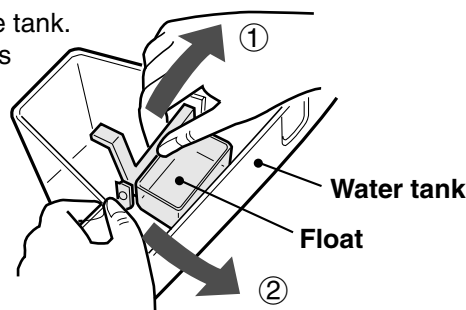
## 3 Put in the water tank.

- (1) Make sure “Tank lid” fits securely in the outer of the tank.
- (2) Put the water tank firmly into the unit until it touches the back of the unit.

### How to detach and install the tank lid and float

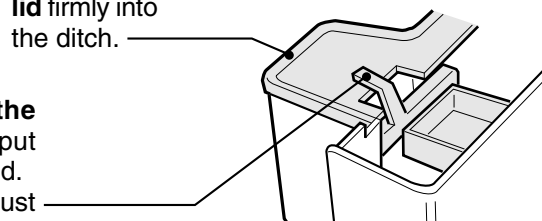
- (1) Detach the tank lid gradually from the left or right toward the opposite side.
- (2) As shown in the diagram, push the float into the “1” direction and remove it from the hole.
- (3) Draw the float out in the “2” direction while pushing it as it is.
- (4) When attaching it, install it properly into the original position in reversing the procedures (“2” to “1”).

- Make sure to push the float in the tank. Otherwise water might spill in the unit or operation cannot stop when the tank is filled up to the limit. Do it carefully.



Fix the tank lid firmly into the ditch.

The lever of the float must be put over the tank lid. The rotation must be smooth.



## Cautions

- **Do not remove the water tank immediately after the unit is turned off.** Otherwise water remaining in the cooling device may drip inside the unit. (If any water spills, wipe it off with a soft cloth.)
- **Do not touch anything inside the unit after the water tank is removed.** (Otherwise when the tank is full, the automatic stop function may not work properly.)
- **Before moving the unit, make sure to turn it off and drain the water from the tank.** Otherwise water may spill out onto the floor.

- **At low temperatures, water may freeze in the unit's cooling system instead of collecting in the water tank.** Note that this is not a sign of failure.

# Continuous Drainage

## Cautions when using the unit with continuous drainage

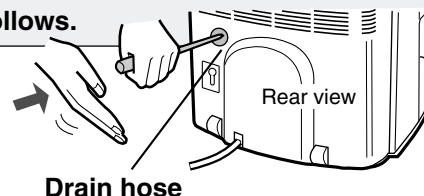
- This dehumidifier is for home use. If you use it with continuous drainage, make sure to have a thorough check for the following at least once every two weeks: dirty front filter, clogging of water hose, and resumption of operation after a power failure. This will help to ensure trouble-free operation.
- When a drain hose is to be used, make sure that the temperature around the hose does not fall below 0°C. Water in the one might freeze causing undrained water to spill and wet household furniture or appliances.

To run the dehumidifier continuously it is necessary to have a suitable drainage point for accumulated water.

Make sure to turn the unit off and then unplug it. Then proceed as follows.

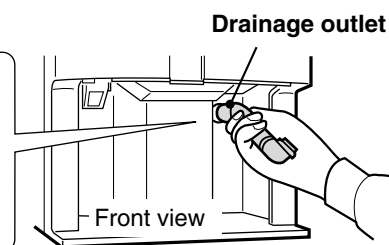
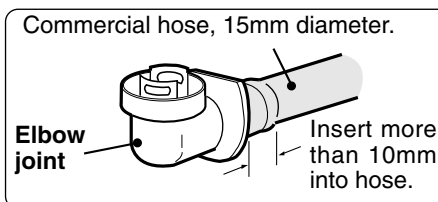
### 1 Open a drain hose hole.

Remove the water tank. Using a screwdriver, punch a hole at the drain hose hole located at the back of the unit. Smoothen the edge of the hole with a hammer etc.



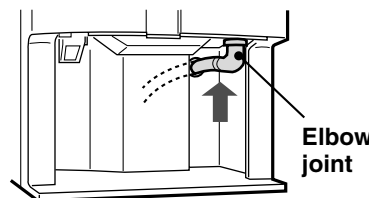
### 2 Insert the elbow joint into a hose (available at hardware shop), and insert the hose through the drain hose hole.

Remove the water tank. Insert the hose through the drain hose hole.



### 3 Insert elbow joint into the unit.

Insert the elbow joint into the drainage outlet of the unit all the way to the joint base.

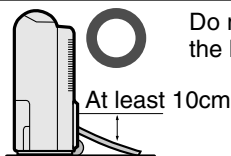


### 4 Re-install the water tank.

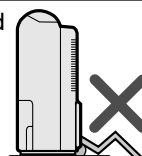
The unit does not operate without the water tank in place. (The unit is turned off with water-brimmed direction device in the unit.)

#### Positioning of the drainage hose for continuous dehumidification

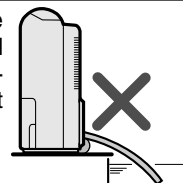
The hose must be below the level of the drainage hole.



Do not bend the hose.



The end of the hose should not come in direct contact with water.

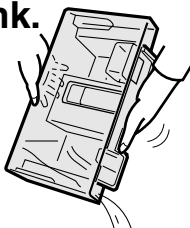


To stop continuous drainage and return the dehumidifier to its original state

Pull the hose towards you. Then remove the hose from the continuous drainage outlet (The drainage outlet should be sealed with sticky tape, or other suitable means.)

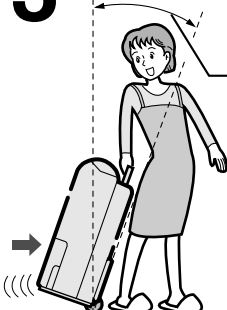
## Move (by using caster)

### 1 Drain water from the tank.



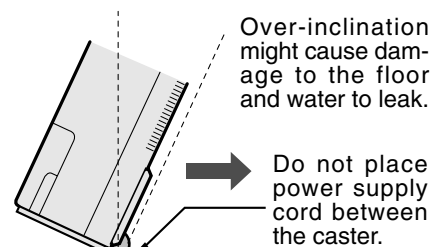
### 2 Lift the carrying handle. (P. 7)

### 3 Incline the unit.



Incline the unit at an angle of 20 to 30 degrees by putting your foot on the back of the unit.

### 4 Move



#### Cautions

- Do not take out the water tank immediately after operation has stopped to prevent water leakage.
- Move the unit by lifting it up when the floor is easily damaged or at a rugged place. Do not use the caster on a thick-piled carpet. This can cause damage to the surface of the carpet.

# Maintenance

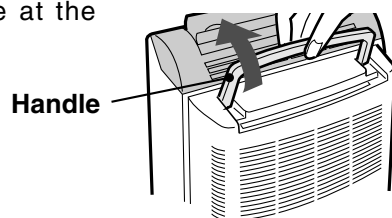
- For safety purposes, turn off and unplug the unit before carrying out any maintenance.
- For clean, sanitary and pro-long use, regular maintenance is recommended.

## Front filter

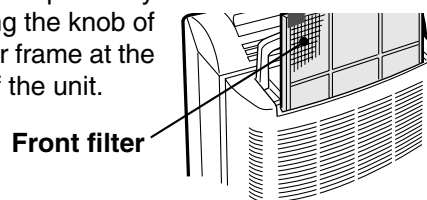
Make sure to clean the front filter once every two weeks. If the filter is clogged with fine dust, the air flow rate will drop and dehumidification efficiency will be reduced.

### 1 Remove the front filter by lifting the handle.

Lift it up by grasping the carrying handle at the back of the unit.

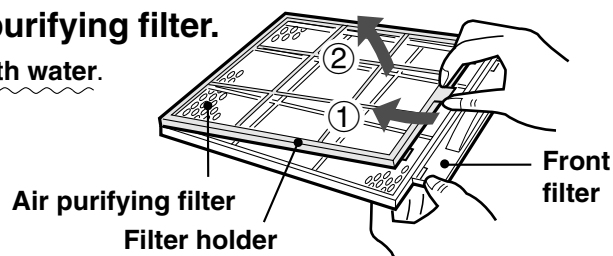


Pull it out upward by grasping the knob of the filter frame at the back of the unit.



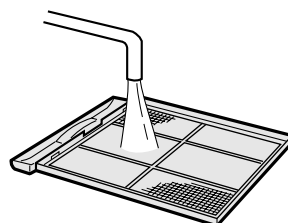
### 2 Remove the filter holder and the air purifying filter.

**Make sure not to wash the air purifying filter with water.**  
Otherwise this might render the filter useless.

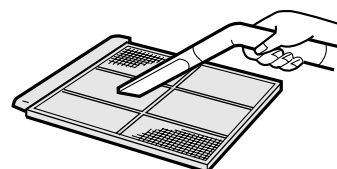


### 3 Wash the front filter.

A dirty front filter can be cleaned with water, neutral detergent diluted in warm water or with a vacuum cleaner. When cleaned with water, dry it well in the shade.



**(When washing with water)**  
The dirty surface should face downward.



**(When cleaning with a vacuum cleaner)**  
The dirty surface should face upward.

### 4 Attach the air purifier filter to the front filter and put it back in the unit. (☞ 7)

## Main body

Wipe off any dirt from the unit using a piece of soft cloth soaked in warm water (40°C max.) or with detergent.

- If detergent is used, make sure to wipe off the detergent with a damp cloth.
- The air intake and outlet become dirty easily, so make sure to clean them well.
- To clean the water tank, use a soft sponge.

### Cautions

- If water is allowed to splash on the unit, electrical insulation may be affected and corrosion of the unit may eventually result.
- Use a neutral detergent (e.g. for dish washing) for cleaning.
- Do not use the following types of cleaning agents as they will damage plastic parts.

Thinners, benzene, alcohol, petrol, powder soap, powder polish, alkaline washing agents, hot water, acid or scrubbing brushes.

- Do not scrub or expose the unit to chemically treated cloths for any prolonged period of time as this may damage the surface of the unit.

# Changing the air purifying filter

The required frequency for changing the air purifying filter will depend on where the unit is operated. It is highly recommended that the filter is checked regularly.

## Signs that the air purifying filter needs to be changed

**Generally a filter should be changed after six months from the time it is unpacked** (depending on the place and conditions of use).

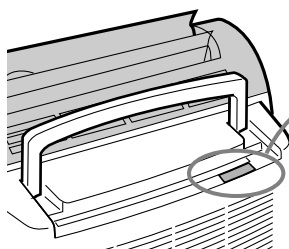
- When the unit is exposed to oily smoke or soot, filters will need to be changed at much shorter intervals.

### Cautions

Air purifying filters cannot be reused even after being washed.  
A reused filter is ineffective and may even result in damage to the unit.

## How to replace

- 1** You are required to purchase the “air-purifying filter,” (Model: DW-10C) as options (chargeable). Refer to page 7 on “Installing the filter” for how to replace it.




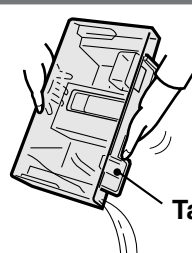
Date of label

日付ラベル  
**DATE LABEL**  
(使用開始日: . . . )  
(STARTING DATE OF USE: . . . )

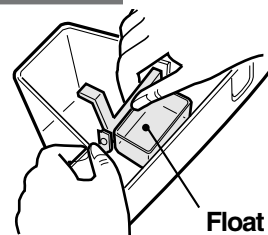
- 2** Fill in a use-start date on the following label after you have replaced the filter.

## If the unit is not used for a long time

- 1 Empty the water tank completely.**  
Remove the tank lid and float and wipe away excess water in the tank.  
(Refer to  16 on “How to detach and install the tank lid and float”).



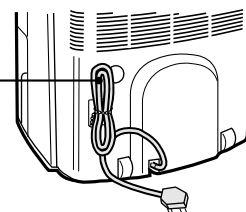
Tank lid



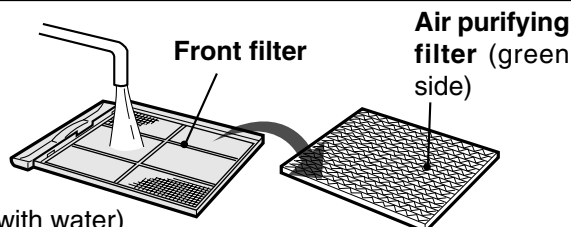
Float

- 2 Wind the power supply cord around the clamps on the rear panel.**

Power supply cord



- 3 Clean the front filter.** ( 18)  
Do not clean the air purifying filter with water.  
If purifying filter becomes too dirty, please replace it with a new one.



(When cleaning with water)

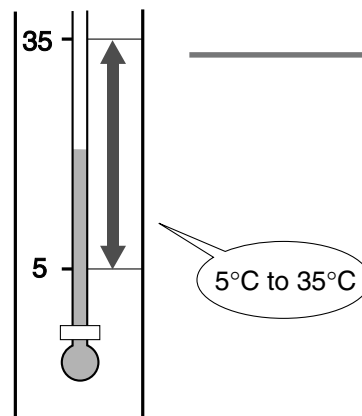
### Storage

- Dry the unit thoroughly and cover with a sheet for dust protection. Store the unit in a well ventilated place that is not exposed to direct sunlight.
- If the unit is left uncovered without any protection, dust will accumulate so that the air emitted by the unit will be dusty next time the dehumidifier is used.

# General Reference

## The temperature at which the unit can be operated is 5°C to 35°C.

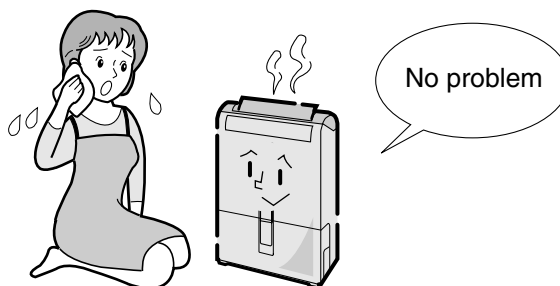
If the room temperature is over 35°C, the built-in protection system will automatically turn off the unit. If the room temperature is below 5°C, water may freeze and cause a failure to the unit.



## Dehumidifying operation increases room temperature.

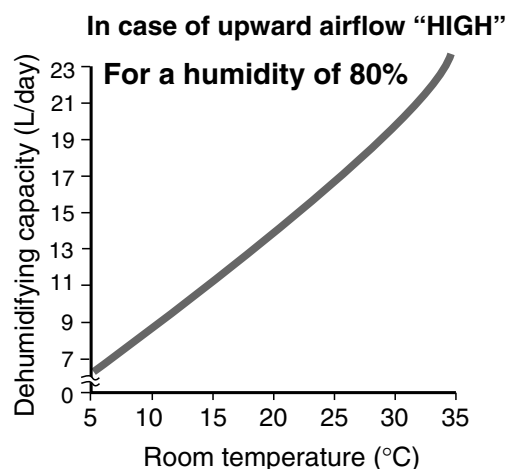
### The dehumidifier does not have a cooling function.

As the unit produces heat during operation, room temperature may actually increase by about 2°C to 5°C (depending on the outdoor temperature and size of the room).



## Dehumidification capacity will vary based on room temperature and humidity.

Dehumidification capacity will increase as temperature rises (as shown in the chart on the right).



## Wait for 3 minutes before restarting the unit

If the unit is turned off, wait for at least 3 minutes before restarting operation.

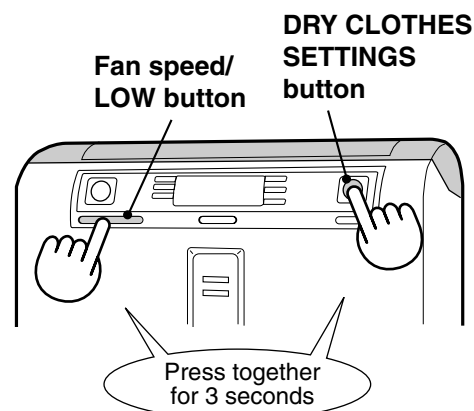
If the unit is restarted immediately, the compressor will wait for 3 minutes to start up as part of the unit's self-protection system.

## To shut off the tank full alarm

Follow the steps below to disable the tank full alarm:

- ① Plug the power plug into the socket.
- ② Simultaneously press the "DRY CLOTHES SETTINGS button" and "Fan Speed/LOW button" for 3 seconds.
- ③ Remove the water tank. If the alarm does not sound, the procedure is complete. If the alarm continues to sound, repeat the above steps.

★ To restore the tank full alarm, unplug the power cord.



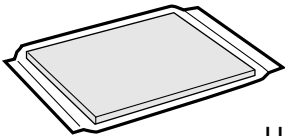
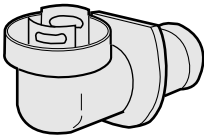


# Specifications

Model		DW-208EX
Frequency		50Hz
Rated voltage		220V
Rated dehumidification capacity	L /Day	20.0
Rated power consumption	W	310
*Stand by mode	W	3.5
Dehumidification area	m <sup>2</sup>	25 ~ 50 (Wooden houses ~ concrete houses)
Water tank capacity	L	Approx. 6.4 (Automatic stop at 5.7)
Weight	kg	13.5
Outside dimensions	mm	380 (W) x 275 (D) x 589 (H)
Length of power supply cord	m	Available length approx. 1.8

- The capacity rating is based on a day's operation at a temperature of 30°C and relative humidity of 80%. (AUTO DRY, ROOM DRY, CONTINUOUS DRY: FAN SPEED/HIGH ON)
- Power consumption ratings are based on operation at a temperature of 30°C and relative humidity of 80%. (AUTO DRY, ROOM DRY, CONTINUOUS DRY: FAN SPEED/HIGH ON)
- The dehumidification area is based on Japanese Electrical Manufacturers' Association (JEMA) Standards.
  - ★ The term "stand-by" means that the dehumidifier is kept at "OFF" position even though its plug has been inserted into the power socket.

## Supplied Accessories

<b>Air purifying filter</b> (1)	<b>Elbow joint</b> (1)	<b>Printed matter</b> • Operation manual
		
Used for hose connection for continuous water drainage.		

## Optional Accessories

### Air purifying filter (for replacement)

(This removes the smell of cigarette smoke, fine dust etc.)

- Model: DW-10C

To purchase this filter, specify this model number to the store where you purchased the product or to the SHARP service center.



# MEMO

[illegible]

# MEMO

[illegible]

# Before Calling for Service



If you think the unit is not working properly, check the following points before calling for service.

Symptoms	Check Points
Unit does not operate when power ON/OFF button is pressed.	<ul style="list-style-type: none"> <li>● Has it been 3 minutes or more after inserting power plug? (☞ 20)</li> <li>● Is the water tank installed properly?</li> <li>● Is the water tank full?</li> <li>● Is the unit plugged in properly?</li> <li>● Has there been a power failure?</li> <li>● Does the time indication part of TIMER on the liquid-crystal display express alternately the figure “—” • (full stop). If so, contact the shop you purchased after pulling out the power plug.</li> </ul>
Dehumidification capacity has dropped.	<ul style="list-style-type: none"> <li>● Has the usable period (about 6 months) of the filter passed or is the filter clogged?</li> <li>● Is the front filter clogged?</li> <li>● Is the air outlet or intake obstructed?</li> <li>● Is the temperature and humidity of your room too low?</li> <li>● Is the operation mode set to air purification?</li> </ul>
Humidity does not reduce in any of the operating mode.	<ul style="list-style-type: none"> <li>● Is your room too big?</li> <li>● Are the windows or doors opened and closed frequently?</li> <li>● Are there any devices that produce water vapor in the same area, such as a kerosene heater?</li> <li>● Is the operation mode set to air purification?</li> </ul>
Displayed humidity is different from actual humidity.	<ul style="list-style-type: none"> <li>● Displayed humidity is not accurate when the water tank is full or when the unit is just turned on.</li> <li>● Displayed humidity indicates the ambient humidity around the unit. This may be different to the humidity in a different location in the same room.</li> </ul>
Operation is noisy.	<ul style="list-style-type: none"> <li>● Is the dehumidifier properly installed on a stable base?</li> <li>● Is the floor flat?</li> <li>● When the unit starts its operation at a low temperature, the sound might increase for several seconds. (The time depends on the temperature condition.)</li> </ul>
Water is leaking.	<ul style="list-style-type: none"> <li>● Has the unit been knocked over, or has it been tilted or dropped?</li> <li>● Is the pipe connection or hose connection for continuous drainage in place? (☞ 14)</li> </ul>
The unit repeats operating and stopping.	<ul style="list-style-type: none"> <li>● Is humidity automatically controlled by AUTO DRY mode or ROOM DRY operation? (☞ 12)</li> </ul>
The “High-temperature” indicator on the liquid-crystal display blinks and the operation stops.	<ul style="list-style-type: none"> <li>● If the “High-temperature” still continues to appear after checking it again based on page 5 “Cautions for use”, contact the shop you purchased or your dealer after pulling out power plug.</li> </ul>