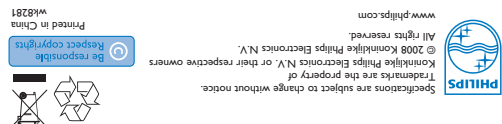


Quick start guide



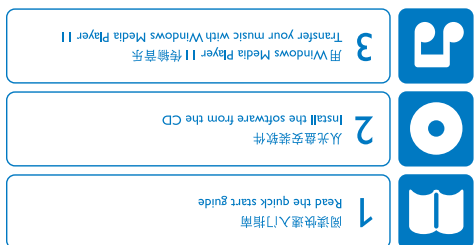
- 1 Install
- 2 Connect and Charge
- 3 Transfer
- 4 Enjoy

PHILIPS



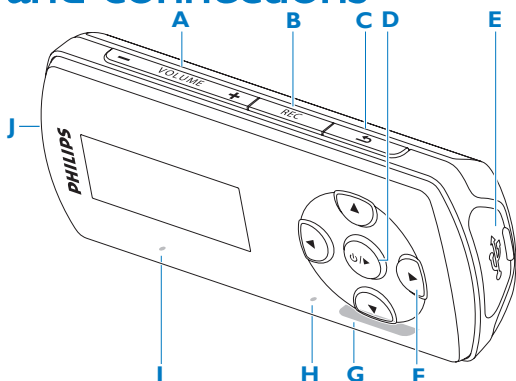
2 联系 Philips | Contact Philips
1 请访问 www.philips.com/support | Visit www.philips.com/support

需要帮忙吗? | Need help?



从这里开始 | Start here

Overview of controls and connections



A -VOL +	Increases / decreases volume (hold to increase / decrease fast)
B REC	Record (long press)
C ↶	Back one level (hold to return to root menu)
D ⏻ / ⏻	On / Off Play/Record / Pause Confirm selection
E USB	USB connector
F ⏮	Skip back (hold to quick skip)
G ⏭	Skip forward (hold to quick skip)
H ⏮ / ⏭	Scrolls up/down (hold to quick scroll)
I slider	Hold slider to lock/unlock all keys (except -Vol+)
J RESET	Reset button
K MIC	Microphone
L Headphone jack	Headphone jack

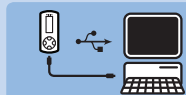
1 Install

- 1 Insert the CD supplied with your product into the CD ROM drive of your PC.
- 2 Follow the on-screen instructions to complete the installation of **Windows Media Player** and **Philips Device Manager**.

2 Connect and charge

A Connect to PC

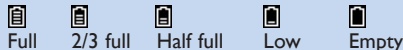
When you connect the player to the PC, it automatically charges.



- 1 Before you use the player for the first time, charge it for at least 5 hours.
> The battery has a 100% charge after 4 hours and an 80% charge after 2 hours.
- 2 Connect the supplied USB cable to the mini USB port at the bottom of the player; the other end to your PC.
> The player will start to charge as soon as it is connected to your PC.

B Read the battery level indication of your player

The approximate power levels of your battery are indicated as follows:

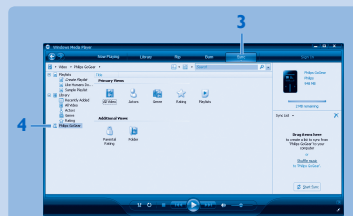


Note When the batteries are almost empty, the low battery screen blinks. The player saves all settings and unfinished recordings and switches off in less than 60 seconds.

3 Transfer

Transfer music and pictures with Windows Media Player 11

Download Windows Media Player 11:
<http://www.microsoft.com/windows/windowsmedia/player/11/default.aspx>



- 1 Start **Windows Media Player 11**.
- 2 Connect the player to your computer using the supplied USB cable.
- 3 Once the player is connected, the sync tab changes as shown () and the device and its contents become visible in **Windows Media Player 11** (see figure above).
- 4 **Windows Media Player 11** will automatically start synchronizing the contents of your music library to your player.

For details on how to set synchronization options in **Windows Media Player 11**, pls refer to the user manual.

4 Enjoy

A Turn on and play

To turn on, press until the display shows the **Philips** logo.
To turn off, press and hold until the display shows 'bye'.

Tip If the player is idle and no button is pressed for 10 minutes, it switches off automatically.

B Main menu

	Music	Play your digital music tracks
	Radio*	Listen to FM radio
	Recording	Create or listen to recordings
	Folder view	View files in folders
	Settings	Customize the settings of your player

C Navigate the menu

Your player has an intuitive menu navigation system to guide you through various settings and operations.

Goal	Action
Return to previous menu	Press
Return to main menu	Press and hold
Browse through menus	Press or
Scroll through a list	Press
Selection an option	Press

Music mode (also play mode for recordings)

The player offers the following music mode options:

Goal	Action	Goal	Action
Play / Pause music	Press	Fast rewind	Press and hold
Skip to next audio file	Press	Return to browsing menu	Press
Return to previous audio file	Press	Increase volume	Press Vol +
Fast forward	Press and hold	Decrease volume	Press Vol -

Radio*

From the main menu, select to enter radio mode.

Connect the headphones

The supplied headphones serve as a radio antenna. Ensure you connect the headphones properly for an optimal reception.

Auto tune

- 1 From the Radio menu , select **Auto tune**.
> The radio automatically tunes radio stations and saves the frequencies to presets.
The radio can store up to 20 radio station to presets.

Play a preset radio station

- 1 From the Radio menu , select **Presets**.
- 2 Press to select preset, to start playing.
- 3 Press to change to another preset.
- 4 To fine tune frequency, quick press .
- 5 To search for the next stronger signal, long press .

To exit radio, long press .

Recordings

You can record audio with the player.

Make recordings

- 1 Long press from all screens except Radio.

> The player records and shows the recording display.
- 2 Press to pause.
- 3 Press to stop and save the recording.
> Your recording will be saved on the player. (Filename format: VOICEXXX.WAV where XXX is the recording number which will be automatically generated.)
- 4 You can find this file under > **Voice**.

TIP You can pause and restart a recording anytime with .

Play back recordings

- From the main menu, select > **Voice**.
- 1 Select the recording you want to hear.
 - 2 Press to confirm.

Troubleshooting

How do I reset my player?

Insert a small pin or other sharp object into the reset hole located at the bottom of the player. Hold until the player shuts down.

If none of the above works, then you may have to use the Device Manager to recover your player:

- 1 Launch the **Philips Device Manager** at **Start > Programs > Philips Digital Audio Player > SA44XX > Philips SA44XX Device Manager** on your PC.
- 2 Press and hold the **VOL+** button while your player is connecting to the PC.
- 3 Keep holding the key until the **Philips Device Manager** acknowledges your player and goes into recovery mode.
- 4 Click the **Repair** button and follow the instructions given by the **Device Manager**.
- 5 After the player has been repaired, disconnect it from your PC and re-start.

Need help?

User Manual See the user manual that came with your player.
Online Go to www.philips.com/welcome

Disposal of your old product

Your product is designed and manufactured with high quality materials and components, which can be recycled and reused. When this crossed-out wheeled bin symbol is attached to a product it means the product is covered by the European Directive 2002/96/EC. Please inform yourself about the local separate collection system for electrical and electronic products.

Please act according to your local rules and do not dispose of your old products with your normal household waste. The correct disposal of your old product will help prevent potential negative consequences for the environment and human health. The built-in rechargeable battery contains substances that may pollute the environment. Always hand the appliance in at an official collection point to remove the battery before discarding the appliance. Battery should be disposed of at an official collection point.

* This feature is available only in some regions.

快速入门指南



- 1 安装
- 2 连接和充电
- 3 传输
- 4 欣赏

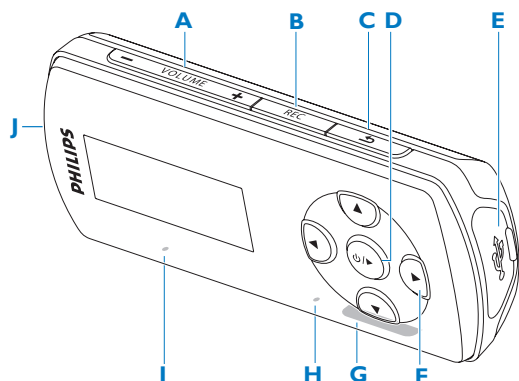
PHILIPS

Specifications are subject to change without notice.
Trademarks are the property of
Koninklijke Philips Electronics N.V. or their respective owners
© 2008 Koninklijke Philips Electronics N.V.
All rights reserved.
www.philips.com



Printed in China
wk8281

控件和连接概述



A -VOL +	增大/减小音量 (按住可快速增大/减小)
B REC	录音 (长按)
C ↶	返回一个级别 (按住可返回到根菜单)
D ⏻ / ▶	开/关 播放/录音 暂停 确认选择
E USB	USB 接口
F ⏮	向后跳转 (按住可快速跳转)
▶	向前跳转 (按住可快速跳转)
▲/▼	向上/向下滚动 (按住可快速滚动)
G 滑块	按住滑块可锁定/解锁所有按键 (-VOL+ 除外)
H RESET	重置
I MIC	麦克风
J 耳机插孔	耳机插孔

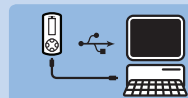
1 安装

- 1 将产品随附的 CD 插入到电脑光驱中。
- 2 按照屏幕上的说明完成 Windows Media Player 和 Philips 设备管理器的安装。

2 连接和充电

A 连接至电脑

将播放机连接至电脑时, 它会自动充电。



- 1 首次使用播放机之前, 应至少充电 5 小时。
> 4 小时后, 电池 100% 充满, 2 小时后, 充满 80%。
- 2 将随附的 USB 电缆连接至播放机底部的迷你 USB 端口, 另一端连接至电脑。
> 连接至电脑后, 播放机将开始充电。

B 查看播放机的电池电量指示

播放机的大致电量如下所示:



注意: 当电池电量差不多耗尽时, 电量低的画面将闪烁。播放机将保存所有设置和未完成的录音, 并在 60 秒之内关机。

3 传输

使用 Windows Media Player 11 传输音乐和图片

下载 Windows Media Player 11:
<http://www.microsoft.com/windows/windowsmedia/player/11/default.aspx>



- 1 启动 Windows Media Player 11。
- 2 使用随附的 USB 电缆将播放机连接至电脑。
- 3 连接播放机后, 同步选项卡将变为如 () 中所示, 并且该设备及其内容在 Windows Media Player 11 中可见 (请参见上图)。
- 4 Windows Media Player 11 会自动将音乐媒体库中的内容同步到您的播放机。

请参阅用户手册, 了解有关如何设置 Windows Media Player 11 中的同步选项的详细信息。

4 欣赏

A 开机和播放

要开机, 请按 ▶, 直到显示屏显示 Philips 徽标为止。
要关机, 请按住 ▶, 直到显示屏显示 "bye" (再见) 为止。

提示: 如果播放机处于空闲状态且 10 分钟没有按任何按键, 它将自动关闭。

B 主菜单

🎵 音乐	播放数字音乐曲目
📻 收音机*	收听 FM 收音机
🎧 录音	创建或收听录音
📁 文件夹视图	查看文件夹中的文件
⚙️ 设置	自定义播放机的设置

C 导航菜单

播放机具有一个直观的菜单导航系统, 可引导您完成各种设置和操作。

目标	操作
返回上一级菜单	按 ↶
返回主菜单	按住 ↶
浏览菜单	按 ▶ 或 ↶
滚动查看列表	按 ▲ 或 ▼
选择一个选项	按 ▶

音乐模式 (以及录音的播放模式)

播放机提供以下音乐模式选项:

目标	操作	目标	操作
播放/暂停音乐	按 ▶	快退	按住 ⏮
跳至下一个音频文件	按 ▶	返回浏览菜单	按 ↶ 键
返回上一个音频文件	按 ⏮	增大音量	按 Vol +
快进	按住 ▶	减小音量	按 Vol -

收音机*

从主菜单中, 选择 📻 进入收音机模式。

连接耳机

提供的耳机可用作收音机天线。请确保正确连接耳机, 以获得最佳接收效果。

自动调谐

- 1 从收音机菜单 📻 中, 选择自动调谐。
> 收音机将自动调谐电台, 并将频率保存到预设电台。收音机最多可储存 20 个预设电台。

播放预设电台

- 1 从收音机菜单 📻 中, 选择预设电台。
- 2 按 ▲/▼ 选择预设电台, 按 ▶ 开始播放。
- 3 按 ⏮ 更改为其它预设电台。
- 4 要微调频率, 请快按 ▲/▼。
- 5 要搜索下一个较强的信号, 请长按 ▲/▼。
要退出收音机模式, 请长按 ↶。

录音

您可用此播放机录制音频。

录音

- 1 在所有屏幕 (收音机屏幕除外) 中长按 REC。



> 播放机将开始播放并显示录音屏幕。

- 2 按 ▶ 暂停。
- 3 按 ↶ 停止并保存录音。
> 您的录音内容将保存在播放机中。(文件名格式: VOICEXXX.WAV, 其中 XXX 是自动生成的录音编号。)
- 4 在 🎧 > 语音下可找到此文件。

提示: 按 ▶ 可随时暂停并重新开始录音。

播放录音

从主菜单中, 选择 🎧 > 语音。

- 1 选择您想听的录音。
- 2 按 ▶ 确认。

故障种类和处理方法

如何重置我的播放机?

将一根小针或其它尖锐物体插入到播放机底部的重置孔中。按住不放, 直到播放机关机为止。

如果上述方法无效, 则必须使用设备管理器来恢复播放机:

- 1 在电脑上, 通过 开始 > 程序 > Philips Digital Audio Player (Philips 数字音乐播放机) > SA44XX > Philips SA44XX Device Manager (Philips SA44XX 设备管理器) 来启动 Philips 设备管理器。
- 2 播放机连接至电脑时, 按住 VOL+ 按键。
- 3 继续按住该按键, 直到 Philips 设备管理器识别出您的播放机并进入恢复模式。
- 4 单击 "Repair" (修复) 按钮, 并遵循设备管理器给出的说明。
- 5 修复播放机后, 将其从电脑中断开连接并重新启动。

需要帮助?

用户手册 请参阅播放机随附的用户手册。

在线 访问 www.philips.com/welcome

旧产品的处理

本产品是采用优质的材料与元件设计和制造的, 可以回收利用。如果产品上贴有叉线有轮垃圾箱符号, 则说明该产品符合欧洲指令 2002/96/EC

请熟悉当地针对电子和电器产品制订的分门别类的收集机制。请遵循当地的规章制度, 不要将旧产品与一般的生活垃圾一同弃置。正确弃置旧产品有助于避免对环境 and 人类健康造成潜在的负面影响。内置可充电电池含有可污染环境的物质。在丢弃该设备之前, 务必将其交给官方收集点以取出电池。电池应在官方的收集点进行处理。

* 只有某些地区可使用此功能。