

Register your product and get support at  
[www.philips.com/welcome](http://www.philips.com/welcome)

PhotoFrame  
SPF4612



EN User Manual  
ZH-CN 用户手册

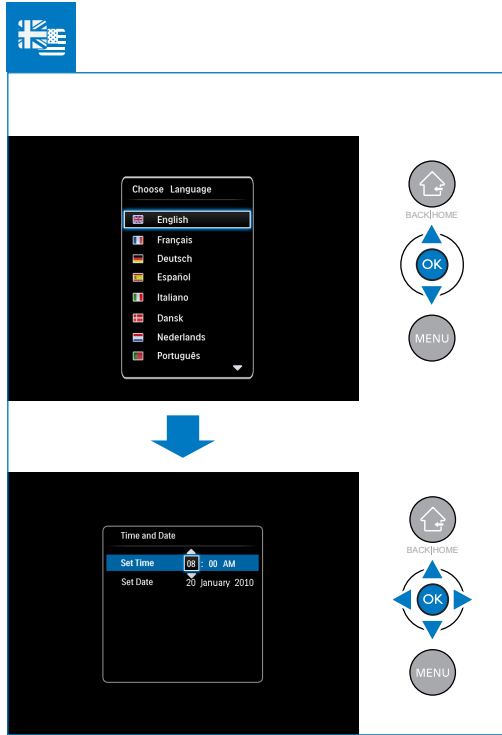
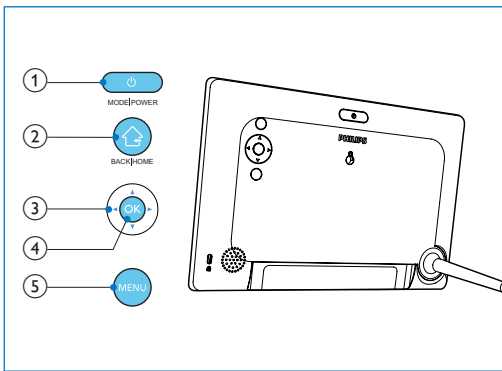
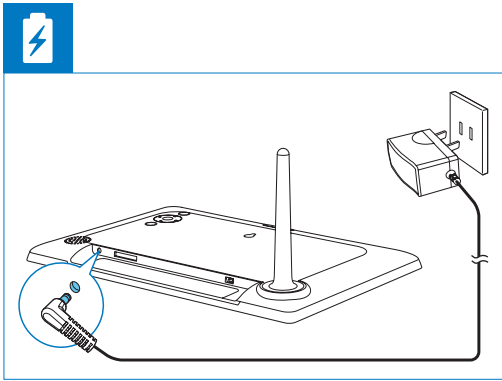
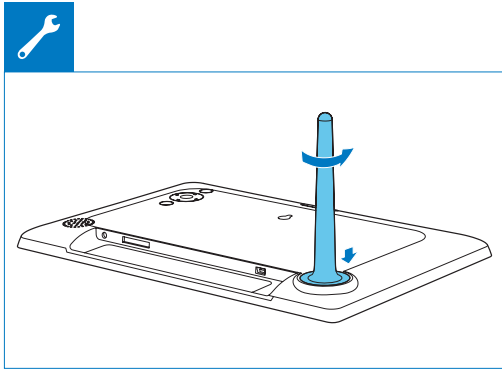
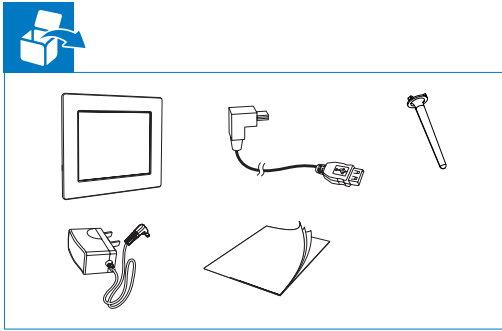
PHILIPS



© 2011 Koninklijke Philips Electronics N.V.  
All rights reserved.

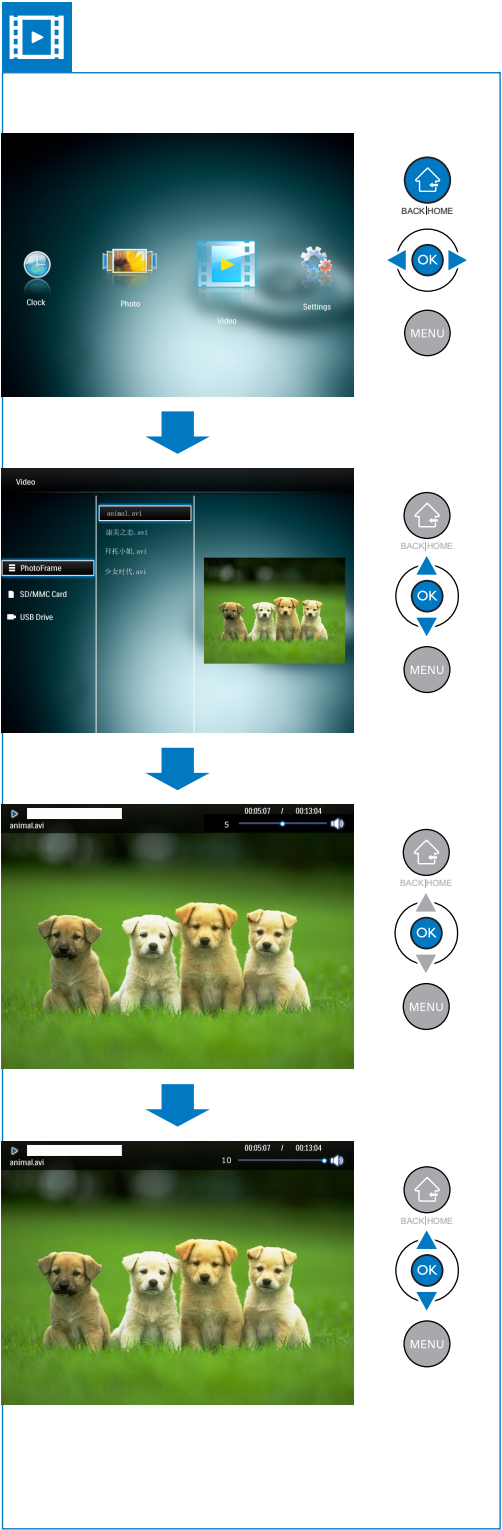
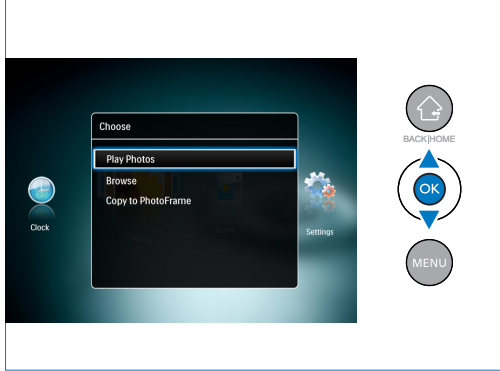
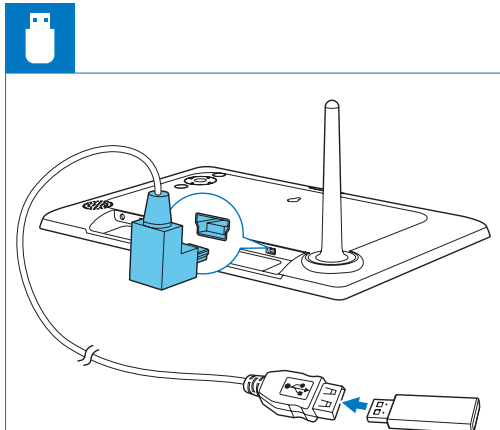
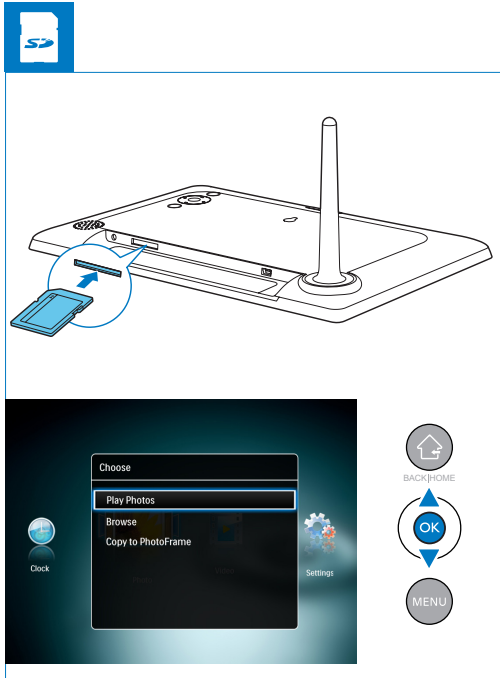
Specifications are subject to change without notice. Trademarks are the property of Koninklijke Philips Electronics N.V. or their respective owners.

UM\_V1.1

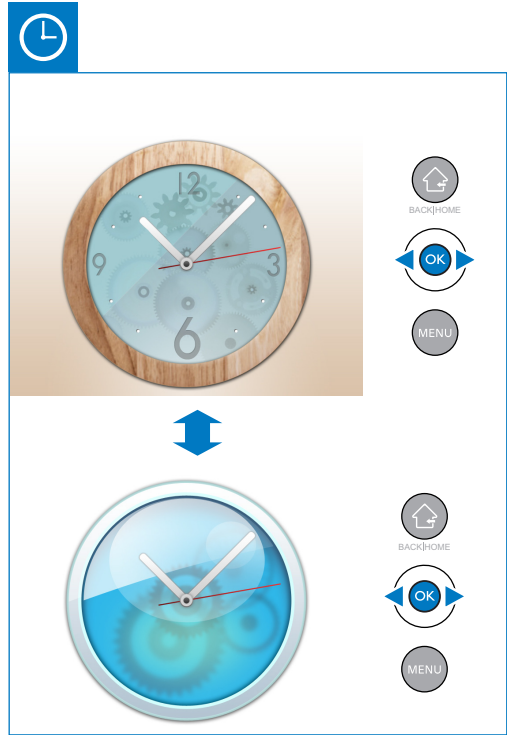


- EN
- 1 Press to switch mode: slideshow/clock/calendar  
Hold to turn on/off the PhotoFrame
  - 2 Press to go back  
Hold to go to the home screen
  - 3 Press to select the upper/lower/right/left option
  - 4 Press to confirm a selection  
Press to pause or resume play
  - 5 Press to enter/exit a menu

- ZH-CN
- 1 按下以切换模式：幻灯片/时钟/日历  
按住以打开/关闭数码相框
  - 2 按下以返回  
按住以进入主屏幕
  - 3 按下以选择上面/下面/左边/右边的选项
  - 4 按下以确认选择  
按下以暂停或继续播放
  - 5 按下以进入/退出菜单





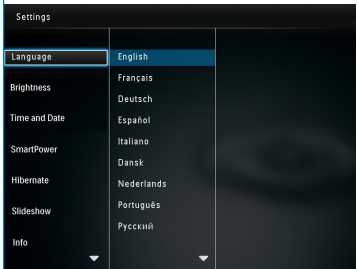
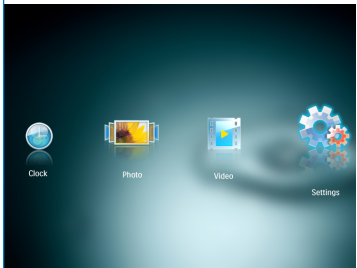


EN

## Safety

### Safety precautions and maintenance

- Never touch, push, rub or strike the screen with hard objects as this may damage the screen permanently.
- When the product is not used for long periods, unplug it.
- Before you clean the screen, turn off and unplug the power cord. Only clean the screen with a soft, water-damp cloth. Never use substances such as alcohol, chemicals or household cleaners to clean the product.
- Never place the product near naked flames or other heat sources, including direct sunlight.
- Never expose the product to rain or water. Never place liquid containers, such as vases, near the product.
- Never drop the product. When you drop the product, it will be damaged.
- Ensure that you install and use services or software only from trustworthy sources free of virus or harmful software.
- This product is designed for indoor use only.
- Only use the supplied power adaptor for the product.



- The socket-outlet shall be installed near the equipment and shall be easily accessible.

## Notice

This product is in compliance with the essential requirements and other relevant provisions of Directives 2006/95/EC (Low Voltage), 2004/108/EC (EMC).

### Respect copyrights

The making of unauthorized copies of copy-protected material, including computer programs, files, broadcasts and sound recordings, may be an infringement of copyrights and constitute a criminal offence. This equipment should not be used for such purposes.

### End of life disposal

- Your new product contains materials that can be recycled and reused. Specialized companies can recycle your product to increase the amount of reusable materials and to minimize the amount to be disposed of.
- Please find out about the local regulations on how to dispose your old monitor from your local Philips dealer.
- (For customers in Canada and U.S.A.) Dispose the old product in accordance to local-state and federal regulations.



For additional information on recycling contact [www.eia.org](http://www.eia.org) (Consumer Education Initiative).

### Recycling Information for Customers

Philips establishes technically and economically viable objectives to optimize the environmental performance of the organization's product, service and activities. From the planning, design and production stages, Philips emphasizes the importance of making products that can easily be recycled. At Philips, end-of-life management primarily entails participation in national take-back initiatives and recycling programs whenever possible, preferably in cooperation with competitors. There is currently a system of recycling up and running in the European countries, such as The Netherlands, Belgium, Norway, Sweden and Denmark. In U.S.A., Philips Consumer Lifestyle North America has contributed funds for the Electronic Industries Alliance (EIA) Electronics Recycling Project and state recycling initiatives for end-of-life electronics products from household sources. In addition, the Northeast Recycling Council (NERC) - a multi-state non-profit organization focused on promoting recycling market development - plans to implement a recycling program. In Asia Pacific, Taiwan, the products can be taken back by Environment Protection Administration (EPA) to follow the IT product recycling management process, detail can be found in web site [www.epa.gov.tw](http://www.epa.gov.tw).

### Environmental information

Your product is designed and manufactured with high quality materials and components, which can be recycled and reused. When you see the crossed-out wheel bin symbol attached to a product, it means the product is covered by the European Directive 2002/96/EC: Never dispose of your product with other household waste. Please inform yourself about the local rules on the separate collection of electrical and electronic products. The correct disposal of your old product helps prevent potentially negative consequences on the environment and human health.



### Banned Substance Declaration

This product complies with RoHS.

## ZH-CN

## 安全

### 安全注意事项与维护

- 切勿用硬物接触、推按、摩擦或敲击屏幕，否则可能造成永久性的损坏。
- 若打算长期不用本产品，请拔下电源插头。
- 清洁屏幕之前，请关闭电源并拔下电源线。仅用柔软的湿布清洁屏幕。切勿使用酒精、化学品或家用清洁剂等物质来清洁本产品。
- 切勿将本产品放置在靠近明火或其它热源的地方，包括阳光直射处。
- 切勿让本产品与雨或水接触。切勿将液体容器（如花瓶）置于产品旁边。
- 切勿让本产品跌落。跌落产品会造成损坏。
- 务必仅从不含病毒或有害软件的可靠来源安装和使用服务或软件。
- 根据设计，本产品只能在室内使用。
- 只能对本产品使用随附的电源适配器。
- 电源插座应安装在设备附近，并应能够轻松插接。

## 公告

本产品符合指令 2006/95/EC (低电压)、2004/108/EC (EMC) 的基本要求及其它相关规定。

### 尊重版权

进行受版权保护材料 (包括计算机程序、文件、广播和录音) 的未授权复制可能会侵犯版权并构成犯罪。不得将此设备用于这些目的。



### 废旧产品弃置

- 这款新产品包含可回收利用的材料。 专业公司可回收本产品，以增加可循环使用的材料，并将废弃的材料减至最少。
- 请就如何处理购自当地 Philips 经销商的、已变旧的显示器，了解当地的规章制度。
- (面向加拿大和美国客户) 根据本州和联邦规章制度处理旧产品。

更多关于回收的信息，请访问 [www.eia.org](http://www.eia.org) (消费者教育计划)。

### 针对客户的回收信息

Philips 设立了在技术和经济上可行的目标，以优化公司产品、服务和活动的环保效果。从规划、设计阶段到生产阶段，Philips 一直强调制造易回收产品的重要性。 Philips 的废弃管理会尽可能参与全国回收活动和计划，而且最好与竞争对手合作。目前，有一个回收机制已在荷兰、比利时、挪威、瑞典和丹麦等欧洲国家运行。在美国，北美 Philips 优质生活已捐献资金，用于电子工业联盟 (EIA) 电子回收计划以及针对家用废弃电子产品的州级回收活动。 此外，侧重于促进回收市场发展 的多州联合非盈利组织东北回收委员会 (NERC) 也打算实施回收计划。在亚太地区的中国台湾，“环保总局”(EPA) 可遵循 IT 产品回收管理流程收回这些产品，详细信息可在网站 [www.epa.gov.tw](http://www.epa.gov.tw) 上找到。

### 环境信息

本产品采用可回收利用的高性能材料和组件制造而成。如果产品上贴有带叉的轮式垃圾桶符号，则表示此产品符合欧盟指令 2002/96/EC：切勿将本产品与其它生活垃圾一起处理。请自行了解当地关于分类收集电子和电气产品的规定。正确弃置旧产品有助于避免对环境 and 人类健康造成潜在的负面影响。



### 禁用物质声明

本产品符合 RoHS 要求。



For detailed instructions for use, please visit [www.philips.com/support](http://www.philips.com/support).

详细使用说明，请访问 [www.philips.com/support](http://www.philips.com/support)。

### Power

- Power mode supported: AC powered
- Efficiency level: V
- Average consumption (system on): 5 W
- Power adaptor:
  - Model number: ASSA11-090100
  - Input: AC 100-240V ~ 50-60Hz 0.3A
  - Output : DC 9 V  $\equiv$  1000mA

### 电源

- 支持电源模式: 交流电源
- 效率级别: V
- 平均能耗 (系统开启): 5 瓦
- 电源适配器:
  - 型号: ASSA11-090100
  - 输入: 100-240V ~ 50/60Hz 0.3A
  - 输出: 9 V  $\equiv$  1000mA

### Picture 图片

File Type 文件类型	Sub Type 子类	Max Pixels 最大像素
JPG JPEG	Baseline 标准式	8000 × 8000
	Progressive 渐进式	1024 × 600
BMP	-	> 64 × 64

### Video 视频

File Type 文件类型	Video Code 视频编码	Resolution 分辨率	Bit Rate 比特率	Frame Rate 帧频	Audio 音频			Remarks 备注
					Codec 编码	Bit Rate 比特率	Sampling Rate 采样率	
AVI	MPEG-4 (Part2) H.264 M-JPEG	1080P	20 Mbps	30 fps	PCM	128-536 kbps	8-48 kHz	Divx,Xvid,VC1 not included 不支持 DivX, Xvid 和 VC1
					ADPCM	32-384 kbps		
					AAC	8-256 kbps		
TS/MTS	H.264	1080P	20 Mbps	30 fps	LPCM	192-448 kbps	48/96 kHz	-
					AAC	8-256 kbps	8-48 kHz	-
MOV MP4	MPEG-4 H.264	1080P	20 Mbps	30 fps	PCM	128-536 kbps		
					ADPCM	32-384 kbps		



部件名称 Name of the Parts	有毒有害物质或元素 Hazardous/toxic Substance					
	铅 (Pb, Lead)	汞 (Hg, Mercury)	镉 (Cd, cadmium)	六价铬 (Chromium 6+)	多溴联苯 (PBB)	多溴二苯醚 (PBDE)
Housing 外壳	O	O	O	O	O	O
LCD Panel 液晶面板	X	X	O	O	O	O
PWBs 电路板组件	X	O	O	O	O	O
Accessories (Remote control & cables) 附件 (遥控器, 电源线, 连接线)	X	O	O	O	O	O

O: 表示该有毒有害物质在该部件所有均质材料中的含量均在SJ/T11363 - 2006 标准规定的限量要求以下。  
O: Indicates that this toxic or hazardous substance contained in all of the homogeneous materials for this part is below the limit requirement in SJ/T11363 - 2006.

X: 表示该有毒有害物质至少在该部件的某一均质材料中的含量超出SJ/T11363 - 2006 标准规定的限量要求。  
X: Indicates that this toxic or hazardous substance contained in at least one of the homogeneous materials used for this part is above the limit requirement in SJ/T11363 - 2006.



环保使用期限 Environmental Protection Use Period

此标识指期限 (10年)，电子信息产品中含有的有毒有害物质或元素在正常使用的条件下不会发生外泄或突变，电子信息产品用户使用该电子信息产品不会对环境造成严重污染或对其人身、财产造成严重 损害的期限。

This logo refers to the period ( 10 years ) during which the toxic or hazardous substances or elements contained in electronic information products will not leak or mutate so that the use of these [substances or elements] will not result in any severe environmental pollution, any bodily injury or damage to any assets.