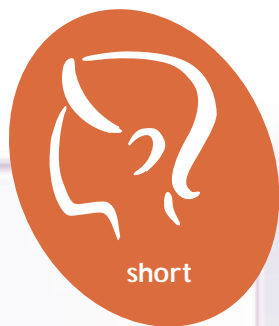


PHILIPS

HP 4630

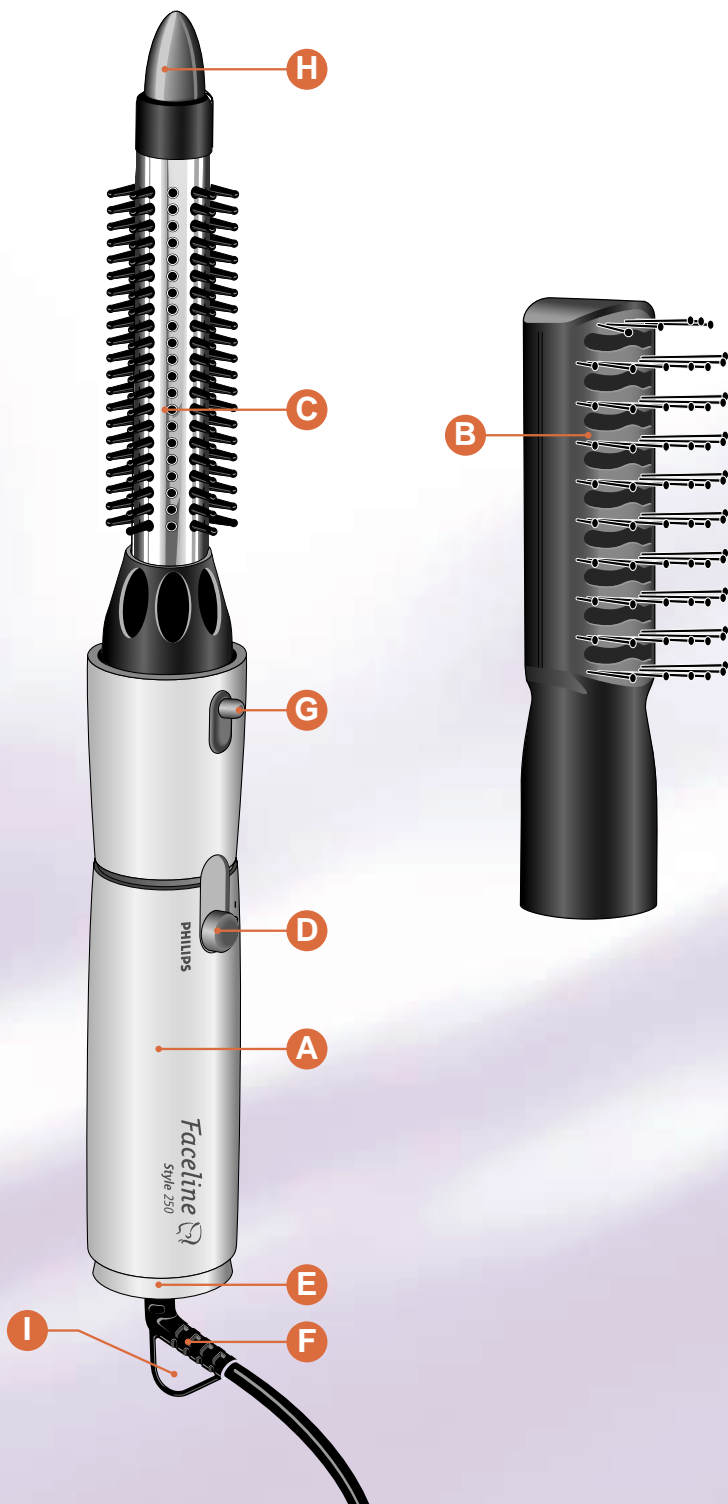


faceline style



PHILIPS

1



English

Your new Philips Profile Style has been specially designed to give beautiful styling results. It is quick and easy to use. We hope you will enjoy using your Profile Style - the hairstyler with which you can create almost any desired hairdo.

In order to get the best results, please read the instructions carefully before use. Also refer to the illustrations on fold-out pages.

Important



- Before connecting the appliance, check that the voltage indicated on the type plate corresponds to the local mains voltage.
- Do not use this product near water in e.g. baths, washbasins, sinks.
If the product falls into water, unplug it immediately and dispose of it. It must not be used again.
- Always ensure that the attachments are completely dry (on the inside as well as the outside!) before affixing them to the styler.
- Always switch the appliance off before putting it down, even if it is only for a moment.
- For additional protection, the installation of a residual current device (RCD) with a rated residual operating current not exceeding 30 mA is advisable in the electric circuit supplying the bathroom. Ask your electrician for advice.
- Even when the appliance is switched off, the electricity has not been cut off. Always pull out the mains plug when the appliance is not being used.
- Never obstruct the air inlet grille.
- This product is equipped with an automatic overheating protection device. If the appliance overheats, it will switch off. Unplug the appliance. After cooling down for a few minutes, the appliance can be used again. Before switching back on again, check the air inlet grille for possible blockage by fluff, hair, etc. If in doubt, consult your dealer or an Authorised Philips Service Centre.
- Check the condition of the mains cord regularly. Do not wind the mains cord around the appliance.
- The mains cord of this appliance cannot be replaced. If the cord is damaged, the appliance should be discarded.
- For examination or repairs always return the appliance to an Authorised Philips Service Centre. Unqualified repair work can be dangerous for the user.

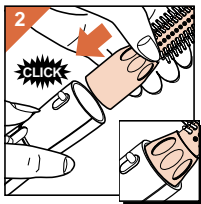
General description (fig. 1)

- A Hairstyler**
- B Shape Brush**
- C Retractable Bristle Brush with metal bar**
- D Switch**
 - 0** = Off
 - I** = Warm air flow for easy styling
- E Air inlet grille**
- F Swivel cord**
- G Release button** for detaching attachments
- H Bristle retraction knob** (to retract or push out the bristles)
- I Hanging loop**

- Before styling, brush or comb your hair to ensure that it is untangled.
- Prevent the hair from becoming too dry. Overdrying may result in frizzy hair ends which are hard to style.
- The results you can obtain with the Profile Style depend upon various factors, for example the thickness, length and structure of your hair. Experimenting with the attachments will allow you to discover the styling possibilities for your particular hair type and will help you determine how to achieve the best results.
- Always switch the appliance off before removing and/or affixing the attachments.

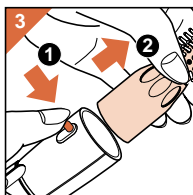
To affix an attachment:

- Align the attachment with the styler, making sure the arrows on the attachment are in line with the arrows on the styler. Press to fit (fig. 2).



To remove an attachment:

- While pressing the release button, pull the attachment in the direction of the arrow (fig. 3).



How to use

- Remember, a good haircut is the basis for a good hairstyle.
- The Profile Style is most effective when the hair is slightly damp. After washing, dry your hair in the normal way until it is damp. Then begin using your styler. When the hair is dry, slightly dampen it with water.

Attachments

• Shape Brush

The Shape Brush is suitable especially for straight or wavy short hair. Its special design with vented hollow center ensures that the warm air is directed directly into your hairdo. The bobble-tipped pins provide good grip on the hair. The heated air from the front of the brush ensures optimum styling and "volume". For a longer lasting result you can apply some mousse before styling your hair.

Volume

- Insert the Shape Brush into the hair. Brush against the direction of the hair growth, touching the scalp with the brush. Then rotate the attachment away from the head (fig. 4). The hair will be lifted and fall lightly back onto the head. In this manner you add maximum volume and body to the hair.
- If the hair is still damp you can hold the Shape Brush still for a moment, before you rotate it away from the head to remove it.
- You can also add volume to long hair by holding your head down and brushing the hair with the Styler in this position.

Shaping and Styling

Making waves in short to medium hair

- Switch on the appliance. Insert the Shape Brush into the hair (fig. 5) and wind the brush in the hair in the desired direction (fig. 6). The resulting shape of the wave depends on the direction you turn the brush.
- As soon as the hair is warm to the touch, remove the hot air brush from the hair by rotating it away from the head.
- Leave the curls or waves to cool down, before finishing by combing, brushing or fingercombing the hair into its final style (fig. 7).
- Of course the Shape Brush is also very suitable to curl your hair in or outwards.

• Retractable Bristle Brush

Making curls in short to medium hair

- Divide the hair into locks (fig. 8) , using a comb. Do not take too much hair in one lock.
- Switch on the appliance. Wind the hair around the brush in the desired direction (fig. 9). Ensure that the hair is wound up so that it is at right angles to the scalp (fig. 10). This will give your hair optimum lift and volume (fig. 11). As soon as the hair is warm to the touch, retract the bristles and remove the brush from the hair sideways.

Making waves in long hair

- Switch on the appliance. Take the ends of the hair and wind them around the brush in the desired direction (fig. 12). The resulting shape of the wave depends on the thickness of the lock.
- As soon as the hair is warm to the touch, retract the bristles and remove the hot air brush from the hair.
- Leave the curls or waves to cool down, before finishing by combing, brushing or fingercombing the hair into its final style (fig. 13).

To remove the brush from the hair

• Retractable Bristle Brush

- It is not necessary to rotate the brush in the opposite direction. Simply push and turn the bristle retraction knob in the direction of the arrows (fig. 14) and the bristles will retract.
- Slide the metal bar sideways out of the curl. This will prevent the curl from getting spoilt or tangled and makes it last longer.

Cleaning

The brushes can be cleaned with a small brush or a dry cloth.

Storage

The appliance can be hung from the hanging loop (fig. 15).

