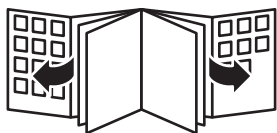


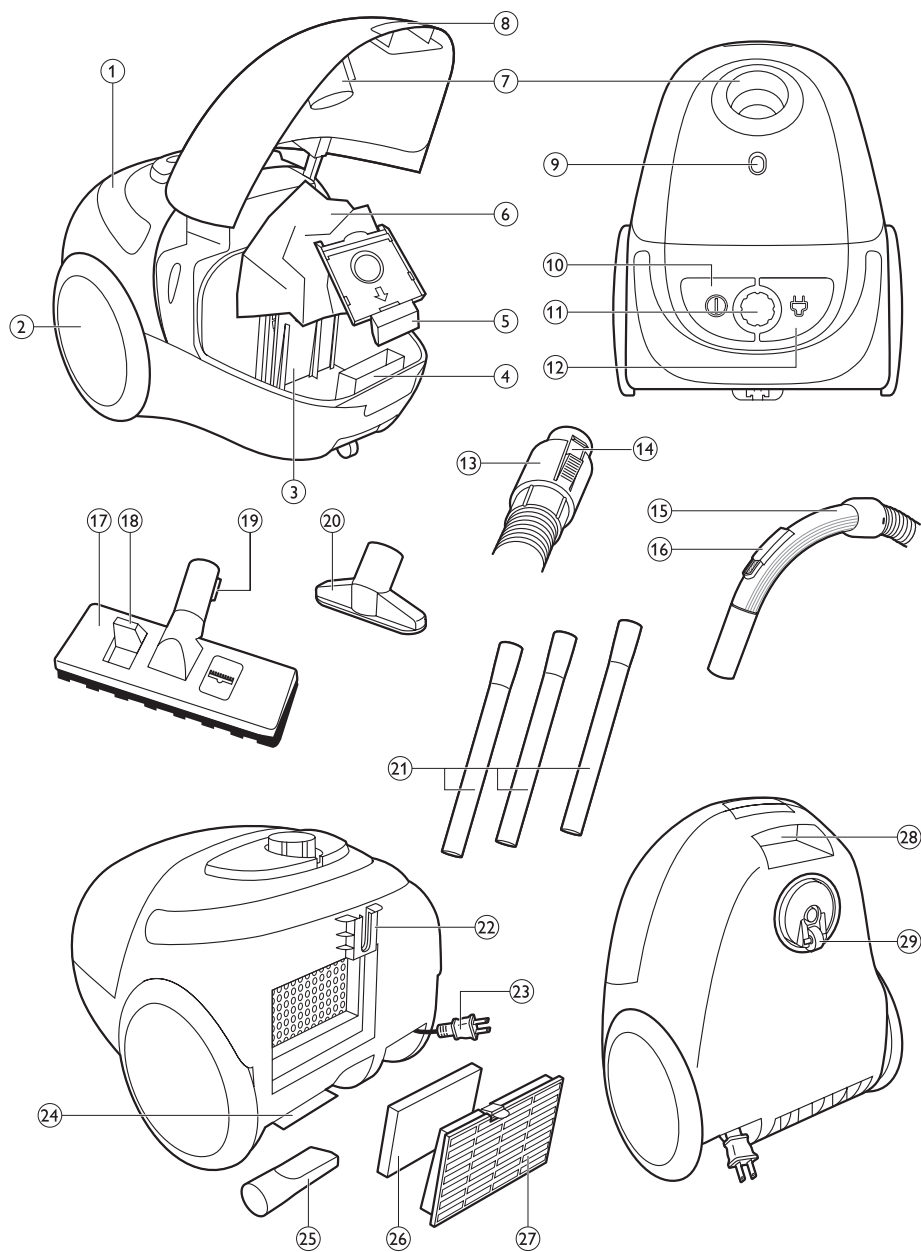
Register your product and get support at  
[www.philips.com/welcome](http://www.philips.com/welcome)

FC8089, FC8088



**PHILIPS**









## Introduction

Congratulations on your purchase and welcome to Philips! To fully benefit from the support that Philips offers, register your product at [www.philips.com/welcome](http://www.philips.com/welcome).

## General description (Fig. 1)

- 1 Carrying handle
- 2 Rear wheel
- 3 Motor protection filter
- 4 Dustbag holder
- 5 Dustbag holder fixation tab
- 6 Reusable dustbag
- 7 Hose connection opening
- 8 Release tab to open dustbag compartment
- 9 Dustbag-full indicator
- 10 On/off button
- 11 Electronic suction power control (FC8089 only)
- 12 Cord rewind button
- 13 Hose connector
- 14 Hose button
- 15 Handgrip
- 16 Suction power slide
- 17 Combination nozzle
- 18 Rocker switch
- 19 Storage/parking ridge
- 20 Small nozzle (FC8089 only)
- 21 3 tube parts
- 22 Parking slot
- 23 Mains cord with plug
- 24 Crevice tool holder
- 25 Crevice tool
- 26 Exhaust filter
- 27 Filter grille
- 28 Carrying grip
- 29 Swivel wheel

## Important

Read this user manual carefully before you use the appliance and save it for future reference.

### Danger

- Never suck up water or any other liquid. Never suck up flammable substances and do not suck up ashes until they are cold.

### Warning

- Check if the voltage indicated on the appliance corresponds to the local mains voltage before you connect the appliance.
- Do not use the appliance if the plug, the mains cord or the appliance itself is damaged.
- If the mains cord is damaged, you must have it replaced by Philips, a service centre authorised by Philips or similarly qualified persons in order to avoid a hazard.
- This appliance is not intended for use by persons (including children) with reduced physical, sensory or mental capabilities, or lack of experience and knowledge, unless they have been given supervision or instruction concerning use of the appliance by a person responsible for their safety.

- Children should be supervised to ensure that they do not play with the appliance.
- Do not point the hose, the tube or any other accessory at the eyes or ears nor put it in your mouth when it is connected to the vacuum cleaner and the vacuum cleaner is switched on.

### Caution

- When you use the vacuum cleaner to vacuum ashes, fine sand, lime, cement dust and similar substances, the pores of the dustbag become clogged. As a result, the dustbag-full indicator will indicate that the dustbag is full. Empty the reusable dustbag, even if it is not full yet (see chapter 'Emptying the reusable dustbag').
- Never use the appliance without the motor protection filter. This damages the motor and shortens the life of the appliance.
- Do not suck up large objects as this may cause the air passage in the tube or hose to become obstructed.
- Only use the reusable dustbag that is supplied with the appliance. If you use another dustbag, this could lead to motor damage or shorten the lifetime of the appliance.

### Electromagnetic fields (EMF)

- This Philips appliance complies with all standards regarding electromagnetic fields (EMF). If handled properly and according to the instructions in this user manual, the appliance is safe to use based on scientific evidence available today.

## Preparing for use

### Hose

- 1 To connect the hose, press the two hose buttons (1) and push the hose into the opening (2) ('click') (Fig. 2).
- 2 To disconnect the hose, press the two hose buttons again (1) and pull the hose out of the appliance (2) ('click') (Fig. 3).

### Tube

- 1 To connect the tube parts to each other, insert the narrow section into the wider section and turn it a little. (Fig. 4)
- 2 To connect the tube to the handgrip of the hose, insert the handgrip into the tube and turn it a little (Fig. 5).
  - To disconnect the tube or tube parts, pull and turn a little.
  - Connect and disconnect the accessories in the same way.

### Combination nozzle

The combination nozzle enables you to clean the floor efficiently. You can use the combination nozzle on carpet with the brush strips folded in or on hard floors (for instance for tiled, parqueted, laminated and linoleumed flooring) with the brush strips folded out.

- 1 To connect the combination nozzle to the tube, insert the tube into the combination nozzle and turn it a little (Fig. 6).
- 2 Push the rocker switch on top of the combination nozzle with your foot to make the brush strip for cleaning hard floors come out of the nozzle housing (Fig. 7).
- 3 Push the rocker switch on the other side to make the brush strip disappear into the nozzle housing (Fig. 8).

### Crevice tool

- You can use the crevice tool to clean hard-to-reach places quickly and conveniently.
- You find the crevice tool in the crevice tool compartment of the appliance. (Fig. 9)
- You can connect the crevice tool to the tube or directly to the handgrip of the hose.

**1** To connect the crevice tool, insert the tube or handgrip while turning it a little.

### Small nozzle (FC8089)

- You can use the small nozzle to clean small areas, e.g. the seats of chairs and sofas (Fig. 10).
- You can connect the small nozzle to the tube or directly to the handgrip of the hose.

**1** To connect the small nozzle, insert the tube or handgrip while turning it a little.

## Using the appliance

### Vacuuming

**1** Pull the mains cord out of the appliance and put the plug in the wall socket.

**2** Press the on/off button on top of the appliance with your foot to switch on the appliance (Fig. 11).

### Adjusting suction power

During vacuum cleaning, you can adjust the suction power with:

- the slide on the handgrip of the hose, or (Fig. 12)
- the electronic suction power control on the vacuum cleaner (FC8089 only) (Fig. 13).

*Note: Use maximum suction power to vacuum very dirty carpets and hard floors. Use minimum suction power to vacuum curtains, tablecloths etc.*

### Parking the tube

- If you want to pause for a moment, insert the ridge on the combination nozzle into the parking slot to park the tube in a convenient position (Fig. 14).

### Storage

**1** Switch off the appliance and remove the mains plug from the wall socket.

**2** Press the cord rewind button to rewind the mains cord (Fig. 15).

**3** After use, store the crevice tool in its holder (Fig. 9).

**4** Insert the ridge on the combination nozzle into the parking slot (Fig. 14).

### Emptying the reusable dustbag

Always unplug the appliance before you open the cover of the dustbag compartment to empty the reusable dustbag.

*Note: Only use the reusable dustbag that is supplied with the appliance. If you use another dustbag, this could lead to motor damage or shorten the lifetime of the appliance.*

- Empty the dustbag as soon as the dustbag-full indicator remains yellow, also when the nozzle is not placed on the floor (Fig. 16).

**1** Place your fingers under the release tab (1) and open the cover of the dustbag compartment (2) (Fig. 17).

**2** Lift the dustbag holder with the dustbag out of the dustbag compartment (Fig. 18).



- 3** Slide the front of the dustbag out of the dustbag holder (Fig. 19).
- 4** Hold the dustbag over a dustbin and slide the clip off the dustbag sideways to empty the dustbag (Fig. 20).
- 5** To close the dustbag, slide the clip back onto the bottom edge of the dustbag (Fig. 21).
- 6** Slide the front of the empty dustbag into the two grooves of the dustbag holder as far as possible. (Fig. 22)
- 7** Place the dustbag holder fixation tab between the two ridges inside the dustbag compartment (Fig. 23).

*Note: Make sure the arrow on the dustbag front points downwards.*

- 8** Push the dustbag holder down until the dustbag holder fixation tab locks in position.

*Note: The appliance does not work if the dustbag is not placed properly.*

- 9** Close the cover of the dustbag compartment (Fig. 24).

*Note: You cannot close the cover of the dustbag compartment if the dustbag holder with the reusable dustbag has not been inserted.*

*Tip: If you want to clean the reusable dustbag thoroughly, you can clean it in water. Make sure you let the dustbag dry completely before you place it back into the appliance.*

## Cleaning the filters

### Exhaust filter

Clean the exhaust filter every three months.

- 1** Pull at the grip on the filter grille (1) and remove the filter grille from the appliance (2) (Fig. 25).
- 2** Take out the exhaust filter. Shake the dirt out of the filter over a dustbin (Fig. 26).

*Tip: To clean the exhaust filter thoroughly, you can also clean it in water. Make sure you let the filter dry completely before you place it back into the appliance.*

- 3** Put back the exhaust filter (Fig. 27).
- 4** To reattach the filter grille to the vacuum cleaner, align the two ridges of the grille with the two slots on the vacuum cleaner and close the grille ('click') (Fig. 28).

### Motor protection filter

Never use the appliance without the motor protection filter. This damages the motor and shortens the life of the appliance.

Clean the motor protection filter every time you clean the reusable dustbag.

- 1** Take the motor protection filter out of the appliance.
- 2** Clean the filter by shaking the dirt out of it over a dustbin.

*Tip: To clean the motor protection filter thoroughly, you can also clean it in water. Make sure you let the filter dry completely before you place it back into the appliance.*

Replacement

Replace the reusable dustbag if it can no longer be cleaned properly. Reuseable dustbags are available under service number 4322 004 93641.  
Only use the reusable dustbag that is supplied with the appliance.

Environment

- Do not throw away the appliance with the normal household waste at the end of its life, but hand it in at an official collection point for recycling. By doing this, you help to preserve the environment (Fig. 29).

Guarantee and service

If you need service or information or if you have a problem, please visit the Philips website at [www.philips.com](http://www.philips.com) or contact the Philips Consumer Care Centre in your country. You find its phone number in the worldwide guarantee leaflet. If there is no Consumer Care Centre in your country, go to your local Philips dealer.

Troubleshooting

Problem	Possible cause	Solution
The suction power is insufficient.	The suction power slide on the handgrip is open.	Close the suction power slide on the handgrip.
	FC8089 only: The electronic suction power control is set to a low setting.	Set the electronic suction power control to a higher setting.
	The dustbag is full.	Empty the reusable dustbag.
	The motor protection filter and/or the exhaust filter is dirty.	Shake these filters over a dustbin to clean them.
	The nozzle, tube or hose is blocked up.	To remove the obstruction, disconnect the blocked-up item and connect it (as far as possible) the other way around. Switch on the vacuum cleaner to suck the obstruction out of the blocked-up item.

## 简介

感谢您的惠顾，欢迎光临飞利浦！为了您能充分享受飞利浦提供的支持，请在 [www.philips.com/welcome](http://www.philips.com/welcome) 上注册您的产品。

## 一般说明 (图 1)

- 1 手柄
- 2 后轮
- 3 马达保护滤网
- 4 集尘袋固定架
- 5 集尘袋固定架固定钮
- 6 循环使用集尘袋
- 7 软管连接孔
- 8 集尘袋仓的打开钮
- 9 尘满指示灯
- 10 开/关按钮
- 11 电子吸力调控钮（仅限于 FC8089）
- 12 电源线自动回卷按钮
- 13 软管接口
- 14 软管按钮
- 15 手柄
- 16 吸力控制滑块
- 17 两用吸嘴
- 18 转换开关
- 19 存放/放置夹片
- 20 小号吸嘴（仅限于 FC8089）
- 21 3 个管件
- 22 摆放固定槽
- 23 带插头的电源线
- 24 缝隙吸嘴支架
- 25 缝隙吸嘴
- 26 排风滤网
- 27 滤网栅格
- 28 握把
- 29 滚轮

## 注意事项

使用本产品之前，请仔细阅读本使用说明书，并妥善保管以备日后参考。

### 危险

- 切勿吸入水或其它液体。切勿吸入易燃物质，也不要吸入未冷却的灰烬。

### 警告

- 在将产品连接电源之前，请先检查产品所标电压与当地的供电电压是否相符。
- 如果插头、电源线或产品本身受损，请勿使用本产品。
- 如果电源线损坏，为了避免危险，必须由制造商、其维修部或类似部门的专业人员来更换。
- 本产品不打算由肢体不健全、感觉或精神上有障碍或缺乏相关经验和知识的人（包括儿童）使用，除非有负责他们安全的人对他们使用本产品进行监督或指导。
- 应照看好儿童，确保他们不玩耍本产品。

## 12 简体中文

- 当连接到真空吸尘器并且真空吸尘器已开始工作时，请勿将软管、硬管或任何其它附件指向眼睛或耳朵，也不要放在口中。

### 注意

- 在使用真空吸尘器吸收灰尘、细沙、石灰、水泥灰和类似的物质时，集尘袋的袋孔可能发生阻塞。因此，尘满指示灯将显示集尘袋已满。此时，请清空可循环使用集尘袋，即使集尘袋并未装满（见“清空可循环使用集尘袋”一章）。
- 切勿在未安装马达保护滤网的情况下使用本产品。这将使马达受损，并缩短产品的使用寿命。
- 切勿吸取体积较大的脏物，否则可能阻塞硬管或软管中的空气通道。
- 只能使用本产品随附的可循环使用集尘袋。如果您使用其他集尘袋，可能会导致马达损坏或缩短产品的寿命。

### 电磁场 (EMF)

- 这款飞利浦产品符合关于电磁场 (EMF) 的相关标准。据目前的科学证明，如果正确使用并按照本用户手册中的说明进行操作，本产品是安全的。

## 使用准备

### 软管

- 1 要连接软管，按下两个软管按钮 (1) 并将软管推入开口处 (2) (可听到“咔哒”一声)。(图 2)
- 2 要断开软管连接，请再次按下两个软管按钮 (1) 并将软管从产品拉出 (2) (可听到“咔哒”一声)。(图 3)

### 硬管

- 1 要将硬管的两端相互连接，请将较窄部分插入较宽部分，同时稍加旋转。(图 4)
  - 2 要将硬管与软管的手柄连接起来，请将手柄插入硬管中并稍微转动。(图 5)
- 要断开硬管或硬管两端，请向外拉并且稍微转一下。
  - 以同样的方式连接和拆下附件。

### 两用吸嘴

您可以通过两用吸嘴高效地清洁地板。刷条折起时可对地毯使用两用吸嘴，刷条伸出时可对硬质地板（例如瓷砖地板、木地板、层压地板和油毡地板）使用两用吸嘴。

- 1 要将两用吸嘴连接到硬管，请将硬管插入两用吸嘴并稍微转动。(图 6)
- 2 用脚推两用吸嘴顶部的转换开关，使用于清洁硬质地板的刷条从吸嘴中伸出。(图 7)
- 3 按下另一端的转换开关，使刷条缩回吸嘴中。(图 8)

### 缝隙吸嘴

- 您可以使用缝隙吸嘴快速方便地清洁难以触及的区域。
- 缝隙吸嘴可在产品的缝隙吸嘴储藏格中找到。(图 9)
- 您可以将缝隙吸嘴连接到硬管，或直接连接到软管的手柄。

- 1 要连接缝隙吸嘴，请插入硬管或手柄并稍加旋转。

### 小号吸嘴 (FC8089)

- 您可使用小号吸嘴清洁较小的区域，例如椅子和沙发的座位。(图 10)
- 您可以将小号吸嘴连接到硬管，或直接连接到软管的手柄。

- 1 要连接小号吸嘴，请插入硬管或手柄并稍加旋转。

## 使用本产品

### 吸尘

- 1 将电源线从吸尘器中拉出，并将电源插头插入插座。
- 2 用脚按下产品顶部的开/关按钮，打开产品电源。(图 11)

### 调节吸力大小

吸尘过程中，可用以下部件来调整吸力：

- 软管手柄上的滑块，或 (图 12)
- 吸尘器上的电子吸力调控钮（仅限于 FC8089）。(图 13)

注意：对于特别脏的地毯和硬地板，可用最大吸力吸尘。清洁门帘、台布或其他物品时，可用最小吸力。

### 放置硬管

- 如要暂时使用吸尘器，可通过将组合吸嘴上的夹片插入摆放固定槽以将硬管放妥。(图 14)

## 存储

- 1 关闭产品的电源，从插座中拔下电源插头。
- 2 按下电源线回卷按钮将电线回卷到吸尘器中。(图 15)
- 3 使用后，将缝隙吸嘴放回支架中。(图 9)
- 4 将两用吸嘴上的夹片插入摆放固定槽。(图 14)

## 倒空可循环使用集尘袋

在打开集尘袋仓的盖子来倒空可循环使用集尘袋之前，务必先拔掉产品的电源插头。

注意：只能使用本产品随附的可循环使用集尘袋。如果您使用其他集尘袋，可能会导致马达损坏或缩短产品的寿命。

- 在尘满指示灯保持亮黄光时（以及在吸嘴没有紧贴地板的情况下），请立即倒空集尘袋。(图 16)

- 1 将手指放在打开钮下 (1)，打开集尘袋仓的盖子 (2)。(图 17)
- 2 将带有集尘袋的集尘袋固定架从集尘袋仓中提出。(图 18)
- 3 将集尘袋前端滑出集尘袋固定架。(图 19)
- 4 将集尘袋拿到垃圾箱上方，将密封夹从集尘袋侧边滑下以倒空集尘袋。(图 20)
- 5 将密封夹滑回集尘袋的底边，封闭集尘袋。(图 21)
- 6 将空集尘袋的前端尽量滑入集尘袋固定架的两个槽中。(图 22)
- 7 将集尘袋固定架固定钮放在集尘袋仓中的两个夹片之间。(图 23)

注意：确保集尘袋前端上的箭头朝下。

- 8 向下推集尘袋固定架，直至集尘袋固定架固定钮锁定到位。

注意：如果集尘袋没有正确放置，则产品将无法工作。

## 14 简体中文

### 9 盖上集尘袋仓的盖子。(图 24)

注意： 如果没有插入带可循环使用集尘袋的集尘袋固定架，则无法盖上集尘袋仓的盖子。

提示： 如果您要彻底清洁可循环使用集尘袋，则可在水中进行清洁。在将集尘袋装回产品之前，确保使其完全干燥。

## 清洁过滤网

### 排风滤网

每三个月清洁一次排风滤网。

**1** 拉动滤网栅格上的把手 (1) 并将滤网栅格从产品上取下 (2)。(图 25)

**2** 取出排风滤网。在垃圾箱上方将滤网上的脏物抖掉。(图 26)

提示： 要彻底清洁排风滤网，您还可以在水中清洁。将滤网装回产品之前，确保使其完全干燥。

**3** 放回排风滤网。(图 27)

**4** 要将滤网栅格装回吸尘器，请将栅格的两条肋筋对准吸尘器上的两个槽口，闭合栅格（“咔哒”一声）。(图 28)

### 马达保护滤网

切勿在未安装马达保护滤网的情况下使用本产品。这将使马达受损，并缩短产品的使用寿命。

每次清洁可循环使用集尘袋时，都应清洁马达保护滤网。

**1** 从产品中取出马达保护滤网。

**2** 在垃圾箱上方将滤网上的脏物抖掉。

提示： 要彻底清洁马达保护滤网，您还可以在水中清洁。将滤网装回产品之前，确保使其完全干燥。

## 更换

如果无法再正常清洁可循环使用集尘袋，请加以更换。可循环使用集尘袋的订购号码为 4322 004 93641。

只能使用本产品随附的可循环使用集尘袋。

## 环保


- 弃置产品时，请不要将其与一般生活垃圾堆放在一起；应将其交给官方指定的回收中心。这样做有利于环保。(图 29)

## 保修与服务

如果您需要服务或更多信息，或者有任何疑问，请访问飞利浦网站：[www.philips.com](http://www.philips.com)。您也可与您所在国家/地区的飞利浦客户服务中心联系（可从全球保修卡中找到其电话号码）。如果您所在的国家/地区没有飞利浦客户服务中心，请与当地的飞利浦经销商联系。

## 故障种类和解决方法

问题	可能的原因	解决方法
吸力不足。	握把上的吸力控制滑块已打开。	关闭握把上的吸力滑块。
	仅限于 FC8089: 电子吸力调控钮被设置在较低的档位。	将吸力调控钮设置在更高的档位。
	集尘袋已满。	倒空可循环使用集尘袋。
	马达保护滤网和/或排风滤网过滤网已经很脏。	在垃圾箱上方晃动这些滤网，以抖掉脏物。
	吸嘴、硬管或软管阻塞。	要清除阻塞物，请将被阻塞的部分拆下，并将它以相反方向连接（尽可能离的远一些）。打开吸尘器电源，将阻塞物从被阻塞部件中吸出。



**产品** : 飞利浦家用  
真空卧式吸尘器

**型号** : FC8088

**额定电压** : 220V~

**额定频率** : 50Hz


**额定输入功率**: 1000 W

**生产日期** : 请见产品底部

**产地** : 中国

珠海经济特区飞利浦家庭电器有限公司  
中国珠海市三灶镇琴石工业区  
邮政编码: 519040  
全国顾客服务热线: 4008 800 008

本产品根据国标 GB4706.1-2005, GB4706.7-2004, GB4343.1-2009及GB17625.1-2003制造



**产品** : 飞利浦家用  
真空卧式吸尘器

**型号** : FC8089

**额定电压** : 220V~

**额定频率** : 50Hz

**额定输入功率**: 1000 W

**生产日期** : 请见产品底部

**产地** : 中国

珠海经济特区飞利浦家庭电器有限公司  
中国珠海市三灶镇琴石工业区  
邮政编码: 519040  
全国顾客服务热线: 4008 800 008

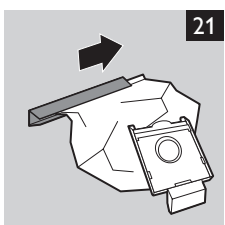
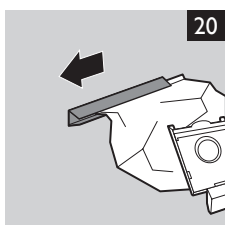
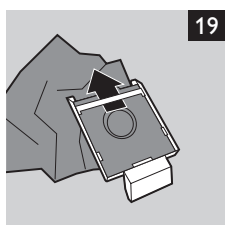
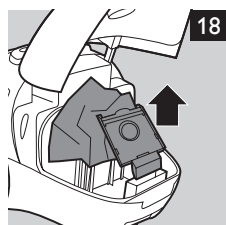
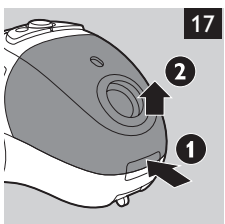
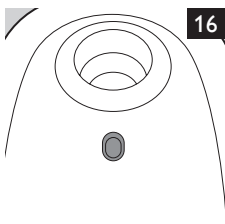
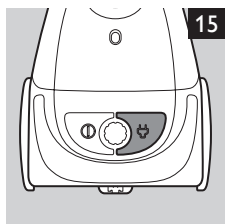
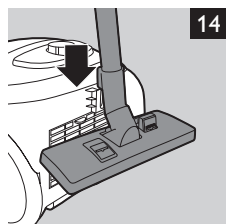
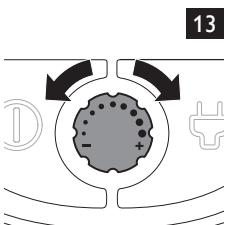
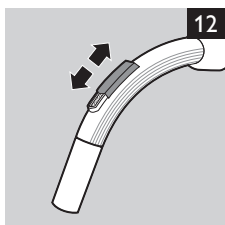
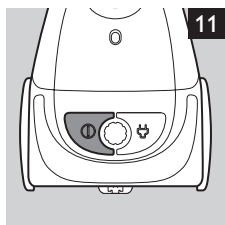
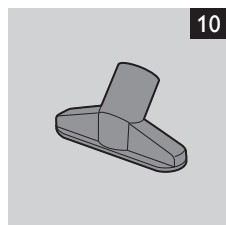
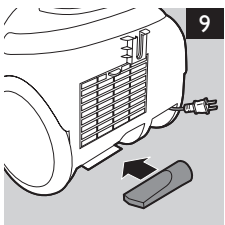
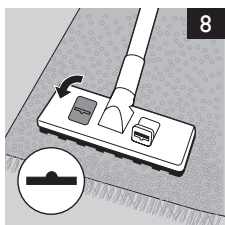
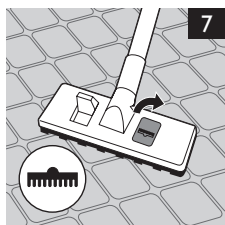
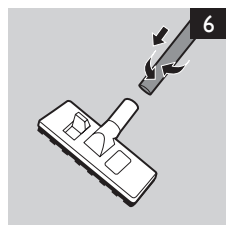
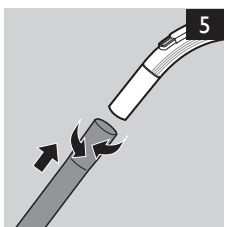
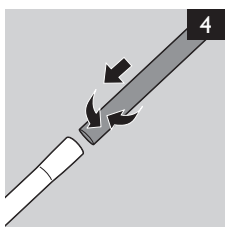
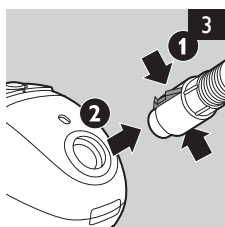
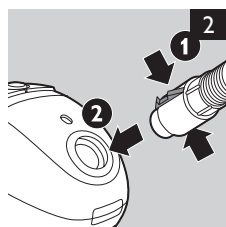
本产品根据国标 GB4706.1-2005, GB4706.7-2004, GB4343.1-2009及GB17625.1-2003制造

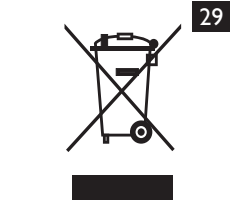
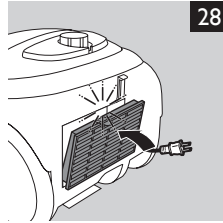
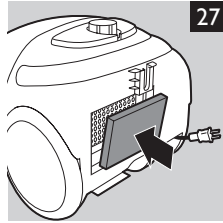
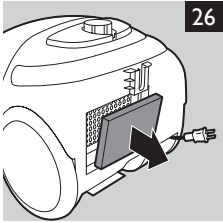
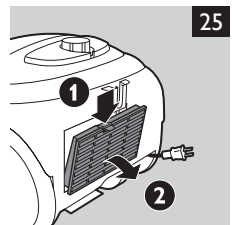
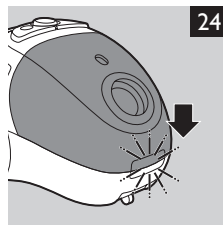
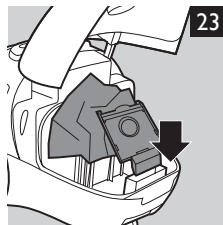
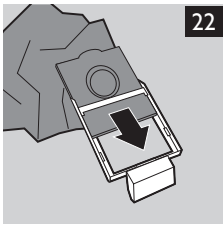
请妥善保管本使用说明书  
发行日期：1/11/2011

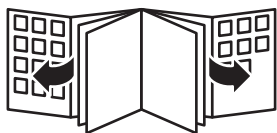
请妥善保管本使用说明书  
发行日期：1/11/2011













[www.philips.com](http://www.philips.com)



100% recycled paper  
100% papier recyclé  
100% 循环再造纸

4222.003.3580.1