

Morphy Richards products are intended for household use only.

Morphy Richards has a policy of continuous improvement in product quality and design. The company, therefore reserves the right to change the specification of its models at any time.

morphy richards®

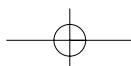
The After Sales Division
Morphy Richards Ltd
Mexborough, South Yorkshire,
England, S64 8AJ

Helpline (office hours)
UK 0870 060 2615
Republic of Ireland 1800 409119

RN42288 Rev 1 10/06

For details of other products in the Morphy Richards range please see our website . . .

www.morphyrichards.com



morphy richards®



Jet Stream 'Elite' and 'Elite+' ironing system



Please read and keep these instructions

Getting the best from your new ironing system....

Safety first

Caution must be used when handling this appliance as it does get very hot. Always switch off the unit and allow to cool before cleaning or storing.

Water tank

The water tank can be re-filled at any time during ironing.

Performance

To extend the performance and life of your jet stream generator ensure that you replace the anti-scale cartridge regularly.



For replacement parts, help with using your Morphy Richards product, problems and lots more; contact us by phone or through our website.

RN42288 Rev 1



UK Helpline: 0870 060 2615
Replacement parts: 0870 167 6646
Ireland 1800 409119

www.morphyrichards.com

IMPORTANT SAFETY INSTRUCTIONS

The use of any electrical appliance requires, the use of common sense and strict following of safety rules.

Primarily there is danger of injury or death and secondly the danger of damage to the appliance. These are indicated in the text by the following two conventions:

WARNING: Danger to the person!

IMPORTANT: Damage to the appliance! In addition we offer the following safety advice.

Location

- Do not use outdoors.

Children

- Close supervision is necessary when any appliance is used near children.

Personal safety

- Burns can occur from touching hot metal parts, hot water or steam. Use caution when using your steam generator. If your iron is placed for a few moments on the iron rest plate, this plate may reach very high temperatures. In this instance, do not touch the iron soleplate or the iron rest plate until the iron and the iron rest have cooled down.
- Do not use the vertical steam feature on clothes that are being worn.
- Do not leave the steam generator unattended whilst plugged in or on an ironing board. Never allow the mains lead to over

hang the work surface.

- The mains socket should always be switched off before plugging or unplugging from the socket. Never yank the cord to disconnect from the socket, instead, grasp the plug and pull to disconnect.

Other safety considerations

- Use the steam generator only for its intended use.
- Never hold the generator base set under the tap.
- To protect against the risk of electric shock do not put the appliance in water or in any other liquid.
- Always disconnect the tank from the base unit when filling with water and emptying.
- Always disconnect the steam generator from the electrical supply when cleaning or when not in use.
- Do not operate the steam generator with a damaged cord or if the iron has been dropped or damaged. To avoid the risk of electric shock, do not disassemble the iron, but telephone Morphy Richards for advice. Incorrect reassembly can cause a risk of electric shock when the iron is used.
- If the need arises to change the mains cable on your steam generator or the iron, please return to Morphy Richards service department at the address on the back page.

Special instructions

- If your steam generator does not work, check the following points:

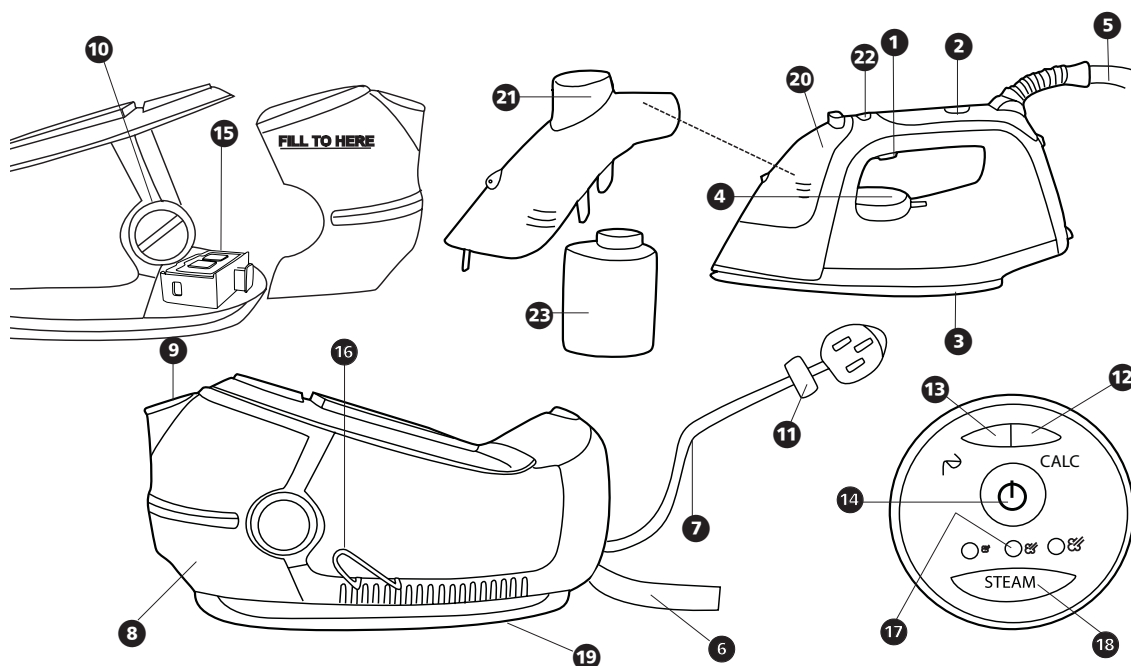
Has the iron temperature control been set to the required temperature? Is the plug in its socket? Is the plug itself or the socket faulty? (Check by plugging in another appliance).

- To prevent damage to the textile being ironed, follow the temperature guide carefully. (Test on the inside of the hem of the garment).
- When ironing is complete, remove the plug from the socket, empty any remaining water from the tank, and allow to cool before storage.
- If you drop or severely knock your steam generator this could cause internal damage even if the outside appears alright. Have it checked by a qualified electrician.
- The temperature of accessible surfaces may be high when the appliance is operating.

WARNING: Do not use the product on a surface which could be damaged by heat or steam such as a worktop or a polish wood Surface.

If in doubt, contact Morphy Richards.

WARNING: This appliance must be earthed



COMPONENTS OF YOUR JETSTREAM 'ELITE+'

Iron unit

- ① Steam trigger
- ② Temperature indicator light
- ③ Soleplate
- ④ Temperature control knob
- ⑤ Supply cord from base unit

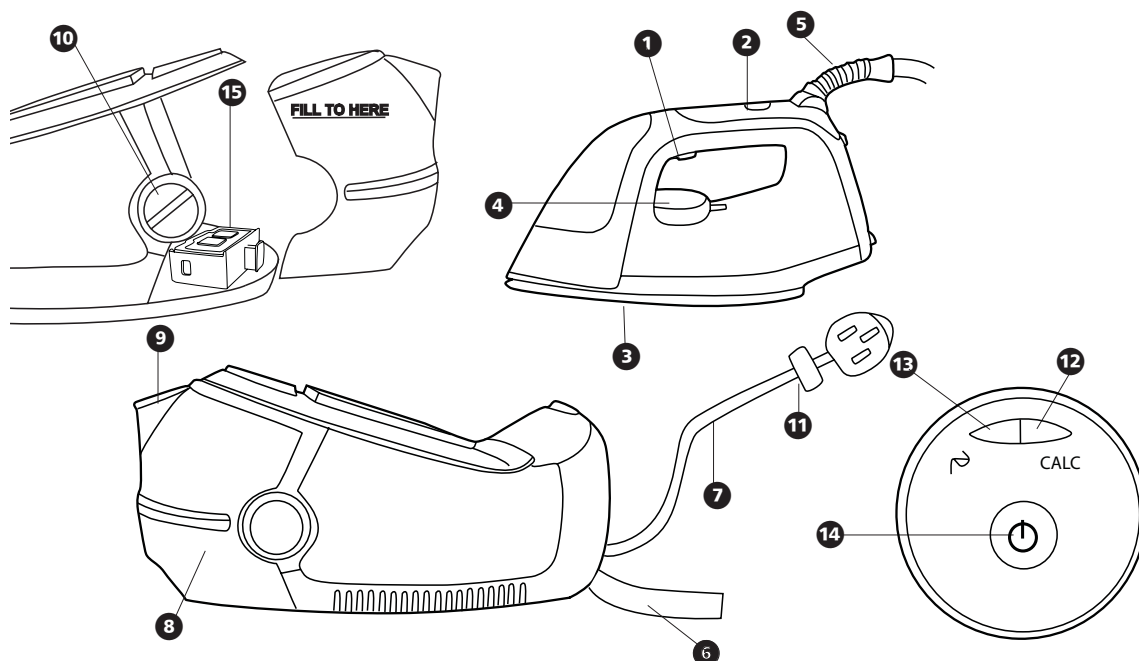
Base unit

- ⑥ Supply cord
- ⑦ Mains cable
- ⑧ Water tank
- ⑨ Water tank filler
- ⑩ Tank release knob
- ⑪ Mains cable clip (storage)
- ⑫ Replace anti-scale cartridge indicator
- ⑬ 'Fill' water tank indicator
- ⑭ ON/OFF, button plus steam ready and auto-shut off indicator

- ⑮ Anti-scale cartridge (behind water tank)
- ⑯ Supply cord storage clip
- ⑰ Steam level indicator lights
- ⑱ Steam level selection button
- ⑲ Mains cable storage

Water spray unit

- ⑳ Spray assembly
- ㉑ Spray button
- ㉒ Spray cover release button
- ㉓ Spray bottle (internal)



COMPONENTS OF YOUR JETSTREAM 'ELITE'

Iron unit

- ① Steam trigger
- ② Temperature indicator light
- ③ Soleplate
- ④ Temperature control knob
- ⑤ Supply cord from base unit

Base unit

- ⑥ Supply cord
- ⑦ Mains cable
- ⑧ Water tank
- ⑨ Water tank filler
- ⑩ Tank release knob
- ⑪ Mains cable clip (storage)
- ⑫ Replace anti-scale cartridge indicator
- ⑬ 'Fill' water tank indicator
- ⑭ ON/OFF, button plus steam ready

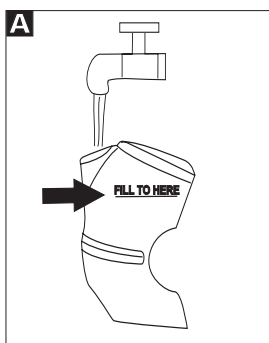
- ⑮ Anti-scale cartridge (behind water tank)

Location

Locate the steam generator horizontally on the rest plate of your ironing board (if large enough) or on a heat resistant stand at the same height of your ironing board or below it. Always ensure the generator is on a firm surface when ironing.

WARNING: Do not use the product on a surface which could be damaged by heat or steam such as a worktop or a polish wood Surface.

If in doubt, contact Morphy Richards.



Before use

Remove any protective sticker from the soleplate and the base unit, if any.

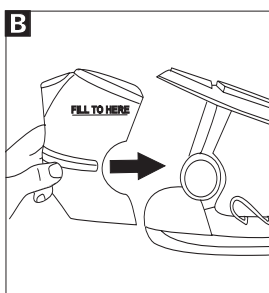
Unwind and straighten the power cord ⑦ and supply cord ⑥.

Slide out the water tank and fill (see filling instructions).

When ironing with the temp set at 2 dot setting, the steam output should be set at the lower end of the steam range.

Textiles and clothes are supposed to carry ironing instructions. If they don't you should follow the fabric guide on page 3, but be sure to test the temperature by ironing the hem of the garment or similar area first.

If you turn the control dial down from a hot setting to a cooler setting, wait until the iron temperature has stabilised before you continue ironing.



FILLING

1 Place the steam generator on a stable ironing board or table, with the iron resting on its stand.

2 Release the detachable water tank by operating the tank release knob ⑩.

3 Slide the tank outwards.

4 Fill the tank to the 'fill to here' line with clean tap water A.

Never use battery topping up fluid or water containing any substances like starch or sugar, or defrosted water from a refrigerator.

5 Re position the water tank on the base unit and push securely into place. Please make sure the tank is secure B.

6 Always pour out any remaining water after use.

Re-filling 'in use'

1 The low water indicator light ⑬ will flash and a beep sound will be heard. This is a warning to stop ironing and fill the tank. Ironing can continue for a short period then the generator will shut down until the tank is refilled.

2 Refilling can be done whilst the appliance is in operation. It is not necessary to wait for the appliance to cool down.

3 Unlock the tank using knob ⑩. Slide out the water tank and fill (see filling instructions).

4 Alternatively you can re-fill the tank in 'situ' through the filler ⑨.

Steam ironing

1 Connect the appliance to a suitable mains outlet. Press the power 'ON' button ⑭ which will glow red.

ALL MODELS

After a few minutes the light changes to green indicating the boiler is ready to generate steam.

Check the iron temperature indicator light ② has switched off indicating the iron is ready to use.

MODEL WITH VARIABLE STEAM 42288

This model automatically selects the middle steam setting as the default setting.

To select a different steam setting, press the temperature ⑮ to select the desired steam level.

2 Turn the temperature dial on the iron in a clockwise direction, select dot-1, dot-2 or dot-3 according to the recommendation of the garment label.

3 The iron's temperature indicator light ② goes off when the required temperature is reached.

- 4 Depress the steam button **1** for 1 minute to clear the system of air (first time use only) which will be accompanied by a clicking noise which is quite normal.
- 5 Begin first time ironing with an old towel. Note: If you press the steam button before the steam generator reaches its required temperature a warning double bleep will sound.
- 6 The appliance is ready to use.
- 7 Press the steam button **1** for steam ironing.
- 8 Depress the power switch to turn off the base unit when ironing is complete.

Dry ironing

- 1 Connect the appliance to a suitable mains outlet.
- 2 **42288 Only.** Press the steam switch **18** 2 times until all three steam level indicator lights go off (steam off mode).
- 3 Turn the temperature dial on the iron in a clockwise direction, select dot-1, dot-2, or dot-3 according to the recommendation of the garment label.
- 4 The temperature indicator light glows on the iron indicating that it is switched on.
- 5 When the required temperature is reached, the temperature indicator light on the iron goes off. The iron is ready to use.

It is always a good idea to begin with 'cool' fabrics and work up to higher settings.

An iron heats up quicker than it cools down so you'll save time and electricity.

Auto-shut off. (42288 only)

An auto-shut off system will activate if the steam is not used for over 15 minutes. The mains indicator light **14** will flash between green and red indicating the unit is in 'sleep mode'.

When this occurs, press the steam select button **18** or the power switch **14** 'ON' once. The appliance will switch on immediately and you need to check, and select the required setting.

ANTI-SCALE SYSTEM

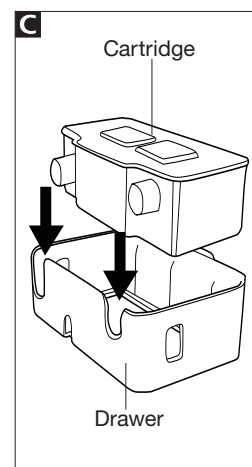
The anti-scale cartridge is designed to reduce the build-up of limescale which occurs during steam ironing, this will prolong the working life of your iron. However, please note that the anti-scale cartridge will not completely stop the natural process of limescale build-up.

When the cartridge needs replacing the indicator light **12** will flash.

NOTE: The unit will not switch off. But you need to replace the cartridge as soon as possible.

Replacing anti-scale medium

- 1 When the indicator light flashes you need to replace the anti-scale cartridge.
- 2 The steam generator needs to be connected to the mains supply.
- 3 Remove the tank from the base unit.
- 4 Remove the anti-scale cartridge which is situated behind the tank, and replace the cartridge making sure the replacement unit is pushed firmly in position.
- 5 Re-position the tank.
- 6 If the cartridge is not fitted correctly the unit will not



function. The 'calc' light will flash accompanied by a beep sound.

Re-fit the cartridge and the unit will operate as intended.

Note: A cartridge should filter 40 litres of hard water.

Replacement anti-scale refills

To obtain replacement anti-scale refills telephone our spares number on: 0870 167 6646.

- 1 If a new re-fill is not available you may continue operating the appliance but scale will build up in the system. Replace the anti-scale refill as soon as possible.

Part Number 01030

Features of your steam generator

Steam function

During the steaming process, small amounts of water may be ejected from the soleplate. This is normal and can be avoided by using the steam for short amounts of time and only when the iron is at the correct temperature (the indicator light on the iron goes out when ready).

Sudden jolts of the boiler unit can also cause water droplets on the soleplate; therefore do not move the base unit during ironing. We recommend for the first time ironing that you iron over an old towel.

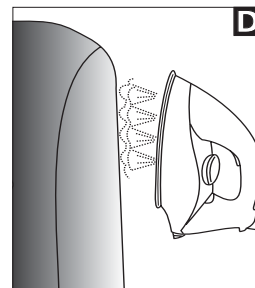
Vertical steam

Hold the iron in a vertical position between 1cm and 2cm away from the item **D**. Press the steam trigger **1**, this will create vertical steam. This feature is especially useful for removing creases from hanging clothes, curtains, wall hanging.

MAINTENANCE

To clean a stainless steel soleplate

To keep the soleplate of your iron clean and free of limescale, we recommend that you use one of the gentle chrome, silver or stainless steel cleaners that are generally available. Always follow the manufacturers instructions. To clean off melted man-made fibres set the iron at 3 dot position and pass it over a clean piece of cotton which will draw the deposit off the surface.



To clean the exterior

Allow the steam generator to cool and wipe over with a damp cloth and mild detergent, then wipe with a dry cloth.

HELPLINE

If you have any difficulty with your appliance, do not hesitate to call us.

We are more likely to be able to help than the store from where you bought it.

Please have the following information ready to enable our staff to deal with your query quickly.

- Name of the product
- Model number as shown on the underside of the appliance.
- Serial number as shown on underside of the appliance.

UK Helpline 0870 0602615

Replacement Parts 0870 1676646

Ireland Helpline 1800 409119

YOUR TWO YEAR GUARANTEE

It is important to retain the retailers receipt as proof of purchase. Staple your receipt to this back cover for future reference.

Please quote the following information if the product develops a fault. These numbers can be found on the base of the product.

Model no.

Serial no.

All Morphy Richards products are individually tested before leaving the factory. In the unlikely event of any appliance proving to be faulty within 28 days of purchase it should be returned to the place of purchase for it to be replaced.

If the fault develops after 28 days and within 24 months of original purchase, you should contact the Helpline number quoting Model number and Serial number on the product, or write to Morphy Richards at the address shown. You may be asked to return a copy of proof of purchase.

Subject to the exclusions set out below (see Exclusions) the faulty appliance will then be repaired or replaced and dispatched usually within 7 working days of receipt.

If for any reason this item is replaced during the 2 year guarantee period, the guarantee on the new item will be calculated from original purchase date. Therefore it is vital to retain your original till receipt or invoice to indicate the date of initial purchase.

To qualify for the 2 year guarantee the appliance must have been used according to the manufacturers instructions. For example kettles should have been regularly descaled.

EXCLUSIONS

Morphy Richards shall not be liable to replace or repair the goods under the terms of the guarantee where:

- 1 The fault has been caused or is attributable to accidental use, misuse, negligent use or used contrary to the manufacturers recommendations or where the fault has been caused by power surges or damage caused in transit.
- 2 The appliance has been used on a voltage supply other than that stamped on the products.
- 3 Repairs have been attempted by persons other than our service staff (or authorised dealer).
- 4 Where the appliance has been used for hire purposes or non domestic use.
- 5 Morphy Richards are not liable to carry out any type of servicing work, under the guarantee.
- 6 Plastic filters for all Morphy Richards kettles and coffee makers are not covered by the guarantee.

This guarantee does not confer any rights other than those expressly set out above and does not cover any claims for consequential loss or damage. This guarantee is offered as an additional benefit and does not affect your statutory rights as a consumer.

- This guarantee is valid in the UK and Ireland only.



For electrical products sold within the European Community. At the end of the electrical products useful life it should not be disposed of with household waste.

Please recycle where facilities exist. Check with your Local Authority or retailer for recycling advice in your country.