



**LG Electronics Inc.**  
<http://www.lgmobile.com>

P/N : MMBB0222701 (1.0) ㉔

| TU500 | USER GUIDE

LG Electronics Inc.



CE 0889

ENGLISH



## | TU500 | USER GUIDE

Some of contents in this manual may differ from your phone depending on the software of the phone or your service provider.

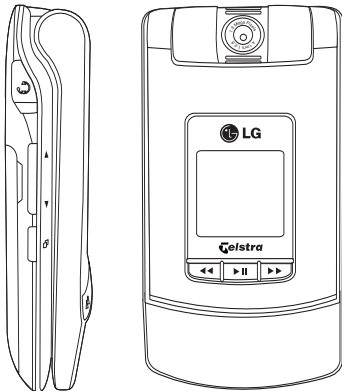
# TU500 USER GUIDE

This document is the user guide for the LG TU500 3G Video Mobile Phone. All rights for this document are reserved by LG Electronics. Copying, modifying and distributing this document without the consent of LG Electronics are prohibited.

## Disposal of your old appliance



1. When this crossed-out wheeled bin symbol is attached to a product it means the product is covered by the European Directive 2002/96/EC.
2. All electrical and electronic products should be disposed of separately from the municipal waste stream via designated collection facilities appointed by the government or the local authorities.
3. The correct disposal of your old appliance will help prevent potential negative consequences for the environment and human health.
4. For more detailed information about disposal of your old appliance, please contact your city office, waste disposal service or the shop where you purchased the product.



# Table of Contents

Guidelines for safe and efficient use	6
---------------------------------------	---

Parts of the phone	12
--------------------	----

Getting started	15
-----------------	----

General functions	26
Making and answering calls	

Main menu	32
-----------	----

Profiles	33
----------	----

Alert type	
Ringtones	
Message Tone	34
Effect tones	
Volume	

My Media	35
----------	----

Images

Videos

Sounds	36
--------	----

Music Player	37
--------------	----

Games & Applications	38
----------------------	----

Bluetooth Data	39
----------------	----

Other Files

Memory Card

Recent Calls	40
Missed Calls	
Received Calls	
Dialled Calls	
All Calls	
Call Duration	41

Messages	42
New Message	
Inbox	47
Email Inbox	
Drafts	49
Outbox	
Sent	50
Voice Mail	
Video Mail	
Templates	
Settings	51

My Place	56
Address Book	57
New Contact	
Contact List	
Speed Dial List	
Caller Groups	
My Numbers	
Settings	58

# Table of Contents

Organiser & Tools	59
Alarm Clock	
Calendar	
Tasks	60
Notepad	61
Calculator	
Unit Converter	62
World Clock	
Stop Watch	
Date Finder	63
D-Day Counter	
Favourites	

Camera	64
Take Photo	
Record Video	65
Record Voice	66
Memory Status	

Settings	67
Profiles (for SAT USIM)	
Date & Time	
Phone Settings	68
Call Settings	69
Connectivity	73
Security	79
Memory Status	81
Handset Information	83
Internet	
Reset settings	86

---

Troubleshooting	87
-----------------	----

---

Accessories	89
-------------	----

# Guidelines for safe and efficient use

Please read these simple guidelines. Not following these guidelines may be dangerous or illegal. Further detailed information is given in this manual.

## Certification information (SAR)

### **THIS DEVICE MEETS INTERNATIONAL GUIDELINES FOR EXPOSURE TO RADIO WAVES**

Your mobile device is a radio transmitter and receiver. It is designed and manufactured not to exceed the limits for exposure to radio frequency (RF) recommended by international guidelines (ICNIRP). These limits are part of comprehensive guidelines and establish permitted levels of RF energy for the general population. The guidelines were developed by independent scientific organizations through periodic and thorough evaluation of scientific studies. The guidelines include a substantial safety margin designed to assure the safety of all persons, regardless of age and health. The exposure standard for mobile devices employs a unit of measurement known as the Specific Absorption Rate, or SAR. The SAR limit stated in the international guidelines is

2.0 W/kg\*. Tests for SAR are conducted using standard operating positions with the device transmitting at its highest certified power level in all tested frequency bands. Although the SAR is determined at the highest certified power level, the actual SAR of the device while operating can be well below the maximum value. This is because the device is designed to operate at multiple power levels so as to use only the power required to reach the network. In general, the closer you are to a base station, the lower the power output of the device. Before a phone model is available for sale to the public, compliance with the European R&TTE directive must be shown. This directive includes as one essential requirement the protection of the health and the safety for the user and any other person. The highest SAR value for this device when tested for use at the ear is 0.805 W/kg. This device meets RF exposure guidelines when used either in the normal use position against the ear or when positioned at least 1.5 cm away from the body. When a carry case, belt clip or holder is used for body-worn operation, it should not contain metal and should position the product at least 1.5 cm away from your body. In order to transmit data files

or messages, this device requires a quality connection to the network. In some cases, transmission of data files or messages may be delayed until such a connection is available.

Ensure the above separation distance instructions are followed until the transmission is completed. The highest SAR value for this device when tested for use at the body is 0.087 W/kg.

\* The SAR limit for mobile devices used by the public is 2.0 watts/kilogram (W/kg) averaged over ten grams of body tissue. The guidelines incorporate a substantial margin of safety to give additional protection for the public and to account for any variations in measurements. SAR values may vary depending on national reporting requirements and the network band. For SAR information in other regions please look under product information at [www.lgmobile.com](http://www.lgmobile.com).

## Product care and maintenance

**WARNING!** *Only use batteries, chargers and accessories approved for use with this particular phone model. The use of any other types may invalidate any approval or warranty applying to the phone, and may be dangerous.*

- ▶ Do not disassemble this unit. Take it to a qualified service technician when repair work is required.
- ▶ Keep away from electrical appliances such as a TV's, radios or personal computers.
- ▶ The unit should be kept away from heat sources such as radiators or cookers.
- ▶ Never place your phone in a microwave oven as it will cause the battery to explode.
- ▶ Do not drop.
- ▶ Do not subject this unit to mechanical vibration or shock.
- ▶ The coating of the phone may be damaged if covered with wrap or vinyl wrapper.
- ▶ Do not use harsh chemicals (such as alcohol, benzene, thinners, etc.) or detergents to clean your phone. There is a risk of this causing a fire.



# Guidelines for safe and efficient use

- ▶ Do not subject this unit to excessive smoke or dust.
- ▶ Do not keep the phone next to credit cards or transport tickets; it can affect the information on the magnetic strips.
- ▶ Do not tap the screen with a sharp object as it may damage the phone.
- ▶ Do not expose the phone to liquid or moisture.
- ▶ Use accessories, such as earphones and headsets, with caution. Ensure that cables are tucked away safely and do not touch the antenna unnecessarily.
- ▶ Please remove the data cable before powering on the handset.

## Efficient phone operation

To enjoy optimum performance with minimum power consumption please:

- ▶ Do not hold the antenna when the phone is in use. If you hold it, it can affect call quality, it may also cause the phone to operate at a higher power level than needed and shorten talk and standby times.

## Electronic devices

All mobile phones may get interference, which could affect performance.

- ▶ Do not use your mobile phone near medical equipment without requesting permission. Avoid placing the phone over pacemakers (i.e. in your breast pocket.)
- ▶ Some hearing aids might be disturbed by mobile phones.
- ▶ Minor interference may affect TVs, radios, PCs, etc.

## Road safety

Check the laws and regulations on the use of mobile phones in the areas when you drive.

- ▶ Do not use a hand-held phone while driving.
- ▶ Give full attention to driving.
- ▶ Use a hands-free kit, if available.
- ▶ Pull off the road and park before making or answering a call if driving conditions so require.

- ▶ RF energy may affect some electronic systems in your motor vehicle such as a car stereo or safety equipment.
- ▶ If your vehicle is equipped with an air bag, do not obstruct it with installed or portable wireless equipment. It can cause serious injury due to improper performance.

If you are listening to music whilst out and about, please ensure that the volume is at a reasonable level so that you are aware of your surroundings. This is particularly imperative when attempting to cross the street.

## Avoid damage to your hearing

Damage to your hearing can occur if you are exposed to loud sound for long periods of time. We therefore recommend that you do not turn on or off the handset close to your ear. We also recommend that music and call volumes are set to a reasonable level.

## Blasting area

Do not use the phone where blasting is in progress. Observe restrictions, and follow any regulations or rules.

## Potentially explosive atmospheres

- ▶ Do not use the phone at a refuelling point. Don't use near fuel or chemicals.
- ▶ Do not transport or store flammable gas, liquid, or explosives in the compartment of your vehicle, which contains your mobile phone and accessories.

## In aircraft

Wireless devices can cause interference in aircraft.

- ▶ Turn off your mobile phone before boarding any aircraft.
- ▶ Do not use it on the ground without crew permission.

# Guidelines for safe and efficient use

## Children

Keep the phone in a safe place out of small children's reach. It includes small parts which if detached may cause a choking hazard.

## Emergency calls

Emergency calls may not be available under all mobile networks. Therefore, you should never depend solely on your mobile phone for emergency calls. Check with your local service provider.

## Battery information and care

- ▶ You do not need to completely discharge the battery before recharging. Unlike other battery systems, there is no memory effect that could compromise the battery's performance.
- ▶ Use only LG batteries and chargers. LG chargers are designed to maximize the battery life.
- ▶ Do not disassemble or short-circuit the battery pack.
- ▶ Keep the metal contacts of the battery pack clean.

- ▶ Replace the battery when it no longer provides acceptable performance. The battery pack may be recharged hundreds of times until it needs replacing.
- ▶ Recharge the battery if it has not been used for a long time to maximize usability.
- ▶ Do not expose the battery charger to direct sunlight or use it in high humidity, such as the bathroom.
- ▶ Do not leave the battery in hot or cold places, this may deteriorate the battery performance.

## Driver Safety Tips

Your wireless telephone gives you the powerful ability to communicate by voice - almost anywhere, anytime. But an important responsibility accompanies the benefits of wireless phones, one that every user must uphold. When driving a car, driving is your first responsibility. When using your wireless phone behind the wheel of a car, practice good common sense and remember the following tips:


- ▶ Use a hands free device. If possible, add an additional layer of convenience and safety to your wireless phone with one of the many hands free accessories available today.
- ▶ Let the person you are speaking with know you are driving; if necessary, suspend the call in heavy traffic or hazardous weather conditions. Rain, sleet, snow, ice and even heavy traffic can be hazardous.
- ▶ Do not take notes or look up phone numbers while driving. Jotting down a “to do” list or flipping through your address book takes attention away from your primary responsibility, driving safely.
- ▶ If possible, place calls when you are not moving or before pulling into traffic. Try to plan calls when you will not be driving.
- ▶ Do not engage in stressful or emotional conversations that may be distracting. Make people you are talking with aware you are driving and suspend conversations that have the potential to divert your attention from the road.
- ▶ Use your wireless phone to call emergency services for yourself or others. Dial 0-0-0 local emergency number in the case of fire, traffic accident or medical emergencies. Remember, it is a free call on your wireless phone!
- ▶ Use your wireless phone to help others in emergencies, if you see an auto accident crime in progress or other serious emergency where lives are in danger, call 0-0-0 to call emergency number, as you would want others to do for you.
- ▶ Call roadside assistance or a special non-emergency wireless assistance number when necessary. If you see a broken down vehicle posing no serious hazard, a broken traffic signal, a minor traffic accident where no one appears injured, or a vehicle you know to be stolen, call roadside assistance or other special non-emergency wireless number.


# Parts of the phone

Front view



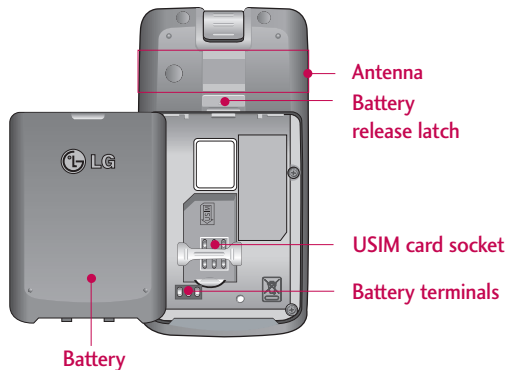
## Music player hot keys

: (Long press) Launches/Stops the music player.  
(Short press) Plays/Pauses the music in the music player.

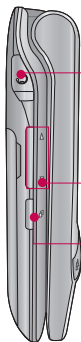
: Previous track/ Rewind

: Next track/ Fast forward

Rear view



## Left side view



Stereo headset connector

### Note

▶ Connect jack to fit the shape of terminal. Otherwise, product can be damaged.

Volume keys

Task menu key

## Task menu key

Multitask simultaneously with voice and data - browse the web, make calls, play games, send and receive messages, and listen to MP3s. All at once.

## When you want to start a new task while a task is running already

For example, to play a MP3 file while you write a message:

1. Press and hold the Task menu key. You can also press the Task key shortly and select the menu by pressing the Left soft key to go to the same screen.
2. Select MP3 Player. The Multitasking icon will appear on the annunciator area.
3. Play a music file you want to listen to.

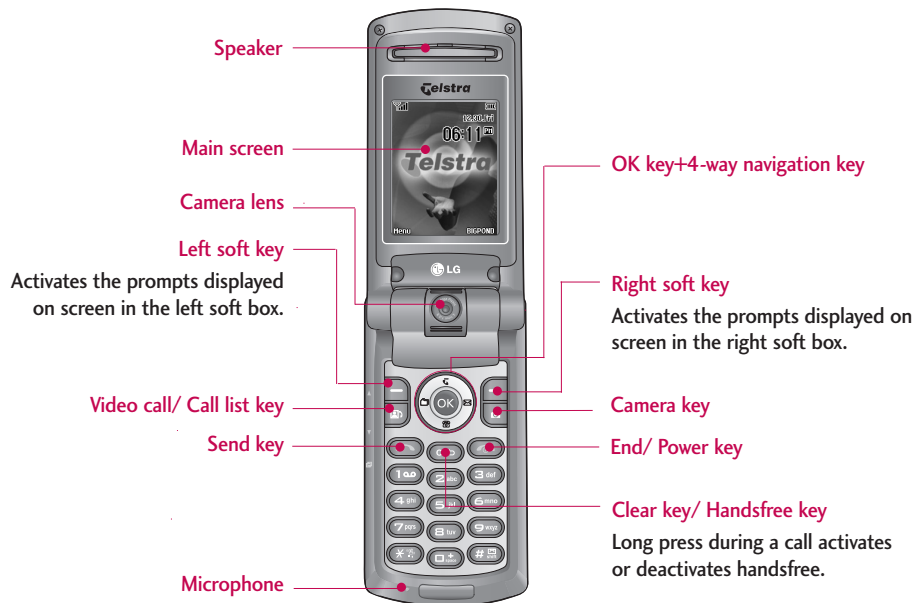
## When you want to identify running tasks and enter the menu for a task among them

For example, to move to Music Player while you write a message:

1. Press the Task menu key.
2. The Task Menu will be displayed.
3. Identify the running tasks using the Right and Left keys.
4. Select the Music Player task from the menu and press OK. You will be moved to the selected task.

# Parts of the phone

## Open view



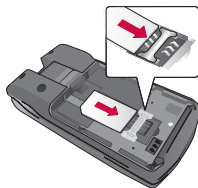
## Installing the USIM card and battery

### 1. Install the USIM card.

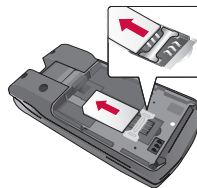
Your USIM card contains your phone number, service details and contacts and must be inserted into your handset.

If your USIM card is removed then your handset becomes unusable (except emergency calls) until a valid USIM is inserted. Always disconnect the charger and other accessories from your handset before inserting and removing your USIM card.

Slide the USIM card into the USIM card holder. Make sure that the USIM card is properly inserted and the gold contact area on the card is facing downwards. To remove the USIM card, press down lightly and pull it in the reverse direction.



To insert the USIM card



To remove the USIM card

### Notice

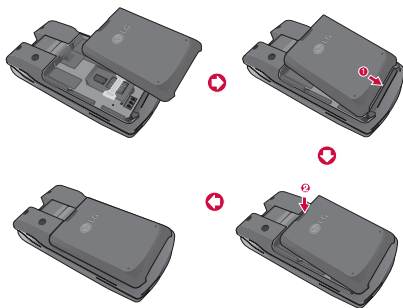
- ▶ Before installing always make sure that the phone is switched off and remove the battery. The metal contact of the USIM card can be easily damaged by scratches. Pay special attention to the USIM card while handling and installing. Follow the instructions supplied with the USIM card.



# Getting started

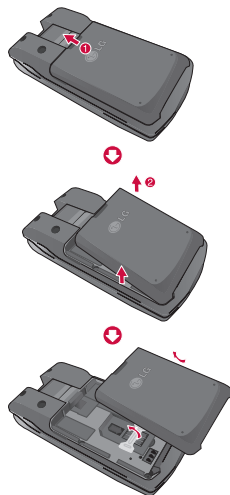
## 2. Install the battery.

Insert the battery aligning the gold contacts on the battery with the battery terminals (gold contacts) in the battery compartment. Then push down the top of the battery until it snaps into space.



## To remove the battery

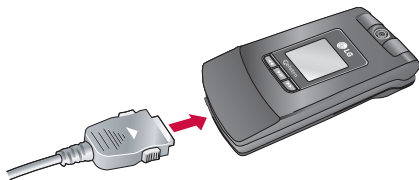
Turn the power off. (If power is left on, there is a chance you could lose the stored telephone numbers and messages.) Press the battery release latches ① and open the battery ②. Then remove the battery.



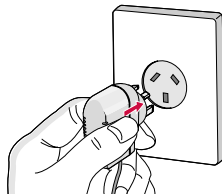
## Charging the battery

To connect the travel adapter to the phone, you must first install the battery.

1. With the arrow facing you as shown in the diagram push the plug on the battery adapter into the socket on the right side of the phone until it clicks into place.



2. Connect the other end of the travel adapter to the mains socket. Use only the charger included in the box.



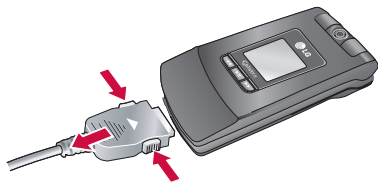
### Warning!

- ▶ Do not force the connector as this may damage the phone and/or the travel adapter.

Please note that the handset can take up to 35 seconds to commence charging if the handset is off when connected to the charger.

## Disconnecting the charger

Disconnect the charger from the phone by pressing the side buttons as shown in the diagram.



### Note

- ▶ Ensure the battery is fully charged before using the phone.
- ▶ Do not remove your battery or the USIM card while charging.
- ▶ The moving bars of the battery icon will stop after charging is complete.
- ▶ If the battery is completely discharged, the charge could take some minutes before starting.

### Note

If the battery does not charge,

- ▶ switch the phone off.
- ▶ ensure the battery is fitted correctly.

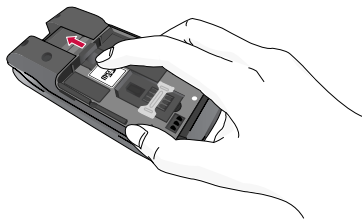
## How to use a microSD memory card



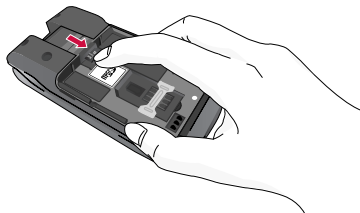
<MicroSD memory card>

### <How to insert a microSD memory card>

1. Power off the phone.
2. Lift the plastic cover which protects the microSD slot.

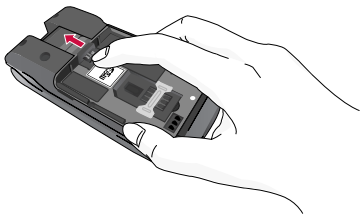


3. Insert the memory card in the slot. The gold contacts must be kept on the back of the microSD. Don't push the microSD too much. If it cannot enter easily in the slot, you may be trying to insert it in the wrong way or there could be a foreign object in the slot.



# Getting started

4. Once inserted, push the memory card until you hear a “click”, meaning that the microSD has been correctly locked.



5. Close the slot plastic protection.
6. To remove the memory card, power off the phone, open the slot protection and push the microSD to unlock it. Carefully extract the memory card.

## Attention:

- ▶ Avoid using the Flash Memory Card when the battery is low.
- ▶ When writing to the card, wait for the operation to complete before removing the card.
- ▶ The card is designed to fit easily into the system one way only.


- ▶ Do not bend the card or force it into the slot.
- ▶ Do not insert any other kind of memory cards different from microSD.

For more information on the microSD, please refer to the instructions manual of the memory card.


## Memory card formatting

Before start using memory card it's necessary to format it. After you insert memory card, select Menu-Settings - Reset settings - Clear memory - Memory Card, then press OK. This operation should be done only when you insert memory card for the first time. During formatting various folders will be created for different data types.

## Turning your handset on

Ensure that your USIM card is in your handset and the battery is charged. Press and hold the  key until power is on. Enter the USIM PIN code that was supplied with your USIM card if PIN code setting is on. After a few seconds you will be registered on the network.

## Turning your handset off

Press and hold the  key until power is off. There may be a few seconds delay while the handset powers down.

Do not re-power the handset during this time.

## Access codes

You can use the access codes described in this section to avoid unauthorized use of your phone. The access codes (except PUK and PUK2 codes) can be changed by using the Change codes feature [Menu 9.6.3].

## PIN code (4 to 8 digits)

The PIN (Personal Identification Number) code protects your USIM card against unauthorized use. The PIN code is usually supplied with the USIM card. When the PIN Code Request is set to Enable, your phone will request the PIN code every time it is switched on. When the PIN Code Request is set to Disable, your phone connects to the network directly without the PIN code.

## PIN2 code (4 to 8 digits)

The PIN2 code, supplied with some USIM cards, is required to access functions such as Fixed Dial Number. These functions are only available if supported by your USIM card.

## PUK code (4 to 8 digits)

The PUK (PIN Unblocking Key) code is required to unlock a blocked PIN code. The PUK code may be supplied with the USIM card. If not, contact your network operator's customer service for the code. If you lose the code, contact your network operator's customer service.

# Getting started

## PUK2 code (4 to 8 digits)

The PUK2 code, supplied with some USIM cards, is required to unlock a blocked PIN2 code. If you lose the code, contact your network operator's customer service.

## Security code (4 to 8 digits)

The security code protects the unauthorized use of your phone. The default security code is set to '0000' and the security code is required to delete all phone entries and to restore the handset to factory setting.

## Display information

### No USIM idle screen

This is the initial screen of the phone that appears when there is no USIM card installed in the phone, or the installed USIM card is invalid. In this screen, users can only make emergency calls, and turn the phone off. To turn off the phone, press and hold the End key for a few seconds.

## Screen structure

If there is no USIM card installed, an animation telling you to insert a USIM card appears. If the USIM card inserted into the phone is invalid, an animation telling you that the USIM card is locked appears.

## Emergency call function

Emergency calls can be made with or without a SIM in the handset. When in Australia, key 000 then press the Send key. To access the local emergency service when roaming, key 112 then press Send key.

## Idle screen

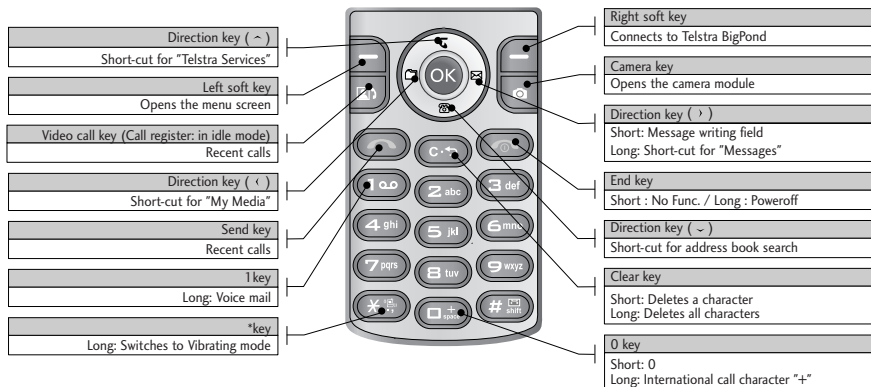
The idle screen appears when you have installed a proper USIM card and turned the phone on.

## Screen structure

Idle screen consists of the operator's name, indicators, date and time on a background image. You can change the wallpaper in the display settings menu.

## Key functions

The functions of the keys in the idle screen status are described below.





## Numbering screen

The numbering screen appears when a number key is pressed in the idle screen.

### Screen structure

The numbering screen consists of status indicators, dialled number, and soft menu. Status indicators are the same as that of the idle screen. You can change the size and colour of the dialling font in the display settings menu. You can make a call while dialling a phone number by pressing the Send or Video Call key.

### Soft key

You can use the soft keys for several functions while dialling a number. Using the left soft key, you can save the current number to Contacts, you can send a message to the number, you can search for the number in Contacts and you can make a voice call/video call.

## Handset lock screen

When the Handset Lock function is selected, you can only make an emergency call, release the lock, and turn off the phone in this screen. As always, you can turn the phone off by pressing and holding the End key for a few seconds.

### Screen structure

The screen structure of the Handset Lock screen is the same as that of the idle screen, except that the lock message appears instead of the idle screen.

### Emergency call function

You can still make an emergency call when the handset is locked. Simply dial 000 or 112 emergency numbers as normal, then press Send. Only Emergency calls are allowed to be dialled when the handset is locked.

## Unlock function

If you press the OK key, a popup screen appears asking you to input the Security code to unlock the phone. The Security code is configured by selecting **Settings** → **Security** → **Change Codes**. If you key in an incorrect Security Code, the phone will remain in Handset Lock status. If you key in the correct Security Code, the phone will be unlocked, and the idle screen will be displayed. If you have turned the phone off in the Handset Lock status, you will find the phone remains in Handset Lock status when you turn it on.




# General functions

## Making and answering calls

Ensure you tell the other party before recording a voice call.

## Making and answering a video call

You can make a video call in a 3G covered service area. If the called user has a 3G video phone in a 3G covered service area, the call will be established. You can also answer a video call for video incoming call. To make/answer a video call, do the following.

1. Input the phone number using the keypad, or select the phone number from the calls made/received lists.
  - ▶ To correct mistakes, press the  key briefly to delete the last number, or press and hold the  key to delete all numbers.
2. If you do not want to use the speakerphone, ensure you have the headset plugged in.
3. To start the video function, press .

- ▶ You will be notified that you will need to close other applications to make the video call.

### Note

- ▶ The video call may take some time to connect. Please be patient. The connection time will also depend on how quickly the other party answers the call. While the video call is connecting, you will see your own images; after the other party has answered, their image will be displayed on screen.

4. Adjust the camera position if necessary.
5. You can access the following options by pressing the right soft key [Options].
  - ▶ End Call
  - ▶ Mute
  - ▶ Private mode
  - ▶ Hide My Picture
  - ▶ Hold
  - ▶ Capture
  - ▶ View sender number
  - ▶ Settings: You can set the camera related options.
    - Zoom: x1 / x2

- Night Mode: On / Off
- Quality: Super Fine / Fine
- Rev Cam: None / Water (Turns the image upside down)

### Note





#### ► When in a Video Call:

If the camera is rotated away from the user, the image transmitted to the other person will appear upside down. To reverse the image being transmitted, simply press the Camera button on the keypad. Pressing the Camera button again will reverse the image again.

#### ► Others

- Contacts: You can save the number in the Address Book.
  - Messaging: You can send a text message or a multimedia message.
  - Email: You can send an email.
  - Write Note: You can take notes.
6. Press the end key to finish the call, or close the handset.

## Making a voice call




1. Enter the number including the full area code.
  - To delete a digit press the  key.
  - To delete all digits press and hold the  key.
2. Press the  key to make the call.
3. Press the  key to finish the call, or close the handset.

### Note

- To activate the speakerphone during a call, press and hold the  key for at least 2 secs.

## Making a voice/video call from Contacts

It is easy to call anyone whose number you have stored in your Contacts.


Press the down navigation key to access the contacts list. Scroll to your chosen contact. Press the  key to make a voice call, or  key to make a video call. Press the  key to finish the call.

## Making international calls

1. Press and hold the  key for the international

# General functions

prefix. The '+' character can be replaced with the international access code.



2. Enter the country code, area code, and the phone number.
3. Press the  key.

## Adjusting the volume


During a call, if you want to adjust the earpiece volume, use the side keys of the handset. In idle mode with the flip cover open, you can adjust the key volume using the side keys.

## Answering a call


When you receive a call, the phone rings and the flashing phone icon appears on the screen. If the caller can be identified, the caller's phone number (or name if stored in your Contacts) is displayed.

1. Open the flip and press the  key to answer an incoming call. If the answer mode is set to Press any key, any key will answer a call except for the  key.

### Note

- ▶ To reject an incoming call, press the  key or the right soft key twice.


- ▶ If you set "Answer mode" as "Open flip" (Menu 9.4.7), you can answer the call simply by opening the flip.

2. End the call by closing the handset or pressing the  key.

### Note

- ▶ You can answer a call while using the Contacts or other menu features.

## Signal strength

If you are inside a building, being near a window may give you better reception. You can see the strength of your signal by the signal indicator see the strength (  ) on your handset's display screen.

## Entering text

You can enter alphanumeric characters using the keypad.


For example, storing names in the Contacts, writing a message, creating a personal greeting or scheduling events in the calendar all require entering text.

Following text input methods are available in the handset.


## T9 mode

This mode lets you enter words with only one keystroke per letter. Each key on the keypad has more than one letter. The T9 mode automatically compares your keystrokes with an internal dictionary to determine the correct word, thus requiring far fewer keystrokes than the traditional ABC mode. This is sometimes known as predictive text.



## ABC mode

This mode lets you enter letters by pressing the key labeled with the required letter once, twice, three times or more until the correct letter is displayed. Press and hold down  until Abc mode is displayed.

## 123 mode (Number mode)



Type numbers using one keystroke per number. To change to 123 mode in a text entry field, press  key until 123 mode is displayed.

## Changing the text input mode


1. When you are in a field that allows characters to be entered, you will notice the text input mode indicator in the upper right corner of the display.
2. You can change the text input mode between T9 mode and ABC mode by a long press of . And you can change upper and lower case of the mode by a short press of .

## Using the T9 Mode

The T9 predictive text input mode allows you to enter words easily with a minimum number of key presses. As you press each key, the handset begins to display the characters that it thinks you are typing based on a built-in dictionary. As new letters are added, the word changes to reflect the most likely candidate from the dictionary.

1. When you are in the T9 predictive text input mode, start entering a word by pressing keys  to . Press one key per letter.
  - ▶ The word changes as letters are typed. Ignore what's on the screen until the word is typed completely.


# General functions



- ▶ If the word is still incorrect after typing completely, press the  key once or more to cycle through the other word options.

Example

Press     to type **Good**.

Press the  key to get **Home**.




- ▶ If the desired word is missing from the word choices list, add it by using the ABC mode.
2. Enter the whole word before editing or deleting any keystrokes.
  3. Complete each word with a space by pressing the  key.











To delete letters, press the  key. Press and hold down the  key to erase entire words.

## Using the ABC Mode

Use the  to  keys to enter your text.

1. Press the key labelled with the required letter:
  - ▶ Once for the first letter
  - ▶ Twice for the second letter
  - ▶ And so on


2. To insert a space, press the  key once. To delete letters, press the  key. Press and hold down the  key to clear the display. Refer to the following table for more information on the characters available using the alphanumeric keys.

Key	Characters in the order display	
	Lower case	Upper case
	., ? ! 1	., ? ! 1
	abc2âáãäåäæç	A B C 2 Â Á Ã Ä Å Æ Ç
	def3èéêë	D E F 3 È É Ê Ë
	ghi4ìíîï	G H I 4 Ì Í Î Ï
	jkl5£	J K L 5 £
	mno6ñòóôõöøœ	M N O 6 Ñ Ò Ó Ô Õ Ö Ø Æ
	pqr7ß\$	P Q R 7 ß \$
	tuv8ùúûü	T U V 8 Ù Ú Û Ü
	wxyz9	W X Y Z 9
	Space, 0	Space, 0

## Using the 123 (Number) mode

The 123 Mode enables you to enter numbers in a text message (a telephone number, for example). Press the keys corresponding to the required digits before manually switching back to the appropriate text entry mode.

## Using the symbol mode

The symbol mode enables you to enter various symbols or special characters. To enter a symbol, select [Options] → [Insert] → [Symbol]. Use the navigation and numeric keys to select the desired symbol and press the  key.

## Using the hands-free

During a voice call the Centre Soft Key is labelled **Spk. On**. Pressing the **OK** key activates the speaker so that you can use the handset in handsfree mode. The Centre Soft Key will change to **Spk. Off** when the speaker is active, press the OK key again to resume normal handset conversation mode.



# Main menu

You can launch a menu by pressing the OK key in the idle screen. Move to a desired item and press the OK key to go into the sub menu.

From main menu you can also go into a submenu by directly pressing the corresponding numeric key as follows. The main menu consists of the following top menus and sub menus.

## 1. SAT services

(with network operator specific service name stored on USIM card)/ Profiles  
(If SAT not supported by USIM)

## 2. My Media

- 2.1 Images
- 2.2 Videos
- 2.3 Sounds
- 2.4 Music Player
- 2.5 Games & Applications
- 2.6 Bluetooth Data
- 2.7 Other Files
- 2.8 Memory Card

## 3. Recent Calls

- 3.1 Missed Calls
- 3.2 Received Calls
- 3.3 Dialed Calls
- 3.4 All Calls
- 3.5 Call Duration

## 4. Messages

- 4.1 New Message
- 4.2 Inbox
- 4.3 Email Inbox
- 4.4 Drafts
- 4.5 Outbox
- 4.6 Sent
- 4.7 Voice Mail
- 4.8 Video Mail
- 4.9 Templates
- 4.0 Settings

## 5. My Place

This menu contains links to useful Telstra services.

## 6. Address Book

- 6.1 New Contact
- 6.2 Contact List
- 6.3 Speed Dial List
- 6.4 Caller Groups
- 6.5 My Numbers
- 6.6 Settings

## 7. Organiser & Tools

- 7.1 Alarm Clock
- 7.2 Calendar
- 7.3 Tasks
- 7.4 Notepad
- 7.5 Calculator
- 7.6 Unit Converter
- 7.7 World Clock
- 7.8 Stop Watch
- 7.9 Date Finder
- 7.0 D-Day Counter
- 7.\* Favourites

## 8. Camera

- 8.1 Take Photo
- 8.2 Record Video
- 8.3 Record Voice
- 8.4 Memory Status

## 9. Settings

- 9.1 Profiles (for SAT USIM)
- 9.2 Date & Time
- 9.3 Phone Settings
- 9.4 Call Settings
- 9.5 Connectivity
- 9.6 Security
- 9.7 Memory Status
- 9.8 Handset Information
- 9.9 Internet
- 9.0 Reset Settings

Depending on the support or not of SAT (i.e. SIM Application Toolkit) services on the USIM card, the menu 1 may be different.

In case the USIM card supports SAT services, this menu will be the operator specific service name stored on the USIM card, for instance “Special”. Please refer in that case to the information provided with your USIM card for further information on how to use the related options.

In case the USIM card does not support SAT services, menu 1 will be “Profiles” and allows you to select or customize some of the alert profiles. The following describes this menu Profiles.

You can select ringtone or vibration for an incoming call and configure the sound and volume of the ringtone, button sound, and sound effect, according to a profile. The profiles provided include [General], [Silent], [Outdoor], [Vibrate], [Headset], [Car], [User defined 1], and [User defined 2]. Select a profile, and press the OK button to activate the profile. The [Silent], [Vibrate], [Headset], and [Car] profiles do not have an Option menu. Move the cursor to the corresponding profile. Then menus available are displayed on the softbar below the screen. Select the Edit menu for [General],

[Outdoor], [Headset], [Car], [User defined 1] & [User defined 2] profile to change the configuration. The different list of options available when each profile has been selected for editing.

1. Alert type
2. Ringtones
3. Message Tone
4. Effect tones
5. Volume

## Alert type

This option determines the incoming call notification mode. You can select from [Ringing], [Vibrate], [Light Only], [Ring & vibration], [Vibration after ring], [Ring after Vib.], [Max. ring & vibration].

## Ringtones

**Voice Call Tone:** This option determines the incoming Voice telephony call alert.

**Video Call Tone:** This option determines the incoming Video telephony call alert.

## Message Tone

This option determines the alert tone to be played by the phone upon receiving a message.

## Effect tones

**Key Tone:** You can set whether to emit the key tone when pressing the keys or not.

**Feedback Tone:** You can set whether to emit the feedback tone or not.

## Volume

You can set the volume of Ringtone, Key Tone, Call and Multimedia from 7 available levels.

## Images

### MENU 2.1

This menu consists of embedded links for downloading images through the Internet, **Take Photo** menu, **Make Animated GIF** and Default images. Photos taken using the camera are stored in the Images folder and you can create new folders to manage them. You can also save selected files as animated GIFs using **Make Animated GIF** menu.

When a file is selected, the following options are available using the right soft key [Options].

- ▶ **Set As:** You can set the selected image file as Wallpaper or Picture ID.
- ▶ **Send Via:** You can send the selected image via Multimedia message, Email or Bluetooth.
- ▶ **Delete** (Not available for default images): Deletes the selected image.
- ▶ **Rename** (Not available for default images): You can rename the image file.
- ▶ **Move** (Not available for default images): You can move the file to Handet Memory, Memory Card or Bluetooth Data.

- ▶ **Copy:** You can copy the file to Handet Memory, Memory Card or Bluetooth Data.
- ▶ **Sort By:** You can sort the files by name, date, or file type.
- ▶ **Delete All:** You can delete all the files. The default images will not be deleted.
- ▶ **Multi Delete:** You can delete multiple files at one time. After selecting files by pressing the OK key [Select], press the left soft key [Delete].
- ▶ **New Folder:** You can create a new folder.
- ▶ **Icon View/ List View:** You can view the images as Icon view or List view.
- ▶ **Information:** Shows information on the selected image file.

## Videos

### MENU 2.2

This menu consists of embedded links for downloading videos through the Internet and **Record Video** menu. Video clips recorded using the camera are stored in Videos folder and you can create new folders to manage them. Here, you can manage or send downloaded or recorded video clips.

When a file is selected, the following options are available using the right soft key [Options].

- ▶ **Send Via:** You can send the selected video clip via Multimedia message, Email or Bluetooth.
- ▶ **Delete** (Not available for default videos): Deletes the selected video clip.
- ▶ **Rename** (Not available for default videos): You can rename the video file.
- ▶ **Move** (Not available for default videos): You can move the file to Handet Memory, Memory Card or Bluetooth Data.
- ▶ **Copy:** You can copy the file to Handet Memory, Memory Card or Bluetooth Data.
- ▶ **Sort By:** You can sort the files by name, date, or file type.
- ▶ **Delete All:** You can delete all the files.
- ▶ **Multi Delete:** You can delete multiple files at one time. After selecting files by pressing the OK key [Select], press the left soft key [Delete].
- ▶ **New Folder:** You can create a new folder.
- ▶ **Icon View/ List View:** You can view the files as Icon view or List view.

- ▶ **Information:** Shows information on the selected video file.

You can play the video clip by pressing the OK key [Play]. To pause the playback, press the OK key [Pause] during the playback. To resume the paused playback, press the OK key once again. You can access the following option menus by pressing the right soft key [Options].

- ▶ **Repeat:** You can set the repeat option from One, All and Off.
- ▶ **Send Via:** You can send the selected video clip via Multimedia message, Email or Bluetooth.
- ▶ **Capture:** You can save what is on the paused screen as an image file.
- ▶ **Rename:** You can rename the video file.
- ▶ **Landscape View:** You can view the video in Landscape view.
- ▶ **Information:** Shows information on the video file.

## Sounds

MENU 2.3

This menu consists of embedded links for downloading sounds through the Internet and **Record Voice** menu. Voice clips recorded using the

recorder are stored in Sounds folder and you can create new folders to manage them. Here, you can manage or send downloaded or recorded voice clips.

When a file is selected, the following options are available using the right soft key [Options].

- ▶ **Set As:** You can set the selected sound as Ringtone or Ringtone ID.
- ▶ **Send Via:** You can send the selected sound via Multimedia message, Email or Bluetooth.
- ▶ **Delete** (Not available for default sounds): Deletes the selected sound file.
- ▶ **Rename** (Not available for default sounds): You can rename the sound file.
- ▶ **Move** (Not available for default images): You can move the file to Handset Memory or Bluetooth Data.
- ▶ **Copy:** You can copy the file to Handset Memory or Bluetooth Data.
- ▶ **Sort By:** You can sort the files by name, date, or file type.
- ▶ **Delete All:** You can delete all the files. The default sounds will not be deleted.
- ▶ **Multi Delete:** You can delete multiple files at one time. After selecting files by pressing the OK key [Select], press the left soft key [Delete].
- ▶ **New Folder:** You can create a new folder.
- ▶ **Information:** Shows information on the selected sound file.

## Music Player

MENU 2.4

### Note

If Music Player is minimised while playing music, you can access the music player by pressing the **Task Menu** key or by **My Media** → **Music Player** → **Now Playing**.

## Now playing

This menu will be activated when there are some tracks currently playing.

## All Songs

You can view the entire music files in the phone.

## Playlists

You can create your own playlists by choosing tracks from the **All Songs** menu list.

## Shuffle Songs

Plays music files in random order.

## Settings

**Set Shuffle:** Select whether to set shuffle feature On or Off.

**Set Repeat:** Allows you to set the play mode from One, All and Off.

**Visualization:** Allows you to select the desired equalizer on the main screen.

**Equalizer:** Allows you to select the desired sound style.

## Games & Applications MENU 2.5

You can easily download games and other applications by selecting **Download More**. The downloaded applications will be stored in the 'Games & Applications' folder by default. Please note that additional cost may occur when using online services.

You can access the following menus by pressing the right soft key [Options].

### ► Java Accounts

#### 1. Adding a new Java account

Press the right soft key [Options] and select **New Account**.

The following items need to be configured.

Account Name	JAVA settings account name.
Proxy	Choose from Enable and Disable.
Connection mode	Choose from given list of connection modes. (default is TCP with Proxy)
Proxy Address	WAP Gateway IP address provided by the operator. (e.g. 195. 115. 025. 129)
Port Number	Port details are provided by operator.
User Name	Enter the user name of the Java account.
Password	Enter the Java account password.
Access Points	Access point setting for the corresponding service. (More details for adding or editing new Access point refer page 78)

Press the left soft key [Save] to save the configuration settings.

## 2. Activating a Java account

Move the cursor to the account which you would like to activate and press the left soft key [Activate].

## 3. Editing a Java account

Press the right soft key [Options] and select **Edit**. The default Java account cannot be edited.

- **Information:** You can check the memory status and current Java version.

## Bluetooth Data

MENU 2.6

The files received using Bluetooth® are saved in this folder. You cannot create a sub-folder within the Bluetooth data folder.

You cannot copy or move files that are not managed by My Media.

## Other Files

MENU 2.7

Other files except images, videos, sounds, games & applications are stored in this folder.

## Memory Card

MENU 2.8

If you purchase an optional external microSD memory card, you can manage more content. Refer to the section “How to use a microSD memory card” to learn how to insert and remove the memory card. You can manage content as you do on your phone.



# Recent Calls

You can view missed, received, dialled and entire call records. Each call record menu provides the following functions.

- ▶ You can make a voice or video call to the number in the call record.
- ▶ You can save the number in the call record in the Contacts.
- ▶ You can send a message to the number in the call record.
- ▶ You can view detailed information of the call records such as the date, time and call time.
- ▶ You can clear call records.

## Missed Calls

MENU 3.1

Allows you to view missed call records, make a call, send a message, and save the number in the Address book.

## Received Calls

MENU 3.2

Allows you to view received call records, make a call, send a message, and save the number in the Address book.

## Dialled Calls

MENU 3.3

Allows you to view dialled call records, make a call, send a message, and save the number in the Address book.

## All Calls

MENU 3.4

Allows you to view all of the missed, received, and dialled call records. You can make a call, or send a message to the number you have selected from the records. You can also save the number in the Address book.

## Call Duration

MENU 3.5

You can view call time by types. Press Options key to choose whether partial initialisation or entire initialisation. Also press Clear key for initialisation of selected duration type. Initialisation will require your Security code.

### Last Call (Menu 3.5.1)

Shows the latest call time in units of hour/minute /second.

### Received Calls (Menu 3.5.2)

Shows incoming call time.

### Dialled Calls (Menu 3.5.3)

Shows outgoing call time.

### All Calls (Menu 3.5.4)

Shows total call time.

# Messages

## New Message

MENU 4.1

### Text Message (Menu 4.1.1)

1. Press the OK key and select Messages → New Message → Text Message. (You can directly access Text Message menu by pressing the right navigation key in idle mode.)
2. Enter your message in the Message field.
3. You can insert the followings in the message by pressing the left soft key [Insert].
  - ▶ **Symbol:** You can insert diverse symbols.
  - ▶ **Image:** You can insert an image. (One image per slide)
  - ▶ **Audio:** You can insert a sound file. (One sound per slide)
  - ▶ **Video:** You can insert a video clip. (One video clip per slide)
  - ▶ **New Photo:** The camera module opens and you can take a picture. The picture can be inserted in the message by pressing the OK key [Insert]. (One picture per slide)

- ▶ **New Audio:** The voice recorder module opens and you can record a sound. The recorded sound can be inserted in the message by pressing the OK key [Insert]. (One sound per slide)
- ▶ **New Video:** The video recorder module opens and you can record a video. The recorded video can be inserted in the message by pressing the OK key [Insert]. (One video clip per slide)
- ▶ **Subject:** Select this to insert a subject.
- ▶ **Others:** Allows you to insert vCard, vCalendar, vNote or vTask.
- ▶ **Template:** You can insert a text template, multimedia template or signature saved on the phone. After selecting one, press the OK key. The selected template is inserted into the Message window.
- ▶ **Contact:** You can add a name and/or a number stored in the Contacts. Make your selection to send either the Name, Number or Name & Number and press the OK key. The Contacts list opens and you can search the desired contact to be inserted.

- ▶ **Slide:** Select this to add a new slide.
  - ▶ **Note:** If you insert an image, a sound, or a video clip in a text message, the screen is changed to Multimedia Message screen.
4. You can access the following options by pressing the right soft key [Options].
- ▶ **Save to Drafts:** Select this to save the message to drafts.
  - ▶ **Settings:** You can configure text message related options.
    1. Validity Period: This network service allows you to set how long your text messages will be stored at the message centre.
    2. Delivery Receipt: By enabling this option, you can verify whether your message has been sent successfully.
    3. Reply via Same Message Centre: Determine whether to reply via same message centre or not.
  - ▶ **Text Entry Mode:** Select the desired text entry mode.

### ▶ Text Entry Settings

1. Text Entry Language: Select the desired text entry language.
  2. T9 Next Word Prediction: Select whether to enable T9 text entry mode to predict the next word or not.
  3. T9 Dictionary:
- ▶ **Cancel:** Select this to cancel editing and go back to idle mode.
5. Press the OK key [Send To] to send the message. The message will automatically be saved in the **Sent** folder. If the message has not been sent, it will remain in the **Oubox** with a failed status.

## Multimedia Message (Menu 4.1.2)

You can write and edit a message containing a combination of text, image, video and audio.

1. Enter your message in the Message field.
2. You can insert the followings in the message by pressing the left soft key [Insert].
  - ▶ **Symbol:** You can insert diverse symbols.
  - ▶ **Image:** You can insert an image.  
(One image per slide)

- ▶ **Audio:** You can insert a sound file. (One sound per slide)
  - ▶ **Video:** You can insert a video clip. (One video clip per slide)
  - ▶ **New Photo:** The camera module opens and you can take a picture. The picture can be inserted in the message by pressing the OK key [Insert]. (One picture per slide)
  - ▶ **New Audio:** The voice recorder module opens and you can record a sound. The recorded sound can be inserted in the message by pressing the OK key [Insert]. (One sound per slide)
  - ▶ **New Video:** The video recorder module opens and you can record a video. The recorded video can be inserted in the message by pressing the OK key [Insert]. (One video clip per slide)
  - ▶ **Subject:** Select this to insert a subject.
  - ▶ **Others:** Allows you to insert vCard, vCalendar, vNote or vTask.
  - ▶ **Template:** You can insert a text template, multimedia template or signature saved on the phone. After selecting one, press the OK key. The selected template is inserted into the Message window.
  - ▶ **Contact:** You can add a name and/or a number stored in the Contacts. Make your selection to send either the Name, Number or Name & Number and press the OK key. The Contacts list opens and you can search the desired contact to be inserted.
  - ▶ **Slide:** Select this to add a new slide.
3. You can access the following options by pressing the right soft key [Options].
- ▶ **Save to Drafts:** Select this to save the message to drafts.
  - ▶ **Set Slide**
    1. Duration: You can configure the duration of each page of the messages.
    2. Colour: You can configure the text colour and background colour.
  - ▶ **Settings:** You can configure text message related options.
    1. Priority: You can select the priority level of the messages (Low, Normal and High).
    2. Validity Period: This network service allows you to configure the term of validity for a message when transmitting a multimedia

message. The message would be saved in the multimedia message server only for the configure term.

3. Delivery Receipt: By enabling this option, you can verify whether your message has been sent successfully.
4. Request Read Receipt: Determines whether to request a read confirmation mail for a multimedia message.

► **Text Entry Mode:** Select the desired text entry mode.

► **Text Entry Settings**

1. Text Entry Language: Select the desired text entry language.
2. T9 Next Word Prediction: Select whether to enable T9 text entry mode to predict the next word or not.
3. T9 Dictionary:

► **Cancel:** Select this to cancel editing and go back to idle mode.

4. Press the OK key [Send To] to send the message. The message will automatically be saved in the

**Sent** folder. If the message has not been sent, it will remain in the **Outbox** with a failed status.

### Note

You can send a multimedia message straight from your camera, video recorder or voice recorder.

- After taking a photo, recording a video or recording a voice using the **Camera** [Menu 8], press the left soft key [Send]. The capture image, recorded video clip or voice is inserted into the multimedia message window. You can create a multimedia message using it.

## Email (Menu 4.1.3)

To send/receive an email, you should set up the email account. (Refer to page 54 for how to set up an Email account.)

1. Enter the email addresses of the recipients in the To, Cc, Bcc fields. You can search the Contacts by pressing the OK key.

### Note

- Enter the reference email address to forward the email in Cc(Carbon copy) field.

- Enter a hidden reference email address to forward the email without forwarding information in Bcc(Blind Carbon Copy) field.
  - Only valid email addresses are allowed for the recipient (To), reference address (Cc) and hidden reference address (BCC) fields. When an email address has been specified, another field where you can specify another address appears. You can specify up to 20 recipients for the To and Cc address fields and 10 recipients for the BCC address field.
2. Move the cursor to the Subject field and key in the subject.
  3. You can enter the message contents by moving the cursor to the Message field.
  4. Use the following functions by using the right soft key [Options].
    - ▶ **Insert:** Select this menu to insert symbols, templates, emoticons and contacts. It is also possible to attach existing multimedia files (pictures videos and sounds) or create a new multimedia file to send.
    - ▶ **Preview:** You can preview the created email before sending it.
    - ▶ **Send:** Sends the created email.
    - ▶ **Save to drafts:** Select this menu to save the message in Drafts.
    - ▶ **View attachment:** Shows the attached files. (This item is only available when some files have been attached.)
    - ▶ **Settings:** You can configure email related options here.
      1. Priority: You can select the priority level of the messages, low, normal or high.
      2. Request Read Receipt: Determines whether to request a read confirmation email for the email message.
    - ▶ **Text Entry Mode:** Select the desired text entry mode.
    - ▶ **Text Entry Settings**
      1. Text Entry Language: Select the desired text entry language.
      2. T9 Next Word Prediction: Select whether to enable T9 text entry mode to predict the next word.

3. **T9 Dictionary:** Allows you to add words to the T9 dictionary.

- ▶ **Add to dictionary:** You can add a new word to the dictionary.
- ▶ **Set mail priority:** You can configure the priority of the email you wish to send.
- ▶ **Cancel:** Exits the email composer.

5. When you have finished writing an email, press the right soft key [Send] to send the email.

## Inbox

MENU 4.2

1. You can view saved messages. Select a message and then press the OK key [View] to view the message.
2. You can view the previous or next message by using the left/right navigation keys.
3. To view an multimedia message (Notification), select **Retrieve** in the message view screen. Then the file is transmitted, and you can view the file when the transmission is complete.
4. To create a reply message to the selected message press the left soft key [Reply].

You can use the following functions by using [Options] key.

- ▶ **Delete:** Deletes the current message.
- ▶ **Forward:** Forwards the selected message. (Not supported for multimedia message (Notification) and WAP push messages.)
- ▶ **Information:** You can check information of the selected message.
- ▶ **Multi Delete:** You can use this for multiple deletion.
- ▶ **Delete All Read Messages:** Deletes all read messages.
- ▶ **Delete All:** Select this to delete all messages.

## Email Inbox

MENU 4.3

### Viewing email message list

1. Select an email account and then press the OK key to view the received email list.
2. Using the Retrieve key, you can retrieve a new email list from the email server of the selected account.



3. In email list, you can use the following functions by using the [Options] key.

- ▶ **Reply:** Creates a reply to the selected email.
  - Sender: Creates a reply to the sender of the email only.
  - All: Creates a reply to all contacts of the email.
- ▶ **View:** Opens selected email.
- ▶ **Retrieve:** Retrieves new email messages.
- ▶ **Write New Message:** You can create Text Message, Multimedia Message or Email.
- ▶ **Mark/Unmark:** Use mark/unmark option for multiple deletion.
- ▶ **Save in Add. Book:** Save sender's address to Address Book.
- ▶ **Set as Read:** You can set the selected email to Read.
- ▶ **Delete:** Deletes an email. Deleted emails are temporarily saved in Trash.

## Viewing an email message

1. Select one of the received emails and press the OK key to receive the contents of the email.

2. The contents of the received email are automatically displayed in the View screen.

3. You can view the contents of the previous or next email by using the left/right navigation keys.

When in the email View screen, you can select the following functions after pressing the [Options] key.

- ▶ **Reply:** Creates a reply to the selected email.
  - Sender: Creates a reply to the sender of the email only.
  - All: Creates a reply to all contacts of the email.
- ▶ **Forward:** Forwards the selected email message to another email address.
- ▶ **Save in Add. Book:** Save sender's address to Address Book.
- ▶ **Write New Message:** You can create Text Message, Multimedia Message or Email.
- ▶ **Use:** You can extract the number, email address or web address.
- ▶ **View Attachment:** Shows the attached file.
- ▶ **View Addresses:** Shows the email addresses.
- ▶ **Delete:** Deletes the selected email message.

## Trash

1. You can restore or permanently delete deleted emails in Trash.
2. Select Trash in the mailbox and press the OK key to view the deleted email list.
3. Press the Delete key to delete a deleted email permanently.
4. Press the Restore key to restore a deleted email.
5. Using the Option key, you can select the following functions.
  - ▶ **Restore:** Restores a deleted email.
  - ▶ **Delete:** Deletes an email permanently.
  - ▶ **Mark/Unmark:** Use mark/unmark option for multiple deletion.

### Note

- ▶ The emails in Trash will not be received again.

## Drafts

MENU 4.4

You can view saved messages. Select a message and then press the OK key to view the message.

You can use the following functions by using the [Options] key.

- ▶ **Information:** You can check the message type, subject, priority, size, and inserted file information.
- ▶ **Multi Delete:** You can delete multiple files at one time. After selecting files by pressing the OK key [Select], press the left soft key [Delete].
- ▶ **Delete All:** Deletes all the drafts.

## Outbox

MENU 4.5

The Outbox is a temporary storage place for messages waiting to be sent. Failed messages are also placed in Outbox. For example, Emails will be placed in Outbox if the Email account is not correctly configured.

1. Select a message and then press the OK key to view the message.
2. You can use the following functions by using the left soft key [Options].

### [For sending / waiting messages]

- ▶ **Cancel Sending:** You can stop sending/waiting status.

# Messages

- ▶ **Delete All:** Deletes all the messages in the Outbox.

## [For sending a failed message]

- ▶ **Delete:** Deletes the current message.
- ▶ **Edit:** You can edit the selected message.
- ▶ **Information:** You can check the message type, subject, priority, size, and inserted file information.
- ▶ **Delete All:** Select this to clear up the Outbox.

You can resend the selected message by pressing the left soft key [Resend].

## Sent

MENU 4.6

Shows the messages you sent (Text message / Multimedia message / Email).

Using the right soft key [Options], you can do the followings:

- ▶ **Delete:** Deletes the selected message.
- ▶ **Information:** You can check the message type, subject, priority, size, and inserted file information.
- ▶ **Delete All:** Select this to clear up the the Sent folder.

You can forward the selected message using the left soft key [Forward].

## Voice Mail

MENU 4.7

You can connect to the voice mail centre. If there is no selected voice mail centre address, you can insert a new voice mail centre.

## Video Mail

MENU 4.8

This menu allows you to get the video mail if this feature is supported by the network service provider. Please check with your network service provider for details of their service in order to configure the handset accordingly.

## Templates

MENU 4.9

### Text Templates (Menu 4.9.1)

The following useful phrases are saved a default.

- Please call me back.
- I'm late. I will be there at
- Where are you now?
- I'm on the way.
- Urgent! Please contact.
- I love you.

You can send a message using a template, delete or edit it using the right soft key [Options].

You can also add frequently-used useful phrases using the left soft key [New].

## Multimedia Templates (Menu 4.9.2)

You can create, edit and view available templates when creating multimedia messages.

## Signature (Menu 4.9.3)

You can create your text signature and use the signature when you send messages. You can insert symbols, text templates, and contacts in the signature using the left soft key [Insert].

## Settings

MENU 4.0

### Text Message (Menu 4.0.1)

You can configure text message related options.

1. **Message Centre Number:** Input the address of SMSC.
2. **Message Subject:** You can decide whether to input the message subject or not.

3. **Message Types:** Select the desired message type between Text and Email.
4. **Validity Period:** This network service allows you to set how long your text messages will be stored at the message centre. (1 Hour, 6 Hours, 12 Hours, 1 Day, 2 Days, 1 Week, Maximum)
5. **Delivery Receipt:** By enabling this option, you can verify whether your message has been sent successfully.
6. **Reply via Same Message Centre:** Determine whether to reply via same message centre or not.

### Multimedia Message (Menu 4.0.2)

You can configure multimedia message related options.

1. **Priority:** You can configure the priority of a message for multimedia message transmission.
2. **Message Subject:** You can decide whether to input the message subject or not.
3. **Validity Period:** Allows you to configure the term of validity for a message when transmitting an multimedia message. The message would be saved in the MMS server only for the configured term.

4. **Request Delivery Receipt:** Determine whether to request a delivery confirmation mail for a multimedia message.
5. **Send Delivery Receipt:** Determine whether to request a delivery confirmation mail for a multimedia message.
6. **Request Read Receipt:** Determine whether to request a read confirmation mail for a multimedia message.
7. **Send Read Receipt:** Determine whether to allow sending a read confirmation mail for a read confirmation mail request.
8. **Automatic Download:** There are three settings for Automatic Download of Multimedia Messages.
  - Never: Messages will never be downloaded automatically.
  - Home Network Only: Messages will only be downloaded automatically when attached to your carrier's home network (not roaming).
  - Always: Messages will be automatically downloaded regardless of whether you are roaming or in your home network.

9. **Message Centre:** Allows you to configure network information such as the MMSC and the WAP gateway, to send a multimedia message.

10. **Message Size:** Sets the size limit of MMS messages that can be sent by your handset.

When in Message Centre:

You can change the active Message Centre using the right soft key [Activate] to activate a new profile you have created.

You can also View the details of the active Message Centre by pressing the centre soft key [View].

Pressing the right soft key [Options] will allow you to add, edit or delete a profile (you cannot delete the default profile). A profile name is selected by a check mark is the currently configured value.

Using the right soft key [Options] - **New**, you can add a new profile. You need to fill out the followings.

- ▶ **Name:** Profile name.
- ▶ **MMSC URL:** Enter the multimedia message centre URL.
- ▶ **MMSC Proxy:** Enter the WAP gateway address and port number.
- ▶ **MMSC Port:** Enter the WAP gateway port number.

- ▶ **Connection Mode:** Select one of the connection mode. (UDP(CO), UDP(CL), TCP with Proxy, TCP without Proxy)
- ▶ **Network profile:** Specify the access point name. (see WAP connection settings.)

Press the left soft key [Save] to save the changes and complete Multimedia Message Centre setting.

## Email (Menu 4.0.3)

You can configure settings for receiving and transmitting emails.

1. **Allow Reply Email:** Determine whether to allow sending a read confirmation mail for a read confirmation mail request.
2. **Request Reply Email:** Determine whether to request a read confirmation mail.
3. **Auto Retrieve:** You can configure Auto retrieve to retrieve emails automatically from the incoming mail server. When a new email arrives, an icon appears at the top of the screen. You can select the auto receiving time slot to Off, 15 Minutes, 30 Mins or 1 Hour. Please note that additional charges may be incurred using the Auto retrieve feature.
4. **Include Message in Fwd. & Reply:** Determine whether to include the received message when you forward the message or reply to it.
5. **Insert Signature:** You can configure a text signature to be attached to the end of an email. The configured signature text is automatically or manually attached to the end of the email when it is sent.
6. **Email Account:** You can create or configure an email account including the email server and user ID. You can edit a selected email account by pressing the left soft key [Edit]. You can select an email account to be used to send an email using the OK key. You can select the following functions using the left soft key [Options].
  - ▶ **Add new:** Create a new email account.
  - ▶ **Edit:** To edit the selected email account.
  - ▶ **Activate:** Activates the selected account for outgoing mail.
  - ▶ **Delete:** Deletes a selected email account. All the emails included in the account will be deleted.

## Creating a new email account

1. Select **Add new** from the Email account menu options.
2. The following items need to be configured.

Title	Enter a title.
User Name	Enter the user name of the email account.
Password	Enter the email account password.
Email Address	Enter the email address for outgoing mail.
Reply Email Address	Enter the email address to reply to your email.
Outgoing Mail Server	Enter the outgoing email server.
Incoming Mail Server	Enter the incoming email server.
SMTP Port Number	Enter the mail server port number. In general, the SMTP (Outgoing mail server port number) is 25.
Incoming Server Port	Enter the mail server port number. In general, the incoming mail server port number is 110 (POP3) or 143 (IMAP4).
Maximum Receive Size	Select the maximum email receive size using the left/right navigation keys. The permissible maximum receive size is no more than 500KB.

Mailbox Type	Select the email inbox type either POP3 or IMAP4 using the left/right navigation keys.
Save to Server	Determine whether to leave a copy of messages on the incoming server or not using the left/right navigation keys. When the mailbox type is set to IMAP4, a copy of messages are always saved to the server.
Save sent mail into	Select where to save the sent mails (when the mailbox type is set to IMAP4). When the mailbox type is POP3, sent mails are always saved into handset.
Access Points	Select an access point to connect to the Internet. You can select a configured access point using the left/right navigation keys.
Auto Retrieve	Decide whether to activate Auto retrieve or not using the left/right navigation keys. You can set the auto receiving time slot using the Auto retrieve [Menu 4.0.3.3]. (See page 53.)
SMTP Authentication	Decide whether the outgoing mail server to require authentication or not using the left/right navigation keys. When the SMTP authentication is set to On, you can enter the SMTP Username and SMTP Password for SMTP authentication.
APOP secure login	Decide whether to activate APOP secure login or not using the left/right navigation keys. When the mailbox type is IMAP4, APOP secure login is always set to OFF.

3. Press the left soft key [Done] to complete the email account configuration.

## Editing an email account

1. Select a desired email account from the email account list and press the left soft key [Edit].
2. You can edit desired fields by moving the cursor up and down.
3. When configuration is complete, press the left soft key [Done] to complete the email account configuration.

### Note

When you try to change the mailbox type, all emails downloaded before would be deleted.

## Voice Mail (Menu 4.0.4)

You can insert or modify voice mail centre.

## Video Mail (Menu 4.0.5)

You can add or modify video mail centre.

## Push Message (Menu 4.0.6)

You can configure the push message receipt option.

## Cell Broadcast (Menu 4.0.7)

- ▶ **Reception:** You can set the reception status.
- ▶ **Language:** This option lets you select the preferred languages. Cell broadcast messages will be displayed in the selected languages.
- ▶ **Topics:** To create a new topic, press the left soft key [Options] then select **Add Topic**. If you already have topics, you can edit, delete, or mark/unmark them by pressing the left soft key [Options].



# My Place

## My Place

This menu contains WAP links to useful Telstra services.

1 BigPond

2 FOXTEL

3 Search

4 Email

5 Music

6 Downloads

7 Photos

8 Maps

9 My Account

### Note

Contact your service provider for further information.

# Address Book

## New Contact

MENU 6.1

You can register a new contact address. You can enter the name, different phone numbers and email addresses of a new contact. You can also assign the contact to groups, include an image or avatar, assign a specific ringtone and even enter a memo for the contact. You can enter and manage contact addresses depending on the memory usage.

### Note

The contact entry fields may differ when you register a contact address in the USIM.

## Contact List

MENU 6.2

Performs the contact address search function. The search operation is performed based on a name as a default. The current search method and results found are displayed in the Search window. On the right side of the screen, an image or avatar registered to the selected contact address appears. You can make a phone call or send a message to the selected phone number. A Contacts search can be performed based on the phone number, or group information.

## Speed Dial List

MENU 6.3

Using this menu you can manage speed dials. Speed dials are configured between 2~9. You can register speed dials for any number of 5 numbers for a specific contact address, and a contact address may have multiple speed dials.

## Caller Groups

MENU 6.4

Using this menu you can manage group information (both stored in Handset and USIM). In the handset memory, there are 4 default groups: Colleagues, Family, Friends and School. You can add, edit and delete groups. When a ringtone for a number is not specified, a call from the number sounds the group ringtone assigned to the number for the group.

## My Numbers

MENU 6.5

You can save up to 3 own numbers being used in the USIM card.

## Settings

MENU 6.6

### Display data (Menu 6.6.1)

Select which contact information shall be displayed (from handset memory, from USIM card or both).

**Handset & SIM** is the default setting.

### Copy All (Menu 6.6.2)

You can copy contacts from the phone memory to the USIM or from the USIM to the phone memory.

### Move All (Menu 6.6.3)

You can move contacts from the phone memory to the USIM or from the USIM to the phone memory.

### Delete All (Menu 6.6.4)

Clears all contact information. You can delete all contacts saved in the mobile phone memory as well as on the USIM card.

# Organiser & Tools

## Alarm Clock

MENU 7.1

If you set the alarm, [Alarm icon] appears on the Indicator bar. The specified alarm sounds at the scheduled time. Press the [OK] key to stop the alarm, and the alarm is released. Press the the right soft key [Snooze] to activate the snooze function. The alarm sound stops and resumes after the Snooze duration. You can configure up to 5 alarms.

1. Select your desired alarm to configure in the alarm list. If there is no alarm, press the left soft key [New] to add a new alarm.
2. **Set/Cancel alarm:** Set or cancel the alarm using the options for specifying whether the alarm is on or by choosing the alarm time.
3. **Input alarm time:** Input your desired alarm time by specifying Hour and Minute. Choose either 'AM' or 'PM' visible if 12 hour format is specified for the phone.
4. **Repeat:** Select desired repeat mode using the left and right direction keys or select the desired one from the list pressing the OK key.
5. **Alarm Tone:** Select the bell to ring at the alarm time, using the left and right direction keys or opening the list by pressing the OK key.

6. **Memo:** Input alarm name.

7. When you have completed alarm clock setting, press the right soft key [Save].







## Calendar

MENU 7.2

### Schedule inquiry and search

#### 1. Reference by Months

You can refer to your schedule by months. The cursor is on the current date, and the registered date is underlined.

The schedule saved for the date where the cursor is located is represented by an icon. Pressing the shortcut key  moves to the previous year and pressing key  move to the next year. Pressing key  /  moves to the previous month, and key  /  moves to the next month. You can move the date using the up, down, left, and right direction keys.

#### 2. Reference by Days

Pressing the 'View' key in the reference by month moves to reference by day where you can refer to your schedule by days. You can refer to the moving date tab using the left and right key. As a

search result, brief schedule contents, repetition set up configuration, and alarm set up configuration are displayed. You can send the schedule to another phone or an Internet site through Text Message, Multimedia Message, Email or Bluetooth.

### 3. Detailed reference

You can refer to a detailed schedule, that is the whole contents of the schedule configured by user. You can send the schedule to another phone or an Internet site through Text Message, Multimedia Message, Email or Bluetooth.

After pressing the right soft key [Options], the following options are available.

- ▶ **Search:** You can search the schedule by keying in some letters of the subject.
- ▶ **Set Holiday:** You can set up or release user holidays. The selected date will be displayed in red.

To release the holiday, press the right soft key [Options] and select **Clear Holiday**.

- ▶ **View All:** You can view all the schedules.
- ▶ **Weekly View:** Select this to display the calendar in weekly view.

- ▶ **Go to Date:** Use this to jump to a specific date. Enter the date using the numeric keys and the left/right direction keys.
- ▶ **Delete Schedules:** You can delete elapsed(old), daily, weekly, monthly, or all schedules.

## Tasks

MENU 7.3

You can view, edit and add tasks to do. Tasks are displayed in time order. Tasks that have been completed or not completed are displayed in different ways.

## Add

To add a task, press the left soft key [New] in the Tasks list management screen. Then input the date, description and priority for the task.

When you have finished entering the data, press the left soft key [Save] to save the new task.

## Detailed view and Edit

To view detailed task contents, locate the cursor on the desired item in the Tasks list, and then press the OK key. You can edit and delete a task using the left soft key [Options].

## Set job status

Tasks set as finished are displayed as crossed out below the unfinished tasks in the Tasks list. You can set Finished tasks to Not finished by pressing the left soft key [Options] and selecting **Status**.

## Notepad

MENU 7.4

Using this function, you can view and manage saved notes, and add new notes.

## Add Note

To add a new note, press the left soft key [New]. Enter the contents of the note. You can save the note to the list by pressing the OK key [Save].

## Edit, Send, and Delete Note

You can access following options with the right soft key [Options] on the notepad screen.

- Edit: You can edit the selected note.
- Delete: To delete the selected note.
- Send Via: You can send the note through Text message, Multimedia message, or Email.




- Delete All: Use this to clear up the notepad.
- Information: You can check the date and time when the note was made and the size.

## Calculator

MENU 7.5

The calculator module allows you to perform basic arithmetic functions such as addition, subtraction, multiplication, and division as well as some scientific functions.

1. Press the right soft key [Function].
2. Select appropriate function.

You can input numbers using the number keys, and operators using the up, down, left, and right direction key. You can input a decimal point by pressing . Whenever you press , characters are sequentially deleted in reverse order. Whenever you hold  down, all the characters are deleted in one go.

When calculation is completed and the result is displayed on the screen, pressing a number clears the previous result and the calculator waits for new input, even if you did not press AC key. When calculation is completed and the result is displayed on the screen, pressing a symbol saves the result into the symbol, and continues calculation.

## Unit Converter


MENU 7.6

Using this menu, users can convert Area, Length, Weight, Temperature, Volume and Velocity.

To convert any unit:

1. Select the desired unit from Area, Length, Weight, Temperature, Volume, and Velocity and press the OK key.
2. The unit converter screen opens. Move the cursor to output unit.
3. Select the desired output unit using the left/right direction keys.
4. After moving the cursor to input field, key in the quantity. You can see how much it is in the output field.

### Note

You can input a decimal point by pressing .

## World Clock

MENU 7.7

The World Clock function provides time information on major cities worldwide. You can view the time of

the desired country or city by navigating using the left/right direction keys. You can select a desired city as a base using the left soft key [Homezone].

## Stop Watch

MENU 7.8

This menu allows you to record the elapsed time of an event. The duration of an individual lap time (up to 20 times) and the total time can be saved.

1. Select **New Time** and press the OK key [Start] to start timing. The running time is displayed as HH.MM.SS.hh (hours, minutes, seconds, hundredths of a second).
2. During the timing, you can record an individual lap time by pressing the right soft key [Lap]. Up to 20 lap times can be recorded.
3. You can stop or restart timing using the OK key. Press the left soft key [Reset] to reset the stop watch.
4. You can save individual lap times and the total time by pressing the left soft key [Options] and selecting **Save**. Key in the title. You can check the saved times in **Saved Times**.

## Date Finder

MENU 7.9

The date finder shows the start date, the target date and the number of remaining days.

## D-Day Counter

MENU 7.0

1. To add a new D-Day Counter item, select the left soft key [New].
2. Input the Date and notes when you add an item.
3. Press the left soft key [Save] to save the item.
4. You can do the followings with the right soft key [Options].
  - ▶ **Edit:** You can edit the selected item.
  - ▶ **Delete:** You can delete the selected item.
  - ▶ **Show at Idle Screen:** You can see the Remaining days for this item (D-Day) on the Idle screen top right corner.
  - ▶ **Delete All:** Deletes all saved items.

## Favourites

MENU 7.\*

In this menu, you can construct your own menu with the frequently used menus for easy access.

1. After selecting the desired location from the menu number 1 to #, press the OK key [Assign].
2. Select the menu you wish to add by pressing the left soft key [Assign]. The menu will be added in the Favourite list.

After making up the Favourites menu, the following options are available by pressing the right soft key [Options].

- Change Menu: You can change the favourite menu item with another one.
- Move To: You can move the menu item to another location.
- Remove Menu: Select this to remove the menu item from the list.
- Remove All: You can clear up the Favourite menu.

You can view the actual location of the favourite menu by pressing the left soft key [Info].



# Camera

## Take Photo

MENU 8.1

Using the camera module built into your phone, you can take pictures of people or events while on the move. Additionally, you can send photos to other people in a picture message. The right soft key [Options] will bring up the following options.

- ▶ **Change to Video Mode:** Go to the video application, enables you to record a video clip.
- ▶ **Resolution:** Sets the image size to 1280\*960 (default), 640\*480, 320\*240 or 160\*120. The selected image size appears on the capture screen.
- ▶ **Quality:** You can select the desired quality of photo by selecting either Super Fine, Fine or Normal mode by using the navigation keys.
- ▶ **Reverse View:** Allows you to reverse the image by using the Side Keys.
- ▶ **View Full Screen:** Allows you to view the subject in full screen.
- ▶ **Self Timer:** Determines the camera timer.

## ▶ Advanced Settings

- **White Balance:** This adjusts the Light Effect level and you can select from the following options: Auto / Daylight / Incandescent / Cloudy / Fluorescent / Night Mode - Color
- **Color Effect:** Allows you to apply special effects to the picture. Press the left or right navigation key to find the tone you want to use from the following options: Color, Sepia, Mono and Negative.
- **Shutter Tones:** Allows you to select a sound when you press the shutter. Tone 1 / Tone 2 / Tone 3 / Off ]
- ▶ **Default Settings:** This restores the default camera settings (Size, Brightness, Zoom, etc.).

### Note

In Take Photo mode, you can adjust the zoom scale by using the up/down navigation keys. The maximum zoom scale depends on the resolution as follows.

Resolution	Zoom scale
1280*960	x1
640*480	x1~x2
320*240	x1~x2
160*120	x1~x4

In Take Photo mode, you can adjust the brightness by using the left/right navigation key.

## Record Video

### MENU 8.2

You can record a video clip in this menu by pressing the Camera key. Before starting to record, press the right soft key [Options] to set the following values. Select the desired value and press the OK key to confirm.

- ▶ **Change to Photo Mode:** Go to the camera application which enables you to take a still picture.
- ▶ **Video Record Mode:** Sets the recording mode to either MMS Video Mode or General Mode.
- ▶ **Quality:** Determines the quality of a video clip.
- ▶ **Reverse View:** Allows you to reverse the image.

- ▶ **White Balance:** This adjusts the light effect level and you can select from the following options: Auto / Daylight / Incandescent / Cloudy / Fluorescent/ Night mode.
- ▶ **Color Effects:** Allows you to apply special effects to the video clip. Press the Left/Right Navigation Keys to find the tone you want to use from the following options: Color, Sepia, Mono and Negative.
- ▶ **Default Settings:** This restores the default camera settings (Size, Brightness, Zoom, etc.).

### Note

In Video Record mode, you can adjust the zoom scale by using the up/down navigation keys. The maximum zoom scale depends on the resolution as follows.

Resolution	Zoom scale
320*240	x1
176*144	x1~x10

In Record Video mode, you can adjust the brightness by using the left/right navigation keys.

## Record Voice

MENU 8.3

You can record an audio clip in this menu. The recorded audio file is saved automatically in the Sounds menu (Menu 2.3).

The right soft key [Options] will bring up the following options.

- ▶ **Record Mode:** Sets the recording mode to either MMS or General.
- ▶ **Quality:** Determines the quality of an audio clip.
- ▶ **Primary Storage:** You can set the primary storage of the recorded audio to the Handset Memory or the memory Card.

## Memory Status

MENU 8.4

### Common (Menu 8.4.1)

This function shows the status of the user memory of the mobile phone. Since this function scans the overall file system for statistics, a few seconds are required.

## Memory Card (Menu 8.4.2)

This function shows the status of the External card user memory. This function displays the In-use and free memory usage statistics.

## Profiles (for SAT USIM)

MENU 9.1

In case an SAT capable USIM card is in use Profiles is listed here and should provide the same features as described in chapter Profiles on pages 33-34.

## Date & Time

MENU 9.2

Although the current time is automatically configured when the phone is registered to the network, users can configure time and date directly using this menu. The time configured by user is valid only while the phone is turned on.

### Set Date (Menu 9.2.1)

This function allows you to set the date. After entering 'Day', 'Month', 'Year' using the number keys, press the Done key.

### Date Format (Menu 9.2.2)

Allows you to select the date format. Use the left/right navigation keys to change the format, and press the Done key.

### Set Time (Menu 9.2.3)

Allows you to set the time. Key in 'Hour', 'Minutes' using the number keys. You can select am/pm when you have selected '12 hour' as the Time Format.

### Time Format (Menu 9.2.4)

Allows you to select the time format. Use the left/right navigation keys to change the format, and press the Done key.

### Auto update (Menu 9.2.5)

When Auto Update is configured to On, the time and date are automatically updated according to the current time zone. If Confirm first is selected, time and date update is confirmed before the automatic update.

### Daylight saving (Menu 9.2.6)

Select whether to activate the daylight saving function or not. If the home city does not support daylight saving, Daylight saving can not be set to **On**.

## Phone Settings

MENU 9.3

### Language (Menu 9.3.1)

You can select the display language. When the language option is set to Automatic, the language is automatically selected according to the language of the USIM card used. English will be set if the language on the USIM card is not supported by the phone.

### Display (Menu 9.3.2)

In this menu, you can configure screen display options including LCD settings and theme.

#### *Wallpaper*

You can configure the Main LCD/ Front LCD background by theme selection.

#### **Main display**

You can select an Main display background to display in idle mode. You can also select the clock and calendar type to appear in idle mode. You can also configure the font size and colour of the clock displayed on the Main LCD idle screen.

#### **Front display**

You can select an Front display background to display in idle mode.

#### *Dialling font*

When number keys are pressed for call connection in idle state, the size and colour of displayed number can be configured.

#### *Colour theme*

You can choose the themes from Default, Metal, Sky and Orange.

#### *Backlight*

It allows the user to configure the backlight duration settings for Main display, Front display and Keypad. Default settings: Main display 10 secs, Front display 10 secs, Keypad 10 secs.

## Call Settings

### MENU 9.4

### Call divert (Menu 9.4.1)

Call divert menus for video, voice, data and fax calls are provided.

However, available menus are determined by the USIM supporting CPHS.

The menu consists of Video calls, Voice calls, Fax calls and Data calls.

The Video menu provides menus to divert video calls and the Voice menu provides menus to divert voice calls. The Video and Voice menus have the following submenus.

If you select Video calls, the All video calls, If busy, If no answer and If unreachable list appears.

If you select Voice calls, the All voice calls, If busy, If no answer and If unreachable list appears.

#### *Video calls*

#### All video calls

1. When the Deactivate menu is selected – Deletes Call Divert Number registered to the network.

While waiting for the result from the network, Requesting message and animation appears. When the network answers, the result of the operation is displayed.

2. When To a number is selected – A dialogue window appears allowing you to enter a phone number to divert to. Input a phone number to divert calls to, and press OK button. While waiting the result from the network, Requesting message and animation appears. When the network answers, the result of the operation is displayed.
3. When Input dial number (DN) is selected – A menu appears, a user selects To other number, and inputs a number. Divert registration is performed with the selected number. Select the number, and press the OK button. While waiting for the result from the network, a Requesting message and animation appears. When the network answers, the result of the operation is displayed.
4. Options menu – After activating the All video calls menu, selecting the Options menu at the bottom of the menus displays the Activate, Deactivate, Deactivate all, View status and clear list menus. Activate: Move to Settings menu (above 1~4) to

activate call divert. The View status menu shows the settings on the network. If you select this menu, Requesting, message and animation appear. Then the network settings are displayed when the information is received from the network. Selecting Status in the right soft menu gives the same result. If you select the Deactivate menu, the call divert numbers registered in the network are deleted after user confirmation. Selecting the Cancel all menu will display the operation result after showing the Requesting message and animation. Clear list menu will delete all divert number list.

## **If busy**

1. When the off menu is selected – It operates the same as All voice calls menu.
2. To other number is selected – It operates the same as All voice calls menu.
3. When input dial number (DN) is selected – It operates the same as All voice calls menu.
4. When Options menu is selected – It activates and operates If busy menu. It operates the same as All voice calls menu.

## **If no answer**

1. When the off menu is selected – It operates the same as All voice calls menu.
2. When To other number is selected – It operates the same as to All voice calls menu.
3. When input dial number (DN) is selected – It operates the same as All voice calls menu.
4. When Options menu is selected – Activates and operates If no reply menu. It operates the same as All voice calls menu except that users can configure delay time in the Set delay menu in the menu list.

## **If unreachable**

1. When off menu is selected – It operates the same as All voice calls menu.
2. When To other number is selected – It operates the same as All voice calls menu.
3. When input dial number (DN) is selected – It operates the same as All voice calls menu.
4. When Options menu is selected – Activates and operates If out of reach menu. It operates the same as All voice calls menu.

## Voice calls

### All voice calls

1. When the Deactivate menu is selected – Deletes Call Divert Number registered to the network. While waiting for the result from the network, Requesting message and animation appears. When the network answers, the result of the operation is displayed.
2. When the To voice mail centre is selected, it activates a Voicemail centre number as a diverted number. To register the VMS number, select Messages → Settings → Voice mail centre from the menu. If you select this menu when there is no registered number, the “VMS not activated” message appears. Selecting this menu when there is a registered number displays Requesting message and animation. When the network answers, the result of the operation is displayed.
3. When To a number is selected – A dialogue window appears allowing you to enter a phone number to divert to. Input a phone number to divert calls to, and press OK button. While waiting the result from the network, Requesting message and animation appears. When the network answers, the result of the operation is displayed.
4. When Input dial number (DN) is selected – A menu appears, a user selects To other number, and inputs a number. Divert registration is performed with the selected number. Select the number, and press the OK button. While waiting for the result from the network, a Requesting message and animation appears. When the network answers, the result of the operation is displayed.
5. After activating All voice calls menu, selecting the Options menu at the bottom of the menus displays the Activate, Deactivate, Deactivate all, View status and clear list menus.  
 Activate: Move to Settings menu to activate call divert.  
 The View status menu shows the settings on the network. If you select this menu, Requesting message and animation appear. Then the network settings are displayed when the information is received from the network. Selecting Status in the right soft menu gives the same result. If you select the Deactivate menu, the call divert numbers registered in the network are deleted after user confirmation. Selecting the Cancel all menu will display the operation result after showing the Requesting message and animation.  
 Clear list menu will delete all divert number list.



## Call waiting (Menu 9.4.2)

This menu consists of All calls, Video calls and Voice calls.

If you select one, activate/deactivate/view status menu list appears.

1. **Activate:** Activates waiting service. Selecting this item, displays requesting message and animation. When the network answers, the result of the operation is displayed.
2. **Deactivate:** Deactivates Call waiting service. Selecting this item displays requesting message and animation. When the network answers, the result of the operation is displayed.
3. **View status:** Displays activated Call waiting service group item of the network. Selecting this item displays requesting message and animation. When the network answers, the result of the operation is displayed.

## Call reject (Menu 9.4.3)

- ▶ **Automatic menu:** Users can configure to reject all or a specific number calls by selecting Deactivate, Reject on list, or Reject all calls menu. Selecting Deactivate disables Automatic call reject. Selecting

Reject on list rejects only reject target numbers in the list you set. After pressing the right soft key [Setup], you can set the reject list. Selecting Reject all calls rejects all arriving calls unconditionally by silent or disconnecting. When you configuring Reject on list mode, you can add number to reject by using 'List' menu. When you adding a number to the list, you can select either 'Silent', or 'Disconnect'. You can input number directly or by searching Contacts using 'Search' key.

- ▶ **Manual menu:** When On is selected, press and hold the side key for a while to reject a call by silence, and press and hold the side key for a while once again to reject a call by disconnecting. When Off is selected, side key does not work for call reject operation.

## Video call (Menu 9.4.4)

- ▶ **My Picture Size:** Select my image size to be displayed.
- ▶ **My Picture Position:** Select the position where your image will be displayed.
- ▶ **Hide My Picture:** Determine whether to display my picture on a main screen in VT calling or not.

- On: Do not display my picture on a calling screen.
- Off: Display my picture on a calling screen.
- ▶ **Reverse Camera:** Select to activate the mirror effect or not.
  - On: Displays the image flipped side to side.
  - Off: Displays the image as it is.
- ▶ **Substitute Picture:** Select the still image to be displayed.

## Send my number (Menu 9.4.5)

1. **Set by network:** Configures with the default settings determined by the service provider.
2. **On:** Configures to send my phone number when making an outgoing call.
3. **Off:** Configures not to send my phone number when making an outgoing call.

## Auto redial (Menu 9.4.6)

Allows you to set the auto redial function when a call attempt has failed.

## Answer mode (Menu 9.4.7)

Allows you to set the answering method. You can choose between opening the folder, pressing the Send key, and pressing any key.

## Minute reminder (Menu 9.4.8)

Determines whether to sound a 1 minute tone every 1 minute when you are on the phone.

## Connectivity

MENU 9.5

### Bluetooth (Menu 9.5.1)

#### *Bluetooth connection*

- Menu → 9. Settings → 5. Connectivity → 1. Bluetooth

Your phone has built-in Bluetooth wireless technology which makes it possible for you to connect your phone wirelessly to other Bluetooth devices such as a handsfree, PC, PDA, a remote screen, or other phones.

You can, for example, have a conversation via a cordless Bluetooth handsfree or browse the Internet, wirelessly connected via a mobile phone. You can

also exchange, for example, business cards, calendar items and pictures.

## Note

► We recommend that your phone and the Bluetooth device you are communicating with be within a range of 10 meters. The connection may be improved if there are no solid objects in between your phone and the other Bluetooth device.

## 1. Getting started

- Menu → 9. Settings → 5. Connectivity  
→ 1. Bluetooth → 1. Bluetooth On/Off

To use the Bluetooth function, you must first set Bluetooth to "On". Complete the above procedures to set Bluetooth to "On".

## 2. Configuring Bluetooth settings

- Menu → 9. Settings → 5. Connectivity  
→ 1. Bluetooth → 4. Bluetooth Settings
- Bluetooth: To use the Bluetooth function, set it to [On]. Otherwise, set it to [Off].
- My handset's visibility: Set [My handset's visibility

status] to [Shown to all] so that other devices can detect your phone when they are searching for a Bluetooth device. If you select [Hidden], other devices will not be able to detect your phone when they are searching for a Bluetooth device.

- My handset's name: You can name or rename your phone as it will appear on other devices. Your phone's name will be shown on other devices only when [My handset's visibility] is set to [Shown to All].
- My Address: This is the Bluetooth address of your device. This is set when you phone is sold. You cannot change the Bluetooth address.

## 3. Paired device

Pairing Devices(Pairing with a device)

If a paired Bluetooth audio device already exists.

- Menu → 9. Settings → 5. Connectivity  
→ 1. Bluetooth → 2. Device List  
→ Connect

If there is no paired Bluetooth device,

- Menu → 9. Settings → 5. Connectivity  
→ 1. Bluetooth → 2. Device List → New

- ▶ **New:** Using this menu, you can pair a new Bluetooth device with your phone.
- ▶ **Connect:** Using this menu, you can connect an audio device.
  1. This item is only enabled in the Option menu when you have selected Audio device. If another device has been selected, this item is disabled.
  2. Move to [Connect] and select [OK]. Your phone is immediately connected to the audio device.
- ▶ **Delete:** Using this menu, you can delete the paired Bluetooth device.
- ▶ **Rename:** You can rename a paired phone as required.
- ▶ **Delete all:** Using this menu, you can delete all of the paired Bluetooth devices.
  - To search for a Bluetooth device to connect, press the New key.
  - Screen shows "Searching for Device". Bluetooth devices within a range of 10m will be found.
  - If Bluetooth devices are found, these devices are listed on the screen. If no Bluetooth device is found, you will be asked if you want to search

again.

- If you select a device from the listed devices, the device information (name, address, service class) will appear on the screen.
- Pairing procedure
  - Select the device you wish to pair with from the discovered items, then press OK. A window will appear on the screen asking you to enter your password.
  - After creating a password (of 1 to 16 digits), the user of the other device must enter the password for pairing. The user of the other device must know the password in advance for authentication.
  - If the other party authenticates the connection, the Paired device list is displayed on the screen and you can use your phone to communicate with the other device.

#### <Disconnecting devices>

1. Select a device to disconnect from the Paired devices screen.
2. You can disconnect a device by pressing the Delete key or by selecting Options → Delete. To

disconnect all paired devices, select Options → Delete All.

## <Transmitting data using Bluetooth>

1. To transmit data from your phone to another Bluetooth device, first select the application where the target data is saved. For example, to send data in the Media album to another device, select
  - Menu → 2. My Media → 1. Images → Select data to transmit → Send via → 3. Bluetooth
2. Transmitting data
  - If a paired Bluetooth device exists,
    - 1) Select the desired device from the paired devices listed on the screen.
    - 2) If the other party selects [Yes] for [Bluetooth Authorisation required], the data is transmitted.
  - If there is no paired Bluetooth device,
    - 1) Select Search to search for nearby Bluetooth devices to connect.
    - 2) Select the device to which you want to transmit data from the devices on the screen and press the Push key.

- 3) If the other party selects [Yes] for [Bluetooth Authorisation required], the data is transmitted.

## <Receiving data using Bluetooth>

Menu → 9. Settings → 5. Connectivity → 1. Bluetooth → 2. Device List

1. If you enable Bluetooth function as described above, you can connect your phone to other Bluetooth devices.
2. If another party attempts to transmit data, the [Bluetooth Authorisation required] question will appear on the screen. If you select [Yes], the data will be transmitted to your phone. During data transmission, the Bluetooth icon flashes.

## <Bluetooth data storage folder>

You can check the received data by selecting Menu → 2. My Media → 6. Bluetooth data.

## 4. Device

### <Connecting a headset>

1. Select Menu → 9. Settings → 5. Connectivity → 1. Bluetooth
2. Connect the headset according to the procedures described in the Pairing Devices section.

3. To use the headset, select the headset from the registered devices, press the OK key [Connect].

#### <Connecting a handsfree kit>

1. Menu → 9. Settings → 5. Connectivity → 1. Bluetooth
2. Connect the handsfree kit according to the procedures described in the Pairing Devices section.
3. To use the handsfree kit, select the handsfree kit from the registered devices, then press the OK key [Connect].

*The **Bluetooth®** word mark and logos are owned by the Bluetooth SIG, Inc. and any use of such marks by LG Electronics is under license. Other trademarks and trade names are those of their respective owners.*

#### Note

TU500 does not support IrDA port.

## USB Connection Mode (Menu 9.5.2)

Select the desired USB connection mode.

## Network settings (Menu 9.5.3)

### Network selection

1. You can select either Automatic or Manual network selection.
2. If you select Automatic, connection continues according to the Automatic network selection procedures. This setting is recommended for best service and quality.
3. If you select Manual, all the currently 2G (GSM) and 3G (UMTS) available networks are shown, and you can select one of them for registration. If the registration of the network has failed, then all the currently available networks are listed again, and you can select any other one for registration.

### Preferred lists

1. Select Preferred lists to display the preferred list saved in the current USIM card.

2. You can edit and save a preferred list in the USIM card by selecting the menu when the preferred list is displayed.

- ▶ **Add new:** You can add a new network using the followings.
  - Search: You can select one from the network list stored in the phone.
  - Enter new network: You can enter the country code (MCC) and the network code (MNC) to add. After setting, press "Done" key.
- ▶ **Delete:** Deletes the selected network.
- ▶ **Move up:** Moves the selected network upward.
- ▶ **Move down:** Moves the selected network downward.

## Access points (Menu 9.5.4)

### Access points

This menu shows the access point list. You can create new profiles, delete or edit them by using the Option Menu. However, you cannot delete or edit default configurations.

You can edit the following configuration items by selecting the right soft key.

Connection title	Access Point profile name.
Bearer	Choose the bearer from the list. (Default is "UMTS/GPRS")
Authentication	Choose the authentication from the list. (Default is "No auth")
User name	Information provided by service provider.
Password	Information provided by service provider.
APN	APN name to access network. Information provided by service provider.
Traffic class	Traffic Class Choose the Traffic Class from the list. (Default is "Subscribed")
Req. max UL bitrate	Choose the Maximum Uplink Bitrate from the list. (Default is "Subscribed")
Reliability class	Choose the Reliability class from the list. (Default is "Subscribed")
DNS server	Choose the DNS server from the list. (Default is "Automatic")
Req. max DL bitrate	Choose the Maximum Downlink Bitrate from the list. (Default is "Subscribed")

Dial-up number	Required in case of Bearer is "UMTS/GPRS/CSD" or "CSD" Information provided by service provider.
Baud rate	Required in case of Bearer is "UMTS/GPRS/CSD" or "CSD" Choose the value from select list. (Default is "9600")
Call type	Required in case of Bearer is "UMTS/GPRS/CSD" or "CSD" Choose Call type from the list. (Default is "ISDN")
CSD username	Required in case of Bearer is "UMTS/GPRS/CSD" or "CSD" Information provided by Service Provider.
CSD password	Required in case of Bearer is "UMTS/GPRS/CSD" or "CSD" Information provided by Service Provider.

- ▶ Press **"Done"** key to save any configuration changes.

## Streaming (Menu 9.5.5)

Here you can set the Streaming port range and the APN used for accessing Streaming content.

## Dial Up Networking (Menu 9.5.6)

You can use your phone with a variety of PC connectivity and data communications applications. Select USB or Bluetooth as the connection method.

## PDP Settings (Menu 9.5.7)

These settings determine the Packet Data behaviour of your handset. You should check with your Carrier before changing from the default settings.

### ▶ PDP Connection

- When Needed: Packet Data connection will activate when needed (Example: when accessing WAP, MMS or Email)
- Always ON: Packet Data connection will always be active.

### ▶ APN

- Determines the Account that is Always On. This is the Active internet account.

- ▶ **Multiple PDP Support:** This determines whether the handset will allow simultaneous data connections.



- 2G & 3G: Simultaneous Packet Data connections are allowed in both 2G & 3G networks.
- 2G Only: Simultaneous Packet Data connections is only allowed in 2G networks.
- 3G Only: Simultaneous Packet Data connections is only allowed in 3G networks.
- None: Simultaneous Packet Data connections is not allowed in any network.

## Security

MENU 9.6

You can activate a PIN code. When it is activated, a window asking you to enter the PIN code appears when you turn on the phone so as to prevent unauthorized use of the phone.

### Lock Handset (Menu 9.6.1)

You can lock your mobile phone to prevent it being used by other people. The following 4 lock functions are provided.

- Power On: Whenever the mobile phone is turned on.
- If USIM Changed: When the mobile phone's USIM card has been changed.

- Immediate: Locks the phone immediately.
- Off: Cancels lock function.

### PIN code request (Menu 9.6.2)

You can activate a PIN (Personal Identification Number). You can check the current status of configuration from the status bar.

PIN request and release procedures

Item	Description
Enable PIN Request	You have to input the PIN code each time the mobile phone is turned on.
Disable PIN Request	You do not have to input the PIN code when the mobile phone is turned on.

1. Select 'PIN Code Request' item from the list, and press [Select]. Then a window allowing you to select 'On' or 'Off' appears.
  - Select 'On'/'Off' from the list, press [Select], and input the current PIN code to set the PIN request. If 'PIN Code Request' is already enabled/disabled, an "Already activated"/"Already cancelled" message will be displayed.
2. 3 incorrect PIN code entries in the PIN code input window would invalidate the PIN code. In this case,

you have to input the PUK (PIN Unblock Key) code to configure the PIN code again.

3. The maximum allowed number of attempts of PUK input is 10 times. ATTENTION: after having entered 10 times an incorrect PUK code, the USIM card will be blocked and must be replaced.

Press the C key in the PIN code input window to return to the previous step.

## Change Codes (Menu 9.6.3)

You can change the Security Code, PIN and PIN2 codes.

### *PIN code*

PIN is the abbreviation of Personal Identification Number, and is used to restrict the use of an unauthenticated user.

### **PIN code change procedure**

1. Select 'PIN code' from the 'Change password' list and then press [OK].
2. Input the current PIN code, and press [OK].
3. Input the new PIN code, and press [OK].
4. Input the new PIN code once again, and press [OK].

- If the PIN code is different from that of step 3, the procedure is restarted from step 3.
5. When the PIN code is properly changed, a "PIN changed" message is displayed. With an incorrect PIN code input in step 2, the procedure is restarted from step 2, and the remaining allowed number of input attempts is decreased by 1.
  6. Press the C key in the PIN code input window to return to the previous step.

### **Note**

Three incorrect PIN code entries in the PIN code input window would invalidate the PIN code. In this case, you have to input the PUK (PIN Unblock Key) code to configure the PIN code again. The maximum allowed number of attempts of PUK code input is 10 times. ATTENTION: after having entered 10 times an incorrect PUK code, the USIM card will be blocked and must be replaced.

### *PIN2 code*

PIN2 is the abbreviation of Personal Identification Number 2, and is used to restrict the use of unauthenticated users like PIN. The PIN2 code

change procedure is the same as the one for the PIN code. 3 incorrect PIN2 code entries would invalidate the PIN2 code. In this case, you have to input the PUK2 code in order to use the PIN2 code again. The maximum allowed number of attempts of PUK2 code input is 10 times, like PUK1. 10 incorrect PUK2 code entries would invalidate the PIN2 code.

## *Security code*

The security code is used to change the mobile phone password. The maximum allowed number of attempts of security code input is not limited like PIN and PIN2.

## Memory Status

MENU 9.7

This function shows the usage of the memory of the mobile phone that can be used to save user data. User data is saved in a FLASH memory, a type of nonvolatile memory, keeping saved data permanently unless the data are deleted by user.

## Common memory (Menu 9.7.1)

This function shows the status of the common memory. The function takes few seconds to load the contents. The usual contents are related to Photos, Pictures, Sounds, Music, Games & more, Videos, Bluetooth data. It gives the size in terms of Kilobytes for each item in the common memory.

## Reserved memory (Menu 9.7.2)

This function shows the status of the reserved memory. The usual contents are Text messages, Contacts, Calendar, To Do, Memo and It gives a clear illustration of the actual number to the total number of count of each item.

## USIM memory (Menu 9.7.3)

This function shows the status of the USIM card user memory.

## External memory (Menu 9.7.4)

This function shows the status of the External card user memory. This function displays the In-use and free memory usage statistics.

## Handset Information

MENU 9.8

This functions shows the USIM card telephone number, model name and software version of the mobile phone.

## Internet

MENU 9.9


### BigPond (Menu 9.9.1)

You can launch the web browser and access the homepage of the web service provided by Telstra.

- ▶ You can also directly access BigPond by pressing the right soft key in idle mode.

#### Note

Please note that this service is service provider dependent.



You can access any website page by entering its URL address. To exit the browser at any time, press the  key. The phone will return to the standby mode.

## Navigating with the WAP browser

You can surf the Internet using either the phone keys or the WAP browser menu.

### Using the phone keys

When surfing the Internet, you can use the following keys.

Key	Description
Up/Down navigation keys	Scrolls each line of the content area.
	Returns to the previous page.
	Selects options and confirms actions.

### Using the WAP browser menu

Browser menu is seen once the WAP page is displayed. On selecting “Menu” from the left soft menu of browser, various options are provided and these are as follows:

Back	Returns to the previous page.
Forward	Goes to the next page, if you navigated to previous pages.
Reload	Reloads the current page.
Home	Goes back to the homepage. (configured in current default setting)
Go to URL	A desired URL can be entered here to visit.
Bookmarks	You can add or save the current page to the Bookmark or view the list saved under Bookmark.
Settings	You can set the Browser related options such as Character encoding, Scrolling control, Show image, Cache, Cookie, Clear cache, Clear cookie, Certificate, Session info and Page info.

## Bookmarks (Menu 9.9.2)

You can store frequently accessed or favourite URLs/Pages. Several preconfigured URLs are stored as bookmarks.

### Adding a new bookmark

1. Press the right soft key [Options] and select **New**.
2. Enter the title and associated URL information.

3. Press the left soft key [Done] to save.

## Connecting to a desired bookmark

Press the OK key [Connect].

## Sending the bookmark to others

Press the right soft key [Options] and select **Send URL**. You can send it via Message.

## Deleting a bookmark

Select Delete from Options menu. Preconfigured URLs cannot be deleted.


## Saved Pages (Menu 9.9.3)

The phone can save the page on display as an offline file. Up to 20 pages can be saved.

## Go to URL (Menu 9.9.4)

### Enter URL

You can manually enter a URL address and access the associated web page.

- ▶ To enter a symbol, press or the right soft key [Options] and select **Insert Symbols** to display the Symbol table.
- ▶ To switch input mode, press  .

## Recent Pages

Shows the recently-browsed pages.

## Security (Menu 9.9.5)

### Certificates

If stored, a list of root/ca certificates required for WTLS/TLS can be found here.

Certificates can be viewed from the list.

### Clear Session

Secure (WTLS/TLS) session data can be cleared using this option. Session data should be cleared to establish a new secure session.

## Settings (Menu 9.9.6)

### Accounts

You can create or configure an Internet account.

## Adding a new account

1. Select New from the Options menu.

The following items need to be configured.

Account Name	Enter an account name.
Homepage	Enter
Connection Mode	Choose from the given list of connection modes.
Proxy Address	Enter the Proxy address.
Proxy Port Number	Port details are provided by the operator, depending upon the connection mode.
Security	Select the desired security option.
Time Out(10-600s)	Key in the number of appropriate time length for the time-out from 10 to 600 seconds.
Network Profiles	Select the network profile.

2. Press the left soft key [Done] to save any configuration changes.

You can edit and delete a profile by selecting Edit and Delete from the Options menu.

## Activating an account

After selecting the profile you would like to activate, press the left soft key [Activate].

## Cache Settings

**Clear Cache:** Select this to clear all caches.

**Allow Cache:** Decide whether to allow the “Cache” function [On] or not [Off].

## Cookie Settings

**Delete Cookies:** Select this to clear all cookies.

**Allow Cookies:** Decide whether to allow the “Cookie” function [On] or not [Off].

## Character Encoding

Sets the browser default character set to one of the following:

Automatic, English(ASCII), English(ISO), English(LATIN), Unicode(UCS2 BE), Unicode(UCS2 LE), Unicode(UCS2 Auto), Unicode(UTF-16 BE), Unicode(UTF-16 LE), Unicode(UTF-16 Auto), Unicode(UTF-8).

## Scrolling Control

Allows you to set the scroll speed by selecting the number of lines to scroll. (1 line, 2 lines, 3 lines)

## Show image

Allows you to enable or disable the image display during browsing.

### Note

Enabling this function will delay displaying images until the completion of transmission.

Disabling this function will prevent the browser from downloading images from the server, thus allowing faster transmission.

## Reset Settings

MENU 9.0

It resets the handset memory and Default settings brings all the phone settings to its default values.

In Clear memory “Handset Contents” will reset Java, Bookmarks, Saved Internet pages, Recent Internet pages, Videos and Audios. “Handset personal info” will reset Contacts, Messages, Diary, Alarms, Calls. No USIM memory option. “External memory” will reset the external memory.



# Troubleshooting

Please check to see if any problem which you may have with your phone is described here before taking it for service or calling a service engineer.


**Q** How do I view the list of outgoing calls, incoming calls and missed calls?

**A** Press .

**Q** How do I clear all call history?

**A** Press the OK soft key and then  -  - Options - Clear list.

**Q**  does not disappear from the screen.

**A** Check whether you are in a service area. If you continue to see , turn off the power and wait for approximately 2 minutes before turning it back on. If there is no change, relocate to another area and check again.

**Q** Connection is poor or is not audible in certain areas.

**A** In certain areas, signal strength can vary dramatically.  
Try moving to a different location. Heavy network

traffic may affect the ability to connect, or the stability of the call.

**Q** Connection is poor even when established.

**A** In certain areas, signal strength can vary dramatically.  
Try moving to a different location. Heavy network traffic may affect the ability to connect, or the stability of the call.

**Q** LCD does not turn on.


**A** Remove and replace the battery and turn on the power. If the phone still does not turn on, charge the battery and try again.

**Q** An echo can be heard during connection with a certain telephone in a certain area.

**A** It is called 'Echo Phenomenon'. It occurs if the volume is too high or caused by special properties (semi electronic telephone exchange) of the machine on the other end.



# Troubleshooting

- Q** The phone gets warm.
- A** During long calls, or if games/Internet are used for a long time, the phone may become hot. This is perfectly normal and has no effect upon the life of the product or performance.
- Q** The bell does not ring, or lamp or LCD blinks only.
- A** The phone is set to 'Vibrate' or 'Silent' in the Profiles menu. Please select 'General' or 'outdoor'
- Q** Standby duration of the phone gradually becomes shorter.
- A** Batteries have a limited life. When the battery lasts for half its original time, it requires replacement. Only use authorised replacement parts.
- Q** Usage time of battery becomes shorter.
- A** If the battery time is short, it may be due to the user environment, or large volume of calls, or weak signals.
- Q** No number is dialled when you recall a phonebook entry.
- A** Check that the numbers have been saved correctly, by using the phonebook Search feature. Resave them, if necessary.
- Q** You cannot be contacted.
- A** Is your phone switched on (  pressed for more than three seconds)? Are you accessing the right cellular network? Have you set an incoming call barring option?
- Q** Cannot find Security, PIN or PUK codes?
- A** The default Security Code is '0000'. If you forget or lose the Security code, contact your phone dealer. If you forget or lose a PIN or PUK code, or if you have not received such a code, contact your network service provider.

There are a variety of accessories available for your mobile phone. You can select these according to your personal communication requirements. Consult your local dealer for availability.

## AC Adapter (supplied in basic kit)

This adapter lets you charge the mobile phone while at home or in the office.



## Battery (supplied in basic kit)

Standard battery is available.



## Stereo Headset (supplied in basic kit)

Allows hands-free operation. Includes earpiece and microphone.



## Data Kit (supplied in basic kit)

The Data Kit consists in a USB Data Cable and a CD-ROM, it allows you to connect your phone to a PC.

On the CD-Rom, there are programs like:

- PC-Sync: to synchronise phonebook with PC and Outlook.
- Phone Manager: to download wallpapers, ringtones and video clips on the phone.
- Internet Kit: to use the phone as a modem to be connected to a PC.

\* When installing, make sure to connect to the PC after your phone and the cable have been connected. Otherwise, your PC may cause a problem.



### Note

The programs listed above may vary depending on the version of the CD and the market.

### Note

- ▶ Always use genuine LG accessories. Failure to do this may invalidate your warranty.
- ▶ Accessories may be different in different regions; please check with our regional service company or agent for further enquiries.

# Declaration of Conformity



LG Electronics

## Suppliers Details

Name

**LG Electronics Inc**

Address

LG Electronics Inc, LG Twin Towers 20,  
Yeouido-dong, Yeongdeungpo-gu, Seoul, Korea 150-721

## Product Details

Product Name

**E-GSM 900 / GSM 850 / GSM 1800 / GSM 1900 / W-CDMA Terminal Equipment**

Model Name

**TU500**

Trade Name

**LG**

# C E 0889

## Applicable Standards Details

**R&TTE Directive 1999/5/EC**

**ETSI EN 301 489-01 V1.5.1, ETSI EN 301 489-07 V1.2.1**

**ETSI EN 301 489-17 V1.2.1, ETSI EN 301 489-24 V1.2.1**

**ETSI TS 151 010-1 V5.9.0 specified by ETSI EN 301 511 V9.0.2**

**ETSI TS 134 121 V5.5.0 specified by ETSI EN 301 908-2 V2.2.1**

**ETSI EN 301 908-1 V2.2.1, ETSI EN 300 328 V1.4.1**

**EN 50360:2001; EN 50361:2001**

**EN 60960 : 2001**

## Supplementary Information

## Declaration

I hereby declare under our sole responsibility  
that the product mentioned above to which this  
declaration relates complies with the above mentioned  
standards and Directives

Name

Issued Date

Jin Seog, Kim / Director 15. Aug. 2006.

LG Electronics Inc, Amsterdam Office  
Veluwezoom15, 1327 AE Almere, The Netherlands  
Tel : +31 - 36- 547 - 8940, e-mail : seokim @ lge.com

Signature of representative