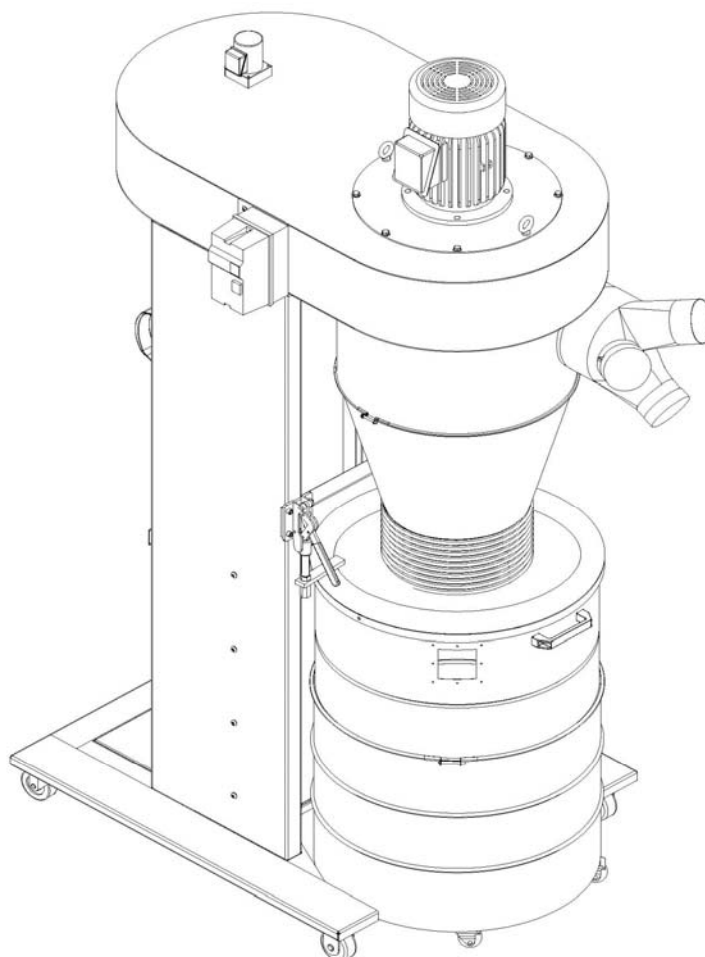


LAGUNA

OPERATION MAUNAL

3 HP Dust Cyclone (MDC0680-0145)



WARNING :

The Operator must thoroughly Read and understand this Manual before operating the Dust collector or commencing Any servicing. Care should be Taken to follow all safety rules And warning instructions.

CAUTION



Read and understand operator's manual before using this machine. Failure to follow operating instructions could result in death or serious injury.



Loud noise hazard.
Ear protection is required when operating this machine.



Flying objects hazard.
Eye protection is required when operating this machine.



Respiratory hazard.
Wear approved respirator in this area.

READ THIS MANUAL CAREFULLY BEFORE ASSEMBLY, TESTING & OPERATING

REVISION 2 – JUNE 02/2011

CONTENTS

IMPORTANT SAFETY RULES-----	2
IMPORTANT SAFETY RULES FOR DUST COLLECTORS-----	3
GROUNDING INSTRUCTIONS-----	4
SPECIFICATIONS-----	5
UNPACKING CONTENTS-----	6
HARDWARE PACKAGE-----	7
ASSEMBLY INSTRUCTION-----	8
EXPLODED DIAGRAM-----	10
PARTS LIST-----	11

- **WARNING!**

Please read this manual carefully before assembly, testing and operating.

- **WARNING!**

Do not operate this unit until hose or pipe is installed onto the dust inlet port.

- **WARNING!**

This machine is for woodworking machinery use only, and prohibited from other purpose.

IMPORTANT SAFETY RULES

Wood working can be dangerous if safe and proper operating procedures are not followed. As with all machinery, there are certain hazards involved with the operation of the product. Using the machine with respect and caution will considerably lessen the possibility of personal injury. However, if normal safety precautions are overlooked or ignored, personal injury to the operator may result.

Safety equipment such as guards, push sticks, hold-downs, featherboards, goggles, dust masks and hearing protection can reduce your potential for injury. But even the best guard won't make up for poor judgment, carelessness or inattention. Always use common sense and exercise caution in the workshop. If a procedure feels dangerous, don't try it. Figure out an alternative procedure that feels safer. REMEMBER: Your personal safety is your responsibility.

WARNING: FAILURE TO FOLLOW THESE RULES MAY RESULT IN SERIOUS PERSONAL INJURY

1. **FOR YOUR OWN SAFETY, READ INSTRUCTION MANUAL BEFORE OPERATING THE TOOL.** Learn the tool's application and limitations as well as the specific hazards peculiar to it.
2. **KEEP GUARDS IN PLACE** and in working order
3. **ALWAYS WEAR EYE PROTECTION**
4. **GROUND ALL TOOLS.** If tool is equipped with three-prong plug, it should be plugged into a three-hole electrical receptacle. If an adapter is used to accommodate a two-prong receptacle, the adapter plug must be attached to a known ground. Never remove the third prong.
5. **REMOVE ADJUSTING KEYS AND WRENCHES.** Form habit of checking to see that keys and adjusting wrenches are removed from tool before turning it "ON".
6. **KEEP WORK AREA CLEAN.** Cluttered areas and benches invite accidents.
7. **DON'T USE IN DANGEROUS ENVIRONMENT.** Don't use power tools in damp or wet locations, or expose them to rain. Keep work area well lighted.
8. **KEEP CHILDREN AND VISITORS AWAY.** All children and visitors should be kept a safe distance from work area.
9. **MAKE WORKSHOP CHILDPROOF** – with padlocks, master switches, or by removing starter keys.
10. **DON'T FORCE TOOL.** It will do the job better and be safer at the rate for which it was designed.
11. **USE RIGHT TOOL.** Don't force tool or attachment to do a job for which it was not designed.
12. **WEAR PROPER APPAREL.** No loose clothing, gloves, neck-ties, rings, bracelets, or other jewelry to get caught in moving parts. Non-slip footwear is recommended. Wear protective hair covering to contain long hair.
13. **ALWAYS USE SAFETY GLASSES.** Wear safety glasses. Everyday eyeglasses only have impact resistant lenses; they are not safety glasses. Also use face or dust mask if cutting operation is dusty.
14. **SECURE WORK.** Use clamps or a vise to hold work when practical. It's safer than using your hand and frees both hands to operate tool.
15. **DON'T OVERREACH.** Keep proper footing and balance at all times.
16. **MAINTAIN TOOLS IN TOP CONDITION.** Keep tools sharp and clean for best and safest performance. Follow instructions for lubricating and changing accessories.
17. **DISCONNECT TOOLS** before servicing and when changing accessories such as blades, bits, cutters, etc.
18. **USE RECOMMENDED ACCESSORIES.** The use of accessories and attachments not recommended by us may cause hazards or risk of injury to persons.
19. **REDUCE THE RISK OF UNINTENTIONAL STARTING.** Make sure switch is in "OFF" position before plugging in power cord.
20. **NEVER STAND ON TOOL.** Serious injury could occur if the tool is tipped or if the cutting tool is accidentally contacted.
21. **CHECK DAMAGED PARTS.** Before further use of the tool, a guard or other part that is damaged should be carefully checked to ensure that it will operate properly and perform its intended function – check for alignment of moving parts, binding of moving parts, breakage of parts, mounting, and any other conditions that may affect its operation. A guard or other part that is damaged should be properly repaired or replaced.
22. **DIRECTION OF FEED.** Feed work into a blade or cutter against the direction of rotation of the blade or cutter only.
23. **NEVER LEAVE TOOL RUNNING UNATTENDED. TURN POWER OFF.** Don't leave tool until it comes to a complete stop.
24. **DRUGS, ALCOHOL, MEDICATION.** Do not operate tool while under the influence of drugs, alcohol or any medication.
25. **MAKES SURE TOOL IS DISCONNECTED FROM POWER SUPPLY** while motor is being mounted, connected or reconnected.
26. **WARNING:** The dust generated by certain woods and wood products can be injurious to your health. Always operate machinery in well ventilated areas and provide for proper dust removal. Use wood dust collection systems whenever possible.

IMPORTANT SAFETY RULES FOR DUST COLLECTORS

WARNING: Basic precautions should always be followed when using your dust collector. To reduce the risk of injury, electrical shock or fire, comply with the safety rules listed below:

1. READ and understand the instruction manual before operating the dust collector.
2. DO NOT leave the dust collector plugged into the electrical outlet. Unplug dust collector from outlet when not in use and before servicing, changing bags, unclogging and cleaning.
3. ALWAYS turn the power switch "OFF" before unplugging the dust collector.
4. WARNING: TO REDUCE THE RISK OF ELECTRICAL SHOCK do not use outdoors or on wet surfaces. Use for dry pickup only!
5. FOLLOW all electrical and safety codes, including the National Electric Code (NEC) and the Occupational Safety and Health Regulations (OSHA). All electrical connections and wiring should be made by qualified personnel only.
6. DO NOT use the dust collector to pick up flammable or combustible liquids, such as gasoline. NEVER use the dust collector near any flammable or combustible liquids.
7. USE the dust collector to pick up wood materials only. DO NOT use the dust collector to pick up metal shavings, dust, water, or parts.
8. NEVER use the dust collector to dissipate fumes or smoke. NEVER pick-up anything that is burning or smoking, such as cigarettes, matches or hot ashes.
9. USE only as described in this manual.
10. DO NOT pull the dust collector by the power cord. NEVER allow the power cord to come in contact with sharp edges, hot surfaces, oil or grease.
11. DO NOT unplug the dust collector by pulling on the power cord. ALWAYS grasp the plug, not the cord.
12. DO NOT handle the plug or dust collector with wet hands.
13. REPLACE a damaged cord immediately. DO NOT use a damaged cord or plug. If the dust collector is not operating properly, or has been damaged, left outdoors or has been in contact with water, return it to an Authorized Service Center for service.
14. DO NOT use the dust collector as a toy. DO NOT use near or around children.
15. DO NOT insert fingers or foreign objects into the dust intake ports. Keep hair, loose clothing, fingers, and all body parts away from openings and moving parts of the dust collector.
16. DO NOT use the dust collector without a filter bag and dust collection bag in place and properly secured.
17. DO NOT operate the dust collector with unused dust intake ports uncapped. ALWAYS cover exposed dust intake ports.
18. PERIODICALLY INSPECT dust and filter bags for any cuts, rips or tears. NEVER operate the dust collector with a damaged bag or vacuum hose.
19. The dust collector is designed for home use or light commercial duty ONLY!
20. CONNECT dust collector to a properly grounded outlet only. See Grounding Instructions.

SAVE THESE INSTRUCTIONS

GROUNDING INSTRUCTIONS

The appliance must be grounded, if it should malfunction or breakdown, grounding provides a path of least resistance for electric current to reduce the risk of electric shock. This appliance is equipped with a cord having equipment-ground conductor and grounding plug. The plug must be inserted into an appropriate outlet that is properly installed and grounded in accordance with all local codes and ordinances.

WARNING – Improper connection of the equipment-grounding conductor can result in a risk of electric shock. Check with a qualified electrician or service person if you are in doubt as to whether the outlet is properly grounded. Do not modify the plug provided with the appliance – if it will not fit the outlet; have a proper outlet installed by a qualified electrician.

For grounded, cord-connected appliances:

This appliance is for use on a circuit having a normal rating more than 120 volt and is factory-equipped with a specific electric cord and plug to permit connection to a proper electric circuit. Make sure that the appliance is connected to an outlet having the same configuration as the plug. No adaptor should be used with this appliance. If the appliance must be reconnected for use on a different type of electric circuit, qualified service personnel should make the reconnection.

For a permanently connected appliance:

This appliance must be connected to a grounded metal, permanent wiring system; or an equipment-grounding conductor must be run with the circuit conductors and connected to the equipment grounding terminal or lead on the appliance.

Specifications:

Motor----- 3HP/220V/60Hz/ 1 Phase

AMP----- 18 A

Motor Speed----- 3450 RPM

Suction Capacity----- 2300 CFM

Static Pressure----- 16.2 Inch H2O

Impeller Size----- 15.8”

Inlet Size----- 8”

Switch----- Magnetic Switch

Overall Dimensions of Base----- 1200 x 880 x 2150 mm

N.W. BOX 1. ----- 139 KGS

BOX 2. ----- 40.5 KGS

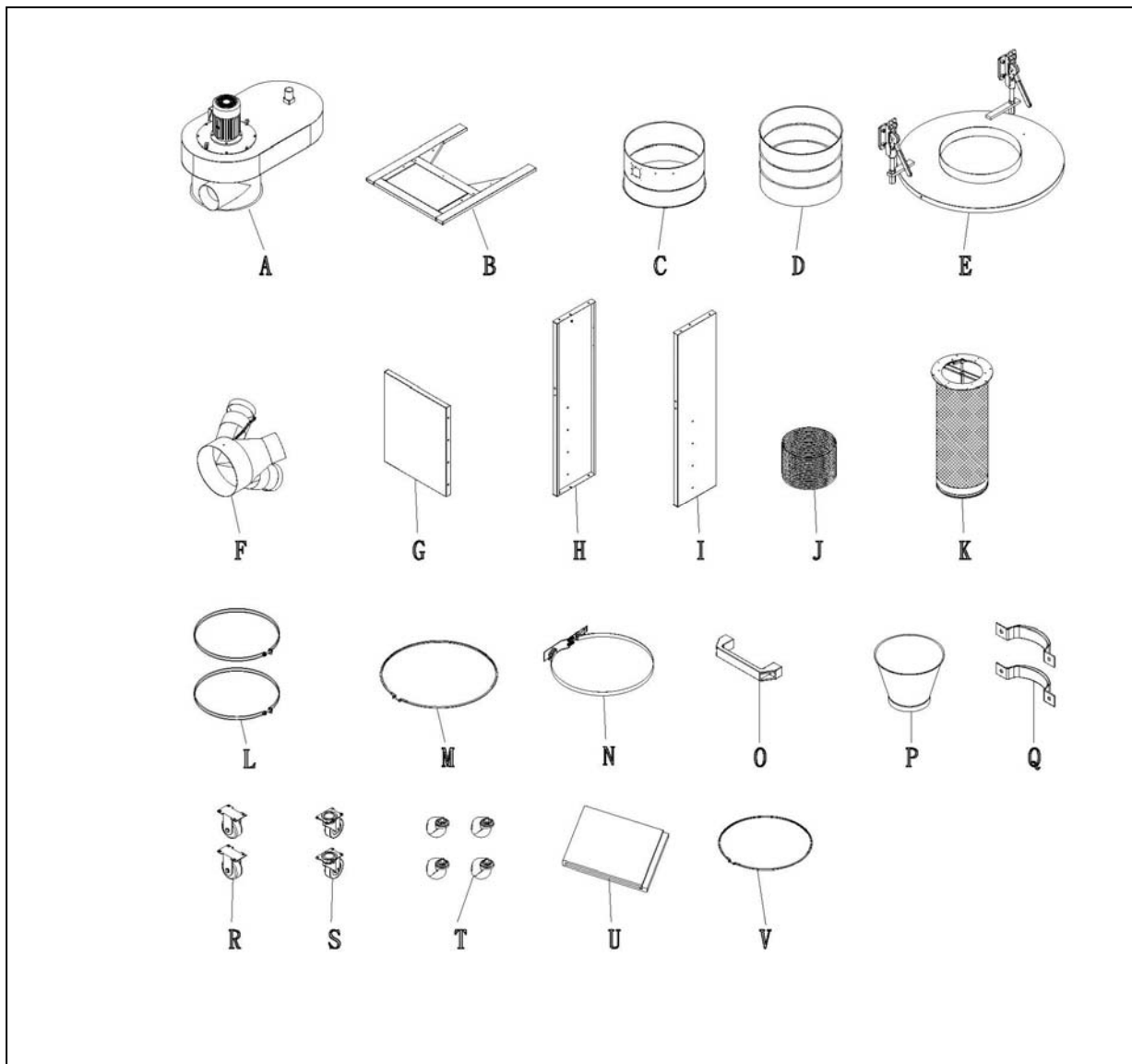
G.W. BOX 1. ----- 158 KGS

BOX 2. ----- 45.5 KGS

CUFT- BOX 1. ----- 33.2’

BOX 2. ----- 12.8’

UNPACKING & CHECKING CONTENTS:



A : Main Housing

B : Base

C : Upper Drum

D : Lower Drum

E : Drum Lid

F : Y-Inlet

G : Fixing Board

H : Left Stand Board

I : Right Stand Board

J : Hose

K : Canister Filter

L : Hose Clamp

M : Cone Clamp

N : Bag Clamp

O : Drum Handle

P : Reducing Housing

Q : Handle

R : Fixing Wheel

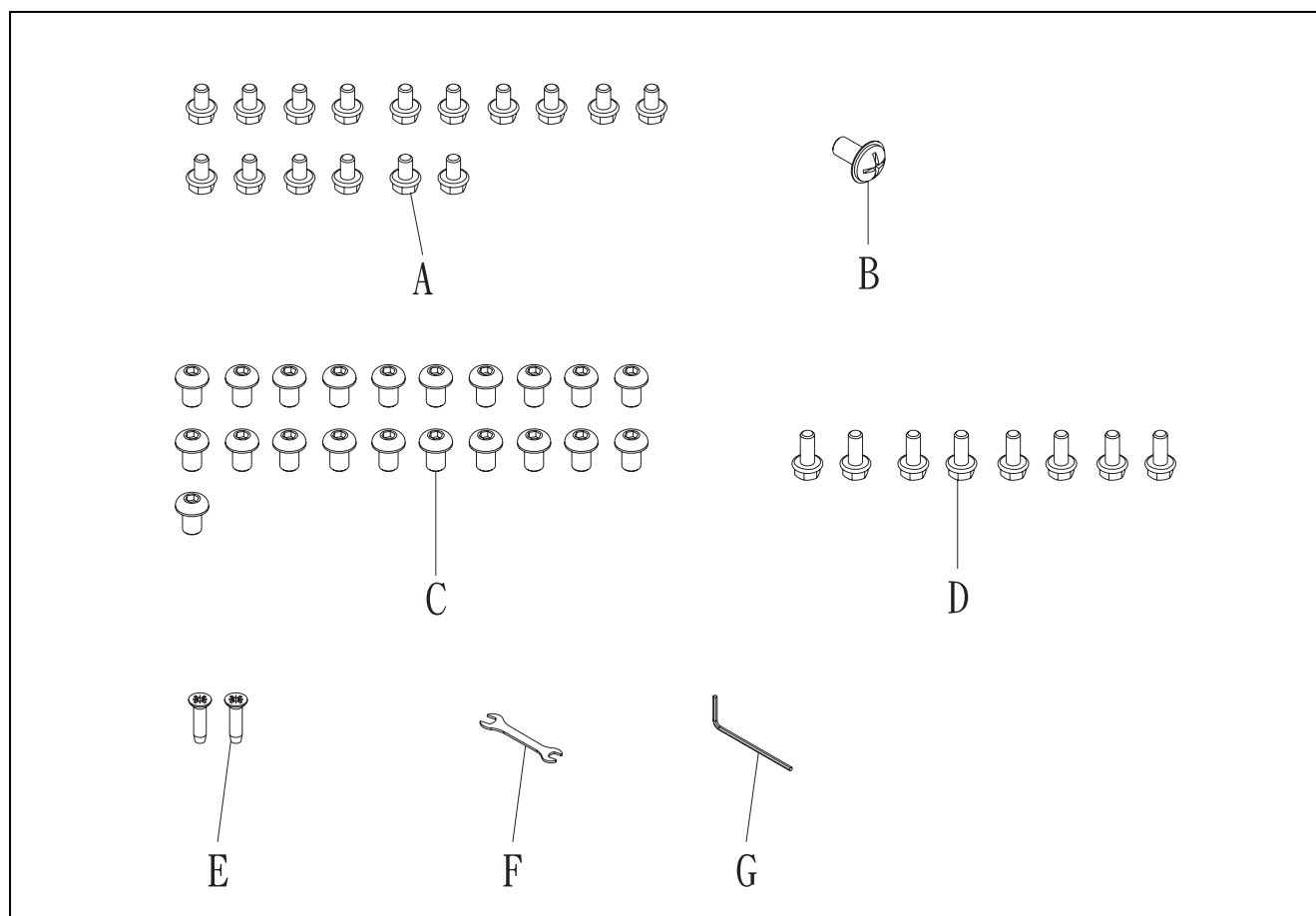
S : Movable Wheel

T : Wheel

U : Plastic Bag

V : Drum Clamp

Hardware package:



NO.	<u>Description</u>	<u>Specification</u>	Q'TY	Part List No.
A	Flange Bolt	5/16''*1/2''	16	NO.47
B	Phillips Head Screw	3/16''*3/8''	1	NO.40
C	Button Head Screw	5/16''*1/2''	21	NO.47
D	Flange Bolt	5/16''*3/4''	8	NO.53
E	Flat Head Screw	1/4''*5/8''	2	NO.57
F	Open Wrench	10*12	1	NO.63
G	Allen Wrench	5mm	1	NO.83

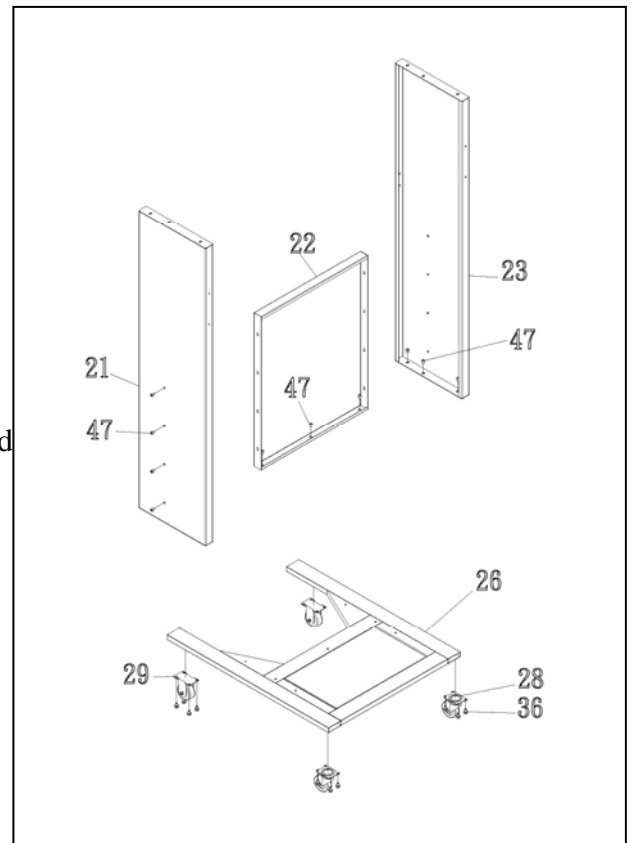
ASSEMBLY INSTRUCTION

STEP1-1.

Place the base (NO.26) and fixing wheel (NO.29)
movable wheel (NO.28) under the base and
tight with flange bolts (NO.36)
See (FIG.1)

STEP1-2.

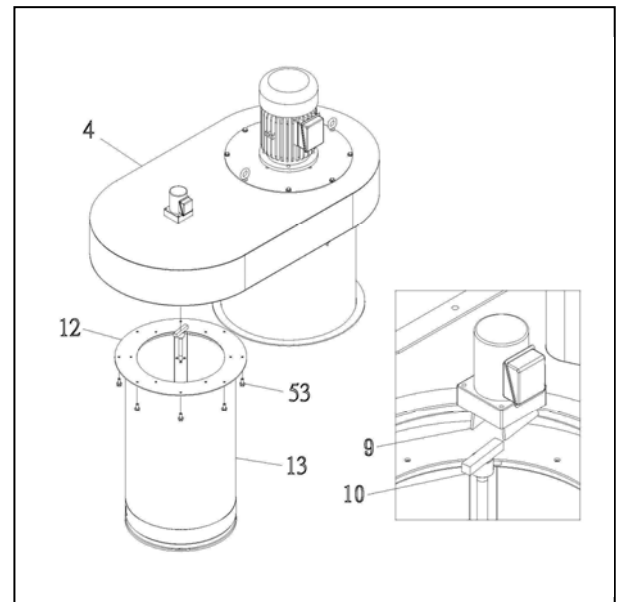
Place the left stand board (NO.21) right stand board
(NO.23) and fixing board (NO.22) on the base and
tight with button head screws. (NO.47)
See (FIG.1)



(FIG.1)

STEP2.

Assemble the canister filter (NO.13), on the
main housing and place the rod (NO.10) into the
rod kit (NO.9). Tight the canister filter with
flange bolts (NO.53) on the main housing.
See (FIG. 2)



(FIG.2)

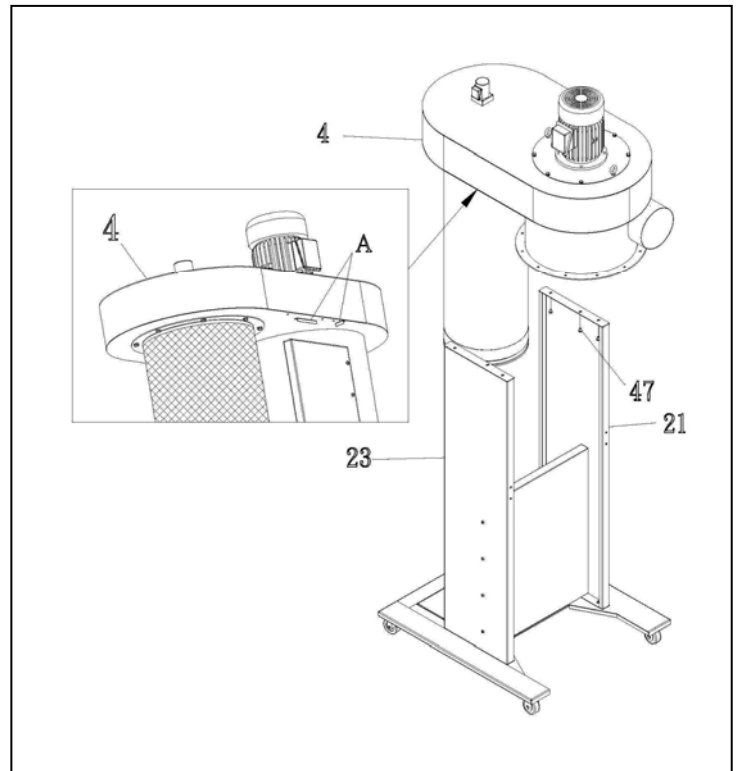
STEP3.

Please have 4 people lift up the main housing (NO.4) then place on the left stand board (NO.21) and right stand board (NO.23) against to A. Using the button head screws (NO.60) to tight together.

See (FIG. 3)

CAUTION!!!

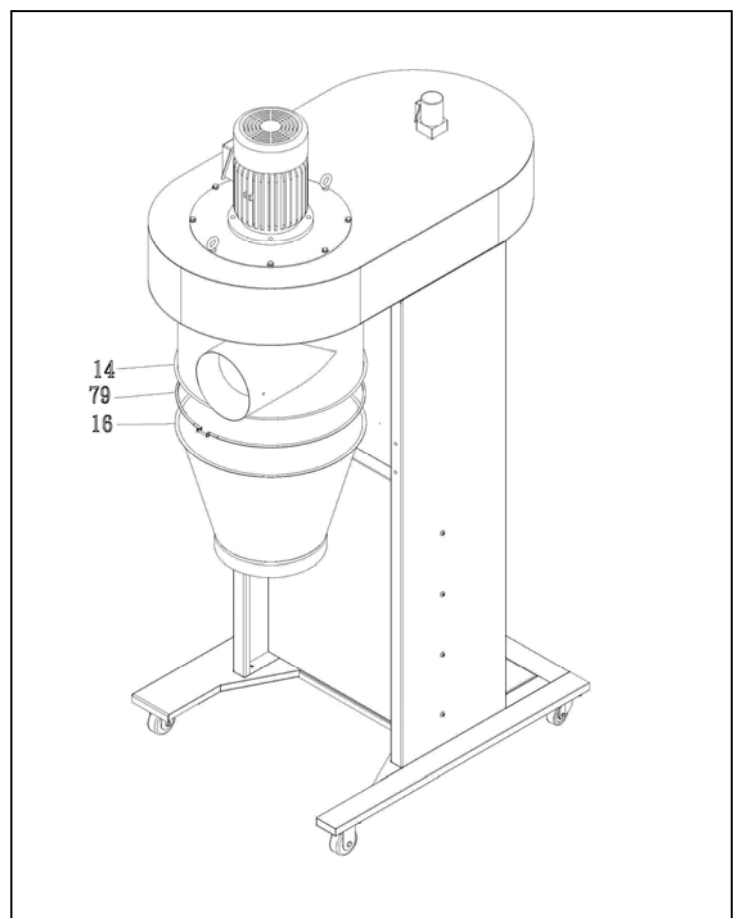
**The main housing set is heavy,
please have at least 4 people
work together when lifting**



(FIG.3)

STEP4.

Place the housing (NO.14) and reducing housing (NO.16) and secure with cone clamp (NO.79).



(FIG.4)

STEP5-1.

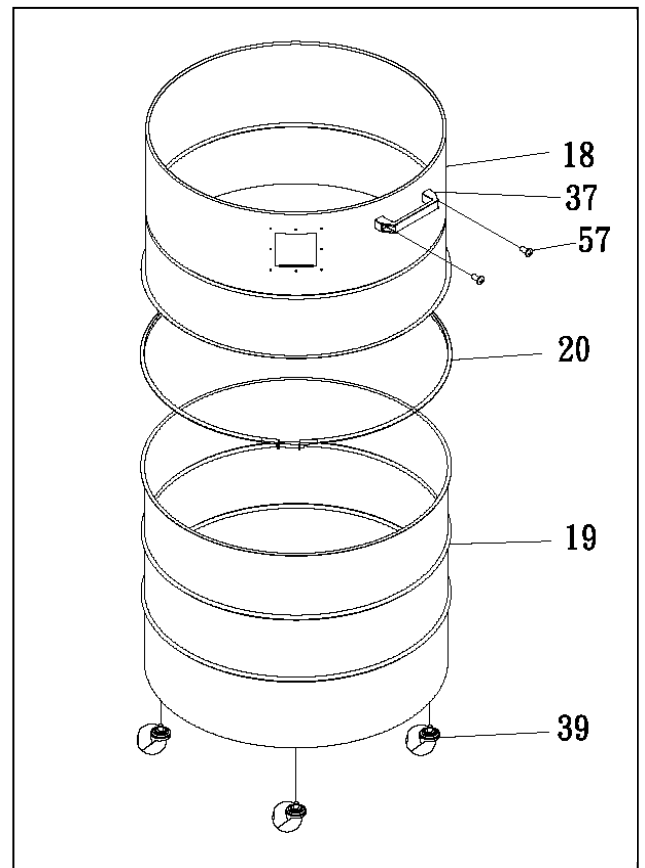
Assemble the upper collecting drum NO.18) and Lower collecting drum (NO.19) together then tight with drum clamp. (NO.20)

STEP5-2.

Tight the wheels (NO.39) under the collecting drum (NO.19) into the thread nuts.

STEP5-3.

Tight the drum handle (NO.37) on the drum with flat head screws. (NO.57)
See (FIG. 5)



(FIG.5)

STEP6-1.

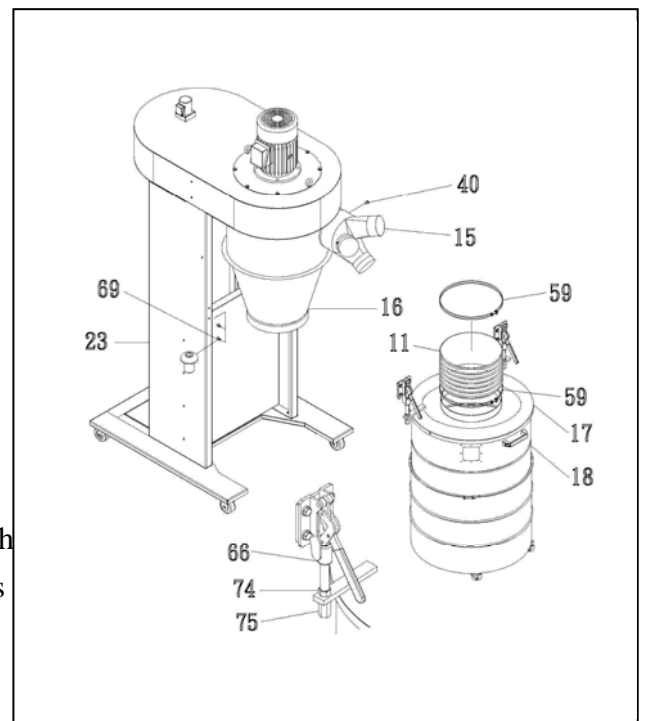
Insert the Y-inlet (NO.15) on the inlet of the housing and tight with Phillips head screw. (NO.40)

STEP6-2

Tight the hose clamps (NO.59) and hose (NO.11) on the button of the reducing housing and the top of the drum lid. Then tight the screws on the hose clamps.

STEP6-3

Tight the quick handle fixing board on the stand with button head screws. (NO.69) By adjusting the nuts (NO.74 & NO.75) to make the quick handle lift up the drum lid smoothly.
See (FIG. 6)



(FIG6)

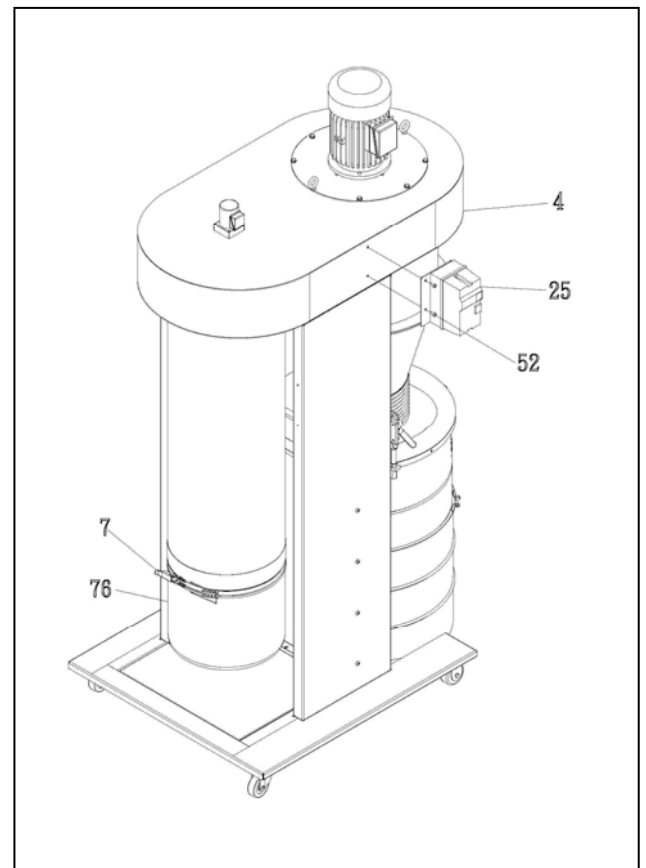
STEP7-1.

Unscrew the two flat head screws (NO.52) on the housing (NO.4) then place the switch (NO.25) with fixing plate on the housing and tight with the two flat head screws.

STEP7-2.

Assemble the lower plastic bag (NO.76) under the canister filter with bag clamp. (NO.66)

See (FIG. 7)



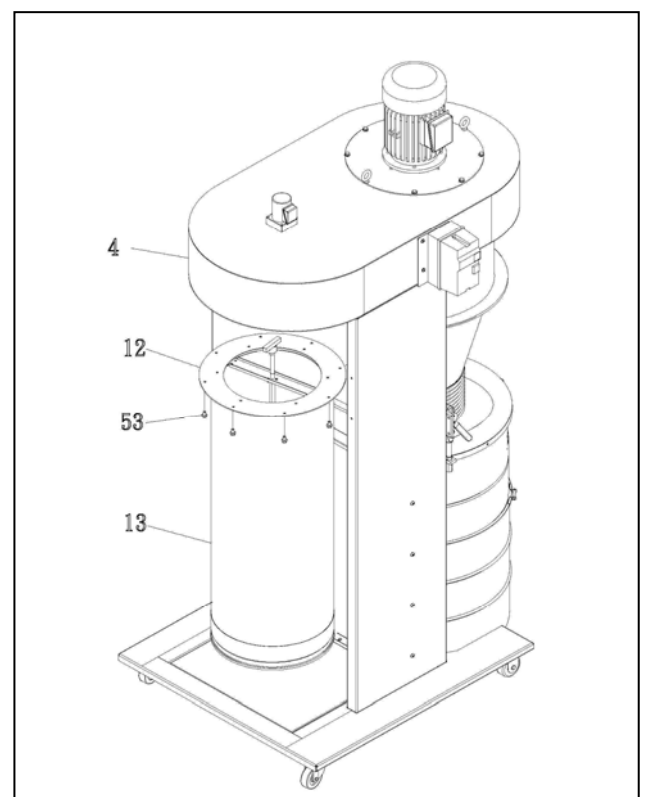
(FIG.7)

STEP8.

Assemble the handles (NO.73) on the both stands with button head screws. (NO.47)

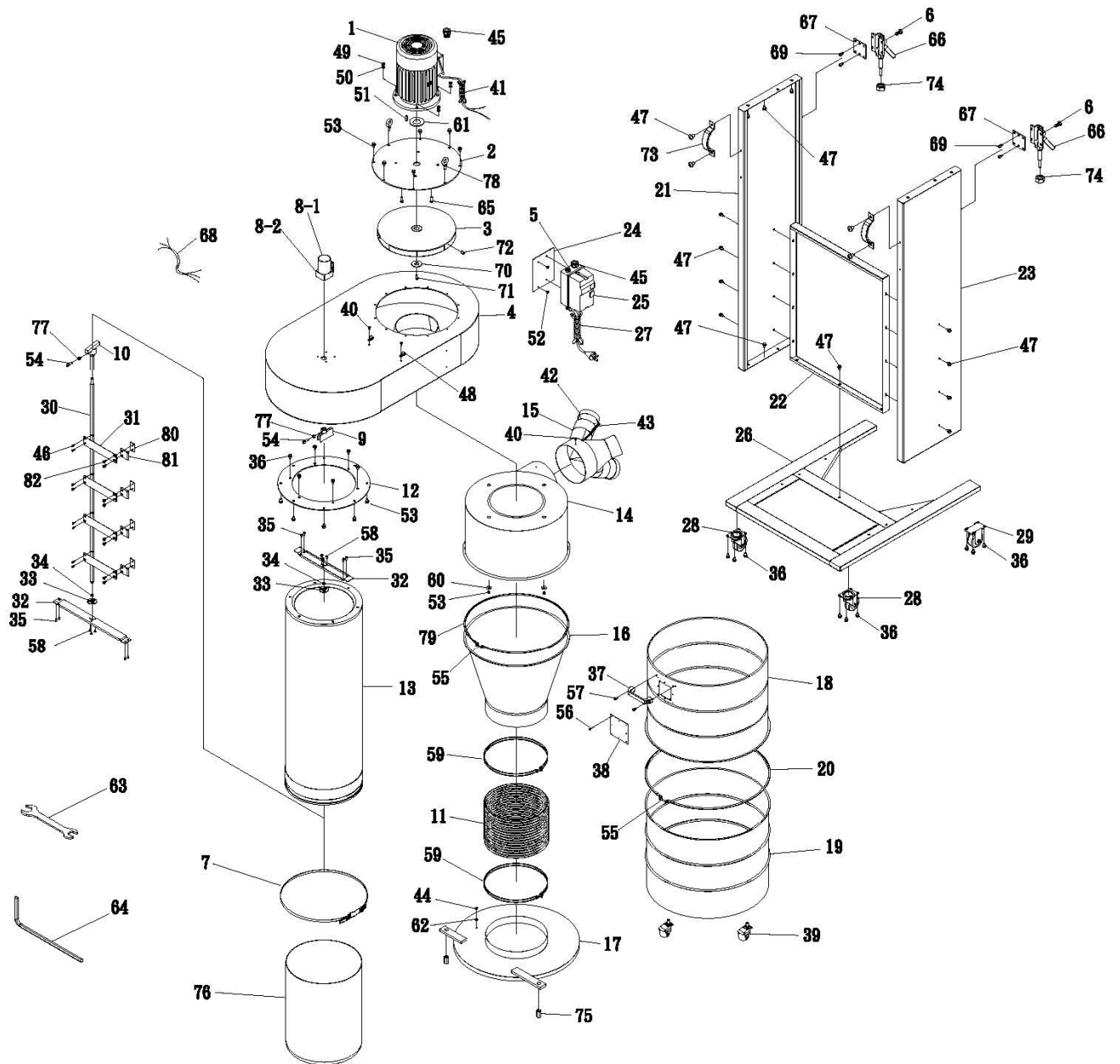
See (FIG. 8)

All the assemble steps are completed.



(FIG.8)

Exploded Diagram:



Part List

NO.	<u>Description</u>	<u>Specification</u>	Q'TY
1	Motor	3HP	1
2	Motor Plate		1
3	Impeller	15.8"	1
4	Main Housing		1
5	Pushing	MP-16	1
6	Phillips Head Screw	M5*8	8
7	Reducer Plate		1
8-1	Motor	3IK15GN-C	1
8-2	Reducer	1:90 3GN90	1
9	Rod Kit		1
10	Rod		1
11	Hose	12"*200	1
12	Canister Fixing Plate		1
13	Canister Filter	370*1000	1
14	Housing		1
15	Y-Inlet	8"*4"	1
16	Reducing Hosing		1
17	Drum Lid		1
18	Upper Collecting Drum		1
19	Lower Colleting Drum		1
20	Drum Clamp		1
21	Left Stand Board		1
22	Fixing Board		1
23	Right Stand Board		1
24	Switch Plate		1
25	Magnetic Switch	MP-30	1
26	Base		1
27	Power Cord	12AG*3C*12'	1
28	Movable Wheel	3"	2
29	Fixing Wheel	3"	2
30	Spindle		1
31	Flapper Arm		4
32	Lower Fixing Plate		2
33	Ball Bearing Fixing Plate		2
34	Ball Bearing	1206	2
35	Phillips Head Screw	M5*10	8
36	Flange Bolt	5/16"*1/2"	22
37	Drum Handle	130	1
38	PC Board		1
39	Wheel	2"	4
40	Phillips Head Screw	3/16"*3/8"	3
41	Motor Cord	12AG*3C*69cm	1
42	Cap	4"	2

43	Chain		2
44	Grounding Copper Screw	3/16"×3/8"	1
45	Bushing	MP-20	3
46	Flange Bolts	M5*10	8
47	Button Head Screw	5/16"×1/2"	25
48	Wire Clip	UC4	2
49	Nut	5/16"	4
50	Spring Washer	5/16"	4
51	Key	7*7*25	1
52	Phillips Head Screw	1/4"×5/8"	2
53	Tooth Washer	5/16"	2
54	Phillips Head Screw	M5*12	2
55	Phillips Head Screw	1/4"×2-1/2"	2
56	Rivet	4-2	8
57	Flat Head Screw	1/4"×5/8"	2
58	Button Head Screw	M5*6	6
59	Hose Clamp	12-1/2"	2
60	Washer	5/16"×23mm	4
61	Motor Packing		1
62	Tooth Washer	3/16"	2
63	Open Wrench	10*12	1
64	Connecting Wire	M5	1
65	Hex Head Screw	5/16"×1"	4
66	Quick Handle		2
67	Quick Handle Fixing Board		2
68	Connecting Wire	18AG*3C*80cm	1
69	Button Head Screw	5/16"×1/2"	4
70	Impeller Washer		1
71	Cap Screw	M6*20	1
72	Set Screw	3/8"×3/4"	1
73	Handle		2
74	Nut	3/8"	2
75	Long Nut	1/2"	2
76	Plastic bag		1
77	Nut	M5	2
78	Tooth Washer	5/16"	2
79	Clamp	MP-16	1
80	Fixing Plate		4
81	Flapper		4
82	Phillips Head Screw	M5*8	8