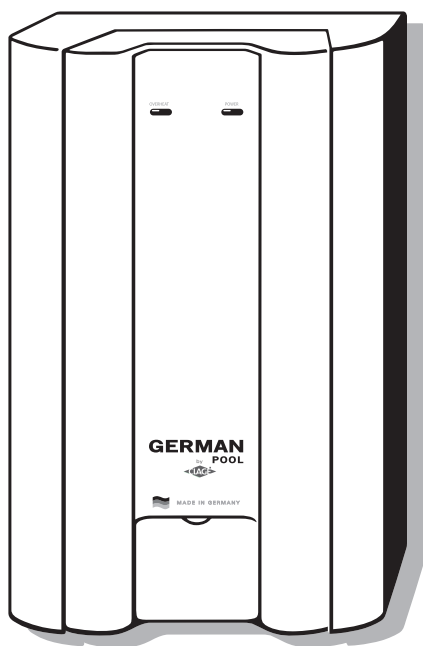


**GERMAN**  
by **POOL**  
CLAGE

**德国宝即热式电热水器**  
*Instantaneous Water Heater*

**CRH9**

水压控制型 *Hydraulic Control*



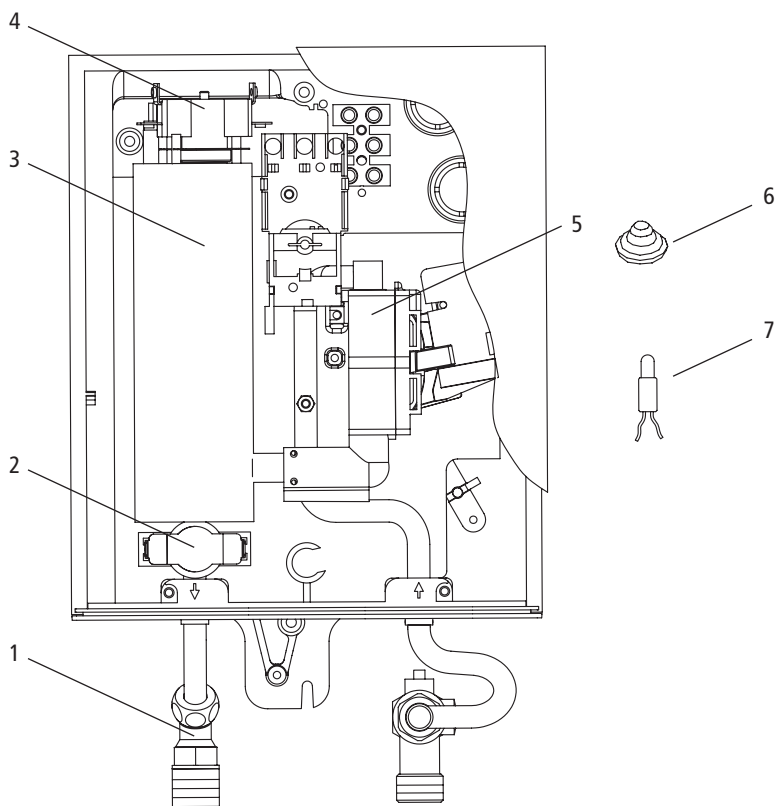
在使用之前请详细阅读「使用说明书」及「保用条例」，并妥为保存。  
Please read these instructions and warranty information  
carefully before use and keep them handy for future reference.



**使用说明书 OPERATING INSTRUCTIONS**

## 1. Overview

### Layout of appliance



#### Pos. Description

- 1 Brass connection set with back flow prevention in hot water outlet
- 2 Temperature monitor
- 3 Heating element
- 4 Safety thermal cut out

#### Pos. Description

- 5 Differential pressure switch
- 6 Cable seal
- 7 Pilot lamp

not shown: set of small spareparts

**When ordering spare parts, please always specify the appliance model, nominal rating and serial number!**

## 2. Table of contents

1 Overview .....	2
2 Table of contents .....	3
3 Technical specifications .....	3
4 Operating instructions .....	4–6
5 Customer service .....	7
6 Installation .....	8–13
7 Notes .....	14
8 Warranty Terms and Conditions .....	15

**CN** 中文使用說明書從第 14 頁開始 – Chinese manual starts on page 14.



**Operating Instructions:**  
Please read these instructions carefully before using the appliance!

## 3. Technical specifications

Type	CRH 9
Capacity	0.2 litre
Pressure-type, rating pressure	6 bar
Heating system	Tubular heater
Nominal rating	8.0 kW / 220V
Rated voltage (50/60 Hz)	1/N/PE ~ 220..230V
Rated current at 220V	36.4A
Min. required conductor cross-section	3 × 6.0 mm <sup>2</sup>
Factory preset flow reducer	5.0 l/min
Increase of temperature $\Delta t$ at present flow	23 K
Hot water temperature at 20 °C inlet temp.	43 °C
Switch-on flow rate	2 l/min
Useful for cold water up to	30 °C
Water connection	½" B.S.P. surface-mounted or flush-mounted
Net weight and dimensions (H × W × D)	2.2 kg / 33 × 21 × 9 cm
Protection class and type of protection to VDE	1 / IP25
Safety mark	see type plate



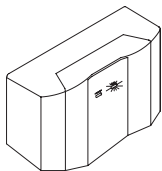
## 4. Operation instructions

### Safety instructions for closed-outlet water heaters:

- Installation, initial operation and maintenance of this appliance must only be conducted by an authorised professional, who will then be responsible for adherence to applicable standards and installation regulations. We assume no liability for any damages caused by failure to observe these instructions.
- Do not use the appliance until it has been correctly installed and unless it is in perfect working order.
- The appliance is only suitable for domestic use and similar applications inside closed, frost-free rooms, and must only be used to heat incoming water from mains supply.
- The appliance must never be exposed to frost.
- The appliance must be earthed at all times.
- The maximum water pressure must not exceed the value on the label.
- Before commissioning for the first time and each time the appliance is emptied (e.g. due to work on the plumbing system, if there is a risk of freezing or in case of maintenance), the appliance must be vented correctly in accordance with the instructions in this manual.
- Do not remove the front cover under any circumstances before switching off the mains electrical supply to the unit.
- Never make technical modifications, either to the appliance itself or the electrical leads and water pipes.
- Pay attention to the fact that water temperatures in excess of approx. 43 °C are perceived as hot, especially by children, and may cause a feeling of burning. Please note that the fittings and taps may be very hot when the appliance has been in use for some time.
- Water inlet temperature must not exceed 30 °C.
- In case of malfunction, disconnect the fuses immediately. In case of leaks, cut off the cold water supply instantly. Repairs must only be carried out by the customer service department or an authorised professional.
- This appliance must not be used by any person (including children) with limited physical, sensorial or mental abilities or failing experience and/or knowledge unless they are supervised by a person responsible for their safety or received instructions about how to use the appliance. Children should be supervised in order to make sure that they do not play with the appliance.



## 4. Operation instructions



### Description of appliance

This appliance is a pressure-type, hydraulically controlled instantaneous water heater for decentral water heating at one or two taps situated in close proximity to one another. e.g. kitchen sink or wash basin.

Due to the integrated load-shedding circuit, this appliance can be connected to the outlet box of an electric cooker if a separate power supply is not available and provided that the cooker is connected to a 3/N/PE~380/400 V supply.

### Use

The instantaneous water heater heats the water as it flows through the appliance. The appliance only consumes power during this period. The heating power is switched on automatically in the event of the minimum flow rate being exceeded. The „Power“ light indicates that the heating system is switched on.

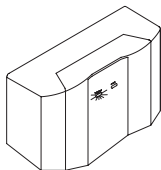
If the instantaneous water heater has been connected in combination with an electric cooker, the cooker will switch off while hot water is being withdrawn. Load shedding may only be used in conjunction with electromechanical cookers! Residual heat indicators are off while hot water is withdrawn!

The temperature of the hot water depends on the rate of flow and the temperature of the main water supply. By opening the tap more or less you can adjust the desired water temperature between approx. 40 °C and 60 °C:

**less flow = more hot**

**more flow = less hot**

If the heater supplies two outlets the water from the unit will be shared between the outlets. Therefore you should use only one outlet at the time to have a sufficient flow and to avoid variation in temperature.



### Temperature monitor

If the temperature rises too high, the temperature monitor will reduce the power supply until the water has cooled back to the permissible level. This is indicated by the „Overheat“ light. If the water overheats frequently, the cause of the fault must be remedied and may be due, for example, to dirt in the filter, an excessive reduction in the rate of flow or an impermissibly high inflow temperature.

### Venting

To prevent damage to the appliance, the instantaneous water heater must be vented before using it for the first time. Each time it is emptied (e.g. after work on the plumbing system, if there is a risk of frost or following repair work), the appliance must be re-vented before it is used again.

- 1 Disconnect appliance from the mains by removing the fuses.
- 2 Next, open and close the hot water tap valve several times until no more air emerges from the pipe and all air has been eliminated from the water heater (approx. 1 minute).
- 3 Only then should you re-connect the power supply to the unit.

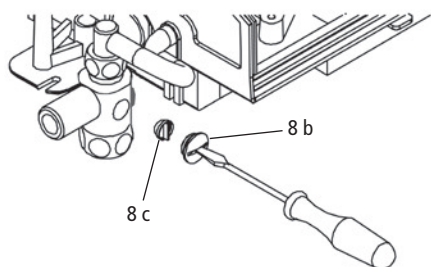
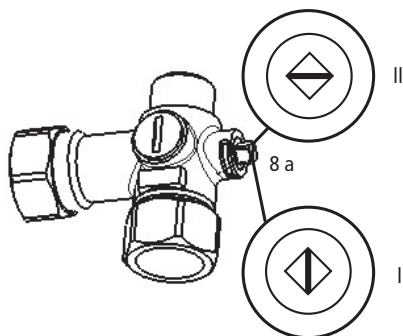
### How to save energy in order to protect the environment

The heat lost via the water pipes is very low when installed directly alongside the pipes leading to the taps (open-outlet taps are recommended) and the hot water is rapidly supplied without drawing a great deal of cold water first.

### Cleaning the filter

In case of malfunctions, the filter within the cold water inlet should be inspected and cleaned if necessary.

## 4. Operation instructions



### Cleaning the fine filter (flush-mounted)

The fine filter is located in the water connection (8) and should be examined by an expert and cleaned if necessary not only when operation of the appliance deteriorates, but also in conjunction with regular servicing.

1. Disconnect the instantaneous water heater by means of the house fuses and close the shut-off valve (8 a) in the cold water connection piece (position II) or shut-off the mains supply.
2. Unscrew the screw plug (8 b) from the cold water connection piece and take out the strainer (8 c).

#### **Attention: Residual water comes out!**

3. The strainer can be cleaned or replaced.
4. After fixtur of the strainer tighten the screw plug.
5. Slowly open the shut-off valve in the cold water connection piece (position I).
6. Vent the unit by carefully opening and closing the affiliated warm water tap valve several times until air no longer emerges from the pipe.

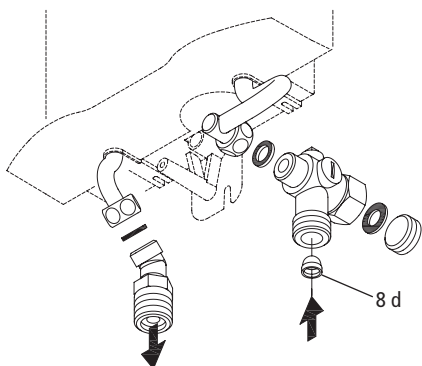
### Cleaning the fine filter (surface-mounted)

The fine filter is located in the water connection (8) and should be examined by an expert and cleaned if necessary not only when operation of the appliance deteriorates, but also in conjunction with regular servicing.

1. Disconnect the instantaneous water heater by means of the house fuses and shut-off the main water supply.
2. Unscrew the cold water inlet connection of the unit and take out the strainer (8 d) of the connection piece.

#### **Attention: Residual water comes out!**

3. The strainer can be cleaned or replaced.
4. After fixture of the strainer remount the water connection of the unit.
5. Carefully open the main water supply.
6. Vent the unit by carefully opening and closing the affiliated warm water tap valve several times until air no longer emerges from the pipe.



## 5. Customer service

If you experience a malfunction, please try to rectify the fault yourself first with the help of this table. If a fault in your appliance cannot be rectified with the aid of this table, please contact German Pool who will either assist you directly or put you in touch with a customer service contract partner in your area.

Always specify the appliance model and serial number, please!

Problem	Possible Cause	Solution
LED remains off, water remains cold	Circuit breaker tripped	Have the fault rectified and reset
The pilot lamp „Power“ lights, water remains cold	Heating element or electronics faulty	Reset fuse, water remains cold contact customer service
	Safety thermal cut-out tripped	Reset. In case of repeated trips contact customer service
The pilot lamp „Pressure“ lights, water remains cold	Flow rate too low	Increase flow pressure Clean tap fitting or shower head
Water flows lower as expected	Depends on the heater	Check technical specifications
	Outlet fitting dirty or calcified	Clean tap fitting or shower head
	Filter dirty or calcified	Clean or renew the filter
	Tap not suitable	Use suitable shower head or aerator
The hot water is not hot enough	Electronic board	Reset fuse
	Flow rate is too high (winter?)	Reduce the water flow slightly
	Heating element defect	Contact customer service
Temperature and pressure vary	Cold water is being added	Only hot water can be delivered to within one degree

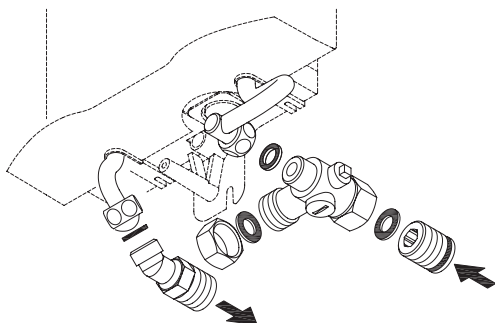
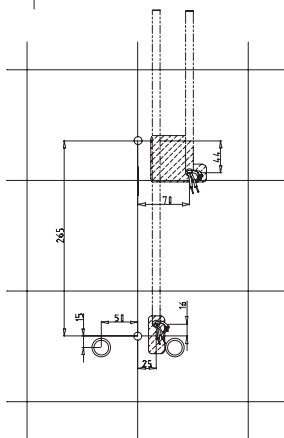
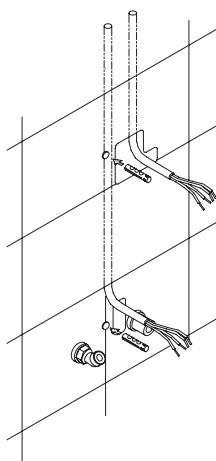
If you cannot rectify the fault with the aid of this table, please contact your distributor or German Pool Customer Service – China Headquarters.

Repairs may only be carried out by authorized professionals!

We can either give you the name and address of an authorised customer service company or repair the heater ourselves. In the latter case, please send in the heater (at your cost and risk) with details of the problem and a copy of the sales invoice.

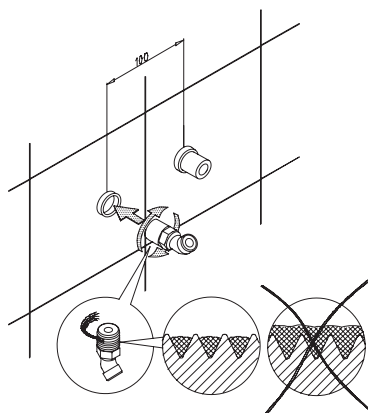
## 6. Installation

If you install the instantaneous water heater CRH 9 instead of a conventional instantaneous water heater, there is generally no need to drill holes for the wall holder. In this case, you only need to screw in the double nipples as described in 2. and to secure the wall bracket.



### Installing the wall bracket (flush-mounted):

1. Thoroughly rinse the water supply pipes before installation to remove soiling from the pipes.
2. Using a 12 mm hexagon socket screw key, screw the screw-in nipple into the wall connector. After tightening, the double nipple must protrude by 12 mm.
3. Carefully seal the hot water connection pipe with a little P.T.F.E. Tape and screwed it into the wall connection. Mount the cold water connector piece including the 1/2" seal.
4. Hold the unit on the wall and align it so that the water connectors of the unit fit over the connections of the wall. Mark the drill holes and drill them using a 6 mm drill.
5. Mount the unit to the wall and connect the water supply of the unit, together with the 3/8" seals.
6. Open the water supply line to the unit and slowly open the shut-off valve in the cold water connection piece (8 a) (Pos.I). Check all connections for leaks.
7. Next, open and close the hot water tapping valve several times until no more air emerges from the line and all air has been eliminated from the instantaneous water heater.

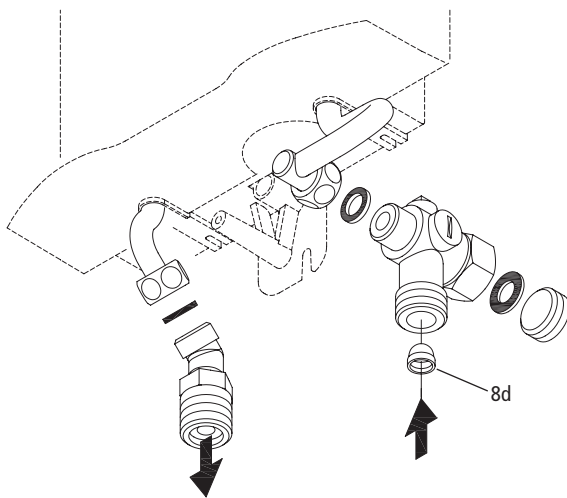
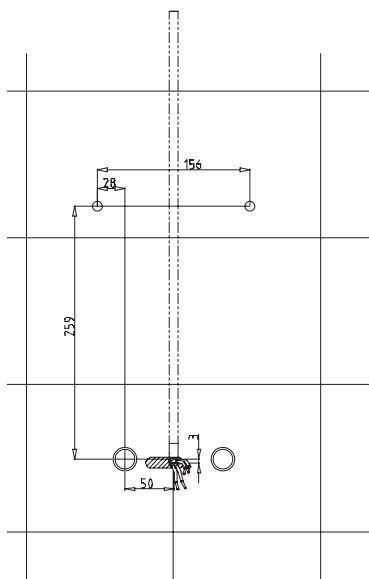
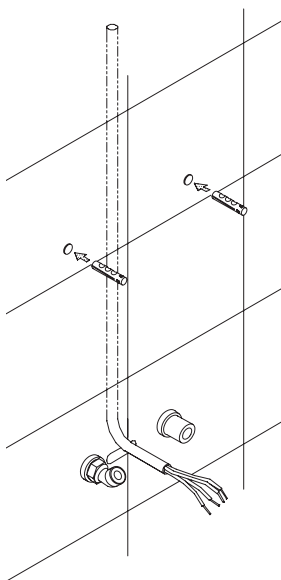




## 6. Installation

### Installing the wall bracket (surface-mounted):

1. Thoroughly rinse the water supply pipes before installation to remove soiling from the pipes.
2. Screw the 1/2" screw in nipple and the 1/2" seal into the 1/2" union nuts of the hot-water connector.
3. The 1/2" cap of the side outlets of the coldwater connectors must be removed and screwed onto the open end of the screw-in nipple.
4. Mount the fine filter into the cold water connection piece (8d).
5. The hot-water and cold-water connectors must then be screwed into the 3/8" union nut of the appliance and delivery pipe, together with the 3/8" seals.
6. Mark the drill holes and drill them using a 6 mm drill. Mount the unit to the wall and connect the water supply of the unit.
7. The holes in the housing of the unit required for the pipes must then be broken out of the housing with the aid of a blunt implement.
8. Open the water supply line to the unit and slowly open the shut-off valve in the cold water connection piece (drawing 8a on page 6). Check all connections for leaks.
9. Next, open and close the hot water tapping valve several times until no more air emerges from the line and all air has been eliminated from the instantaneous water heater.



## 6. Installation



### Installation instructions for the authorized technician

- The statutory regulations of the respective country, as well as those of the local electricity and water supply companies.
- The specifications on the rating plate and the technical specifications.

### Installation site

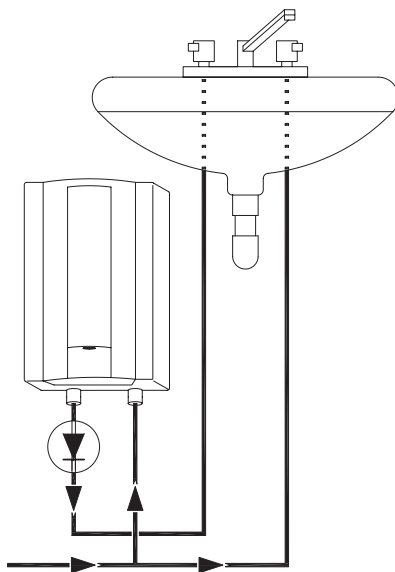
- The installation site must be free from frost at all times.
- The appliance complies with protection type IP25 and may be installed in zone 1 acc. IEC
- In order to avoid thermal losses, the distance between the heater and the tapping point should be as small as possible ( $< 2$  m).
- Best performance is guaranteed at a flow pressure of  $\geq 3$  bar, avoiding pressures exceeding 6 bar.
- Material of water pipes for tubular heater types: cold water: steel or copper, hot water: copper



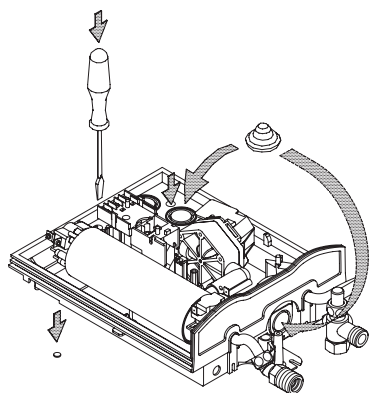
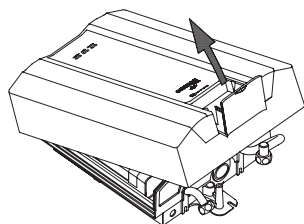
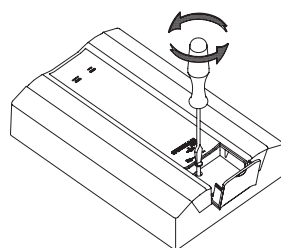
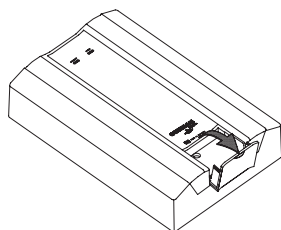
### Important notice!

A backflow preventer (▽) is already provided inside the brass connection of the hot water outlet.

It must NOT be fitted in the cold inlet line before the appliance!

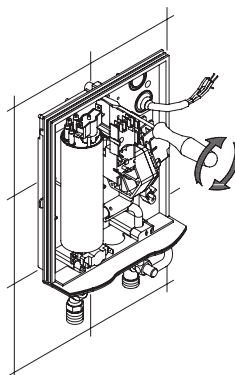


## 6. Installation

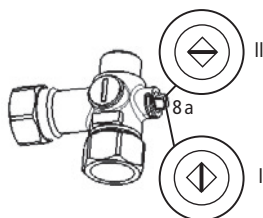
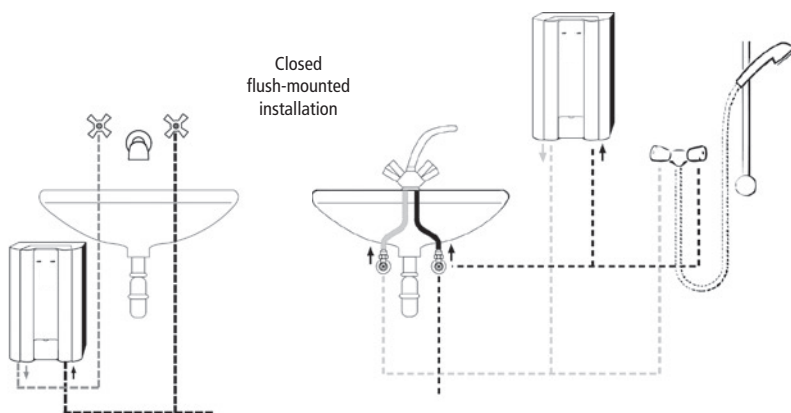


### Installing the appliance:

1. Rinse water supply pipes thoroughly and turn off for installation.
2. Remove the front cover by unscrewing the locking screw behind the small lid.
3. Locate and break out the required holes and cable inlets. Mark the drilling holes with the appliance and drill them with a 6 mm bit.
4. Fit the rubber grommet supplied and insert the connecting lead. The lead must be secured with the cable clamp when using a flexible power cord.
5. Screw the appliance into position using the enclosed raw plugs and screws.
6. Install the appliance as shown in the principal examples above. The inlet and outlet are marked with arrows.
7. The water connections are designed for surface-mounted or flush-mounted installation. They must be carefully sealed with a little P.T.F.E. Tape when screwed into the wall connections.
8. The front cover must be neatly broken at the designated points when installed on the wall.

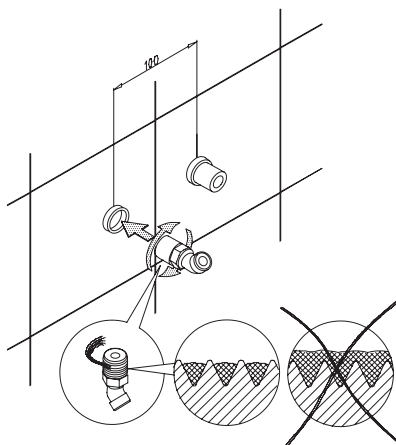
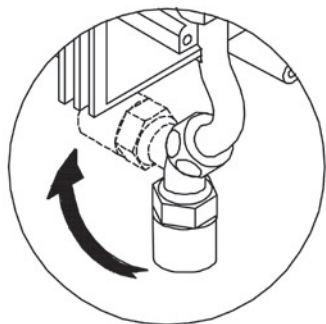


## 6. Installation

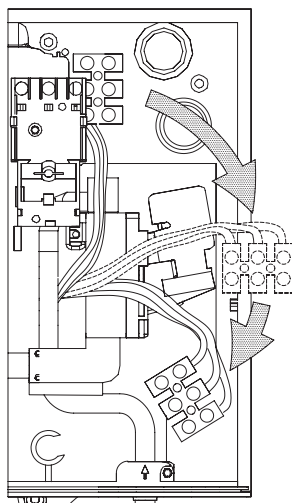
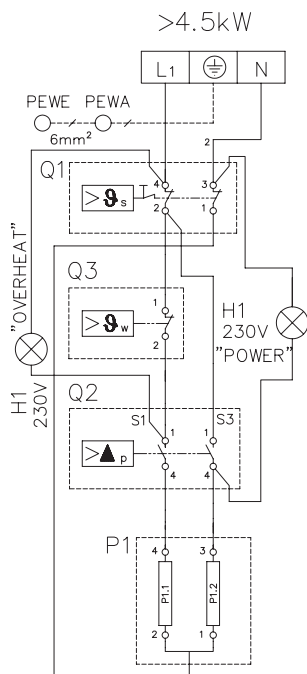


9. Turn on the water supply and slowly open the shutoff valve (8 a) in the cold-water connection (position I) if necessary. **Check all connections for leaks.**

10. Next, open and close the hot water tap several times until no more air emerges from the line and all air has been eliminated from the heater.



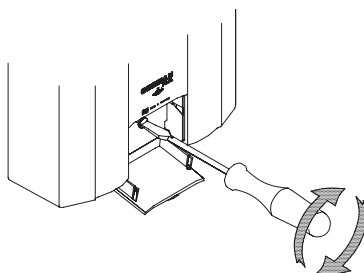
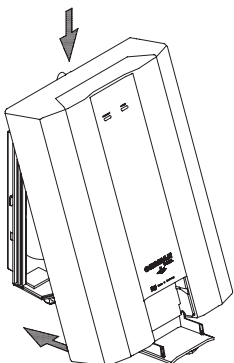
## 6. Installation



### Electrical connection:

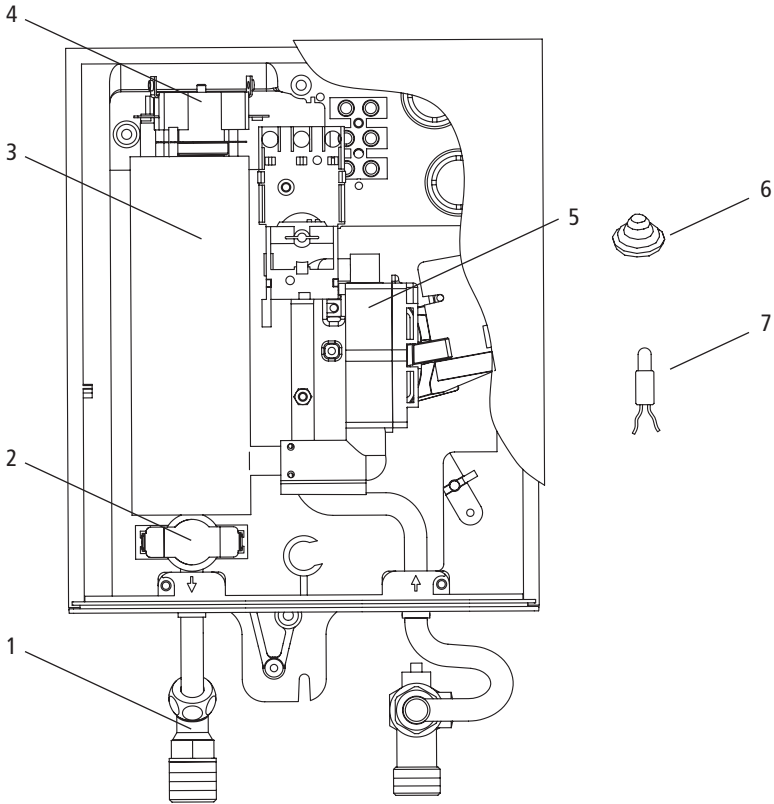
**The instantaneous water heater is an appliance of protection class I and must be connected to the protective earth conductor!**

1. Check that the power supply is switched off prior to the electrical connection!
  - The appliance must be connected to the supply by means of permanent wiring through suitable fuses having a contact separation of at least 3mm in all poles.
  - The cross sectional area of the connection cable must be in accordance with the power rating.
  - To protect the appliance, a fuse element must be fitted with a tripping current commensurate with the nominal current of the appliance.
2. Slit the grommet to match the cable size. The opening in the grommet should be slightly smaller than the cross-section of the cable in order to ensure optimum protection against water. Fit the grommet into the opening. The protection grommet must be used! The appliance must be earthed!
- The connecting terminal can be transferred to the bottom of the appliance if necessary.
3. Fit the front cover properly. Doublecheck whether the temperature keys can be operated easily. If not, make sure that the cover is correctly fitted. Secure the front cover with the fastening screw.
4. Before making the electrical connection, fill the mains and the appliance with water by carefully opening and closing the hot water tap in order to vent completely.
5. Explain the user how the instantaneous water heater works and hand over the operating instructions.
6. Fill in the guarantee registration card and send it to the German Pool Central Customer Service or use the online registration on our website [www.germanpool.com](http://www.germanpool.com).



1. 概述

设备布局



位置 说明

- 1 黄铜连接装置  
(带有插入式回流防止器)
- 2 温度监控器
- 3 加热元件
- 4 安全热熔断断路器 (STB)
- 5 差压开关

位置 说明

- 6 电缆密封
- 7 指示灯

沒有顯示：  
細小的零配件

订购产品零部件时, 请说明产品型号, 规格和序列号。

2. 目录

1. 概述 ..... 14

2. 目录 ..... 15

3. 技术规格 ..... 15

4. 操作说明 ..... 16 – 18

5. 客户服务 ..... 19

6. 安装 ..... 20 – 25

7. 备注 ..... 26

8. 保修条款和条件 ..... 27



操作说明： 使用设备之前，请仔细阅读以下说明！

3. 技术规格

型号	CRH 9
容量	0.2 升
压力类型，额定压力	6 bar
加热系统	管式加热器
标称额定	8.0kW / 220V
额定电压 (50/60Hz)	1/N/PE ~ 220..230V
220V 时的额定电流	36.4A
所需导体最小横截面	3 × 6.0mm²
出厂预设流量减速器	5.0 l/min
当前流量下的温度增量 Δt	23K
进水温度 20°C 时的热水温度	43 °C
接通流速	2 l/min
冷水可用时的温度	30 °C
水管连接	½" B. S. P. 明装或暗装
净重和尺寸 (H × W × D)	2.2 kg / 33 × 21 × 9 cm
VDE 保护等级和保护类型	1 / IP25
安全标记	请参阅型号铭牌



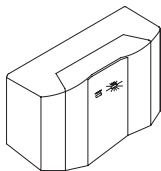
## 4. 操作说明

### 封闭式出水管热水器的安全说明：

- 本设备的安装、初始操作和维护必须只能由经过授权的专业人员进行，他们将负责遵守适用的标准和安装规定。我们对由于不遵守这些说明而导致的任何损坏概不负责。
- 除非设备已正确安装并处于最佳工作状态，否则请勿使用设备。
- 本设备仅适用于在封闭、无霜的房间内供家庭用途和类似的应用，并且必须仅用于加热来自干线供给的进水。
- 本设备永远不得暴露在霜冻环境中。
- 本设备必须始终接地。
- 最大水压不得超过标签上的值。
- 初次试运行之前和每次设备排空后（例如，由于在管道系统上工作后，如果有霜冻风险或如果进行维护时），必须根据本手册中的说明对设备进行正确放气。
- 任何情况下，请勿在切断电源与设备的连接之前拆下前盖。
- 切勿进行技术改动（不论对设备本身还是电线和水管）。
- 请注意，水温超过约 43°C 将被视为热水（尤其是对儿童而言），并且可能导致灼热感。另外，设备使用一段时间后，配件和水龙头可能会非常热。
- 进水温度不得超过 30°C。
- 如果发生故障，请立即断开保险丝。如果发生泄漏，请立即切断冷水供给。只能由客户服务部门或经过授权的专业人员进行维修。
- 身体、感知或精神能力有缺陷或无法获得经验和/或学习知识的人员（包括儿童）必须在负责其安全的人员监督下或了解如何使用本设备后方可使用。儿童应在监督下使用本设备以免其用本设备玩耍。



## 4. 操作说明



### 设备说明

本设备为液压控制的、压力型出水即热式热水器，用于加热一个水龙头或彼此相邻的两个水龙头（例如，厨房水槽或洗脸盆）的分散出水。

由于采用集成式分区切断负载电路，此设备可在没有独立电源的情况下连接到电炉出线盒（如果电炉连接的是 3/N/PE~380/400 V 电源）。

### 用途

即热式热水器可在水流经过时对其加热。设备仅在该时间段内耗电。当水流超过最低流速时，加热电源会自动接通。“Power（电源）”灯指示加热系统已经接通。

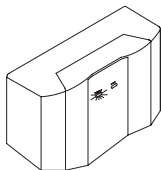
如果即热式热水器与电炉一起连接，电炉将在使用热水时关闭。分区切断负载只可与电机式电炉一起使用！余热指示灯会在使用热水时关闭！

热水温度取决于干线供水的流速及温度。通过水龙头的开启程度，可在 40 °C 至 60 °C 之间调节所需水温：

水流小 = 水更热

水流大 = 水更凉

如果热水器有两个出水口，则设备水流将在两个出水口之间分摊。因此，在这种情况下您应该只使用一个出水口，以保证水流充足，且不会出现温度变化。



### 水温监控器

如果温度升得太高，水温监控器将降低电力供应，直至水温降至允许水平。这种情况将通过“Overheat（过热）”灯表示。如果水温频繁过热，则必须修正故障原因，可能原因包括：过滤器中存在污垢，流速降低过度，或者注入水温过高。

### 放气

为避免设备损坏，初次使用即热式热水器之前必须对其进行放气。每次排空后（例如在管道系统上工作后，如果有霜冻风险或随后需要进行维修工作时），再次使用之前必须重新对设备进行放气。

1. 拆下保险丝，断开设备与电源的连接。
2. 接下来，打开和关闭热水龙头阀门数次，直到没有气体从管道排出并且所有气体均已从热水器中排出（约 1 分钟）。
3. 然后将电源重新连接至设备。

### 如何节约能源以保护环境

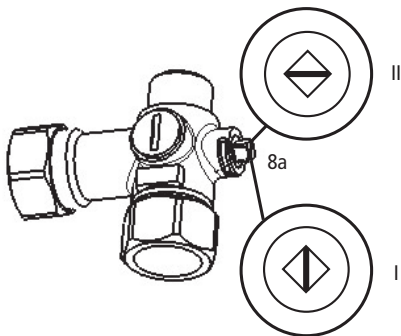
如果水管直接沿着与水龙头（建议使用出口敞开式水龙头）连接的管道进行安装，则经由水管流失的热量会非常少，并且无需首先抽取大量冷水便可迅速供应热水。

### 清洁过滤器

若出现故障，应检查冷水进水口内的过滤器，并在必要时进行清洁。



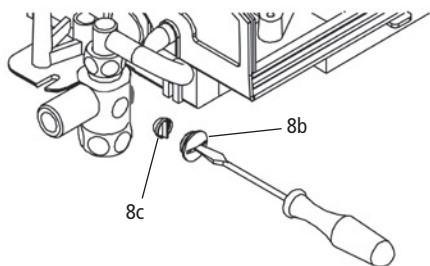
## 4. 操作说明



### 清洁细滤器（暗装）

细滤器位于水管连接 (8) 中，应由专家在设备运行退化 and 定期维护时进行检查和清洁。

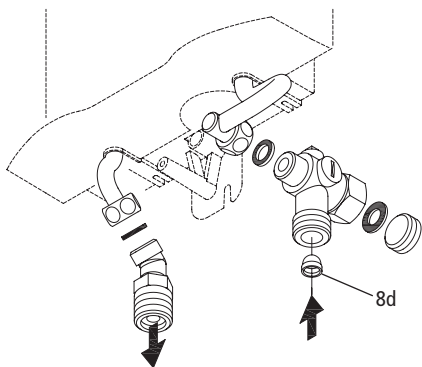
1. 通过断开家庭保险丝的方式断开即热式热水器的连接，关闭冷水连接件（位置 II）中的关闭阀（8a）或关闭干线供给。
2. 旋松冷水连接件的螺旋塞（8b）并取出滤网（8c）。  
注意： 残留的水将流出！
3. 滤网可以清洁或更换。
4. 固定滤网后，拧紧螺旋塞。
5. 慢慢打开冷水连接件（位置I）中的关闭阀。
6. 将设备放气，方法是小心地打开和关闭相连的热水龙头阀门数次，直到不再有气体从管道中排出。



### 清洁细滤器（明装）

细滤器位于水管连接 (8) 中，应由专家在设备运行退化 and 定期维护时进行检查和清洁。

1. 通过断开家庭保险丝的方式断开即热式热水器的连接，关闭干线供水。
2. 旋松设备的冷水进水连接装置并从连接件取出滤网（8d）。 注意： 残留的水将流出！
3. 滤网可以清洁或更换。
4. 固定滤网后，请重新组装设备的水管连接。
5. 小心地打开干线供水。
6. 将设备放气，方法是小心地打开和关闭相连的热水龙头阀门数次，直到不再有气体从管道中排出。



5. 客户服务

如果您遇到故障，请首先尝试借助此表格自行修复故障。 如果借助此表格无法修复设备的故障，请联系 German Pool，我们将直接为您提供帮助，或帮助您与当地的客户服务签约合作伙伴进行联系。

请务必指定设备型号和序列号！

问题	可能的原因	解决方案
LED 不亮，水不热	电路断路器已触发	修复该故障并复位
“Power”（电源）指示灯亮起，水不热	加热元件或电子设备故障	复位保险丝，如果水仍然不热，请联系客户服务
	安全热熔断路器已触发	复位。 如果反复跳闸，请联系客户服务
“Pressure”（压力）指示灯亮起，水不热	流速过低	增加流量压力清洁水龙头配件或淋浴头
水流如预期降低速度	取决于热水器	查看技术规格
	出水管配件脏污或钙化	清洁水龙头配件或淋浴头
	过滤器脏污或钙化	清洁或更换过滤器
	水龙头不合适	使用合适的淋浴头或通风装置
热水不够热	电路板	复位保险丝
	流速过高（冬季？）	稍微减少水流量
	加热元件故障	联系客户服务
温度和压力变化	添加了冷水	只提供某一度范围内的热水

如果借助此表格无法修复故障，请联系您的分销商或德国宝客户服务总部。

只能由经过授权的专业人员进行维修！

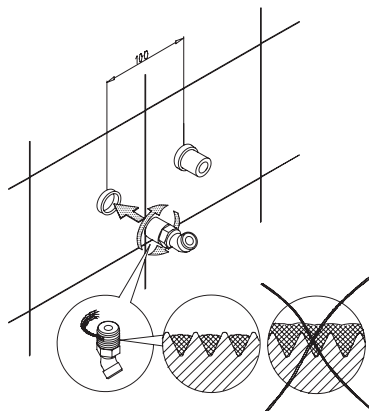
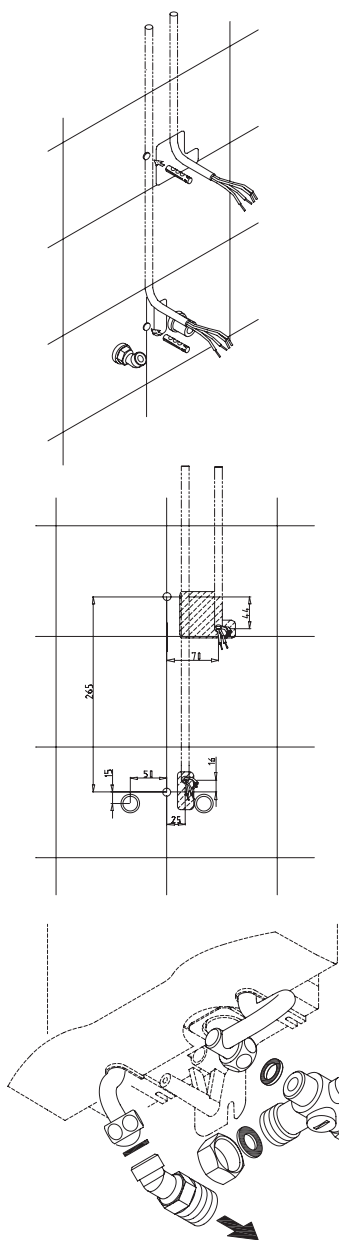
我们可能会向经过授权的客户服务公司提供您的姓名和地址，也可能会自己维修热水器。如果是后一种情况，请递交热水器（自行承担费用和风险）及问题详情和销售发票的副本。

## 6. 安装

如果您安装的是即热式热水器 CRH9 而不是传统的即热式热水器，则通常墙壁固定支架不需要钻孔。在这种情况下，您只需要如 2 中所述拧紧双向管接头并固定壁托架即可。

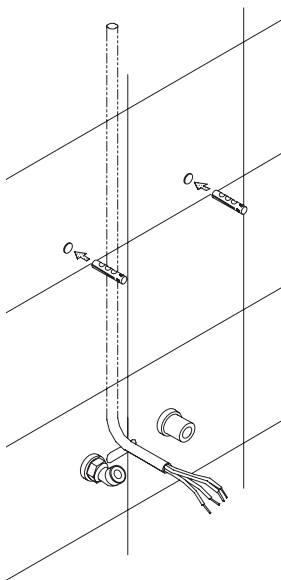
### 安装壁托架（暗装）：

1. 安装前，仔细清洗供水管道，以除去管道中的脏污。
2. 使用 12 mm 的内六角形螺钉扳手，将拧入式管接头拧入墙壁接头中。拧紧后，双向管接头必须突出 12 mm。
3. 使用少量 P.T.F.E. 仔细密封热水连接管。将其用带子固定并拧入墙壁连接装置中。装配附带 1/2" 密封件的冷水连接件。
4. 握住墙壁上的设备并将其对齐，以便设备的水管接头装在墙壁连接装置上。标记钻孔位置并使用 6 mm 钻头来钻孔。
5. 将设备装到墙上并连接设备的水源，以及 3/8" 密封件。
6. 打开设备的供水管道并慢慢打开冷水连接件（8a）（位置 1）中的关闭阀。检查所有连接有无泄漏。
7. 接下来，打开和关闭热水龙头阀门数次，直到没有气体从管道排出并且所有气体均已从即热式热水器中排出。

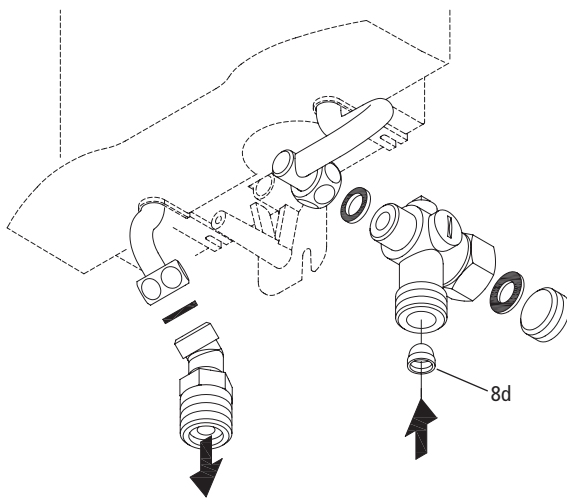
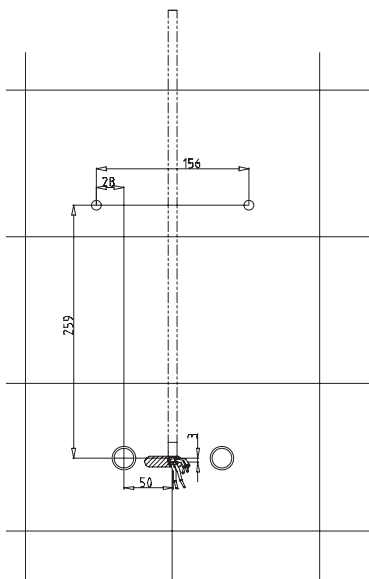


## 6. 安装

### 安装壁托架（明装）：



1. 安装前，仔细清洗供水管道，以除去管道中的脏污。
2. 将管接头中的 1/2" 螺钉和 1/2" 密封件拧到热水管接头的 1/2" 管接螺母中。
3. 必须卸下冷水管接头侧面出水管的 1/2" 螺帽，并将其拧到拧入式管接头的开口端。
4. 将细滤器装到冷水连接件（8d）中。
5. 然后，必须将热水和冷水管接头拧到设备和输送管道的 3/8" 管接螺母以及 3/8" 密封件上。
6. 标记钻孔位置并使用 6 mm 钻来钻孔。将设备装到墙上并连接设备的水源。
7. 设备外壳上必须有孔，管路才能在钝器的协助下穿出外壳。
8. 打开设备的供水管道并慢慢打开冷水连接件（8a）中的关闭阀。检查所有连接有无泄漏。
9. 接下来，打开和关闭热水龙头阀门数次，直到没有气体从管道排出并且所有气体均已从即热式热水器中排出。



## 6. 安装



### 适用于经授权技术人员的安装说明

- 各国家/地区的法律规定以及当地的电力和供水公司的规定。
- 标称铭牌上的规格和技术规格。

### 安装地点

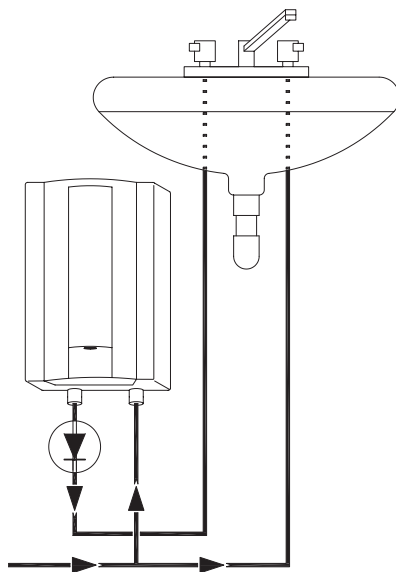
- 安装地点必须一律为无霜环境。
- 设备符合保护类型 IP25 并且可根据 IEC 安装在区域 1
- 要避免热量流失，热水器和分接点的距离应尽可能小 ( $< 2\text{ m}$ )。
- 流动压力大于等于 3 bar 时可以保证最佳性能，请避免压力超过 6 bar。
- 管式加热器型号的水管材料：冷水：钢或铜，热水：铜



### 重要注意事项！

热水出水管的黄铜连接装置内已提供回流防止器（ $\nabla$ ）。

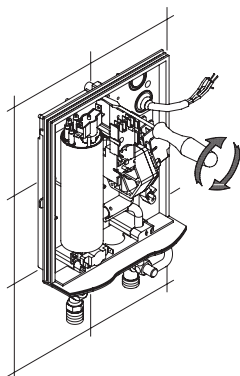
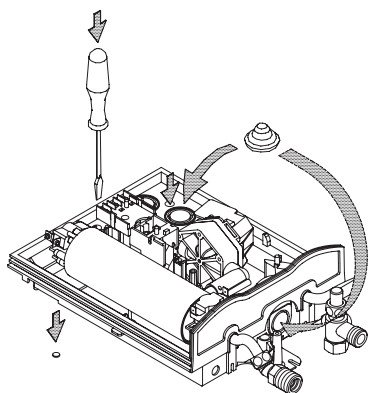
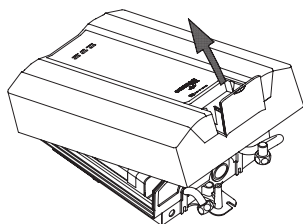
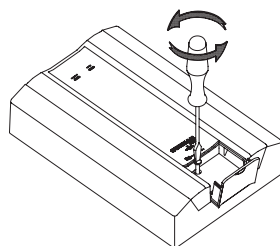
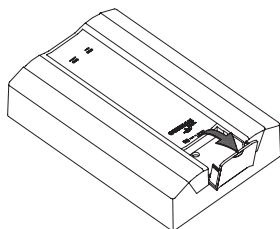
回流防止器“不得”装在设备之前的冷水进水管中！



## 6. 安装

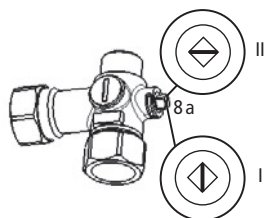
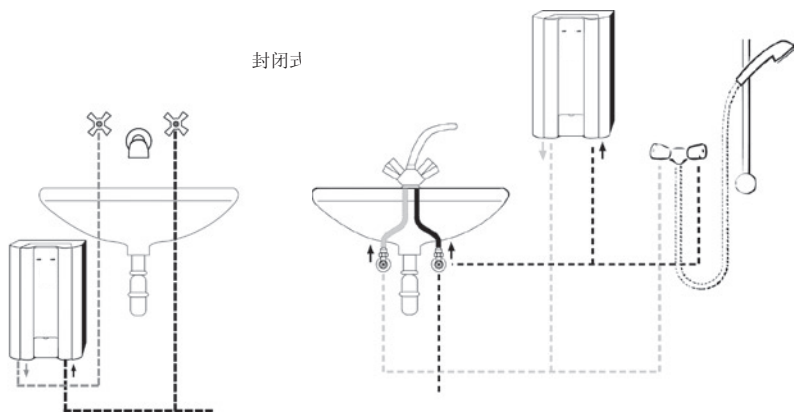
### 安装设备：

1. 彻底清洗供水管道并关闭以便安装。
2. 通过旋松小盖子后面的锁定螺钉，卸下前盖。
3. 找到并打破所需的孔和电缆入口。使用设备标记钻孔位置并以 6mm 钻头钻孔。
4. 装上提供的橡胶垫圈并插入连接导线。使用挠性电源线时，必须使用电缆夹固定导线。
5. 使用附带的原装螺塞和螺钉将设备固定到位。
6. 如上面的基本示例所示安装设备。使用箭头标记进水口和出水口。
7. 水管连接设计对于明装或暗装均可。必须使用少量 P.T.F.E. 仔细地密封。固定到墙壁连接后使用带子固定。
8. 安装到墙上时，前盖必须在指定点打破。



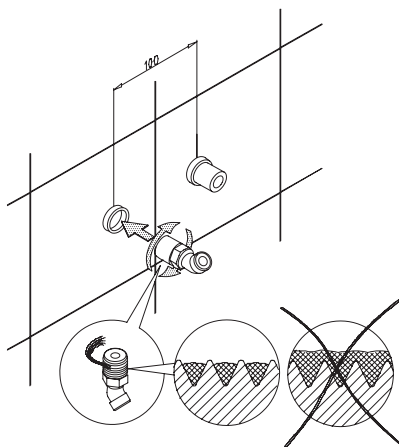
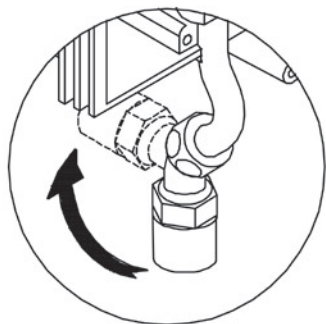
## 6. 安装

封闭式



9. 打开水源并慢慢打开冷水连接（位置 I）中的关闭阀（8a）如有必要）。 **检查所有连接有无泄漏。**

10. 接下来，打开和关闭热水龙头数次，直到没有气体从管道排出并且所有气体均已从热水器中排出。







[illegible]

请填写以下空格并与发票一并保存，以便维修时核对资料。用户提供本公司之所有资料必须正确无误，否则免费保用将会无效。  
Please fill out the form below. This information and the purchase invoice will be required for any repairs. Warranty will be invalid if information provided is found to be inaccurate.

型号 Model No. : ☐ CRH9

机身号码 Serial No. : \_\_\_\_\_

购买商号 Purchased From : \_\_\_\_\_

发票号码 Invoice No. : \_\_\_\_\_

购买日期 Purchase Date : \_\_\_\_\_

## 保用条例

此保用提供德国宝产品之机件在正常使用下壹年保用(自购买日起计算)，根据下列条例，总代理有权选择维修或更换热水器或其损坏部份。

贵户须在购机十天内，以下列其中一种方式向本公司登记资料，保用手续方正式生效：

- 1) 填妥本公司网页内之保用登记表格 [www.germanpool.com/warranty](http://www.germanpool.com/warranty)
- 2) 填妥保用登记卡，并连同购机发票之副本一并邮寄到维修及客户

服务部 (本公司将不发还发票副本或登记卡)

- 此保用不包括：非家庭性质用途；因意外而造成的损坏(包括运输及其它)；任何附件及辅助装置；以及一切因人为、电源接合不当、不依说明书而错误或疏忽使用本机、经非本公司认可之安装及不当维修等等所引致之损坏。
- 于下列情况下，用户之保用资格将会被取消：维修时未能出示购买发票正本及保用证明书；购买发票或保用证明书有任何非认可之删改；产品经非本公司认可之技术人员改装或被加装任何未经许可之配件；机身编号被擅自涂改、破坏或删除。
- 如用户自携热水器或部份配件到本公司维修部检查或维修，本公司将会收取检查或测试费用。

## Warranty Terms & Conditions

Our Repairs & Customer Service Centre will provide rectification of any defect of manufacturing materials free of charge given that such defect is reported within 12 months from purchase date.

This warranty is not valid until Customer's registration information is returned to and received by our Service Centre within 10 days of purchase via one of the following methods:

- 1) Visit our website and register online: [www.germanpool.com/warranty](http://www.germanpool.com/warranty)
- 2) Complete all fields on the attached Warranty Card and mail it back to our Repairs & Customer Service Centre along with a photocopy of the purchase invoice (Warranty Card and invoice copy will not be returned to Customer)

- Product must be used solely for domestic purposes. Customer should always follow the operating instructions. This warranty does not apply to: replacement of accessories and parts; damages caused by incorrect voltage, improper operations, unauthorized installation or repairs as well as accidents.
- This warranty will be considered invalid if: original invoice and warranty passport are not presented; original invoice and/or warranty passport is altered or modified by unauthorized party; product is installed or repaired by any unauthorized technician; non-standard part is used; serial number on product body is removed, destroyed or altered by any unauthorized party.
- Regardless of warranty status, all walk-in requests for water heater repair or replacement service at our Customer Service Centre are subject to testing and handling charges.

## 客户服务总部

中国广东省佛山市顺德区  
龙江镇工业大道11号

电话：+86 400 830 3838  
传真：+86 0757 2336 0284  
电邮：[shunde@germanpool.com](mailto:shunde@germanpool.com)

## Customer Service Headquarters

11 Industrial Road, Longjiang Town,  
Shunde District, Foshan City, Guangdong, China

Tel : +86 400 830 3838  
Fax : +86 0757 2336 0284  
Email : [shunde@germanpool.com](mailto:shunde@germanpool.com)

此保用证只适用于中国 | This warranty card is valid only in China

# 德国宝(香港)有限公司 German Pool (Hong Kong) Limited

## 中国客户服务办事处

China Customer Service Office :

广东省佛山市顺德区龙江镇工业大道11号

11 Industrial Road, Longjiang Town, Shunde District, Foshan City, Guangdong

## 全国服务热线

China Customer Service Hotline :

400 830 3838

## 电邮

Email :

info@germanpool.com



香港(S MARK)  
安全认证



中国厨柜/家电行业  
十大影响力品牌

CEO

CEO非凡品牌大赏



香港优质商号



香港工商业奖



2007  
最具潜质  
创建品牌企业奖



香港中小企业  
最佳拍档大奖



香港消费者推崇品牌



香港(Q mark)  
优质服务证书



香港名牌  
HONG KONG  
TOP BRAND

© 版权所有。未获德国宝授权，不得翻印、复制或使用本单张作任何商业用途，违者必究。

© All rights reserved. Copying, reproducing or using the contents of this leaflet is not allowed without prior authorization from German Pool, violators will be prosecuted.

www.germanpool.com