

ECOVACS



免费咨询服务热线: **400-779-4666**
(每日9:00—17:30)

科沃斯电器·中国
ECOVACS Electrical·China

上海泰怡凯电器销售有限公司
Shanghai TEK Electrical Sales Co. Ltd.

地址: 上海市徐汇区中山西路1800号兆丰大厦 环球11J 邮编: 200235
电话: 021-64401298 传真: 021-64401580
邮箱: ecovacs@tekfirst.com.cn
网址: www.ecovacs.com.cn

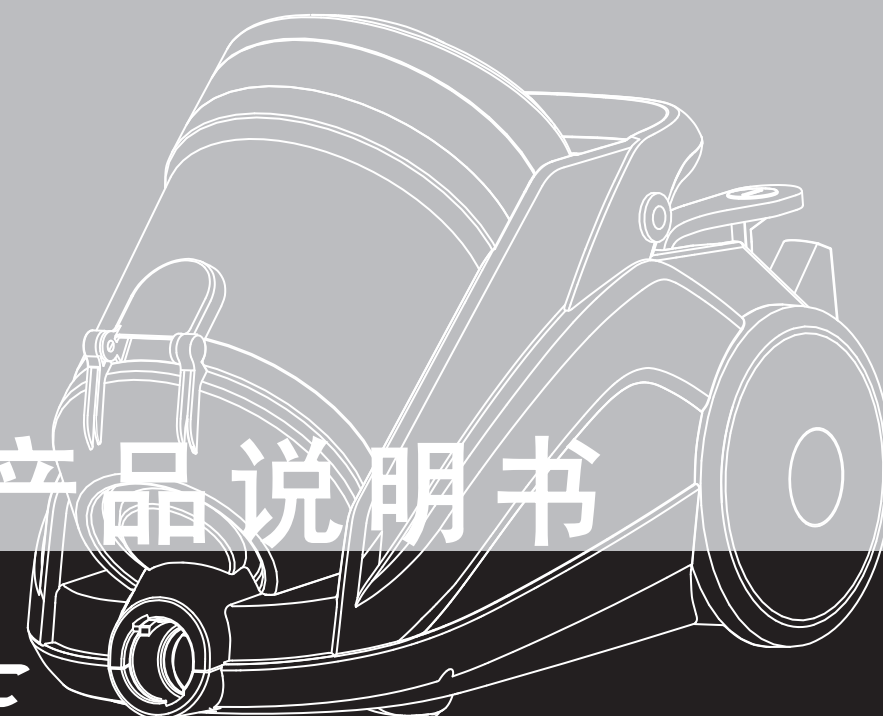
本资料产品以实物为准, 泰怡凯公司保留产品更新的权利, 如有变动, 恕不另行通知。

ZW0514 产品说明书

SUPERSONIC

超音速·离芯卧式真空吸尘器

SUPERSONIC Cylinder Vacuum Cleaner





感谢您购买 ECOVACS™ ZW0514 SUPERSONIC 超音速·离芯系列吸尘器产品。希望您使用愉快！再次感谢您的选择！

Thanks for purchasing ECOVACS™ ZW0514 patented SUPERSONIC series vacuum cleaner products. Hope you can enjoy it ! Thanks again for your choice!

在使用中如果您对产品有任何的疑问，欢迎拨打我们的热线服务电话：400 779 4666 。

If you have any question regarding the product in using , please call us on 400 779 4666 for service.

Thank you for your choice!

16mm

16mm

23mm

目录

产品零部件名称及示意图	3
产品技术参数	3
1. 安全说明	4
1.1 关于本说明书	4
1.2 关于本说明书中所使用的标识	4
1.3 关于产品使用的电源	4
1.4 关于儿童安全	4
1.5 关于产品的使用范围	4
1.6 产品出现问题时	5
2. 装配说明	5
2.1 打开产品包装	5
2.2 组装	5
2.3 使用其他吸嘴和附件	6
3. 产品操作	7
3.1 开始吸尘	7
3.3 切断电源、卷线器收线	7
3.3 产品收存	8
3.4 清理尘桶	8
4. 过滤系统	8
5. 产品的日常保养	9
6. 故障及修理	9

产品零部件名称及示意图

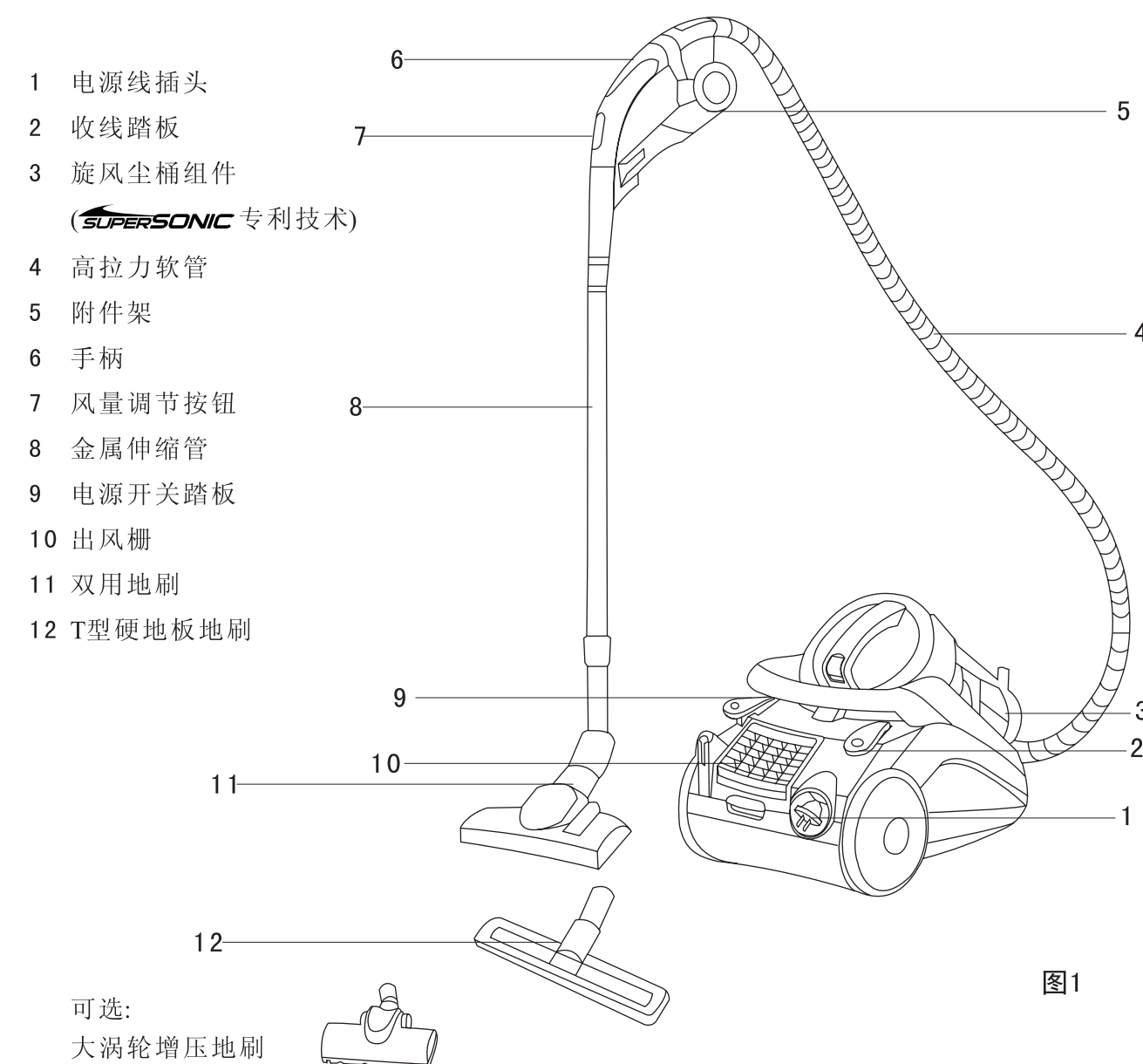


图1

产品技术参数

产品类别： 超音速·离芯（SUPERSONIC）卧式真空吸尘器

产品型号： ZW0514

额定电压/频率： 220V~50Hz

额定输入功率： 1200 -1400W nom.

最大输入功率： 1400 -1600W max.

电源线长度：8米 噪音：≤68分贝

真空度：≥19Kpa 产品净重：7.2Kg

集尘容量：3L

整机外形尺寸：470mm×300mm×345mm

本公司保留由于产品持续改善需要而对产品进行的任何技术、设计变更的权利。

*解释权归上海泰怡凯电器销售有限公司所有

1 安全说明

1.1 关于本说明书



在使用本产品之前,请仔细阅读本说明书的所有内容。
妥善保管本说明书。如果您将产品转给第三方使用,请将本说明书连同机器一起随付。
任何同说明书指引内容不符的操作,都有可能导致严重的人身伤害或对产品本身造成损伤。
由于未按照本说明书指引进行操作而导致的损失,皆与本公司无关。
本产品只适合于在家庭环境中操作。不适用于工业或者商业用途。

1.2 关于本说明书中所使用标识



警告:

提醒您可能对您的健康安全造成伤害的风险。

注意:

提醒您注意可能产生的对产品和其他物体造成危害的风险。

1.3 关于产品使用的电源



本产品使用220V电压,存在产生电击的可能。需要特别注意以下事项:

- 禁止用潮湿的手触摸插头。如果您需要拔出插头,请务必直接握住插头拔出,不能用手直接拉扯电源线,容易导致电源线破裂造成危险。
- 请务必确保电源线不被弯折或被其他物体压住,也不能用其他重物碾过电源线。将电源线远离热源。
- 禁止将本产品浸入水或任何其他液体,务必使产品远离雨水或潮湿的环境。
- 使用前请确保产品底部铭牌上所标识的电压同您家中电源插座电压一致。不匹配的电压会对产品造成破坏。

1.4 关于儿童安全



儿童和没有能力判断附近危险性的人群不能使用本产品。
妥善保管产品,存放于儿童和没有能力判断附近危险性的人群可触及范围之外,产品工作时,尤需加倍小心。
产品的包装材料不得作为玩具,此类包装有导致窒息的危险。

1.5 关于产品的使用范围



本产品适用于普通地面、地毯、窗帘等的清洁。禁止将本产品应用于其他任何不在设计范围之内的物体上。

不得利用本产品来吸取或靠近:

- 带有未熄灭热源的烟灰、燃烧的烟头或火柴。可能导致火灾。
- 水或其他液体,特别是地毯清洁溶液。内部潮湿或进水会导致电器短路。
- 激光打印机、复印机内部使用的调色剂、色粉。可能导致火灾或者发生爆炸。
- 头发、手指和身体的其他部位。可能被拉入造成人身伤害。
- 不可在易燃易爆类物品附近使用。有导致火灾和爆炸的风险。
- 不可在户外使用,可能会因为雨水等原因造成产品受损。

2 装配说明

- 产品的进风口不可被其他物体堵塞,可能导致机器过热。
- 吸尘器应远离热源(如暖气、烤箱等),以免塑料件变形,影响使用。
- 在使用之前,请先清除地面上大而尖锐的物体,如别针、回形针等,以免对产品造成损伤。

1.6 产品出现问题时



禁止在产品出现问题时或电源线损伤时继续使用本产品。有人身伤害的危险存在。需将产品送交本公司指定的专业维修机构由专业维修人员提供售后服务及维修。
详细请参见产品的保修证。

2.1 打开产品包装

在装配吸尘器前,请对照零部件列表确认已经收到吸尘器所有的零件。

特别提醒:



请保留产品的原包装。在搬运产品时使用原包装,以保证产品不受损伤。

注意:



如果您注意到新购买的产品存在因运输所引起的破损等现象,请立即同您购机时的经销商联系。

2.2 组装

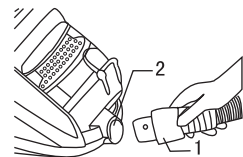


图2

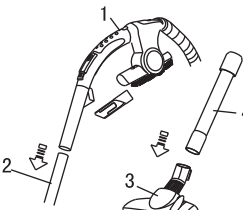


图3

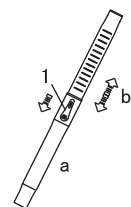


图4

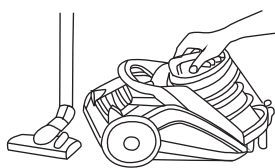


图5

- 如图2,将软管末端(图2/1)沿水平方向插入机体风道入口处(图2/2),注意两个突起部位的对位,推到底部时右旋手柄组件,可听见“咔”的卡位声,即软管组件已经装配到位。
- 将软管手柄(图3/1)凹槽插入金属伸缩管的上部相应位置(图3/2),听到“咔”声即为已经装配完成。若需取下手柄,则只需按下手柄连接处的锁扣即可。
- 将地刷(图3/3)插入金属伸缩管的下部接口(图3/4),听到“咔”声即为已经装配完成。若需取下地刷,则只需按下地刷与金属伸缩管连接处的锁扣即可。
- 调节金属伸缩管的长度
向前(图4/a方向)推动金属伸缩管按钮(图4/1),同时拉伸(图4/b方向)金属伸缩管至所需要的长度即可。
- 安装和取下尘桶
如图5,将尘桶底部放在机体前端突起部位,压下尘桶,当前端锁扣完全进入机体对应部位,且听见“咔”的卡入声时,即为尘桶已装配到位。

18mm
15mm

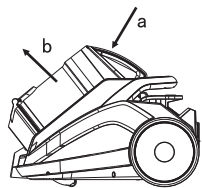


图6

2. 3 使用其他吸嘴和附件

除了以上提到的地刷之外，您还可以搭配使用其他的吸嘴或附件来扩展产品的使用范围。

产品本身包含1个扁吸嘴和1个2合1小毛刷，可如图装配在产品软管手柄上(图7/1)。

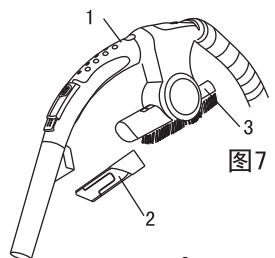


图7

— 扁吸嘴(图7/2)

适用于缝隙等狭小的空间吸尘。

2合1小毛刷(图7/3)包含两部分：

— 家具刷(图8/1)

适用于清理橱柜和门等，需要特别保护的表面。

— 小方刷(图8/3)

如图简单地移除2合1小毛刷底部的刷毛部分(图8/2)，就可作为小方刷(图8/3)，适用于软性材料的表面清理：如沙发、带软垫的家具表面等。

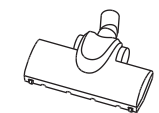


图8

6

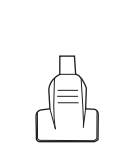


图9-1

作为可选的配件：您所购买的型号可能配备大涡轮增压地刷(图9)和迷你涡轮增压地刷(图9-1)。这两个地刷内部有可以转动的刷毛轴，所以特别适用于地毯、床褥、沙发的深层清洁，能够通过刷毛轴的转动而产生的震动拍打来驱除螨虫。

*大涡轮增压地刷只在某些特定的型号中配备，因此您所购买的型号中可能没有此配件，请根据您的需要选择购买。



提示：在使用风动地刷时，由于刷毛轴快速转动可能会产生较大的声音，这属于正常现象，请放心使用。

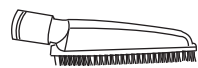


图10

床刷(图10)：
适用于快速清理床铺、沙发等表面。

3 产品操作

3. 1 开始吸尘



警告：每次使用前请务必仔细检查产品及电源线。如果产品或电源线有破损，禁止使用，可能会造成危险。



注意：使用产品前请确保所有的过滤设备都已装配到位。过滤设备不能有破损。清洗后的过滤材料必须彻底干燥后方可使用，否则会对产品造成损伤。



提示：本产品为避免因意外堵塞造成产品内部过热(例如地刷、硬管、软管被垃圾堵塞或尘桶内灰尘过满)，已经配备安全阀和电机温控器，一般情况下，如果机器因意外堵塞，产品升温，安全阀首先会打开工作，降低产品温度。如果安全阀打开，仍然不能降温，此时电机温控器会自动启动，产品停止工作。请关闭产品的电源开关并拔下插头，找到机器发热的原因，等待机器冷却后重新插上插头(此过程一般需要持续30分钟左右)，重新打开产品电源开关，产品恢复正常工作。



注意：如果吸尘器电源开关没有关闭，即使机器已冷却，电机温控器仍不会复位。

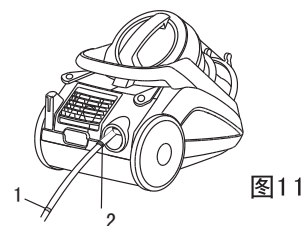


图11

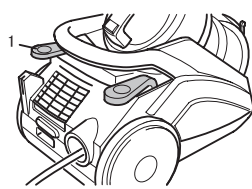


图12

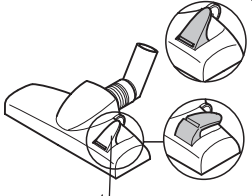


图13

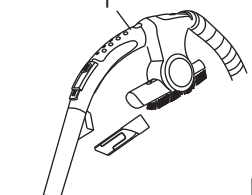


图14

3. 2 切断电源、卷线器收线

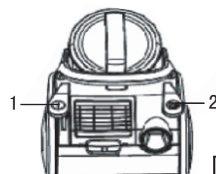


图15



警告：如果您看到电源线末端的红色标记(图11/2)被拉出，请将电源线收回(参见3. 2切断电源、卷线器收线)至红色标记不可见。否则电源线有脱落的危险，对产品造成损伤。

3. 按动电源开关踏板启动吸尘器(图12/1)。

4. 再次按动电源开关踏板可关闭吸尘器。

5. 调节地刷按钮(图13/1)。

根据不同的地面情况选择：

— 地毯(图13/a)

适用于长毛、短毛地毯等。

— 硬地板(图13/b)

适用于木地板、瓷砖等。

6. 对于窗帘等不需要太大吸力的物体表面清洁，您可以通过调节软管手柄上的风量调节按钮(图14/1)来减小吸入功率。

1. 通过按动产品电源开关按钮(图15/1)让产品停止工作。

2. 握紧插头，将插头从电源插座中拔出。



警告：电源线可能会在快速收进机体的时候产生较大的抽击力，所以务必握紧插头，避免将人绊倒或击中其他物体。

3. 按动收线按钮(图15/2)将电源线收入机体。

7

3.3 产品收存

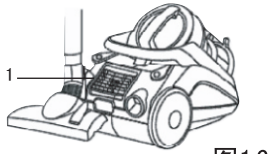


图16

在产品使用过程中如果有电话或者其他需要处理的事情，只需简单地将地刷弯管上的挂钩插入机器后部预留的卡槽(图16/1)，为您提供方便。



提示：如果您的产品长时间不用，请清理尘桶及过滤材料，保持清洁。将产品避阴存放于干燥的空间中。

3.4 清理尘桶



图17

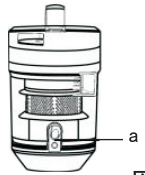


图18

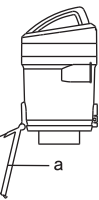


图19

警告：

如果您需要离开产品的工作范围，请务必关闭吸尘器电源(参见3.2切断电源、卷线器收线)。这将帮助您避免发生意外。



当尘桶内吸入的灰尘达到尘桶上所标识的MAX位置时，请清理尘桶，确保最佳的吸尘效果(图17)。



注意：禁止将产品直接放置在热源附近(比如:加热器、火炉等)。避免阳光直射。热源会对产品造成损伤。



注意：在清洁尘桶前请务必切断产品电源(参见3.2切断电源、卷线器收线)，避免灰尘吸入对产品造成损伤。

- 1.取下尘桶(参见2.2.5安装、取下尘桶)。
- 2.打开尘桶底盖前将尘桶底部对准垃圾桶(图18)。
- 3.按动尘桶底盖释放按钮(图18/a),此时尘桶底盖(图19/a)打开。
- 4.轻轻晃动尘桶将垃圾倒出。
- 5.关闭尘桶底盖，将尘桶重新安装进整机(参加2.2.5安装和取下尘桶)。

4 过滤系统

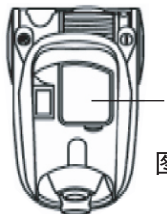


图20

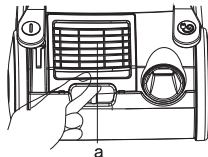


图21

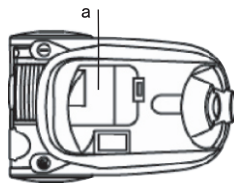


图22

本产品配有如下的过滤材料：

- 1.电机进风过滤(图20/a)
-防止灰尘、异物进入电机，破坏产品。

- 2.电机出风过滤HEPA(图21/a)
-过滤机器中的出风灰尘，避免二次污染。

过滤材料的清洁：

- 1.打开电机进风过滤盖(图22/a)，取出电机进风过滤。

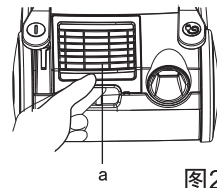


图23

- 2.打开位于机器尾部的出风栅(图23/a)，取出出风HEPA。



注意：取出电机进风过滤前，请确保切断产品的电源(参见3.2切断电源、卷线器收线)。

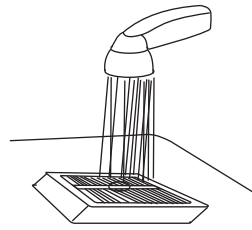


图24

*通常情况下可以通过轻轻拍打过滤材料的方式清除上面附着的灰尘。如果需要，可以将过滤材料放置在水龙头下清洗(图24)。不可以用刷子用力刷，以免破坏过滤材料。



注意：清洗后的过滤材料必须彻底干燥后方能重新使用，否则可能造成机器内部出现过热现象，产生危险。通常，为确保过滤材料彻底干燥，清洗后需在室温下干燥至少24小时。

5 产品的日常保养

- 1.所有的日常保养和维护工作都应在吸尘器电源插头拔掉以后进行。
- 2.经常清理尘桶内的垃圾，避免吸尘器出故障。
- 3.吸尘器的表面不可用汽油或油状物擦洗，应用水或中性的洗涤剂擦洗。



注意：擦洗时擦布务必要拧干，不可将水渗入吸尘器电气元件内。

- 4.吸尘器闲置不用时，不要放在阳光直射或潮湿的地方。

6 故障及修理

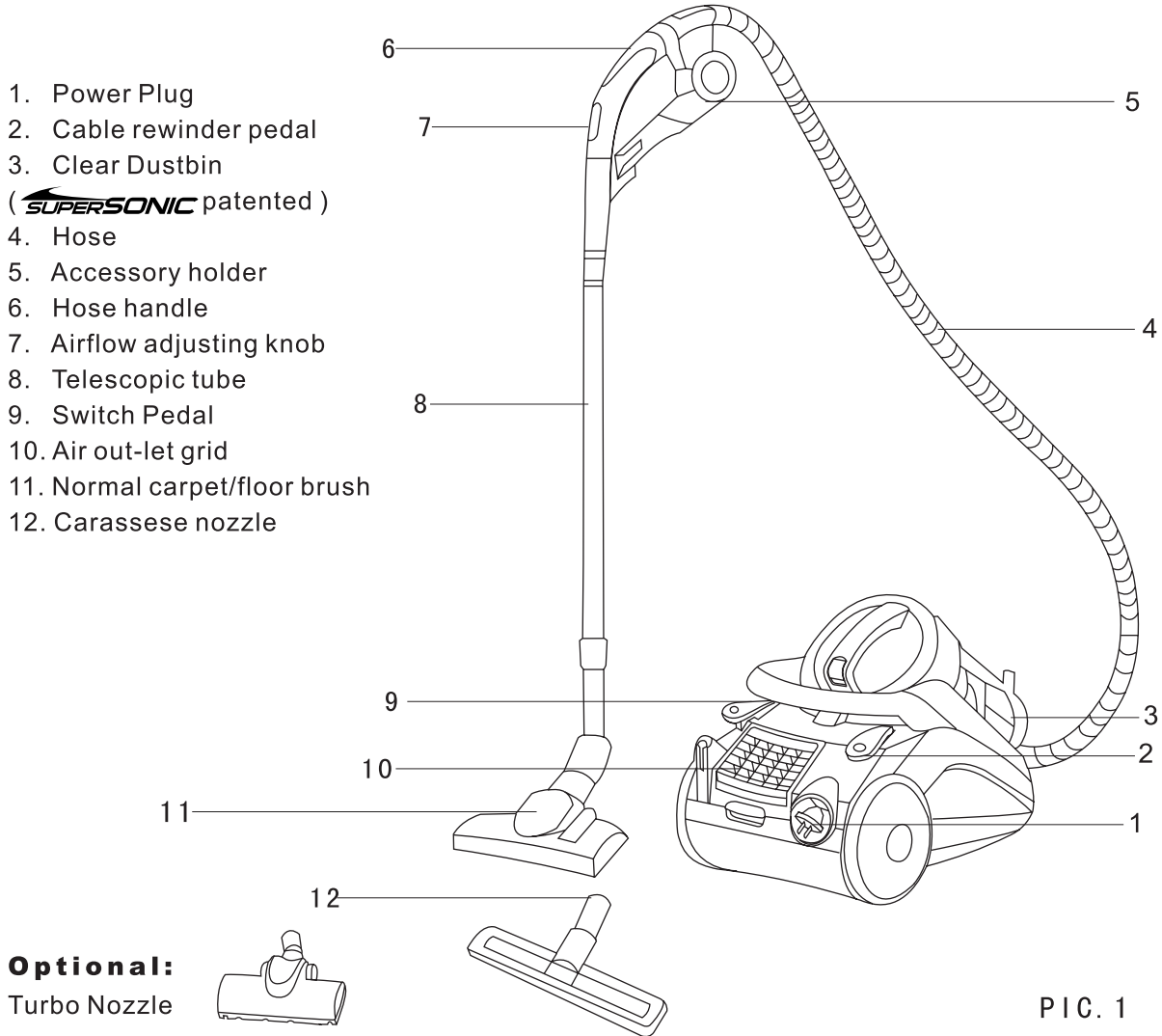
本产品如发生使用异常，请先按照下述方法处理。若吸尘器仍未能正常工作，请您购买产品时的经销商或特约维修点联系（具体请参见本产品的保修证）。

故障现象	处理方法
吸尘器不工作	1.检查电源插头是否插牢，将插头拔下，重新插入电源插座内。 2.检查电源插座是否有电。 3.检查吸尘器电源开关是否处在“开”位置。
吸力减弱	1.检查地刷、软管和插管是否堵塞，及时将堵塞物除去。 2.检查进风滤网是否积满灰尘，经常清理垃圾或清洁电机进风过滤、出风HEPA。
电机运转有异响	1.吸尘器立即停止使用。 2.检查地刷、软管及插管是否被堵塞，及时将堵塞物除去。

LIST OF CONTENTS

Appliance Parts & Diagram	11
Technical Data	11
1. Safety Instruction	12-13
1.1 Regarding the operation manual	12
1.2 Regarding the symbol used	12
1.3 Regarding the power supply	12
1.4 Regarding children	12
1.5 Regarding intended use	12
1.6 If the appliance is defective	13
2. Unpacking and connection	13-14
2.1 Unpacking	13
2.2 Assembly	13
2.3 Using other nozzles & accessories	14
3. Operation	15-16
3.1 Vacuuming	15
3.2 Switching off and retracting cable	15
3.3 Storage	16
3.4 Emptying Dustbin	16
4. Filtration	16
5. Maintenance	17
6. FAQ and solutions	17

Appliance Parts & Diagram



Technical Data:

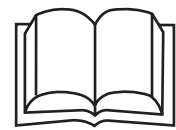
Product Type : SUPERSONIC Cylinder Vacuum Cleaner
Product Model: ZW0514
Rated Voltage/Frequency: 220V-50Hz
Rated Input power: 1200-1400w nom.
Max. Input power: 1400-1600w Max.
Power cord length: 8 meters
Noise: ≤68dBA Vacuum: ≥19KPA
Dust Capacity: 3L
Net Weight: 7.2Kgs Cleaner Size: 470mm×300mm×345mm

We reserve the right to make technical and design alterations in the course of ongoing product improvements.

*Shanghai TEK Electrical Sales Co. LTD.

1 Safety Instruction

1. 1 Regarding the operation manual



Read this operating manual through completely before working with the appliance. Keep the operating manual safe. If you pass the appliance on to a third party, give them the operating manual as well. Non-compliance with these instructions can lead to serious injuries or damage to the appliance. We assume no liability for damage that occurs as a result of non-compliance with this operating manual. The appliance may only be operated in households. It is not suitable for industrial or commercial use.

1. 2 Regarding the mark used in this instruction



WARNINGS:
Warns against hazards for your health and indicates possible risks of injury.

ATTENTION:
Indicates possible hazards for the appliance or other objects.

1. 3 Regarding the power supply



The appliance is operated with electrical power which means there is in principle a risk of electric shock. Pay particular attention to the following:

- Never touch the plug with wet hands.
- If you want to pull the plug out of the socket then always pull directly on the plug. Never pull on the cable as it could break.
- Make sure that the power cable is not bent, caught or run over, and that it does not come into contact with heat sources.
- Only use an extension cable that is designed for the power requirement of the appliance.

Never immerse the appliance in water or other fluids and keep it away from rain and moisture. Only operate the appliance if the electrical voltage stated on the type plate beneath the appliance matches the voltage on your socket. Wrong voltage can destroy the appliance.

1. 4 Regarding Children



Never leave the appliance unattended, and use it with the greatest of care if children or persons who cannot assess the risks are nearby. Children or persons who can not assess the risks may not use the appliance. Store it so it is inaccessible. Packing material must not be used to play with. There is a danger of suffocation.

1. 5 Regarding intended use



The cylinder vacuum cleaner must only be used for cleaning normally dirty floors, carpets and curtains. Any other use is considered non-intended use and is prohibited. In particular, the activities listed in the following may under no circumstances be carried out with the cylinder vacuum cleaner:

- Hot ash, burning cigarettes or matches. These can cause fire.
- Pointed objects such as, glass fragments, nails, etc. These objects destroy the filter.
- Water and other fluids, especially damp carpet cleaning agents. Internal

2 Unpacking and connecting

dampness can lead to a short-circuit.

- Toner (for laser printers, copy machines, etc.).

There is a risk of fire and explosion.

- Plaster, cement, etc. The filter can become blocked.
- Pieces of clothing (e.g. shoelaces, scarves, etc.).

They could be pulled right in and cause severe injuries.

- Hair, fingers and other body parts. They could be pulled right in and cause severe injuries.

1. 6 If the appliance is defective



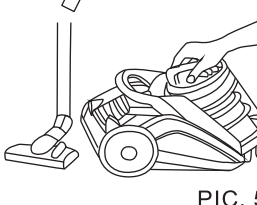
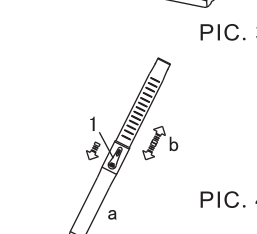
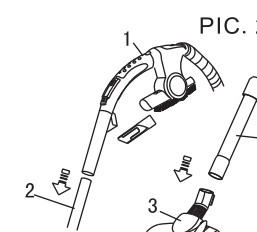
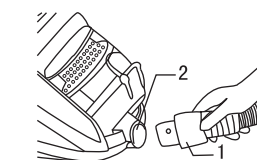
Never operate a defective appliance or an appliance with a defective cable. There is a considerable risk of injury. If this happens, please send the products to the specified professional agency nominated by our company to provide you with our after-sales service and maintenance. For detail: please find the relevant information in our Warranty Card.

2. 1 Unpacking

Before assembly, please ensure that you have received all the parts listed in the part list.

ATTENTION:
Always transport/send the appliance in its original packaging so to avoid damage.

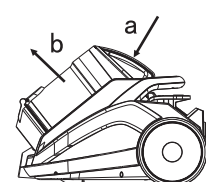
2. 2 Assembly



1. See Pic. 2: Insert the hose end (Pic. 2/1) into the main suction hole (Pic. 2/2) horizontally. Push till the very end until you can hear the "CLICK" sound to ensure the assembly properly in place.
2. Push the hose handle (Pic. 3/1) into the upper part of telescopic tube (Pic. 3/2)
3. Push the brush elbow (Pic. 3/3) into the lower connection of telescopic tube (Pic. 3/4)

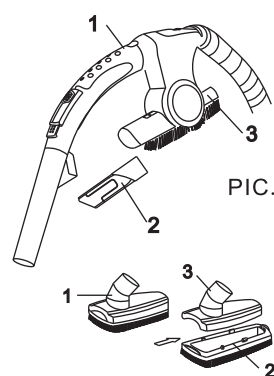
ATTENTION:
It might need certain force when connecting the parts to ensure good connection.

4. Adjust the telescopic tube length
Push forward (Pic. 4/a) the telescopic tube adjustment button (Pic. 4/1) until you get the required length.
5. Dust container assembly
See (Pic. 5): Put the dust container into the main body and press down until you hear the "click" sound to ensure the dust container is properly assembled into place.

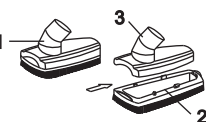


PIC. 6

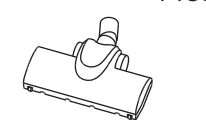
2. 3 Using other nozzles and accessories



PIC. 7



PIC. 8



PIC. 9



PIC. 9-1



PIC. 10

To take off the dust container, press the dustbin release button (Pic.6/a) and pull out the dustbin (Pic.6/b).

Except for the main nozzle: you can also use the other nozzles or accessories to expand the range of functions for your vacuum cleaner. Product includes a crevice tool and a 2 in 1 brush which are stored on the hose handle (Pic.7/1) through the handle accessory support.

- Crevice Nozzle(Pic.7/2)

Used for gap etc. hard-to-reach places.

- 2in1 brush (Pic.7/3) includes 2 parts.

Furniture brush (Pic.8/1)

Used for closet/door etc. places with delicate surface.

Upholstery brush (Pic.8/3)

By simply removing the bristle(Pic.8/2) from the 2 in 1 brush,you can get the upholstery brush(pic.8/3). Use this to clean soft, scratch resistance surfaces (e.g. upholstered furniture).

As an optional brush: your purchasing might include the big turbo nozzle (Pic.9) and mini turbo nozzle (Pic.9-1) which have a rotating brush bar used for deep cleaning on carpet & bed / sofa etc.

*Big turbo nozzle is only equipped in certain specified model. Please select the proper model based on your own requirment and need.

REMIND:

When using the turbo brush, a loud noise can occur as a result of the high speed of the brush. This is normal.

Bed-brush(Pic.10):

For quick cleaning of bed or sofa surface etc.

3 Operation

3. 1 Vacuuming

WARNING:

Check the cylinder vacuum cleaner and the power cable before each use. A damaged appliance must never be used. There is a risk of injury.

ATTENTION:

Only use the cylinder vacuum cleaner if all filters are correctly in place . The filters must not be damaged and must be dry. Non-compliance can damage the cylinder vacuum cleaner.

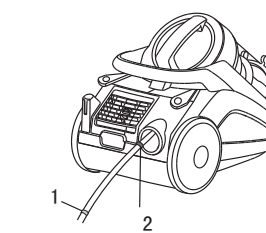
REMIND:

In order to avoid product overheat caused by possible blockage (such as blockage in brush/tube/hose or dust container full), this product has the safety valve and motor TOC to protect. In this case: the safety valve will work in first place to bring down the temperature. If this is not working then the motor TOC will work to cut off the product power supply. Please turn off the product and unplug from the socket until the product cools down, (It will take about 30 minutes) and then re-plug and turn on the power. Product will restart to work.

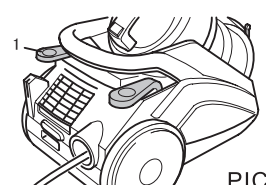
ATTENTION:

The TOC will not restart even if the product cools down if you have not turn off the product.

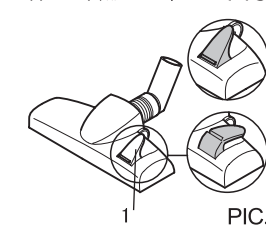
1. Push on the desired nozzle (See 2.3 Using other nozzles and accessories).
2. Pull out the power cord by holding the plug until the yellow mark (pic.11/1) is reached.



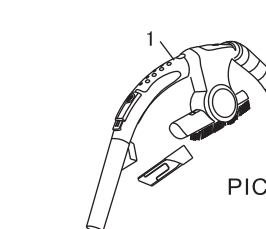
PIC. 11



PIC. 12

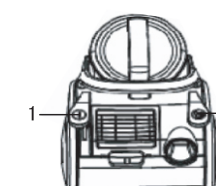


PIC. 13



PIC. 14

3. 2 Switch off and retract



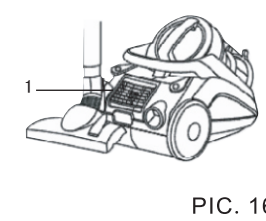
PIC. 15

1. Pushing the switch button (pic.15/1) to switch off the product and pull the plug out of the socket.
2. Hold the plug firmly in your hand.
3. Push the retract button(pic.15/2) to retract the cord into the body.

WARNING:

The power cable can whip around when being pulled in. Do hold the plug firmly in your hand to avoid tripping you or somebody else up or knocking down objects.

3. 3 Storage



While using the product, if you receive a phone call or you have other emergent things to deal with, then you only need to insert the brush into the parking slot on the rear part of the product(pic.16/1). It can offer the greatest convenient.

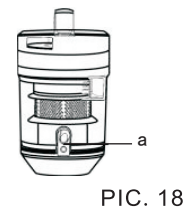
REMIND:
If you leave your work area, switch off the appliance .See the instructions under Chapter 3.2, "Switching off and retracting the power cable". This will help avoid accidents.

3. 4 Cleaner dustbin

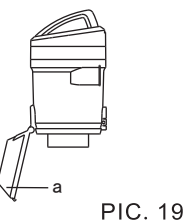
In order to ensure the best performance, we suggest to clean the dustbin when it reaches the MAX. Position(pic.17).



ATTENTION:
Always switch off the product before cleaning the dustbin(see Chapter3.2 Switching off and retracting the power cable") in order to avoid any possible damage to the products.

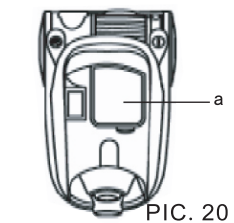


- 1.Take off the dustbin (see 2.2.5 Dust container assembly).
- 2.Place the dust container low above a dustbin(Pic.18).

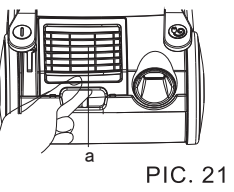


- 3.Press the dust container bottom cover release button (Pic.18/a) to release the bottom cover (Pic.19/a) .
- 4.Knock the dust container gently to empty the dust inside.
- 5.Close the bottom cover and re-assembly the dust container into the main body (see 2.2.5 Dust container assembly).

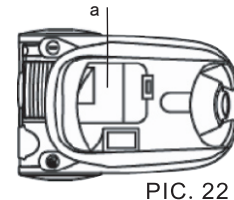
4 Filtration



- This product has used the following filtration:
1. Motor inlet filtration(Pic.20/a)
– To prevent any dust / obstacle from getting into the motor and causing damage to the products.

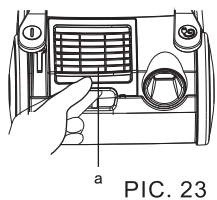


2. Motor outlet HEPA (pic.21/a)
– Filter the outlet air from motor to prevent re-pollution to the air.



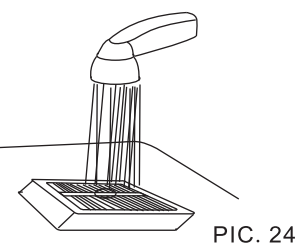
- Filtration Cleaning:
- 1.Open the motor inlet filter cover(Pic.22/a) and take out the motor inlet filter.

ATTENTION:
Please ensure to switch off the product (see 3.2 Switching off and retract the power cord) before taking out the motor inlet filter.



2. Open the air outlet grid(pic.23/a) on the rear part of the product and take out the HEPA.

ATTENTION:
Please ensure to switch off the product (see 3.2 Switching off and retract the power cord) before taking out the motor outlet HEPA filter.



*For an easy clean, hold the HEPA filter over a dustbin. Then knock it gently against allsides. If needed, wash the filter under tape water (Pic24). Do not brush the filter to avoid damage.

ATTENTION:
After cleaning, the filtration material must be completely dry before re-assembling into the product to avoid any possible damage to the products. We suggest to leave it in open air for at least 24 hours after cleaning.

5 Maintenance

1. All the maintenance and repair should be done only when the product is switched off and unplugged.
2. Clean the dust in the container regularly to avoid any possible damage.
3. Do not clean the product with oil-type liquid. Use only water or neutral cleaning material.
4. Avoid to place the product under direct sunshine or damp surrounding.

6 FAQ and solutions

For any possible problem on the product , please checked the following list to find possible solutions before contacting the service station. If it can not work then contact the shop where you buy the product or our specific service center (see detail in our Warranty Card).

Problems	Solutions
No working	1.Check if the plug are inserted into the socket properly, If necessary: unplug and re-plug again. 2.Check if the socket has power supply. 3.Check if the product is switched off.
Low suction	1.Check if the brush/hose or tube has been blocked. If so, please clear the blockage immediately. 2.Check if the filtration is full of dust. Clear the filtration regularly to ensure best performance.
Abnormal noise in motor	1.Stop using immediately. 2.Check if there is any blockage in brush/hose or tubes. Clear the blockage immediately.