



# Multiformat Progressive Scan/HDTV Encoder with Three 11-Bit DACs and 10-Bit Data Input

## ADV7195

### FEATURES

#### INPUT FORMATS

YCrCb in  $2 \times 10$ -Bit (4:2:2) or  $3 \times 10$ -Bit (4:4:4) Format-  
Compliant to SMPTE-293M (525p), ITU-R.BT1358 (625p), SMPTE274M (1080i), SMPTE296M (720p) and Any Other High-Definition Standard Using Async Timing Mode  
RGB in  $3 \times 10$  Bit (4:4:4) Format

#### OUTPUT FORMATS

YPrPb Progressive Scan (EIA-770.1, EIA-770.2)  
YPrPb HDTV (EIA-770.3)  
RGB Levels Compliant to RS-170 and RS-343A  
11-Bit + Sync (DAC A)  
11-Bit DACs (DAC B, DAC C)

#### PROGRAMMABLE FEATURES

Internal Test Pattern Generator with Color Control  
Y/C Delay ( $\pm$ )  
Gamma Correction  
Individual DAC On/Off Control  
54 MHz Output ( $2 \times$  Oversampling)  
Sharpness Filter with Programmable Gain/Attenuation  
Programmable Adaptive Filter Control  
Undershoot Limiter  
VBI Open Control  
I<sup>2</sup>C<sup>®</sup> Filter  
CGMS-A (525p)  
2-Wire Serial MPU Interface  
Single Supply 3.3 V Operation  
52-MQFP Package

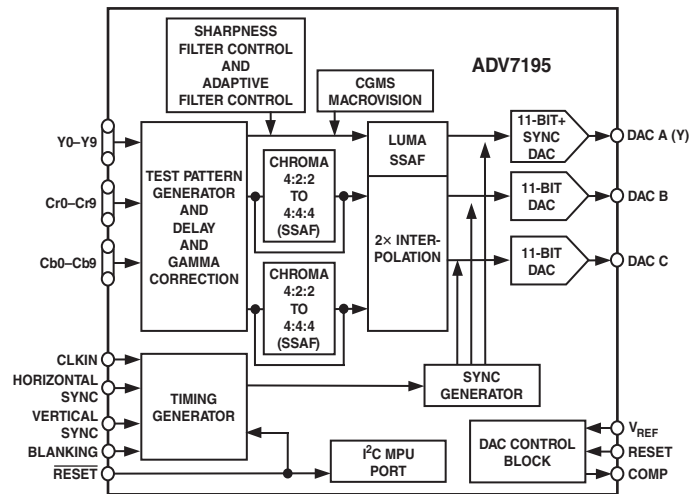
#### APPLICATIONS

Progressive Scan/HDTV Display Devices  
MPEG at 81 MHz  
Progressive Scan/HDTV Projection Systems  
Digital Video Systems  
High Resolution Color Graphics  
Image Processing/Instrumentation  
Digital Radio Modulation/Video Signal Reconstruction

### GENERAL DESCRIPTION

The ADV7195 is a triple high-speed, digital-to-analog encoder on a single monolithic chip. It consists of three high-speed video D/A converters with TTL-compatible inputs.

### FUNCTIONAL BLOCK DIAGRAM



The ADV7195 has three separate 10-bit-wide input ports that accept data in 4:4:4 10-bit YCrCb or RGB or 4:2:2 10-bit YCrCb. This data is accepted in progressive scan format at 27 MHz or HDTV format at 74.25 MHz or 74.1758 MHz. For any other high-definition standard but SMPTE293M, ITU-R BT.1358, SMPTE274M or SMPTE296M the Async Timing Mode can be used to input data to the ADV7195. For all standards, external horizontal, vertical, and blanking signals or EAV/SAV codes control the insertion of appropriate synchronization signals into the digital data stream and therefore the output signals.

The ADV7195 outputs analog YPrPb progressive scan format complying to EIA-770.1, EIA-770.2; YPrPb HDTV complying to EIA-770.3; RGB complying to RS-170/RS-343A.

The ADV7195 requires a single 3.3 V power supply, an optional external 1.235 V reference and a 27 MHz clock in Progressive Scan Mode or a 74.25 MHz (or 74.1758 MHz) clock in HDTV mode.

In Progressive Scan Mode, a sharpness filter with programmable gain allows high-frequency enhancement on the luminance signal. Programmable Adaptive Filter Control, which may be used, allows removal of ringing on the incoming Y data. The ADV7195 supports CGMS-A data control generation.

The ADV7195 is packaged in a 52-lead MQFP package.

I<sup>2</sup>C is a registered trademark of Philips Corporation.

### REV. A

Information furnished by Analog Devices is believed to be accurate and reliable. However, no responsibility is assumed by Analog Devices for its use, nor for any infringements of patents or other rights of third parties that may result from its use. No license is granted by implication or otherwise under any patent or patent rights of Analog Devices.

One Technology Way, P.O. Box 9106, Norwood, MA 02062-9106, U.S.A.  
Tel: 781/329-4700  
Fax: 781/326-8703  
[www.analog.com](http://www.analog.com)  
© Analog Devices, Inc., 2002

## TABLE OF CONTENTS

FEATURES .....	1	MODE REGISTER 3 .....	18
GENERAL DESCRIPTION .....	1	MR3 (MR37–MR30) .....	18
FUNCTIONAL BLOCK DIAGRAM .....	1	MR3 BIT DESCRIPTION .....	18
3.3 V SPECIFICATIONS .....	4	HDTV Enable (MR30) .....	18
3 V DYNAMIC-SPECIFICATIONS .....	4	Reserved (MR31–MR32) .....	18
3.3 V TIMING-SPECIFICATIONS .....	5	DAC A Control (MR33) .....	18
ABSOLUTE MAXIMUM RATINGS .....	8	DAC B Control (MR34) .....	18
ORDERING GUIDE .....	8	DAC C Control (MR35) .....	18
PIN CONFIGURATION .....	8	Interpolation (MR36) .....	18
PIN FUNCTION DESCRIPTIONS .....	9	Reserved (MR37) .....	18
FUNCTIONAL DESCRIPTION .....	10	MODE REGISTER 4 .....	18
Digital Inputs .....	10	MR4 (MR47–MR40) .....	18
Control Signals .....	10	MR4 BIT DESCRIPTION .....	18
Analog Outputs .....	10	Timing Reset (MR40) .....	18
Undershoot Limiter .....	10	MODE REGISTER 5 .....	18
I <sup>2</sup> C Filter .....	10	MR5 (MR57–MR50) .....	18
Internal Test Pattern Generator .....	10	MR5 BIT DESCRIPTION .....	18
Y/CrCb Delay .....	10	Reserved (MR50) .....	18
Gamma Correction .....	10	RGB Mode (MR51) .....	18
54 MHz Operation .....	10	Sync on PrPb (MR52) .....	18
PROGRAMMABLE SHARPNESS FILTER .....	10	Color Output Swap (MR53) .....	19
PROGRAMMABLE ADAPTIVE FILTER CONTROL ..	11	Gamma Curve (MR54) .....	19
INPUT/OUTPUT CONFIGURATION .....	11	Gamma Correction (MR55) .....	19
MPU PORT DESCRIPTION .....	11	Adaptive Mode Control (MR56) .....	19
REGISTER ACCESSES .....	13	Adaptive Filter Control (MR57) .....	19
REGISTER PROGRAMMING .....	13	COLOR Y .....	19
Subaddress Register (SR7–SR0) .....	13	CY (CY7–CY0) .....	19
Register Select (SR6–SR0) .....	13	COLOR CR .....	19
PROGRESSIVE SCAN MODE .....	14	CCR (CCR7–CCR0) .....	19
MODE REGISTER 0 .....	14	COLOR CB .....	19
MR0 (MR07–MR00) .....	14	CCB (CCB7–CCB0) .....	19
MR0 BIT DESCRIPTION .....	14	MODE REGISTER 6 .....	20
Output Standard Selection (MR00–MR01) ..	14	MR6 (MR67–MR60) .....	20
Input Control Signals (MR02–MR03) .....	14	MR6 BIT DESCRIPTION .....	20
Input Standard (MR04) .....	14	MR67–MR60 .....	20
Reserved (MR05) .....	14	CGMS DATA REGISTERS 2–0 .....	20
DV Polarity (MR06) .....	14	CGMS2 (CGMS27–CGMS20) .....	20
Reserved (MR07) .....	14	CGMS1 (CGMS17–CGMS10) .....	20
MODE REGISTER 1 .....	16	CGMS0 (CGMS07–CGMS00) .....	20
MR1 (MR17–MR10) .....	16	FILTER GAIN .....	21
MR1 BIT DESCRIPTION .....	16	FG (FG7–FG0) .....	21
Pixel Data Enable (MR10) .....	16	FG BIT DESCRIPTION .....	21
Input Format (MR11) .....	16	Filter Gain A (FG3–FG0) .....	21
Test Pattern Enable (MR12) .....	16	Filter Gain B (FG4–FG7) .....	21
Test Pattern Hatch/Frame (MR13) .....	16	GAMMA CORRECTION REGISTERS 0–13 ..	21
VBI Open (MR14) .....	16	(GAMMA CORRECTION 0–13) .....	21
Undershoot Limiter (MR15–MR16) .....	16	SHARPNESS FILTER CONTROL AND ..	22
Sharpness Filter (MR17) .....	16	ADAPTIVE FILTER CONTROL .....	22
MODE REGISTER 2 .....	17	SHARPNESS FILTER MODE .....	22
MR1 (MR27–MR20) .....	17	ADAPTIVE FILTER MODE .....	22
MR2 BIT DESCRIPTION .....	17	ADAPTIVE FILTER GAIN 1 .....	23
Y Delay (MR20–MR22) .....	17	AFG1 (AFG1)7–0 .....	23
Color Delay (MR23–MR25) .....	17	ADAPTIVE FILTER GAIN 2 .....	23
CGMS Enable (MR26) .....	17	AFG2 (AFG2)7–0 .....	23
CGMS CRC (MR27) .....	17	ADAPTIVE FILTER GAIN 3 .....	23
		AFG3 (AFG3)7–0 .....	23

ADAPTIVE FILTER THRESHOLD A .....	23	Color Delay (MR23–MR25) .....	28
AFTA AFTA7–0 .....	23	Reserved (MR26–MR27) .....	28
ADAPTIVE FILTER THRESHOLD B .....	23	MODE REGISTER 3 .....	28
AFTB AFTB7–0 .....	23	MR3 (MR37–MR30) .....	28
ADAPTIVE FILTER THRESHOLD C .....	23	MR3 BIT DESCRIPTION .....	28
AFTC AFTC7–0 .....	23	HDTV Enable (MR30) .....	28
SHARPNESS FILTER AND ADAPTIVE FILTER		Reserved (MR31–MR32) .....	28
APPLICATIONS EXAMPLES .....	24	DAC A Control (MR33) .....	28
Sharpness Filter Application .....	24	DAC B Control (MR34) .....	28
Adaptive Filter Control Application .....	25	DAC C Control (MR35) .....	28
HDTV MODE .....	26	Reserved (MR36–MR37) .....	28
MODE REGISTER 0 .....	26	MODE REGISTER 4 .....	29
MR0 (MR07–MR00) .....	26	MR4 (MR47–MR40) .....	29
MR0 BIT DESCRIPTION .....	26	MR4 BIT DESCRIPTION .....	29
Output Standard Selection (MR00–MR01) .....	26	Timing Reset (MR40) .....	29
Input Control Signals (MR02–MR03) .....	26	Reserved (MR41–MR47) .....	29
Reserved (MR04) .....	26	MODE REGISTER 5 .....	29
Input Standard (MR05) .....	26	MR5 (MR57–MR50) .....	29
DV Polarity (MR06) .....	26	MR5 BIT DESCRIPTION .....	29
Reserved (MR07) .....	26	Reserved (MR50) .....	29
MODE REGISTER 1 .....	27	RGB Mode (MR51) .....	29
MR1 (MR17–MR10) .....	27	Sync on PrPb (MR52) .....	29
MR1 BIT DESCRIPTION .....	27	Color Output Swap (MR53) .....	29
Pixel Data Enable (MR10) .....	27	Reserved (MR54–MR57) .....	29
Input Format (MR11) .....	27	DAC TERMINATION AND LAYOUT	
Test Pattern Enable (MR12) .....	27	CONSIDERATIONS .....	30
Test Pattern Hatch/Frame (MR13) .....	27	Voltage Reference .....	30
VBI Open (MR14) .....	27	PC BOARD LAYOUT CONSIDERATIONS .....	30
Reserved (MR15–MR17) .....	27	Supply Decoupling .....	31
MODE REGISTER 2 .....	28	Digital Signal Interconnect .....	31
MR1 (MR27–MR20) .....	28	Analog Signal Interconnect .....	31
MR2 BIT DESCRIPTION .....	28	Video Output Buffer and Optional Output Filter .....	31
Y Delay (MR20–MR22) .....	28	OUTLINE DIMENSIONS .....	36

# ADV7195—SPECIFICATIONS

## 3.3 V SPECIFICATIONS ( $V_{AA} = 3.15\text{ V}$ to $3.45\text{ V}$ , $V_{REF} = 1.235\text{ V}$ , $R_{SET} = 2470\ \Omega$ , $R_{LOAD} = 300\ \Omega$ . All specifications $T_{MIN}$ to $T_{MAX}$ [0°C to 70°C] unless otherwise noted, $TJ_{MAX} = 110^\circ\text{C}$ .)

Parameter	Min	Typ	Max	Unit	Test Conditions
STATIC PERFORMANCE					
Resolution (Each DAC)		11		Bits	
Integral Nonlinearity <sup>1</sup>		1.5		LSB	
Differential Nonlinearity <sup>1</sup>		0.9	2.0	LSB	
DIGITAL OUTPUTS					
Output Low Voltage, V <sub>OL</sub>	2.4		0.4	V	I <sub>SINK</sub> = 3.2 mA I <sub>SOURCE</sub> = 400 μA V <sub>IN</sub> = 0.4 V
Output High Voltage, V <sub>OH</sub>				V	
Three-State Leakage Current			10	μA	
Three-State Output Capacitance		4	pF		
DIGITAL AND CONTROL INPUTS					
Input High Voltage, V <sub>IH</sub>	2			V	V <sub>IN</sub> = 0.0 V or V <sub>DD</sub>
Input Low Voltage, V <sub>IL</sub>		0.8	0.65	V	
Input Current, I <sub>IN</sub>		0		μA	
Input Capacitance, C <sub>IN</sub>		4		pF	
ANALOG OUTPUTS					
Full-Scale Output Current	3.92	4.25	4.56	mA	DAC A
	2.54	2.83	3.11	mA	DAC B, DAC C
Output Current Range	3.92	4.25	4.56	mA	DAC A
	2.39	2.66	2.93	mA	DAC B, DAC C
DAC-to-DAC Matching		1.4		%	
Output Compliance Range, V <sub>OC</sub>	0	1.4		V	
Output Impedance, R <sub>OUT</sub>		100		kΩ	
Output Capacitance, C <sub>OUT</sub>		7		pF	
VOLTAGE REFERENCE (External)					
Reference Range, V <sub>REF</sub>	1.112	1.235	1.359	V	
POWER REQUIREMENTS					
I <sub>DD</sub> <sup>2</sup>		25	35	mA	1× Interpolation
		51	60	mA	2× Interpolation
		40		mA	HDTV Mode (With f <sub>CLK</sub> = 7425 MHz)
I <sub>AA</sub> <sup>3, 4</sup>		11	15	mA	1× Interpolation, 2× Interpolation, and HDTV Mode
I <sub>PLL</sub>		6.0	12	mA	1× Interpolation, 2× Interpolation, and HDTV Mode
Power Supply Rejection Ratio		0.01		%/%	

### NOTES

<sup>1</sup>Guaranteed by characterization.

<sup>2</sup> $I_{DD}$  or the circuit current is the continuous current required to drive the digital core without  $I_{PLL}$ .

<sup>3</sup> $I_{AA}$  is the total current required to supply all DACs, including the  $V_{REF}$  circuitry.

<sup>4</sup>All DACs On.

Specifications subject to change without notice.

## 3 V DYNAMIC—SPECIFICATIONS ( $V_{AA} = 3.15\text{ V}$ to $3.45\text{ V}$ , $V_{REF} = 1.235\text{ V}$ , $R_{SET} = 2470\ \Omega$ , $R_{LOAD} = 300\ \Omega$ . All specifications $T_{MIN}$ to $T_{MAX}$ [0°C to 70°C] unless otherwise noted.)

Parameter	Min	Typ	Max	Unit
Luma Bandwidth		13.5		MHz
Chroma Bandwidth		6.75		MHz
Signal-to-Noise Ratio		64		dB Luma Ramp Unweighted
Chroma/Luma Delay Inequality		0		ns

Specifications subject to change without notice.

## 3.3 V TIMING—SPECIFICATIONS

( $V_{AA} = 3.15\text{ V to }3.45\text{ V}$ ,  $V_{REF} = 1.235\text{ V}$ ,  $R_{SET} = 2470\ \Omega$ ,  $R_{LOAD} = 300\ \Omega$ . All specifications  $T_{MIN}$  to  $T_{MAX}$  [0°C to 70°C] unless otherwise noted.)

Parameter	Min	Typ	Max	Unit	Conditions
MPU PORT <sup>1</sup>					
SCLOCK Frequency	0		400	kHz	After this Period the 1st Clock Is Generated Relevant for Repeated Start Condition
SCLOCK High Pulsewidth, $t_1$	0.6			$\mu\text{s}$	
SCLOCK Low Pulsewidth, $t_2$	1.3			$\mu\text{s}$	
Hold Time (Start Condition), $t_3$	0.6			$\mu\text{s}$	
Setup Time (Start Condition), $t_4$	0.6			$\mu\text{s}$	
Data Setup Time, $t_5$	100			ns	
SDATA, SCLOCK Rise Time, $t_6$			300	ns	
SDATA, SCLOCK Fall Time, $t_7$			300	ns	
Setup Time (Stop Condition), $t_8$	0.6			$\mu\text{s}$	
RESET Low Time	100			ns	
ANALOG OUTPUTS					
Analog Output Delay, $t_6$ <sup>2</sup>		10		ns	
Analog Output Skew		0.5		ns	
CLOCK CONTROL AND PIXEL PORT <sup>3</sup>					
$f_{CLK}$		27		MHz	Progressive Scan Mode
		74.25		MHz	HDTV Mode
		81		MHz	ASYNCR Timing Mode and 1× Interpolation
Clock High Time, $t_9$	5.0	21.5		ns	For 4:4:4 Pixel Input Format at 1× Oversampling For 4:4:4 or 4:2:2 Pixel Input Format at 2× Oversampling
Clock Low Time, $t_{10}$	5.0	22.0		ns	
Data Setup Time, $t_{11}$	2.0	3.4		ns	
Data Hold Time, $t_{12}$	4.5	3.2		ns	
Control Setup Time, $t_{11}$	7.0	3.4		ns	
Control Hold Time, $t_{12}$	4.0	3.2		ns	
Pipeline Delay	16			Clock Cycles	
Pipeline Delay	29			Clock Cycles	

## NOTES

<sup>1</sup>Guaranteed by characterization.

<sup>2</sup>Output delay measured from 50% point of rising edge of CLOCK to the 50% point of DAC output full-scale transition.

<sup>3</sup>Data: Cb/Cr(9–0), Cr(9–0), Y(9–0); Control:  $\overline{HSYNC}/\overline{SYNC}$ ,  $\overline{VSYNC}/\overline{TSYNC}$ , DV.

Specifications subject to change without notice.

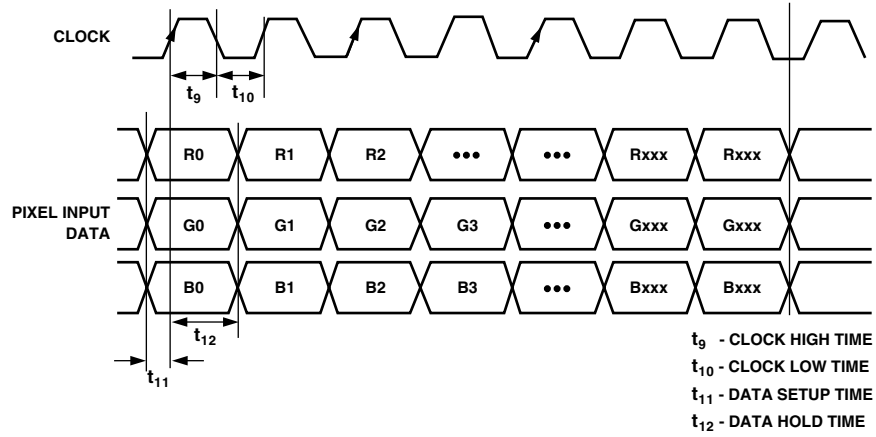


Figure 1. 4:4:4 RGB Input Data Format Timing Diagram

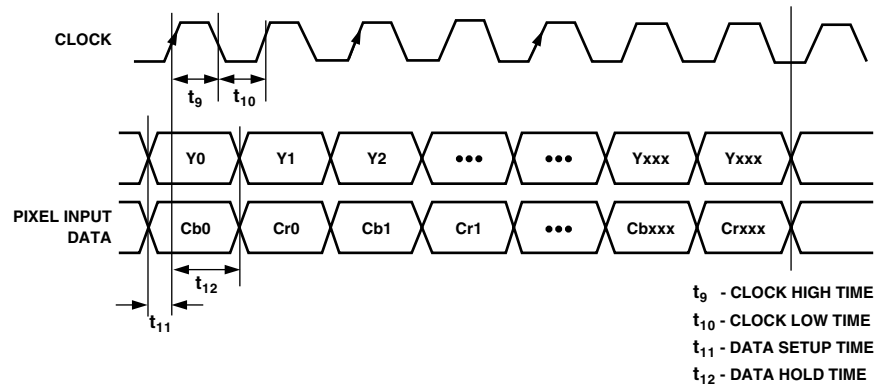


Figure 2. 4:2:2 Input Data Format Timing Diagram

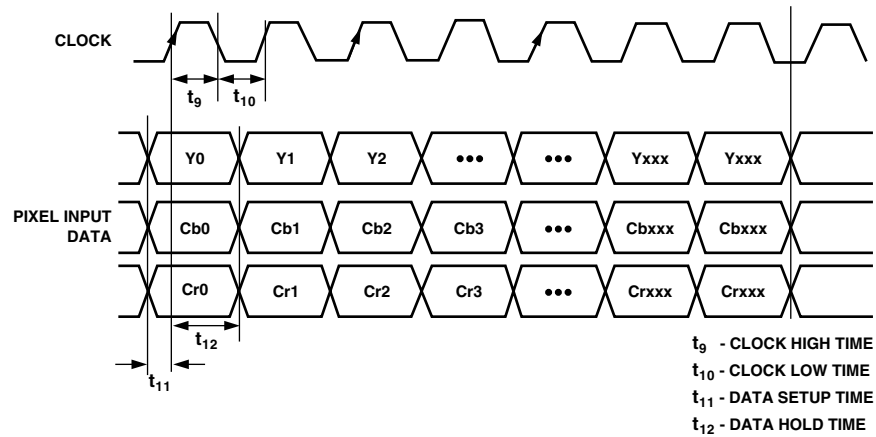


Figure 3. 4:4:4 YCrCb Input Data Format Timing Diagram

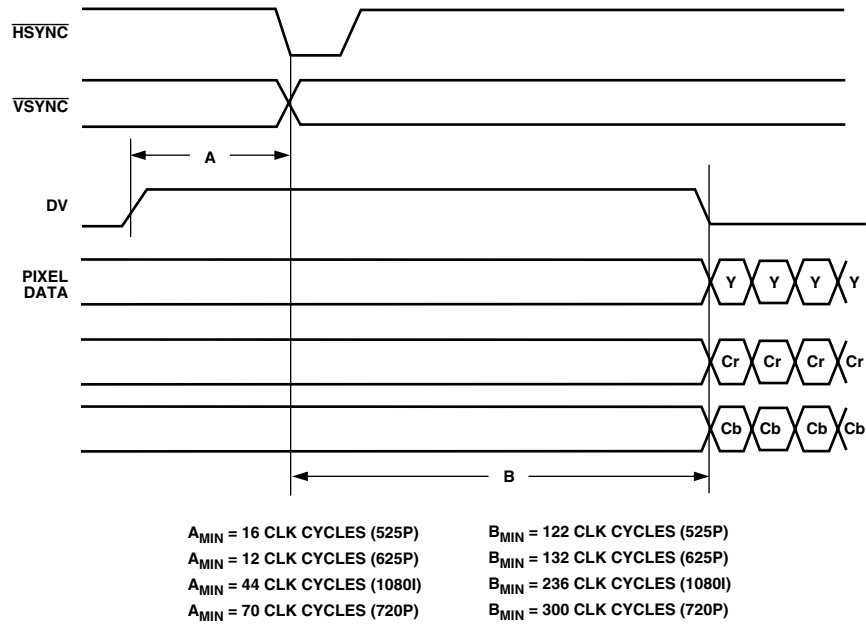


Figure 4. Input Timing Diagram

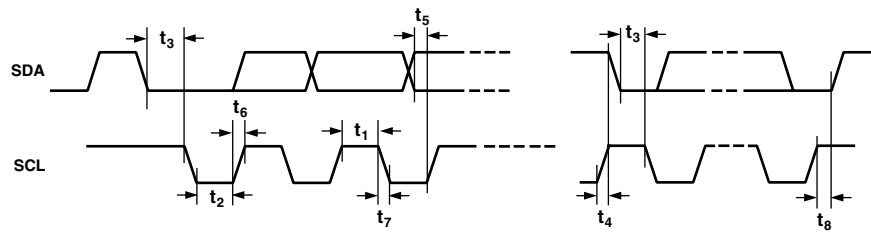


Figure 5. MPU Port Timing Diagram

# ADV7195

## ABSOLUTE MAXIMUM RATINGS<sup>1</sup>

V <sub>AA</sub> to GND	7 V
Voltage on Any Digital Pin	GND – 0.5 V to V <sub>AA</sub> + 0.5 V
Ambient Operating Temperature (T <sub>A</sub> )	–40°C to +85°C
Storage Temperature (T <sub>S</sub> )	–65°C to +150°C
Infrared Reflow Soldering (20 sec)	225°C
Vapor Phase Soldering (1 minute)	220°C
I <sub>OUT</sub> to GND <sup>2</sup>	0 V to V <sub>AA</sub>

## NOTES

<sup>1</sup>Stresses above those listed under Absolute Maximum Ratings may cause permanent damage to the device. This is a stress rating only; functional operation of the device at these or any other conditions above those listed in the operational sections of this specification is not implied. Exposure to absolute maximum rating conditions for extended periods may affect device reliability.

<sup>2</sup>Analog Output Short Circuit to any Power Supply or Common can be of an indefinite duration.

## ORDERING GUIDE

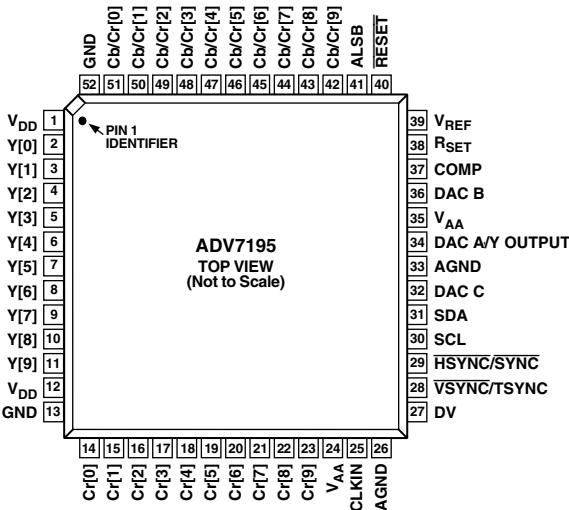
Model	Temperature Range	Package Description	Package Option
ADV7195KS	0°C to 70°C	Plastic Quad Flatpack	S-52

## CAUTION

ESD (electrostatic discharge) sensitive device. Electrostatic charges as high as 4000 V readily accumulate on the human body and test equipment and can discharge without detection. Although the ADV7195 features proprietary ESD protection circuitry, permanent damage may occur on devices subjected to high energy electrostatic discharges. Therefore, proper ESD precautions are recommended to avoid performance degradation or loss of functionality.



## PIN CONFIGURATION





## PIN FUNCTION DESCRIPTIONS

Pin	Mnemonic	Input/Output	Function
1, 12	V <sub>DD</sub>	P	Digital Power Supply
2–11	Y0–Y9	I	10-Bit Progressive Scan/HDTV Input Port for Y Data. Input for G data when RGB data is input.
13, 52	GND	G	Digital Ground
14–23	Cr0–Cr9	I	10-Bit Progressive Scan/HDTV Input Port for Color Data in 4:4:4 Input Mode. In 4:2:2 mode this input port is not used. Input port for R data when RGB data is input.
24, 35	V <sub>AA</sub>	P	Analog Power Supply
25	CLKIN	I	Pixel Clock Input. Requires a 27 MHz reference clock for standard operation in Progressive Scan Mode or a 74.25 MHz (74.1758 MHz) reference clock in HDTV mode.
26, 33	AGND	G	Analog Ground
27	DV	I	Video Blanking Control Signal Input
28	$\overline{\text{VSYNC}}$ / TSYNC	I	$\overline{\text{VSYNC}}$ , Vertical Sync Control Signal Input or TSYNC Input Control Signal in Async Timing Mode
29	$\overline{\text{HSYNC}}$ / $\overline{\text{SYNC}}$	I	$\overline{\text{HSYNC}}$ , Horizontal Sync Control Signal Input or $\overline{\text{SYNC}}$ Input Control Signal in Async Timing Mode
30	SCL	I	MPU Port Serial Interface Clock Input
31	SDA	I/O	MPU Port Serial Data Input/Output
32	DAC C	O	Color Component Analog Output of Input Data on Cb/Cr9–0 Input Pins
34	DAC A	O	Y Analog Output
36	DAC B	O	Color Component Analog Output of Input Data on Cr9–Cr0 Input Pins
37	COMP	O	Compensation Pin for DACs. Connect 0.1 $\mu\text{F}$ Capacitor from COMP pin to V <sub>AA</sub> .
38	R <sub>SET</sub>	I	A 2470 $\Omega$ resistor for input ranges 64–940 and 64–960 (output standards EIA-770.1–EIA-770.3) must be connected from this pin to ground and is used to control the amplitudes of the DAC outputs. For input ranges 0–1023 (output standards RS-170, RS-343A) the R <sub>SET</sub> value must be 2820 $\Omega$ .
39	V <sub>REF</sub>	I/O	Optional External Voltage Reference Input for DACs or Voltage Reference Output (1.235 V)
40	$\overline{\text{RESET}}$	I	This input resets the on-chip timing generator and sets the ADV7195 into Default Register setting. Reset is an active low signal.
41	ALSB	I	TTL Address Input. This signal sets up the LSB of the MPU address. When this pin is tied high, the I <sup>2</sup> C filter is activated, which reduces noise on the I <sup>2</sup> C Interface. When this pin is tied low, the input bandwidth on the I <sup>2</sup> C interface is increased.
42–51	Cb/Cr9–0	I	10-Bit Progressive scan/HDTV input port for color data. In 4:2:2 mode the multiplexed CrCb data must be input on these pins. Input port for B data when RGB is input.

# ADV7195

## FUNCTIONAL DESCRIPTION

### Digital Inputs

The digital inputs of the ADV7195 are TTL-compatible. 30-bit YCrCb or RGB pixel data in 4:4:4 format or 20-bit YCrCb pixel data in 4:2:2 format is latched into the device on the rising edge of each clock cycle at 27 MHz in Progressive Scan Mode or 74.25 MHz or 74.1785 MHz in HDTV mode. It is also possible to input  $3 \times$  bit RGB data in 4:4:4 format to the ADV7195. It is recommended to input data in 4:2:2 mode to make use of the chroma SSAFs on the ADV7195. As can be seen in Figures 6 and 7, this filter has 0 dB passband response and prevents signal components being loaded back into the frequency band. In 4:4:4 input mode, the video data is already interpolated by the external input device and the chroma SSAFs of the ADV7195 are bypassed.

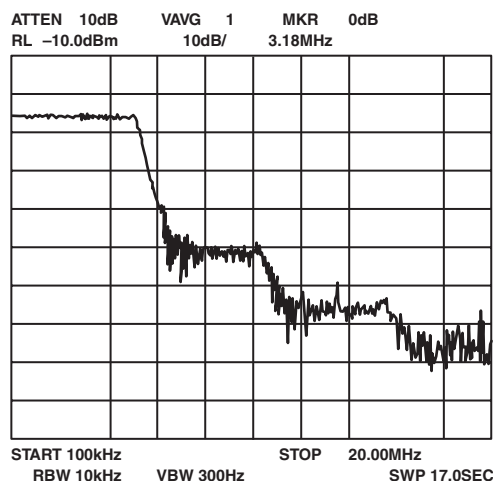


Figure 6. ADV7195 SSAF Response to a 2.5 MHz Chroma Sweep Using 4:2:2 Input Mode

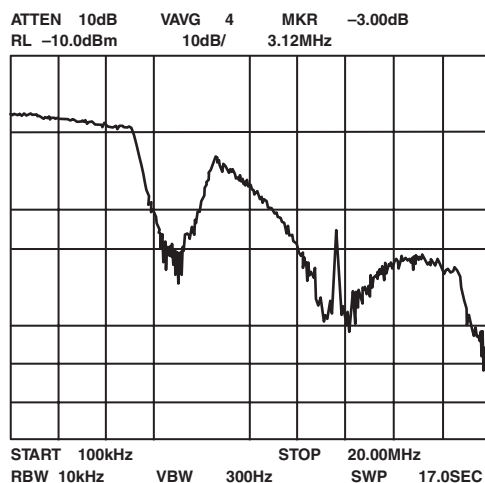


Figure 7. Conventional Filter Response to a 2.5 MHz Chroma Sweep Using 4:4:4 Input Mode

### Control Signals

The ADV7195 accepts sync control signals accompanied by valid 4:2:2 or 4:4:4 data. These external horizontal, vertical, and blanking pulses (or EAV/SAV codes) control the insertion of appropriate sync information into the output signals.

### Analog Outputs

The analog Y signal is output on the 11-bit + Sync DAC A, the color component analog signals on the 11-bit DAC B and DAC C conforming to EIA-770.1 or EIA-770.2 standards in PS mode or EIA-770.3 in HDTV mode.  $R_{SET}$  has a value of  $2470 \Omega$  (EIA-770.1, EIA-770.2, EIA-770.3),  $R_{LOAD}$  has a value of  $300 \Omega$ . For RGB outputs conforming to RS-170/RS-343A output standards  $R_{SET}$  must have a value of  $2820 \Omega$ .

### Undershoot Limiter

A limiter can be applied to the Y data before it is applied to the DACs. Available limit values are -1.5 IRE, -6 IRE, -11 IRE below blanking. This functionality is available in Progressive Scan Mode only.

### I<sup>2</sup>C Filter

A selectable internal I<sup>2</sup>C filter allows significant noise reductions on the I<sup>2</sup>C interface. In setting ALSB high, the input bandwidth on the I<sup>2</sup>C lines is reduced and pulses of less than 50 ns are not passed to the I<sup>2</sup>C controller. Setting ALSB low allows greater input bandwidth on the I<sup>2</sup>C lines.

### Internal Test Pattern Generator

The ADV7195 can generate a crosshatch pattern (white lines against a black background). Additionally, the ADV7195 can output a uniform color pattern. The color of the lines or uniform field/frame can be programmed by the user.

### Y/CrCb Delay

The Y output and the color component outputs can be delayed wrt the falling edge of the horizontal sync signal by up to four clock cycles.

### Gamma Correction

Gamma correction may be performed on the luma data. The user has the choice to use either of two different gamma curves, A or B. At any one time one of these curves is operational if gamma correction is enabled. Gamma correction allows the mapping of the luma data to a user-defined function.

### 54 MHz Operation

In Progressive Scan mode, it is possible to operate the three output DACs at 54 MHz or 27 MHz. The ADV7195 is supplied with a 27 MHz clock synced with the incoming data. If required, a second stage interpolation filter interpolates the data to 54 MHz before it is applied to the three output DACs.

The second stage interpolation filter is controlled by MR36. After applying a Reset, it is recommended to toggle this bit. Before toggling this bit, 3Ehex must be written to Address 09hex.

### PROGRAMMABLE SHARPNESS FILTER

Sharpness Filter Mode is applicable to the Y data only in Progressive Scan Mode.

The desired frequency response can be chosen by the user in programming the correct value via the I<sup>2</sup>C. The variation of frequency responses can be seen in the figures on the following pages.

## PROGRAMMABLE ADAPTIVE FILTER CONTROL

If the Adaptive Filter Mode is enabled (Progressive Scan Mode only), it is possible to compensate for large edge transitions on the incoming Y data. Sensitivity and attenuation are all programmable over the I<sup>2</sup>C. For further information refer to Sharpness Filter Control and Adaptive Filter Control section.

## INPUT/OUTPUT CONFIGURATION

Table I shows possible input/output configurations when using the ADV7195.

Table I.

Input Format	Output
YCrCb Progressive Scan	2×
4:2:2	1× or 2×
4:4:4	
YCrCb HDTV	1×
4:2:2	1×
4:4:4	
RGB Progressive Scan	2×
4:4:4	
RGB HDTV	1×
4:4:4	
Async Timing Mode	1×
All Inputs	1×

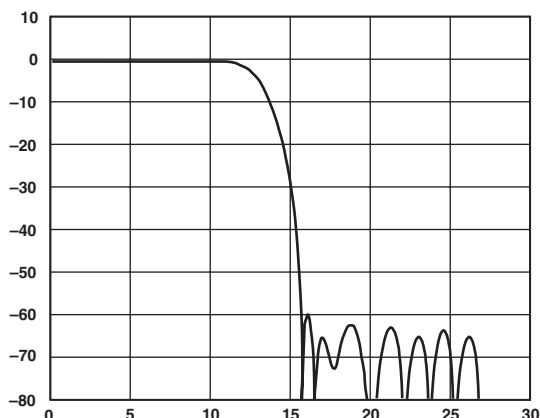


Figure 8. 2× Interpolation Filter 4-Channel

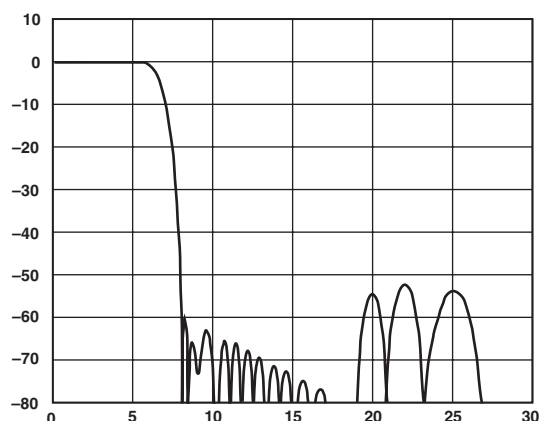


Figure 9. Interpolation Filter–CrCb Channels/Cr 4:2:2 Input Data

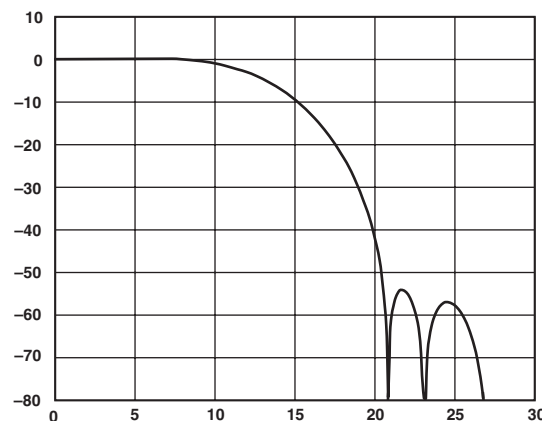


Figure 10. Interpolation Filter–CrCb Channels/Cr 4:4:4 Input Data

## MPU PORT DESCRIPTION

The ADV7195 support a 2-wire serial (I<sup>2</sup>C-compatible) micro-processor bus driving multiple peripherals. Two inputs, Serial Data (SDA) and Serial Clock (SCL) carry information between any device connected to the bus. Each slave device is recognized by a unique address. The ADV7195 has four possible slave addresses for both read and write operations. These are unique addresses for each device and are illustrated in Figure 11. The LSB sets either a read or write operation. Logic Level “1” corresponds to a read operation while Logic Level “0” corresponds to a write operation. A1 is set by setting the ALSB pin of the ADV7195 to Logic Level “0” or Logic Level “1.” When ALSB is set to “0,” there is greater input bandwidth on the I<sup>2</sup>C lines, which allows high-speed data transfers on this bus. When ALSB is set to “1,” there is reduced input bandwidth on the I<sup>2</sup>C lines, which means that pulses of less than 50 ns will not pass into the I<sup>2</sup>C internal controller. This mode is recommended for noisy systems.

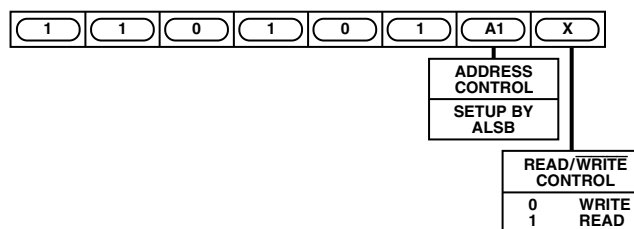


Figure 11. Slave Address

To control the various devices on the bus the following protocol must be followed. First the master initiates a data transfer by establishing a Start condition, defined by a high-to-low transition on SDA while SCL remains high. This indicates that an address/data stream will follow. All peripherals respond to the Start condition and shift the next eight bits (7-bit address + R/W bit). The bits are transferred from MSB down to LSB. The peripheral that recognizes the transmitted address responds by pulling the data line low during the ninth clock pulse. This is known as an acknowledge bit. All other devices withdraw from the bus at this point and maintain an idle condition. The idle condition is where the device monitors the SDA and SCL lines waiting for the Start condition and the correct transmitted address. The R/W bit determines the direction of the data.

# ADV7195

A Logic “0” on the LSB of the first byte means that the master will write information to the peripheral. A Logic “1” on the LSB of the first byte means that the master will read information from the peripheral.

The ADV7195 acts as a standard slave device on the bus. The data on the SDA pin is 8 bits long supporting the 7-bit addresses plus the R/W bit. It interprets the first byte as the device address and the second byte as the starting subaddress. The subaddresses autoincrement, allowing data to be written to or read from the starting subaddress. A data transfer is always terminated by a Stop condition. The user can also access any unique subaddress register on a one-by-one basis without having to update all the registers.

Stop and Start conditions can be detected at any stage during the data transfer. If these conditions are asserted out of sequence with normal read and write operations, they cause an immediate jump to the idle condition. During a given SCL high period the user should issue only one Start condition, one Stop condition or a single Stop condition followed by a single Start condition. If an invalid subaddress is issued by the user, the ADV7195 will not issue an acknowledge and will return to the idle condition. If

in autoincrement mode, the user exceeds the highest subaddress, the following action will be taken:

- 1. In Read Mode, the highest subaddress register contents will continue to be output until the master device issues a no-acknowledge. This indicates the end of a read. A no-acknowledge condition is where the SDA line is not pulled low on the ninth pulse.
- 2. In Write Mode, the data for the invalid byte will not be loaded into any subaddress register, a no-acknowledge will be issued by the ADV7195 and the part will return to the idle condition.

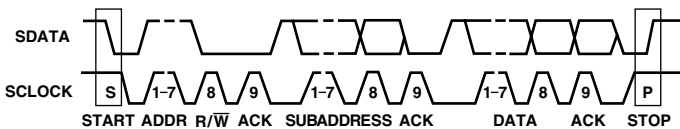


Figure 12. Bus Data Transfer

Figure 12 illustrates an example of data transfer for a read sequence and the Start and Stop conditions.

Figure 13 shows bus write and read sequences.

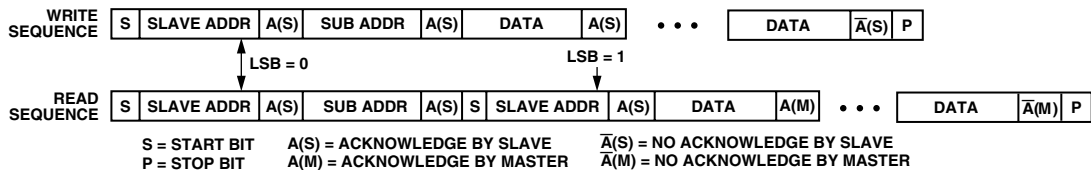


Figure 13. Write and Read Sequence

## REGISTER ACCESSES

The MPU can write to or read from all of the registers of the ADV7195 except the Subaddress Registers, which are write-only registers. The Subaddress Register determines which register the next read or write operation accesses.

All communications with the part through the bus begin with an access to the Subaddress Register. A read/write operation is performed from/to the target address which then increments to the next address until a Stop command on the bus is performed.

## REGISTER PROGRAMMING

The following section describes the functionality of each register. All registers can be read from as well as written to unless otherwise stated.

### Subaddress Register (SR7–SR0)

The Communications Register is an 8-bit write-only register. After the part has been accessed over the bus and a read/write operation is selected, the subaddress is set up. The Subaddress Register determines to/from which register the operation takes place.

Figure 14 shows the various operations under the control of the Subaddress Register. “0” should always be written to SR7.

### Register Select (SR6–SR0)

These bits are set up to point to the required starting address.

SR7	SR6	SR5	SR4	SR3	SR2	SR1	SR0	
SR7	ADV7195 SUBADDRESS REGISTER							
ZERO SHOULD BE WRITTEN HERE	ADDRESS	SR6	SR5	SR4	SR3	SR2	SR1	SR0
	00h	0	0	0	0	0	0	MODE REGISTER 0
	01h	0	0	0	0	0	0	MODE REGISTER 1
	02h	0	0	0	0	0	1	MODE REGISTER 2
	03h	0	0	0	0	0	1	MODE REGISTER 3
	04h	0	0	0	0	1	0	MODE REGISTER 4
	05h	0	0	0	0	1	0	MODE REGISTER 5
	06h	0	0	0	0	1	1	COLOR Y
	07h	0	0	0	0	1	1	COLOR CR
	08h	0	0	0	1	0	0	COLOR CB
	09h	0	0	0	1	0	0	MODE REGISTER 6
	0Ah	0	0	0	1	0	1	RESERVED
	0Bh	0	0	0	1	0	1	RESERVED
	0Ch	0	0	0	1	1	0	RESERVED
	0Dh	0	0	0	1	1	0	RESERVED
	0Eh	0	0	0	1	1	1	RESERVED
	0Fh	0	0	0	1	1	1	RESERVED
	10h	0	0	1	0	0	0	FILTER GAIN
	11h	0	0	1	0	0	0	CGMS DATA REGISTER 0
	12h	0	0	1	0	0	1	CGMS DATA REGISTER 1
	13h	0	0	1	0	0	1	CGMS DATA REGISTER 2
	14h	0	0	1	0	1	0	GAMMA CORRECTION REGISTER 0
	15h	0	0	1	0	1	0	GAMMA CORRECTION REGISTER 1
	16h	0	0	1	0	1	1	GAMMA CORRECTION REGISTER 2
	17h	0	0	1	0	1	1	GAMMA CORRECTION REGISTER 3
	18h	0	0	1	1	0	0	GAMMA CORRECTION REGISTER 4
	19h	0	0	1	1	0	0	GAMMA CORRECTION REGISTER 5
	1Ah	0	0	1	1	0	1	GAMMA CORRECTION REGISTER 6
	1Bh	0	0	1	1	0	1	GAMMA CORRECTION REGISTER 7
	1Ch	0	0	1	1	1	0	GAMMA CORRECTION REGISTER 8
	1Dh	0	0	1	1	1	0	GAMMA CORRECTION REGISTER 9
	1Eh	0	0	1	1	1	1	GAMMA CORRECTION REGISTER 10
	1Fh	0	0	1	1	1	1	GAMMA CORRECTION REGISTER 11
	20h	0	1	0	0	0	0	GAMMA CORRECTION REGISTER 12
	21h	0	1	0	0	0	0	GAMMA CORRECTION REGISTER 13
	22h	0	1	0	0	0	1	ADAPTIVE FILTER GAIN 1
	23h	0	1	0	0	0	1	ADAPTIVE FILTER GAIN 2
	24h	0	1	0	0	1	0	ADAPTIVE FILTER GAIN 3
	25h	0	1	0	0	1	0	ADAPTIVE FILTER THRESHOLD A
	26h	0	1	0	0	1	1	ADAPTIVE FILTER THRESHOLD B
	27h	0	1	0	0	1	1	ADAPTIVE FILTER THRESHOLD C

Figure 14. Subaddress Registers in Progressive Scan Mode

SR7	SR6	SR5	SR4	SR3	SR2	SR1	SR0		
SR7	ADV7195 SUBADDRESS REGISTER								
ZERO SHOULD BE WRITTEN HERE	ADDRESS	SR6	SR5	SR4	SR3	SR2	SR1	SR0	
	00h	0	0	0	0	0	0	0	MODE REGISTER 0
	01h	0	0	0	0	0	0	1	MODE REGISTER 1
	02h	0	0	0	0	0	1	0	MODE REGISTER 2
	03h	0	0	0	0	0	1	1	MODE REGISTER 3
	04h	0	0	0	0	1	0	0	MODE REGISTER 4
	05h	0	0	0	0	1	0	1	MODE REGISTER 5
	06h	0	0	0	0	1	1	0	COLOR Y
	07h	0	0	0	0	1	1	1	COLOR CR
	08h	0	0	0	1	0	0	0	COLOR CB

Figure 15. Subaddress Registers in HDTV Mode

# ADV7195

## PROGRESSIVE SCAN MODE

### MODE REGISTER 0

#### MR0 (MR07–MR00)

(Address (SR4–SR0) = 00H)

Figure 16 shows the various operations under the control of Mode Register 0.

### MR0 BIT DESCRIPTION

#### Output Standard Selection (MR00–MR01)

These bits are used to select the output levels for the ADV7195.

If EIA-770.2 (MR01–00 = “00”) is selected, the output levels will be: 0 mV for blanking level, 700 mV for peak white for the Y channel,  $\pm 350$  mV for Pr, Pb outputs and  $-300$  mV for Sync. Sync insertion on the Pr, Pb channels is optional.

If EIA-770.1 (MR01–00 = “01”) is selected, the output levels will be: 0 mV for blanking level, 714 mV for peak white for the Y channel,  $\pm 350$  mV for Pr, Pb outputs and  $-286$  mV for Sync. Optional sync insertion on the Pr, Pb channels is not possible.

If Full I/P Range (MR01–00 = “10”) is selected, the output levels will be: 0 mV for blanking level, 700 mV for peak white for the Y channel,  $\pm 350$  mV for Pr, Pb outputs and  $-300$  mV for Sync. Sync insertion on the Pr, Pb channels is optional. This mode is used for RS-170, RS-343A standard output compatibility. Refer to Figures 61 to 64 for output level plots.

#### Input Control Signals (MR02–MR03)

These control bits are used to select whether data is input with external horizontal, vertical and blanking sync signals or if the data is input with embedded EAV/SAV codes.

An Asynchronous timing mode is also available using TSYNC, SYNC and DV as input control signals. These control signals have to be programmed by the user.

Figure 17 shows an example of how to program the ADV7195 to accept a different high definition standard but SMPTE293M, SMPTE274M, SMPTE296M or ITU-R.BT1358 standard.

#### Input Standard (MR04)

Select between 525p progressive scan input or 625p progressive scan input.

#### Reserved (MR05)

A “0” must be written to this bit.

#### DV Polarity (MR06)

This control bit allows the user to select the polarity of the DV input control signal to be either active high or active low. This is in order to facilitate interfacing from I to P Converters which use an active low blanking signal output.

#### Reserved (MR07)

A “0” must be written to this bit.

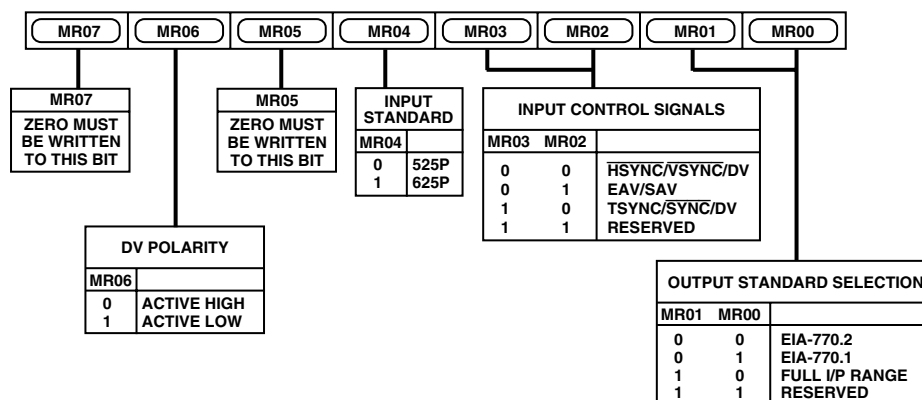


Figure 16. Mode Register 0

Table II must be followed when programming the control signals in Async Timing Mode.

**Table II. Truth Table**

$\overline{\text{SYNC}}$	TSYNC	DV	
1 $\rightarrow$ 0	0	0 or 1	50% Point of Falling Edge of Tri-Level Horizontal Sync Signal, A
0	0 $\rightarrow$ 1	0 or 1	25% Point of Rising Edge of Tri-Level Horizontal Sync Signal, B
0 $\rightarrow$ 1	0 or 1	0	50% Point of Falling Edge of Tri-Level Horizontal Sync Signal, C
1	0 or 1	0 $\rightarrow$ 1	50% Start of Active Video, D
1	0 or 1	1 $\rightarrow$ 0	50% End of Active Video, E

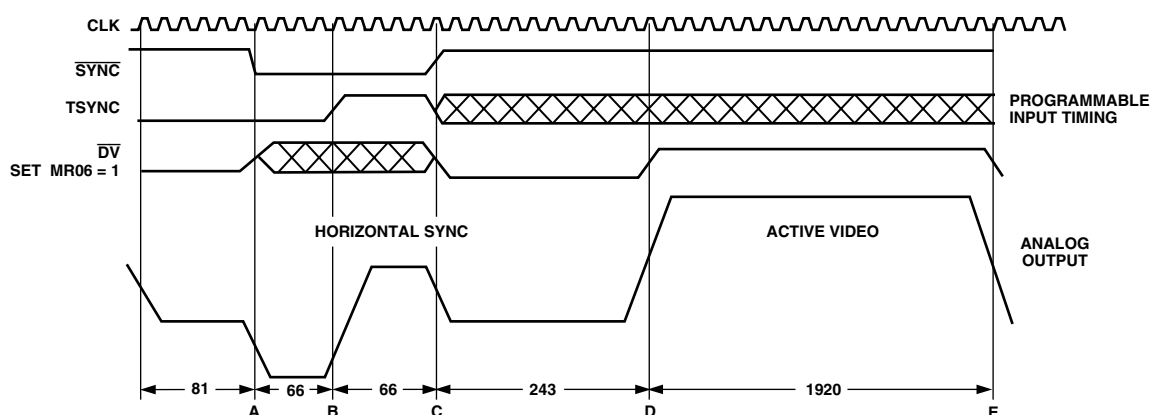


Figure 17. Async Timing Mode—Programming Input Control Signals for SMPTE295M Compatibility

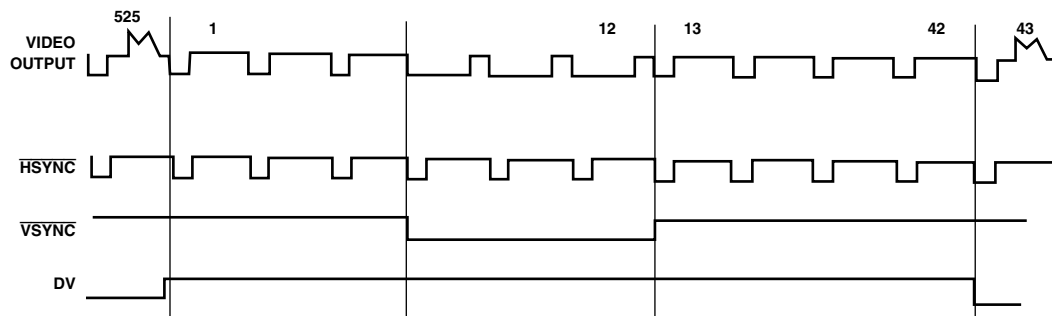


Figure 18. DV Input Control Signal in Relation to Video Output Signal



# ADV7195

## MODE REGISTER 1

### MR1 (MR17–MR10)

(Address (SR4–SR0) = 01H)

Figure 20 shows the various operations under the control of Mode Register 1.

### MR1 BIT DESCRIPTION

#### Pixel Data Enable (MR10)

When this bit is set to “0,” the pixel data input to the ADV7195 is blanked such that a black screen is output from the DACs. When this bit is set to “1,” pixel data is accepted at the input pins and the ADV7195 outputs the standard set in “Output Standard Selection” (MR01–00). This bit also must be set to “1” to enable output of the test pattern signals.

#### Input Format (MR11)

It is possible to input data in 4:2:2 format or at 4:4:4 format at 27 MHz.

#### Test Pattern Enable (MR12)

Enables or disables the internal test pattern generator.

#### Test Pattern Hatch/Frame (MR13)

If this bit is set to “0,” a crosshatch test pattern is output from the ADV7195 (for example, in SMPTE293M, 11 horizontal and 11 vertical white lines, four pixels wide are displayed against a black background). The crosshatch test pattern can be used to test monitor convergence. If this bit is set to “1,” a uniform colored frame/field test pattern is output from the ADV7195.

The color of the lines or the frame/field is by default white but can be programmed to be any color using the Color Y, Color Cr, Color Cb registers.

### VBI Open (MR14)

This bit enables or disables the facility of VBI data insertion during the Vertical Blanking Interval.

For this purpose Lines 13 to 42 of each frame can be used for VBI when SMPTE293M standard is used, or Lines 6 to 43 when ITU-R.BT1358 standard is used.

### Undershoot Limiter (MR15–MR16)

This control limits the Y signal to a programmable level in the active video region.

Available limit levels are –1.5 IRE, –6 IRE, –11 IRE.

Note that this facility is only available when Interpolation is enabled (MR36 = “1”).

### Sharpness Filter (MR17)

This control bit enables or disables the Sharpness Filter Mode. This bit must be set to “1” for any values programmed into the Filter Gain Register to take effect. It must also be set to “1” when Adaptive Filter mode is used.

Refer to Sharpness Filter Control and Adaptive Filter Control section.

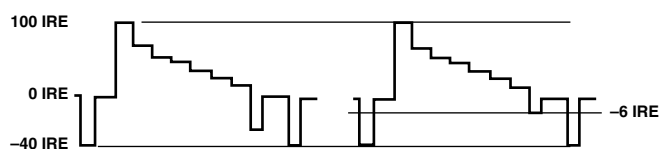


Figure 19. Undershoot Limiter, Programmed to –6 IRE

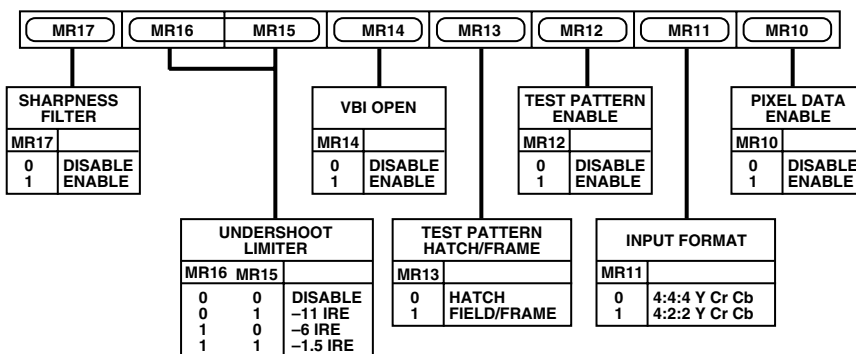


Figure 20. Mode Register 1



## MODE REGISTER 2

### MR1 (MR27–MR20)

(Address (SR4–SR0) = 02H)

Figure 22 shows the various operations under the control of Mode Register 2.

## MR2 BIT DESCRIPTION

### Y Delay (MR20–MR22)

This control bit delays the Y signal with respect to the falling edge of the horizontal sync signal by up to four pixel clock cycles. Figure 21 demonstrates this facility.

### Color Delay (MR23–MR25)

This control allows delay of the color signals with respect to the falling edge of the horizontal sync signal by up to four pixel clock cycles. Figure 21 demonstrates this facility.

### CGMS Enable (MR26)

When this bit is set to “1,” CGMS data is inserted on Line 41 in 525p mode. The CGMS conforms to CGMS-A EIA-J CPR1204-1, Transfer Method of Video ID information using vertical blanking interval (525p System), March 1998 and IEC61880, 1998, video systems (525/60)—video and accompanied data using the vertical blanking interval—analogue interface.

The CGMS data bits are programmed into the CGMS Data Registers 0–2. For more information refer to CGMS Data Registers section.

### CGMS CRC (MR27)

This bit enables the automatic Cyclic Redundancy Check when CGMS is enabled.

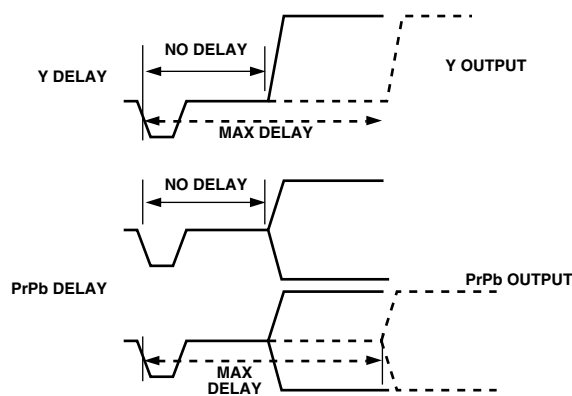


Figure 21. Y and Color Delay

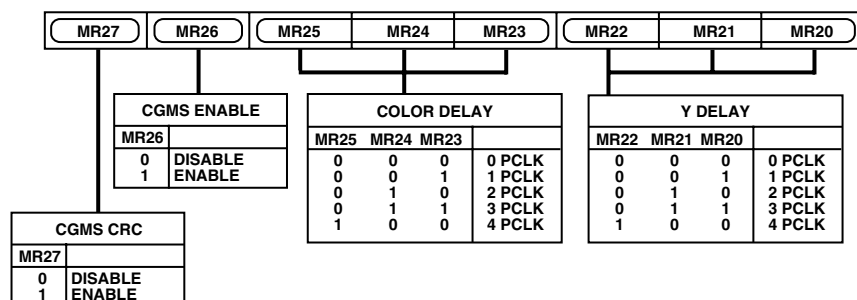


Figure 22. Mode Register 2

# ADV7195

## MODE REGISTER 3

### MR3 (MR37–MR30)

(Address (SR4–SR0) = 03H)

Figure 23 shows the various operations under the control of Mode Register 3.

### MR3 BIT DESCRIPTION

#### HDTV Enable (MR30)

When this bit is set to “1,” the ADV7195 reverts to HDTV mode (refer to HDTV mode section). When set to “0” the ADV7195 is set up in Progressive Scan Mode (PS Mode).

#### Reserved (MR31–MR32)

A “0” must be written to these bits.

#### DAC A Control (MR33)

Setting this bit to “1” enables DAC A, otherwise this DAC is powered down.

#### DAC B Control (MR34)

Setting this bit to “1” enables DAC B, otherwise this DAC is powered down.

#### DAC C Control (MR35)

Setting this bit to “1” enables DAC C, otherwise this DAC is powered down.

#### Interpolation (MR36)

This bit enables the second stage interpolation filters. When this bit is enabled (MR36 = “1”), data is sent at 54 MHz to the DAC output stage. After Reset it is recommended to toggle this bit.

Before toggling this bit, 3Ehex must be written to address 09hex to guarantee correct operation.

#### Reserved (MR37)

A “0” must be written to this bit.

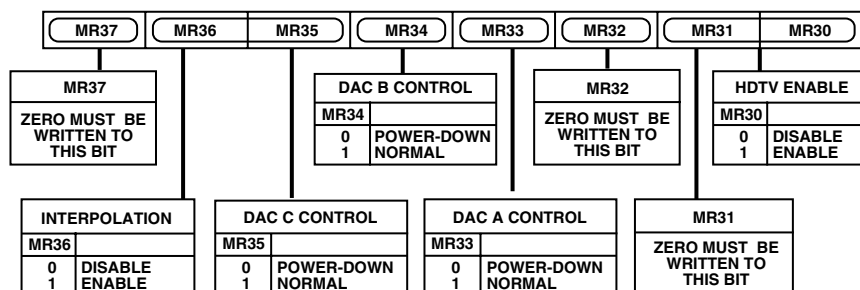


Figure 23. Mode Register 3

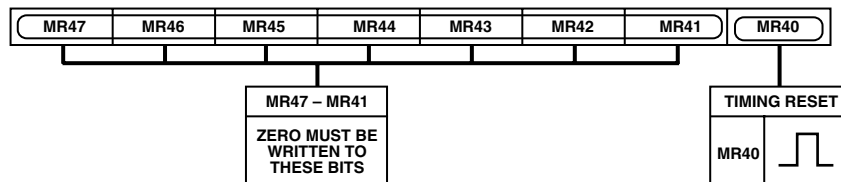


Figure 24. Mode Register 4

## MODE REGISTER 4

### MR4 (MR47–MR40)

(Address (SR4–SR0) = 04H)

Figure 24 shows the various operations under the control of Mode Register 4.

### MR4 BIT DESCRIPTION

#### Timing Reset (MR40)

Toggling MR40 from low to high and low again resets the internal horizontal and vertical timing counters.

## MODE REGISTER 5

### MR5 (MR57–MR50)

(Address (SR4–SR0) = 05H)

Figure 25 shows the various operations under the control of Mode Register 5.

### MR5 BIT DESCRIPTION

#### Reserved (MR50)

This bit is reserved for the revision code.

#### RGB Mode (MR51)

When RGB mode is enabled (MR51 = “1”) the ADV7195 accepts unsigned binary RGB data at its input port. This control is also available in Async Timing Mode.

#### Sync on PrPb (MR52)

By default, the color component output signals Pr, Pb do not contain any horizontal sync pulses. They can be inserted when MR52 = “1.” This facility is only available when Output Standard Selection has been set to EIA-770.2 (MR01–00 = “00”) or Full Input Range (MR01–00 = “10”).

This control is not available in RGB mode.

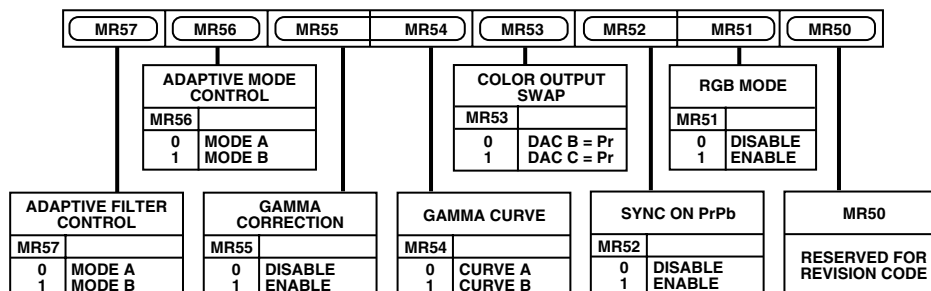


Figure 25. Mode Register 5

### Color Output Swap (MR53)

By default, DAC B is configured as the Pr output and DAC C as the Pb output. In setting this bit to “1” the DAC outputs can be swapped around so that DAC B outputs Pb and DAC C outputs Pr. Table III demonstrates this in more detail. This control is also available in RGB mode.

**Table III. Relationship Between Color Input Pixel Port, MR53 and DAC B, DAC C Outputs**

### In 4:4:4 Input Mode

Color Data Input on Pins	MR53	Analog Output Signal
Cr9-0	0	DAC B
Cb/Cr9-0	0	DAC C
Cr9-0	1	DAC C
Cb/Cr9-0	1	DAC B

### In 4:2:2 Input Mode

Color Data Input on Pins	MR53	Analog Output Signal
Cr9-0	0 or 1	Not Operational
Cb/Cr9-0	0	DAC C (Pb)
Cb/Cr9-0	1	DAC C (Pr)

### Gamma Curve (MR54)

This bit selects which of the two programmable gamma curves is to be used. When setting MR54 to “0,” the gamma correction curve selected is Curve A. Otherwise Curve B is selected. Each curve will have to be programmed by the user as explained in the Gamma Correction Registers section.

### Gamma Correction (MR55)

To enable Gamma Correction, and therefore activate the gamma curve programmed by the user, this bit must be set to “1.” Otherwise the programmable Gamma Correction facility is bypassed. Programming of the gamma correction curves is explained in the Gamma Correction Registers section.

## Adaptive Mode Control (MR56)

For this control to be effective, Adaptive Filter Control must be enabled (MR57 = "1") as well as the Sharpness Filter (MR17 = "1"). For filter plots, refer to Sharpness Filter Control and Adaptive Filter Control section.

### Adaptive Filter Control (MR57)

This bit enables the Adaptive Filter Control when set to “1.” Sharpness Filter must be enabled as well (MR17 = “1”). The Adaptive Filter Controls is explained in more detail under Sharpness Filter Control and Adaptive Filter Control section.

**COLOR Y**

**CY (CY7-CY0)**

(Address (SR4-SR0) = 06H)

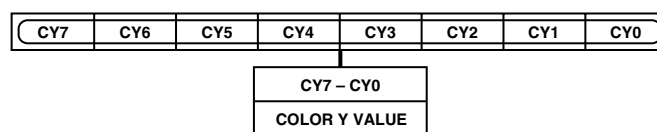


Figure 26. Color Y Register

**COLOR CR**

### CCR (CCR7-CCR0)

(Address (SR4-SR0) = 07H)

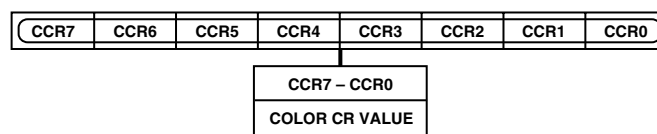


Figure 27. Color Cr Register

**COLOR CB**

**CCB (CCB7-CCB0)**

(Address (SR4-SR0) = 08H)

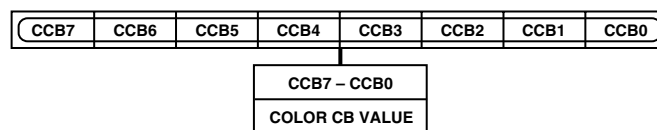


Figure 28. Color Cb Register

These three 8-bit-wide registers are used to program the output color of the internal test pattern generator, be it the lines of the crosshatch pattern or the uniform field test pattern and are available in PS mode and HDTV mode.

The standard used for the values for Y and the color difference signals to obtain white, black and the saturated primary and complementary colors conforms to the ITU-R BT 601-4 standard.

# ADV7195

Table IV shows sample color values to be programmed into the color registers when Output Standard Selection is set to EIA-770.2 (MR01=00 = "00").

**Table IV. Sample Color Values for EIA-770.2 Output Standard Selection**

Sample Color	Color Y Value	Color Cr Value	Color Cb Value
White	235 (EB)	128 (80)	128 (80)
Black	16 (10)	128 (80)	128 (80)
Red	81 (51)	240 (F0)	90 (5A)
Green	145 (91)	34 (22)	54 (36)
Blue	41 (29)	110 (6E)	240 (F0)
Yellow	210 (D2)	146 (92)	16 (10)
Cyan	170 (AA)	16 (10)	166 (A6)
Magenta	106 (6A)	222 (DE)	202 (CA)

## MODE REGISTER 6

### MR6 (MR67–MR60)

(ADDRESS (SR4–SR0) = 09H)

Figure 29 shows the various operations under the control of Mode Register 6.

## MR6 BIT DESCRIPTION

### MR67–MR60

The value 3EHex must be written to this register before the PLL is reset (reset MR36) to guarantee correct operation of the ADV7195.

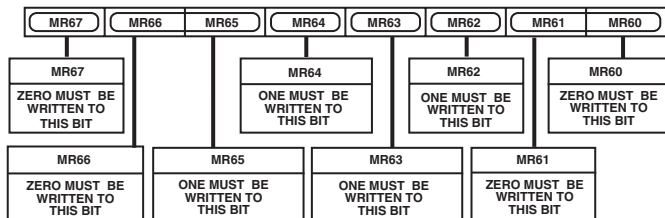


Figure 29. Mode Register 6

## CGMS DATA REGISTERS 2–0

### CGMS2 (CGMS27–CGMS20)

(Address (SR4–SR0) = 13H)

This 8-bit-wide register contains the last four CGMS data bits, (C16–C19) of the CGMS data stream.

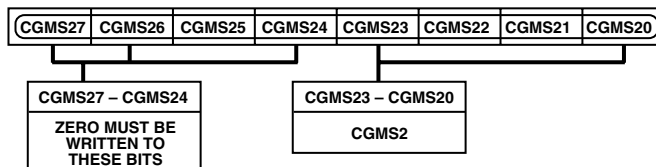


Figure 30. CGMS2 Data Register

### CGMS1 (CGMS17–CGMS10)

(Address (SR4–SR0) = 12H)

This 8-bit-wide register contains C8–C15 of the CGMS data stream.

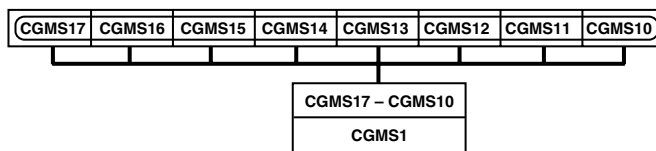


Figure 31. CGMS1 Data Register

### CGMS0 (CGMS07–CGMS00)

(Address (SR4–SR0) = 11H)

This 8-bit-wide register contains the first eight CGMS data bits, (C0–C7) of the CGMS data stream.

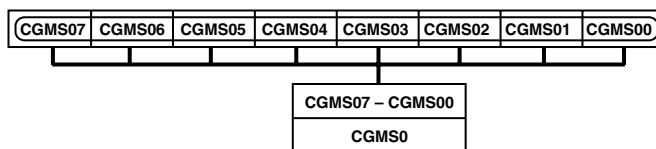


Figure 32. CGMS0 Data Register

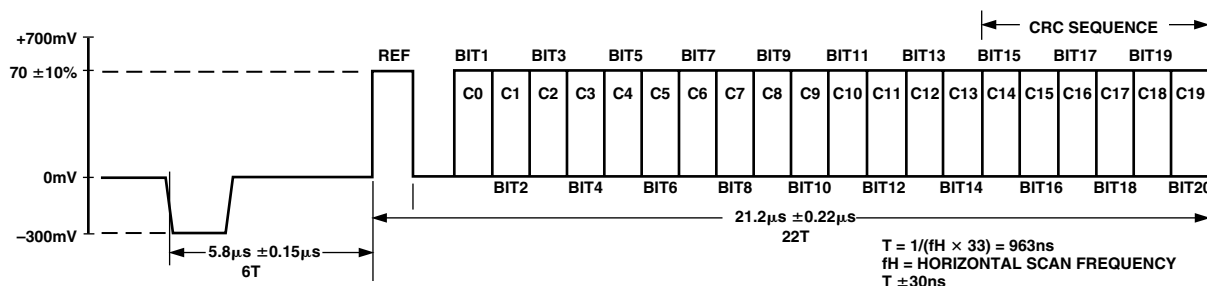


Figure 33. CGMS Waveform

**FILTER GAIN****FG (FG7–FG0)**

(Address (SR4–SR0) = 10H)

Figure 34 shows the various operations under the control of the Filter Gain register.

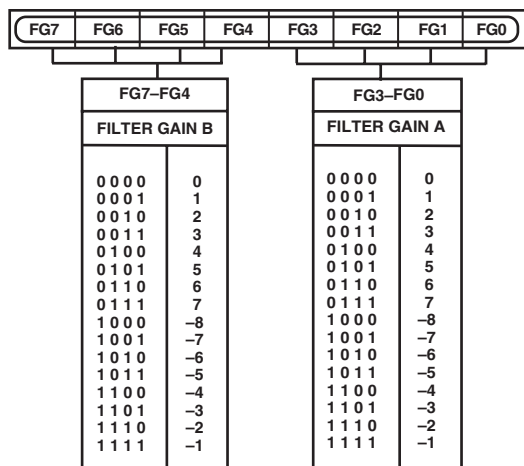


Figure 34. Filter Gain Register

**FG BIT DESCRIPTION****Filter Gain A (FG3–FG0)**

These bits are used to program the gain A value, which varies from response –8 to response +7 and are applied to Filter A.

**Filter Gain B (FG4–FG7)**

These bits are used to program the gain B value, which varies from response –8 to response +7, and are applied to Filter B.

Refer to Sharpness Filter Control and Adaptive Filter Control section for more detail.

**GAMMA CORRECTION REGISTERS 0–13****(GAMMA CORRECTION 0–13)**

(Address (SR5–SR0) = 14H–21H)

The Gamma Correction Registers are 14 8-bit-wide registers. They are used to program the gamma correction Curves A and B.

Generally, gamma correction is applied to compensate for the nonlinear relationship between signal input and brightness level output (as perceived on the CRT). It can also be applied wherever nonlinear processing is used.

Gamma correction uses the function:

$$\text{Signal}_{OUT} = (\text{Signal}_{IN})^{\gamma}$$

where  $\gamma$  = gamma power factor.

Gamma correction is performed on the luma data only.

The user has the choice of two different curves, Curve A or Curve B. At any one time only one of these curves can be used.

The response of the curve is programmed at seven predefined locations. In changing the values at these locations the gamma curve can be modified. Between these points linear interpolation is used to generate intermediate values. Considering the curve to have a total length of 256 points, the seven locations are at: 32, 64, 96, 128, 160, 192, 224.

Locations 0, 16, 240, and 255 are fixed and cannot be changed.

For the length of 16 to 240 the gamma correction curve has to be calculated as below:

$$y = x^{\gamma}$$

where

$y$  = gamma corrected output.

$x$  = linear input signal.

$\gamma$  = gamma power factor.

To program the gamma correction registers, the seven values for  $y$  have to be calculated using the following formula:

$$y_n = [x_{(n-16)} / (240 - 16)]^{\gamma} \times (240 - 16) + 16$$

where

$x_{(n-16)}$  = Value for  $x$  along x-axis at points:

$n$  = 32, 64, 96, 128, 160, 192, or 224.

$y_n$  = Value for  $y$  along the y-axis, which has to be written into the gamma correction register.

Example:

$$y_{32} = [(16/224)^{0.5} \times 224] + 16 = 76^*$$

$$y_{64} = [(48/224)^{0.5} \times 224] + 16 = 120^*$$

$$y_{96} = [(80/224)^{0.5} \times 224] + 16 = 150^*$$

$$y_{128} = [(112/224)^{0.5} \times 224] + 16 = 174^*$$

\*Rounded to the nearest integer.

The above will result in a gamma curve shown on the next page, assuming a ramp signal as an input.

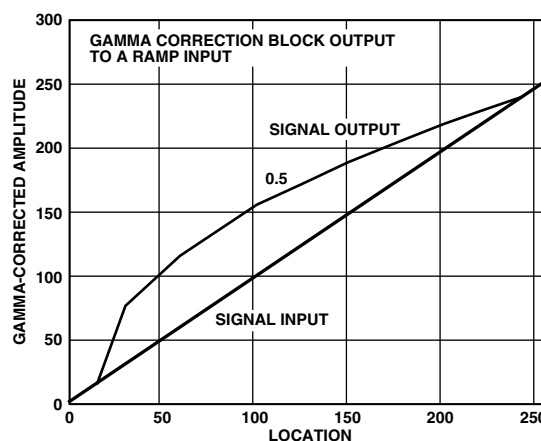


Figure 35. Signal Input (Ramp) and Signal Output for Gamma 0.5

# ADV7195

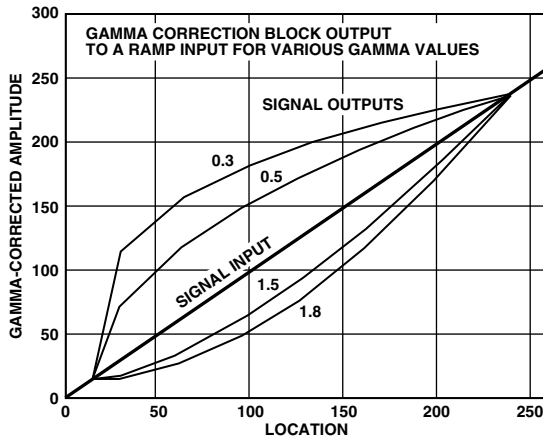


Figure 36. Signal Input (Ramp) and Selectable Gamma Output Curves

The gamma curves shown in Figure 36 are examples only, any user-defined curve is acceptable in the range of 16–240.

## SHARPNESS FILTER CONTROL AND ADAPTIVE FILTER CONTROL

Three Filter modes are available on the ADV7195: one Sharpness Filter mode and two Adaptive Filter modes.

### SHARPNESS FILTER MODE

To enhance or attenuate the Y signal in the frequency ranges shown in Figure 37, the following register settings must be used:

Sharpness Filter must be enabled (MR17 = “1”) and Adaptive Filter Control must be disabled (MR57 = “0”).

To select one of the 256 individual responses, the according gain values for each filter, which range from –8 to +7, must be programmed into the Filter Gain register.

### ADAPTIVE FILTER MODE

The Adaptive Filter Threshold A, B, C registers, the Adaptive Filter Gain 1, 2, 3 registers, and the Filter Gain register are used in Adaptive Filter mode. To activate the Adaptive Filter control, Sharpness Filter must be enabled (MR17 = “1”) and Adaptive Filter Control must be enabled (MR57 = “1”).

The derivative of the incoming signal is compared to the three programmable threshold values: Adaptive Filter Threshold A, B, C.

The edges can then be attenuated with the settings in Adaptive Filter Gain 1, 2, 3 registers and Filter Gain register.

According to the settings of the Adaptive Mode control (MR56), two Adaptive Filter Modes are available:

1. Mode A: is used when Adaptive Filter Mode (MR56) is set to “0.” In this case, Filter B (LPF) will be used in the adaptive filter block. Also, only the programmed values for Gain B in the Filter Gain, Adaptive Filter Gain 1, 2, 3 are applied when needed. The Gain A values are fixed and cannot be changed.
2. Mode B: is used when Adaptive Filter Mode (MR56) is set to “1.” In this mode a cascade of Filter A and Filter B is used. Both settings for Gain A and Gain B in the Filter Gain, Adaptive Filter Gain 1, 2, 3 become active when needed.

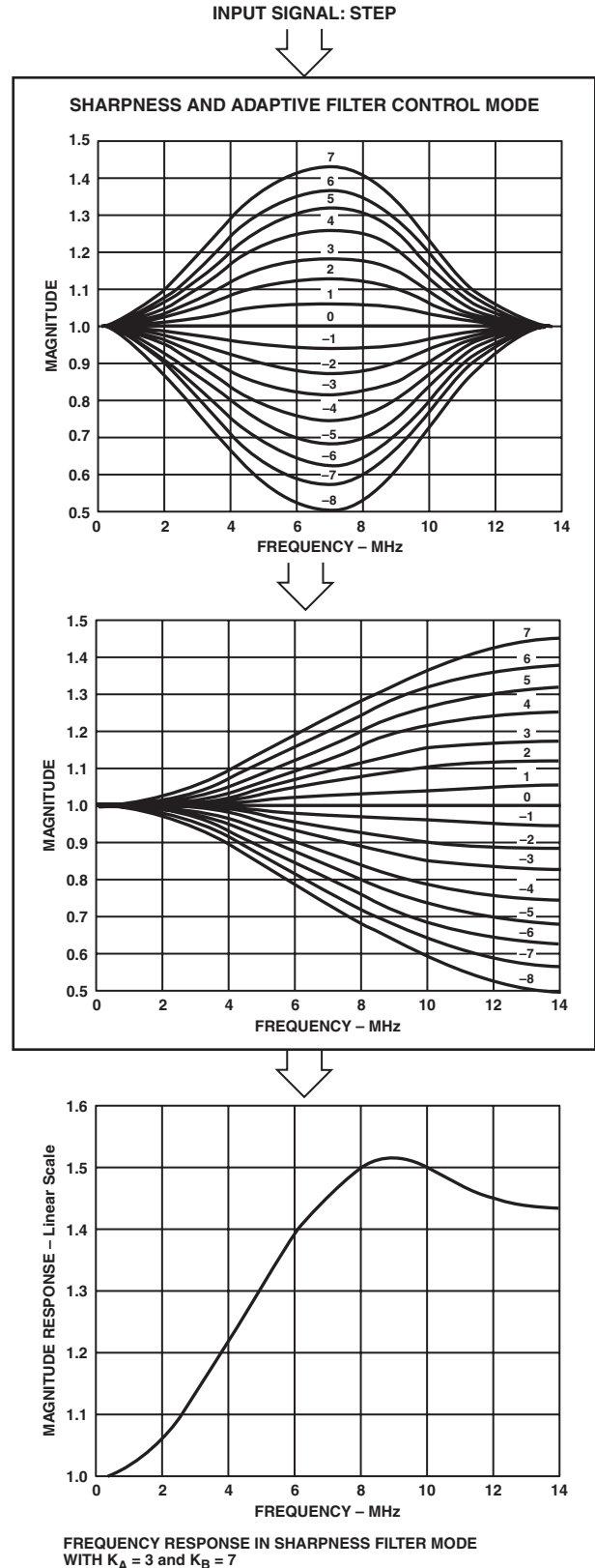


Figure 37. Frequency Response in Sharpness Filter Mode



**ADAPTIVE FILTER GAIN 1****AFG1 (AFG1)7–0**

(Address (SR5–SR0) = 22H)

This 8-bit-wide register is used to program the gain applied to signals that lie above Adaptive Filter Threshold A but are smaller than Adaptive Filter Threshold B.

Gain A and Gain B values vary from –8 to +7.

Settings for (AFG1)3–0 have no effect unless Adaptive Mode Control is set to Mode B (MR56 = “1”).

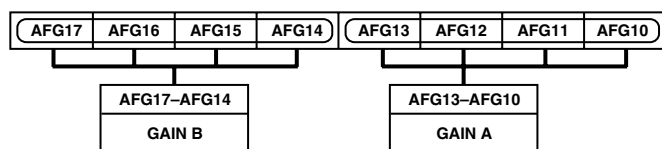


Figure 38. Adaptive Filter Gain 1 Register

**ADAPTIVE FILTER GAIN 2****AFG2 (AFG2)7–0**

(Address (SR5–SR0) = 23H)

This 8-bit-wide register is used to program the gain applied to signals that lie above Adaptive Filter Threshold B but are smaller than Adaptive Filter Threshold C.

Gain A and Gain B values vary from –8 to +7.

Settings for (AFG2)3–0 have no effect unless Adaptive Mode Control is set to Mode B (MR56 = “1”).

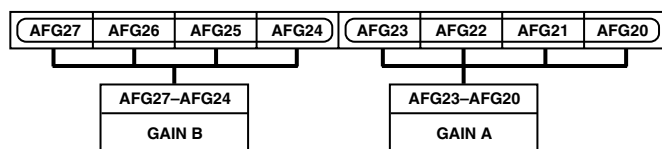


Figure 39. Adaptive Filter Gain 2 Register

**ADAPTIVE FILTER GAIN 3****AFG3 (AFG3)7–0**

(Address (SR5–SR0) = 24H)

This 8-bit-wide register is used to program the gain applied to signals that lie above Adaptive Filter Threshold C.

Gain A and Gain B values vary from –8 to +7.

Settings for (AFG3)3–0 have no effect unless Adaptive Mode Control is set to Mode B (MR56 = “1”).

The gain applied to signals that lie below Adaptive Threshold A is programmed in the Filter Gain register.

At any one time only one of the following registers is active: AFG1, AFG2, AFG3, FG. The gain values can be preprogrammed and become active whenever the threshold conditions for the according register are met. To program the Adaptive Filter Gain registers the same register settings are used as for the Filter Gain register.

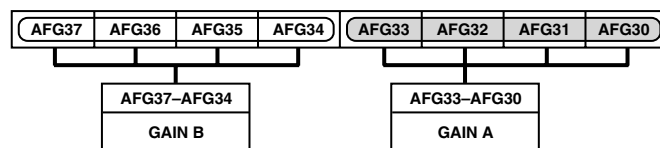


Figure 40. Adaptive Filter Gain 3 Register

**ADAPTIVE FILTER THRESHOLD A****AFTA AFTA7–0**

(Address (SR5–SR0) = 25H)

This 8-bit-wide register is used to program the threshold value for small edges. The recommended programmable threshold range is from 16–235, although any value in the range of 0–255 can be used.

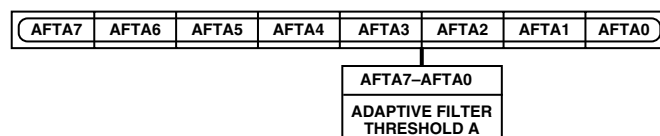


Figure 41. Adaptive Filter Threshold A Register

**ADAPTIVE FILTER THRESHOLD B****AFTB AFTB7–0**

(Address (SR5–SR0) = 26H)

This 8-bit-wide register is used to program the threshold value for medium edges and has priority over Adaptive Threshold A. The recommended programmable threshold range is from 16–235, although any value in the range of 0–255 can be used.

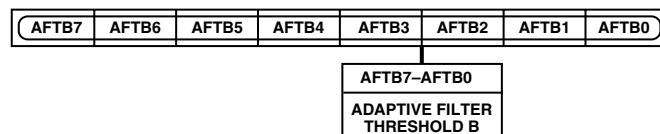


Figure 42. Adaptive Filter Threshold B Register

**ADAPTIVE FILTER THRESHOLD C****AFTC AFTC7–0**

(Address (SR5–SR0) = 27H)

This 8-bit-wide register is used to program the threshold value for large edges and has priority over Adaptive Threshold A and B. The recommended programmable threshold range is from 16–235, although any value in the range of 0–255 can be used.

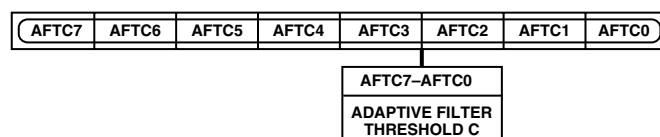


Figure 43. Adaptive Filter Threshold C

# ADV7195

## SHARPNESS FILTER AND ADAPTIVE FILTER APPLICATION EXAMPLES

### Sharpness Filter Application

The sharpness filter can be used to enhance or attenuate the Y video output signal.

The following register settings were used to achieve the results shown in Figure 44a and Figure 44b.

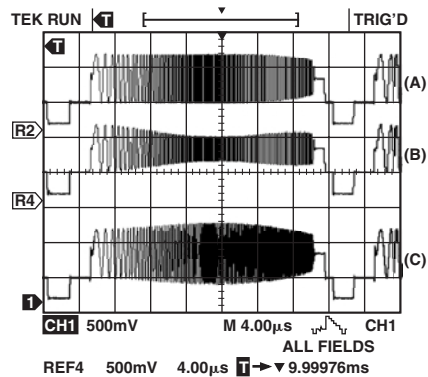
Input data was generated by an external signal source.

Table V.

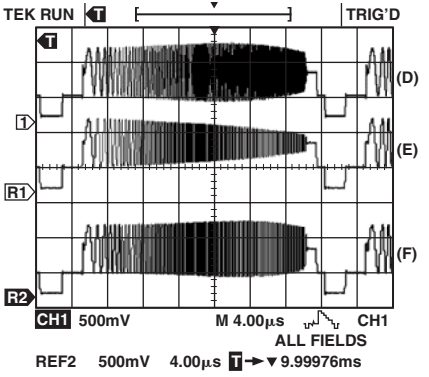
Address		Register Setting
00hex	Mode Register 0	40hex
01hex	Mode Register 1	81hex
02hex	Mode Register 2	00hex
03hex	Mode Register 3	78hex
04hex	Mode Register 4	00hex
05hex	Mode Register 5	00hex
09hex	Mode Register 6	3Ehex
10hex	Filter Gain	00hex (a)
10hex	Filter Gain	08hex (b)
10hex	Filter Gain	04hex (c)
10hex	Filter Gain	40hex (d)
10hex	Filter Gain	80hex (e)
10hex	Filter Gain	22hex (f)

Table VI.

Address		Register Setting
00hex	Mode Register 0	00hex
01hex	Mode Register 1	85hex
02hex	Mode Register 2	00hex
03hex	Mode Register 3	38hex
04hex	Mode Register 4	00hex
05hex	Mode Register 5	00hex
09hex	Mode Register 6	3Ehex



(a)



(b)

Figure 44. Sharpness Filter Control with Different Gain Settings for Filter Gain



In toggling MR17 (Sharpness Filter Enable/Disable) and setting the Filter Gain register value to 99hex it can be seen that the line contours of the crosshatch pattern change their sharpness.

## Adaptive Filter Control Application

Figure 45 shows a typical signal to be processed by the Adaptive Filter Control block.

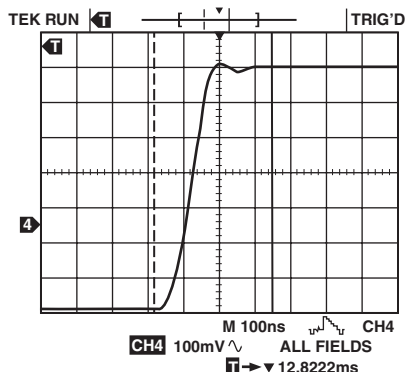


Figure 45. Input Signal to Adaptive Filter Control

The following register settings were used to obtain the results shown in Figure 47, i.e., to remove the ringing on the Y signal.

Input data was generated by an external signal source.

Table VII.

Address	Register Setting
00hex	Mode Register 0
01hex	Mode Register 1
02hex	Mode Register 2
03hex	Mode Register 3
04hex	Mode Register 4
05hex	Mode Register 5
09hex	Mode Register 6
10hex	Filter Gain
22hex	Adaptive Filter Gain 1
23hex	Adaptive Filter Gain 2
24hex	Adaptive Filter Gain 3
25hex	Adaptive Filter Threshold A
26hex	Adaptive Filter Threshold B
27hex	Adaptive Filter Threshold C

Figure 46 shows the output signal when changing the Adaptive Filter Mode to Mode B (MR56 = "1").

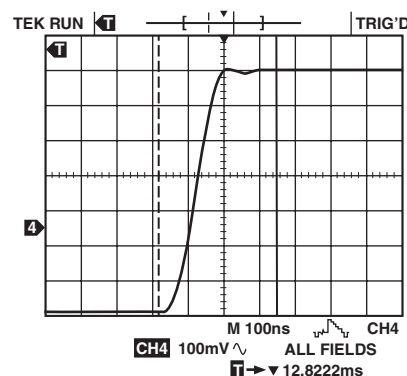


Figure 46. Output Signal from Adaptive Filter Control

The Adaptive Filter Control can also be demonstrated using the internally generated crosshatch test pattern and toggling the Adaptive Filter Control Bit (MR57) using the following register settings:

Table VIII.

Address	Register Setting
A00hex	Mode Register 0
01hex	Mode Register 1
02hex	Mode Register 2
03hex	Mode Register 3
04hex	Mode Register 4
05hex	Mode Register 5
06hex	Color Y
07hex	Color Cr
08hex	Color Cb
09hex	Mode Register 6
10hex	Filter Gain
22hex	Adaptive Filter Gain 1
23hex	Adaptive Filter Gain 2
24hex	Adaptive Filter Gain 3
25hex	Adaptive Filter Threshold A
26hex	Adaptive Filter Threshold B
27hex	Adaptive Filter Threshold C

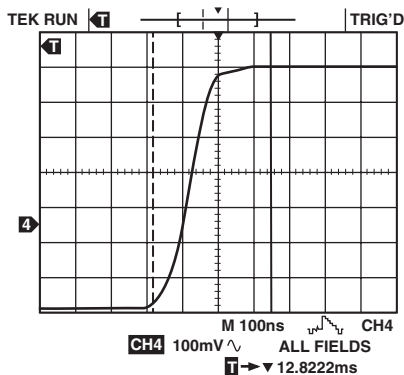


Figure 47. Output Signal from Adaptive Filter Control

# ADV7195

## HDTV MODE MODE REGISTER 0 MR0 (MR07–MR00)

(Address (SR4–SR0) = 00H)

Figure 50 shows the various operations under the control of Mode Register 0.

### MR0 BIT DESCRIPTION

#### Output Standard Selection (MR00–MR01)

These bits are used to select the output levels from the ADV7195.

If EIA-770.3 (MR01–00 = “00”) is selected, the output levels will be: 0 mV for blanking level, 700 mV for peak white (Y channel),  $\pm 350$  mV for Pr, Pb outputs and  $-300$  mV for tri-level sync.

If Full Input Range (MR01–00 = “10”) is selected, the output levels will be 700 mV for peak white for the Y channel,  $\pm 350$  mV for Pr, Pb outputs and  $-300$  mV for Sync. This mode is used for RS-170, RS-343A standard output compatibility.

Sync insertion on the Pr, Pb channels is optional. For output levels, refer to the Appendix.

#### Input Control Signals (MR02–MR03)

These control bits are used to select whether data is input with external horizontal, vertical and blanking sync signals or if the data is input with embedded EAV/SAV codes. An Asynchronous timing mode is also available using TSYNC, SYNC and DV as input control signals. These timing control signals have to be programmed by the user.

Figure 49 shows an example of how to program the ADV7195 to accept a different high definition standard but SMPTE293M, SMPTE274M, SMPTE296M or ITU-R.BT1358 standard.

#### Reserved (MR04)

A “0” must be written to this bit.

#### Input Standard (MR05)

Select between 1080i or 720p input.

#### DV Polarity (MR06)

This control bit allows to select the polarity of the DV input control signal to be either active high or active low.

#### Reserved (MR07)

A “0” must be written to this bit.

Table IX. Truth Table

SYNC	TSYNC	DV	
1 $\rightarrow$ 0	0	0 or 1	50% Point of Falling Edge of Tri-Level Horizontal Sync Signal, A
0	0 $\rightarrow$ 1	0 or 1	25% Point of Rising Edge of Tri-Level Horizontal Sync Signal, B
0 $\rightarrow$ 1	0 or 1	0	50% Point of Falling Edge of Tri-Level Horizontal Sync Signal, C
1	0 or 1	0 $\rightarrow$ 1	50% Start of Active Video, D
1	0 or 1	1 $\rightarrow$ 0	50% End of Active Video, E

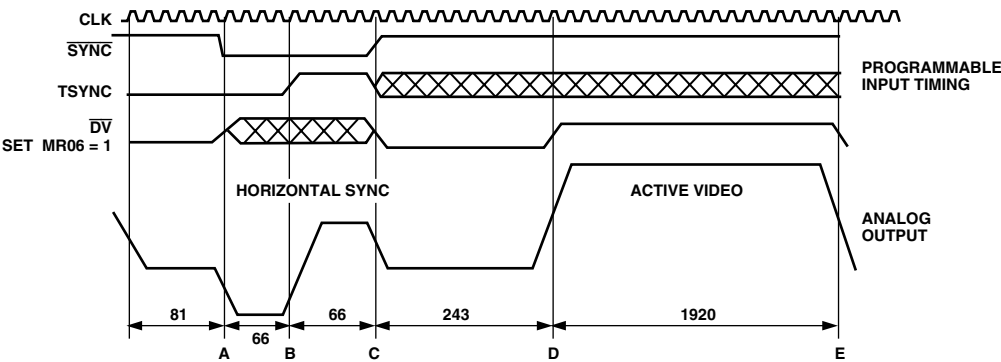


Figure 48. Async Timing Mode—Programming Input Control Signals for SMPTE295M Compatibility

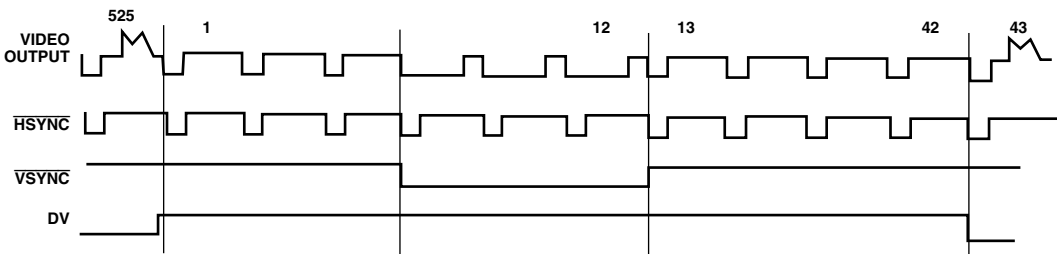


Figure 49. DV Input Control Signal in Relation to Video Output Signal

**MODE REGISTER 1****MR1 (MR17–MR10)**

(Address (SR4–SR0) = 01H)

Figure 51 shows the various operations under the control of Mode Register 1.

**MR1 BIT DESCRIPTION****Pixel Data Enable (MR10)**

When this bit is set to “0,” the pixel data input to the ADV7195 is blanked such that a black screen is output from the DACs. When this bit is set to “1,” pixel data is accepted at the input pins and the ADV7195 outputs to the standard set in “Output Standard Selection” (MR01–00). This bit also must be set to “1” to enable output of the test pattern signals.

**Input Format (MR11)**

It is possible to input data in 4:2:2 format or in 4:4:4 HDTV format.

**Test Pattern Enable (MR12)**

Enables or disables the internal test pattern generator.

**Test Pattern Hatch/Frame (MR13)**

If this bit is set to “0,” a crosshatch test pattern is output from the ADV7195. The crosshatch test pattern can be used to test monitor convergence.

If this bit is set to “1,” a uniform colored frame/field test pattern is output from the ADV7195.

The color of the lines or the frame/field is white by default but can be programmed to be any color using the Color Y, Color Cr, Color Cb registers.

**VBI Open (MR14)**

This bit enables or disables the facility of VBI data insertion during the Vertical Blanking Interval.

For this purpose Lines 7–20 in 1080i and Lines 6–25 in 720p can be used for VBI data insertion.

**Reserved (MR15–MR17)**

A “0” must be written to these bits.

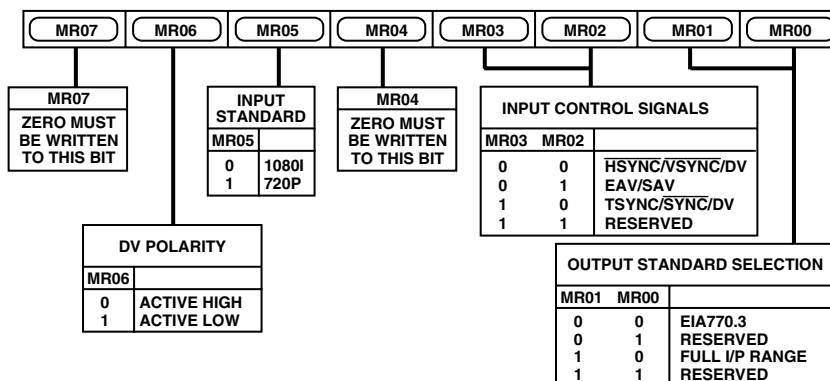


Figure 50. Mode Register 0

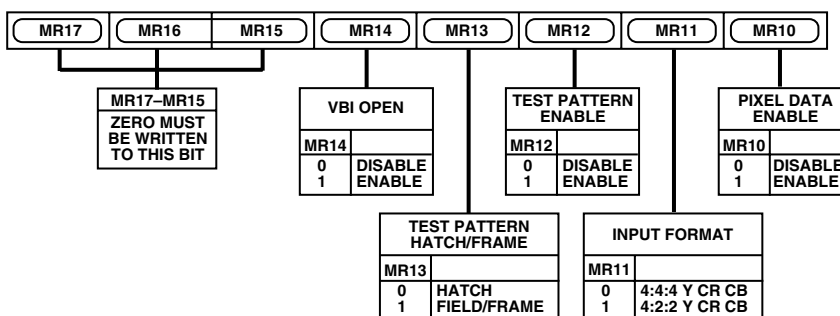


Figure 51. Mode Register 1



**MODE REGISTER 4****MR4 (MR47–MR40)**

(Address (SR4–SR0) = 04H)

Figure 55 shows the various operations under the control of Mode Register 4.

**MR4 BIT DESCRIPTION****Timing Reset (MR40)**

Toggling MR40 from low to high and low again resets the internal horizontal and vertical timing counters.

**Reserved (MR41–MR47)**

A “0” must be written to these bits.

**MODE REGISTER 5****MR5 (MR57–MR50)**

(Address (SR4–SR0) = 05H)

Figure 56 shows the various operations under the control of Mode Register 5.

**MR5 BIT DESCRIPTION****Reserved (MR50)**

This bit is reserved for the revision code.

**RGB Mode (MR51)**

When RGB mode is enabled (MR51 = “1”), the ADV7195 accepts unsigned binary RGB data at its input port. This control is also available in Async Timing Mode.

**Sync on PrPb (MR52)**

By default the color component output signals Pr, Pb do not contain any horizontal sync pulses. If required, they can be inserted when MR52 = “1.” This control is not available in RGB Mode.

**Color Output Swap (MR53)**

By default DAC B is configured as the Pr output and DAC C as the Pb output. In setting this bit to “1,” the DAC outputs can be swapped around so that DAC B outputs Pb and DAC C outputs Pr. Table X demonstrates this in more detail.

**Reserved (MR54–MR57)**

A “0” must be written to these bits.

**Table X. Relationship Between Input Pixel Port, MR53 and DAC B, DAC C Outputs**

**In 4:4:4 Input Mode**

Color Data Input on Pins	MR53	Analog Output Signal
Cr9–0	0	DAC B
Cb/Cr9–0	0	DAC C
Cr9–0	1	DAC C
Cb/Cr9–0	1	DAC B

**In 4:2:2 Input Mode**

Color Data Input on Pins	MR53	Analog Output Signal
Cr9–0	0 or 1	Not Operational
Cb/Cr9–0	0	DAC C (Pb)
Cb/Cr9–0	1	DAC C (Pr)

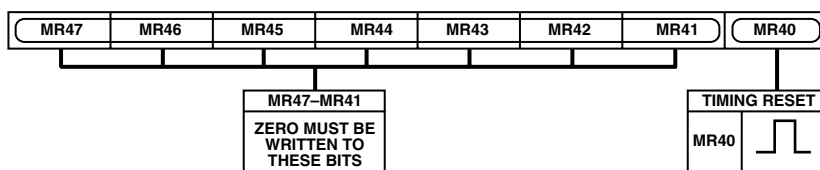


Figure 55. Mode Register 4

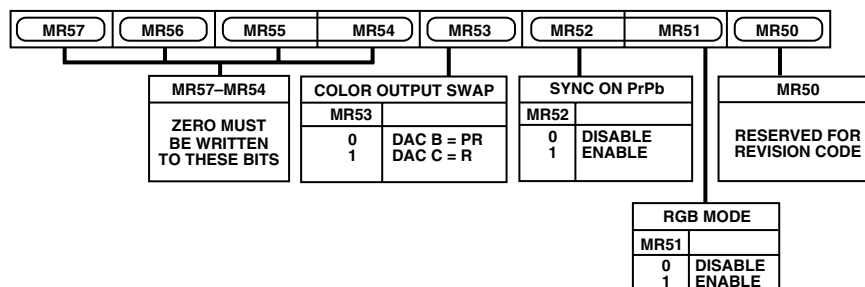


Figure 56. Mode Register 5



DAC output traces on a PCB should be treated as transmission lines. It is recommended that the DACs be placed as close as possible to the output connector, with the analog output traces being as short as possible (less than 3 inches). The DAC termination resistors should be placed as close as possible to the DAC outputs and should overlay the PCB's ground plane. As well as minimizing reflections, short analog output traces will reduce noise pickup due to neighboring digital circuitry.

## Supply Decoupling

Noise on the analog power plane can be further reduced by the use of decoupling capacitors.

Optimum performance is achieved by the use of 0.1  $\mu\text{F}$  ceramic capacitors. Each of group of  $V_{AA}$  or  $V_{DD}$  pins should be individually decoupled to ground. This should be done by placing the capacitors as close as possible to the device with the capacitor leads as short as possible, thus minimizing lead inductance.

## Digital Signal Interconnect

The digital signal lines should be isolated as much as possible from the analog outputs and other analog circuitry. Digital signal lines should not overlay the analog power plane.

Due to the high clock rates used, long clock lines to the ADV7195 should be avoided to minimize noise pickup. Any active pull-up termination resistors for the digital inputs should be connected to the digital power plane and not the analog power plane.

## Analog Signal Interconnect

The ADV7195 should be located as close as possible to the output connectors, thus minimizing noise pickup and reflections due to impedance mismatch.

For optimum performance, the analog outputs should be source and load terminated, as shown in Figure 58. The termination resistors should be as close as possible to the ADV7195 to minimize reflections.

Any unused inputs should be tied to ground.

## Video Output Buffer and Optional Output Filter

Output buffering is necessary in order to drive output devices, such as progressive scan or HDTV monitors.

Analog Devices produces a range of suitable op amps for this application. Suitable op amps would be the AD8009, AD8002, AD8001, or AD8057. More information on line driver buffering circuits is given in the relevant op amp data sheets.

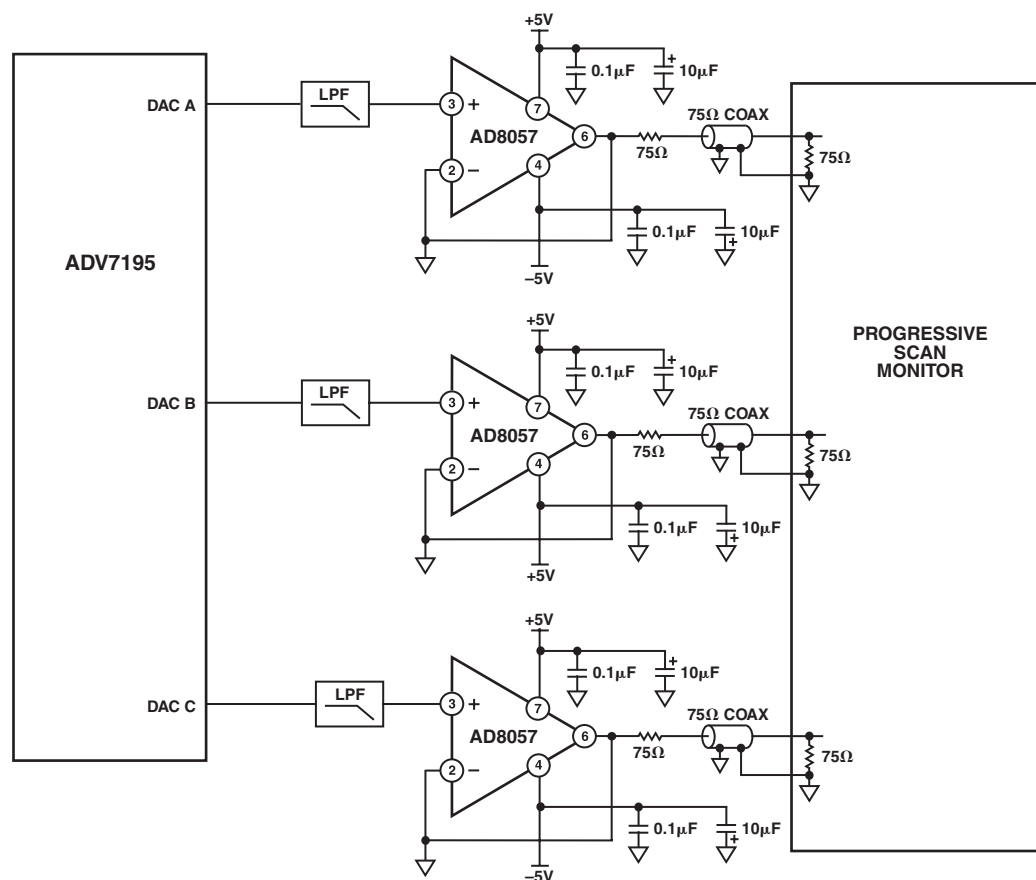


Figure 58. Output Buffer and Optional Filter



# ADV7195

An optional analog reconstruction LPF might be required as an antialias filter if the ADV7195 is connected to a device that requires this filtering.

The Eval ADV7195/ADV7196/ADV7197 EB evaluation board uses the ML6426 Microlinear IC, which provides buffering and low-pass filtering for HDTV applications.

The Eval ADV7195/ADV7196/ADV7197 EB Rev. B and Rev. C evaluation board uses the AD8057 as a buffer and a sixth order filter as a LPF.

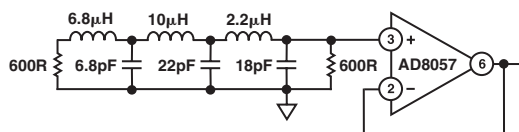


Figure 59. Example/Cr Output Filter:  
PS Mode/2× Oversampling

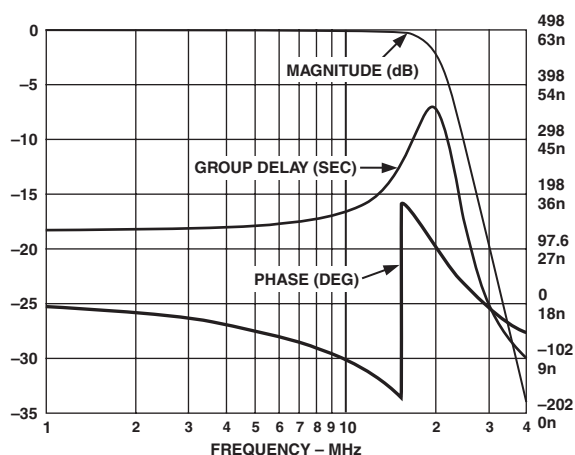


Figure 60. Frequency Response/C1 Filter  
Circuit in above Figure

## REGISTER SETTINGS

Table XI. Register Settings on Power-Up

Address		Register Setting
00hex	Mode Register 0	00hex
01hex	Mode Register 1	00hex
02hex	Mode Register 2	00hex
03hex	Mode Register 3	38hex
04hex	Mode Register 4	00hex
05hex	Mode Register 5	00hex
06hex	Color Y	A0hex
07hex	Color Cr	80hex
08hex	Color Cb	80hex
09hex	Mode Register 6	00hex
10hex	Filter Gain	00hex
22hex	Adaptive Filter Gain 1	ACHex
23hex	Adaptive Filter Gain 2	9Ahex
24hex	Adaptive Filter Gain 3	88hex
25hex	Adaptive Filter Threshold A	28 hex
26hex	Adaptive Filter Threshold B	3Fhex
27hex	Adaptive Filter Threshold C	64 hex

Table XII. Internal Colorbars (Hatch), Progressive Scan Mode

Address		Register Setting
00hex	Mode Register 0	00hex
01hex	Mode Register 1	05hex
02hex	Mode Register 2	00hex
03hex	Mode Register 3	38hex
04hex	Mode Register 4	00hex
05hex	Mode Register 5	00hex
06hex	Color Y	xxhex
07hex	Color Cr	xxhex
08hex	Color Cb	xxhex
09hex	Mode Register 6	3Ehex

Table XIII. Internal Colorbars (Field), HDTV Mode

Address		Register Setting
00hex	Mode Register 0	00hex
01hex	Mode Register 1	0Dhex
02hex	Mode Register 2	00hex
03hex	Mode Register 3	39hex
04hex	Mode Register 4	00hex
05hex	Mode Register 5	00hex
06hex	Color Y	xxhex
07hex	Color Cr	xxhex
08hex	Color Cb	xxhex



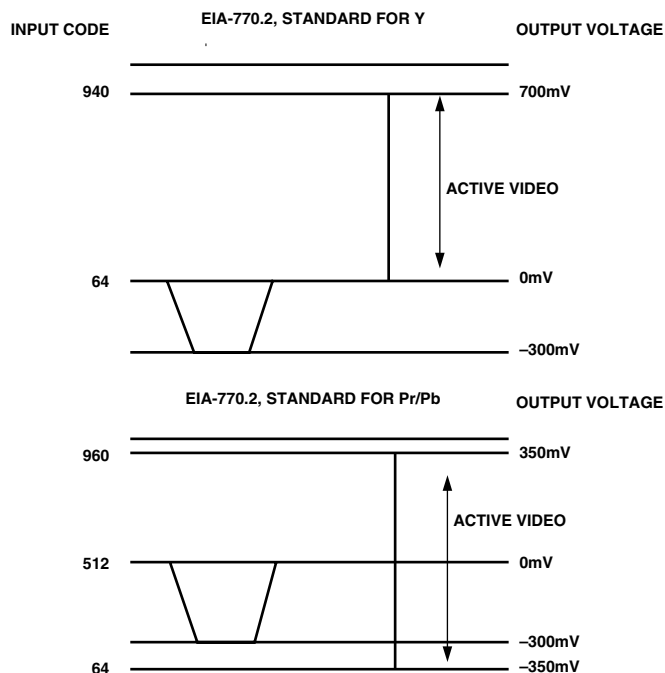


Figure 61. EIA-770.2 Standard Output Signals (525p)

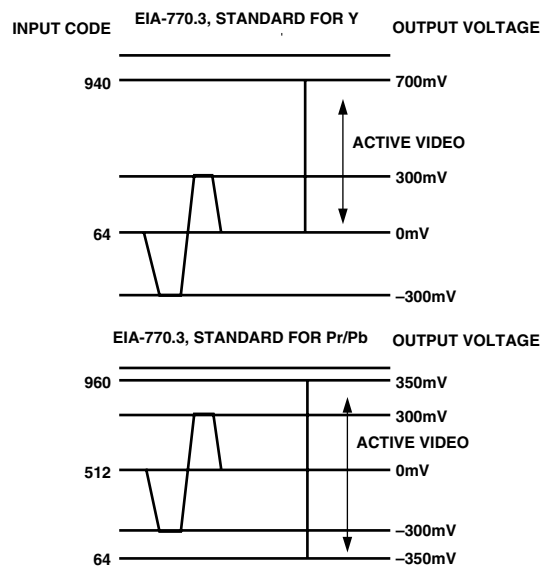


Figure 63. EIA-770.3 Standard Output Signals (1080i, 720p)

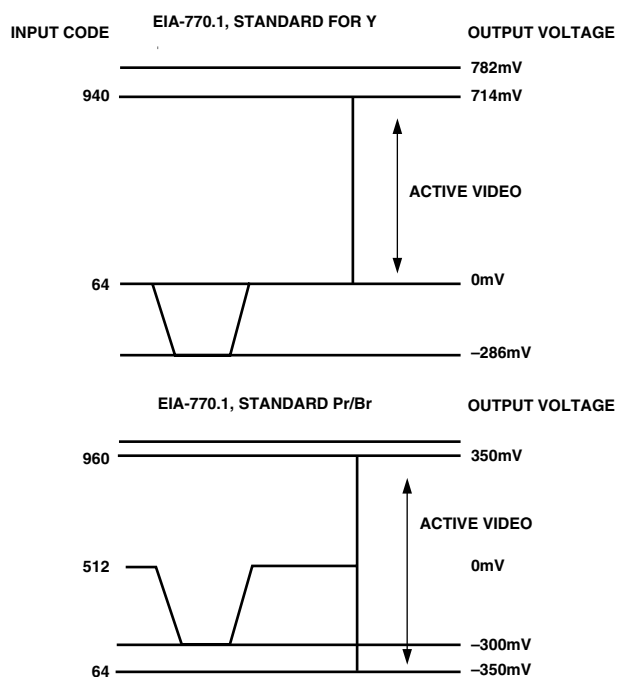


Figure 62. EIA-770.1 Standard Output Signals (525p)

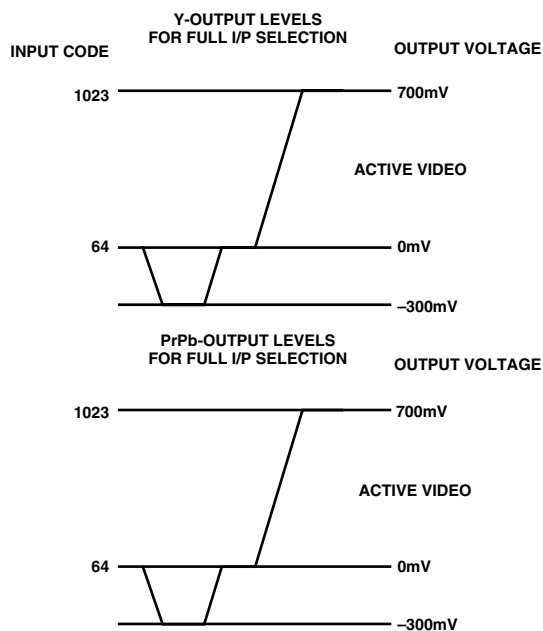


Figure 64. Output Levels for Full I/P Selection

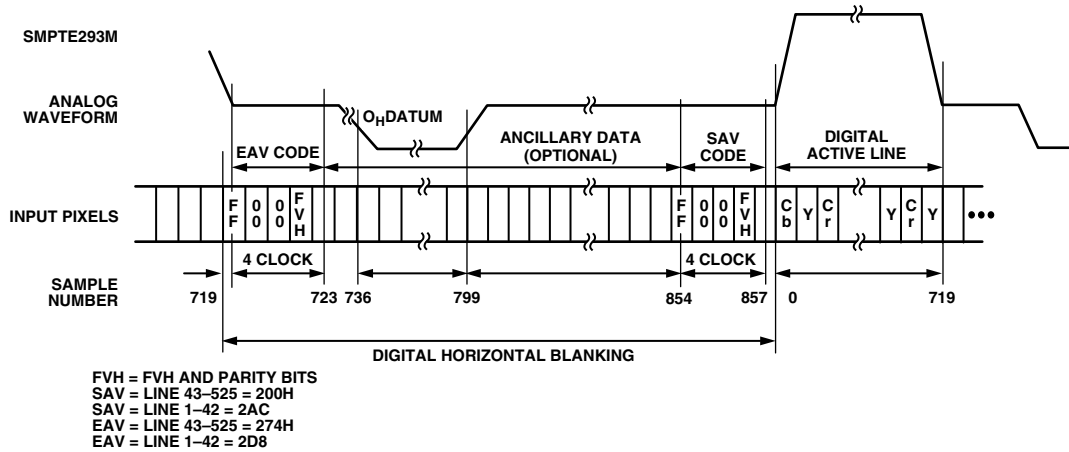


Figure 65. EAV/SAV Input Data Timing Diagram—SMPTE293M

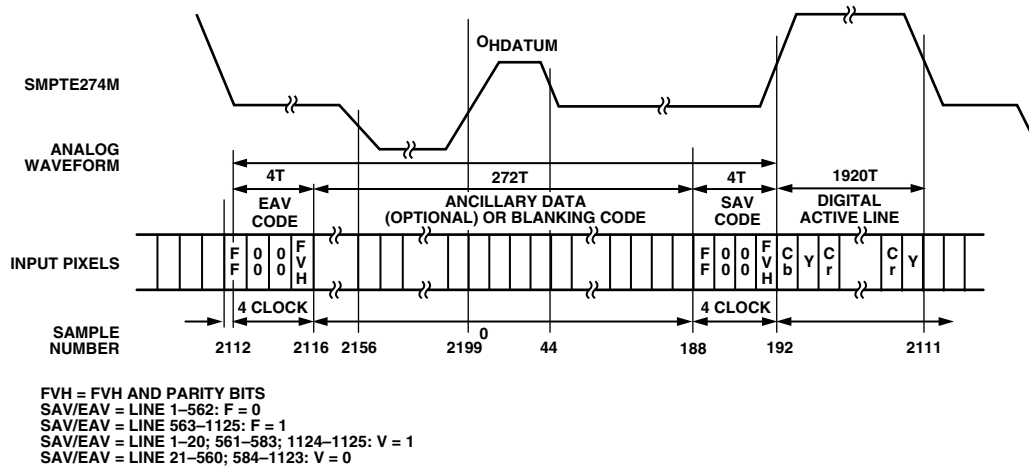


Figure 66. EAV/SAV Input Data Timing Diagram—SMPTE274M

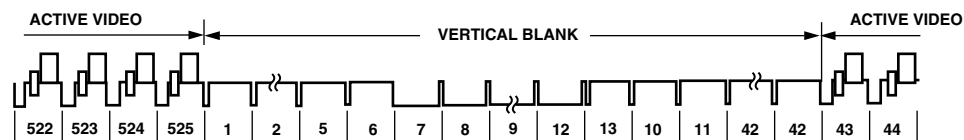


Figure 67. SMPTE293M (525p)

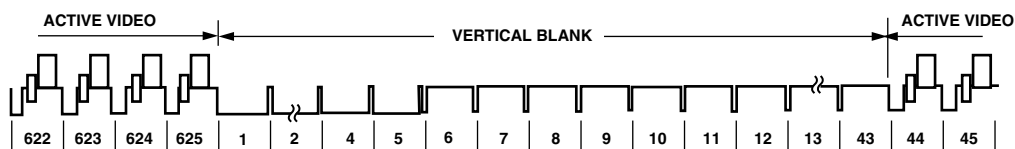


Figure 68. ITU-R.BT1358 (625p)

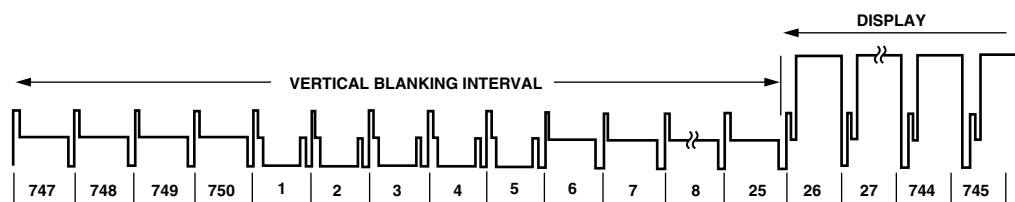


Figure 69. SMPTE296M (720p)

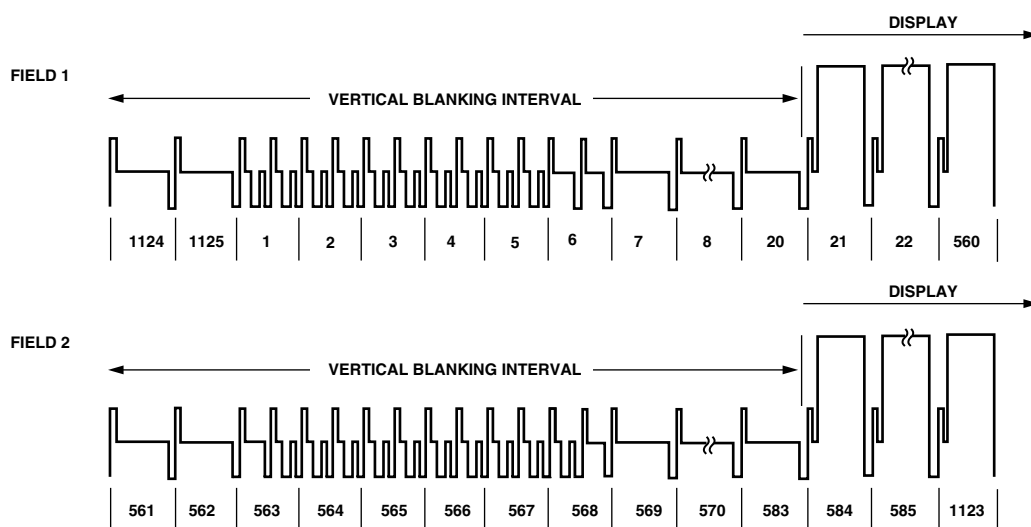


Figure 70. SMPT274M (1080i)

OUTLINE DIMENSIONS  
Dimensions shown in inches and (mm).

52-Lead Plastic Quad Flatpack  
(S-52)

