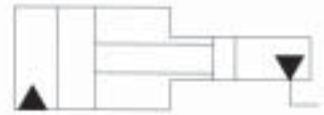
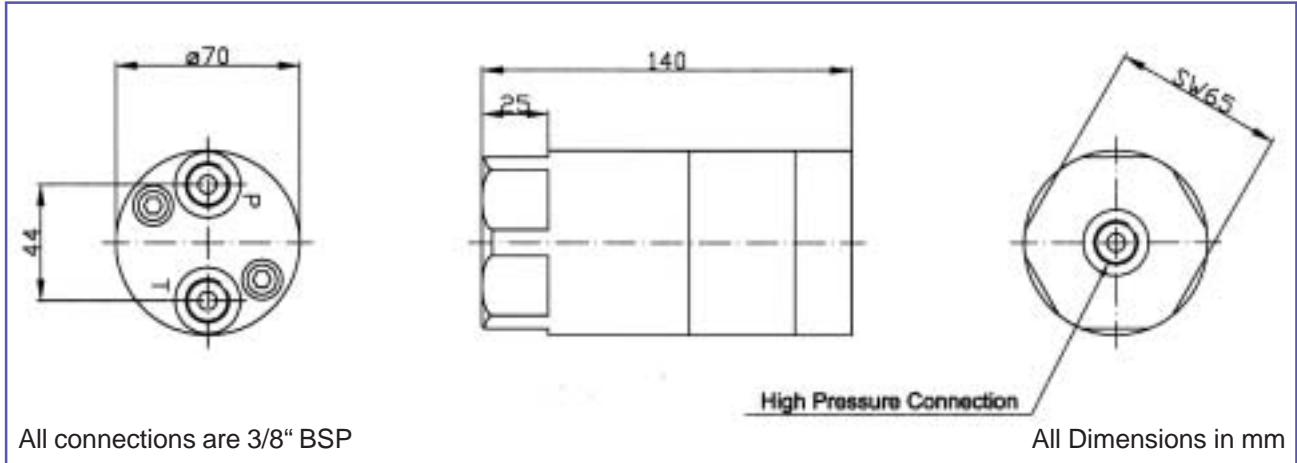


# The MP-M

Pressure Intensifier



The MP-M pressure intensifier is an In-Line model, designed to be positioned in a low pressure hydraulic system, and will provide high pressure exactly where needed. The MP-M will automatically increase a supplied pressure to the higher end pressure required (max. 800 bar). Having high pressure valves incorporated, including the POV (see page 3), a pilot operated check valve, for relieving the high pressure side, the MP-M offers a cost effective solution for intensification needs. Controlling the high pressure side is done by valves on the low pressure side through the MP-M, allowing the intensifier to be installed in most existing as well as new hydraulic circuits. The MP-M intensifier is offered with 5 different intensification ratios as standard with additional ratios on request to meet most intensification requirements.



## Filtration Requirement:

10 micron nominal, max. 19/16 according to ISO 4406

## Flow & Pressure:

The supplied flow and pressure to the MP-M are dependant on the intensification ratio chosen. The table shows the flow and pressure for each model. Please note flow values will vary with the viscosity of the fluid. Inlet values must not be exceeded.

Ratio (i)	Inlet Flow (LPM / GPM)	Outlet Flow Q1 (LPM / GPM)	Outlet Flow Q2 (LPM / GPM)	Inlet Pressure (Bar / Psi)	Outlet Pressure (Bar / Psi)
1.8	25.0 / 6.6	5.0 / 1.32	1.5 / 0.39	200 / 2,900	360 / 5,220
3.4	35.0 / 9.3	5.0 / 1.32	2.8 / 0.74	200 / 2,900	680 / 9,860
4.0	35.0 / 9.3	4.0 / 1.06	2.4 / 0.63	200 / 2,900	800 / 11,600
5.0	35.0 / 9.3	3.5 / 0.93	1.9 / 0.50	160 / 2,320	800 / 11,600
7.0	35.0 / 9.3	3.0 / 0.80	1.3 / 0.34	114 / 1,653	800 / 11,600

## Ordering Code:

## Example:

MP-M with intensification 4.0: **MP-M-4.0**

MP- M - T

Intensification				
1.8	3.4	4.0	5.0	7.0

# Scanwill

Fluid Power ApS