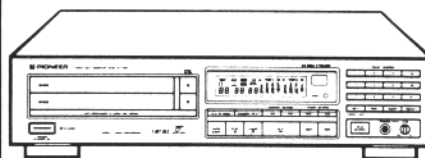


# Service Manual

**PIONEER®**  
The Art of Entertainment



• The above illustration shows the PD-T507.

[www.rtvcenter.com](http://www.rtvcenter.com)  
repairtips, servicemanuals  
forum, chassispictures...

ORDER NO.  
ARP2201

## TWIN-TRAY COMPACT DISK PLAYER

# PD-T507 PD-T307

### PD-T507 AND PD-T307 HAVE THE FOLLOWING:

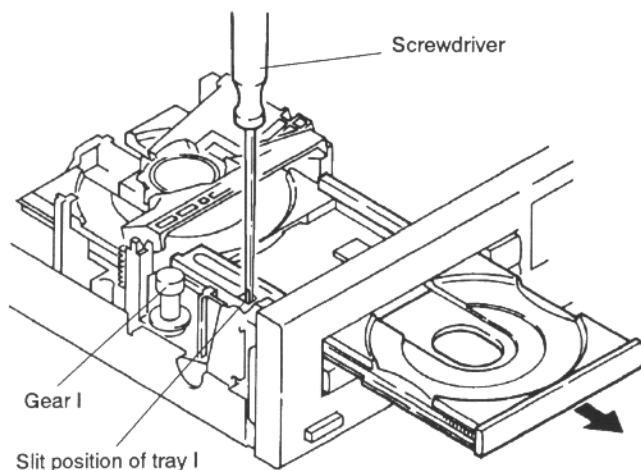
Type	Model		Power Requirement	Remarks
	PD-T507	PD-T307		
KC	○	○	AC120V only	
MEM	○	○	AC220V-230V	
UB	○	—	AC230V-240V	
UPW	○	○	AC230V-240V	
SD	○	○	AC110V, 120V-127V, 220V, 240V (switchable)	

- This manual is applicable to the PD-T507/KC, MEM, UB, PD-T307/KC and MEM types.
- As to the PD-T507/MEM, UB and PD-T307/MEM types, refer to page 93-94.
- As to the other types, refer to applicable service manuals.
- As to the mechanism descriptions, refer to the PD-Z74T service guide (ARP2144).
- Ce manuel pour le service comprend les explications de réglage en français.
- Este manual de servicio trata del método ajuste escrito en español.

## 2. REMOVING AND MOUNTING OF EACH BLOCK

### ● REMOVAL OF TRAY I AND TRAY II

1. Open the tray I.
2. Insert the flat blade screwdriver into the slit in the left of tray I. Pull out the tray I by pushing the screwdriver.



\* When remove the tray II, open it first, insert the flat blade screwdriver into the slit in the right of tray II, and pull out the tray by pushing the screwdriver.

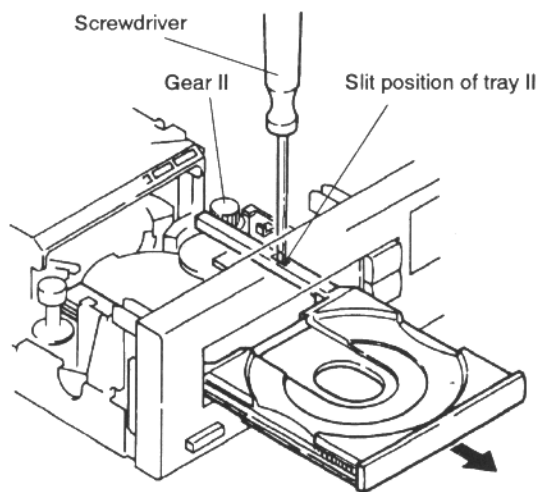


Fig. 1

### ● MOUNTING OF TRAY I

1. Set the disc II to the clamp position and open the tray I.
2. Align the 1st tooth of tray I to ungrooved portion of gear I, and insert the tray I.

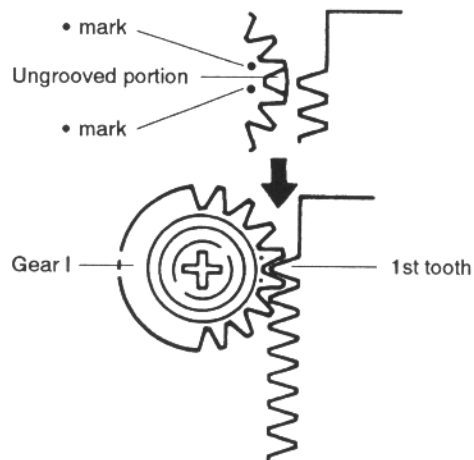


Fig. 2

### ● MOUNTING OF TRAY II

1. Set the disc I to the clamp position and open the tray II.
2. Align the 1st tooth of tray II to □ marked position of gear II, and insert the tray II.

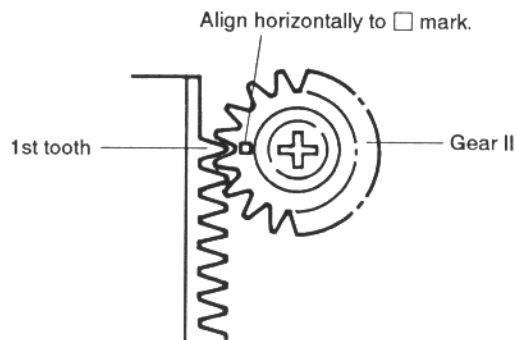


Fig. 3

## ● MOUNTING AND POSITIONING OF MAIN CAM, FOLLOW GEAR, GEAR I AND GEAR II

Set the following gears to the position as shown by arrows.

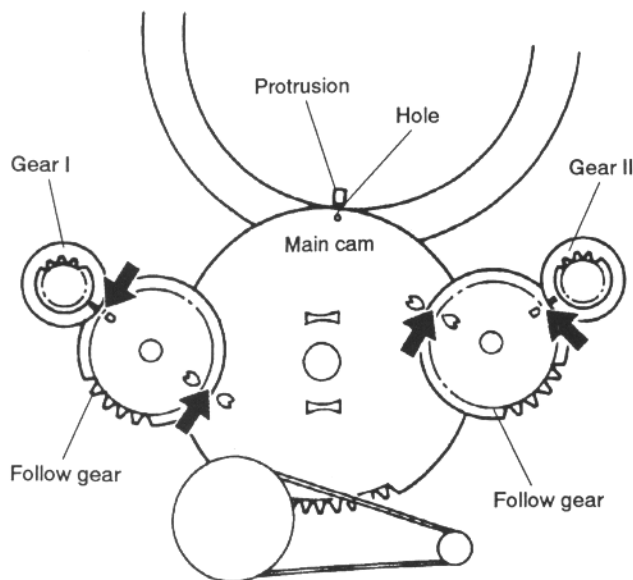


Fig. 4

## ● MOUNTING OF CLAMPER ASSEMBLY

Mount the clamber assembly by aligning the protrusion portion as shown in the figure.

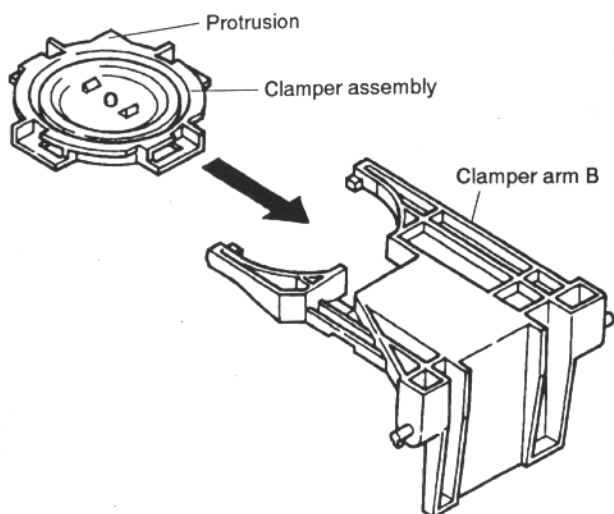


Fig. 5

## ● REMOVING THE BONNET

1. Remove six screws to the bonnet.
2. Remove the bonnet by pulling up it in the vertically direction of arrow.

To easily remove the bonnet, pull outward on both sides of the bonnet then pull it diagonally toward the rear of the unit.

**Note:** If you pull up the rear base of the bonnet to remove it as in the conventional manner, the hooks shown in Fig. 6 may be caught and the hooks on the front panel side may be deformed.

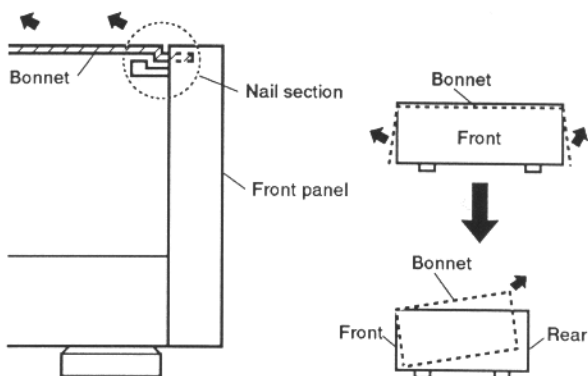


Fig. 6

[www.rtvcenter.com](http://www.rtvcenter.com)  
 repair tips, service manuals  
 forum, chassis pictures...

3.

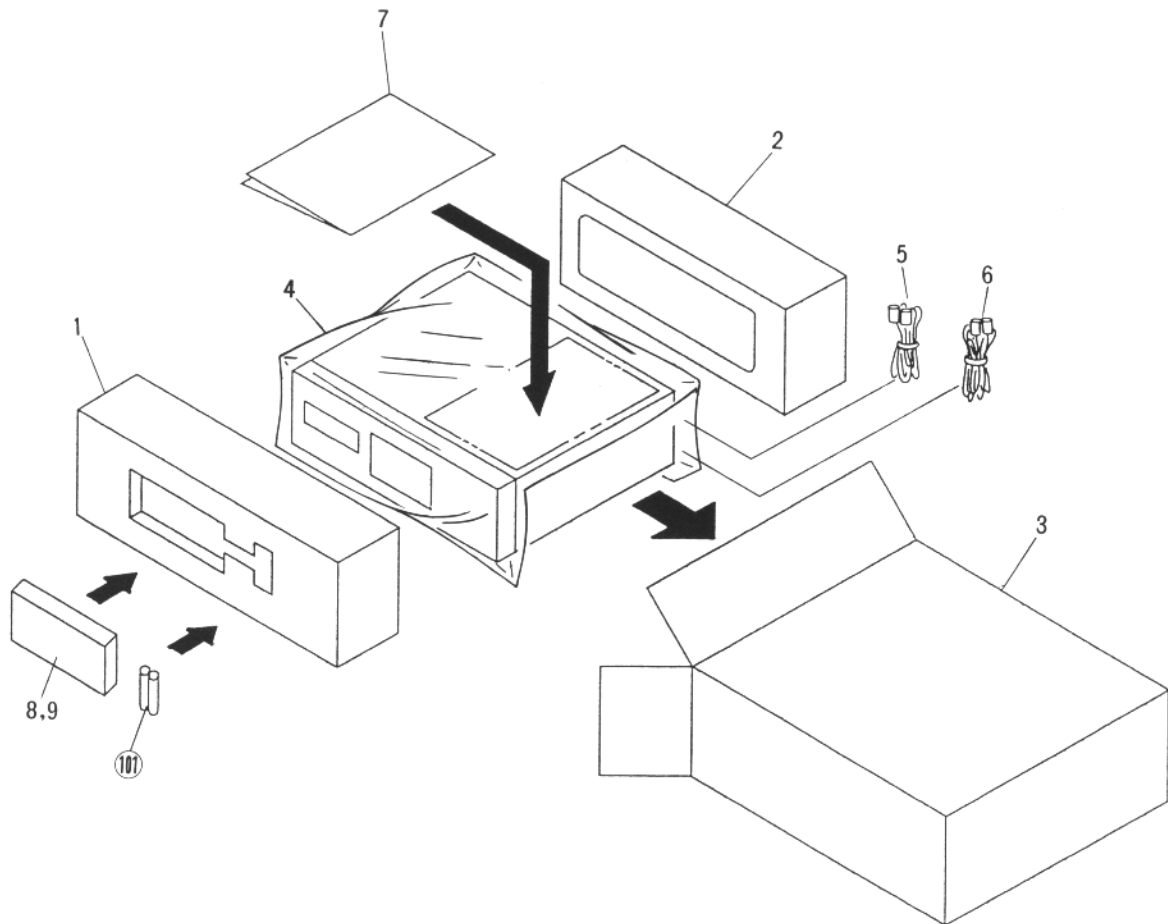
Parts

Mark

### 3. PACKING


#### Parts List (For PD-T507/KC and PD-T307/KC types)

Mark	No.	Description	Part No.
	1	Protector (F)	PHA1116
	2	Protector (R)	PHA1117
	3	Packing case (For PD - T507)	PHG1072
		Packing case (For PD - T307)	PHG1701
	4	Sheet	Z23 - 007
	5	Connection cord (with mini plug)	PDE - 319
	6	Connection cord	PDE1109
	7	Operating instructions (English/French)	PRE1143
	8	Remote control unit (CU - PD047) (For PD - T507)	PWW1062
	9	Battery cover (For PD - T507)	PZN1010
101		Battery (R03, AAA) (For PD - T507)	



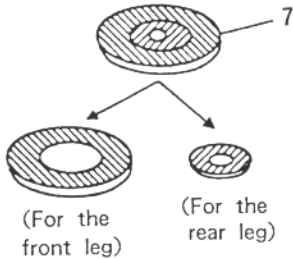
4. EXPLODED VIEWS AND PARTS LIST

NOTES:

- Parts without part number cannot be supplied.
- The  mark found on some component parts indicates the importance of the safety factor of the part. Therefore, when replacing, be sure to use parts of identical designation.
- Parts marked by "⊙" are not always kept in stock. Their delivery time may be longer than usual or they may be unavailable.

4.1 EXTERIOR

Parts List (For PD-T507/KC and PD-T307/KC types)

Mark	No.	Description	Part No.	Mark	No.	Description	Part No.
⊙	1	Mother board assembly (For PD - T507)	PWM1464		101	Sub assembly	
⊙		Mother board assembly (For PD - T307)	PWM1460		102	SW assembly	
⊙	2	Display assembly (For PD - T507)	PWZ2132		103	Headphone assembly	
⚠	3	Strain relief (For PD - T507)	CM - 22C		104	Under base	
⚠		Strain relief (For PD - T307)	CM - 22		105	Rear base	
	4	31P F.F.C/30V	PDD1074		106	Name plate	
⚠	5	AC Power cord (For PD - T507)	PDG1015		107	Function panel (B)	
⚠		AC Power cord (For PD - T307)	PDG1040				
⚠	6	Power transformer	PTT1187	<p>Note :</p> <p>* 1 : The stopper consist of the big ring part and the small ring part.</p> <p>If you stik the stopper to the leg, stick the big ring part to the front leg, and the small ring part to the rear leg.</p> 			
	7	Stopper	PNM1070				
	8	Insulator	VNK1095				
	9	Headphone knob	PAC1370				
	10	Power button	PAC1540				
	11	Play button (B)	PAC1547				
	12	O/C button	PAC1548				
	13	Time button (B)	PAC1549				
	14	Program button (B)	PAC1594				
	15	Display window	PAM1465				
	16	Tray name plate (A)	PNW1901				
	17	Tray name plate (B)	PNW1902				
	18	LED lens	PNW2019				
	19	Function panel assembly	PEA1154				
	20	Bonnet	PYY1147				
	21	Play button (A)	PAC1550				
	22	Track button	PAC1579				
	23	Display window	PAM1464				
	24	29P F.F.C/30V	PDD1075				
	25	Function panel assembly	PEA1125				
	26	Leg assembly	PXA1201				
	27	Display assembly	PWZ2130				
	28	Screw	BBZ30P060FMC				
	29	Screw	BBZ30P080FZK				
	30	Screw	BBZ30P120FMC				
	31	Screw	FBT40P080FMC				
	32	Screw	IBZ30P080FCC				
	33	Screw	PDZ30P050FMC				
	34	Time button (A) (For PD - T307)	PAC1546				

# Exterior

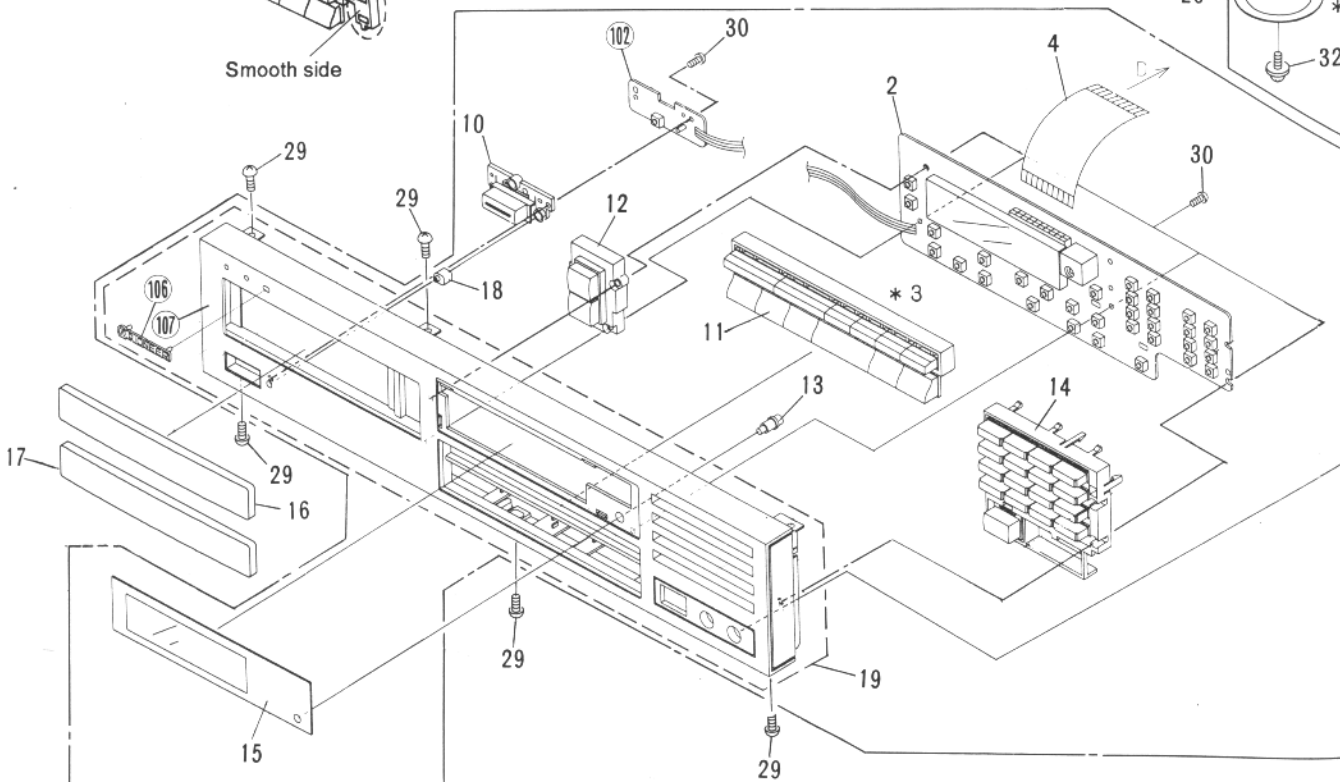
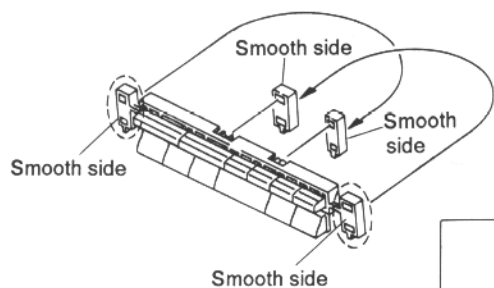
A

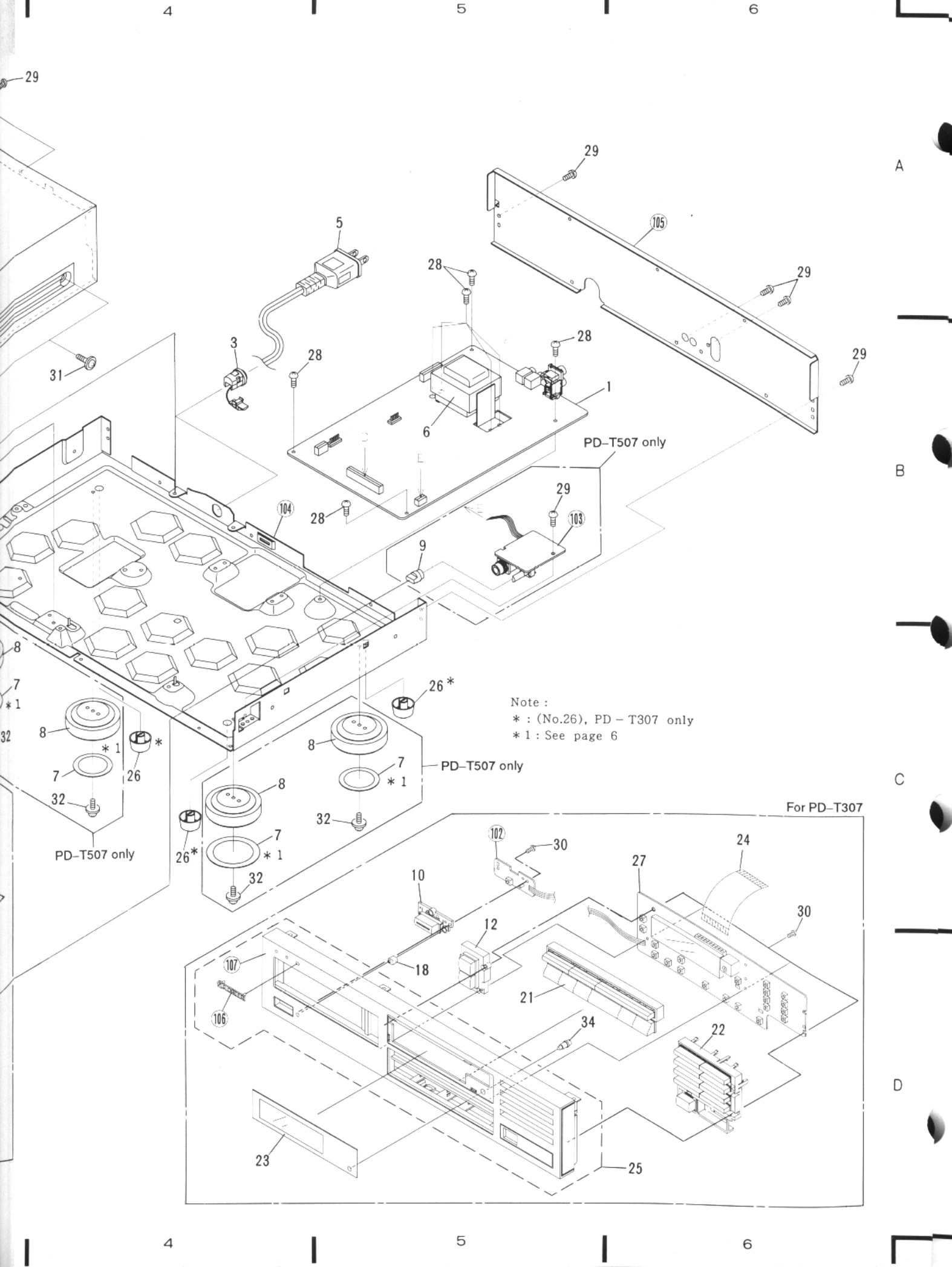
B

C

D

\*3: When replacing the play button B (PAC1547), cut both side tips from the new part and turn them so that their smooth sides face forwards the rear panel, then insert as illustrated below.





Note :

\* : (No.26), PD - T307 only

\* 1 : See page 6

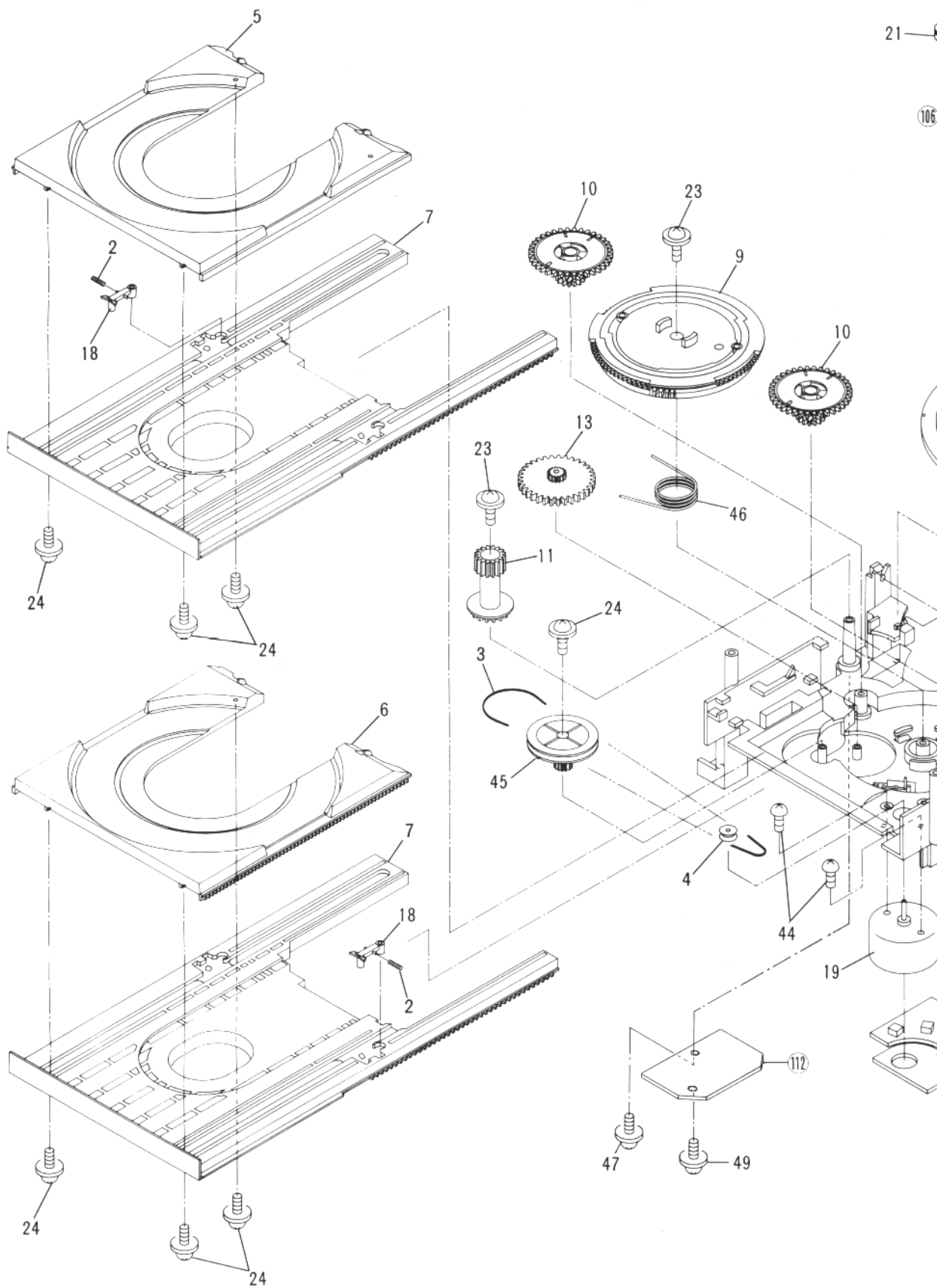
For PD-T307

A

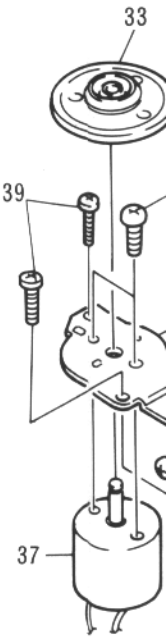
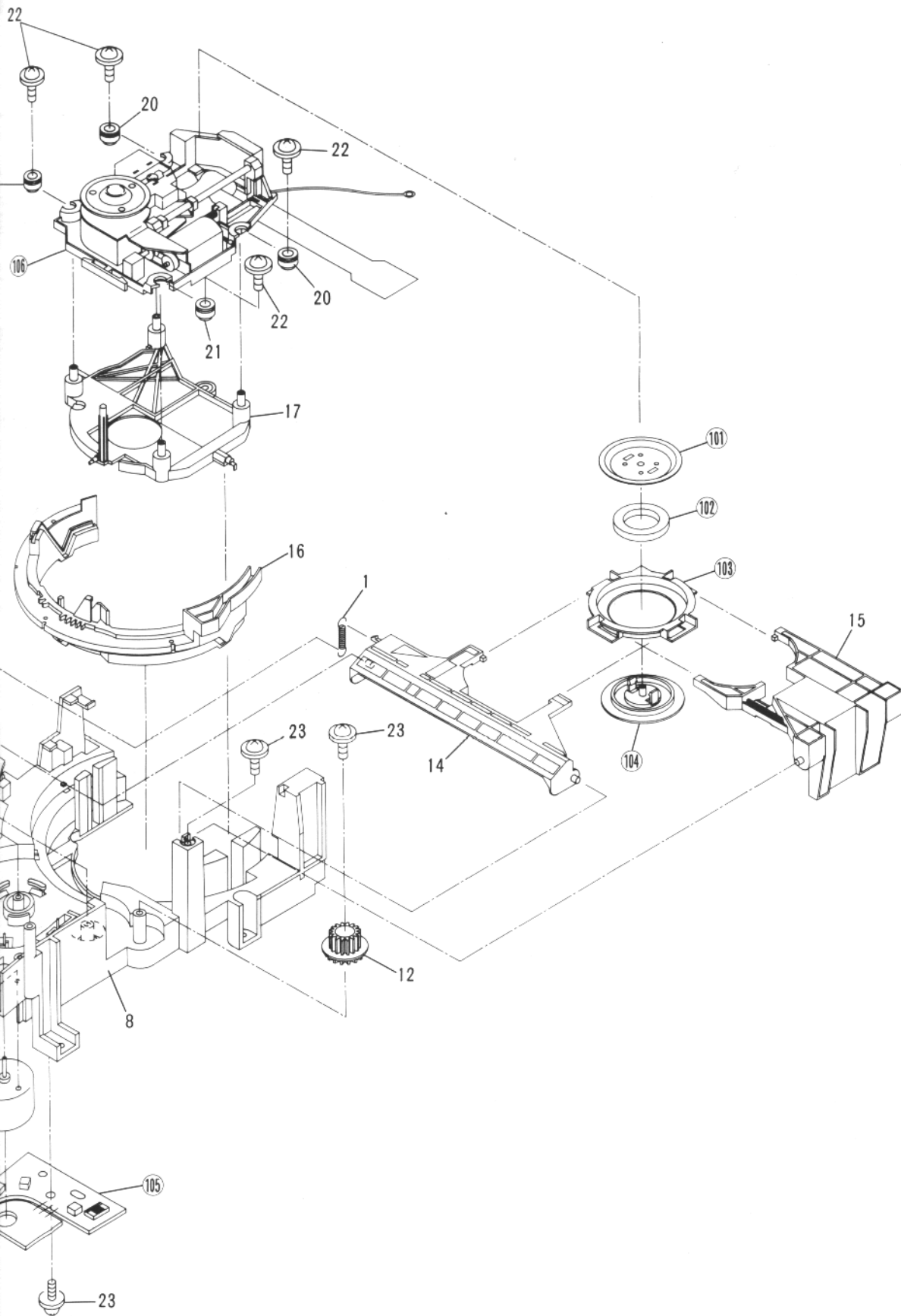
B

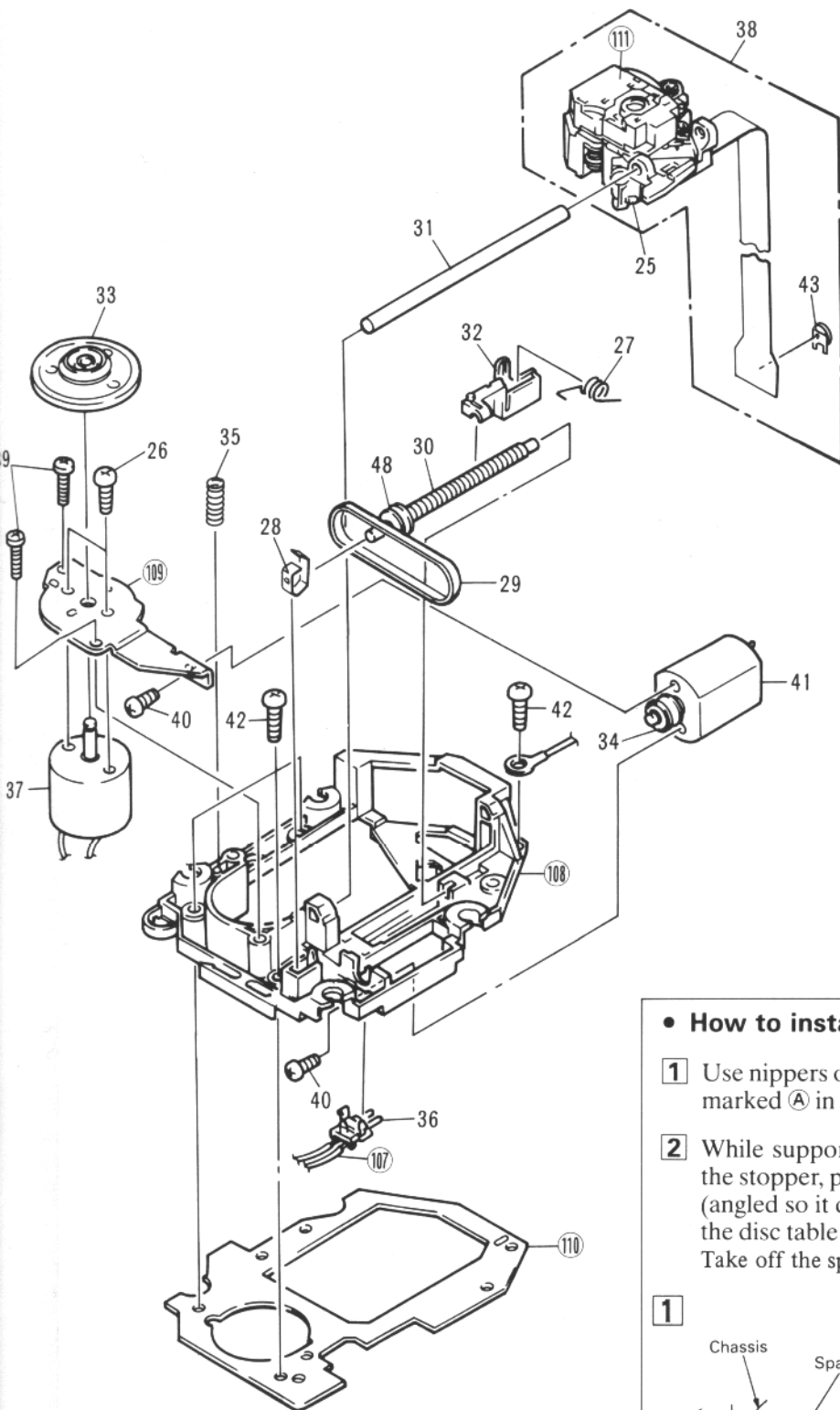
C

D



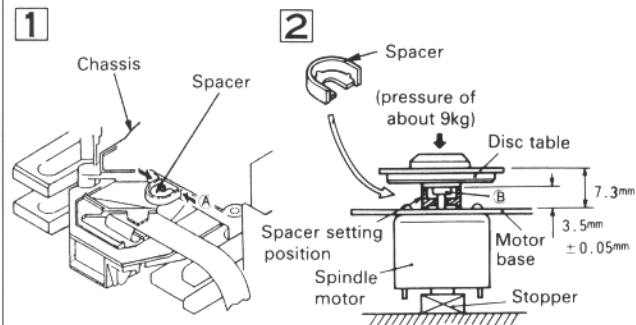






### • How to install the disc table

- 1 Use nippers or other tool to cut the two sections marked **A** in figure **1**. Then remove the spacer.
- 2 While supporting the spindle motor shaft with the stopper, put spacer on top of the motor base (angled so it doesn't touch section **B**), and stick the disc table on top (takes about 9kg pressure). Take off the spacer.



## Parts List of Mechanism Section

Mark	No.	Description	Part No.
A	1	Clamp spring	PBH1103
	2	Lever spring	PBH1104
	3	Belt	PEB1106
	4	Motor pulley	PNW1634
	5	Tray 1	PNW1839
	6	Tray 2	PNW1840
	7	Sub tray	PNW1841
	8	Loading base	PNW1842
	9	Main cam	PNW1843
	10	Follow gear	PNW1844
	11	Gear 1	PNW1845
	12	Gear 2	PNW1846
	13	Idler gear	PNW1847
	14	Clamper arm U	PNW1850
	15	Clamper arm B	PNW1851
B	16	Clamp cam	PNW1852
	17	Float base	PNW2041
	18	Lock lever	PNW1854
	19	Motor (LOADING)	PXM1010
	20	Floating rubber	PEB1014
	21	Floating rubber	PEB1132
	22	Screw	PBA1048
	23	Screw	IPZ30P080FMC
	24	Screw	IPZ20P080FMC
	25	Chip capacitor	CKSYF105Z16
	26	Screw	JFZ20P025FMC
	27	Drive spring	PBH1084
	28	Plate spring	PBK1057
	29	Belt	PEB1072
	30	Drive screw	PLA1003
C	31	Guide bar	PLA1071
	32	Half nut	PNW1605
	33	Disc table	PNW1608
	34	Pulley	PNW1634
	35	Earth spring	PBH1009
	36	Push switch	DSG1014
	37	Spindle motor assembly (with oil)	PEA1028
	38	Pick - up assembly	PEA1030
	39	Screw	BPZ20P080FZK
	40	Screw	PMZ20P030FMC
	41	Motor (CARRIAGE)	PXM1013
	42	Screw	PBZ30P080FMC
	43	Semi - fixed resistor	PCP1008
	44	Screw	PMZ26P040FMC
	45	Gear pulley	PNW1848
D	46	Push spring	PBH1105
	47	Screw	IPZ30P200FMC
	48	Pulley	PNW1066
	49	Screw	IBZ30P120FMC

Mark	No.	Description	Part No.
	101	Yoke	
	102	Magnet	
	103	Clamper holder	
	104	Clamper S	
	105	Mechanism P.C.B assembly	
	106	Servo mechanism assembly	
	107	Connector assembly (6P)	
	108	Mechanism chassis	
	109	Motor base	
	110	Mechanism base	
	111	Actuator cover	
	112	Sub plate	