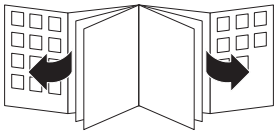


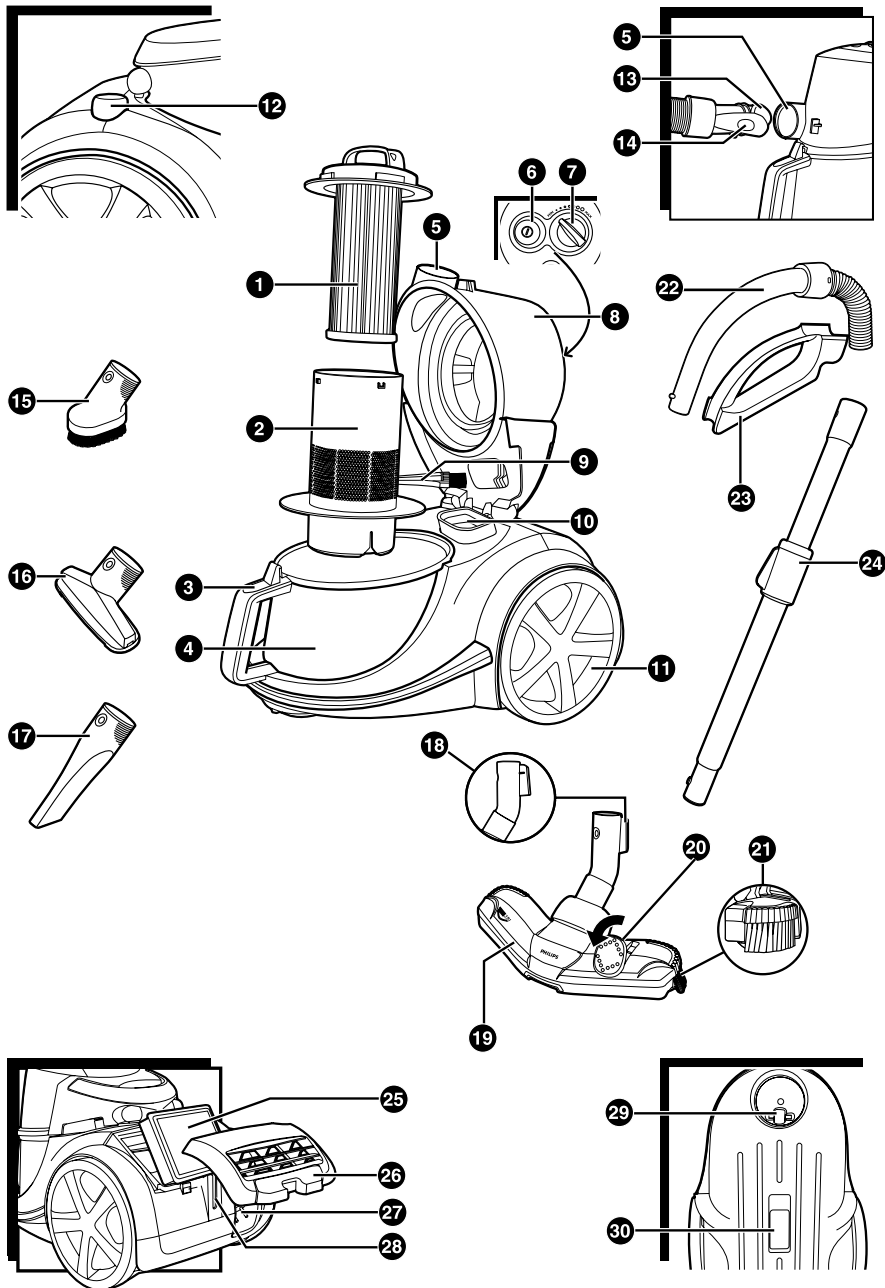
FC9202



PHILIPS



2



ENGLISH 6

简体中文 II

General description (fig. 1)

1. Filter cylinder
2. Filter cylinder case
3. Dust bucket release button
4. Dust bucket
5. Hose connection opening
6. On/off button
7. Suction power knob
8. Cover
9. Cleaning brush
10. Motor Protection Filter
11. Rear wheel
12. Cord rewind button
13. Hose connector
14. Hose connector release button
15. Small brush
16. Small nozzle
17. Crevice tool
18. Parking ridge
19. Tri-Active nozzle
20. Rocker switch for carpet/hard floor settings
21. Side brush
22. Hose with handgrip
23. Accessory holder
24. Telescopic tube
25. Super Clean Air HEPA Filter
26. Filter grille (open)
27. Mains plug
28. Parking slot
29. Swivel wheel
30. Type plate

Important

Read these instructions for use carefully before using the appliance and save them for future reference.

- Check if the voltage indicated on the appliance corresponds to the local mains voltage before you connect the appliance.
- Do not use the appliance if the plug, the cord or the appliance itself is damaged.
- If the mains cord of this appliance is damaged, it must be replaced by Philips, a service centre authorised by Philips or similarly qualified persons in order to avoid a hazard.
- Keep the appliance out of the reach of children.
- Never suck up water or any other liquid. Never suck up flammable substances and do not suck up ashes until they are cold.
- Do not point the hose at the eyes or ears nor put it in your mouth when the vacuum cleaner is switched on and the hose is connected to the vacuum cleaner.
- Sucking up large objects may cause the air passage in the tube or hose to become obstructed. If this happens, the blockage indicator will turn red to indicate that there is an obstruction that needs to be removed.
- Never use the appliance without the Motor Protection Filter. This could damage the motor and shorten the life of the appliance.
- Only use the Philips filter cylinder supplied with the appliance.

Electromagnetic fields (EMF)

This Philips appliance complies with all standards regarding electromagnetic fields (EMF). If handled properly and according to the instructions in this user manual, the appliance is safe to use based on scientific evidence available today.

Preparing for use

Connecting accessories

Hose

- 1** To connect the hose, push it firmly into the appliance ('click') (fig. 2).
- 2** To disconnect the hose, press the release button and pull the hose out of the appliance (fig. 3).

Telescopic tube

- 1** Connect the tube to the handgrip of the hose by pressing the spring-loaded lock button on the handgrip and inserting the handgrip into the tube. Fit the spring-loaded lock button into the opening in the tube ('click') (fig. 4).
- 2** To disconnect the tube from the handgrip, press the spring-loaded lock button and pull the handgrip out of the tube.

Use the same method to connect and disconnect the nozzles.

- 3** Adjust the tube to the length you find most comfortable during vacuum cleaning (fig. 5).

Tri-Active nozzle

- D** The Tri-Active nozzle is a multi-purpose nozzle for carpets and hard floors (fig. 6).
The side brushes catch more dust and dirt at the sides of the nozzle and allow you to clean better along furniture and other obstacles.
- D** The opening at the front of the nozzle allows you to suck up larger particles (fig. 7).

Hard floor setting:

- 1** Push the rocker switch on top of the nozzle with your foot to make the brush strip come out of the housing. At the same time the wheel will be lifted to prevent scratching and to increase manoeuvrability (fig. 8).

Carpet setting:

- 2** Push the rocker switch again to make the brush strip disappear into the nozzle housing. The wheel will be lowered automatically (fig. 9).

Crevice tool, small nozzle and small brush.

- 1** Connect the crevice tool, the small nozzle (specific types only) or the small brush directly to the handgrip or to the tube (fig. 10).

Accessory holder

- D** The accessory holder can simply be snapped onto the handgrip (fig. 11).

The accessories can be stored in the accessory holder by pushing them into the holder. To detach the accessories, pull them out of the holder.

You can store two accessories at a time in the accessory holder:

- Crevice tool and small nozzle (specific types only) (fig. 12).

Please note the way in which the small nozzle must be placed in the accessory holder.

- Crevice tool and small brush (fig. 13).

Using the appliance

- 1 Pull the cord out of the appliance and put the mains plug in the wall socket.
- 2 Switch the appliance on by pressing the on/off button on top of the appliance (fig. 14).
- During vacuum cleaning you can adjust the suction power by means of the knob on top of the appliance (fig. 15).
 - Use maximum suction power for vacuum cleaning very dirty carpets and hard floors.
 - Use minimum suction power for vacuum cleaning curtains, table carpets, etc.
- If you want to pause for a moment, you can park the tube in a convenient position by inserting the ridge on the nozzle into the parking slot (fig. 16).

Storage

- 1 Switch the appliance off and remove the mains plug from the wall socket.
- 2 Rewind the mains cord by pressing the cord rewind button (fig. 17).
- 3 Attach the nozzle to the appliance by inserting the ridge on the nozzle into the slot. Store the appliance in horizontal position, with all wheels touching the floor (fig. 16).
- 4 Always put the Tri-Active nozzle in the carpet setting when you store it and prevent the side brushes from becoming bent (fig. 9).

Emptying the dust bucket

Always unplug the appliance before emptying the dust bucket.

The dust bucket is not dishwasher-proof.

- Empty the dust bucket as soon as the dust level has reached the round disc of the filter cylinder case (fig. 18).
- 1 Switch the appliance off and disconnect the hose from the appliance.
 - 2 Unlock the cover by pressing the release button on top of the handle of the dust bucket (1). Swing the cover open (2) (fig. 19).
 - 3 Remove the bucket by lifting it out of the appliance (fig. 20).
 - 4 Hold the bucket over a dustbin and lift the filter cylinder case out of the bucket. Empty the bucket (fig. 21).
 - 5 If you wish, you can clean the dust bucket with cold tap water and some washing-up liquid.
 - 6 Put the filter cylinder case back into the dust bucket and put the bucket back into the appliance.
 - 7 Close the cover firmly ('click').

Always put the filter cylinder case back into the bucket, otherwise the appliance cannot be switched on.

Cleaning and maintenance of filters

Always unplug the appliance before cleaning or replacing the filters.

The filter cylinder and the filter cylinder case are not dishwasher-proof.

Filter cylinder

Clean the filter cylinder every 2 months.

- 1** Switch the appliance off and disconnect the hose from the appliance.
 - 2** Unlock the cover by pressing the release button on top of the handle of the dust bucket (1). Swing the cover open (2) (fig. 19).
 - 3** Remove the bucket by lifting it out of the appliance (fig. 20).
 - 4** Lift the filter cylinder case out of the bucket (fig. 21).
 - 5** Turn the handle on top of the filter cylinder case anticlockwise (1) and lift the filter cylinder out of the case (2) (fig. 22).
 - 6** Clean the filter cylinder and the case with the brush supplied. Brush from the top of the filter downwards along the ribs of the filter (fig. 23).
- Only use the brush supplied! Other brushes may damage the filter cylinder.
- 7** If there is dirt on the inside of the case, empty the case over a dustbin.
 - 8** If you wish, you can clean the filter cylinder case with cold tap water and some washing-up liquid.
 - 9** If you wish to wash the filter cylinder, wash it thoroughly with only water. Do not use any soap, washing-up liquid or other detergent to clean the filter. Let it dry completely before reinserting it into the case (fig. 24).
 - 10** Put the filter cylinder back into the case and turn the handle clockwise until the filter cylinder locks into position.

Make sure the filter cylinder is securely fixed in the case.

- 11** Put the case with the filter cylinder back into the dust bucket.

Motor Protection Filter

Clean the Permanent Motor Protection Filter every time you clean the filter cylinder case.

- 1** Take the Motor Protection Filter out the appliance and clean the filter by tapping the dust out of it over a dustbin (fig. 25).
 - 2** Press the clean filter firmly back into the filter compartment to ensure that it is properly placed.
- !** If the Motor Protection Filter is very dirty, you can also rinse it with cold tap water.
- Do not use any soap, cleaning agent or other detergent to clean the filter!

Super Clean Air HEPA Filter

This appliance is equipped with the Super Clean Air HEPA Filter. This filter is located in the back of the appliance and is able to remove 99.5% of all particles down to 0.0003 mm in size from the outlet air. This is not only includes normal house dust, but also harmful microscopic vermin such as dust mites and their excrements, which are well-known causes of respiratory allergies.

10 ENGLISH

Replace the HEPA Filter every six months.

- 1** Open the filter grille (fig. 26).
- 2** Remove the old filter (fig. 27).
- 3** Insert the new filter into the appliance.
- 4** Close the filter grille and push the bottom corners until they snap home (fig. 28).

Ordering accessories and filters

If you have any difficulties obtaining filters or other accessories for this appliance, please contact the Philips Customer Care Centre in your country or consult the worldwide guarantee leaflet.

- Philips filter cylinders are available under service number 4322 005 17520.
- Super Clean Air filters are available under type number FC8030.
- Super Clean Air HEPA Filters are available under type number FC8031.

Guarantee & service

If you need information or if you have a problem, please visit the Philips website at www.philips.com or contact the Philips Customer Care Centre in your country (you will find its phone number in the worldwide guarantee leaflet). If there is no Customer Care Centre in your country, turn to your local Philips dealer or contact the Service Department of Philips Domestic Appliances and Personal Care BV.

Troubleshooting

- 1** The suction power is insufficient.
 - Check if the suction power knob is in maximum position.
 - Check if the filter cylinder is filled with dirt. If necessary, clean this filter.
 - Check if the other filters need to be cleaned or replaced.
 - Check if the blockage indicator has changed colour. If so, the nozzle, tube or hose may be blocked up. To remove the obstruction, disconnect the blocked-up item and connect it (as far as possible) the other way around. Switch the vacuum cleaner on to force the air through the blocked-up item in opposite direction (fig. 29).
- 2** The appliance cannot be switched on.
 - Check if the filter cylinder case with the filter cylinder in it has been inserted into the dust bucket.

产品图示（图一）

1. 滤芯
2. 滤芯罩
3. 集尘桶释放钮
4. 集尘桶
5. 软管连结口
6. On/of f开关
7. 吸力控制旋钮
8. 机盖
9. 清洁刷
10. 马达保护滤网
11. 后轮
12. 电线回卷按钮
13. 软管接头
14. 软管接头释放钮
15. 毛刷
16. 小号吸嘴
17. 缝隙吸嘴
18. 摆放固定头
19. 全方位清洁吸尘嘴
20. 地毯/硬地面转换开关
21. 边刷
22. 弯管
23. 配件贮存架
24. 伸缩式吸管
25. HEPA 高效能过滤网
26. 过滤器栅格（打开状态）
27. 电源插头
28. 摆放固定槽
29. 方向脚轮
30. 型号铭牌

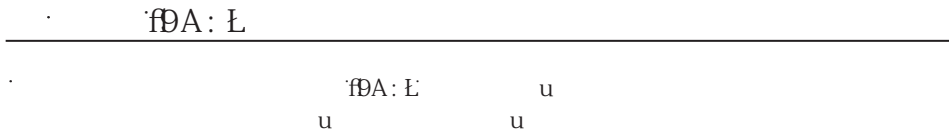
注意事项

使用产品前，请仔细阅读本使用说明书，并妥善保管以备将来参考。

- 连接电源之前，请务必检查本产品上所标电压与当地电压是否一致。
- 如果插头、电线或电器本身已损坏，请不要使用本电器。
- 如果本电器的电源线已损坏，必须由飞利浦公司或经飞利浦批准的服务中心更换，以免危险。
- 本产品应保存在儿童无法触及之处。
- 切勿吸取水或其它液体。切勿吸取易燃物质，并且不要吸取未冷却的灰烬。
- 在吸尘器电源打开并且软管与吸尘器相连时，不要将软管指向双眼或耳朵，也不要将其放在口中。
- 如果吸进了体积大的物体，可能会阻塞硬管或软管的空气通道。这时阻塞指示灯会变为红色，指示有阻塞物需要清除。

12 简体中文

- 切勿在未安装马达保护滤网的情况下使用吸尘器。这将会使马达受损，并缩短吸尘器的使用寿命。
- 只能使用本吸尘器随附的飞利浦滤芯。



准备使用

连接附件

软管

- 要连接软管，请将其推入到产品中（会听到咔哒一声 (图 2)）。
- 取下软管时，按下释放钮，将软管从吸尘器中拔出 (图 3)。

伸缩式吸管

- 按下握把上的弹簧式锁定钮，将握把插入硬管中，即可将硬管连接到握把上。将弹簧式锁定钮卡入硬管上的开孔中（会听到咔哒一声 (图 4)）。
 - 要将硬管与握把分离，请按下弹簧式锁定钮并将握把从硬管中拉出。
- 用同样的方法连接及断开吸嘴。
- 将硬管调整到吸尘过程中感觉最舒适的长度 (图 5)。

Tri-Active 吸尘嘴

- Tri-Active 吸尘嘴是用于清洁地毯和硬质地板的一种多用途吸尘嘴（图 6）。吸尘嘴侧面的侧毛刷可以清洁更多灰尘和污垢，让您沿家具和其他障碍物边缘进行清洁。
- 吸尘嘴正面的开口允许吸取体积较大的灰尘微粒 (图 7)。

硬质地板设置：

- 用脚推动吸尘嘴顶部的按钮使刷条外翻，同时轮子将伸出，以防止擦伤地板并提高灵活性 (图 8)。

地毯设置：

- 再次推动吸尘嘴顶部的按钮使刷条没入吸尘嘴机壳中。轮子将自动降低 (图 9)。

缝隙吸嘴，小号吸嘴和毛刷

- 直接将缝隙吸嘴，小号吸嘴（指定型号有）或毛刷安装在握把或硬管上 (图 10)。

附件架

- 附件架可简单地钩挂到握把上 (图 11)。
- 只需将附件推入附件支架，就可将其固定在附件支架上。

附件支架上可同时存放两个附件：

- ▶ 缝隙吸嘴和小号吸嘴（仅限于特定机型）（图 12）。
请注意小型吸尘嘴必须放在附件架上的特定方向。
- ▶ 缝隙吸嘴和小型毛刷（图 13）。

使用产品

- 1 将电线从吸尘器中拉出，并将插头插入电源插座。
- 2 按下吸尘器顶部的 on/off（开/关）按钮来开启电源（图 14）。
 - ▶ 吸尘时，可用吸尘器顶端的吸力控制旋钮来调整吸力强度（图 15）。
 - 使用最大吸力清洁脏污程度高的地毯和硬面地板。
 - 清洁门帘，台布或其他物品时，可用最小吸力。
 - ▶ 如果想暂停，要将管子安放妥当，可将吸尘嘴的夹片插入固定吸嘴位置（图 16）。

存放

- 1 关闭产品电源，并将吸尘器插头从电源插座中拔出。
- 2 按下电源线回卷按钮将电线回卷到吸尘器中（图 17）。
- 3 将吸尘嘴的夹片插入摆放固定槽中，可以将吸尘嘴固定在吸尘器上。将吸尘器水平放置，轮子着地（图 16）。
- 4 存放前，必须先将全方位清洁吸嘴处于地毯设置，以免侧面的毛刷被弯曲（图 9）。

倒空集尘桶

倒空集尘桶之前，切记拔下吸尘器的插头。

集尘桶不能使用洗碗机清洗。

- ▶ 当灰尘累积到达滤芯罩的圆盘处，就应立即倒空集尘桶（图 18）。
 - 1 关闭吸尘器的电源，从吸尘器上拆下软管。
 - 2 按下集尘桶握把顶部的释放钮，将上盖解锁（1），打开上盖（2）（图 19）。
 - 3 从吸尘器中提起集尘桶（图 20）。
 - 4 在垃圾箱的上方，将滤芯罩从集尘桶中提出。将集尘桶倒空（图 21）。
 - 5 如果您愿意，您还可以用洗涤剂清洗集尘桶，并在自来水龙头下用冷水冲洗。
 - 6 将滤芯罩放回集尘桶，并将集尘桶放回吸尘器。
 - 7 将机罩关闭（听到咔哒声）。

切记将滤芯罩放回集尘桶，否则吸尘器无法启动。

清洁和更换滤网

清洁或更换过滤器之前，切记拔下吸尘器的插头。

滤芯和滤芯罩不能使用洗碗机清洗。

滤芯

每2个月清洁滤芯。

- 1 关闭吸尘器的电源，从吸尘器上拆下软管。
- 2 按下集尘桶握把顶部的释放钮，将上盖解锁（1），打开上盖（2）（图 19）。
- 3 从吸尘器中提起集尘桶（图 20）。
- 4 从集尘桶中提起滤芯（图 21）。
- 5 逆时针转动滤芯罩顶端的把手（1），将滤芯从滤芯罩中提出（2）（图 22）。
- 6 用随附的刷子清洁滤芯和滤芯罩。沿着过滤器的纹路，从上到下刷（图 23）。
只能使用随附的刷子！其他刷子可能损坏滤芯。
- 7 如果滤芯罩的内部很脏，应在垃圾桶的上方将其倒空。
- 8 如果想清洗滤芯罩，则滤芯罩可以用冷自来水加清洁剂清洗。
- 9 如果想清洗滤芯，可以彻底清洗，但只能用水清洗。切勿用任何肥皂，清洗液或其他清洁剂清洗。在装入滤芯罩以前，应使其完全干燥（图 24）。
- 10 将滤芯装回滤芯罩内，顺时针转动把手，直到滤芯锁定位置为止。

确保滤芯完全固定在罩内。

- 11 将滤芯罩与滤芯一起装回集尘桶。

马达保护滤网

每次清洁滤芯罩时，应清洗永久性马达过滤器。

- 1 将电机保护过滤器从吸尘器中取出，在垃圾桶上将灰尘从马达保护过滤器中清除（图 25）。
 - 2 将清洁的过滤器放回过滤器仓，确保定位得当。
- 如果马达保护过滤器特别脏，也可以在自来水水龙头下用冷水冲洗。
- 不要用任何肥皂，清洁剂或其他去垢剂清洁过滤器。

HEPA高效能过滤网

本产品安装了 HEPA 高效能过滤网。这种滤网安装在产品的后部，可以从排出空气中过滤 99.5% 的最小为 0.0003 毫米的颗粒。这不仅能过滤正常的室内灰尘，而且还能过滤显微级别的寄生虫，如尘螨和它们的排泄物。众所周知，这些都是呼吸道过敏源。

应每6个月更换 HEPA 高效能过滤网。

- 1 打开滤网栅格（图 26）。
- 2 取出旧的滤网（图 27）。
- 3 将新滤网插入吸尘器中。
- 4 关闭过滤器栅格，推下面的角，直到卡住其位置（图 28）。

订购附件和滤网

如果您购买本产品的滤网或其他附件有困难，请和您所在国家的飞利浦客户服务中心联系，或参阅全球保证书。

- 飞利浦滤芯的订购编码 4322 005 17520。（透过飞利浦售后服务中心订购）
- 高效能过滤网的型号为 FC8030。
- HEPA 高效能过滤网的型号为 FC8031。

保修与服务

如果您需要更多信息,或者您有任何问题, 请浏览飞利浦网站: www.philips.com, 或和您所在国家的飞利浦顾客服务中心联系 (您可在全球保修卡上找到服务中心的电话号码)。 如果您所在的国家没有任何顾客服务中心,则请和当地的飞利浦经销商或飞利浦家庭小电器的售后服务部联系。

排除故障指南

1 吸力不足。

- 检查吸力控制旋钮是否在最大位置。
- 检查滤芯是否充满灰尘。如果有必要，清洁过滤器。
- 检查其他过滤器是否需要清洁或更换。
- 检查阻塞指示灯是否改变颜色。如果改变了颜色，则吸嘴、硬管、或软管被阻塞。要清除阻塞物，请将阻塞的部分拆下，并将它以相反方向连接（尽可能离远一些）。打开吸尘器的电源，强迫气流反方向通过阻塞的部位 (图 29)。

2 吸尘器的电源无法开启。

- 检查带有滤芯的滤芯罩是否已插入集尘桶。

产品型号/规格

| 型号 | 额定功率 | 额定电压/ 频率 |
|-------------|-------|------------|
| FC9202 (有调) | 1500W | 220V~ 50Hz |

| 名称/ 数量 | FC9202 |
|--------|--------|
| 软管 | 1 |
| 可伸缩吸管 | 1 |
| 缝隙吸嘴 | 1 |
| 小号吸嘴 | 1 |
| 毛刷 | 1 |
| 配件贮存架 | 1 |
| 全方位吸尘嘴 | 1 |

注意事项

维修与养护

- 除说明书上注明允许使用者进行维护和保养的项目外，其他的维护和保养的项目必须由飞利浦指定的维修中心进行。
- 切勿让儿童使用本产品。
- 当使用完毕或离开时，要切断电源。
- 当吸尘器与吸尘软管连接，并接上电源后，切勿将吸尘软管靠近眼睛、耳朵或放在口里。
- 对产品在使用时如出现异常的情况(如噪音、气味、温度升高、烟雾等)应立刻切断电源，停止继续使用。
- 使用者可联系飞利浦全国顾客免费服务热线、当地的飞利浦办事处或飞利浦维修中心进行咨询。

PHILIPS

产品：飞利浦家用
真空卧式吸尘器

型号：FC9202
额定电压：220V~
额定频率：50Hz
额定输入功率：1500 W
生产日期：请见产品底部
产地：中国

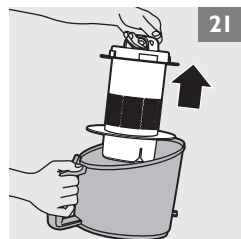
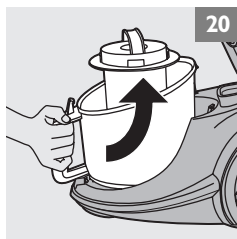
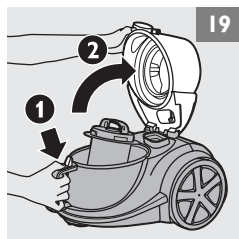
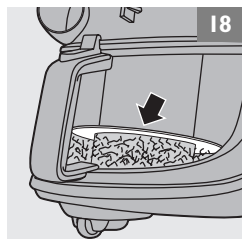
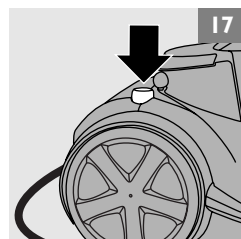
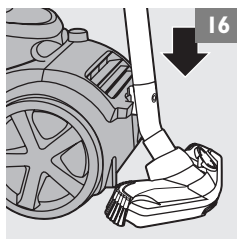
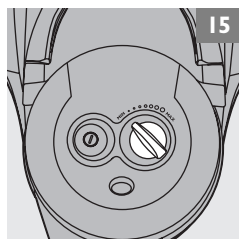
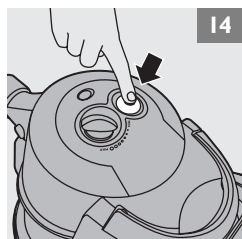
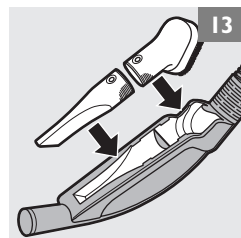
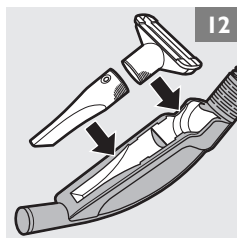
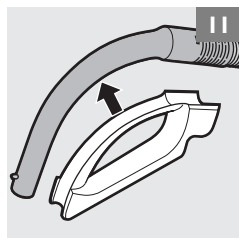
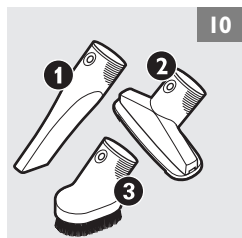
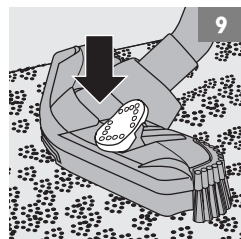
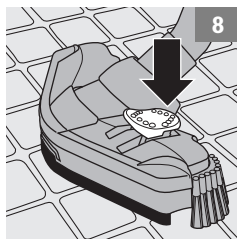
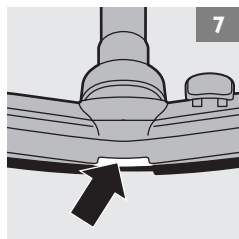
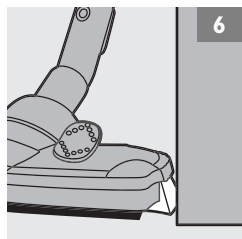
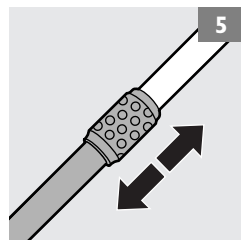
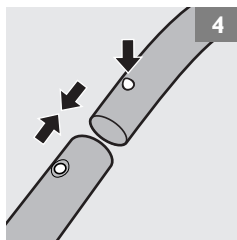
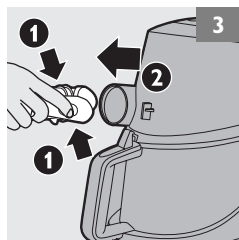
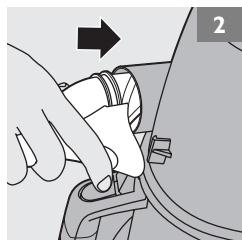


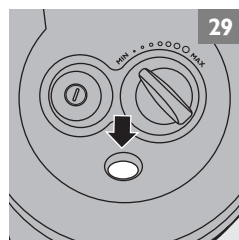
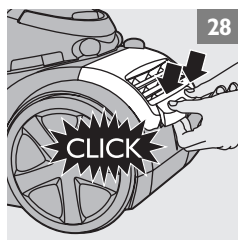
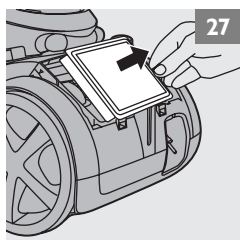
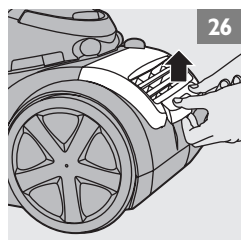
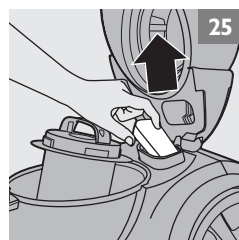
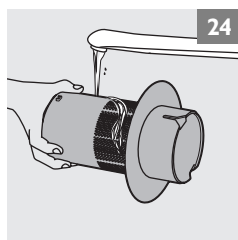
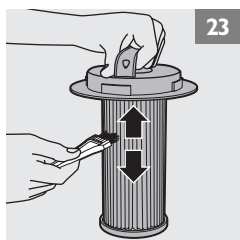
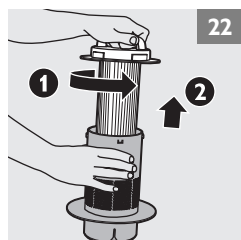
飞利浦家电（苏州）有限公司
中国苏州新区玉山路
邮政编码：215011
电话：0512—68253516

全国顾客服务热线：4008 800 008

本产品根据GB4706.1—2005，GB4706.7—2004，
GB4343.1—2003及GB17625.1—2003制造

请妥善保管本使用说明书
发行日期：2006/11/08







www.philips.com



100% recycled paper
100% papier recyclé

4222 003 30983