

Chun Ju

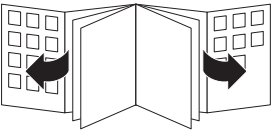
飞利浦家用真空卧式吸尘器

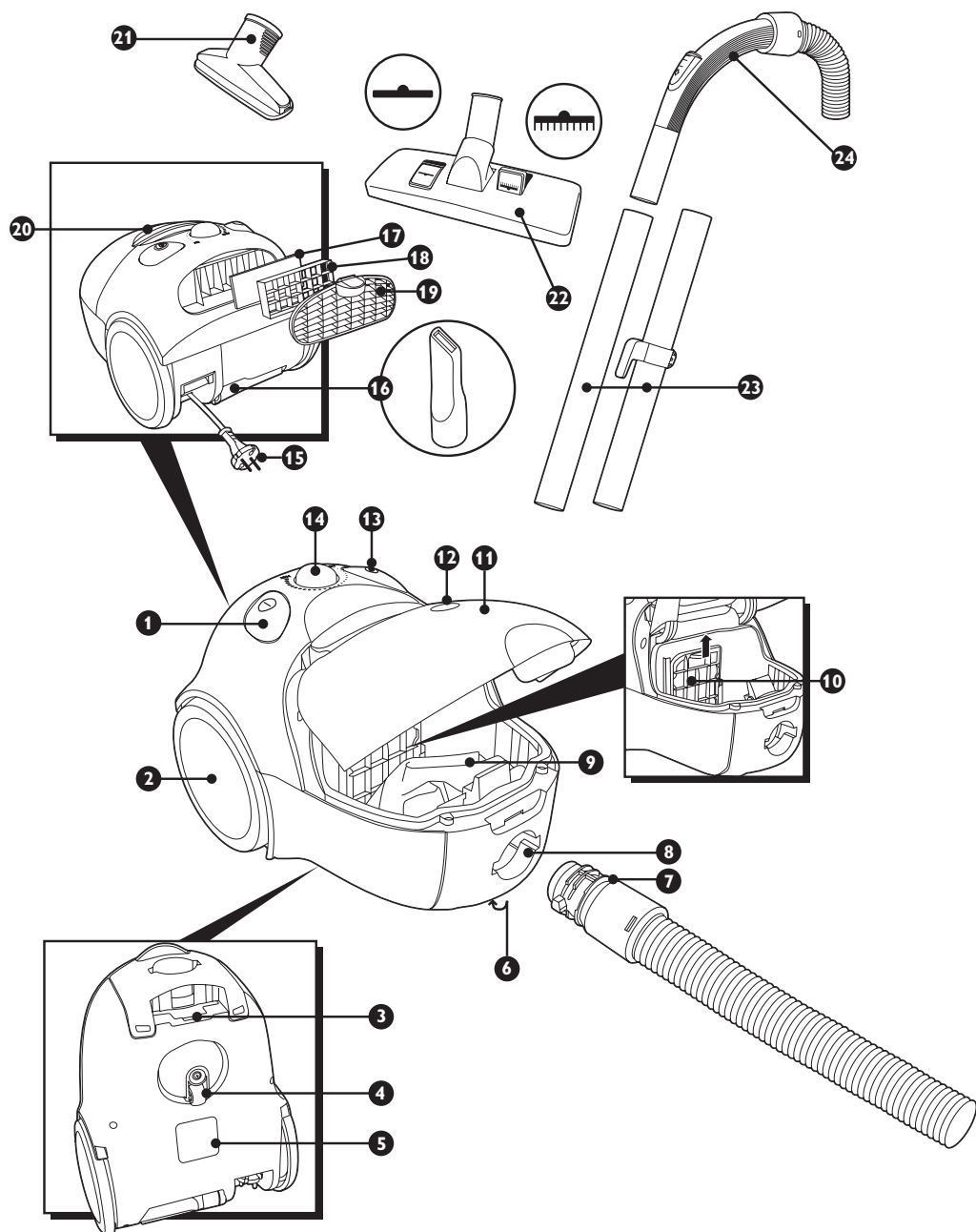


FC8348, FC8347, FC8344

请妥善保管本使用说明书

PHILIPS





ENGLISH 6

简体中文 10

General description

- 1 On/off button
- 2 Rear wheel
- 3 Storage slot for tube clip
- 4 Swivel wheel
- 5 Type plate
- 6 Handgrip
- 7 Hose connector
- 8 Hose connection opening
- 9 Dustbag
10. Motor Protection Filter
11. Dust cover
12. 'Dustbag full' indicator
13. Cord rewind button
14. Suction power control (FC8347, FC8348)
15. Plug
16. Crevice tool
17. Exhaust Filter
18. Filter holder
19. Grille
20. Handgrip
21. Small nozzle (FC8348)
22. Combi nozzle
23. Tubes with clip
24. Handgrip of hose with suction power slide

Important

Read these instructions for use carefully before using the appliance and save them for future reference.

- ▶ Check if the voltage indicated on the appliance corresponds to the local mains voltage before you connect the appliance.
- ▶ Do not use the appliance if the plug, the cord or the appliance itself is damaged.
- ▶ If the mains cord of this appliance is damaged, it must be replaced by Philips, a service centre authorised by Philips or similarly qualified persons in order to avoid a hazard.
- ▶ Keep the appliance out of the reach of children.
- ▶ Never suck up water or any other liquid. Never suck up flammable substances and do not suck up ashes until they are cold.
- ▶ Do not point the hose at the eyes or ears nor put it in your mouth when the vacuum cleaner is switched on and the hose is connected to the vacuum cleaner.
- ▶ When the vacuum cleaner is used to suck up fine dust, the pores of the dustbag may become clogged, causing the passage of air through the dustbag to become obstructed. As a result, the dustbag-full indicator will indicate that the dustbag needs to be replaced. Even though the dustbag may not be full, it must be replaced.
- ▶ Never use the appliance without the Motor Protection Filter. This could damage the motor and shorten the life of the appliance.
- ▶ Only use Philips double-layer paper dustbags or the reusable dustbag provided.

Preparing for use

Hose

- 1** To connect the hose, push it into the appliance and turn it clockwise (fig. 1).
To disconnect the hose, turn it anticlockwise and pull it out of the appliance.

Tubes

- 1** Connect the tubes to each other and to the handgrip by inserting the narrow section into the wider section while turning it a little. The tube with the clip is the lower tube (fig. 2).
You can connect the accessories in the same way.
Disconnect the accessories and tubes by pulling them and turning them a little.

Combi nozzle

The combi nozzle can be used on either carpets (with the brush strips folded in) or hard floors (with the brush strips folded out):

- 1** Push the rocker switch on top of the combi nozzle with your foot to make the brush strips for cleaning hard floors come out of the nozzle housing (fig. 3).
- 2** Push the rocker switch on the other side to make the brush strips disappear into the housing (fig. 4).

Crevice tool and small nozzle (specific types only)

The crevice tool can be used to clean hard-to-reach places.

- To use the crevice tool, pull it out of the storage compartment at the rear of the vacuum cleaner (fig. 5).

The small nozzle can be used for vacuum cleaning small areas, e.g. the seats of chairs and sofas.

Using the appliance

Vacuum cleaning

- 1** Pull the cord out of the appliance and put the mains plug in the wall socket.
- 2** Switch the appliance on by pushing the on/off button on top of the appliance with your foot.
- You can carry the vacuum cleaner by the handle on top of the appliance (fig. 6).

Adjusting suction power

You can adjust the suction power by means of:

- the slide on the handgrip, or (fig. 7).
- the electronic suction power control (specific types only) (fig. 8).

Storage

- 1** Switch the appliance off and remove the mains plug from the wall socket.
- 2** Rewind the mains cord by pressing the cord rewind button.

- 3 Put the appliance in upright position and attach the lower tube to the appliance by means of the clip (fig. 9).

Replacement

Replacing the dustbag

Replace the dustbag as soon as the 'dustbag full' indicator has changed colour permanently.

Always unplug the appliance before replacing the dustbag.

- 1 Open the cover (fig. 10).
- 2 Pull the dustbag holder towards you to unlock the dustbag (1) and lift the dustbag out of the appliance (2) (fig. 11).
- 3 Put a new dustbag into the appliance. Position the opening of the dustbag directly opposite the hose connection opening (1). Pull the front of the dustbag forwards until it locks into place in the holder (2) (fig. 12).

Reusable dustbags

If provided, you can use the reusable dustbag instead of paper dustbags. The reusable dustbag can be used and emptied repeatedly.

For removing and inserting the reusable dustbag, simply follow the instructions for replacing paper dustbags.

To empty the reusable dustbag:

- 1 Remove the clip by sliding it off the dustbag sideways (fig. 13).
- 2 Shake out the contents into a dustbin.
- 3 Close the dustbag by sliding the clip back onto the bottom edge of the dustbag.

Replacing filters

Always unplug the appliance before replacing the filters.

Motor Protection Filter

Replace the Motor Protection Filter when you insert the first of a new set of filters.

- 1 Open the cover and remove the dustbag (fig. 11).
- 2 Remove the filter holder by pulling it upwards at an angle (fig. 14).
- 3 Replace the filter and put the filter holder back into the appliance (fig. 15).
- 4 Put the dustbag back into the appliance (fig. 12).

Exhaust Filter

Replace the Exhaust Filter every 6 months.

- 1 Remove the grille at the back of the appliance (fig. 16).
- 2 Remove the filter holder (fig. 17).
- 3 Remove the old filter and place the new filter in the holder (fig. 18).
- 4 Put the filter holder back into the appliance with the filter facing the vacuum cleaner.

- 5** Put the grille back into the vacuum cleaner by first hooking the bottom edge into the appliance and then pushing the grille towards the appliance until it locks into place with a click (fig. 19).

Ordering dustbags and filters

If you have any difficulties obtaining dustbags, filters or other accessories for this appliance, please contact the Philips Customer Care Centre in your country or consult the worldwide guarantee leaflet.

- Philips double-layer paper dustbags are available under type number FC8046.
- A new Motor Protection Filter and a new Exhaust Filter are provided free of charge with each new set of dustbags.

Guarantee & service

If you need information or if you have a problem, please visit the Philips website at www.philips.com or contact the Philips Customer Care Centre in your country (you will find its phone number in the worldwide guarantee leaflet). If there is no Customer Care Centre in your country, turn to your local Philips dealer or contact the Service Department of Philips Domestic Appliances and Personal Care BV.

Troubleshooting

I Insufficient suction power

- Check if the dustbag needs to be replaced.
- Check if the filters need to be replaced.
- Check if the slide on the handgrip is closed.
- Check if the electronic suction power control is in maximum position (specific types only).
- Check if the nozzle, tube or hose is blocked up. To remove the obstruction, disconnect the blocked-up item and connect it (as far as possible) the other way around. Switch the vacuum cleaner on to force the air through the blocked-up item in opposite direction (fig. 20).

产品图示

1. On/off (开/关) 按钮
2. 后轮
3. 吸嘴夹片插槽
4. 回转轮
5. 型号铭牌
6. 握把
7. 软管接头
8. 软管接口
9. 集尘袋
10. 马达保护滤网
11. 集尘箱盖
12. 集尘袋已满指示灯
13. 电线回卷按钮
14. 吸力控制旋钮 (FC8347, FC8348)
15. 插头
16. 缝隙吸嘴
17. 排风滤网
18. 过滤器支架
19. 滤网栅栏
20. 手柄
21. 小号吸嘴 (FC8348)
22. 两用吸尘嘴 (地板/地毯)
23. 带夹硬管
24. 软管手柄, 带推杆式吸力调控装置

注意事项

使用产品前, 请仔细阅读本使用说明书, 并妥善保管以备将来参考。

- 连接电源之前, 请务必检查本产品上所标电压与当地电压是否一致。
- 如果插头、电线或电器本身已损坏, 请不要使用本电器。
- 如果本电器的电源线已损坏, 必须由飞利浦公司或经飞利浦批准的服务中心更换, 以免危险。
- 本产品应保存在儿童无法触及之处。
- 切勿吸取水或其它液体。切勿吸取易燃物质, 并且不要吸取未冷却的灰烬。
- 在吸尘器电源打开并且软管与吸尘器相连时, 不要将软管指向双眼或耳朵, 也不要将其放在口中。
- 当吸尘器用于吸细小的灰尘, 集尘袋的洞孔可能会阻塞, 这将会使集尘袋已满指示灯显示集尘袋已满、需要更换, 即使集尘袋并没有装满。
- 切勿在未安装马达保护滤网的情况下使用吸尘器。这将会使马达受损, 并缩短吸尘器的使用寿命。
- 只能用飞利浦双层纸制集尘袋或随附的循环使用集尘袋。

准备使用

软管

- 1 要将软管连接，将软管推入吸尘器并以顺时针方向旋转即可 (图 1)。
要将软管从吸尘器上拆下，请将管端逆时针方向转动，并拉出软管。

硬管

- 1 将硬管互相连接，连接到握把的方法是将窄的部分插入宽的部分，同时稍作旋转。带夹子的硬管应处于较低位置 (图 2)。
其他附件也可以同样连接。
要断开连接，把硬管或附件稍作旋转，拔出即可。

两用吸尘嘴（地板/地毯）

两用吸尘嘴可以在地毯（刷条内翻）和硬式地板（刷条外翻）上使用。

- 1 用脚按下两用（地板/地毯）吸尘嘴顶部的刷毛转换块，使清洁硬式地板的刷条从吸嘴中伸出来 (图 3)。
- 2 用脚按动转换块的另一面，可使刷条收缩回吸嘴内 (图 4)。

缝隙吸嘴和小号吸嘴（仅限于特定机型）

缝隙吸嘴可用于难以清理的位置。

- 要使用缝隙吸嘴，先将其从吸尘器后部的储存箱中拉出 (图 5)。
小型吸嘴可以用来进行小面积的清洁，例如椅垫及沙发。

使用产品

使用吸尘器

- 1 将电线从吸尘器中拉出，并将插头插入电源插座。
 - 2 用脚压下吸尘器顶部的 on/off（开/关）按钮来开启电源。
- 搬动吸尘器时，应使用产品顶部的手柄 (图 6)。

调整吸力

您可以通过以下方式调整吸力：

- 通过握把上的滑动开关即可调整吸力，或 (图 7)
- 通过电子吸力控制旋钮即可调整吸力（仅限于特定机型）(图 8)。

存放

- 1 关闭产品电源，并将吸尘器插头从电源插座中拔出。
- 2 按下电源线回卷按钮将电线回卷到吸尘器中。

12 简体中文

2 将吸尘器直立起来，并利用夹子将吸管架在吸尘器上 (图 9)。

更换集尘袋

更换集尘袋

一旦“集尘袋已满”指示灯持久改变颜色,应立即更换集尘袋。

更换积尘袋前，切记拔下电器插头。

1 打开上盖 (图 10)。

2 将集尘袋固定架向后推 (1)；将集尘袋提起并取出 (2) (图 11)。

3 将一个新的集尘袋放入产品。将集尘袋的开口与软管接口对正 (1)。向前拉集尘袋的前端，直到与支架锁定为止 (2) (图 12)。

可循环使用集尘袋

如果有随附的循环使用的集尘袋，就可以不用纸制集尘袋。循环使用的集尘袋可于灰尘倒空后重复使用。

拆卸和放入可循环使用集尘袋的方法，只须遵循更换纸制集尘袋的说明即可。

要倒空可循环使用集尘袋：

1 将夹子从集尘袋侧面滑下，取下夹子 (图 3)。

2 通过摇动倒出里面的积尘。

3 将夹子安装回集尘袋下端, 封闭集尘袋。

更换滤网

更换滤网前，切记拔下电器插头。

马达保护滤网

当插入第一套新的滤网时，应更换马达保护滤网。

1 打开盖子，取下集尘袋 (图 11)。

2 将滤网支架向上拉，可取下支架 (图 14)。

3 更换滤网，并将滤网支架放回产品 (图 15)。

4 将集尘袋放回产品 (图 12)。

排风滤网

每 6 个月应更换排风滤网。

1 从产品的后面取下栅栏 (图 16)。

2 取下滤网支架 (图 17)。

3 从支架上取下旧的滤网，装上新的滤网 (图 18)。

4 让滤网面向吸尘器，将滤网支架放回产品。

5 将栅栏重新安装到吸尘器上。首先将栅栏底部钩在吸尘器中，然后推动栅栏直到其扣合到位 (图 19)。

订购集尘袋及滤网

如果您在购买本产品的集尘袋、滤网或其他附件时遇到任何困难, 请和您所在国家的飞利浦客户服务中心联系, 或参阅全球保证书。

- 飞利浦双层纸制集尘袋的订购型号为 FC8046。
- 每套新的集尘袋都赠送新的马达保护滤网和排风滤网。

保修与服务

如果您需要信息或者有任何问题, 请浏览飞利浦网站: www.philips.com, 或和您所在国家的飞利浦顾客服务中心联系 (您可在全球保修卡上找到电话号码)。如果您所在的国家没有顾客服务中心, 则请和当地的飞利浦经销商或飞利浦家庭小电器的售后服务部联系。

排除故障指南

I 吸尘力不足

- 检查是否需要更换集尘袋。
- 检查是否需要更换滤网。
- 检查握把上的滑动开关是否固定。
- 检查电子吸力控制旋钮是否设置于最强力位置 (仅限于特定机型)。
- 检查吸嘴、硬管、软管是否被阻塞。要清除阻塞物, 请将阻塞的部分拆下, 并将它以相反方向连接 (尽可能离远一些)。打开吸尘器的电源, 强迫气流反方向通过阻塞的部位 (图 20)。

产品型号 / 规格

型号	额定功率	额定电压 / 频率
FC8344 (无调)	1200W	220V ~ 50Hz
FC8347 (有调)	1200W	220V ~ 50Hz
FC8348 (有调)	1200W	220V ~ 50Hz

产品附件名称及数量

名称 / 数量	FC8344	FC8347	FC8348
软管	1	1	1
塑料吸管	2	2	2
缝隙吸嘴	1	1	1
小号吸嘴	—	—	1
地板/地毯两用吸尘嘴	1	1	1
循环使用集尘袋	1	1	1
纸制集尘袋	—	—	1

注意事项

维护和保养

- 除说明书上注明允许使用者进行维护和保养的项目外，其他的维护和保养的项目必须由飞利浦指定的维修中心进行。
- 切勿让儿童使用此产品。
- 当使用完毕或离开时，要切断电源。
- 当吸尘器与吸尘软管连接，并接上电源后，切勿将吸尘软管靠近眼睛、耳朵或放进口中。
- 对产品在使用时如出现异常的情况(如噪音、气味、温度升高、烟雾等)应立刻切断电源，停止继续使用。
- 使用者可联系飞利浦全国顾客免费服务热线、当地的飞利浦办事处或飞利浦维修中心进行咨询。

PHILIPS

产品 : 飞利浦
家用真空卧式吸尘器
型号 : FC 8344 / FC 8347 / FC 8348
额定电压 : 220V ~
额定频率 : 50Hz
额定输入功率 : 1200瓦
产地 : 中国



珠海经济特区飞利浦家庭电器有限公司
中国珠海市三灶镇琴石工业区
邮编：519040 电话：0756-7621 898

全国顾客免费服务热线：800 8203 678

本产品根据国标GB4706.1-1998及GB4706.7-1999制造
本产品根据国标GB4343-1995及GB17625.1-2003制造

请妥善保管本使用说明书

发行日期：2004/06/30

