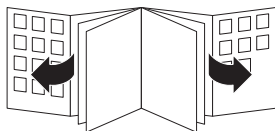
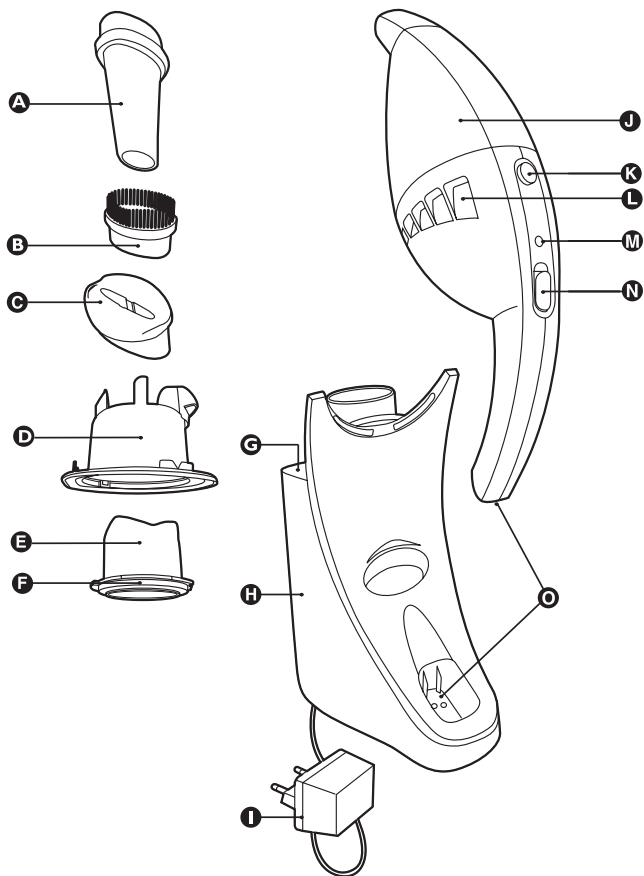


FC6055



PHILIPS



I

ENGLISH 6

简体中文 14

General description (fig. 1)

- A** Crevice tool
- B** Brush tool
- C** Squeegee
- D** Filter holder
- E** Filter
- F** Filter ring
- G** Storage slots for accessories
- H** Charging unit
- I** Adapter
- J** Dust compartment
- K** Dust compartment release button
- L** Exhaust air openings
- M** Charging light (LED)
- N** On/off slide
- O** Contact strips

Important

Read these instructions for use carefully before using the appliance and save them for future reference.

- D** Do not use the appliance if it is damaged in any way. Take it to an authorised Philips service centre for repair.
- D** Check if the voltage indicated on the adapter corresponds to the local mains voltage before you connect the appliance.
- D** The adapter and the charging unit of this appliance cannot be replaced. If the adapter or charging unit is damaged, the appliance must be discarded.
- D** Never suck up flammable substances or corrosive liquids and do not suck up ashes until they are cold.
- D** Never immerse the vacuum cleaner or the charging unit in water and do not let water enter the motor unit or the charging unit.
- D** Remove the adapter from the wall socket before cleaning the charging unit.
- D** Only charge the vacuum cleaner with the adapter and charging unit supplied. During charging, the adapter will feel warm to the touch. This is normal.

- Do not hold the appliance with the dust compartment pointing upwards and do not tilt the appliance to one side when sucking up liquids.
- Always switch the vacuum cleaner off after use.
- Keep the appliance out of the reach of children.
- The voltage on the contact strips in the charging unit is low (max. 12 volts) and therefore not dangerous.
- Never block the exhaust air openings during vacuuming.
- Switch the appliance off when recharging it.
- When the appliance has been used to suck up liquids, empty and dry the dust compartment before storing the appliance in the charging unit.
- To avoid the risk of electric shock, be careful when drilling holes in the wall to attach the charging unit, especially close to a wall socket.

Preparing for use

Installing the charging unit

- 1** You can attach the charging unit to the wall as indicated in the figure (fig. 2).

If you attach the charging unit to the wall, the space between the screw holes should be 70 mm.

- 2** You can also place the charging unit on a horizontal surface (e.g. a table or desk) (fig. 3).

- 3** Excess mains cord can be wound round the charging unit (fig. 4).

Charging the appliance

Charge the appliance for at least 16 hours before you use it for the first time.

- 1** Insert the adapter into the wall socket.
- 2** Place the vacuum cleaner on the charging unit (fig. 5).

- ▶ The charging light will go on to indicate that the appliance is charging (fig. 6).
- ▶ *The charging light will stay on as long as the appliance is connected to the charging unit and the adapter is in the wall socket.*
- ▶ *The charging light does not give any information about the charge level of the built-in batteries.*

Using the appliance

- 1** Push the on/off slide forwards to switch the appliance on (fig. 7).
- 2** Push the on/off slide backwards to switch the appliance off (fig. 8).
- 3** Leave the adapter in the wall socket and always put the vacuum cleaner back onto the charging unit immediately after use, even if the batteries are still almost fully charged.

Brush, crevice tool and squeegee

This appliance comes with three accessories:

- a brush tool to clean delicate surfaces;
- a crevice tool to clean hard-to-reach places;
- a squeegee to suck up liquids.

- 1** Take the accessory you want to use from the charging unit.
 - 2** Attach the accessory to the nozzle of the appliance (fig. 9).
- ▶ When sucking up liquids, hold the appliance with the nozzle pointing downwards at an angle of 30°. Make sure the squeegee touches the surface to be cleaned. Do not tilt the appliance to one side.

Stop sucking up liquids when the liquid level inside the dust compartment has reached the maximum indication line.

- ▶ Never hold the appliance with the on/off slide pointing downwards when the dust compartment is filled with liquid (fig. 10).

- ▶ Empty the dust compartment each time you have used the appliance to suck up a liquid.
- 3** You can store all accessories by placing them in the storage slots in the charging unit (fig. 11).

Cleaning

Always remove the adapter from the wall socket before cleaning the charging unit.

When you have used the appliance to suck up liquids, empty and dry the dust compartment.

- 1** Clean the appliance with a damp cloth.

Emptying the dust compartment

Make sure you empty the dust compartment and clean the filter regularly.

- 1** Hold the appliance over a dustbin and press the dust compartment release button (fig. 12).
- 2** Remove the filter holder from the dust compartment (fig. 13).
- 3** Empty the dust compartment with your free hand.
- 4** Clean the filter and the filter holder (fig. 14).
 - ▶ Remove the filter from the filter holder by turning it anticlockwise.
 - ▶ Clean the filter with a brush or with a normal vacuum cleaner if it is very dirty.
 - ▶ If necessary, you can rinse the filter in cold or lukewarm water.
- 5** Fasten the filter in the filter holder by turning it clockwise and put the filter holder into the dust compartment. Make sure you insert the filter holder in the correct way (fig. 15).

Never use the vacuum cleaner if the filter is still wet.

Replacement

- ▶ Replace the filter if it can no longer be cleaned properly (usually after having been cleaned about 50 times).
- 1** Remove the filter holder from the dust compartment (fig. 13).
- 2** Remove the filter from the filter holder by turning it anticlockwise (fig. 14).
- 3** Remove the filter from the ring by gently turning it anticlockwise (fig. 16).
- 4** Attach a new filter to the filter ring by turning it clockwise (fig. 17).
- 5** Push the tip of the filter inwards (fig. 18).
- 6** Fasten the filter in the filter holder by turning it clockwise. Put the filter holder back into the dust compartment (fig. 19).

Accessories

New filters are available under type no. FC8036. Contact your Philips dealer.

Environment

- ▶ Do not throw the appliance away with the normal household waste at the end of its life, but hand it in at an official collection point for recycling. By doing this you will help to preserve the environment (fig. 20).

Saving energy

If you are not going to use the appliance for a longer period of time, we advise you to remove the adapter from the wall socket to save energy.

Disposal of batteries

NiCd/NiMH batteries can be harmful to the environment and may explode if exposed to high temperatures or fire.

Batteries contain substances that may pollute the environment. Always remove the batteries before discarding the appliance or handing it in at an official collection point. Dispose of the batteries at an official collection point for batteries.

Only remove the batteries if they are completely empty.

Remove the batteries in the following way.

- 1** Let the appliance run until it stops, undo the screws and open the vacuum cleaner (fig. 21).
- 2** Cut the connecting wires one by one and remove the batteries (fig. 22).

Guarantee & service

If you need information or if you have a problem, please visit the Philips website at **www.philips.com** or contact the Philips Customer Care Centre in your country (you will find its phone number in the worldwide guarantee leaflet). If there is no Customer Care Centre in your country, turn to your local Philips dealer or contact the Service Department of Philips Domestic Appliances and Personal Care BV..

Troubleshooting

If the appliance does not work or does not work properly, first check the list below. If the problem is not mentioned in this list, the appliance probably has a defect. In that case we advise you to take the appliance to your dealer or to an authorised Philips service centre.

Problem	Causes	Solutions
The appliance does not work.	The appliance has not been charged.	Charge the appliance. When charging for the first time, let the appliance charge continuously for 16 hours. Always put the appliance back onto the charging unit after every use to recharge.

Problem	Causes	Solutions
	The appliance has not been placed properly on the charging unit.	Make sure that the appliance is placed properly on the charging unit. The charging light will go on to indicate that the appliance is charging.
		Push the on/off slide backward to put it in the 'off' position. Make sure the slide is in the 'off' position during charging.
	The contact strips on the appliance and on the charging unit are dirty.	Wipe the dirt off the contact strips with a dry cloth.
	The adapter has not been inserted (properly) into the wall socket.	Insert the adapter into the wall socket (properly).
	If this problem is not caused by any of the factors mentioned above, please contact the Philips Customer Care Centre in your country.	
The appliance does not clean floors/the suction power is low.	The dust compartment is full.	Empty the dust compartment (see chapter 'Cleaning').
	The batteries are not fully charged.	Charge the appliance (see chapter 'Preparing for use').
	The filter is dirty.	Clean the filter and the filter holder (see chapter 'Cleaning').
	The nozzle is clogged.	Remove the obstruction from the nozzle.

Problem	Causes	Solutions
Dust escapes from the appliance.	The filter holder has not been placed properly in the dust compartment.	Reinsert the filter holder (see chapter 'Cleaning').
	The filter holder has not been placed in the dust compartment at all.	Place the filter holder in the dust compartment (see chapter 'Cleaning').
	The filter is not in the correct position.	Fasten the filter in the filter holder by turning it clockwise and put the filter holder into the dust compartment.
	The dust compartment is full.	Empty the dust compartment (see chapter 'Cleaning').
The appliance does not suck up liquid.	The dust compartment is full.	Empty the dust compartment (see chapter 'Cleaning').
Liquid leaks from the appliance.	The filter is wet.	The filter must be dry before you place it back into the appliance.
	The filter has not been installed.	Install the filter before switching the appliance on to suck up liquid.
	The filter holder is not in the correct position.	Place the filter holder in the correct position.
	The maximum amount of liquid has been exceeded.	Empty the dust compartment. Do not let the dust compartment fill up with liquid beyond the maximum indication line.
The surface is still very wet after vacuuming.	The squeegee has not been used.	Always use the squeegee when sucking up liquid.

产品图示 (图一)

- A** 缝隙吸嘴
- B** 毛刷
- C** 橡胶滚子
- D** 过滤器架
- E** 过滤器
- F** 过滤圈
- G** 附件存放槽
- H** 充电装置
- I** 适配器
- J** 积尘盒
- K** 积尘盒释放按钮
- L** 排气口
- M** 充电指示灯(LED)
- N** 开/关滑钮
- O** 接触片

注意事项

使用产品前, 请仔细阅读本使用说明书, 并妥善保管以备日后参考。

- ❶ 如果本产品有任何损坏, 请勿使用。请将其送往经授权的飞利浦顾客服务中心修理。
- ❷ 在将本产品连接电源前, 务必检查当地的电压是否与充电器所标电压一致。
- ❸ 本产品的适配器和充电装置不能更换。如果适配器或充电装置毁坏, 本产品报废。
- ❹ 切勿吸可燃物质或腐蚀性液体, 也不要灰渣冷却之前吸。
- ❺ 切勿在水中浸泡吸尘器或充电装置, 也不要让水进入电动装置或充电装置。
- ❻ 在清洗充电座之前, 务必将插头从墙上的插座上拔掉。

- 只能用本品所提供的充电器和充电座给吸尘器充电。充电期间，如果用手触摸充电器，会感觉温热，这是正常的。
- 抓握产品时不要让积尘盒朝上，吸取液体时不要让产品倾向一边。
- 使用后，务必切断吸尘器的电源。
- 本产品应保存在儿童无法触及之处。
- 充电座接触条上的电压为低电压（最高 12 伏），因此是安全的。
- 在吸尘时，千万不要阻塞排气口。
- 充电前，将本产品的电源关掉。
- 当本电器被用来吸取液体，在存放充电装置中的电器之前倒空和揩干积尘盒。
- 为了避免触电危险，当在墙上钻孔附加充电装置时应小心，尤其是靠近墙上插座时。

使用准备

安装充电座

- 1** 您可以按图把充电装置固定在墙上。(图 2).
如果将充电座固定在墙上，则两螺丝之间的距离应为 70 毫米。
- 2** 也可以将充电座放置在水平表面（如桌面或写字台上）。
(图 3).
- 3** 多余的电线可缠绕在充电座上。(图 4).

充电

使用前第一次充电时，充电时间不得少于 16 小时。

- 1** 将充电器插入墙上的插座。

2 将吸尘器放置在充电座上。(图 5).

- ▶ 充电时，充电指示灯会亮，指示吸尘器正在充电。(图 6).
- ▶ 只要吸尘器与充电座连接，并且充电器插在墙上的插座接通电源，充电灯就会一直亮着。
- ▶ 充电灯不会显示内置电池的充电程度。

使用产品

1 向前推动开关，可接通本产品的电源。(图 7).

2 向后推动开关，可切断本产品的电源。(图 8).

3 将充电器一直插在墙上的插座上接通电源，吸尘器使用完毕，应立即将其放置在充电座上，即使电池仍然充足。

毛刷、缝隙吸嘴和橡胶滚子

本电器带有三个附件：

- 一个用于清洁柔软表面的毛刷咀；
- 缝隙吸嘴用来清洁难以够到的区域；
- 橡胶滚子用来吸取液体。

1 从充电座上取下所需附件。

2 将附件安装在本产品的管咀上。(图 9).

- ▶ 当吸取液体时，将吸嘴以 30° 角度向下握住吸尘器。确信橡胶滚子接触的表面是干净的。请勿把吸尘器倾斜一边。

当积尘盒内液面到达极限标记线时，停止吸取液体。

- ▶ 当积尘盒充满液体时，切勿将开/关滑钮滑下。(图 10).
- ▶ 每次用吸尘器吸取液体时，倒空积尘盒。

3 您可以把所有附件放在充电装置的存放槽中。(图 11).

清洁

清洁充电座之前，务必将充电器从墙上的插座上拔出。

当您用吸尘器来吸液体时，倒空和揩干积尘盒。

- 1 用湿布擦拭本产品。

倒空积尘盒

必须定期倒空积尘盒，并清洁过滤网。

- 1 将本产品拿到垃圾桶的上方，按下积尘盒的拆卸按钮。
(图 12).

- 2 把过滤器架从积尘盒中移除。(图 13).

- 3 用您的另一个手倒空积尘盒。

- 4 清洁过滤器和过滤器架。(图 14).

- ▶ 逆时针旋转把过滤器从过滤器架上拆下。
- ▶ 如果过滤器很脏，用毛刷或普通吸尘器清洁。
- ▶ 如有必要，您可以用冷水或温水清洗过滤器。

- 5 顺时针旋转在过滤器架中拴紧过滤器，并把过滤器架放入积尘盒。确信您正确插入过滤器架。(图 15).

如果过滤器仍然是湿的，切勿使用吸尘器。

更换

- 1 如果过滤器不再能被完全清洁，请更换（通常大约 50 次清洁后）。

- 1 把过滤器架从积尘盒中移除。(图 13).

- 2 逆时针旋转把过滤器从过滤器架上拆下。(图 14).

- 3 逆时针轻轻地旋转把过滤器从过滤器圈中拆下。(图 16).

- 4** 顺时针旋转把新的过滤器固定在过滤圈上。(图 17).
- 5** 把过滤器末端推进。(图 18).
- 6** 顺时针旋转把过滤器在过滤器架中拴紧。把过滤器架放回积尘盒中。(图 19).

附件

可使用 FC8036 型的新过滤器。请联系您的飞利浦经销商。

环保

- 产品的使用寿命完结后，切勿将其与正常的家庭垃圾混在一起，而应将其交给官方指定的收集中心再生利用。这样做有利于环保。(图 20).

节约能源

如果一段时间内不再使用本产品，建议将充电器从墙上的插座拔下，以便节约能源。

电池的处理

镍镉和镍锰电池对环境有污染。而且如果长时间暴露在高温下或明火旁，就有可能爆炸。

电池含有可污染环境的物质。在您丢弃产品时，请将电池取出，或将其送到官方回收点。在官方电池回收点处理电池。

只有当电池彻底没电时，才可将其取出。

按照下列步骤将电池取出。

- 1** 等待本产品运作至停止后，拧下螺丝，然后打开吸尘器。(图 21).
- 2** 剪断电线，然后取出电池。(图 22).

保修与服务

如果您需要详细信息或有任何问题，请浏览飞利浦网站，地址为 www.philips.com。您也可以与贵国的飞利浦客户服务中心联系（您可以从全球保修卡中找到电话号码）。如果贵国没有飞利浦客户服务中心，请与当地的飞利浦经销商或与飞利浦家庭小电器的维修中心联系。

排除故障指南

如果本产品不工作，或工作不正常，首先应按下面的清单查找原因。如果问题没有在清单上列出，则是有故障了。建议将产品送往飞利浦经销商或经授权的飞利浦顾客服务中心处理。

问题	原因	解决办法
本产品不能工作。	本产品还未充电。	为本产品充电。第一次充电时，应连续充电至少 16 小时。每次使用完本产品后，应立即将其放回充电座进行充电。
	本产品没有适当地放在充电座上。	确保本产品正确地放在充电座上。充电指示灯亮，表示本产品正常充电。
		将开关向后推，使其到达 'off' 位置。确保开关在充电期间一直保持在 'off' 位置。
	本产品上的充电接触条和充电座上的接触条脏。	使用干布将污物从接触条上擦除。
	充电器没有（适当地）插入墙上的插座，接通电源。	将充电器（适当地）插入墙上的插座，接通电源。
	如果上述方法还未能解决问题，则请联系您所在国家的飞利浦顾客服务中心。	

问题	原因	解决办法
本产品无法清洁地板/吸力弱。	积尘盒满了。	倒空积尘器（请参阅‘清洗’一章）。
	电池未充满。	给产品充电（见“使用准备”一章）。
	过滤器很脏。	清洁过滤器和过滤器架（见“清洁”一章）。
	管咀阻塞。	从管咀中取出阻塞物。
尘土从本产品中溢出。	过滤器架未正确安装在积尘盒内。	重新插入过滤器架（见“清洁”一章）。
	过滤器架未安装到积尘盒内。	将过滤器架放入积尘盒内（见“清洁”一章）。
	过滤器未安装到位。	顺时针旋转过滤器将其固定在过滤器架中，再将过滤器架放入积尘盒。
	积尘盒满了。	倒空积尘器（请参阅‘清洗’一章）。
产品无法吸取液体。	积尘盒满了。	倒空积尘器（请参阅‘清洗’一章）。
液体从产品中漏出。	过滤器是湿的。	必须待过滤器干燥后再将其装回产品。
	未安装过滤器。	应安装好过滤器后方可打开产品电源吸取液体。
	过滤器架未安装到位。	将过滤器架放入正确的位置。
	超过了液面最高限度。	倒空积尘盒。切勿让积尘盒内的液面超过最高刻度线。
使用本产品吸尘后的表面仍然很湿。	未使用橡胶滚子。	吸取液体时一定要使用橡胶滚子。

PHILIPS



产品：飞利浦充电式吸尘器

型号：FC6055

充电器

充电式吸尘器

额定输入电压：220V_50Hz

额定电压：7.2V d.c

额定输入电流：85mA

功率：70W

额定输出电压：9V d.c

额定输出电流：600mA

生产日期：请见产品底部

产地：中国



/01

珠海经济特区飞利浦家庭电器有限公司

中国珠海市三灶镇琴石工业区

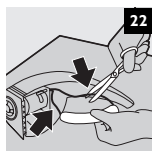
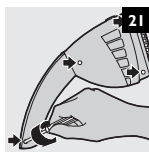
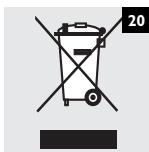
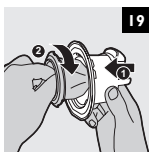
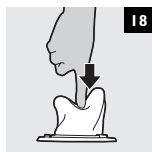
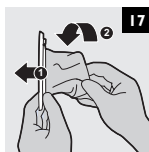
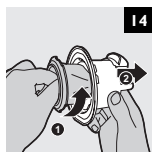
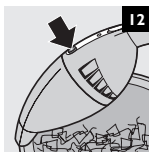
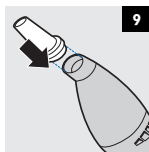
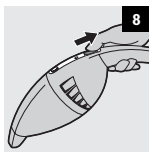
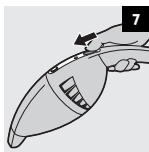
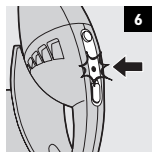
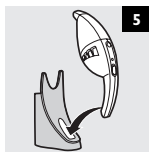
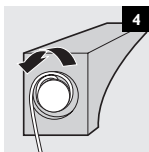
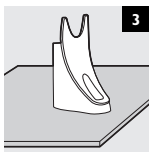
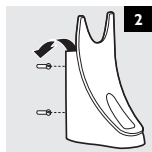
邮政编码：519040 电话：0756-7621898

全国顾客免费服务热线：800 8203 678

本产品根据国标GB4706.1-1998, GB4706.7-1999,
GB4343.1-2003及GB17625.1-2003制造

请妥善保管本使用说明书

发行日期：2006/03/29





www.philips.com



100% recycled paper
100% papier recyclé

4222 003 3322 I