

7228NSM 二层交换机 CLI 用户手册

目 录

目 录.....	2
第一章 前言.....	7
1.1 CONSOLE 管理.....	7
1.2 TELNET 管理.....	9
第二章 general commands.....	11
2.1 enable.....	11
2.1.1 enable help.....	11
2.1.2 clear help.....	14
2.1.3 show help.....	15
2.1.5 set help.....	16
2.1.6 copy config flash.....	17
2.1.7 set enable password.....	18
2.1.8 set password.....	18
2.1.9 reboot.....	18
2.1.10 set default.....	19
2.2 disable.....	19
2.2.1 diable help.....	19
第三章 set commands.....	21
3.1 set port commands.....	21
3.1.1 set port help.....	21
3.1.2 set port enable.....	21
3.1.3 set port disable.....	22
3.1.4 set port duplex.....	22
3.1.5 set port flow-control.....	22
3.1.6 set port speed.....	23
3.1.7 set port storm-limit mode.....	23
3.1.8 set port storm-limit rate.....	24
3.1.9 set port spantree portcost.....	24
3.1.10 set port spantree portpri.....	25
3.1.11 set port spantree portfast.....	25
3.1.12 set port rate-shaping ingress.....	25
3.1.13 set port rate-shaping egress.....	26
3.2 set channel.....	26
3.3 set vlan commands.....	27
3.3.1 set vlan help.....	27
3.3.2 port-based vlan.....	27
3.3.3 802.1Q vlan.....	29
3.4 set snmp commands.....	29
3.4.1 set snmp help.....	29
3.4.2 set snmp disable.....	30
3.4.3 set snmp enable.....	30

3.4.4	set snmp community.....	31
3.4.5	set snmp trap.....	31
3.4.5	set snmp rmon enable.....	31
3.4.6	set snmp rmon disable.....	32
3.5	set spantree commands.....	32
3.5.1	set spantree help.....	32
3.5.2	set spantree enable.....	33
3.5.3	set spantree disable.....	33
3.5.4	set spantree priority.....	33
3.5.5	set spantree hello.....	34
3.5.6	set spantree maxage.....	34
3.5.7	set spantree fwddelay.....	34
3.6	set igmp-snooping commands.....	35
3.6.1	set igmp-snooping help.....	35
3.6.2	set igmp-snooping enable.....	35
3.6.3	set igmp-snooping disable.....	36
3.7	set multicast router.....	36
3.7.1	set multicast router help.....	36
3.7.2	set multicast router.....	36
3.8	set system commands.....	37
3.8.1	set system help.....	37
3.8.2	set system name.....	37
3.8.3	set system contact.....	38
3.8.4	set system location.....	38
3.8.5	set system mac.....	38
3.8.6	set system IP.....	39
3.8.7	set system default-gateway.....	39
3.8.8	set system management-vlan.....	40
3.9	set qos commands.....	40
3.9.1	set qos help.....	40
3.9.2	set qos map cos-queue-map.....	41
3.9.3	set qos map 802.1P-cos-map.....	41
3.9.4	set qos map mac-cos-map.....	42
3.9.5	set qos map port-cos-map.....	42
3.9.6	set qos map vlan-cos-map.....	43
3.9.7	set qos queue egress-policy.....	43
3.10	set security command.....	44
3.10.1	set security help.....	44
3.10.2	set security filter-mac.....	44
3.10.3	set security static-mac.....	45
3.10.4	set security mac-aging.....	45
3.10.5	set security mac-learning.....	45
3.11	set mirror command.....	46
3.11.1	set mirror help.....	46

3.11.2 set mirror disable.....	46
3.11.3 set mirror enable.....	47
3.11.4 set mirror capture-port.....	47
3.11.5 set mirror monitored-port egress.....	47
3.11.6 set mirror monitored-port ingress.....	48
3.12 set ip telnet server.....	48
3.12.1 set ip telnet server disable.....	48
3.12.2 set ip telnet server enable.....	49
3.13 set ip http server.....	49
3.13.1 set ip http server disable.....	49
3.13.2 set ip http server enable.....	49
3.14 set manage ip.....	50
第四章 show commands.....	51
4.1 show port commands.....	51
4.1.1 show port help.....	51
4.1.2 show port state.....	51
4.1.3 show port counters.....	52
4.1.4 show port storm-limit.....	53
4.1.5 show port spantree.....	54
4.1.6 show port rate-shaping.....	55
4.2 show channel.....	56
4.3 show snmp commands.....	57
4.3.1 show vlan.....	57
4.3.2 show vlan type.....	57
4.4 show trunk.....	58
4.5 show snmp commands.....	58
4.5.1 show snmp.....	58
4.5.2 show snmp rmon.....	59
4.6 show spantree.....	59
4.7 show igmp-snooping.....	60
4.8 show multicast router.....	61
4.9 show system.....	61
4.10 show qos commands.....	62
4.10.1 show qos help.....	62
4.10.2 show qos map cos-queue-map.....	62
4.10.3 show qos map dot1p-cos-map.....	63
4.10.4 show qos map mac-cos-map.....	64
4.10.5 show qos map port-cos-map.....	64
4.10.6 show qos map vlan-cos-map.....	65
4.10.7 show qos queue egress-policy.....	65
4.11 show security commands.....	66
4.11.1 show security help.....	66
4.11.2 show security static-mac.....	66
4.11.3 show security filter-mac.....	67

4.11.4 show security mac-aging.....	67
4.11.5 show security mac-learning.....	68
4.12 show mirror.....	68
4.13 show ip http server.....	69
4.14 show ip telnet server.....	69
4.15 show version.....	70
4.16 show console-info.....	70
4.17 show syntax.....	71
第五章 clear commands.....	72
5.1 clear port commands.....	72
5.1.1 clear port help.....	72
5.1.2 clear port counters.....	72
5.1.3 clear port spantree portcost.....	73
5.1.4 clear port spantree portpri.....	73
5.1.5 clear port storm-limit.....	74
5.1.6 clear port rate-shaping.....	74
5.2 clear channel.....	74
5.3 clear vlan.....	75
5.4 clear trunk.....	75
5.5 clear snmp.....	76
5.5.1 clear snmp help.....	76
5.5.2 clear snmp community.....	76
5.5.3 clear snmp trap.....	77
5.6 clear spantree root.....	77
5.7 clear multicast router.....	78
5.8 clear qos commands.....	78
5.8.1 clear qos help.....	78
5.8.2 clear qos map cos-queue-map.....	79
5.8.3 clear qos map dot1p-cos-map.....	79
5.8.4 clear qos map mac-cos-map.....	79
5.8.5 clear qos map vlan-cos-map.....	80
5.9 clear security commands.....	80
5.9.1 clear security help.....	80
5.9.2 clear security static-mac.....	81
5.9.3 clear security filter-mac.....	81
5.10 clear mirror commands.....	81
5.10.1 clear mirror help.....	81
5.10.2 clear mirror monitored-port egress.....	82
5.10.3 clear mirror monitored-port ingress.....	82
5.11 clear manage ip.....	83
第六章 功能键.....	84
CLI 命令索引表.....	84
8.....	84
C.....	84

D.....	84
E.....	84
P.....	85
R.....	85
S.....	85

第一章 前言

1.1 CONSOLE 管理

控制台方式是通过 Microsoft Windows 的超级终端对交换机进行管理和配置。这种方式可以方便地通过 PC 的串行口对设备进行管理，由于该方式不依赖于网络连接，所以当出现链路故障时，通常使用这种方式进行检测。

推荐用户使用 Windows 附带的实用程序【超级终端】来进行控制台配置工作。具体方法是：点击【开始】-【程序】-【附件】-【通讯】-【超级终端】。

第一步：输入新建连接名称，如图所示：



图 1.1

第二步：选择 PC 上连接交换机的串行接口，并设置该串行口的通讯属性（波特率，奇偶校验，数据位，停止位，流控），如图所示：



图 1.2

**温馨提示**

出厂时 7228NSM 二层网管型的 CONSOLE 端口的通讯设置为：波特率 9600，奇偶校验-无，数据位 8 位，停止位 1 位，无流控



图 1.3

**温馨提示**

出厂时 7228NSM 二层网管型交换机的默认 CONSOLE 管理特权密码为“password”。

1.2 TELNET 管理

这种管理方法采用 CLI 方式，操作方式类似于控制台方式(CONSOLE)，不同的是首先要建立远程连接，并通过登录认证。由于采用 TCP/IP 协议，这种方式可以实现远程管理。

用户可以通过 Windows 提供的 TELNET 实用工具来建立远程连接，具体操作：点击 Windows 的菜单导航条“【开始】 - 【运行】”，在【打开】框中输入“telnet 192.168.2.11”并确定。

**温馨提示**

出厂时交换机的 IP 地址:192.168.2.11。

如图所示：

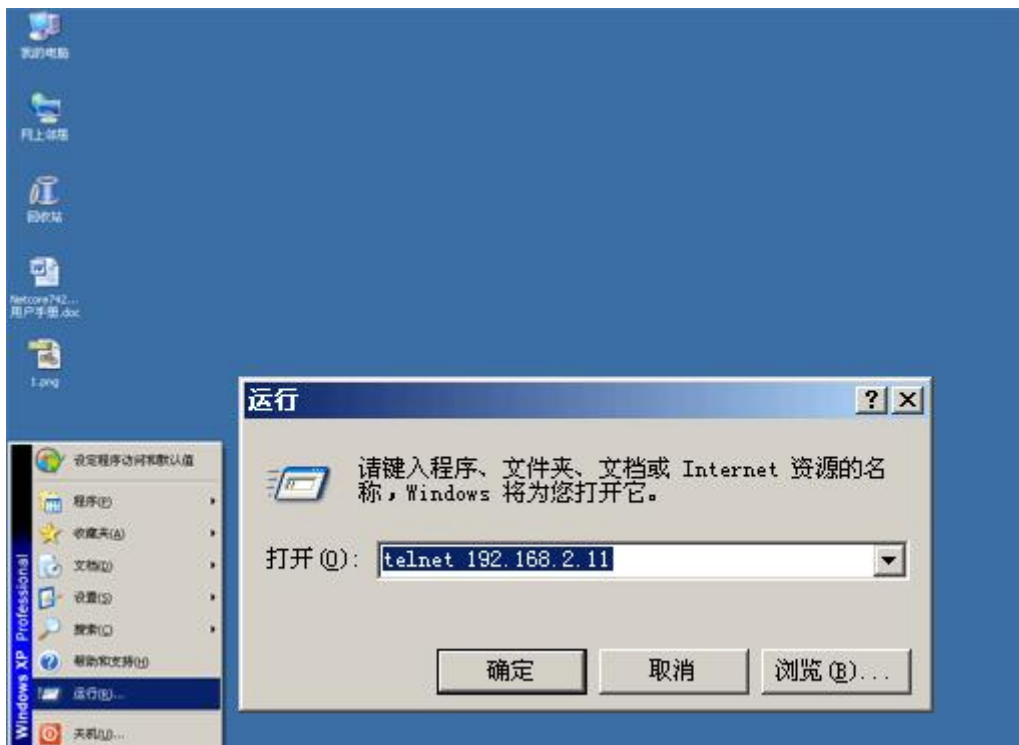


图 1.4

连接成功后，系统要求用户输入用户名和密码登陆交换机的 TELNET 管理页面。如图所示：

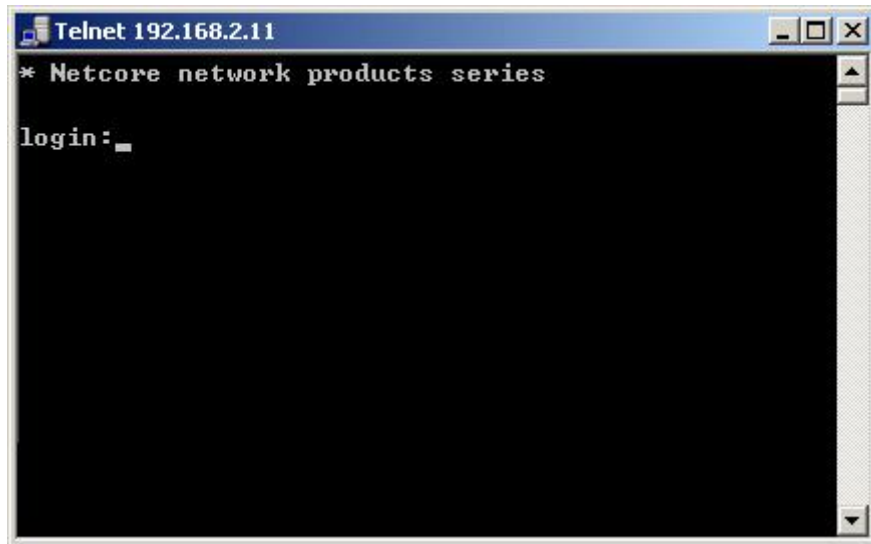


图 1.5

**温馨提示**

出厂时 7228NSM 二层网管型交换机的默认 TELNET 登陆用户名和密码: `guest / guest`, 进入特权模式的配置密码为 “password”。

第二章 general commands

2.1 enable

功能：进入特权管理模式

语法：enable

描述：N/A

缺省参数：N/A

命令模式：Normal

例子：

```
console> enable
```

```
console>(enable)
```

相关命令：[disable](#)

2.1.1 enable help

功能：进入特权模式以后，显示 enable 的帮助信息

语法：help

描述：“help”和“?”功能完全相同

缺省参数：N/A

命令模式：Privileged

例子：console>(enable)help

clear mirror monitored-port egress	Clear egress monitored port for mirror
clear mirror monitored-port ingress	Clear ingress monitored port for mirror
clear multicast router	Clear router port
clear port counters	Clear port statistics counter
clear port rate-shaping	Clear rate-shaping of all ports
clear port spantree portcost	Restore spanning tree port cost to default value
clear port spantree portpri	Restore spanning tree port priority to default value
clear port storm-limit	Clear storm limit of all ports
clear qos map cos-queue-map	Reset cos-queue map to default
clear qos map dot1p-cos-map	Reset dot1p_cos map to default
clear qos map mac-cos-map	Clear qos map mac-cos-map
clear qos map vlan-cos-map	Clear qos map vlan-cos-map
clear security filter-MAC	Clear MAC filter entry
clear security static-MAC	Clear static MAC entry
clear snmp community	Clear snmp community entry
clear snmp trap	Clear snmp trap management host
clear spantree root	Restore spanning tree parameters
clear trunk	Clear trunk port from vlans

clear vlan	Clear member from vlan
copy config flash	Copy system configuration parameters to flash
disable	Disable privileged mode
reboot	Reboot system
set channel	Set ports to be channel
set default	Set system load default parameters
set enable password	Set the password for the privileged level of the CLI
set igmp-snooping disable	Disable igmp snooping
set igmp-snooping enable	Enable igmp snooping
set ip http server disable	Disable http server
set ip http server enable	Enable http server
set ip telnet server disable	Disable telnet server
set ip telnet server enable	Enable telnet server
set mirror	Enable/Disable mirror function
set mirror capture-port	Set a port to capture traffic
set mirror monitored-port egress	Capture egress traffic
set mirror monitored-port ingress	Capture ingress traffic
set multicast router	Set multicst router port
set password	Set the password for telnet
set port disable	Disable a port
set port duplex	Set port transmission type
set port enable	Enable a port
set port flow-control	Set port traffic flowcontrol
set port rate-shaping egress	Set port egress rate-shaping rate
set port rate-shaping ingress	Set port ingress rate-shaping rate
set port spantree <port_num> portco	Set spanning tree port cost
set port spantree <port_num> portfa	Set spanning tree PortFast feature
set port spantree <port_num> portpr	Set spanning tree port priority
set port speed	Set port transmission speed
set port storm-limit mode	Set port storm limit mode
set port storm-limit rate	Set port storm limit rate
set qos map cos-queue-map	Set the queue number of each cos
set qos map dot1p-cos-map	Set the cos value of each dot1p priority
set qos map mac-cos-map	Set MAC based qos
set qos map port-cos-map	Set port's cos
set qos map vlan-cos-map	Set vlan based qos
set qos queue egress-policy	Set the egress policy
set security MAC-aging	Set MAC aging time
set security filter-MAC	Create MAC filter entry
set security mac-learning	Set port learnring MAC (enable disable)
set security static-MAC	Create static MAC entry
set snmp	Enable/Disable snmp agent
set snmp community	Set snmp community string

set snmp trap	Set snmp trap receive host
set spantree disable	Disable spanning tree
set spantree enable	Enable spanning tree
set spantree fwddelay	Set the forward delay for the spanning tree
set spantree hello	Set the hello interval for the spanning tree
set spantree maxage	Set the max age interval for the spanning
set spantree priority	Set the bridge priority for the spanning tree
set system contact	Set system contact
set system default-gateway	Set default gateway
set system ip	Set system ip mask
set system location	Set system location
set system mac	Set system mac address
set system management-vlan	Specify a vlan for system management
set system name	Set system name
set trunk	Set vlan trunk port
set vlan <vid> name	Set vlan name
set vlan <vlan id> <portlist>	Set vlan members
set vlan type port-based	Set system be port-based vlan
set vlan type dot1q-based	Set system be dot1q-based vlan
show channel	Show channel information
show console-info	Show console-info
show igmp-snooping	Show igmp snooping information
show ip http server	Show http server information
show ip telnet server	Show telnet server information
show mirror	Show mirror information
show multicast router	Show multicast router port information
show port counte	Show port counter information
show port rate-shaping	Show port ingress and egress rate-shaping
show port spantree	Show spantree information on ports
show port state	Show port infomation
show port storm-limit	Show port storm limit mode and rate
show qos map cos-queue-map	Show qos map cos-queue-map
show qos map dot1p-cos-map	Show qos map cos-queue-map
show qos map mac-cos-map	Show qos map mac-cos-map
show qos map port-cos-map	Show each port's cos
show qos map vlan-cos-map	Show qos map vlan-cos-map
show qos queue egress-policy	Show qos queue egress-policy
show security MAC-aging	Show MAC aging time
show security filter-MAC	Show MAC filter entry
show security mac-learning	Show port security status
show security static-MAC	Show static mac table information
show snmp	Show snmp information
show snmp rmon	Show snmp rmon state
show spantree	Show spanning tree information

show syntax	Show basic help information
show system	Show system information
show trunk	Show trunk information
show version	Get last software version
show vlan	Show vlan information
show vlan type	Show current vlan type

相关命令：NA

2.1.2 clear help

功能：进入特权模式以后，显示 **clear** 命令的帮助信息

语法：clear help

描述：N/A

缺省参数：N/A

命令模式：Privileged

例子：

console>(enable) clear help	
clear channel	Clear member from channel
clear mirror monitored-port egress	Clear egress monitored port for mirror
clear mirror monitored-port ingress	Clear ingress monitored port for mirror
clear multicast router	Clear router port
clear port counters	Clear port statistics counter
clear port rate-shaping	Clear rate-shaping of all ports
clear port spantree portcost	Restore spanning tree port cost to default value
clear port spantree portpri	Restore spanning tree port priority to default value
clear port storm-limit	Clear storm limit of all ports
clear qos map cos-queue-map	Reset cos-queue map to default
clear qos map dot1p-cos-map	Reset dot1p_cos map to default
clear qos map mac-cos-map	Clear qos map mac-cos-map
clear qos map vlan-cos-map	Clear qos map vlan-cos-map
clear security filter-MAC	Clear MAC filter entry
clear security static-MAC	Clear static MAC entry
clear snmp community	Clear snmp community entry
clear snmp trap	Clear snmp trap management host
clear spantree root	Restore spanning tree parameters
clear trunk	Clear trunk port from vlans
clear vlan	Clear member from vlan

相关命令：NA

2.1.3 show help

功能：进入特权模式以后,显示 show 命令的帮助信息

语法：show help

描述：N/A

缺省参数：N/A

命令模式：Normal

例子：console>(enable) show help

```
show channel                Show channel information
show console-info           Show console-info
show igmp-snooping          Show igmp snooping information
show ip http server          Show http server information
show ip telnet server        Show telnet server information
show mirror                  Show mirror information
show multicast router        Show multicast router port information
show port counter            Show port counter information
show port rate-shaping       Show port ingress and egress rate-shaping
show port spantree           Show spantree information on ports
show port state              Show port information
show port storm-limit        Show port storm limit mode and rate
show qos map cos-queue-map   Show qos map cos-queue-map
show qos map dot1p-cos-map   Show qos map cos-queue-map
show qos map mac-cos-map     Show qos map mac-cos-map
show qos map port-cos-map    Show each port's cos
show qos map vlan-cos-map    Show qos map vlan-cos-map
show qos queue egress-policy Show qos queue egress-policy
show security MAC-aging      Show MAC aging time
show security filter-MAC     Show MAC filter entry
show security mac-learning   Show port security status
show security static-MAC     Show static mac table information
show snmp                    Show snmp information
-----MORE-----
show snmp rmon               Show snmp rmon state
show spantree                 Show spanning tree information
show syntax                   Show basic help information
show system                   Show system information
show trunk                     Show trunk information
show version                   Get last software version
show vlan                     Show vlan information
show vlan type                 Show current vlan type console>(enable)
```

相关命令：NA

2.1.5 set help

功能：进入特权模式以后,显示 set 命令的帮助信息

语法：set help

描述：N/A

缺省参数：N/A

命令模式：Privileged

例子：console>(enable) set help

set channel	Set ports to be channel
set default	Set system load default parameters
set enable password	Set the password for the privileged level of the CLI
set igmp-snooping disable	Disable igmp snooping
set igmp-snooping enable	Enable igmp snooping
set ip http server disable	Disable http server
set ip http server enable	Enable http server
set ip telnet server disable	Disable telnet server
set ip telnet server enable	Enable telnet server
set mirror	Enable/Disable mirror function
set mirror capture-port	Set a port to capture traffic
set mirror monitored-port egress	Capture egress traffic
set mirror monitored-port ingress	Capture ingress traffic
set multicast router	Set multicst router port
set password	Set the password for telnet
set port disable	Disable a port
set port duplex	Set port transmission type
set port enable	Enable a port
set port flow-control	Set port traffic flowcontrol
set port rate-shaping egress	Set port egress rate-shaping rate
set port rate-shaping ingress	Set port ingress rate-shaping rat
-----MORE-----	
set port spantree <port_num> portco	Set spanning tree port cost
set port spantree <port_num> portfa	Set spanning tree PortFast feature
set port spantree <port_num> portpr	Set spanning tree port priority
set port speed	Set port transmission speed
set port storm-limit mode	Set port storm limit mode
set port storm-limit rate	Set port storm limit rate
set qos map cos-queue-map	Set the queue number of each cos
set qos map dot1p-cos-map	Set the cos value of each dot1p priority
set qos map mac-cos-map	Set MAC based qos
set qos map port-cos-map	Set port's cos
set qos map vlan-cos-map	Set vlan based qos

set qos queue egress-policy	Set the egress policy
set security MAC-aging	Set MAC aging time
set security filter-MAC	Create MAC filter entry
set security mac-learning	Set port learning MAC (enable disable)
set security static-MAC	Create static MAC entry
set snmp	Enable/Disable snmp agent
set snmp community	Set snmp community string
set snmp rmon	Enable/Disable rmon state
set snmp trap	Set snmp trap receive host
set spantree disable	Disable spanning tree
set snmp rmon	Enable/Disable rmon state
set snmp trap	Set snmp trap receive host
set spantree disable	Disable spanning tree
set spantree enable	Enable spanning tree
spantree fwddelay	Set the forward delay for the spanning tree
set spantree hell	Set the hello interval for the spanning tree
set spantree maxage	Set the max age interval for the spanning
set spantree priority	Set the bridge priority for the spanning tree
set system contact	Set system contact
set system default-gateway	Set default gateway
set system ip	Set system ip mask
set system location	Set system location
set system mac	Set system mac address
set system management-vlan	Specify a vlan for system management
set system name	Set system name
set trunk	Set vlan trunk port
set vlan <vid> name	Set vlan name
set vlan <vlan id> <portlist>	Set vlan members
set vlan type port-based	Set system be port-based vlan
set vlan type dot1q-based	Set system be dot1q-based vlan

相关命令：NA

2.1.6 copy config flash

功能：进入特权模式以后,保存系统配置参数

语法：copy config flash

描述：N/A

缺省参数：N/A

命令模式：Privileged

例子：

```
console>(enable) copy config flash
console>(enable)
```

相关命令：NA

2.1.7 set enable password

功能：进入特权模式以后,配置进入特权模式的密码

语法：set enable password <old_password> <new_password>

描述：

STR: 旧密码

STR: 新密码

缺省参数：N/A

命令模式：Privileged

例子：

```
console>(enable)set enable password old_password new_password
console>(enable)
```

相关命令：NA

2.1.8 set password

功能：修改 Telnet 登陆的密码

语法：set password STR STR

描述：

STR: Telnet 的用户名

STR: 新密码

缺省参数：Telnet 的登陆缺省密码为“guest”

命令模式：Privileged

例子：

```
console>(enable) set password ?
set password <user_name> <new_pass>
console>(enable) set password guest test
console>(enable)
```

相关命令：NA

2.1.9 reboot

功能：进入特权模式以后,重新启动

语法：reboot

描述：N/A

缺省参数：N/A

命令模式：Privileged

例子：

```
console>(enable) reboot
```

相关命令：NA

2.1.10 set default

功能：恢复系统缺省参数

语法：set default

描述：恢复系统缺省参数

缺省参数：N/A

命令模式：Privileged

例子：

```
console>(enable) set default
```

Reboot your system,It will bring parameter into effect.

```
console>(enable)
```

相关命令：NA

2.2 disable

功能：退出特权管理模式

语法：disable

描述：N/A

缺省参数：N/A

命令模式：Privileged

例子：

```
console>(enable) disable
```

```
console>
```

相关命令：enable

2.2.1 diable help

功能：退出特权管理模式后，显示 disable 的帮助信息

语法：help

描述：“help”和“?”功能完全相同

缺省参数：NA

命令模式：Privileged

例子：

```
console>help
```

```
enable
```

Enable privileged mode

```
show channel
```

Show channel information

```
show console-info
```

Show console-info

```
show igmp-snooping
```

Show igmp snooping information

```
show ip http server
```

Show http server information

```
show ip telnet server
```

Show telnet server information

```
show mirror
```

Show mirror information

```
show multicast router
```

Show multicast router port information

show port counter	Show port counter information
show port rate-shaping	Show port ingress and egress rate-shaping
show port spantree	Show spantree information on ports
show port state	Show port information
show port storm-limit	Show port storm limit mode and rate
show qos map cos-queue-map	Show qos map cos-queue-map
show qos map dot1p-cos-map	Show qos map cos-queue-map
show qos map mac-cos-map	Show qos map mac-cos-map
show qos map port-cos-map	Show each port's cos
show qos map vlan-cos-map	Show qos map vlan-cos-map
show qos queue egress-policy	Show qos queue egress-policy
show security MAC-aging	Show MAC aging time
show security filter-MAC	Show MAC filter entry
show security mac-learning	Show port security status
show security static-MAC	Show static mac table information
show snmp	Show snmp information
show snmp rmon	Show snmp rmon state
show spantree	Show spanning tree information
show syntax	Show basic help information
show system	Show system information
show trunk	Show trunk information
show versio	Get last software version
show vlan	Show vlan information
show vlan type	Show current vlan type

相关命令：N/A

第三章 set commands

3.1 set port commands

3.1.1 set port help

功能：显示 set port 帮助信息

语法：set port help

描述：“set port help”和“set port ?”功能完全相同

缺省参数：N/A

命令模式：Privileged

例子：

console>(enable) set port ?	
set port disable	Disable a port
set port duplex	Set port transmission type
set port enable	Enable a port
set port flow-control	Set port traffic flowcontrol
set port rate-shaping egress	Set port egress rate-shaping rate
set port rate-shaping ingress	Set port ingress rate-shaping rate
set port spantree <port_num> portco	Set spanning tree port cost
set port spantree <port_num> portfa	Set spanning tree PortFast feature
set port spantree <port_num> portpr	Set spanning tree port priority
set port speed	Set port transmission speed
set port storm-limit mode	Set port storm limit mode
set port storm-limit rate	Set port storm limit rate

3.1.2 set port enable

功能：配置端口的管理状态，启用端口

语法：set port enable INT

描述：INT：端口号，<port_num>

缺省参数：所有端口都为“enable”

命令模式：Privileged

例子：将 3 号端口的端口管理状态设置为“enable”。

```

console>(enable) set port enable?
Usage:set port enable <port_num>
Paras:port_num(1-40)
console>(enable)set port enable 3
console>(enable)

```

相关命令：配置完成后输入命令 show port state 查看所有端口状态

3.1.3 set port disable

功能：配置端口的管理状态，关闭端口

语法：set port disable INT

描述：INT：端口号，<port_num>

缺省参数：所有端口都为“enable”

命令模式：Privileged

例子：

```
console>(enable) set port disable ?
```

```
Usage:set port disable <port_num>
```

```
Paras:port_num(1-40)
```

```
console>(enable) set port disable 3
```

```
console>(enable)
```

相关命令：配置完成后输入命令 show port state 查看所有端口状态

3.1.4 set port duplex

功能：配置端口的双工

语法：set port duplex INT [auto|full|half]

描述：

INT：端口号，<port_num>

auto：配置端口的双工模式为自动协商

full：配置端口的双工模式为全双工

half：配置端口的双工模式为半双工

缺省参数：所有端口的双工模式为“auto”

命令模式：Privileged

例子：将 3 号端口的双工设为自动协商

```
console>(enable) set port duplex ?
```

```
Usage:set port duplex <port_num> [auto|full|half]
```

```
Paras:port_num(1-40)
```

```
console>(enable) set port duplex 3 auto
```

```
console>(enable)
```

相关命令：配置完成后输入命令 show port state 查看所有端口状态

3.1.5 set port flow-control

功能：配置端口的流量控制功能，关闭 / 启用流量控制功能

语法：set port flow-control INT [disable|enable]

描述：

INT：端口号，<port_num>

disable：关闭端口的流量控制功能

enable：启用端口的流量控制功能

缺省参数：所有端口的流量控制功能为“enable”

命令模式：Privileged

例子：将 3 号端口的流量控制关闭

```
console>(enable) set port flow-control ?
Usage:set port flow-control <port_num> [disable|enable]
Paras:port_num(1-40)
console>(enable) set port flow-control 3 disable
console>(enable)
```

相关命令：配置完成后输入命令 show port state 查看所有端口状态

3.1.6 set port speed

功能：配置端口的速度

语法：set port speed INT [auto|10|100|1000]

描述：

- INT：端口号，<port_num>
- auto：配置端口的速度为自动协商
- 10：配置端口的速度为 10Mbps
- 100：配置端口的速度为 100Mbps
- 1000：配置端口的速度为 1000Mbps

缺省参数：所有端口的速度为“auto”

命令模式：Privileged

```
例子：将 3 号端口的速度配置为自动协商
console>(enable) set port speed ?
Usage:set port speed <port_num> [auto|10|100|1000]
Paras:port_num(1-40)
console>(enable) set port speed 3 auto
console>(enable)
```

相关命令：配置完成后输入命令 show port state 查看所有端口状态

3.1.7 set port storm-limit mode

功能：配置端口风暴抑制类型

语法：set port storm-limit mode INT [Unknow MultiBroad|MultiBroad|Broad]

描述：

- NT：端口号，<port_num>
- UnknowMultiBroad：泛宏、组播、广播包
- MultiBroad：组播、广播包
- Broad：广播包

缺省参数：风暴抑制关闭

命令模式：Privileged

```
例子：将 3 号端口设置成限制广播包
```

```
console>(enable) set port storm-limit mode ?
Usage:set port storm-limit mode <port_num> [UnknowMultiBroad|MultiBroad|Broad]
Paras:port_num(1-40)
console>(enable) set port storm-limit mode 3 Broad
console>(enable)
```

相关命令：配置完成后输入命令 Show port storm-limit 查看所有端口风暴抑制状态

3.1.8 set port storm-limit rate

功能：配置端口风暴抑制范围

语法：set port storm-limit rate INT <rate>

描述：

INT：端口号，<port_num>

Rate:限制范围（64-80000）Kbps

缺省参数：缺省范围为 0

命令模式：Privileged

```
例子：将 3 号端口设置成限制广播包流量 64Kbps
console>(enable) set port storm-limit rate?
Usage:set port storm-limit rate <port_num> <rate>
Paras:port_num(1-40) rate (64-80000)
console>(enable) set port storm-limit rate 3 64
console>(enable)
```

相关命令：配置完成后输入命令 Show port storm-limit 查看所有端口风暴抑制状态

3.1.9 set port spantree portcost

功能：配置端口的生成树通路成本

语法：set port spantree INT portcost [<num>|auto]

描述：

INT：端口号，<port_num>

auto：通路成本根据链路实际情况算出

num：通路成本的值，范围：1-65535

缺省参数：所有端口的通路成本为“auto”

命令模式：Privileged

```
例子：将 3 号端口的生成树通路成本设置为 128
console>(enable) set port spantree 3 portcost ?
Usage:set port spantree <port_num> portcost [<num>|auto]
Paras:port_num(1-40),num(1-65535)
console>(enable) set port spantree 3 portcost 128
console>(enable)
```

相关命令：配置完成后输入命令 show port spantree 查看所有端口生成树配置信息

3.1.10 set port spantree portpri

功能：配置端口的生成树优先级

语法：set port spantree INT portpri <pri_value>

描述：

INT：端口号，<port_num>

<pri_value>：端口优先级的值，范围：0-255

缺省参数：所有端口的优先级为“128”

命令模式：Privileged

例子：将 3 号端口的生成树优先级配置为 128

```
console>(enable) set port spantree 3 portpri ?
Usage:set port spantree <port_num> portpri <pri_value>
Paras:port_num:(1-40),portpri INT(0-255)
console>(enable) set port spantree 3 portpri 128
console>(enable)
```

相关命令：配置完成后输入命令 show port spantree 查看所有端口生成树配置信息

3.1.11 set port spantree portfast

功能：配置生成树的快速端口状态

语法：set port spantree INT portfast [disable|enable]

描述：

INT：端口号，<port_num> 范围 1-28

disable：生成树的快速端口状态为“disable”

enable：生成树的快速端口状态为“enable”

缺省参数：所有生成树的快速端口状态为“disable”

命令模式：Privileged

例子：

```
console>(enable) set port spantree 3 portfa ?
Usage:set port spantree <port_num> portfast [disable|enable]
Paras:port_num(1-28)
console>(enable) set port spantree 3 portfast enable
console>(enable)
```

相关命令：配置完成后输入命令 show port rate-shaping 查看所有端口带宽限制

3.1.12 set port rate-shaping ingress

功能：配置端口入口带宽限制

语法：set port ingress rate-shaping INT <rate>

描述：

INT：端口号，<port_num> 范围 1-28

Rate：带宽限制范围（64-80000）Kbps

缺省参数：缺省设置为 0

命令模式：Privileged

```
例子：将 3 号端口的入口带宽限制为 64Kpbs
console>(enable) set port rate-shaping ingress?
Usage:set port egress rate-shaping <port_num> <rate>
Paras:port_num(1-28) rate (64-80000)
console>(enable) set port ingress rate-shaping 3 64
console>(enable)
```

相关命令：配置完成后输入命令 show port rate-shaping 查看所有端口带宽限制

3.1.13 set port rate-shaping egress

功能：配置端口出口带宽限制

语法：set port egress rate-shaping INT <rate>

描述：

INT：端口号，<port_num> 范围 1-28

Rate：带宽限制范围（64-80000）Kbps

缺省参数：缺省设置为 0

命令模式：Privileged

```
例子：将 3 号端口的出口带宽限制为 64Kpbs
console>(enable) set port rate-shaping egress?
Usage:set port egress rate-shaping <port_num> <rate>
Paras:port_num(1-28) rate (64-80000)
console>(enable) set port egress rate-shaping 3 64
console>(enable)
```

相关命令：配置完成后输入命令 show port spantree 查看所有端口生成树配置信息

3.2 set channel

功能：配置聚合组的成员

语法：set channel <channel_num> <port_list>

描述：

<channel_num>：聚合组号。最大允许配置 12 组聚合组

<port_list>：聚合组的成员，端口列表，最大允许加入 8 个端口

```
例如：1-20、1-7、9、1-2、5-9
```

缺省参数：N/A

命令模式：Privileged

```
例子：将 2 号端口和 3 号端口设为聚合组 1
console>(enable) set channel ?
Usage:set channel <channel_num> <port_list>
Paras:channel_num(1-12),port_list(1-28)
Warning:one channel can not set more than 8 ports to it
```

```
console>(enable) set channel 1 2-3
console>(enable)
```

相关命令：配置完成后输入命令 `show channel` 已经配置的聚合组；配置完成后输入命令 `clear channel` 将某端口从聚合组中删除

3.3 set vlan commands

3.3.1 set vlan help

功能：显示 `set vlan` 帮助信息

语法：`set vlan help`

描述：“`set vlan help`”和“`set vlan ?`”功能完全相同

缺省参数：N/A

命令模式：Privileged

例子：

```
console>(enable) set vlan ?
set vlan <vid> name           Set vlan name
set vlan <vlan id> <portlist> Set vlan members
set vlan type port-based      Set system be port-based vlan
set vlan type dot1q-based     Set system be dot1q-based vlan
console>(enable)
```

相关命令：输入命令 `show vlan` 查看 VLAN 配置信息

3.3.2 port-based vlan

功能：选中配置 `port-based vlan`

语法：`set vlan type port-based`

描述：N/A

缺省参数：N/A

命令模式：Privileged

```
例子： console>(enable) set vlan ?
set vlan <vid> name           Set vlan name
set vlan <vlan id> <portlist> Set vlan members
set vlan type port-based      Set system be port-based vlan
set vlan type dot1q-based     Set system be dot1q-based vlan
console>(enable)set vlan type port-based
console>(enable)
```

相关命令：输入命令 `show vlan` 查看 VLAN 配置信息

3.3.2.1 set vlan name

功能：配置 vlan 的名称

语法：set vlan INT name STR

描述：

INT: vlan 的 id

STR: vlan 的名称

缺省参数：N/A

命令模式：Privileged

例子：设置一个 VID=2 名称为 test 的 port-based vlan

```
console>(enable) set vlan ?
set vlan <vid> name           Set vlan name
set vlan <vlan id> <portlist> Set vlan members
set vlan type port-based      Set system be port-based vlan
set vlan type dot1q-based     Set system be dot1q-based
vlanconsole>(enable)
console>(enable) set vlan 2 ?
set vlan <vid> name           Set vlan name
set vlan <vlan id> <portlist> Set vlan members
console>(enable) set vlan 2 name ?
Usage:set vlan <vid> name <string>
Paras:vid(1-4094)
console>(enable) set vlan 2 name test
console>(enable)
```

相关命令：配置完成后输入命令 show vlan 查看 VLAN 配置信息

3.3.2.2 set vlan

功能：配置 port-based vlan 成员

语法：set vlan INT INTLIST

描述：

INT: vlan 的 vid, <vid>

INTLIST: 端口列表, 例如: 1-2、1-2, 4、1-2, 4-5

缺省参数：N/A

命令模式：Privileged

例子：将 1-4 号端口加入 VID=2 的 VLAN

```
console>(enable) set vlan ?
set vlan <vid> name           Set vlan name
set vlan <vlan id> <portlist> Set vlan members
set vlan type port-based      Set system be port-based vlan
set vlan type dot1q-based     Set system be dot1q-based
vlanconsole>(enable)
```

```

console>(enable) set vlan 2 ?
set vlan <vid> name          Set vlan name
set vlan <vlan id> <portlist> Set vlan members
console>(enable) set vlan 2 2 ?
Usage:set vlan
Paras:vlan id(1-4094),portlist(1-40)
console>(enable) set vlan 2 1-4
console>(enable)

```

相关命令：配置完成后输入命令 `show vlan` 查看 VLAN 配置信息；配置完成后输入命令 `clear vlan` 对 VLAN 配置进行修改

3.3.3 802.1Q vlan

设置 VLAN 名称和设置 VLAN 成员的命令操作与 `port-based vlan` 设置相同

3.3.3.1 set trunk

功能：配置 802.1q vlan 的 trunk 端口

语法：`set trunk INT [INTLIST]`

描述：

INT：端口号，<port_num>

INTLIST：vlan 列表，例如：1-2、1-2, 4、1-2, 4-5

缺省参数：N/A

命令模式：Privileged

例子：

```

console>(enable) set trunk ?
Usage:set trunk <port_num> [<vlan_list>]
Paras:port_num(1-40),vlan_list(1-4094)
console>(enable) set trunk 1 2-4
console>(enable)

```

相关命令：配置完成后输入命令 `show trunk` 查看 VLAN Trunk 配置信息；配置完成后输入命令 `clear trunk` 对 VLAN Trunk 配置进行修改

3.4 set snmp commands

3.4.1 set snmp help

功能：显示 `set snmp` 帮助信息

语法：`set snmp help`

描述：“`set snmp help`”和“`set snmp ?`”功能完全相同

缺省参数：N/A

命令模式: Privileged

例子: console>(enable) set snmp ?

set snmp	Enable/Disable snmp agent
set snmp community	Set snmp community string
set snmp rmon	Enable/Disable rmon state
set snmp trap	Set snmp trap receive host

console>(enable)

相关命令:

set snmp community
set snmp disable
set snmp enable
set snmp rmon disable
set snmp rmon enable
set snmp trap

3.4.2 set snmp disable

功能: 关闭 snmp agent

语法: set snmp disable

描述: disable: 关闭 snmp agent

缺省参数: snmp agent 的状态为“disable”

命令模式: Privileged

例子:

```
console>(enable) set snmp disable
console>(enable)
```

相关命令: 配置完成后输入命令 show snmp 查看 snmp 配置信息

3.4.3 set snmp enable

功能: 打开 snmp agent

语法: set snmp enable

描述:

enable: 打开 snmp agent

缺省参数: snmp agent 的状态为“disable”

命令模式: Privileged

例子:

```
console>(enable) set snmp enable
console>(enable)
```

相关命令: 配置完成后输入命令 show snmp 查看 snmp 配置信息

3.4.4 set snmp community

功能：配置 SNMP 的 community

语法：set snmp community STR [read-only|write]

描述：

STR：SNMP 的 community

read-only：SNMP 的 community 具有只读权限

write：SNMP 的 community 具有读写权限

缺省参数：public：具有只读权限

命令模式：Privileged

例子：设置团体名称为“7228NSM”并且团体属性为 write

```
console>(enable) set snmp community ?
```

```
Usage:set snmp community <community_string> [read-only|write]
```

```
console>(enable) set snmp community 7228NSMwrite
```

```
console>(enable)
```

相关命令：配置完成后输入命令 show snmp 查看 snmp 配置信息；配置完成后输入命令 clear snmp community 修改 snmp 配置信息

3.4.5 set snmp trap

功能：配置接收 snmp trap 的主机和 trap community

语法：set snmp trap IP STR

描述：

IP：配置接收 SNMP trap 的主机 IP 地址

STR：配置 trap community

缺省参数：N/A

命令模式：Privileged

例子：配置 IP 地址为 192.168.2.168 的主机接收团体名为“7228NSM”的 snmp trap 信息

```
console>(enable) set snmp trap ?
```

```
Usage:set snmp trap <ip_addr> <string>
```

```
console>(enable) set snmp trap 192.168.2.168 7228NSM
```

```
console>(enable)
```

相关命令：配置完成后输入命令 show snmp 查看 snmp 配置信息；配置完成后输入命令 clear snmp trap 修改 snmp 配置信息

3.4.5 set snmp rmon enable

功能：打开 snmp rmon

语法：set snmp rmon enable

描述：

enable：打开 snmp rmon

缺省参数: snmp agent 的状态为“disable”

命令模式: Privileged

例子:

```
console>(enable) set snmp rmon enable
console>(enable)
```

相关命令: 输入命令 show snmp rmon 查看详细信息

3.4.6 set snmp rmon disable

功能: 关闭 snmp rmon

语法: set snmp rmon disable

描述:

enable: 打开 snmp agent

缺省参数: snmp agent 的状态为“disable”

命令模式: Privileged

例子:

```
console>(enable) set snmp rmon disable
console>(enable)
```

相关命令: 输入命令 show snmp rmon 查看详细信息

3.5 set spantree commands

3.5.1 set spantree help

功能: 显示 set spanning tree 的帮助信息

语法: set spantree help

描述: “set spanning-tree help”和“set spanning-tree ?”功能完全一样

缺省参数: N/A

命令模式: Privileged

例子:

```
console>(enable) set spantree ?
set spantree disable          Disable spanning tree
set spantree enable          Enable spanning tree
set spantree fwddelay        Set the forward delay for the spanning tree
set spantree hello           Set the hello interval for the spanning tree
set spantree maxage          Set the max age interval for the spanning
set spantree priority        Set the bridge priority for the spanningtree
```

相关命令:

set spantree disable

set spantree enable

set spantree fwddelay

set spantree hello

set spantree maxage

set spantree priority

3.5.2 set spantree enable

功能：启用 spanning tree

语法：set spantree enable

描述：enable：启用 spanning tree

命令模式：Privileged

例子：

```
console>(enable) set spantree enable
```

```
console>(enable)
```

相关命令：输入命令 show spantree 查看生成树详细信息

3.5.3 set spantree disable

功能：关闭 spanning tree

语法：set spantree disable

描述：disable：关闭 spanning tree

命令模式：Privileged

例子：

```
console>(enable) set spantree disable
```

```
console>(enable)
```

相关命令：输入命令 show spantree 查看生成树详细信息

3.5.4 set spantree priority

功能：配置 spanning tree priority

语法：set spantree priority INT

描述：

INT：spanning tree priority 的值，0-65535

缺省参数：spanning tree priority 为“32768”

命令模式：Privileged

例子：将生成树优先级设置为 10

```
console>(enable) set spantree priority ?
```

```
Usage:set spantree priority <num>
```

```
Paras:num(0-65535)
```

```
console>(enable) set spantree priority 10
```

```
console>(enable)
```

相关命令：输入命令 show spantree 查看生成树详细信息

3.5.5 set spantree hello

功能：配置 spanning tree hello time

语法：set spantree hello INT

描述：

INT：set spanning-tree hello-time 的值，1-10

缺省参数：spanning tree hello-time 为“2”

命令模式：Privileged

例子：将生成树的 hellotime 设置为 3s

```
console>(enable) set spantree hello ?
```

Usage:set spantree hello <num>

Paras:num(1-10)

```
console>(enable) set spantree hello 3
```

```
console>(enable)
```

相关命令：输入命令 show spantree 查看生成树详细信息

3.5.6 set spantree maxage

功能：配置 spanning tree max age

语法：set spanning-tree maxage INT

描述：INT：set spanning-tree max-age 的值，6-40

缺省参数：spanning tree max-age 为“20”

命令模式：Privileged

例子：将生成树的 maxage 设置为 30s

```
console>(enable) set spantree maxage ?
```

Usage:set spantree maxage <num>

Paras:num(6-40)

```
console>(enable) set spantree maxage 30
```

```
console>(enable)
```

相关命令：输入命令 show spantree 查看生成树详细信息

3.5.7 set spantree fwddelay

功能：配置 spanning tree forward delay

语法：set spanning-tree fwddelay INT

描述：

INT：set spanning tree forward delay 的值，4-30

缺省参数：spanning tree forward delay 为“15”

命令模式：

Privileged

例子：将生成树的 forward delay 设置为 16

```
console>(enable) set spantree fwddelay ?
```

```
Usage:set spantree fwddelay <num>
Paras:num(4-30)
console>(enable) set spantree fwddelay 16
console>(enable)
```

相关命令：输入命令 show spantree 查看生成树详细信息

3.6 set igmp-snooping commands

3.6.1 set igmp-snooping help

功能：显示 set igmp snooping 的帮助信息

语法：set igmp-snooping help

描述：“set igmp snooping help”和“set igmp-snooping ?”功能完全一样

缺省参数：N/A

命令模式：Privileged

例子：

```
console>(enable) set igmp-snooping ?
Usage:set igmp-snooping [disable|enable]
console>(enable)
```

相关命令：

set igmp-snooping disable

set igmp-snooping enable

3.6.2 set igmp-snooping enable

功能：启用 igmp snooping

语法：set igmp-snooping enable

描述：

enable: 打开 igmp snooping

缺省参数：igmp snooping 为“disable”

命令模式：Privileged

例子：

```
console>(enable) set igmp-snooping ?
Usage:set igmp-snooping [disable|enable]
console>(enable) set igmp-snooping enable
console>(enable)
```

相关命令：

输入命令 show igmp-snooping 查看 IGMP 状态

3.6.3 set igmp-snooping disable

功能：关闭 igmp snooping

语法：set igmp-snooping disable

描述：disable：关闭 igmp snooping

缺省参数：igmp snooping 为“disable”

命令模式：Privileged

例子：

```
console>(enable) set igmp-snooping ?
```

```
Usage:set igmp-snooping [disable|enable]
```

```
console>(enable) set igmp-snooping enable
```

```
console>(enable)
```

相关命令：输入命令 show igmp-snooping 查看 IGMP 状态

3.7 set multicast router

3.7.1 set multicast router help

功能：显示 set multicast router 的帮助信息

语法：set multicast router help

描述：“set igmp multicast router help”和“set multicast router ?”功能完全一样

缺省参数：N/A

命令模式：Privileged

例子：

```
console>(enable) set multicast router ?
```

```
Usage:set multicast router <port_list> <vid>
```

```
Paras:port_list(1-40),vid(0-4094) ,0 is all
```

```
console>(enable)
```

相关命令：

show multicast router

3.7.2 set multicast router

功能：配置连接路由器端口

语法：set multicast router INTLIST INT

描述：

INTLIST：端口列表，例如：1-2、1-2、4、1-2、4-5

INT：vlan 的 vid，范围：0-4094，0 表示所有 vlan

缺省参数：N/A

命令模式：Privileged

例子:

```
console>(enable) set multicast router ?
Usage:set multicast router <port_list> <vid>
Paras:port_list(1-40),vid(0-4094) ,0 is all
console>(enable) set multicast router 8 1-4
console>(enable)
```

相关命令: 输入命令 show multicast router 查看; 输入命令 clear multicast port 修改

3.8 set system commands

3.8.1 set system help

功能: 显示 set system 的帮助信息

语法: set system help

描述: “set system help”和“set system ?”功能完全一样

缺省参数: N/A

命令模式: Privileged

例子:

```
console>(enable) set system ?
set system contact           Set system contact
set system default-gateway   Set default gateway
set system ip                 Set system ip mask
set system location           Set system location
set system mac                Set system mac address
set system management-vlan   Specify a vlan for system management
set system name               Set system name
```

相关命令:

```
set system contact
set system default-gateway
set system ip
set system location
set system mac
set system management-vlan
set system name
```

3.8.2 set system name

功能: 配置 system name

语法: set system name STR

描述:

STR: system name

缺省参数: N/A

命令模式: Privileged

```
例子: 将交换机命名为“7228NSM”
console>(enable) set system name ?
Usage: set system name <system_name>
console>(enable) set system name 7228NSM
console>(enable)
```

相关命令: 输入命令 show system 查看系统信息

3.8.3 set system contact

功能: 配置 system contact

语法: set system contact STR

描述:

STR: system contact

缺省参数: N/A

命令模式: Privileged

```
例子:
console>(enable) set system contact ?
Usage: set system contact <contact_string>
console>(enable) set system contact 7228NSM_system
console>(enable)
```

相关命令:

输入命令 show system 查看系统信息

3.8.4 set system location

功能: 配置 system location

语法: set system location STR

描述:

STR: system location

缺省参数: N/A

命令模式: Privileged

```
例子:
console>(enable) set system location ?
Usage: set system location <location_string>
console>(enable) set system location shenzhen
console>(enable)
```

相关命令: 输入命令 show system 查看系统信息

3.8.5 set system mac

功能: 配置 system mac address

语法: set system mac MAC

描述: MAC: system mac address, AAAA.BBBB.CCCC

缺省参数: N/A

命令模式: Privileged

例子: 将交换机的 MAC 地址配置为 00e0 4c49 363f

```
console>(enable) set system mac ?
```

```
Usage:set system mac <MAC>
```

```
console>(enable) set system mac 00e0.4c49.363f
```

```
console>(enable)
```

相关命令:

输入命令 show system 查看系统信息

3.8.6 set system IP

功能: 配置 system IP 地址

语法: set system ip <IP> <MASK>

描述:

<IP>: 交换机 IP 地址 xxx.xxxx.xxxx.xxxx

<MASK>: 子网掩码 xxx.xxxx.xxxx.xxxx

缺省参数: 交换机出厂默认 IP 地址: 192.168.2.11

命令模式: Privileged

例子: 将交换机的 IP 地址配置为 192.168.2.12

```
console>(enable) set system ip ?
```

```
Usage: Usage:set system ip <IP> <MASK>
```

```
console>(enable) set system 192.168.2.12 255.255.255.0
```

```
console>(enable)
```

相关命令: 输入命令 show system 查看系统信息

3.8.7 set system default-gateway

功能: 配置 system 缺省网关

语法: set system default-gateway <IP>

描述:

<IP>: 默认网关 IP 地址 xxx.xxxx.xxxx.xxxx

缺省参数: 交换机出厂默认 IP 地址: 192.168.2.1

命令模式: Privileged

例子: 将交换机缺省网关设置为 192.168.3.1

```
console>(enable) set system default-gateway?
```

```
Usage: Usage:set system default-gateway <IP>
```

```
console>(enable) set system 192.168.3.1 255.255.255.0
```

```
console>(enable)
```

相关命令: 输入命令 show system 查看系统信息

3.8.8 set system management-vlan

功能：配置 system 管理 VLAN

语法：set system management-vlan INT

描述：

INT: vlan 的 vid, <vid>

缺省参数：缺省 management-vlan 是 vlan1

命令模式：Privileged

例子：

```
console>(enable) set system management-vlan?
```

```
Usage:set system management-vlan <vid>
```

```
Paras:vid(1-4094)
```

```
console>(enable)
```

相关命令：输入命令 show system 查看系统信息

3.9 set qos commands

3.9.1 set qos help

功能：显示 set qos 的帮助信息

语法：set qos help

描述：“set qos help”和“set qos ?”功能完全一样

缺省参数：N/A

命令模式：Privileged

例子：

```
console>(enable) set qos ?
```

```
set qos map cos-queue-map
```

Set the queue number of each cos

```
set qos map dot1p-cos-map
```

Set the cos value of each dot1p priority

```
set qos map mac-cos-map
```

Set MAC based qos

```
set qos map port-cos-map
```

Set port's cos

```
set qos map vlan-cos-map
```

Set vlan based qos

```
set qos queue egress-policy
```

Set the egress policy

```
console>(enable)
```

相关命令：

```
set qos map cos-queue-map
```

```
set qos map dot1p-cos-map
```

```
set qos map mac-cos-map
```

```
set qos map port-cos-map
```

```
set qos map vlan-cos-map
```

```
set qos queue egress-policy
```


3.9.2 set qos map cos-queue-map

功能：配置 CoS-Queue 的映射关系

语法：set qos map cos-queue-map INT INT INT INT INT INT INT INT

描述：

INT: CoS 为 0 时映射的 Queue 值

INT: CoS 为 1 时映射的 Queue 值

INT: CoS 为 2 时映射的 Queue 值

INT: CoS 为 3 时映射的 Queue 值

INT: CoS 为 4 时映射的 Queue 值

INT: CoS 为 5 时映射的 Queue 值

INT: CoS 为 6 时映射的 Queue 值

INT: CoS 为 7 时映射的 Queue 值

缺省参数：

CoS 为 0 时映射的 Queue 值为 0

CoS 为 1 时映射的 Queue 值为 0

CoS 为 2 时映射的 Queue 值为 1

CoS 为 3 时映射的 Queue 值为 1

CoS 为 4 时映射的 Queue 值为 2

CoS 为 5 时映射的 Queue 值为 2

CoS 为 6 时映射的 Queue 值为 3

CoS 为 7 时映射的 Queue 值为 3

命令模式：Privileged

例子：设置 cos 为 2 时映射的 Queue 值为 3

```
console>(enable) set qos map cos-queue-map ?
```

```
Usage:set qos map cos-queue-map <queue_cos0><queue_cos1>...<queue_cos7>
```

```
Paras:the queue number is 0-3
```

```
console>(enable) set qos map cos-queue-map 0 0 3 1 2 2 3 3
```

```
console>(enable)
```

相关命令：

输入命令 show qos map cos-dscp-map 查看 Cos-Queue 的映射

输入命令 clear qos map cos-dscp-map 恢复 Cos-Queue 的映射

3.9.3 set qos map 802.1P-cos-map

功能：配置 802.1P 与 Cos 的映射关系

语法：set qos map dot1p-cos-map INT INT INT INT INT INT INT INT

描述：

INT: CoS 为 0 时映射的 802.1P 优先级值

INT: CoS 为 1 时映射的 802.1P 优先级值

INT: CoS 为 2 时映射的 802.1P 优先级值

INT: CoS 为 3 时映射的 802.1P 优先级值

INT: CoS 为 4 时映射的 802.1P 优先级值

INT: CoS 为 5 时映射的 802.1P 优先级值

INT: CoS 为 6 时映射的 802.1P 优先级值

INT: CoS 为 7 时映射的 802.1P 优先级值

缺省参数:

CoS 为 0 时映射的 802.1P 优先级值为 0

CoS 为 1 时映射的 802.1P 优先级值为 1

CoS 为 2 时映射的 802.1P 优先级值为 2

CoS 为 3 时映射的 802.1P 优先级值为 3

CoS 为 4 时映射的 802.1P 优先级值为 4

CoS 为 5 时映射的 802.1P 优先级值为 5

CoS 为 6 时映射的 802.1P 优先级值为 6

CoS 为 7 时映射的 802.1P 优先级值为 7

命令模式: Privileged

例子: 设置 cos 为 2 时映射的 802.1P 值为 4

```
console>(enable) set qos map dot1p-cos-map?
```

```
Usage:set qos map dot1p-cos-map <dot1p_cos0><dot1p_cos1>...<dot1p_cos7>
```

```
Paras:the cos value is 0-7
```

```
console>(enable) set qos map dot1p-cos-map 0 1 4 3 4 5 6 7
```

```
console>(enable)
```

相关命令: 输入命令 `show qos map dot1p-cos-map` 查看 Cos-802.1P 的映射; 输入命令 `clear qos map dot1p-con-map` 恢复 Cos-802.1P 的映射

3.9.4 set qos map mac-cos-map

功能: 配置 MAC 与 Cos 的映射关系

语法: `set qos map mac-cos-map INT <COS>`

描述:

INT: MAC 地址

<COS>: 0-7

缺省参数: N/A

命令模式: Privileged

例子: 设置 MAC 地址为 00e0.4c49.363f 映射 COS=2

```
console>(enable) set qos map mac-cos-map?
```

```
Usage:set qos map mac-cos-map <mac_addr> <cos>
```

```
Paras:cos(0-7)
```

```
console>(enable) set qos map mac-cos-map 00e0.4c49.363f 2
```

```
console>(enable)
```

相关命令: 输入命令 `show qos map mac-cos-map` 查看 Cos-MAC 的映射; 输入命令 `clear qos map mac-cos-map` 修改 Cos-MAC 的映射

3.9.5 set qos map port-cos-map

功能: 配置 port 与 Cos 的映射关系

语法: `set qos map port-cos-map <port_list> <COS>`

描述:

<port_list>: 端口列表

<COS>:0-7

缺省参数: N/A

命令模式: Privileged

例子:

```
console>(enable) set qos map port-cos-map?
Usage:set qos map port-cos-map <port_list> <cos>
Paras:port_list(1-40), cos(0-7)
console>(enable) set qos map port-cos-map 2 2
console>(enable)
```

相关命令: 输入命令 `show qos map port-cos-map` 查看 Cos-port 的映射

3.9.6 set qos map vlan-cos-map

功能: 配置 port 与 Cos 的映射关系

语法: `set qos map vlan-cos-map <vlan_list> <COS>`

描述:

<vlan_list>: vlan 列表

<COS>:0-7

缺省参数: N/A

命令模式: Privileged

例子:

```
console>(enable) set qos map vlan-cos-map?
Usage:set qos map vlan-cos-map <vlan_list> <cos>
Paras:cos(0-7),vlan_list(1-4094)
console>(enable) set qos map vlan-cos-map 2 2
console>(enable)
```

相关命令: 输入命令 `show qos map vlan-cos-map` 查看 Cos-vlan 的映射; 输入命令 `clear qos map vlan-cos-map` 修改 Cos-vlan 的映射

3.9.7 set qos queue egress-policy

功能: 配置出口队列调度方法

语法: `set qos queue egress-policy [Always-high|wrr]`

描述:

Always-high: 永远高优先级

Wrr: 加权平均队列调度

缺省参数: N/A

命令模式: Privileged

例子:

```

console>(enable) set qos queue egress-policy?
Usage:set qos queue egress-policy [Always-high|wrr]
console>(enable) set qos queue egress-policy wrr
console>(enable)

```

相关命令：输入命令 show qos queue egress-policy 查看队列调度

3.10 set security command

3.10.1 set security help

功能：显示 set security 的帮助信息

语法：set security help

描述：“set security help”和“set security ?”功能完全一样

缺省参数：N/A

命令模式：Privileged

例子：

```

console>(enable) set security ?
set security MAC-aging          Set MAC aging time
set security filter-MAC        Create MAC filter entry
set security mac-learning      Set port learning MAC (enable|disable)
set security static-MAC       Create static MAC entry
console>(enable)

```

相关命令：

set security filter-mac

set security mac-aging

set security static-mac

set security mac-learning

3.10.2 set security filter-mac

功能：配置 MAC 地址过滤条目

语法：set security filter-mac MAC

描述：MAC 地址，AAAA.BBBB.CCCC

缺省参数：N/A

命令模式：Privileged

例子：将 MAC 地址为 00e0.4c49.363f 进行过滤

```

console>(enable) set security filter-mac ?
Usage:set security filter-MAC <mac_addr>
console>(enable) set security filter-mac 00e0.4c49.363f
console>(enable)

```

相关命令：输入命令 show security filter-mac 查看 MAC 地址过滤表；输入命令 clear security filter-mac 进行修改

3.10.3 set security static-mac

功能：配置静态 MAC 地址条目

语法：set security static-mac MAC INT INT

描述：

MAC：MAC 地址，AAAA.BBBB.CCCC

INT：端口号，<port_num>，范围：1-40

缺省参数：N/A

命令模式：Privileged

例子：

```
console>(enable) set security static-mac ?
Usage:set security static-MAC <MAC_addr> <port_num>
Paras:port_num(1-40)
console>(enable) set security static-mac aaaa.aaaa.aaaa 5
console>(enable)
```

相关命令：输入命令 show security static-mac 查看静态地址表；输入命令 clear security static-mac 进行修改

3.10.4 set security mac-aging

功能：配置 MAC 老化时间

语法：set security mac-aging INT

描述：

INT：MAC 地址老化时间，范围：30-1000s

缺省参数：MAC 地址老化时间为 300s

命令模式：Privileged

例子：将 MAC 地址表的老化时间设置为 100S

```
console>(enable) set security mac-aging ?
Usage:set security mac-aging <aging_time>
Paras:num(30-1000)
console>(enable) set security mac-aging 100
console>(enable)
```

相关命令：输入命令 show security mac-aging 查看 MAC 地址表老化时间

3.10.5 set security mac-learning

功能：配置端口 MAC 地址学习

语法：set security mac-learning <port_list> [disable | enable]

描述：

<port_list>：端口列表

缺省参数：N/A

命令模式：Privileged

```
例子：关闭 2 号端口的 MAC 地址学习能力
console>(enable) set security mac-learning?
Usage:set security mac-learning <port_list> [ disable | enable ]
Paras:port_list(1-40)
console>(enable) set security mac-learning 2 disable
console>(enable)
```

相关命令：输入命令 show security mac-learning 查看端口 MAC 地址学习状态

3.11 set mirror command

3.11.1 set mirror help

功能：显示 set mirror 的帮助信息

语法：set mirror help

描述：“set mirror help”和“set mirror ?”功能完全一样

缺省参数：N/A

命令模式：Privileged

```
例子：
console>(enable) set mirror ?
set mirror                Enable/Disable mirror function
set mirror capture-port   Set a port to capture traffic
set mirror monitored-port egress Capture egress traffic
set mirror monitored-port ingress Capture ingress traffic
console>(enable)
```

3.11.2 set mirror disable

功能：关闭端口镜像功能

语法：set mirror disable

描述：

disable：关闭端口镜像功能

缺省参数：端口镜像功能为“Disable”

命令模式：Privileged

```
例子：
console>(enable) set mirror disable ?
Usage: set mirror [enable|disable]
console>(enable) set mirror disable
console>(enable)
```

相关命令：输入命令 show mirror 查看配置信息

3.11.3 set mirror enable

功能：启用端口镜像功能

语法：Set mirror enable

描述：

enable：启用端口镜像功能

缺省参数：端口镜像功能为“Disable”

命令模式：Privileged

例子：

```
console>(enable) set mirror enable ?
```

```
Usage: set mirror [enable|disable]
```

```
console>(enable) set mirror enable
```

```
console>(enable)
```

相关命令：输入命令 show mirror 查看配置信息

3.11.4 set mirror capture-port

功能：配置捕获端口

语法：Set mirror capture-port INT

描述：

INT：端口号，范围：1-28

缺省参数：N/A

命令模式：Privileged

例子：将 4 号端口设置为捕获端口

```
console>(enable) set mirror capture-port ?
```

```
Usage: set mirror capture-port <port num>
```

```
Paras:port_num(1-28)
```

```
console>(enable) set mirror capture-port 4
```

```
console>(enable)
```

相关命令：输入命令 show mirror 查看配置信息

3.11.5 set mirror monitored-port egress

功能：配置监控端口的出口数据

语法：set mirror monitored-port egress <port_list>

描述：

<port_list>：端口列表

缺省参数：N/A

命令模式：Privileged

例子：捕获 6 号端口的出口数据

```
console>(enable) set mirror monitored-port?
```

```
set mirror monitored-port egress
```

```
Capture egress traffic
```

```
set mirror monitored-port ingress          Capture ingress traffic
console>(enable) set mirror monitored-port egress?
Usage:set mirror monitored-port egress <port_list>
Paras:port_list(1-40)
console>(enable) set mirror monitored-port egress 6
console>(enable)
```

相关命令：输入命令 `show mirror` 查看配置信息；输入命令 `clear mirror monitored_port egress` 进行修改

3.11.6 set mirror monitored-port ingress

功能：配置监控端口的入口数据

语法：set mirror monitored-port ingress <port_list>

描述：

<port_list>:端口列表

缺省参数：N/A

命令模式：Privileged

例子：捕获 6 号端口的入口数据

```
console>(enable) set mirror monitored-port?
set mirror monitored-port egress          Capture egress traffic
set mirror monitored-port ingress        Capture ingress traffic
console>(enable) set mirror monitored-port ingress?
Usage:set mirror monitored-port ingress <port_list>
Paras:port_list(1-40)
console>(enable) set mirror monitored-port ingress 6
console>(enable)
```

相关命令：输入命令 `show mirror` 查看配置信息；输入命令 `clear mirror monitored-port ingress` 进行修改

3.12 set ip telnet server

3.12.1 set ip telnet server disable

功能：关闭 telnet 管理

语法：set ip telnet server [disable|enable]

描述：

disable：关闭 telnet 管理

缺省参数：

telnet 管理状态为“disable”

命令模式：Privileged

例子：

```
console>(enable) set ip telnet server ?
```



```
Usage:set ip telnet server[enable|disable]
console>(enable) set ip telnet server disable
console>(enable)
```

相关命令：输入命令 show ip telnet server 查看 telnet 状态

3.12.2 set ip telnet server enable

功能：启用 telnet 管理

语法：set ip telnet server [disable|enable]

描述：Enable：启用 telnet 管理

缺省参数：telnet 管理状态为“disable”

命令模式：Privileged

例子：

```
console>(enable) set ip telnet server ?
Usage:set ip telnet server[enable|disable]
console>(enable) set ip telnet server enable
console>(enable)
```

相关命令：输入命令 show ip telnet server 查看 telnet 状态

3.13 set ip http server

3.13.1 set ip http server disable

功能：关闭 http 管理

语法：set ip http server [disable|enable]

描述：disable：关闭 http 管理

缺省参数：http 管理状态为“disable”

命令模式：Privileged

例子：

```
console>(enable) set ip http server ?
Usage: set ip http server [enable|disable]
console>(enable) set ip http server disable
console>(enable)
```

相关命令：输入命令 show ip http server 查看 http server 状态

3.13.2 set ip http server enable

功能：启用 http 管理

语法：set ip http server [disable|enable]

描述：Enable：启用 http 管理

缺省参数: http 管理状态为“disable”

命令模式: Privileged

例子:

```
console>(enable) set ip http server ?
Usage: set ip http server [enable|disable]
console>(enable) set ip http server enable
console>(enable)
```

相关命令: 输入命令 show ip http server 查看 http server 状态

3.14 set manage ip

功能: 启用 IP 地址管理

语法: set manage ip <IP>

描述: <IP> 通过 IP 管理 7228NSM。

缺省参数: N/A

命令模式: Privileged

例子:

```
console>(enable) set manage ip ?
Usage: set manage ip <IP>
console>(enable) set manage ip 192.168.2.123
console>(enable)
```

相关命令: 输入命令 show system 查看 ip 状态

第四章 show commands

4.1 show port commands

4.1.1 show port help

功能：显示 show port 的帮助信息

语法：

show port help

描述：“show port help”和“show port ?”功能完全一样

缺省参数：N/A

命令模式：Normal

例子：

```
console>(enable) show port ?
```

show port counter	Show port counter information
show port rate-shaping	Show port ingress and egress rate-shaping
show port spantree	Show spantree information on ports
show port state	Show port infomation
show port storm-limit	Show port storm limit console>(enable)

相关命令：

show port counter

show port spantree

show port state

show port storm-limit

show port rate-shaping

4.1.2 show port state

功能：显示端口的带宽控制，包括入口带宽和出口带宽、配置流控和当前的实际流控、配置的速度和当前实际的速度、配置的双工和当前实际的双工、端口安全状态、是否为优先级端口、管理状态，当前连接状态。

语法：show port state

描述：N/A

缺省参数：N/A

命令模式：Normal

例子：

```
console>(enable) show port state ?
```

```
Usage:show port state
```

```
console>(enable) show port state
```

Port	Manage	Link	Speed	Duplex	Flow_Control
------	--------	------	-------	--------	--------------

State	State	Config	Actual	Config	Actual	Config	Actual	Actual
port 1	Enable	Up	Auto	100M	Auto	Full	Disable	Disable
port 2	Enable	Up	100M	100M	Full	Full	Enable	Enable
port 3	Enable	Up	Auto	100M	Auto	Full	Disable	Disable
port 4	Enable	Up	Auto	100M	Auto	Full	Disable	Disable
port 5	Enable	Up	Auto	100M	Auto	Full	Disable	Disable
port 6	Enable	Down	Auto	N/A	Auto	N/A	Disable	N/A
port 7	Enable	Up	Auto	100M	Auto	Full	Disable	Disable
port 8	Enable	Down	Auto	N/A	Auto	N/A	Disable	N/A
port 9	Enable	Down	Auto	N/A	Auto	N/A	Disable	N/A
port10	Enable	Down	Auto	N/A	Auto	N/A	Disable	N/A
port11	Enable	Down	Auto	N/A	Auto	N/A	Disable	N/A
port12	Enable	Up	Auto	1000M	Auto	Full	Disable	Disable
-----MORE-----								

相关命令:

- set port disable
- set port enable
- set port duplex
- set port speed
- set port flow-control

4.1.3 show port counters

功能: 显示端口的统计信息 (包括接收包总字节、发送包的总字节, 接收包数、发送包的数, 冲突包、丢弃包、BroadcastPkts、MulticastPkts、OversizePkts、Fragments、Jabbers、64Pkts、65to127Pkts、128to255Pkts、256to511Pkts、512to1023Pkts、1024to1518Pkts)

语法: show port counter

描述: N/A

缺省参数: N/A

命令模式: Normal

例子:

```
console>(enable) show port counter ?
```

```
Usage:show port counter
```

```
console>(enable) show port counter
```

port	InOctets	InPkts	OutOctets	OutPkts	DropPkts	Collisions
port 1	0	0	0	0	0	0
port 2	0	0	0	0	0	0
port 3	0	0	0	0	0	0
port 4	0	0	0	0	0	0
port 5	0	0	0	0	0	0
port 6	0	0	0	0	0	0

```

port 7      0      0      0      0      0      0
port 8      0      0      0      0      0      0
port 9      0      0      0      0      0      0
port 10     0      0      0      0      0      0
port 11     0      0      0      0      0      0
port 12     0      0      0      0      0      0
-----MORE-----
port      Broadcast      Multicast      Undersize      Oversize      Fragments      Jabers
-----
port 1      0      0      0      0      0      0
port 2      451      81      0      0      0      0
port 3      451      81      0      0      0      0
port 4      452      81      0      0      0      0
port 5      451      81      0      0      0      0
port 6      451      81      0      0      0      0
port 7      451      81      0      0      0      0
port 8      451      81      0      0      0      0
port 9      451      81      0      0      0      0
port 10     451      81      0      0      0      0
port 11     451      81      0      0      0      0
port 12     451      81      0      0      0      0

port      64      65-127      128-255      256-511      512-1023      1024-1518
-----
port 1      0      0      0      0      0      0
port 2      0      0      0      0      0      0
port 3      0      0      0      0      0      0
port 4      0      0      0      0      0      0
port 5      0      0      0      0      0      0
port 6      0      0      0      0      0      0
port 7      0      0      0      0      0      0
port 8      0      0      0      0      0      0
port 9      0      0      0      0      0      0
port 10     0      0      0      0      0      0
port 11     0      0      0      0      0      0
port 12     0      0      0      0      0      0
console>(enable)

```

相关命令：clear port counters

4.1.4 show port storm-limit

功能：显示端口广播风暴抑制阈值

语法：show port stom-limit

描述: N/A

缺省参数: N/A

命令模式: Normal

例子:

```
console>(enable) show port storm-limit ?
```

```
Usage:show port storm-limit
```

```
console>(enable) show port storm-limit
```

Port	Storm Limit Mode	Storm Limit Rate
------	------------------	------------------

Port 1	BroadOnly	N/A
--------	-----------	-----

Port 2	BroadOnly	N/A
--------	-----------	-----

Port 3	BroadOnly	N/A
--------	-----------	-----

Port 4	BroadOnly	N/A
--------	-----------	-----

Port 5	BroadOnly	N/A
--------	-----------	-----

Port 6	BroadOnly	N/A
--------	-----------	-----

Port 7	BroadOnly	N/A
--------	-----------	-----

Port 8	BroadOnly	N/A
--------	-----------	-----

Port 9	BroadOnly	N/A
--------	-----------	-----

Port 10	BroadOnly	N/A
---------	-----------	-----

Port 11	BroadOnly	N/A
---------	-----------	-----

Port 12	BroadOnly	N/A
---------	-----------	-----

Port 13	BroadOnly	N/A
---------	-----------	-----

Port 14	BroadOnly	N/A
---------	-----------	-----

Port 15	BroadOnly	N/A
---------	-----------	-----

Port 16	BroadOnly	N/A
---------	-----------	-----

Port 17	BroadOnly	N/A
---------	-----------	-----

Port 18	BroadOnly	N/A
---------	-----------	-----

Port 19	BroadOnly	N/A
---------	-----------	-----

Port 20	BroadOnly	N/A
---------	-----------	-----

Port 21	BroadOnly	N/A
---------	-----------	-----

```
console>(enable)
```

相关命令:

```
set port storm-limit mode
```

```
set port storm-limit rate
```

4.1.5 show port spantree

功能: 显示端口生成树状态

语法: show port spantree

描述: N/A

缺省参数: N/A

命令模式: Normal

例子:

```

console>(enable) show port spantree ?
Usage:show port spantree
console>(enable) show port spantree
Port      Manage_State  Link_State  Fast_Port  Port_Cost  Port_Pri  STP_State
-----
port1     Disable       Down        Enable     auto       128       Disable
port2     Enable        Up          Disable    10         128       Forwarding
port3     Disable       Down        Enable     auto       128       Disable
port4     Enable        Up          Disable    10         128       Forwarding
port5     Disable       Down        Enable     auto       128       Disable
port6     Enable        Up          Disable    10         128       Forwarding
port7     Disable       Down        Enable     auto       128       Disable
port8     Enable        Up          Disable    10         128       Forwarding
port9     Disable       Down        Enable     auto       128       Disable
port10    Enable        Up          Disable    10         128       Forwarding
port11    Disable       Down        Enable     auto       128       Disable
port12    Enable        Up          Disable    10         128       Forwarding
console>(enable)

```

相关命令：

set port spantree portcost

set port spantree portfast

set port spantree portpri

4.1.6 show port rate-shaping

功能：显示端口带宽限制

语法：show port rate-shaping

描述：N/A

缺省参数：N/A

命令模式：Normal

```

例子：
console>(enable) show port rate-shaping ?
Usage:show port ingress and egress rate-shaping
console>(enable) show port rate-shaping
Port      Ingress Rate Shaping  Egress Rate Shaping
-----
Port  1                N/A                  N/A
Port  2                N/A                  N/A
Port  3                N/A                  N/A
Port  4                N/A                  N/A
Port  5                N/A                  N/A
Port  6                N/A                  N/A
Port  7                N/A                  N/A

```

```

Port 8          N/A          N/A
Port 9          N/A          N/A
Port 10         N/A          N/A
Port 11         N/A          N/A
Port 12         N/A          N/A
Port 13         N/A          N/A
Port 14         N/A          N/A
Port 15         N/A          N/A
Port 16         N/A          N/A
Port 17         N/A          N/A
Port 18         N/A          N/A
Port 19         N/A          N/A
Port 20         N/A          N/A
Port 21         N/A          N/A
-----MORE-----
console>(enable)
    
```

相关命令:

Set port rate-shaping egress

Set port rate-shaping ingress

4.2 show channel

功能: 显示聚合组端口状态和成员

语法: show channel

描述: N/A

缺省参数: NA 命令模式: Normal

例子:

```
console>(enable) show channel?
```

```
Usage:show channel
```

```
console>(enable) show channel
```

channel	manage-stae	link state	member
channel 1	enable	up	port 1 port 2 port 3 port 4
channel 2	enable	up	port 5 port 6 port 7 port 8

```
console>(enable)
```

相关命令:

set channel

clear channel

4.3 show snmp commands

4.3.1 show vlan

功能：显示系统 vlan 模式，vlan 的成员

语法：show vlan

描述：N/A

缺省参数：N/A

命令模式：Normal

例子：

```
console>(enable) show vlan ?
```

```
Usage:show vlan [<vlan_list>| ]
```

```
Paras:vlan_list(1-4094)
```

```
console>(enable) show vlan
```

vid	name	member
001	test1	port 1 port 2 port 3
002	test2	port 5 port 6 port 7

```
console>(enable)
```

相关命令：

set vlan

set vlan name

set vlan type port-based

set vlan type dot1q-based

clear vlan

4.3.2 show vlan type

功能：显示 VLAN 类型

语法：show vlan type

描述：N/A

缺省参数：N/A

命令模式：Normal

例子：

```
console>(enable) show vlan type?
```

```
Usage:show vlan type
```

```
console>(enable) show vlan type
```

```
Current vlan type is dot1q-based.
```

```
console>(enable)
```

相关命令：

set vlan

set vlan name

clear vlan

4.4 show trunk

功能：显示 vlan 的 trunk 端口

语法：show trunk

描述：N/A

缺省参数：N/A

命令模式：Normal

例子：

```
console>(enable) show trunk ?
Usage:show trunk [<port_num>| ]
Paras:port_num(1-40)
console>(enable) show trunk
port                               vid
-----
port 1                             2, 3, 4
port 2                             2, 4,
console>(enable)
```

相关命令：

set trunk

clear trunk

4.5 show snmp commands

4.5.1 show snmp

功能：显示 snmp 管理的消息，包括 community 和接收 trap 主机

语法：show snmp

描述：N/A

缺省参数：N/A

命令模式：Normal

例子：

```
console>(enable) show snmp ?
Usage:show snmp
console>(enable) show snmp
snmp agent:                Enable
snmp trap:                 Enable
snmp community:
string                      access
-----
public                      read-only
```

```
private                               write
snmp trap management:
management host                       trap community
-----
192.168.2.165                         private
console>(enable)
```

相关命令:

```
set snmp disable
set snmp enable
set snmp community
set snmp trap
set snmp rmon
```

4.5.2 show snmp rmon

功能: 显示 snmp rmon 的状态

语法: show snmp rmon

描述: N/A

缺省参数: N/A

命令模式: Normal

```
例子:
console>(enable) show snmp rmon ?
Usage:show snmp rmon
console>(enable) show snmp rmon
SNMP RMON:                               Enable
console>(enable)
```

相关命令:

```
set snmp rmon disable
set snmp rmon enable
```

4.6 show spantree

功能: 显示生成树的相关信息, 包括 spanning tree state、priority、hello-time、forward-delay、max-age; 桥的信息: 根桥优先级(Root Bridge Priority)、根桥 MAC 地址(Root Bridge MAC)、根路径成本(Root Path Cost)、根接口(Root Port)、根桥指定的最大时限(Max Age)、根桥指定的 Hello 时间(Hello Time)、根桥指定的转发延时(Forward Delay)

语法: show spantree

描述: N/A

缺省参数: N/A

命令模式: Normal

```
例子:
console>(enable) show spantree ?
```

```

Usage:show spantree
console>(enable) show spantree
Spanning Tree Status:           Disable
Priority:                        32768
Hello Time:                      2
Forward Delay:                   15
Maxage:                          20

Bridge Information:
-----
Root Bridge Priority:            0
Mac Address:                    0000.0000.0000
Root Path Cost:                 0
Root Bridge Port:               1
Root Maxage:                    0
Root Bridge Time:               0
Root Bridge Forward Delay:      0
console>(enable)

```

相关命令：

```

set spantree disable
set spantree enable
set spantree priority
set spantree maxage
set spantree hello
set spantree fwddelay
clear spantree root

```

4.7 show igmp-snooping

功能：显示 igmp snooping 的状态及窥探到的多播组

语法：show igmp-snooping

描述：N/A

缺省参数：N/A

命令模式：Normal

```

例子：
console>(enable) show igmp-snooping ?
Usage:show igmp-snooping
console>(enable) show igmp-snooping
igmp snooping state:           enable
Multicast Group  VID    Port
-----
224.111.111.112  4011  Port12
224.111.131.112  4011  Port12

```

```
224.111.121.112 4011 Port11
224.111.151.112 4011 Port12
console>(enable)
```

相关命令:

```
set igmp-snooping disable
```

```
set igmp-snooping enable
```

4.8 show multicast router

功能: 显示连接路由器端口

语法: show multicast router

缺省参数: N/A

命令模式: Normal

例子:

```
console>(enable)show multicast router ?
```

```
Usage:show multicast router
```

```
console>(enable)show multicast router
```

```
Port      VID      Type      State
```

```
-----
```

```
port1    4000    Static    Active
```

```
port12   4002    Dynamic   Invalid
```

```
port8     6       Static    Active
```

```
port12    9       Dynamic   Invalid
```

```
console>(enable)
```

相关命令:

```
set multicast router
```

```
clear multicast router
```

4.9 show system

功能: 显示系统的信息, 包括系统名字、系统位置、系统联系方式、系统 MAC 地址、系统 IP 地址、系统软件版本信息; console 管理的配置信息: 包括波特率、数据位、奇偶校验、停止位、数据流控制

描述: N/A

缺省参数: N/A

命令模式: Normal

例子:

```
console>(enable) show system ?
```

```
Usage:show system
```

```
console>(enable) show system
```

```
System name:                MS3241FM
```

```
System location:            shenzhen
```

```
System contact:          MS3241FM_system
System IP:               192.168.2.11
System Mask:             255.255.255.0
Default Gateway:        192.168.2.1
System MAC:              0810.C883.6DB4
system management vlan: 1
console>(enable)
```

相关命令:

```
set system contact
set system default-gateway
set system ip
set system location
set system mac
set system management-vlan
set system name
```

4.10 show qos commands

4.10.1 show qos help

功能: 显示 show qos 的帮助信息

语法: show qos help

描述: “show qos help”和“show qos ?”功能完全一样

缺省参数: N/A

命令模式: Normal

例子: console>(enable) show qos ?

```
show qos map cos-queue-map          Show qos map cos-queue-map
show qos map dot1p-cos-map           Show qos map cos-queue-map
show qos map mac-cos-map             Show qos map mac-cos-map
show qos map port-cos-map            Show each port's cos
show qos map vlan-cos-map            Show qos map vlan-cos-map
show qos queue egress-policy         Show qos queue egress-poli
console>(enable)
```

相关命令:

```
set qos map cos-queue-map
set qos map dot1p-cos-map
set qos map mac-cos-map
set qos map port-cos-map
set qos map vlan-cos-map
set qos queue egress-policy
```

4.10.2 show qos map cos-queue-map

功能：显示 CoS-Queue 的映射关系

语法：set qos map cos-queue-map

描述：N/A

缺省参数：N/A

命令模式：Normal

例子：

```
console>(enable) show qos map cos-queue-map ?
```

```
Usage:show qos map cos-queue-map
```

```
console>(enable) show qos map cos-queue-map
```

```
cos          queue
```

```
-----
```

1	0
2	0
3	1
4	1
5	2
6	2
7	3
8	3

```
console>(enable)
```

相关命令：

```
set qos map cos-queue-map
```

```
clear qos map cos-queue-map
```

4.10.3 show qos map dot1p-cos-map

功能：显示 Cos-802.1P 优先级的映射关系

语法：Show qos map dot1p-cos-map

描述：N/A

缺省参数：N/A

命令模式：Normal

例子：

```
console>(enable) Show qos map dot1p-cos-map ?
```

```
Usage: Show qos map dot1p-cos-map
```

```
console>(enable) Show qos map dot1p-cos-map
```

```
dot1p_priority  Cos
```

```
-----
```

0	0
1	1
2	2
3	3

```
4          4
5          5
6          6
7          7
```

```
console>(enable)
```

相关命令:

```
set qos map dot1p-cos-map
```

```
clear qos map dot1p-cos-map
```

4.10.4 show qos map mac-cos-map

功能: 显示 Cos-MAC 的映射关系

语法: show qos map mac-cos-map

描述: N/A

缺省参数: N/A

命令模式: Normal

例子:

```
console>(enable) show qos map mac-cos-map ?
```

```
Usage: show qos map mac-cos-map
```

```
console>(enable) show qos map mac-cos-map
```

```
mac          cos
00e0.4c49.363f  2
```

```
console>(enable)
```

相关命令:

```
set qos map mac-cos-map
```

```
clear qos map mac-cos-map
```

4.10.5 show qos map port-cos-map

功能: 显示 Cos-port 的映射关系

语法: show qos map port-cos-map

描述: N/A

缺省参数: N/A

命令模式: Normal

例子:

```
console>(enable) show qos map port-cos-map ?
```

```
Usage: show qos map port-cos-map
```

```
console>(enable) show qos map port-cos-map
```

```
Port  cos
```

```
-----
1      1
2      1
3      2
```



```
4      3
5      3
console>(enable)
```

相关命令:

```
set qos map port-cos-map
clear qos map prot-cos-map
```

4.10.6 show qos map vlan-cos-map

功能: 显示 Cos-vlan 的映射关系

语法: show qos map vlan-cos-map

描述: N/A

缺省参数: N/A

命令模式: Normal

例子:

```
console>(enable) show qos map vlan-cos-map ?
Usage: show qos map vlan-cos-map
console>(enable) show qos map vlan-cos-map
vid      cos
-----
2        1
3        2
4        3
5        3
console>(enable)
```

相关命令:

```
set qos map vlan-cos-map
clear qos map vlan-cos-map
```

4.10.7 show qos queue egress-policy

功能: 显示队列调度方法

语法: show qos queue egress-policy

描述: N/A

缺省参数: N/A

命令模式: Normal

例子:

```
console>(enable) show qos queue egress-policy ?
Usage: show qos queue egress-policy
console>(enable) show qos queue egress-policy
current egress policy:WRR
console>(enable)
```

相关命令:

set qos queue egress-policy

4.11 show security commands

4.11.1 show security help

功能: 显示 show security 的帮助信息

语法: show security help

描述: “show security help”和“show security ?”功能完全一样

缺省参数: N/A

命令模式: Privileged

例子: console>(enable) show security ?

show security MAC-aging	Show MAC aging time
show security filter-MAC	Show MAC filter entry
show security mac-learning	Show port security status
show security static-MAC	Show static mac table information
console>(enable)	

相关命令:

set security MAC-aging

set security filter-MAC

set security mac-learning

set security static-MAC

clear security filter-mac

clear security static-MAC

4.11.2 show security static-mac

功能: 显示静态 MAC 地址条目

语法: show security static-mac

描述: N/A

缺省参数: N/A

命令模式: Normal

例子:

console>(enable) show security static-mac ?

Usage:show security static-mac

console>(enable) show security static-mac

MAC	port

00e0.4c49.363f	port12
00e0.4c49.363e	port1
00e0.4c49.363d	port4

```
console>(enable)
```

相关命令:

```
set security static-mac
```

```
clear security static-mac
```

4.11.3 show security filter-mac

功能: 显示过滤 MAC 地址条目

语法: `show security filter-mac`

描述: N/A

缺省参数: N/A

命令模式: Normal

例子:

```
console>(enable) show security filter-mac ?
```

```
Usage:show security filter-mac
```

```
console>(enable) show security filter-mac
```

```
NO    MAC
```

```
-----
```

```
1     00e0.4c49.363f
```

```
2     00e0.4c49.363e
```

```
3     00e0.4c49.363d
```

```
console>(enable)
```

相关命令:

```
set security filter-mac
```

```
clear security filter-mac
```

4.11.4 show security mac-aging

功能: 显示 MAC 地址老化时间

语法: `show show security mac-aging`

描述: N/A

缺省参数: N/A

命令模式: Normal

例子:

```
console>(enable) show security mac-aging ?
```

```
Usage: show security mac-aging
```

```
console>(enable) show security mac-aging
```

```
MAC Table Aging Time:          300
```

```
console>(enable)
```

相关命令:

```
set security mac-aging
```

```
set security static-mac
```

clear security static-mac

4.11.5 show security mac-learning

功能：显示端口 MAC 地址学习

语法：show security mac-learning

描述：N/A

缺省参数：N/A

命令模式：Normal

例子：

```
console>(enable) show security mac-learning ?
```

```
Usage: show security mac-learning
```

```
console>(enable) show security mac-learning
```

```
Port    MAC_Learning
```

```
Port1   Enable
```

```
Port2   Enable
```

```
Port3   Enable
```

```
Port4   Enable
```

```
Port5   Enable
```

```
Port6   Enable
```

```
Port7   Enable
```

```
Port8   Enable
```

```
Port9   Enable
```

```
Port10  Enable
```

```
Port11  Enable
```

```
Port12  Enable
```

```
Port13  Enable
```

```
Port14  Enable
```

```
Port15  Enable
```

```
-----More-----
```

```
console>(enable)
```

相关命令：

set security mac-aging

set security static-mac

clear security static-mac

4.12 show mirror

功能：显示端口镜像信息

语法：Show mirror

描述：N/A

缺省参数：N/A

命令模式：Normal

例子:

```
console>(enable) show mirror ?
Usage:show mirror
console>(enable) show mirror
Capture State:          Enable
Capture Port:          Port12
The Traffic of Monitored Port:
Ingress Traffic:      1, 6, 8
Egress Traffic:      2, 7, 8
console>(enable)
```

相关命令:

```
set mirror disable
set mirror enable
set mirror capture-port
set mirror monitored-port egress
set mirror monitored-port ingress
clear mirror monitored-port egress
clear mirror monitored-port ingress
```

4.13 show ip http server

功能: 显示 http server 的状态

语法: show ip http server

描述: N/A

缺省参数: N/A

命令模式: Normal

例子:

```
console>(enable) show ip http server ?
Usage:show ip http server
console>(enable) show ip http server
Http Server:          Enable
Http Port:           80
console>(enable)
```

相关命令:

```
set ip http server
```

4.14 show ip telnet server

功能: 显示 telnet server 的状态

语法: show ip telnet server

描述: N/A

缺省参数: N/A

命令模式: Normal

例子:

```
console>(enable) show ip telnet server ?
```

```
Usage:show ip telnet server
```

```
console>(enable) show ip telnet server
```

```
Telnet Server:                Enable
```

```
Telnet Port:                  23
```

```
console>(enable)
```

相关命令:

```
set ip telnet server
```

4.15 show version

功能: 显示系统软件的版本信息

语法: show version

描述: N/A

缺省参数: N/A

命令模式: Normal

例子:

```
console>(enable) show version ?
```

```
Usage:show version
```

```
console>(enable) show version
```

```
The system fireware version is : Management switch firmware for MS3241FM, V1.30
```

```
console>(enable)
```

相关命令: NA

4.16 show console-info

功能: 显示系统 Console 管理配置信息

语法: show console-info

描述: N/A

缺省参数: N/A

命令模式: Normal

例子:

```
console>(enable) show console-info ?
```

```
Usage:show console-info
```

```
console>(enable) show console-info
```

```
console management config information
```

```
-----  
baud rate:                    9600
```

```
data bits:                    8
```

```
parity:                        none
```

```
stop bits: 1
flowcontrol: none
console>(enable)
```

相关命令: NA

4.17 show syntax

功能: 显示 CLI 语法帮助信息

语法: show syntax

描述: N/A

缺省参数: N/A

命令模式: Normal

例子:

```
console>(enable) show syntax ?
```

```
Usage:show syntax
```

```
console>(enable) show syntax
```

```
The following is description of syntax for 7801NS Command Interface Line
```

```
-----
_num:    a number, such as '2'
```

```
_list:   number list, such as '1-4', or '1-4,8'
```

```
num:     a number, such as '2'
```

```
ip_addr: ip address, format is "A.B.C.D", such as '192.168.1.254'
```

```
sub_mask:ip subnet mask, format is "A.B.C.D", such as '255.255.255.0'
```

```
mac_addr:mac address, format is "A.B.C", such as '00e0.4c49.363f'
```

```
[A|B] ]: only one option between '[' which you can select, such as 'A'
```

```
{A|B} ]: one or more options between '{and}' which you can select, such as 'A|B'
```

```
console>(enable)
```

相关命令: NA

第五章 clear commands

5.1 clear port commands

5.1.1 clear port help

功能：显示 clear port 的帮助信息

语法：clear port help

描述：“clear port help”和“clear port ?”功能完全一样

缺省参数：N/A

命令模式：Privaliged

例子：

```
console>(enable) clear port ?
clear port counters           Clear port statistics counter
clear port rate-shaping       Clear rate-shaping of all ports
clear port spantree portcost  Restore spanning tree port cost to default value
clear port spantree portpri   Restore spanning tree port priority to default value
clear port storm-limit       Clear strom limit of all ports
console>(enable)
```

相关命令：

```
set port rate-shaping egress
set port rate-shaping ingress
set port spantree <port_num> portco
set port spantree <port_num> portfa
set port spantree <port_num> portpr
set port speed
set port storm-limit mode
set port storm-limit rate
show port counter
show port rate-shaping
show port spantree
show port state
show port storm-limit
```

5.1.2 clear port counters

功能：复位 counters

语法：clear port counters

描述：N/A

缺省参数: N/A

命令模式: Privaliged

例子:

```
console>(enable) clear port counters ?
```

```
Usage:clear port counters
```

```
console>(enable) clear port counters
```

```
console>(enable)
```

相关命令: show port counters

5.1.3 clear port spantree portcost

功能: 恢复端口的生成树缺省通路成本

语法: clear port spantree portcost INTLIST

描述:

INTLIST: 端口列表, 例如: 1-20、1-7, 9、1-2, 5-9

缺省参数: N/A

命令模式: Privaliged

例子:

```
console>(enable) clear port spantree portcost ?
```

```
Usage:clear port spantree portcost <port_list>
```

```
port: (1-40)
```

```
console>(enable) clear port spantree portcost 1-12
```

```
console>(enable)
```

相关命令:

```
set port spantree portcost
```

```
show port spantree
```

5.1.4 clear port spantree portpri

功能: 恢复端口的生成树缺省端口优先级

语法: clear port spantree portpri INTLIST

描述:

INTLIST: 端口列表, 例如: 1-20、1-7, 9、1-2, 5-9

缺省参数: N/A

命令模式: Privaliged

例子:

```
console>(enable) clear port spantree portpri ?
```

```
Usage:clear port spantree portpri <port_list>
```

```
port: (1-40)
```

```
console>(enable) clear port spantree portpri 1-12
```

```
console>(enable)
```

相关命令:

```
set port spantree portpri
show port spantree
```

5.1.5 clear port storm-limit

功能：恢复所有端口的缺省广播风暴抑制阈值

语法：clear port storm-limit

描述：N/A

缺省参数：N/A

命令模式：Privileged

例子：

```
console>(enable) clear port storm-limit?
Usage:clear port storm-limit
console>(enable) clear port storm-limit
console>(enable)
```

相关命令：

```
set port storm-limit
show port storm-limit
```

5.1.6 clear port rate-shaping

功能：恢复所有端口的缺省端口限制

语法：clear port rate-shaping

描述：N/A

缺省参数：N/A

命令模式：Privileged

例子：

```
console>(enable) clear port rate-shaping ?
Usage: clear port rate-shaping
console>(enable) clear port rate-shaping
console>(enable)
```

相关命令：

```
set port rate-shaping
show port rate-shaping
```

5.2 clear channel

功能：删除某个聚合组中或聚合组中的某个端口成员

语法：clear channel INT[INTLIST]

描述：

INT：聚合组号

INTLIST：端口列表，例如：1-20、1-7，9、1-2，5-9

缺省参数: N/A

命令模式: Privileged

```
例子: 将 2 号端口聚合组 1 中删除
console>(enable) clear channel ?
Usage:clear channel <channel_num> [<port_list>| ]
Paras:channel_num(1-12),port_list(1-40)
console>(enable) clear channel 1 2
console>(enable)
```

相关命令:

set channel

show channel

5.3 clear vlan

功能: 删除某个 vlan 或 vlan 中的某个端口成员

语法: clear vlan INT[INTLIST]

描述:

INT: vlan 的 vid, 范围: 1-4094

INTLIST: 端口列表 (1-40) 例如: 1-2、1-2, 4、1-2, 4-5

缺省参数: N/A

命令模式: Privileged

```
例子: 从 vid=3 的 vlan 中将 1 号和 2 号端口删除
console>(enable) clear vlan ?
Usage:clear vlan <vid> [<port_list>| ]
Paras:vid (1-4094),port_list (1-40)
console>(enable) clear vlan 3 1-2
console>(enable)
```

相关命令:

set vlan

show vlan

5.4 clear trunk

功能: 删除 vlan trunk 端口

语法: clear trunk INT [INTLIST]

描述:

INT: 端口号, <port_num>, 范围: 1-40

INTLIST: vlan 列表, 例如: 1-2、1-2, 4、1-2, 4-5

缺省参数: N/A

命令模式: Privileged

```
例子: 将 2-4vlan 中的 trunk 端口 (1 号端口) 删除
console>(enable) clear trunk ?
Usage:clear trunk <port_num> [<vlan_list>| ]
```

```
Paras:port_num (1-40),vlan_list (1-4094)
console>(enable) clear trunk 1 2-4
console>(enable)
```

相关命令:

set trunk

show trunk

5.5 clear snmp

5.5.1 clear snmp help

功能: 显示 clear snmp 命令的帮助信息

语法: clear snmp help

描述: N/A

缺省参数: N/A

命令模式: Privileged

例子:

```
console>(enable) clear snmp ?
clear snmp community          Clear snmp community entry
clear snmp trap                Clear snmp trap management host
console>(enable)
```

相关命令:

set snmp trap

show snmp

set snmp community

show snmp

5.5.2 clear snmp community

功能: 删除 snmp community

语法: clear snmp community STR [read-only|write]

描述:

STR: community

read-only: 只读权限的 community

write: 读写权限的 community

缺省参数: N/A

命令模式: Privileged

例子:

```
console>(enable) clear snmp community ?
Usage:clear snmp community <community_string> [read-only|write]
console>(enable) clear snmp community 7228NSM read-only
console>(enable)
```

相关命令:

```
set snmp community
```

```
show snmp
```

5.5.3 clear snmp trap

功能: 删除 snmp trap 管理主机

语法: clear snmp trap IP STR

描述:

IP: 接收 snmp trap 消息的管理主机

STR: 接收 snmp trap 消息的管理主机对应的 trap community

缺省参数: N/A

命令模式: Privileged

例子:

```
console>(enable) clear snmp trap ?
```

```
Usage:clear snmp trap <manage_host_ip_addr> <trap_community_string>
```

```
console>(enable) clear snmp trap 192.168.2.162 public
```

```
console>(enable)
```

相关命令:

```
set snmp trap
```

```
show snmp
```

5.6 clear spantree root

功能: 恢复桥的 priority、hello time、max age、forward delay 的缺省参数

语法: clear spantree root

描述: N/A

缺省参数: N/A

命令模式: Privileged

例子:

```
console>(enable) clear spantree root ?
```

```
Usage: clear spantree root
```

```
console>(enable)
```

相关命令:

```
set spantree disable
```

```
set spantree enable
```

```
set spantree fwddelay
```

```
set spantree hello
```

```
set spantree maxage
```

```
set spantree priority
```

```
show spantree
```

5.7 clear multicast router

功能：修改连接路由器接口

语法：clear multicast router INTLIST INT

描述：

INTLIST：端口列表（1-40），例如：1-2、1-2、4、1-2、4-5

INT：vlan id，范围：1-4094

缺省参数：N/A

命令模式：Privileged

例子：

```
console>(enable) clear multicast router ?
Usage:clear multicast router <port_list> <vid>
Paras:port_list (1-40), vid (1-4094)
console>(enable) clear multicast router 2-6 5
console>(enable)
```

相关命令：

set multicast router

show multicast router

5.8 clear qos commands

5.8.1 clear qos help

功能：显示 clear qos 命令的帮助信息

语法：clear qos help

描述：N/A

缺省参数：N/A

命令模式：Privileged

例子：

```
console>(enable) clear qos ?
clear qos map cos-queue-map          Reset cos-queue map to default
clear qos map dot1p-cos-map          Reset dot1p_cos map to default
clear qos map mac-cos-map            Clear qos map mac-cos-map
clear qos map vlan-cos-map           Clear qos map vlan-cos-map
console>(enable)
```

相关命令：

Set qos map cos-queue-map

Set qos map dot1p-cos-map

Set qos map mac-cos-map

Set qos map vlan-cos-map

Show qos

5.8.2 clear qos map cos-queue-map

功能：恢复 CoS-Queue 的缺省映射关系

语法：clear qos map cos-dscp-map

描述：N/A

缺省参数：N/A

命令模式：Privileged

例子：

```
console>(enable) clear qos map cos-queue-map ?
```

```
Usage:clear qos map cos-queue-map
```

```
console>(enable) clear qos map cos-queue-map
```

```
console>(enable)
```

相关命令：

```
set qos map cos-queue-map
```

```
show qos map cos-queue-map
```

5.8.3 clear qos map dot1p-cos-map

功能：恢复 802.1P-Cos 的缺省映射关系

语法：clear qos map dot1p-cos-map

描述：N/A

缺省参数：N/A

命令模式：Privileged

例子：

```
console>(enable) clear qos map dot1p-cos-map ?
```

```
Usage: clear qos map dot1p-cos-map
```

```
console>(enable) clear qos map dot1p-cos-map
```

```
console>(enable)
```

相关命令：

```
Set qos map dot1p-cos-map
```

```
show qos map dot1p-cos-map
```

5.8.4 clear qos map mac-cos-map

功能：删除 MAC-Cos 的映射

语法：clear qos map mac-cos-map

描述：N/A

缺省参数：N/A

命令模式：Privileged

例子：

```
console>(enable) clear qos map mac-cos-map?
```

```
Usage: clear qos map mac-cos-map <mac_addr>
```

```
console>(enable) clear qos map mac-cos-map 0810.4567.56EF
console>(enable)
```

相关命令:

```
set qos map mac-cos-map
show qos map mac-cos-map
```

5.8.5 clear qos map vlan-cos-map

功能: 删除 vlan-Cos 的映射

语法: clear qos map vlan-cos-map

描述: N/A

缺省参数: N/A

命令模式: Privileged

例子:

```
console>(enable) clear qos map vlan-cos-map?
Usage: clear qos map vlan-cos-map <vlan_list>
console>(enable) clear qos map vlan-cos-map 1
console>(enable)
```

相关命令:

```
set qos map vlan-cos-map
show qos map valn-cos-map
```

5.9 clear security commands

5.9.1 clear security help

功能: 显示 clear security 命令的帮助信息

语法: clear security help

描述: N/A

缺省参数: N/A

命令模式: Privileged

例子:

```
console>(enable) clear security ?
clear security filter-MAC          Clear MAC filter entry
clear security static-MAC         Clear static MAC entry
console>(enable)
```

相关命令:

```
set security filter-mac
show security filter-mac
set security static-mac
show security static-mac
```


5.9.2 clear security static-mac

功能：删除静态地址条目

语法：clear security static-mac MAC

描述：MAC 地址，AAAA.BBBB.CCCC

缺省参数：N/A

命令模式：Privileged

例子：

```
console>(enable) clear security static-mac ?
Usage:clear security static-mac <mac_addr>
console>(enable) clear security static-mac 00e0.4c49.363f 2
console>(enable)
```

相关命令：

set security static-mac

show security static-mac

5.9.3 clear security filter-mac

功能：删除过滤的 MAC 地址条目

语法：clear security filter-mac MAC

描述：MAC 地址，AAAA.BBBB.CCCC

缺省参数：N/A

命令模式：Privileged

例子：

```
console>(enable) clear security filter-mac ?
Usage:clear security filter-mac <mac_addr>
console>(enable) clear security filter-mac 00e0.4c49.3639 2
console>(enable)
```

相关命令：

set security filter-mac

show security filter-mac

5.10 clear mirror commands

5.10.1 clear mirror help

功能：显示 clear mirror 命令的帮助信息

语法：clear mirror help

描述：N/A

缺省参数：N/A

命令模式：Privileged

例子:

```
console>(enable) clear mirror ?
clear mirror monitored-port egress  Clear egress monitored port for mirror
clear mirror monitored-port ingress  Clear ingress monitored port for mirror
console>(enable)
```

相关命令:

```
Set mirror monitored-port egress
Set mirror monitored-port ingress
show mirror
```

5.10.2 clear mirror monitored-port egress

功能: 删除 monitored-port egress

语法: clear mirror monitored-port egress <port_list>

描述:

<port_list>: 端口列表 (1-40)

缺省参数: N/A

命令模式: Privileged

例子:

```
console>(enable) clear mirror monitored-port egress ?
Usage:clear mirror monitored-port egress <port_list>
Paras:port_list(1-40)
console>(enable) clear mirror monitored-port egress 6
console>(enable)
```

相关命令:

```
Set mirror monitored-port egress
show mirror
```

5.10.3 clear mirror monitored-port ingress

功能: 删除 monitored-port ingress

语法: clear mirror monitored-port ingress <port_list>

描述:

<port_list>: 端口列表 (1-40)

缺省参数: N/A

命令模式: Privileged

例子:

```
console>(enable) clear mirror monitored-port ingress ?
Usage:clear mirror monitored-port ingress <port_list>
Paras:port_list(1-40)
console>(enable) clear mirror monitored-port ingress 6
console>(enable)
```

相关命令:

Set mirror monitored-port ingress
show mirror

5.11 clear manage ip

功能：删除管理交换机的 IP。

语法：clear manage ip

描述：N/A

缺省参数：N/A

命令模式：Privileged

例子：

```
console>(enable) clear manage ip ?
```

```
Usage: clear manage ip
```

```
console>(enable) clear manage ip
```

```
console>(enable)
```

相关命令：set manage ip

Show system

第六章 功能键

- “tab”：命令匹配
- “?”：命令查询和帮助
- “方向键上”：向上显示执行的命令
- “方向键下”：向下显示执行的命令
- “空隔”：
- “回车键”：执行命令
- “退格键”：删除命令

CLI 命令索引表

8

3.3.3 802.1Q vlan

C

2.1.2 clear help2.1.6 copy config flash5.1 clear port commands5.1.1 clear port help5.1.2 clear port counters5.1.3 clear port spantree portcost5.1.4 clear port spantree portpri5.1.5 clear port storm-limit5.1.6 clear port rate-shaping5.2 clear channel5.3 clear vlan5.4 clear trunk5.5 clear snmp5.5.1 clear snmp help5.5.2 clear snmp community5.5.3 clear snmp trap5.6 clear spantree root5.7 clear multicast router5.8 clear qos commands5.8.1 clear qos help5.8.2 clear qos map cos-queue-map5.8.4 clear qos map mac-cos-map5.8.5 clear qos map vlan-cos-map5.9 clear security commands5.9.1 clear security help5.9.2 clear security static-mac5.9.3 clear security filter-mac5.10 clear mirror commands5.10.1 clear mirror help5.10.2 clear mirror monitored-port egress5.10.3 clear mirror monitored-port ingress5.11 clear manage ip

D

2.2 disable2.2.1 diable help

E

2.1 enable2.1.1 enable help

P

3.3.2 port-based vlan

R

2.1.9 reboot

S

2.1.3 show help2.1.5 set help2.1.7 set enable password2.1.8 set password2.1.10 set default3.1 set port commands3.1.1 set port help3.1.2 set port enable3.1.3 set port disable3.1.4 set port duplex3.1.5 set port flow-control3.1.6 set port speed3.1.7 set port storm-limit mode3.1.8 set port storm-limit rate3.1.9 set port spantree portcost3.1.10 set port spantree portpri3.1.11 set port spantree portfast3.1.13 set port rate-shaping egress3.2 set channel3.3 set vlan commands3.3.1 set vlan help3.3.2.1 set vlan name3.3.2.2 set vlan3.3.3.1 set trunk3.4 set snmp commands3.4.1 set snmp help3.4.2 set snmp disable3.4.3 set snmp enable3.4.4 set snmp community3.4.5 set snmp trap3.4.5 set snmp rmon enable3.4.6 set snmp rmon disable3.5 set spantree commands3.5.1 set spantree help3.5.2 set spantree enable3.5.3 set spantree disable3.5.4 set spantree priority3.5.5 set spantree hello3.5.6 set spantree maxage3.5.7 set spantree fwddelay3.6 set igmp-snooping commands3.6.1 set igmp-snooping help3.6.2 set igmp-snooping enable3.6.3 set igmp-snooping disable3.7 set multicast router3.7.1 set multicast router help3.7.2 set multicast router3.8 set system commands3.8.1 set system help3.8.2 set system name3.8.3 set system contact3.8.4 set system location3.8.5 set system mac3.8.6 set system IP3.8.7 set system default-gateway3.8.8 set system management-vlan3.9 set qos commands3.9.1 set qos help3.9.2 set qos map cos-queue-map3.9.3 set qos map 802.1P-cos-map3.9.4 set qos map mac-cos-map3.9.5 set qos map port-cos-map3.9.6 set qos map vlan-cos-map3.9.7 set qos queue egress-policy3.10 set security command3.10.1 set security help3.10.2 set security filter-mac3.10.3 set security static-mac3.10.4 set security mac-aging3.10.5 set security mac-learning3.11 set mirror command3.11.1 set mirror help3.11.2 set mirror disable3.11.3 set mirror enable3.11.4 set mirror capture-port3.11.5 set mirror monitored-port egress3.11.6 set mirror monitored-port ingress3.12 set ip telnet server3.12.1 set ip telnet server disable3.12.2 set ip telnet server enable3.13 set ip http server3.13.1 set ip http server disable3.13.2 set ip http server enable3.14 set manage ip4.1 show port commands4.1.1 show port help4.1.2 show port state4.1.3 show port counters4.1.4 show port storm-limit4.1.5 show port spantree4.1.6 show port

rate-shaping4.2 show channel4.3 show snmp commands4.3.1 show vlan4.3.2 show vlan type4.4 show trunk4.5 show snmp commands4.5.1 show snmp4.5.2 show snmp rmon4.6 show spantree4.7 show igmp-snooping4.8 show multicast router4.9 show system4.10 show qos commands4.10.1 show qos help4.10.2 show qos map cos-queue-map4.10.3 show qos map dot1p-cos-map4.10.4 show qos map mac-cos-map4.10.5 show qos map port-cos-map4.10.6 show qos map vlan-cos-map4.10.7 show qos queue egress-policy4.11 show security commands4.11.1 show security help4.11.2 show security static-mac4.11.3 show security filter-mac4.11.4 show security mac-aging4.11.5 show security mac-learning4.12 show mirror4.13 show ip http server4.14 show ip telnet server4.15 show version4.16 show console-info4.17 show syntax