

Intel® Personal Audio Player 3000

QUICK START GUIDE



intel®

Setting up Your Computer for Your Player

WHAT'S ON THE CD ROM

The installation CD-ROM provided with your Intel® Personal Audio Player 3000 includes software for creating, organizing, previewing, and transferring your personal digital music library to your Player.

Intel® Audio Manager

Use the Intel® Audio Manager to create a digital music library, preview your music before you transfer it, and quickly transfer custom playlists to your Player.

Intel® Faceplate Designer

Use the Intel® Faceplate Designer to personalize your Player with your own custom faceplates.

MusicMatch Jukebox* (plus version)

Use MusicMatch Jukebox* to create a digital music library from your own CD collection.

Intel® Audio Sampler Volume 2

The Intel® Audio Sampler, Volume 2 is a brief collection of digital music that you can transfer to your Player to immediately enjoy the Intel digital music experience. To read more about the music and artists, go to:

Start > Programs > Intel Personal Audio Player 3000 > Support and Documentation > About the Intel Audio Sampler Vol. 2

Go to www.intel.com/home/audio/info/download.htm for free downloads and information on upcoming events for selected artists.

INSTALLING THE SOFTWARE

Note: Install the included software before connecting your Player to your computer.

To install the software provided with your Player:

1. Insert the included CD-ROM into your CD-ROM drive.
If the installation doesn't start automatically: click the **Start** menu and then click **Run**.
In the **Run** dialog box, type: "[x]:\setup.exe" where [x] is the letter of your computer's CD-ROM drive.
2. Follow the on-screen prompts.
When requested, enter the *MusicMatch Jukebox Upgrade Key* exactly as it is printed on the back of this guide.

CONNECTING TO YOUR COMPUTER

Peel back the protective cover to your Player's USB port to connect the small end of the included USB cable.

Note: While your Player is connected to a USB port, all of your Player's controls are disabled.

Do not remove the battery while your Player is connected to USB.

USING THE INTEL AUDIO MANAGER

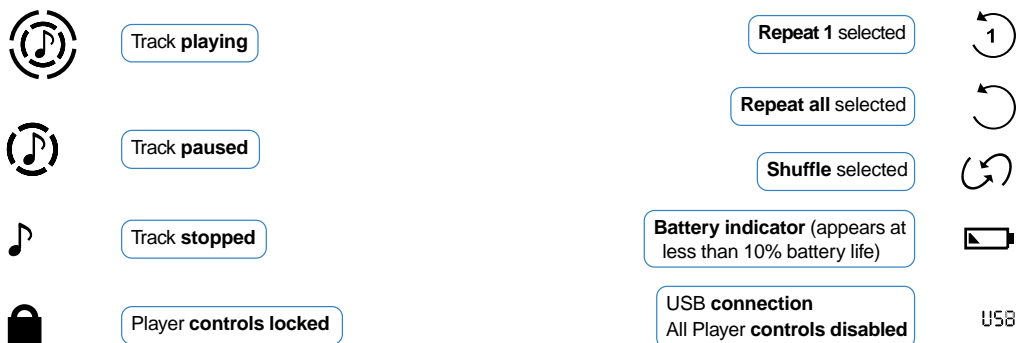
Use the Intel Audio Manager to:

- search your computer and create your own digital music library.
- automatically generate playlists by artist, album, or genre.
- preview digital music on your computer before you transfer it to your Player.
- transfer your digital music to your Player's internal and external memory.

Note: To rip and encode digital music from your CD collection, refer to the included MusicMatch Jukebox online help.



Player Display



When you turn on your Player...

- The total memory on your Player (internal and external) appears briefly.
Note: External memory is part of the total memory only after it has been formatted by the Intel Audio Manager software.
- Then the total # of tracks and total play time appear briefly.
- Then the current track # and its total play time appear.
Note: When you turn off your Player in the middle of a song, it returns to your stopping point when you turn it on.

Troubleshooting

My Player's controls don't work

Ensure that the control lock switch is off. When the control lock switch is on, the lock icon appears in your Player's display. Slide the control lock switch down toward the battery door to access your Player's controls.

I can't find my Player in the Intel Audio Manager

Click Refresh in the Intel Audio Manager or disconnect and reconnect your Player's USB cable to verify the USB connection. To troubleshoot using your Player with the Intel Audio Manager, go to *Troubleshooting* in the Intel Audio Manager online help.

My Player is turned on, my batteries are fresh, but the display is blank

Your Player enters sleep mode after sitting idle for two minutes. To revive your Player, press the play button.

My Player does not turn on or my Player's display is frozen

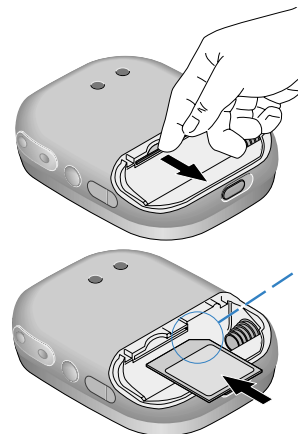
Verify that your battery has enough power or remove and replace your battery to reset your Player.

I installed a MultiMediaCard (MMC) in my Player and I can't play the songs on it

Your Intel Personal Audio Player 3000 plays only MMCs formatted by the Intel Audio Manager.

With the MMC in your Player, connect your Player to your computer and launch the Intel Audio Manager to automatically format your MMC to work with your Player.

Doing More with Your Player



INSTALL A MULTIMEDIA CARD (MMC) TO UPGRADE YOUR PLAYER

- Remove the battery as directed in *Installing and Changing the Battery*.
Note: Always disconnect your Player from its USB cable before you insert or remove an MMC.
- If an MMC is installed, use your fingernail or a small coin to carefully pull the MMC away from the bottom of your Player.
- With the MMC oriented as shown, insert it into the memory slot and push it into place until it stops flush with the battery compartment.
- Insert a battery oriented as shown in *Installing and Changing the Battery*.

Note: For best results, refer to the list of recommended MMC vendors at support.intel.com/support/peripherals/audioplayer/mmclist.htm

CHANGE THE FACEPLATE INSERT TO CUSTOMIZE YOUR PLAYER

- Slide the faceplate release tab toward the control lock switch and lift the faceplate away from your Player.
- If a faceplate insert is installed, remove it.
- Align the new faceplate insert so that your Player's display is fully visible.

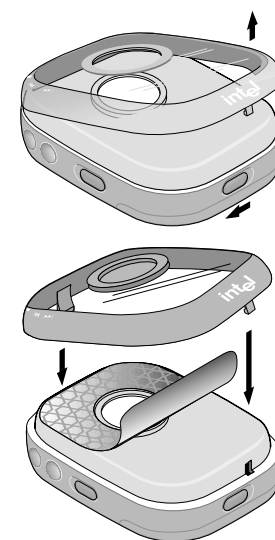
To attach the Faceplate

- Insert the top tab of the faceplate into the notch at the top of your Player.
- Rotate the faceplate down.
- Insert the tab at the bottom of the faceplate into the notch at the bottom of your Player until it clicks.

Note: To create your own faceplate inserts, go to:

Start > Programs > Intel Personal Audio Player 3000 > Intel FacePlate Designer.

Note: Several sample faceplate inserts are installed into the folder, *Intel Faceplate Designer Samples* in your computer's *My Documents* folder.



INTEL AUDIO PLAYERS AND PROTECTED CONTENT

The Intel Personal Audio Player 3000 supports Windows Media® Digital Rights Management (DRM). DRM protected music content includes usage rules that may limit a song from being copied to or used on multiple audio players as well as the number of times that it can be copied to a single audio player or played on your computer. For more information on DRM content, refer to the Intel Audio Manager online help or your content provider.

Technical Information

SYSTEM REQUIREMENTS

The Intel Personal Audio Player 3000 and Intel Audio Manager require:

- Microsoft Windows* 98, Windows 98SE, Windows Me, Windows 2000, or Windows XP
Note: Windows 2000 and Windows XP require Administrator Privileges for hardware installation.
- 200MHz Intel® Pentium® processor or faster
- Available powered USB port
- 4x or faster CD-ROM drive
- 800x600 screen resolution or better w/16-bit color
- 32MB of RAM (64MB recommended)
- 53MB minimum free hard disk space
 - 11MB - Intel Audio Manager; 22MB - Intel Audio Sampler Vol. 2 (optional); 20MB - MusicMatch Jukebox (optional)

PRODUCT SPECIFICATIONS

Dimensions	83 mm x 64 mm x 38 mm (with belt clip)
Weight	83.4 g (with belt clip and without battery)
Battery type / life	1 AA - alkaline or NiMH (alkaline recommended for maximum play time of up to 10 hours) When your Player is going to sit idle for an extended period of time, remove the battery.
Memory (internal)	64MB Intel® Strataflash™
Memory (external)	MultiMediaCard (MMC) expansion slot See MMC vendors at www.support.intel.com/support/peripherals/audioplayer/mmclist.htm .
Audio Codec support	MP3* and WMA* (including Windows Media* DRM protected music content)
Frequency response	20 Hz to 20 kHz
Maximum output	6.5 mW @ < 0.1% total harmonic distortion + noise
Signal-to-Noise Ratio	> 90 dB
Bass and Treble Boost	12 step controls

ONLINE HELP

For further details on the features and capabilities of the Intel Audio Manager software, consult the online Help at:
Start > Programs > Intel Personal Audio Player 3000 > Support and Documentation > Audio Manager Help

CUSTOMER SUPPORT

For assistance with MusicMatch Jukebox refer to the MusicMatch Jukebox online help.

For assistance with the Player or the Intel Audio Manager software:

- *click Start > Programs > Intel Personal Audio Player 3000 > Support and Documentation > Customer Support*
or
- call Intel Customer Support at
 - North America (916) 377-7000
 - United Kingdom +44 (0) 870 607 2439

Note: Your Player's serial number is on your Player, under the battery cover, just below the battery.

Player Controls

Stop / off button

Press to stop track
Press and hold to turn off Player

Play / pause button

Press to turn on Player
Press to start or pause track

Fast forward button

Press to jump to next track
Press and hold to scan forward in current track

Headphone jack

Connects earbuds to Player

Rewind button

Press to jump to previous track
Press and hold to scan backward in current track

Control lock switch

Slide up toward rewind button to lock all controls

Up button

Press to increase volume, bass, or treble

Belt clip mounting guides

Insert belt clip tab and included mounting screw

Down button

Press to decrease volume, bass, or treble

Mode button

Press to change repeat and shuffle modes
Press and hold to access bass adjust (then press to change between bass and treble)

Battery door

Holds one AA battery
Holds one MultiMediaCard

USB cable port

Peel open to connect the small end of the included USB cable

Faceplate release tab

Slide toward the control lock switch to release Faceplate

Using Your Player

GETTING STARTED WITH YOUR PLAYER

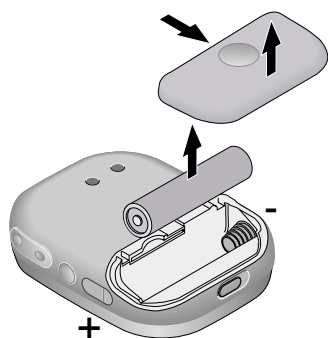
Note: Install the included software before connecting your Player to a powered USB port on your computer.

Your Player has a pre-loaded Welcome Track to introduce you to the Player and a song sampler for you to immediately enjoy the Intel digital music experience.

With a battery installed and your ear buds connected:

1. Turn on your Player by pressing the play / pause button.
2. Press the play / pause button to start the Welcome Track, track 1.

Refer to the *Player Controls* and *Player Display* pages in this guide to familiarize yourself with your Player's functionality.



INSTALLING AND CHANGING THE BATTERY

A single AA alkaline battery powers your Player for up to 10 hours of high quality digital sound. For best results, replace the battery only with the same or equivalent type.

Note: Do not remove the battery while your Player is connected to USB.

Note: Always remove the battery when inserting or removing a MultiMediaCard.

1. Press the indentation on the battery cover and slide it away from your Player.
2. If a battery is installed, remove it and dispose of it as instructed by the battery manufacturer.
3. Insert a new battery oriented as shown.
4. Replace the battery cover.

REMOVING AND ATTACHING THE BELT CLIP

Use the included belt clip to easily take your Player with you.

Removing the Belt Clip

1. Loosen the mounting screw until the belt clip releases from your Player.
2. Keep the mounting screw attached to the belt clip for future use.

Attaching the Belt Clip

1. Attach the belt clip to the back of your Player with the clip running down the back of your Player as shown.
Use the guide tab for proper alignment.
2. Tighten the included screw to secure the belt clip to your Player.



QUICK TIPS FOR YOUR PLAYER

- Your Player enters sleep mode when left idle, a song not playing and no buttons pressed, for two minutes.
- After you access the bass and treble settings with the Mode button, use the "+" and "-" buttons to adjust them.
Your Player exits EQ mode automatically after a few seconds.
- You can transfer a single song to the internal memory or the external memory, but not across both.

Using Your Player Safely

VOLUME LEVEL

To establish a safe listening volume, first set the **volume control** on your Intel Personal Audio Player 3000 to the lowest audible level (indicated by "01" in the volume indicator). Then slowly increase the volume until you can hear it comfortably, clearly, and without distortion. Once you have set the volume level, leave it there for comfortable listening.

WARNING: Using the Player at a volume higher than a comfortable sound level may lead to temporary or permanent hearing loss. Follow the volume level recommendations above to avoid exposure to excessive sound levels. Note that your comfortable sound level may be higher than normal due to surrounding noise levels. To avoid risk of hearing loss, use the Player at the comfortable sound level that you established in quiet surroundings at all times.

OPERATING VEHICLES

Do not use your Player and ear buds while operating a motorized vehicle or riding a bicycle.

ELECTRICAL SAFETY

Use caution when using your Player in any damp or wet environments as water leakage into the Player may cause failure.

WARNING: To prevent fire or shock hazard, do not expose this equipment to rain or moisture.

NOTICES AND WARRANTY INFORMATION

For information about warranties, copyrights and trademarks, disclaimers, FCC compliance, liability, and battery disposal, consult the *Intel Personal Audio Player 3000 Information* document at:

Start > Programs > Intel Personal Audio Player 3000 > Support and Documentation > Audio Player Information

BATTERIES

Replace batteries only with the same or equivalent type. Dispose of batteries according to manufacturer's instructions.

MUSICMATCH JUKEBOX UPGRADE KEY

© 2001 Intel Corporation All rights reserved.
Intel is a registered trademark of Intel Corporation or its subsidiaries in the United States and other countries.
*Other names and brands may be claimed as property of others.



A63834-001