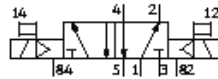
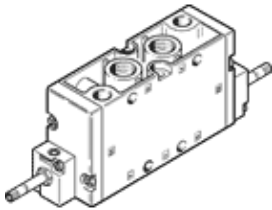


Solenoid valve JMFH-5-3/8-B

FESTO



Solenoid valve With manual overrides, without solenoid coils or sockets. Solenoid coils and sockets should be ordered separately.

Festo's Tiger 2000 valve series has proven itself millions of times - it's robust and reliable, even under extreme conditions. A valve for many applications, and a comprehensive range of options.

Flow rate

- G1/8: 750 and 1000 l/min
- G1/4: 1300 and 1600 l/min.
- G3/8: 2000 l/min.

Voltages

JMVH, MVH: with solenoid coil without plug socket (V solenoid coil)

- 24 V DC
- Port pattern per DIN 43 650 type B

JMFH, MFH: without solenoid coil and plug socket (F solenoid coil)

- 12 ... 48 V DC
- 24 ... 240 V AC/50 ... 60 Hz
- Explosion protection

- In-line valves
- Electrically and pneumatically actuated valves
- Manual override-
- With or without auxiliary pilot air connection

Variants

5/2-way valves

- Single solenoid with mechanical or pneumatic spring return
- Double solenoid valves

5/3-way valves

- B: Mid-position pressurised
- E: Mid-position exhausted
- G: Mid-position closed

Features

- Poppet valve for single solenoid functions or piston spool for pneumatic spring return, as well as 5/3-way valves
- Mounting from the front with 2 screws
- Voltage selection with F solenoid coil, or V solenoid coil with minimal power consumption
- Closed housing front panel
- Manifold mounting for 2 to 10 valve positions to P manifold strip or PRS manifold block
- Creation of pressure zones with PRS manifold and PRSV separator plugs

Manual override tool, detenting, with actuator attachment AHB-MD/MF/MV for solenoid valves with F coil

Manifold assembly

- Mounting strip PAL-...-B for 2 to 10 valve positions
- Blanking plate PALB-...-B for blanking vacant positions
- Manifold block PRS-...-2-BB/B for 2 to 10 valve positions
- Blanking plate PRSB-...-B for blanking vacant positions
- Blanking plug PRSV-... for creating pressure zones

