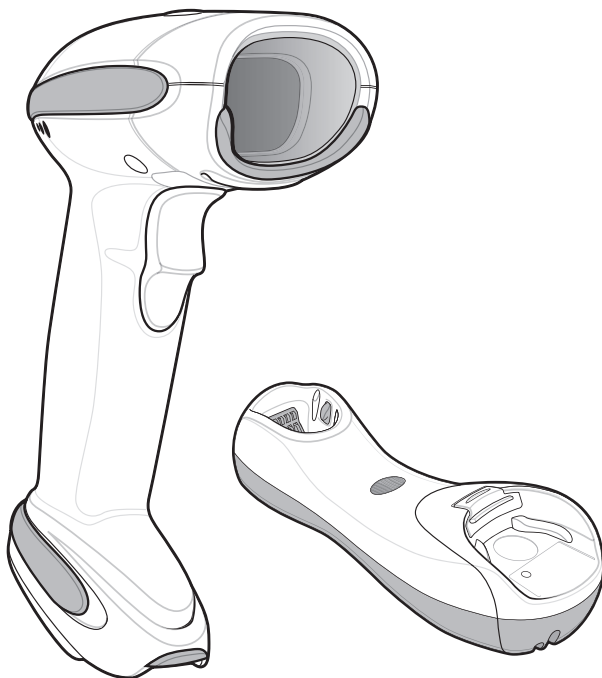


# **LS4278**

## *Quick Reference Guide*



***symbol***<sup>®</sup>  
The Enterprise Mobility Company<sup>™</sup>

## LS4278 Quick Reference Guide

© 2005 SYMBOL TECHNOLOGIES, INC. All rights reserved.

Symbol reserves the right to make changes to any product to improve reliability, function, or design. Symbol does not assume any product liability arising out of, or in connection with, the application or use of any product, circuit, or application described herein.

No license is granted, either expressly or by implication, estoppel, or otherwise under any patent right or patent, covering or relating to any combination, system, apparatus, machine, material, method, or process in which Symbol products might be used. An implied license only exists for equipment, circuits, and subsystems contained in Symbol products.

Symbol and the Symbol logo are registered trademarks of Symbol Technologies, Inc. Other product names mentioned in this manual may be trademarks or registered trademarks of their respective companies and are hereby acknowledged.

Symbol Technologies, Inc.  
One Symbol Plaza  
Holtville, N.Y. 11742-1300  
<http://www.symbol.com>

### Patents

This product is covered by one or more of the patents listed on the website:  
[www.symbol.com/patents](http://www.symbol.com/patents).

### Warranty

Subject to the terms of Symbol's hardware warranty statement, the LS 4278 hand held scanner products are warranted against defects in workmanship and materials for a period of three years from the date of shipment. The Liquid Polymer scan element includes an unprecedented limited lifetime warranty.

For the complete Symbol hardware product warranty statement, go to:  
<http://www.symbol.com/warranty>.

### Translated Guides

Pour consulter la version traduite de ce guide, reportez-vous au CD du LS4278 ou visitez le site Web ci-dessous

Per ottenere una versione tradotta della presente guida, consultare il CD LS4278 oppure visitare il sito Web riportato sotto.

Die übersetzte Version dieser Kurzübersicht finden Sie auf der CD-ROM zum LS4278 oder auf der folgenden Website.

Podrá encontrar la versión traducida de esta guía en el CD del LS4278 o bien en la siguiente página Web.

Para obter uma versão traduzida deste guia, consulte o CD do LS4278 ou visite o site abaixo.

各国語版のガイドについては、LS4278 CD を参照するか、以下の Web サイトにアクセスしてください。

有关本指南的译文版本，请参见 LS4278 CD 或访问以下网站。

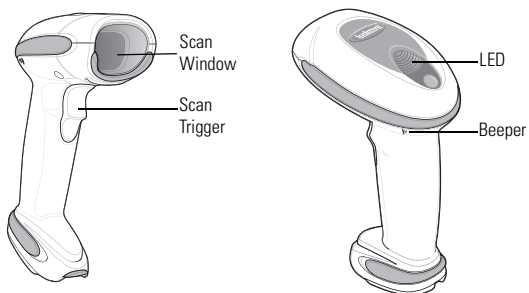
본 설명서의 번역본은 LS4278 CD 또는 아래 주소의 웹 사이트에서 확인할 수 있습니다.

<http://www.symbol.com/manuals>.

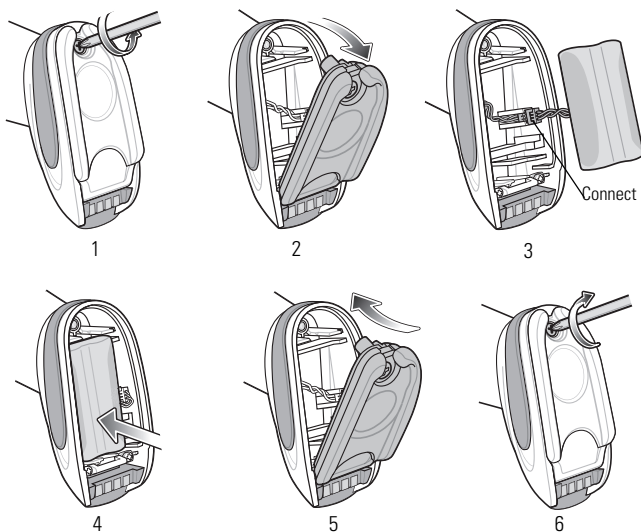
## Introduction

The LS4278 scanner combines excellent scanning performance and advanced ergonomics to provide the best value in a lightweight laser scanner. Whether used as a hand-held scanner or in hands-free mode in a stand, the scanner ensures comfort and ease of use for extended periods of time. Before programming the scanner, scan the appropriate bar code(s), beginning on [page 6](#), to communicate with the host.

## Parts

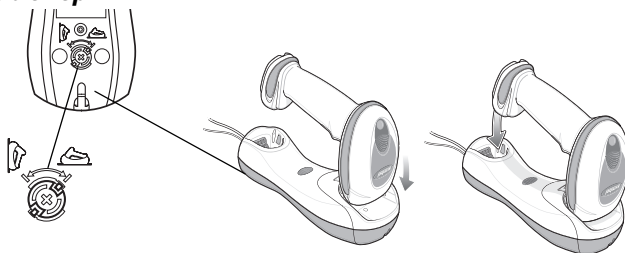


## Battery Insertion/Removal

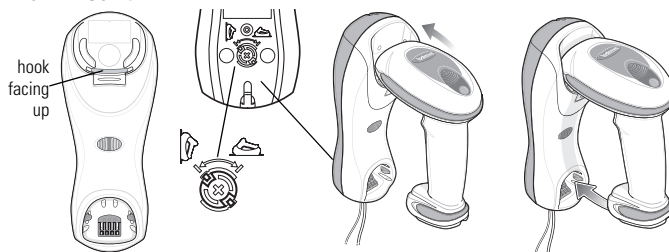


## Scanner Insertion in Cradle

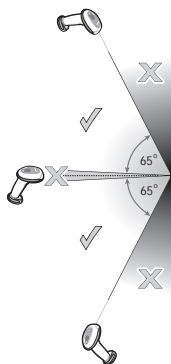
### Table Top



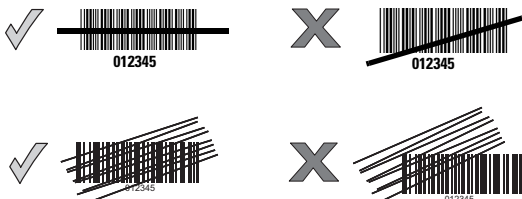
### Wall Mount



## Aiming



## Scanning



## Beeper Definitions

The scanner issues different beep sequences and patterns to indicate status. The table below defines beep sequences that occur during both normal scanning and while programming the scanner.

Beeper Sequence	Indication
<b>Standard Use</b>	
Low/medium/high beeps	Power up.
High beep	A bar code symbol was decoded (if decode beeper is enabled).
Four long low beeps	A transmission error was detected in a scanned symbol. The data is ignored. This occurs if a unit is not properly configured. Check option setting.
Five low long beeps	Conversion or format error.
Low/high/low beeps	ADF transmit error.
High/high/high/low beeps	RS-232 receive error.
<b>Parameter Menu Scanning</b>	
Long low/long high beeps	Input error, incorrect bar code or "Cancel" scanned, wrong entry, incorrect bar code programming sequence; remain in program mode.
High/low beeps	Keyboard parameter selected. Enter value using bar code keypad.
High/low/high/low beeps	Successful program exit with change in the parameter setting.
Long low/long high/long low/long high beeps	Out of host parameter storage space. Scan <a href="#">Set Defaults on page 6</a> .
<b>Wireless Operation</b>	
High/low/high/low beeps	Pairing bar code scanned.

## 4 LS4278 Quick Reference Guide

Beeper Sequence	Indication
Low/high beeps	Bluetooth connection established.
High/low beeps	Bluetooth disconnection event.
Long low/long high beeps	Page timeout; remote device is out of range/not powered.
Long low/long high/long low/long high beeps	Connection attempt was rejected by remote device.
<b>Code 39 Buffering</b>	
High/low beeps	New Code 39 data was entered into the buffer.
Three long high beep	Code 39 buffer is full.
Low/high/low beeps	The Code 39 buffer was erased or there was an attempt to clear or transmit an empty buffer.
Low/high beeps	A successful transmission of buffered data.
<b>Host Specific</b>	
<b>USB only</b>	
Four high beeps	Scanner has not completed initialization. Wait several seconds and scan again.
Scanner gives a power-up beep after scanning a USB Device Type.	Communication with the bus must be established before the scanner can operate at the highest power level.
This power-up beep occurs more than once.	The USB bus may put the scanner in a state where power to the scanner is cycled on and off more than once. This is normal and usually happens when the host PC cold boots.
<b>RS-232 only</b>	
High beep	A <BEL> character is received and Beep on <BEL> is enabled.

## LED Definitions

In addition to beeper sequences, the scanner communicates with the user using a two-color LED display. The table below defines LED colors that display during scanning and charging.

Scanning LED	Indication
Green Flash	A bar code was successfully decoded.
<b>Charging LED</b>	
Green - Slow Continuous Flash	Non-critical battery temperature fault.

Green - Fast Continuous Flash	Scanner is charging.
Green - Solid	Scanner is fully charged.
Amber - Continuous Flash	Critical battery temperature fault.

## Troubleshooting

Problem	Possible Cause	Possible Solutions
LED indicates a battery temperature fault.	Battery is above or below normal operating temperature.	Do not use the scanner. Move the scanner to a location within normal operating temperature. The scanner can remain in the cradle while the battery warms or cools to normal operating temperature. Refer to the <i>Product Reference Guide</i> for more information.
Nothing happens when the trigger is pulled.	No power to the scanner.	Battery may be discharged; charge scanner in cradle. Check that battery door is closed Ensure that end cap to battery chamber is secured.
	Scanner is disabled.	Some host interfaces (e.g., Synapse, IBM-468x) can disable the scanner. If this applies, enable the scanner via the host interface.
Laser comes on, but symbol does not decode.	Scanner is not programmed for the correct bar code type.	Ensure the scanner is programmed to read the type of bar code scanned. Refer to the <i>Product Reference Guide</i> for more information.
	Bar code symbol is unreadable.	Check the symbol to ensure it is not defaced. Try scanning test symbols of the same bar code type.
	Distance between scanner and bar code is incorrect.	Move the scanner closer to or further from the bar code.
Symbol is decoded but not transmitted to the host.	Cradle is not programmed for the correct host interface.	Check scanner host parameters or edit options.
	Scanner not paired to host-connected interface.	Pair the scanner to the cradle (using PAIR bar code on the cradle).
	Interface cable is loose.	Ensure all cable connections are secure.
	Cradle has lost connection to host.	<i>In this exact order:</i> disconnect power supply; disconnect host cable; wait three seconds; reconnect host cable; reconnect power supply; reestablish pairing.

## 6 LS4278 Quick Reference Guide

Problem	Possible Cause	Possible Solutions
Scanned data is incorrectly displayed on the host.	Scanner is not programmed to work with the host.	Ensure proper host is selected. Check the scanner's host type parameters or editing options. <ul style="list-style-type: none"><li>For RS-232, ensure the scanner's communication parameters match the host's settings.</li><li>For a keyboard wedge configuration, ensure the system is programmed for the correct keyboard type, and the CAPS LOCK key is off.</li></ul> Ensure editing options (e.g., UPC-E to UPC-A conversion) are properly programmed. Refer to the <i>Product Reference Guide</i> for more information.

### Programming Bar Codes

Following are some frequently used programming bar codes.

Note: For additional host types, refer to the *LS4278 Product Reference Guide*, p/n 72E-69834-xx, available on the LS4278 CD, or on the Symbol website:  
<http://www.symbol.com/manuals>.

#### Set Defaults

Scan **SET DEFAULTS** to set all parameters to their default values.



SET DEFAULTS

#### Scanning Modes

Scan the appropriate bar code below to determine the scanning pattern.

- **SINGLE LINE ONLY** - No up and down scan line movement (no raster).
- **MULTI-LINE SMART RASTER** - The scan line begins as a single line and moves up and down (rasters) when a partial scan of a bar code is detected, or no bar code is decoded 500 ms after the trigger is pulled.
- **MULTI-LINE ALWAYS RASTER** (default) - Rastering (up and down scan line movement) begins immediately.



SINGLE LINE ONLY



### ***Scanning Modes (continued)***



**MULTI-LINE SMART RASTER**



**MULTI-LINE ALWAYS RASTER (Default)**

### ***Host Types***

If a Synapse cable is used (i.e., part number STlxx-xxxx), the scanner autodetects the Synapse cable and there is no need to scan bar codes to enable the Synapse host.

If a USB interface is used, the scanner autodetects the USB and defaults to the HID keyboard interface. See [page 11](#) to select the IBM hand-held host type.

If a Keyboard Wedge, RS-232, Wand Emulation, Scanner Emulation, or IBM 46XX is used, the appropriate host type must be scanned. Select the appropriate host type from the bar codes that follow.

#### **Keyboard Wedge Host Type**



**IBM PC/AT and IBM PC COMPATIBLES**

## 8 *LS4278 Quick Reference Guide*

### ***Country Keyboard Types (Country Codes)***



**NORTH AMERICAN (Default)**



**FRENCH Windows**



**FRENCH CANADIAN Windows 95/98**



**FRENCH CANADIAN Windows XP/2000**



**GERMAN Windows**



**SPANISH Windows**



**ITALIAN Windows**

***Country Keyboard Types (Country Codes- continued)*****SWEDISH Windows****UK ENGLISH Windows****JAPANESE Windows****PORTUGUESE-BRAZILIAN Windows**

## RS-232 Host Types



STANDARD RS-232



ICL RS-232



NIXDORF RS-232 MODE A



NIXDORF RS-232 MODE B



FUJITSU RS-232



OPOS/JPOS

## USB Host Types



HID KEYBOARD EMULATION



IBM HAND-HELD USB

### IBM 46XX Host Types



PORT 5B



PORT 9B

### Wand Emulation Host Type



SYMBOL WAND

Many Wand hosts require input as Code 39 data. Scan the following bar codes to enable or disable transmission of data to the Wand host as Code 39 data.



ENABLE CONVERT TO CODE 39 FOR WAND HOST



DISABLE CONVERT TO CODE 39 FOR WAND HOST (Default)

### Scanner Emulation Host Type

Scan the bar code below to enable the Scanner Emulation host.



ENABLE SCANNER EMULATION HOST

### Radio Communications Host Types

Scan a bar code below to choose how the scanner connects to a remote device. Scan

**Cradle Host** if connecting to the STB4278 cradle.



CRADLE HOST



SERIAL PORT PROFILE (MASTER)



SERIAL PORT PROFILE (SLAVE)



HID PROFILE (MASTER)



HID PROFILE (SLAVE)

### Pairing

When the scanner is configured as an SPP or HID Master, a 'pairing bar code' must be created for the remote Bluetooth device to which the scanner can connect. The Bluetooth address of the remote device must be known. Pairing bar codes are Code 128 bar codes. The format is: <Fnc 3>Bxxxxxxxxxxxx (where xxxxxxxxxxxx represents the 12-character Bluetooth address).

#### Pairing Modes

When operating with the cradle, two modes of pairing are supported:

- **Locked Pairing Mode** - When a cradle is paired (connected) to the scanner, any attempt to connect to a different scanner, by scanning the pairing bar code on the cradle or by inserting it into the cradle with **Pairing on Contacts** enabled, is rejected. The currently connected scanner maintains its connection.
- **Unlocked Pairing Mode** - A new scanner can be paired (connected) to a cradle at any time by scanning the pairing bar code on the cradle or by inserting it into the cradle with **Pairing On Contacts** enabled. The original scanner is disconnected from the cradle in favor of the new one.

Note: **Unlocked Pairing Mode** is supported in single Point-to-Point mode only. Refer to the *Product Reference Guide* for more information.



UNLOCKED PAIRING MODE (Default)



LOCKED PAIRING MODE

### Pairing Methods

There are two pairing methods. The default method pairs (connects) the scanner and cradle when the pairing bar code on the cradle is scanned. A second method pairs the scanner and cradle when the scanner is inserted in the cradle. To enable this feature, scan **Enable Pair On Contacts** below. With this feature enabled it is not necessary to scan the pairing bar code on the cradle. If the pairing is successful, a low/high connection beep sequence sounds a few seconds after the scanner is placed in the cradle.



ENABLE PAIR ON CONTACTS



DISABLE PAIR ON CONTACTS (Default)

### Carriage Return/Line Feed

To append a carriage return/line feed to all transmitted data, scan the following bar codes in the order shown. To cancel this operation, the **SET DEFAULTS** bar code on [page 6](#), or refer to the *Product Reference Guide*.



SCAN OPTIONS



<DATA><SUFFIX>



ENTER

## 14 LS4278 Quick Reference Guide

### Ergonomic Recommendations

**Caution:** In order to avoid or minimize the potential risk of ergonomic injury follow the recommendations below. Consult with your local Health & Safety Manager to ensure that you are adhering to your company's safety programs to prevent employee injury.

- Reduce or eliminate repetitive motion
- Maintain a natural/neutral position
- Reduce or eliminate excessive force
- Keep objects that are used frequently within easy reach
- Perform tasks at correct heights
- Reduce or eliminate vibration
- Reduce or eliminate direct pressure
- Provide adjustable workstations
- Provide adequate clearance
- Provide a suitable working environment
- Improve work procedures.

### Regulatory Information

All Symbol devices are designed to be compliant with rules and regulations in locations they are sold and will be labeled as required. Any changes or modifications to Symbol Technologies equipment, not expressly approved by Symbol Technologies, could void the user's authority to operate the equipment.

Regulatory Information is available in French, Italian, German, Spanish (Spain), Portuguese, Japanese, Korean, and Simplified Chinese. Please see Web site:

<http://www.symbol.com/manuals> and look for your specific product.

#### Country Approval

Regulatory markings are applied to the device signifying the radio (s) are approved for use in the following countries: United States, Canada, Australia, Japan & Europe1.

Please refer to the Symbol Declaration of Conformity (DoC) for details of other country markings. This is available at <http://www2.symbol.com/doc/>.

**Note:** For 2.4GHz Products: Europe includes, Austria, Belgium, Czech Republic, Croatia, Cyprus, Denmark, Estonia, Finland, France, Germany, Greece, Hungary, Iceland, Ireland, Italy, Latvia, Liechtenstein, Lithuania, Luxembourg, Malta, Netherlands, Norway, Poland, Portugal, Slovak Republic, Slovenia, Spain, Sweden, Switzerland and the United Kingdom.

#### Radio Modules

The LS4278 Scanners contain an approved radio module. This module is the Symbol Bluetooth radio Type: LMX5452.

#### Bluetooth Devices

This product is an approved Bluetooth device. BT ID: BTXXXXX.

Operation of the device without regulatory approval is illegal.



#### Power Supply

Use only a Symbol-approved power supply (p/n 50-14000-008, 50-14000-009 or 50-14000-010) output rated 5 VDVC and minimum 650mA. The power supply is certified to EN60950 with SELV outputs. Use of alternative power supply will invalidate any approval given to this device and may be dangerous.

Benutzen Sie nur eine Symbol Technologies genehmigt Stromversorgung (p/n 50-14000-008, 50-14000-009, 50-14000-010) in den Ausgabe: 5 VDVC und minimum 650mA. Die Stromversorgung ist bescheinigt nach EN60950 mit SELV Ausgaben. Bei Verwendung eines anderen Netzteils werden alle für das Gerät gewährten Genehmigungen außer Kraft gesetzt, und der Betrieb kann gefährlich sein.



#### FCC / EU RF Exposure Guidelines

#### Safety Information

The device complies with Internationally recognised standards covering Specific Absorption Rate (SAR) related to human exposure to electromagnetic fields from radio devices.



## Reducing RF Exposure – Use Properly

It is advisable to use the device only in the normal operating position.

### Hand Held Devices:

To comply with FCC RF exposure requirements, this device must be operated in the hand. Other operating configurations should be avoided.

## Radio Frequency Interference Requirements



### Radio Transmitters (Part 15)

This device complies with Part 15 of the FCC Rules. Operation is subject to the following two conditions: (1) this device may not cause harmful interference, and (2) this device must accept any interference received, including interference that may cause undesired operation.

## Radio Frequency Interference Requirements - Canada

### Radio Transmitters

This device complies with RSS 210 of Industry & Science Canada. Operation is subject to the following two conditions: (1) this device may not cause harmful interference and (2) this device must accept any interference received, including interference that may cause undesired operation.

Label Marking: The Term "IC:" before the radio certification only signifies that Industry Canada technical specifications were met.



## Marking and European Economic Area (EEA)

Bluetooth for use through the EEA have the following restrictions:

- Maximum radiated transmit power of 10mW EIRP in the frequency range 2.400 - 2.4835 GHz
- Belgium outside usage, the equipment is restricted to 2.460 - 2.4835 GHz frequency range
- Italy requires a user license for outside usage.

## Statement of Compliance

Symbol Technologies, Inc., hereby, declares that this device is in compliance with the essential requirements and other relevant provisions of Directives 1999/5/EC, 89/336/EEC and 73/23/EEC. Declaration of Conformities may be obtained from <http://www2.symbol.com/doc/>.

## Laser Labels



In accordance with Clause 5, IEC 825 and EN60825, the following information is provided to the user:

### ENGLISH

CLASS 1 CLASS 2  
LASER LIGHT  
DO NOT STARE INTO BEAM  
CLASS 2 LASER PRODUCT

### DANISH / DANSK

KLASSE 1 KLASSE 1 LASERPRODUKT  
KLASSE 2 LASERLYF  
KLASSE 2 LASERPRODUKT

### DUTCH / NEDERLANDS

KLASSE 1 KLASSE-1 LASERPRODUKT  
KLASSE 2 LASERLICHT  
NIET IN STRAAL STAREN LASERPRODUKT,  
KLASSE-2 LASERPRODUKT

### FINNISH / SUOMI

LUOKKA 1 LUOKKA 1 LASERTUOTE  
LUOKKA 2 LASERVALO  
ÄLÄ TUUJOTA SÄDETTÄ  
LUOKKA 2 LASERTUOTE

### HEBREW

מוצר לייזר רמה 1 רמה 1  
אור לייזר רמה 2  
אין להביט אל תוך הזרם  
מוצר לייזר רמה 2

### ITALIAN / ITALIANO

CLASSE 1 PRODOTTO AL LASER DI CLASSE 1  
CLASSE 2 LUCE LASER  
SE IKKE IND I STRÅLENNON FISSARE IL RAGGIOPRODOTTO

### AL LASER DI CLASSE 2

### NORWEGIAN / NORSK

KLASSE 1 LASERPRODUKT KLASSE 1  
KLASSE 2 LASERLYS IKKE STIRR INN I LYSSTRÅLEN  
LASERPRODUKT, KLASSE 2

### PORTUGUESE / PORTUGUÊS

CLASSE 1 PRODUTO LASER DA CLASSE 1  
CLASSE 2 LUZ DE LASER NÃO FIXAR O RAO LUMINOSO  
PRODUTO LASER DA CLASSE 2

## 16 LS4278 Quick Reference Guide

### FRENCH / FRANÇAIS

CLASSE 1 PRODUIT LASER DE CLASSE 1  
CLASSE 2 LUMIÈRE LASER  
NE PAS REGARDER LE RAYON FIXEMENT  
PRODUIT LASER DE CLASSE 2

### GERMAN / DEUTSCH

KLASSE 1 LASERPRODUKT DER KLASSE 1  
KLASSE 2 LASERSTRAHLEN  
NICHT DIREKT IN DEN LASERSTRAHL SCHAUEN  
LASERPRODUKT DER KLASSE 2

### CHINESE / 简体中文

1 类 1 类激光产品  
2 类 激光  
切勿注视光束  
2 类激光产品

### KOREAN / 한국어

1등급 1등급 레이저 제품  
레이저 광선  
2등급 이 광선을 주시하지 마십시오.  
2등급 레이저 제품

### SPANISH / ESPAÑOL

CLASE 1 PRODUCTO LASER DE LA CLASE 1  
CLASE 2 LUZ LASER  
NO MIRE FLUJAMENTE EL HAZ  
PRODUIT LASER DE CLASSE 2

### SWEDISH / SVENSKA

KLASS 1 LASERPRODUKT KLASS 1  
KLASS 2 LASERLJUS STRÅL INTE MOT STRÅLEN  
LASERPRODUKT KLASS 2

### JAPANESE / 日本語

クラス1 クラス1 レーザ製品  
クラス2 レーザ光線  
光線を直視しないでください  
クラス2 レーザ製品

## Laser Devices



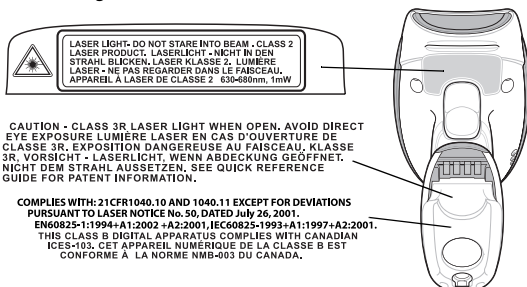
Complies with: 21CFR1040.10 and 1040.11 except for deviations pursuant to Laser Notice No. 50, dated July 26, 2001. EN60825-1:1994+A1:2002+A2:2001, IEC60825-1993+A1:1997+A2:2001.

Class 1 Laser devices are not considered to be hazardous when used for their intended purpose. The following statement is required to comply with US and international regulations:

**Caution:** Use of controls, adjustments or performance of procedures other than those specified herein may result in hazardous laser light exposure.

Class 2 laser scanners use a low power, visible light diode. As with any very bright light source, such as the sun, the user should avoid staring directly into the light beam. Momentary exposure to a Class 2 laser is not known to be harmful.

## Scanner Labeling



## Waste Electrical and Electronic Equipment (WEEE)

**English:** For EU Customers: All products at the end of their life must be returned to Symbol for recycling. For information on how to return product, please go to: [http://www.symbol.com/environmental\\_compliance](http://www.symbol.com/environmental_compliance).

**Čeština:** Pro zákazníky z EU: Všechny produkty je nutné po skončení jejich životnosti vrátit společnosti Symbol k recyklaci. Informace o způsobu vrácení produktu najdete na webové stránce: [http://www.symbol.com/environmental\\_compliance](http://www.symbol.com/environmental_compliance).

**Dansk:** Til kunder i EU: Alle produkter skal returneres til Symbol til recirkulering, når de er udtjent. Læs oplysningerne om returnering af produkter på: [http://www.symbol.com/environmental\\_compliance](http://www.symbol.com/environmental_compliance).

**Deutsch:** Für Kunden innerhalb der EU: Alle Produkte müssen am Ende ihrer Lebensdauer zum Recycling an Symbol zurückgesandt werden. Informationen zur Rücksendung von Produkten finden Sie unter [http://www.symbol.com/environmental\\_compliance](http://www.symbol.com/environmental_compliance).

**Eesti:** El klientidele: kõik tooted tuleb nende eluea lõppedes tagastada taaskasutamise eesmärgil Symbol'ile. Lisainformatsiooni saamiseks toote tagastamise kohta külastage palun aadressi: [http://www.symbol.com/environmental\\_compliance](http://www.symbol.com/environmental_compliance).

**Español:** Para clientes en la Unión Europea: todos los productos deberán entregarse a Symbol al final de su ciclo de vida para que sean reciclados. Si desea más información sobre cómo devolver un producto, visite: [http://www.symbol.com/environmental\\_compliance](http://www.symbol.com/environmental_compliance).

**Ελληνικά:** Για πελάτες στην Ε.Ε.: Όλα τα προϊόντα, στο τέλος της διάρκειας ζωής τους, πρέπει να επιστρέφονται στην Symbol για ανακύκλωση. Για περισσότερες πληροφορίες σχετικά με την επιστροφή ενός προϊόντος, επισκεφθείτε τη διεύθυνση [http://www.symbol.com/environmental\\_compliance](http://www.symbol.com/environmental_compliance) στο Διαδίκτυο.

**Français:** Clients de l'Union Européenne : Tous les produits en fin de cycle de vie doivent être retournés à Symbol pour recyclage. Pour de plus amples informations sur le retour de produits, consultez : [http://www.symbol.com/environmental\\_compliance](http://www.symbol.com/environmental_compliance).

**Italiano:** per i clienti dell'UE: tutti i prodotti che sono giunti al termine del rispettivo ciclo di vita devono essere restituiti a Symbol al fine di consentirne il riciclaggio. Per informazioni sulle modalità di restituzione, visitare il seguente sito Web: [http://www.symbol.com/environmental\\_compliance](http://www.symbol.com/environmental_compliance).

**Latviešu:** ES klientiem: visi produkti pēc to kalpošanas mūža beigām ir jānogādā atpakaļ Symbol otrreizējai pārstrādei. Lai iegūtu informāciju par produktu nogādāšanu Symbol, lūdzu, skatiet: [http://www.symbol.com/environmental\\_compliance](http://www.symbol.com/environmental_compliance).

**Lietuvių:** ES vartotojams: visi gaminiai, pasibaigus jų eksploatacijos laikui, turi būti grąžinti utilizuoti į kompaniją „Symbol“. Daugiau informacijos, kaip grąžinti gaminį, rasite: [http://www.symbol.com/environmental\\_compliance](http://www.symbol.com/environmental_compliance).

**Magyar:** Az EU-ban vásárlóknak: Minden tönkrement termékét a Symbol vállalathoz kell eljuttatni újrahasznosítás céljából. A termék visszajuttatásának módjával kapcsolatos tudnivalókat látogasson el a [http://www.symbol.com/environmental\\_compliance](http://www.symbol.com/environmental_compliance) weboldalra.

**Malti:** Għal klijenti fl-UE: il-prodotti kollha li jkunu waslu fl-aħħar tal-hajja ta' l-użu tagħhom, iridu jiġu rritornati għand Symbol għar-riċiklaġġ. Għal aktar tagħrif dwar kif għandek tirritorna l-prodott, jekk jogħġbok żur: [http://www.symbol.com/environmental\\_compliance](http://www.symbol.com/environmental_compliance).

**Nederlands:** Voor klanten in de EU: alle producten dienen aan het einde van hun levensduur naar Symbol te worden teruggezonden voor recycling. Raadpleeg [http://www.symbol.com/environmental\\_compliance](http://www.symbol.com/environmental_compliance) voor meer informatie over het terugzenden van producten.

**Polski:** Klienci z obszaru Unii Europejskiej: Produkty wycofane z eksploatacji należy zwrócić do firmy Symbol w celu ich utylizacji. Informacje na temat zwrotu produktów znajdują się na stronie internetowej [http://www.symbol.com/environmental\\_compliance](http://www.symbol.com/environmental_compliance).

**Português:** Para clientes da UE: todos os produtos no fim de vida devem ser devolvidos à Symbol para reciclagem. Para obter informações sobre como devolver o produto, visite: [http://www.symbol.com/environmental\\_compliance](http://www.symbol.com/environmental_compliance).

**Slovenski:** Za kupce v EU: vsi izdelki se morajo po poteku življenjske dobe vrniti podjetju Symbol za reciklažo. Za informacije o vračilu izdelka obiščite: [http://www.symbol.com/environmental\\_compliance](http://www.symbol.com/environmental_compliance).

**Slovenščina:** Pre zákazníkov z krajín EU: Všetky výrobky musia byť po uplynutí doby ich životnosti vrátené spoločnosti Symbol na recykláciu. Blížšie informácie o vrátení výrobkov nájdete na: [http://www.symbol.com/environmental\\_compliance](http://www.symbol.com/environmental_compliance).

**Suomi:** Asiakkaita Euroopan unionin alueella: Kaikki tuotteet on palautettava kierrätettäväksi Symbol-yhtiöön, kun tuotetta ei enää käytetä. Lisätietoja tuotteen palauttamisesta on osoitteessa [http://www.symbol.com/environmental\\_compliance](http://www.symbol.com/environmental_compliance).

**Svenska:** För kunder inom EU: Alla produkter som uppnått sin livslängd måste returneras till Symbol för återvinning. Information om hur du returnerar produkten finns på [http://www.symbol.com/environmental\\_compliance](http://www.symbol.com/environmental_compliance).

## Service Information

Before you use the unit, it must be configured to operate in your facility's network and run your applications.

If you have a problem running your unit or using your equipment, contact your facility's Technical or Systems Support. If there is a problem with the equipment, they will contact the Symbol Support Center::

United States	1-800-653-5350	Canada	905-629-7226
United Kingdom	0800 328 2424 (Inside UK) +44 118 945 7529 (Outside UK)	Asia/Pacific	337-6588 (Inside Singapore) +65-337-6588 (Outside Singapore)
Australia	1-800-672-906 (Inside Australia) +61-3-9866-6044 (Outside Australia)	Austria/Österreich	01-5055794-0 (Inside Austria) +43-1-5055794-0 (Outside Austria)
Denmark/Danmark	7020-1718 (Inside Denmark) +45-7020-1718 (Outside Denmark)	Finland/Suomi	9 5407 580 (Inside Finland) +358 9 5407 580 (Outside Finland)
France	01-40-96-52-21 (Inside France) +33-1-40-96-52-50 (Outside France)	Germany/ Deutschland	6074-49020 (Inside Germany) +49-6074-49020 (Outside Germany)
Italy/Italia	2-484441 (Inside Italy) +39-02-484441 (Outside Italy)	Mexico/México	5-520-1835 (Inside Mexico) +52-5-520-1835 (Outside Mexico)
Netherlands/ Nederland	315-271700 (Inside Netherlands) +31-315-271700 (Outside Netherlands)	Norway/Norge	+47 2232 4375
South Africa	11-809 5311 (Inside South Africa) +27-11-809 5311 (Outside South Africa)	Spain/España	+913244000 (Inside Spain) +34-9-1-320-39-09 (Outside Spain)
Sweden/Sverige	Switchboard: 08 445 29 00 (domestic) Call Center: +46 8 445 29 29 (international)	Europe/Mid-East Distributor Operations	Contact local distributor or call +44 118 945 7360
Latin America Sales Support	1-800-347-0178 (Inside United States) +1-561-483-1275 (Outside United States)		

For the latest version of this guide go to: <http://www.symbol.com/manuals>.



**72-69835-01**

**Revision A - October 2005**

Symbol Technologies, Inc.  
One Symbol Plaza  
Holtsville, N.Y. 11742-1300

<http://www.symbol.com>