

RS-3000

UTM Office Gateway

With growing the Internet technology, the security threat is also accompanied with the advantage development. Simple function gateway will not be powerful enough to protect the internal resource. Now the AirLive RS family offers you a new fully security solution in one device, RS-3000, administrator can simplify the installation of network environment, and utilize the budget as well to enrich the intranet construction design, to improve the work more efficiency.



Anti-Spam

Anti-Virus

Dual WAN

VPN

Policy

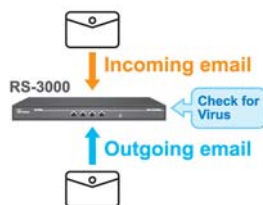
Schedule

Authentication

Content Filter

IDP

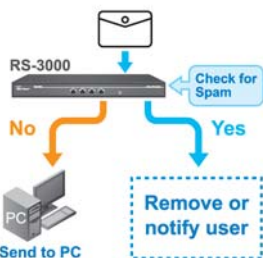
Anti-Virus



Anti-Virus for filtering Email

Embedded with Clam AV of Anti-Virus engine, the mail contents and attached file will be scanned for the virus before to be passed to recipient. The virus pattern can be checked for updated regularly, or administrator can also update the pattern manually. All the updated process is free of charge.

Anti-Spam



Anti-Spam for incoming Email

Embedded with fingerprint, Bayesian Anti-Spam systems, and ability to verify the valid sender account or address, the RS-3000 provides a powerful function to filter spam mail, and the simple managed page to facilitate the configuration.

Mail Training system

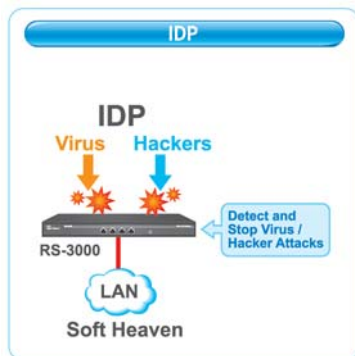
The spam mail or ham mail can be imported to RS-3000 in order to improve the rate of mail analysis.

Manufacturer

OvisLink Corp.

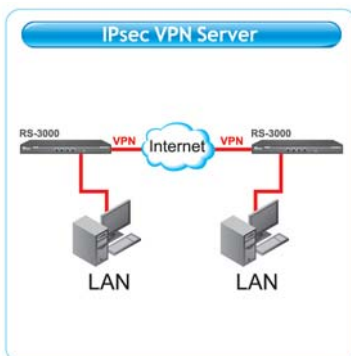
5F, No.96, Min-Chuan Rd, Hsin-tien City, Taipei, Taiwan

www.airlive.com



IDP

IDP (Intrusion Detection Prevention) system provides the ability to detect and block the Internet hacker's attack. The packets of Internet services (such as HTTP, FTP, P2P, IM...) can also be filtered by the Anti-Virus engine.

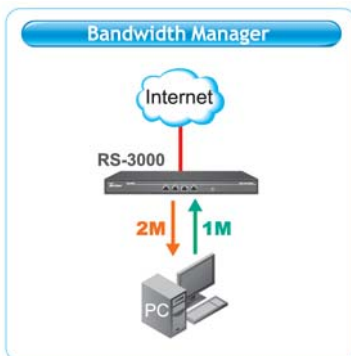


IPSec and PPTP VPN Servers

With VPN service, the branch office or Internet user will be able to access internal resource more easily and safely. Besides, the IPsec VPN trunk function offers a continual VPN connection between offices when the primary VPN tunnel is failed.

IM / P2P and Content Blocking

IM and P2P software can be managed the access right to prevent leaking out the information or confidential file. To restrict specific web address, web scripts, download and upload process can also protect information and prevent hacker attack.



QoS

Policy QoS and personal QoS are available in RS-3000. The difference between them is that Policy QoS can limit the bandwidth per specific user or service, but personal QoS will restrict the bandwidth to all the IP address with same bandwidth limitation. When administrator configures Policy QoS and personal QoS simultaneously, RS-3000 will restrict each personal useful bandwidth within the Policy QoS range..



User Authentication

Internal users must pass the authentication before to access Internet resource. The users' database can be stored at local device, RADIUS server or POP3 server.

WAN Load Balance

RS-3000 provides multiple load balance types to enrich the useful bandwidth and balance the multiple WAN connecting usages. The load balance types include Round-Robin, by Sessions and by Packets. Meanwhile, administrator can also select by Source IP or by Destination IP type of load balance mode, to prevent the disconnection because of the limitation of specific servers, such as banking system or Internet on-line game server, that are not allowed to be accessed by a computer with multiple IP addresses.

Server Load Balance

Within Virtual server function, RS-3000 allows a real IP address mapped to 4 private IP addresses. The balance mode works as Round-Robin.

Multiple Subnet

Multiple subnets are allowed to be configured simultaneously in LAN environment, if so, administrator can divide different subnet based on departments, and secure the information to be accessed by inhibited users.

Specifications

Hardware

- Processor: Intel IXP 425, 533MHz
- Memory: 16MB Flash, 128MB DRAM
- Power: 100 ~ 250 VAC
- Power consumption: 80 Watts
- Dimension: 440 x 237 x 43 mm

Interface

- LAN: 1 x 10/100 Base-T Ethernet RJ45 port
- WAN: 2 x 10/100 Base-T Ethernet RJ45 port
- DMZ: 1 x 10/100 Base-T Ethernet RJ45 port
- RS-232: DB-9 port for checking system or reset the factory default

Mail Security

- Anti-Virus for incoming email
- Anti-Spam for incoming email
- Mail Training system to improve the analysis rate
- License free to update virus pattern

IDP

- Anti-Virus for HTTP, FTP, IM, P2P...
- License free to update IDP signature
- Pre-defined and customize IDP signature

VPN

- IPSec VPN server
- Up to 50 IPSec VPN Tunnel
- IPSec VPN Trunk
- PPTP VPN Server
- PPTP VPN Client
- Policy based VPN

QoS

- Upstream and Downstream Bandwidth Control
- Define Guaranteed and Maximum Bandwidth
- Limit bandwidth by IP and/or by Application Service
- 3 tiers level of priority
- Personal QoS to limit the bandwidth per source IP

Authentication

- User Authentication based on Local database, RADIUS server or POP3 server
- Up to 100 local users

Content Blocking

- URL Blocking

- Java Scripts, ActiveX, Popup and Cookie Blocking
- Download or Upload Blocking by file type

IM/P2P Blocking

- IM Blocking: MSN, Yahoo Messenger, ICQ, QQ, Skype
- P2P Blocking: eDonkey, Bit Torrent, WinMX, Foxy, KuGoo, AppleJuice, AudioGalaxy, DirectConnect, iMesh, MUTE, Thunder5, VNN Client, PPLive
- Auto/manually updated definition for newest version software

Virtual Server

- Mapped IP
- Multi Virtual Server
- Server Load Balance

WAN Support

- PPPoE
- Dynamic IP
- Fixed IP

- PPTP
- Load Balance and Fail-over

LAN Support

- NAT mode
- Multiple Subnet

DMZ Support

- NAT mode and Transparent mode

Management and Maintenance

- Web-based management
- Firmware upgrade
- Export or import the config file

Environment Specification

- Operating Temperature: 0 ~ 60 °C
- Operating Humidity: 5% ~ 95%

Certification:

- CE, FCC

Ordering Information:

RS-3000 UTM Office Gateway