



Vestax Mixing Controller

# VMC-002XLu

**取扱説明書**

P.2~

**OWNER'S MANUAL**

P.9~

〒154-0023

東京都世田谷区若林1-18-6

電話 03-3412-7011 ファックス 03-3412-7013

Web : [www.vestax.com](http://www.vestax.com)

Vestax Corporation

1-18-6 Wakabayashi, Setagaya-ku, Tokyo 154-0023 Japan

Phone 03-3412-7011 Fax 03-3412-7013

Web : [www.vestax.com](http://www.vestax.com)

Vestax (Europe) Ltd.

Unit 5 Riverway Industrial Park Alton Hampshire GU34 2QL England, U.K.

Phone (0)1420-83000 Fax (0)1420-80040

Web : [www.vestax.co.uk](http://www.vestax.co.uk)

Vestax Europe Technical Support

Rheinstr.213 D-53332 Bornheim Germany

Phone 49(0)2222-95-23-72 Fax 49(0)2222-95-23-74

# CONGRATULATIONS !

Thank you for purchasing the Vestax VMC-002XLu Mixing Controller. We suggest that you read through this owner's manual thoroughly so that you may enjoy the full use of this product safely and in the knowledge of all its special features and suitably applications.

## CONTENTS

C A U T I O N .....	9
IMPORTANT SAFEGUARDS .....	10
F E A T U R E S .....	11
CONTROLS AND FUNCTIONS .....	12
T O P   P A N E L .....	12
F R O N T   P A N E L .....	13
R E A R   P A N E L .....	13
HOW TO CHANGE THE FADER UNIT .....	14
CONNECTION DIAGRAM .....	15
S P E C I F I C A T I O N S .....	15



## CAUTION

RISK OF ELECTRIC SHOCK DO NOT OPEN



**CAUTION : TO REDUCE THE RISK OF ELECTRIC SHOCK  
DO NOT REMOVE COVER (OR BACK)  
NO USER-SERVICEABLE PARTS INSIDE  
REFER SERVICING TO QUALIFIED SERVICE PERSONNEL**



The lightning flash with arrowhead symbol, within an equilateral triangle, is intended to alert the user to the presence of uninsulated "dangerous voltage" within the product's enclosure that may be of sufficient magnitude to constitute a risk of electric shock to persons.



The exclamation point within an equilateral triangle is intended to alert the user to the presence of important operating and maintenance (servicing) instructions in the literature accompanying the appliance.

**TO REDUCE THE RISK OF FIRE OR ELECTRIC SHOCK, DO NOT  
EXPOSE THIS APPLIANCE TO RAIN OR MOISTURE.**

# IMPORTANT SAFEGUARDS

## READ BEFORE OPERATING EQUIPMENT

This product was designed and manufactured to meet strict quality and safety standards. There are, however, some installation and operation precautions which you should be particularly aware of.

1. Read instructions-All the safety and operating instructions should be read before the appliance is operated.
2. Retain instructions-The safety and operating instructions should be retained for future reference.
3. Heed Warnings-All warnings on the appliance and in the operating instructions should be adhered to.
4. Follow Instructions-All operating and use instructions should be followed.
5. Cleaning-Do not use liquid cleaners or aerosol cleaners. Use a damp cloth for cleaning.
6. Attachments-Do not use attachments not recommended by the product manufacturer as they may cause hazards.
7. Water and Moisture-Do not use this product near water-for example, near a bath tub, wash bowl, kitchen sink, or laundry tub, in a wet basement, or near a swimming pool, and the like.
8. Accessories-Do not place this product on an unstable cart, stand, tripod, or table. The product may fall, causing serious injury to a child or adult, and serious damage to the appliance. Use only with a cart, stand, tripod, bracket, or table recommended by the manufacturer, or sold with product. Any mounting of the appliance should follow the manufacturer's instructions, and should use a mounting accessory recommended by the manufacturer.
9. This product should never be placed near or over a radiator or heat register. This product should not be placed in a built-in installation such as a bookcase or rack unless proper ventilation is provided or the manufacturer's instructions have been adhered to.
10. Power sources-This product should be operated only from the type of power source indicated on the marking label. If you are not sure of the type of power supply to your home, consult your appliance dealer or local power company.
11. Lightning-For added protection of this product during a lightning storm, or when it is left unattended and unused for long periods of time, unplug it from the wall outlet. This will prevent damage to the product due to lightning and power-line surges.
12. Overloading-Do not overload wall outlets and extension cords as this can result in a risk of fire or electric shock.
13. Object and Liquid Entry-Never push objects of any kind into this product through openings as they may touch dangerous voltage points or short-out parts that could result in a fire or electric shock. Never spill liquid of any kind on the product.
14. Servicing-Do not attempt to service product yourself as opening or removing covers may expose you to dangerous voltage or other hazards. Refer all servicing to qualified personnel.

15. **Damage Requiring Service**-Unplug this product from the wall outlet and refer servicing to qualified service personnel under the following conditions:

- a. When the power-supply cord or plug is damaged.
- b. If liquid has been spilled or objects have fallen into the product.
- c. If the product has been exposed to rain or water.
- d. If the product does not operate normally by following the operating instructions. Adjust only those controls that are covered by the operating instructions as an improper adjustment of other controls may result in damage and will often require extensive work by a qualified technician to restore the product to its normal operation.
- e. If the product has been dropped or cabinet has been damaged.
- f. When the product exhibits a distinct change in performance this indicates need for service.

16. **Replacement Parts**-When replacement parts are required, be sure the service technician has used replacement parts specified by the manufacturer or have the same characteristics as the original parts. Unauthorized substitutions may result in fire, electric shock or other hazards.

17. **Safety Check**-Upon completion of any service or repairs to product, ask the service technician to perform safety checks to determine that the product is in proper operating condition.

18. **Carts and Stands**-The appliance should be used only with a cart stand that is recommended by manufacturer.

19. An appliance and cart combination should be moved with care. Quick stops, excessive force, and uneven surfaces may cause the appliance and cart combination to overturn.

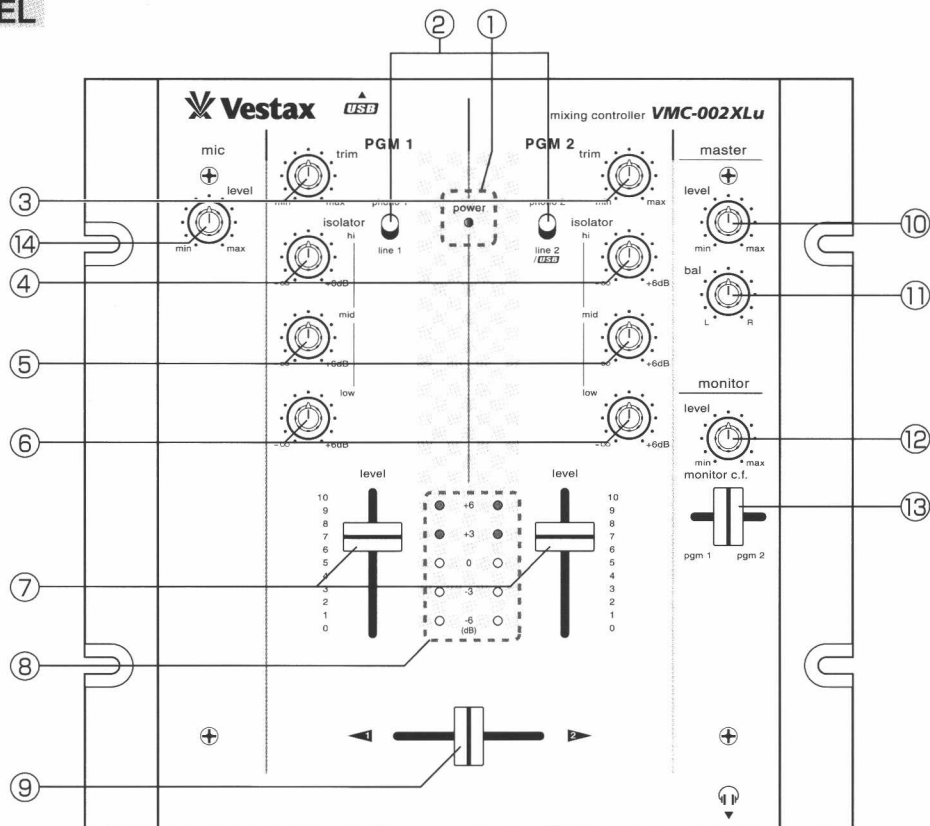


## FEATURES

- VMC-002XLu is equipped with 3-band isolator on each channel, allowing DJs to mix in the most creative way.
- The EQ curve has been refined by our manufacturing team to offer the sweetest sounding, and most striking EQ available among mixers in this price zone.
- Digital connection with computers and USB devices is enabled by installing TUB-1(USB Board / Sold Separately)to the OPTION BOARD slot.
- The cross fader of the VMC-002XLu is the ultra smooth CF-R US, which is the best quality fader available in this class.
- To give young DJs all over the world a mixer that can grow with their career, the cross-fader in the VMC-002XLu can be upgraded to the most double Vestax PRO-fader, CF-PCV, to realize pro-level performance.

# CONTROLS AND FUNCTIONS

## TOP PANEL



### ① POWER INDICATOR

Lights up when the POWER SWITCH ⑮ is on.

### ② INPUT SELECTOR

Used to select the input (LINE or PHONO) to be sent to each PGM channel. The upper most position will select PHONO input. This selector switch can also be used to perform for TRANSFORMER SCRATCH.

※When 2 individual inputs are connected to LINE 2 and USB(Optional, please read REAR PANEL on page13) and if the input select switch of PGM 2 is set to LINE 2/USB, both signals will be mixed in to the channel.

### ③ TRIM VOLUME

Adjusts the input level of each channel. For optional acoustic quality, set the INPUT LEVEL VOLUME u to a position of 7 or 8 then; adjust the TRIM so that a sufficient signal is fed through the channel without distorting.

### ④ PGM ISOLATOR HI

Adjusts the HI frequency level of each PGM.

### ⑤ PGM ISOLATOR MID

Adjusts the MID frequency level of each PGM.

### ⑥ PGM ISOLATOR LOW

Adjusts the LOW frequency level of each PGM.

### ⑦ INPUT LEVEL VOLUME

Used to adjust the input level of each PGM channel.

### ⑧ INPUT LEVEL METER

The LED level meters indicate the input signal level of each PGM channel.

### ⑨ CROSS FADER

When the input level of PGM1 and PGM2 are properly set, PGM1 will be heard with the crossfader set to the left side. PGM2 will be heard with the crossfader set to the right side. When the crossfader is set in the center, both programs will be heard. This is detachable fader for the ease of replacement with "CF-R US" when it is worn out.

### ⑩ MASTER LEVEL VOLUME

Adjusts the signal level outputs from LINE OUT ⑮・⑮.

### ⑪ MASTER BALANCE VOLUME

Adjusts the signal balance of the L to R side of the outputs.

### ⑫ MONITOR LEVEL VOLUME

Adjusts the headphone monitor level.

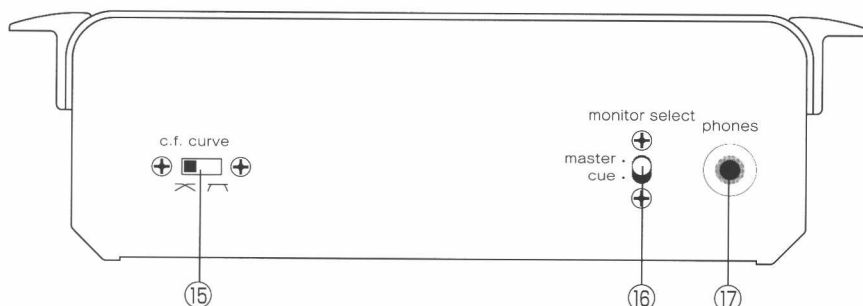
### ⑬ CF MONITOR VOLUME

Crossfader signal to be monitored from each program when the MONITOR SELECT SWITCH is selected "cue".

### ⑭ MIC LEVEL VOLUME

Adjusts the input level of the MIC INPUT ⑮.

## FRONT PANEL



### ⑮ C.F. CURVE SWITCH

Selects the cross fader curve. Set it to the right side for rapid cuts and scratches. Set it to the left side for a gentle curve suitable for long mixes.

### ⑯ MONITOR SELECT SWITCH

This switch is used to select the way of monitoring from following.

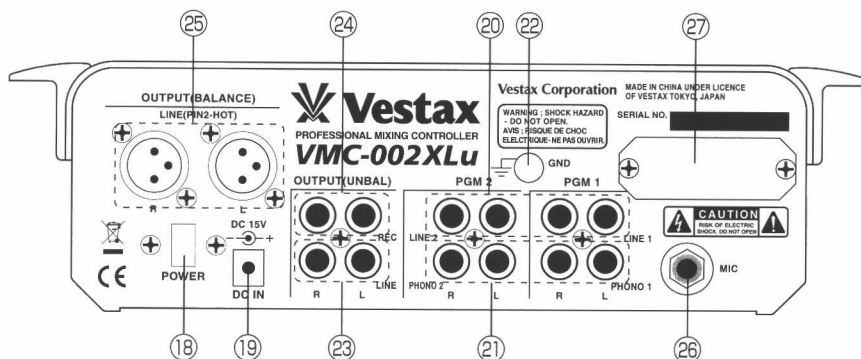
**CUE**.....It allows you to hear input signal of PGM1, PGM2 selected by CF MONITOR ⑬.

**MASTER**...It allows you to hear the signal of LINE OUT.

### ⑰ PHONE JACK

Connect the headphones with the impedance of 8ohm to 600ohm.

## REAR PANEL



### ⑱ POWER SWITCH

Use to turn power on.

### ⑲ POWER JACK

Connect the Vestax DC-15A, AC adaptor.

### ⑳ LINE INPUT JACK

Connect the equipment with line level output (-10dB or 0dB), such as CD players, tape decks, DATs, MDs, etc. The signal from line level equipment is fed to the PGM channels when Line input is selected.

### ㉑ PHONO INPUT JACK

Connect turntables equipped with MM (Moving Magnet type) cartridge. The signal from the turntable is fed to the PGM channels when Phono input is selected.

### ㉒ GROUND TERMINAL

Connect this terminal to the ground lead of the turntables.

### ㉓ LINE OUT JACK

Connect to the input of power amplifier.

### ㉔ REC OUT JACK

Connect to the input jack of the tape recorder, MD, DAT, etc. The output level of this jack is fixed and does not change with the MASTER LEVEL ⑩.

### ㉕ LINE OUTPUT JACK

**[BALANCED XLR JACK: HOT=PIN2]**

Connect to the input of power amplifier.

### ㉖ MIC INPUT JACK

Input jack for MIC.

### ㉗ OPTION BOARD INSERT

## HOW TO CHANGE THE FADER UNIT

### ■HOW TO REMOVE THE TOP PANEL.

- ① Remove all fader knobs and the 4 screws. (see fig.A)
- ② Remove the top panel.

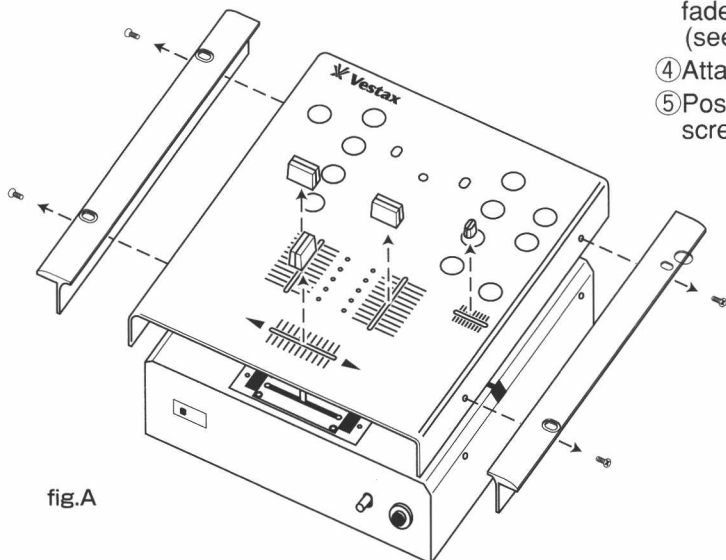


fig.A

### ■HOW TO CHANGE THE FADER UNIT

- ① Remove the screws on the fader panel. (see fig.B)
- ② Remove the fader unit from the mixer.
- ③ Carefully remove the multi-cable connector from fader unit. (see fig.C)
- ④ Attach multi-cable connector to new fader unit.
- ⑤ Position the fader unit carefully and secure with screws.

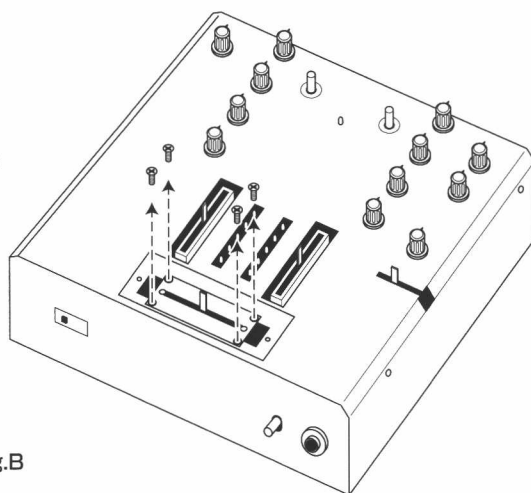


fig.B

### ■HOW TO REPLACE THE CF UNIT WITH "CF-PCV"

Please see fig.C for replacement of the fader. Place the fader unit in the proper position and fix it with two screws. (fig.D-①)

There is a switch for CF-PCV unit. When "CF-PCV" unit is installed, set the switch to "PCV" mode.

You can replace the CF unit with "CF-RUS", "CF-R" or "CF-PCV".

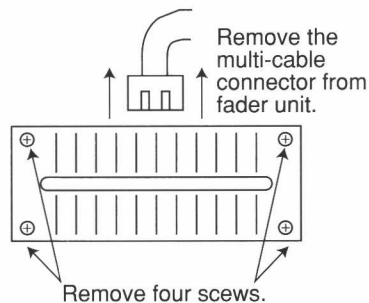


fig.C

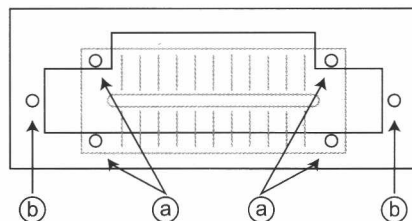



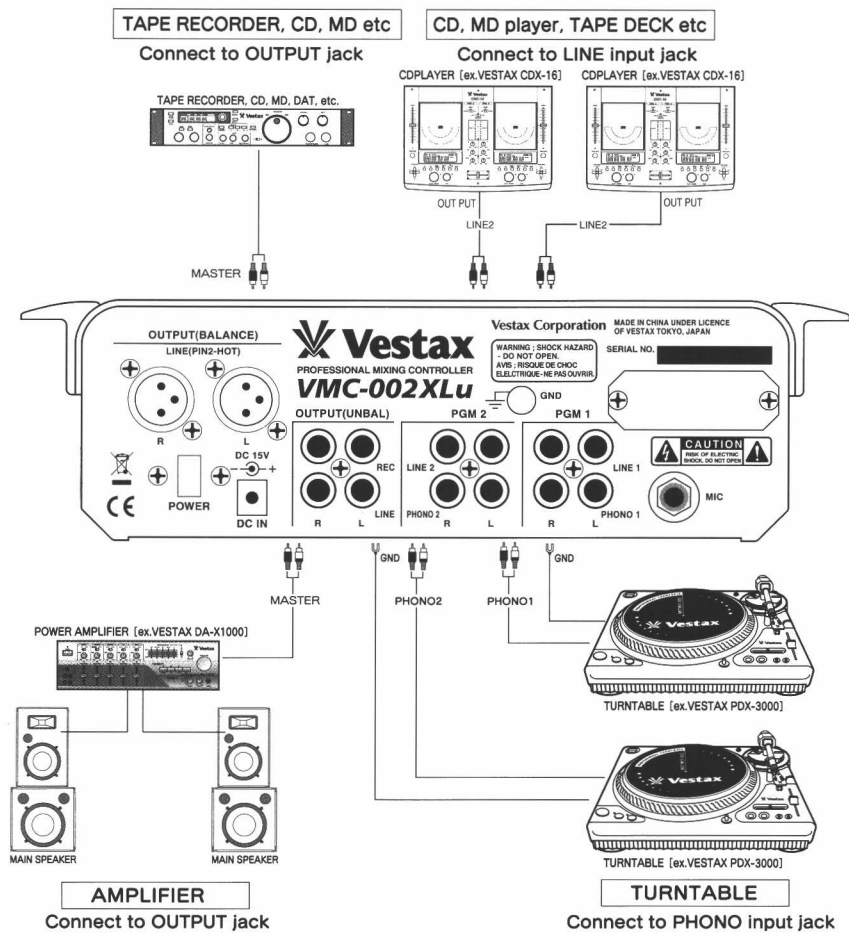
fig.D

(a): CF-RUS or CF-R  
(b): CF-PCV

### CAUTION

When the fader unit is replaced, do not loosen the screws with  marking.

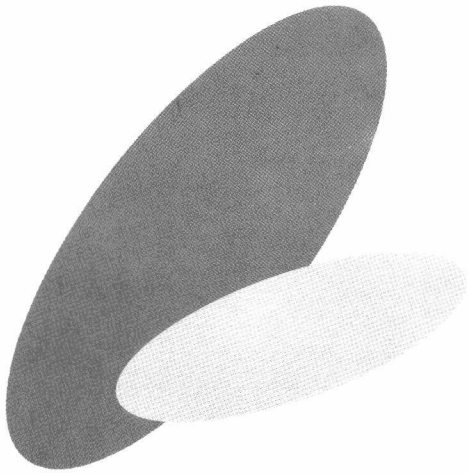
# CONNECTION DIAGRAM [example]



## SPECIFICATIONS

		NOMINAL INPUT	IMPEDANCE
INPUT SECTION	PHONO 1, 2 (RCA PIN JACK)	-45dBv	49K $\Omega$
	LINE 1, 2 (RCA PIN JACK)	-4dBv	7K $\Omega$
	MIC (1/4" PHONE JACK)	-52dBv	3.3K $\Omega$
		NOMINAL OUTPUT	IMPEDANCE
OUTPUT SECTION	LINE OUT (RCA JACK)	0dBv	220 $\Omega$
		MAXIMUM OUTPUT	IMPEDANCE
	HEADPHONE (1/4" PHONE JACK)	100mW(47 $\Omega$ load)	>8 $\Omega$
FREQUENCY RESPONSE		20Hz ~ 20KHz $\pm$ 3dB	
CROSS TALK		65dB over	
S/N RATIO		70dB over	
POWER SUPPLY		DC15V 500mA	
DIMENSIONS(W×H×D)		264×105×260 (mm)	
WEIGHT		4.0kg	





# IMPORTANT SAFEGUARDS

## READ BEFORE OPERATING EQUIPMENT

This product was designed and manufactured to meet strict quality and safety standards. There are, however, some installation and operation precautions which you should be particularly aware of.

1. Read instructions-All the safety and operating instructions should be read before the appliance is operated.
2. Retain instructions-The safety and operating instructions should be retained for future reference.
3. Heed Warnings-All warnings on the appliance and in the operating instructions should be adhered to.
4. Follow Instructions-All operating and use instructions should be followed.
5. Cleaning-Do not use liquid cleaners or aerosol cleaners. Use a damp cloth for cleaning.
6. Attachments-Do not use attachments not recommended by the product manufacturer as they may cause hazards.
7. Water and Moisture-Do not use this product near water-for example, near a bath tub, wash bowl, kitchen sink, or laundry tub, in a wet basement, or near a swimming pool, and the like.
8. Accessories-Do not place this product on an unstable cart, stand, tripod, or table. The product may fall, causing serious injury to a child or adult, and serious damage to the appliance. Use only with a cart, stand, tripod, bracket, or table recommended by the manufacturer, or sold with product. Any mounting of the appliance should follow the manufacturer's instructions, and should use a mounting accessory recommended by the manufacturer.
9. This product should never be placed near or over a radiator or heat register. This product should not be placed in a built-in installation such as a bookcase or rack unless proper ventilation is provided or the manufacturer's instructions have been adhered to.
10. Power sources-This product should be operated only from the type of power source indicated on the marking label. If you are not sure of the type of power supply to your home, consult your appliance dealer or local power company.
11. Lightning-For added protection of this product during a lightning storm, or when it is left unattended and unused for long periods of time, unplug it from the wall outlet. This will prevent damage to the product due to lightning and power-line surges.
12. Overloading-Do not overload wall outlets and extension cords as this can result in a risk of fire or electric shock.
13. Object and Liquid Entry-Never push objects of any kind into this product through openings as they may touch dangerous voltage points or short-out parts that could result in a fire or electric shock. Never spill liquid of any kind on the product.
14. Servicing-Do not attempt to service product yourself as opening or removing covers may expose you to dangerous voltage or other hazards. Refer all servicing to qualified personnel.

15. **Damage Requiring Service**-Unplug this product from the wall outlet and refer servicing to qualified service personnel under the following conditions:

- a. When the power-supply cord or plug is damaged.
- b. If liquid has been spilled or objects have fallen into the product.
- c. If the product has been exposed to rain or water.
- d. If the product does not operate normally by following the operating instructions. Adjust only those controls that are covered by the operating instructions as an improper adjustment of other controls may result in damage and will often require extensive work by a qualified technician to restore the product to its normal operation.
- e. If the product has been dropped or cabinet has been damaged.
- f. When the product exhibits a distinct change in performance this indicates need for service.

16. **Replacement Parts**-When replacement parts are required, be sure the service technician has used replacement parts specified by the manufacturer or have the same characteristics as the original parts. Unauthorized substitutions may result in fire, electric shock or other hazards.

17. **Safety Check**-Upon completion of any service or repairs to product, ask the service technician to perform safety checks to determine that the product is in proper operating condition.

18. **Carts and Stands**-The appliance should be used only with a cart stand that is recommended by manufacturer.

19. An appliance and cart combination should be moved with care. Quick stops, excessive force, and uneven surfaces may cause the appliance and cart combination to overturn.

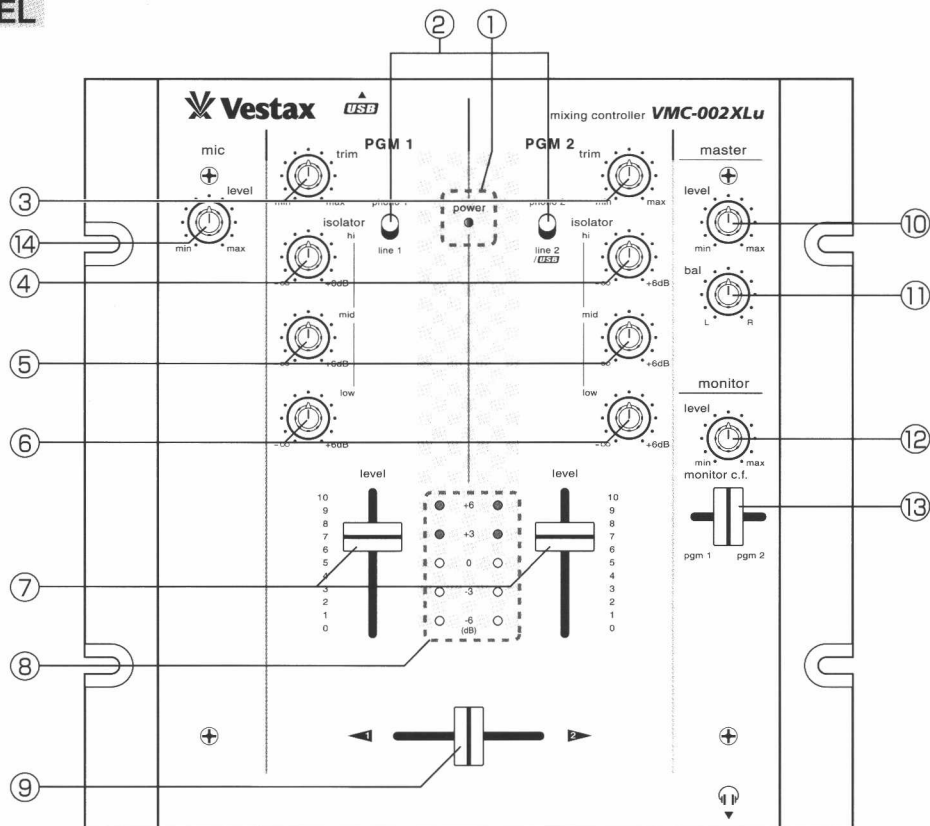


## FEATURES

- VMC-002XLu is equipped with 3-band isolator on each channel, allowing DJs to mix in the most creative way.
- The EQ curve has been refined by our manufacturing team to offer the sweetest sounding, and most striking EQ available among mixers in this price zone.
- Digital connection with computers and USB devices is enabled by installing TUB-1(USB Board / Sold Separately)to the OPTION BOARD slot.
- The cross fader of the VMC-002XLu is the ultra smooth CF-R US, which is the best quality fader available in this class.
- To give young DJs all over the world a mixer that can grow with their career, the cross-fader in the VMC-002XLu can be upgraded to the most double Vestax PRO-fader, CF-PCV, to realize pro-level performance.

# CONTROLS AND FUNCTIONS

## TOP PANEL



### ① POWER INDICATOR

Lights up when the POWER SWITCH ⑮ is on.

### ② INPUT SELECTOR

Used to select the input (LINE or PHONO) to be sent to each PGM channel. The upper most position will select PHONO input. This selector switch can also be used to perform for TRANSFORMER SCRATCH.

※When 2 individual inputs are connected to LINE 2 and USB(Optional, please read REAR PANEL on page13) and if the input select switch of PGM 2 is set to LINE 2/USB, both signals will be mixed in to the channel.

### ③ TRIM VOLUME

Adjusts the input level of each channel. For optional acoustic quality, set the INPUT LEVEL VOLUME u to a position of 7 or 8 then; adjust the TRIM so that a sufficient signal is fed through the channel without distorting.

### ④ PGM ISOLATOR HI

Adjusts the HI frequency level of each PGM.

### ⑤ PGM ISOLATOR MID

Adjusts the MID frequency level of each PGM.

### ⑥ PGM ISOLATOR LOW

Adjusts the LOW frequency level of each PGM.

### ⑦ INPUT LEVEL VOLUME

Used to adjust the input level of each PGM channel.

### ⑧ INPUT LEVEL METER

The LED level meters indicate the input signal level of each PGM channel.

### ⑨ CROSS FADER

When the input level of PGM1 and PGM2 are properly set, PGM1 will be heard with the crossfader set to the left side. PGM2 will be heard with the crossfader set to the right side. When the crossfader is set in the center, both programs will be heard. This is detachable fader for the ease of replacement with "CF-R US" when it is worn out.

### ⑩ MASTER LEVEL VOLUME

Adjusts the signal level outputs from LINE OUT ⑳・㉑.

### ⑪ MASTER BALANCE VOLUME

Adjusts the signal balance of the L to R side of the outputs.

### ⑫ MONITOR LEVEL VOLUME

Adjusts the headphone monitor level.

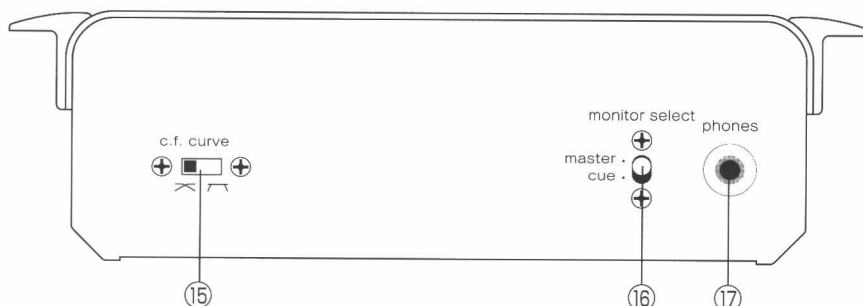
### ⑬ CF MONITOR VOLUME

Crossfader signal to be monitored from each program when the MONITOR SELECT SWITCH is selected "cue".

### ⑭ MIC LEVEL VOLUME

Adjusts the input level of the MIC INPUT ㉒.

## FRONT PANEL



### 15 C.F. CURVE SWITCH

Selects the cross fader curve. Set it to the right side for rapid cuts and scratches. Set it to the left side for a gentle curve suitable for long mixes.

### 16 MONITOR SELECT SWITCH

This switch is used to select the way of monitoring from following.

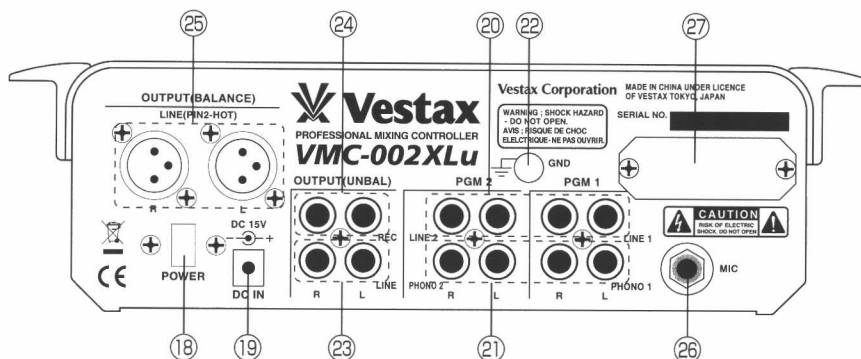
**CUE**.....It allows you to hear input signal of PGM1, PGM2 selected by CF MONITOR 13.

**MASTER**...It allows you to hear the signal of LINE OUT.

### 17 PHONE JACK

Connect the headphones with the impedance of 8ohm to 600ohm.

## REAR PANEL



### 18 POWER SWITCH

Use to turn power on.

### 19 POWER JACK

Connect the Vestax DC-15A, AC adaptor.

### 20 LINE INPUT JACK

Connect the equipment with line level output (-10dB or 0dB), such as CD players, tape decks, DATs, MDs, etc. The signal from line level equipment is fed to the PGM channels when Line input is selected.

### 21 PHONO INPUT JACK

Connect turntables equipped with MM (Moving Magnet type) cartridge. The signal from the turntable is fed to the PGM channels when Phono input is selected.

### 22 GROUND TERMINAL

Connect this terminal to the ground lead of the turntables.

### 23 LINE OUT JACK

Connect to the input of power amplifier.

### 24 REC OUT JACK

Connect to the input jack of the tape recorder, MD, DAT, etc. The output level of this jack is fixed and does not change with the MASTER LEVEL 10.

### 25 LINE OUTPUT JACK

[BALANCED XLR JACK: HOT=PIN2]

Connect to the input of power amplifier.

### 26 MIC INPUT JACK

Input jack for MIC.

### 27 OPTION BOARD INSERT

## HOW TO CHANGE THE FADER UNIT

### ■HOW TO REMOVE THE TOP PANEL.

- ① Remove all fader knobs and the 4 screws. (see fig.A)
- ② Remove the top panel.

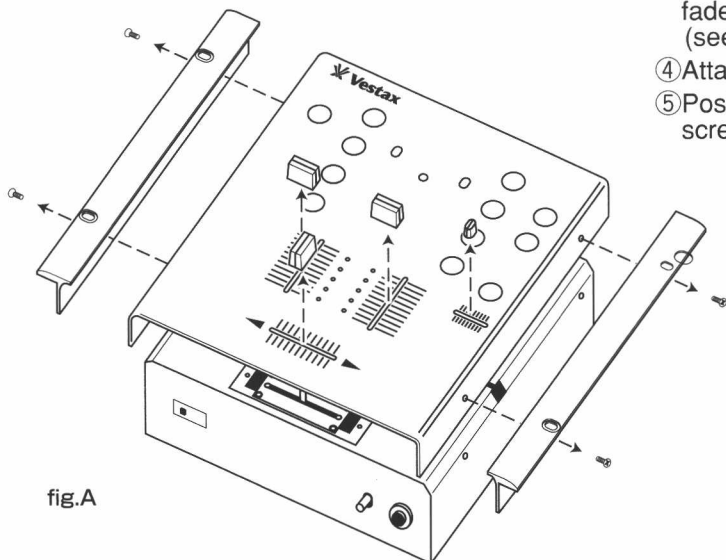


fig.A

### ■HOW TO CHANGE THE FADER UNIT

- ① Remove the screws on the fader panel. (see fig.B)
- ② Remove the fader unit from the mixer.
- ③ Carefully remove the multi-cable connector from fader unit. (see fig.C)
- ④ Attach multi-cable connector to new fader unit.
- ⑤ Position the fader unit carefully and secure with screws.

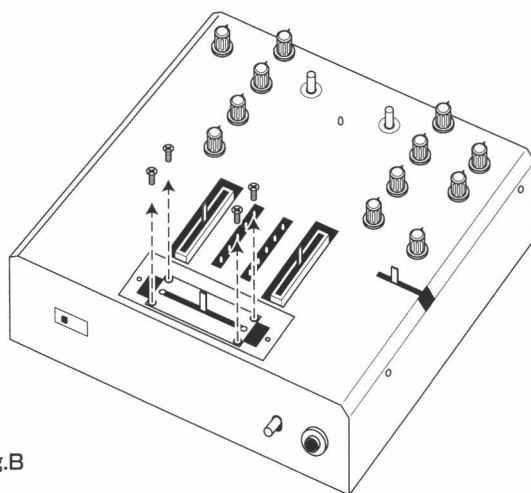


fig.B

### ■HOW TO REPLACE THE CF UNIT WITH "CF-PCV"

Please see fig.C for replacement of the fader. Place the fader unit in the proper position and fix it with two screws. (fig.D-①)

There is a switch for CF-PCV unit. When "CF-PCV" unit is installed, set the switch to "PCV" mode.

You can replace the CF unit with "CF-RUS", "CF-R" or "CF-PCV".

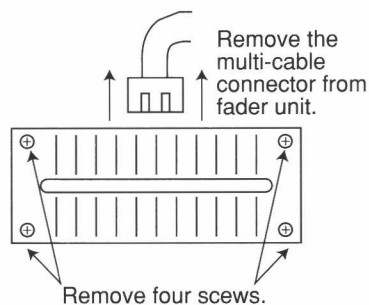


fig.C

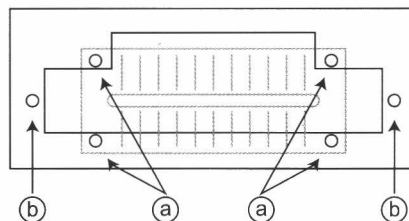



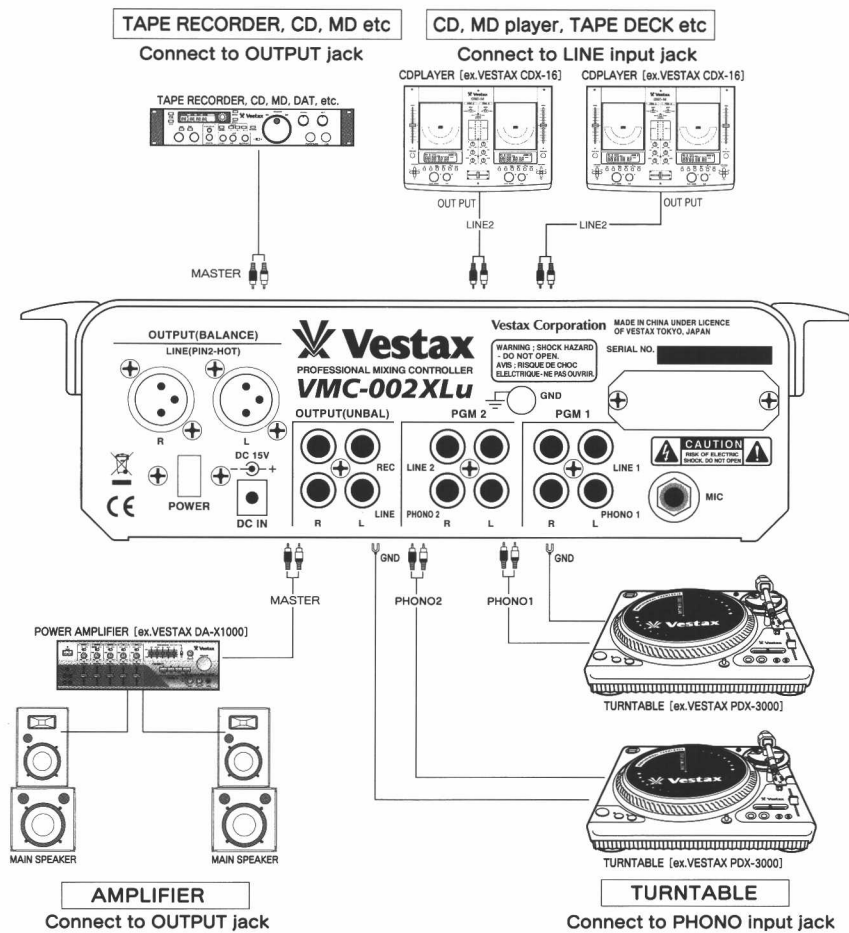
fig.D

(a): CF-RUS or CF-R  
(b): CF-PCV

### CAUTION

When the fader unit is replaced, do not loosen the screws with  marking.

# CONNECTION DIAGRAM [example]



## SPECIFICATIONS

		NOMINAL INPUT	IMPEDANCE
INPUT SECTION	PHONO 1, 2 (RCA PIN JACK)	-45dBv	49K $\Omega$
	LINE 1, 2 (RCA PIN JACK)	-4dBv	7K $\Omega$
	MIC (1/4" PHONE JACK)	-52dBv	3.3K $\Omega$
		NOMINAL OUTPUT	IMPEDANCE
OUTPUT SECTION	LINE OUT (RCA JACK)	0dBv	220 $\Omega$
		MAXIMUM OUTPUT	IMPEDANCE
	HEADPHONE (1/4" PHONE JACK)	100mW(47 $\Omega$ load)	>8 $\Omega$
FREQUENCY RESPONSE		20Hz ~ 20KHz $\pm$ 3dB	
CROSS TALK		65dB over	
S/N RATIO		70dB over	
POWER SUPPLY		DC15V 500mA	
DIMENSIONS(W×H×D)		264×105×260 (mm)	
WEIGHT		4.0kg	

