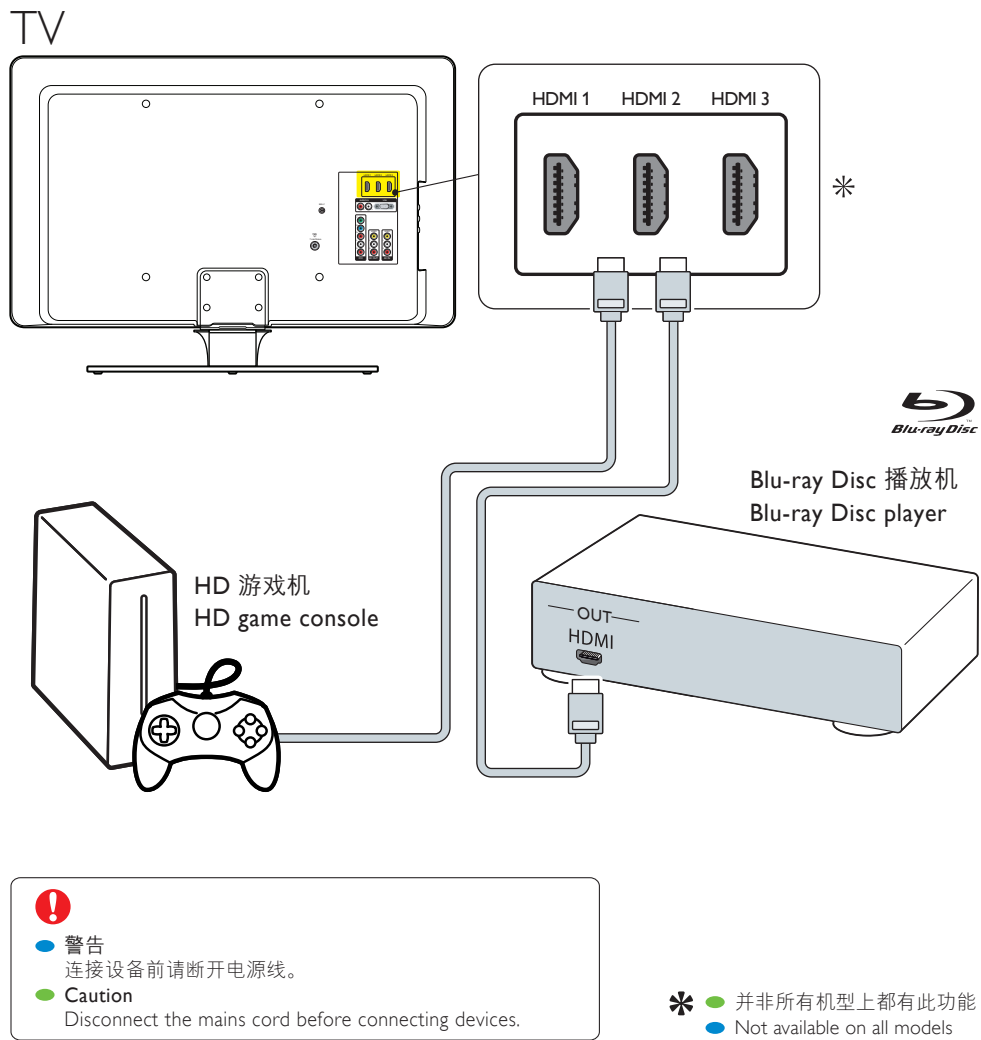




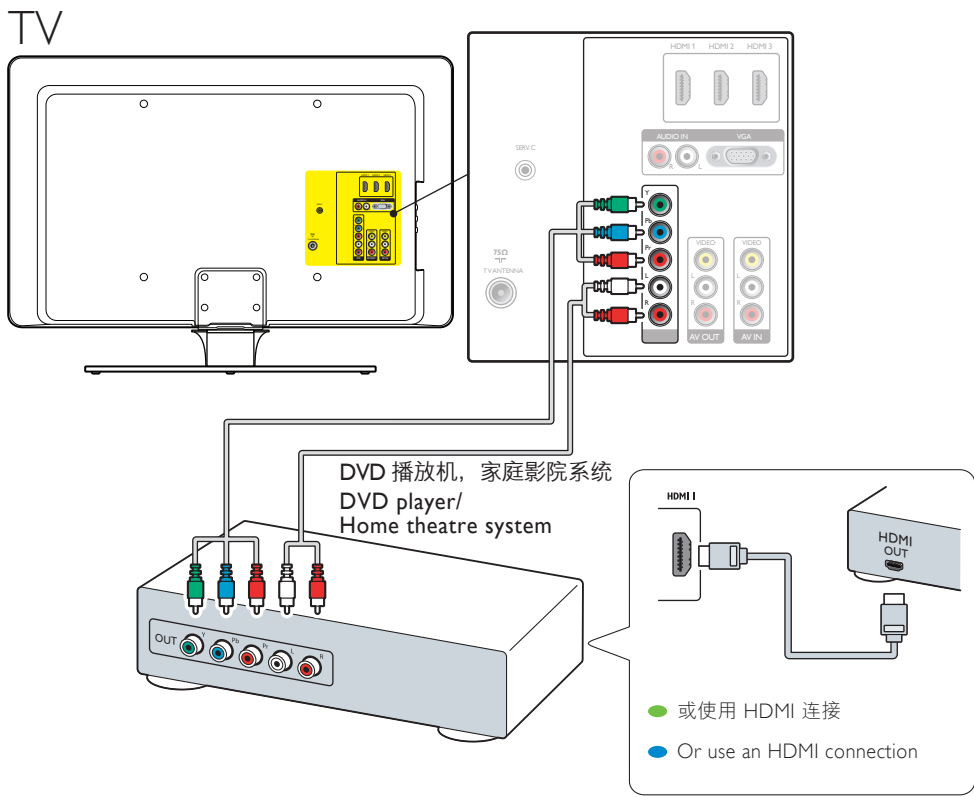
## Blu-ray Disc 播放机、HD 游戏机

Blu-ray Disc player, HD game console



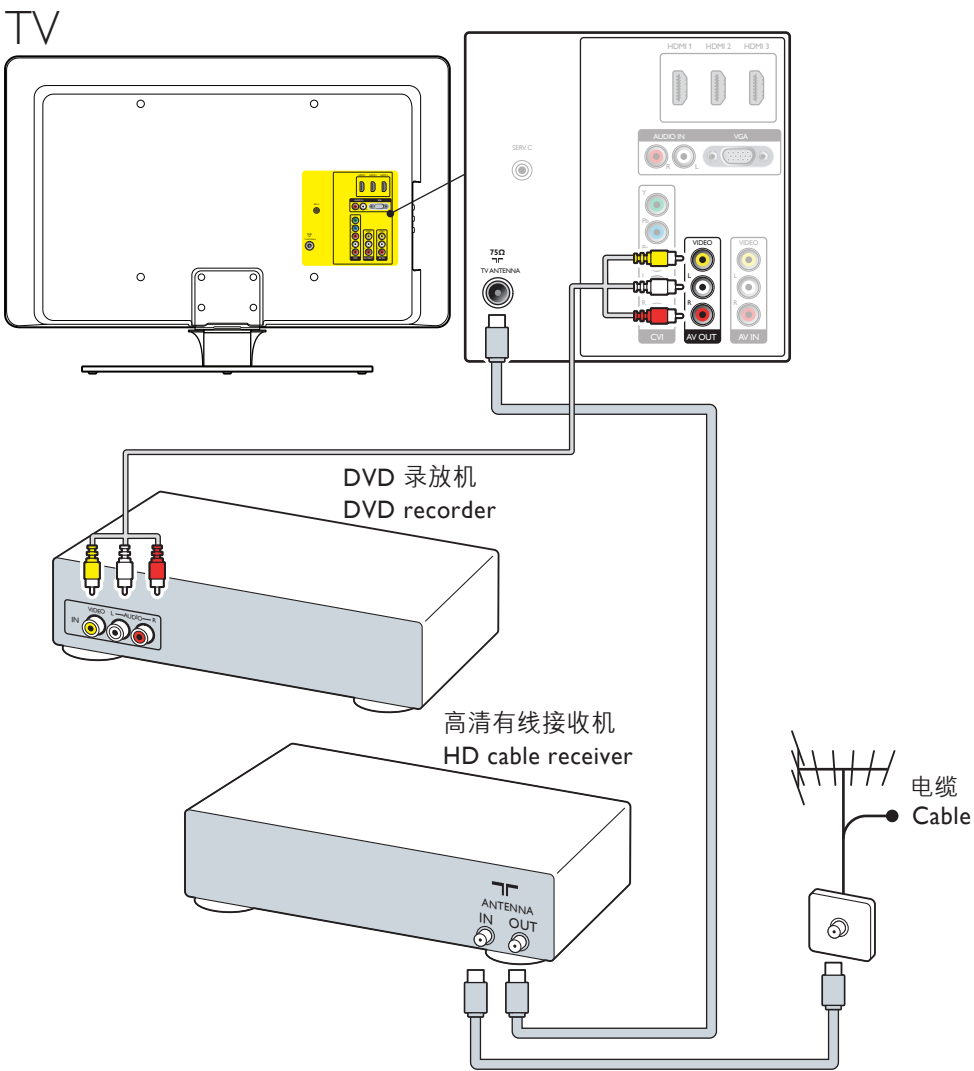
## DVD 播放机、家庭影院系统

DVD player, home theatre system



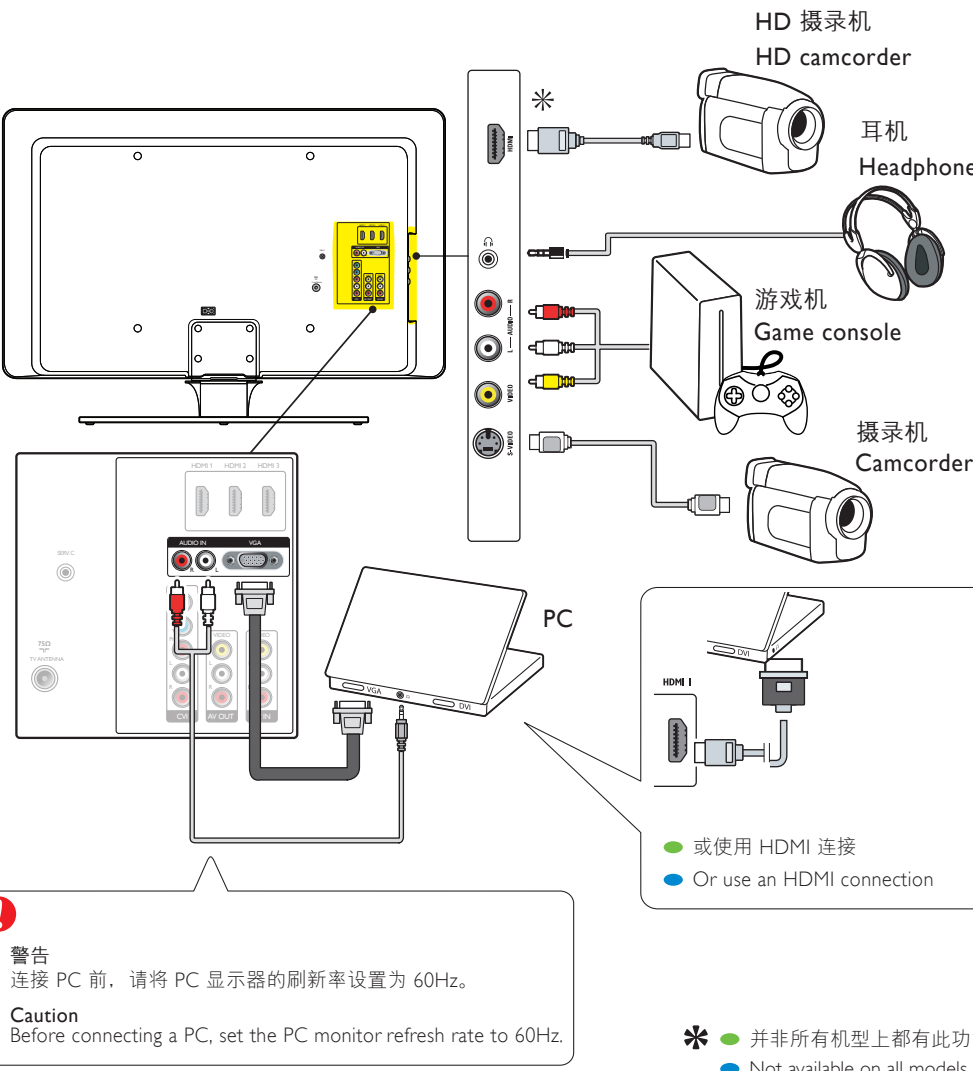
## DVD 录放机、有线接收机

DVD recorder, cable receiver



## HD 摄录机、耳机、游戏机、摄录机、PC

HD camcorder, headphones, game console, camcorder, PC



# 快速入门

设定

Installation

PHILIPS

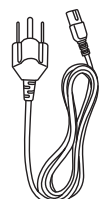
## 包装清单

What's in the box



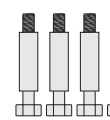
遥控器和 2 节 AAA 电池 (7 号)

Remote control and 2 x AAA batteries



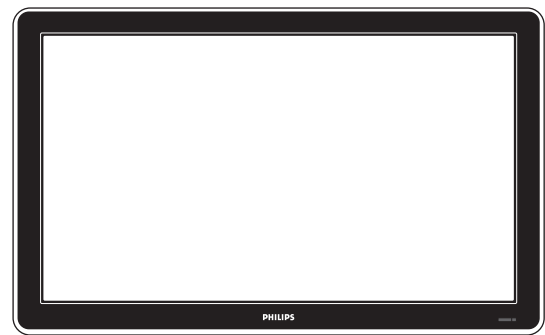
电源线

Mains cord



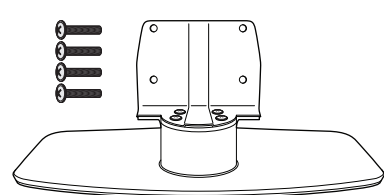
4 个壁挂安装螺栓和定距片

4 x wall mounting bolts and spacers



电视机

Television



电视底座和 4 个螺栓\*

TV stand and 4 x bolts\*

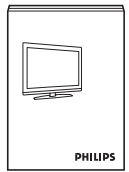
某些机型出厂时已安装

Factory mounted on some models



快速入门指南

Quick Start Guide



用户手册

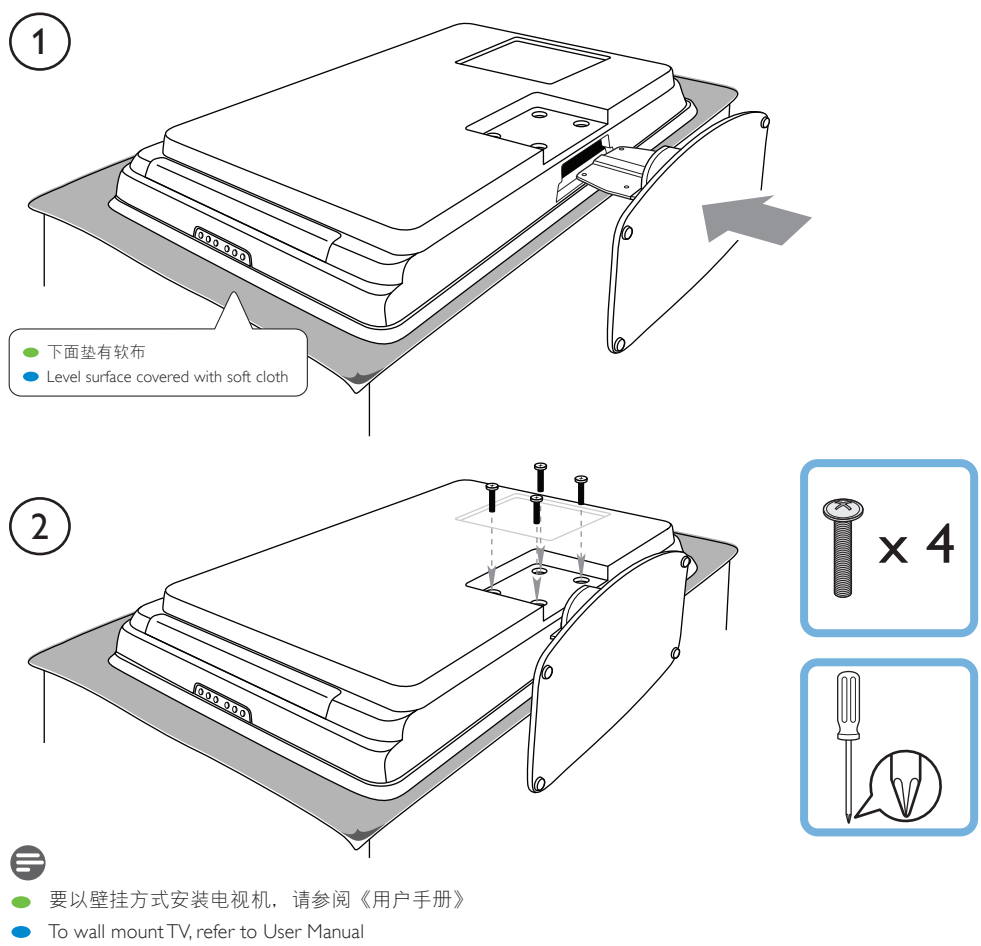
User Manual

## 电视机座安装\*

Stand mount the TV\*

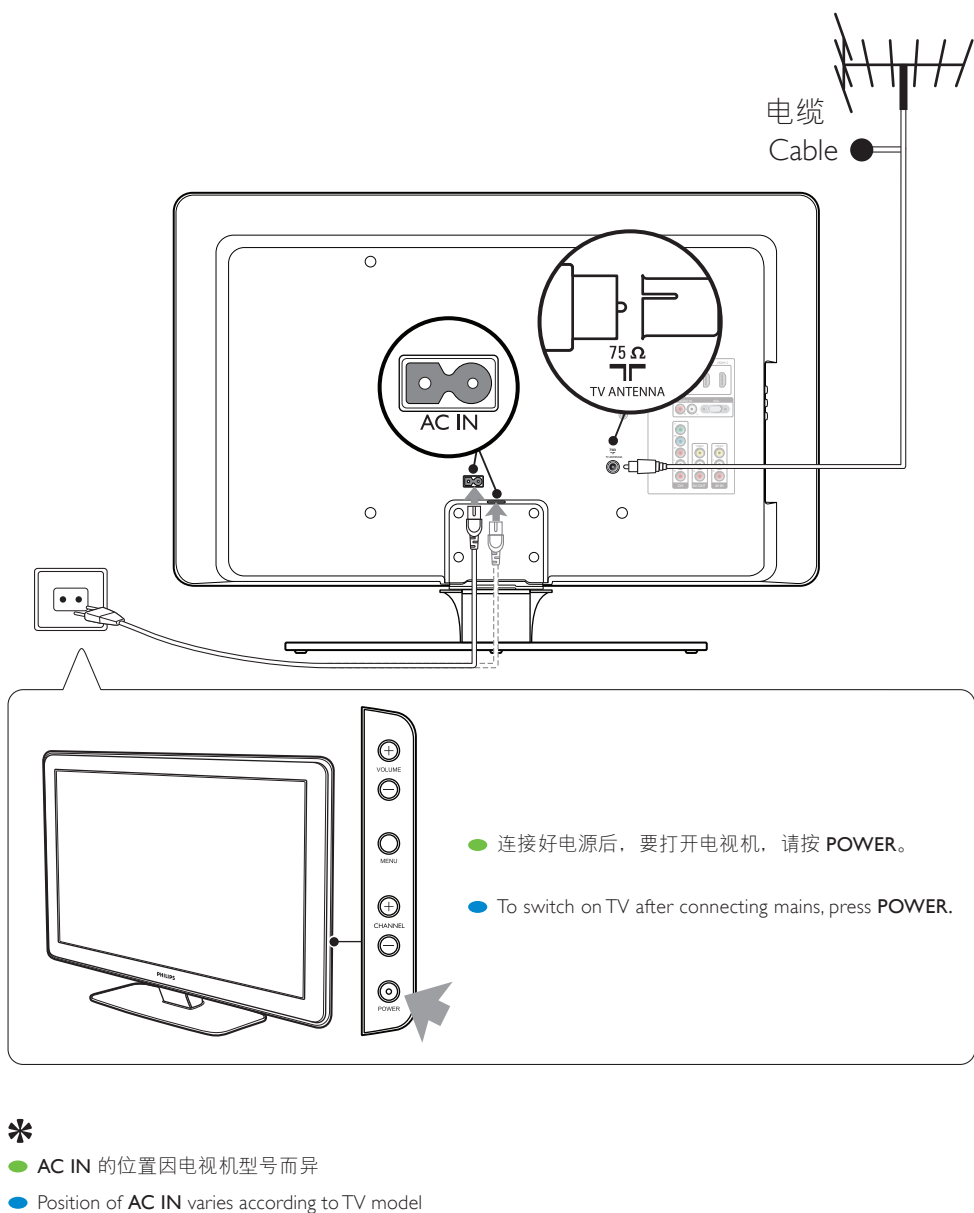
适用于没有安装电视机座的电视机。如果出厂时已安装，请取下插头并旋转。

Applicable to TVs without mounted stands. If factory mounted, remove plug to swivel.



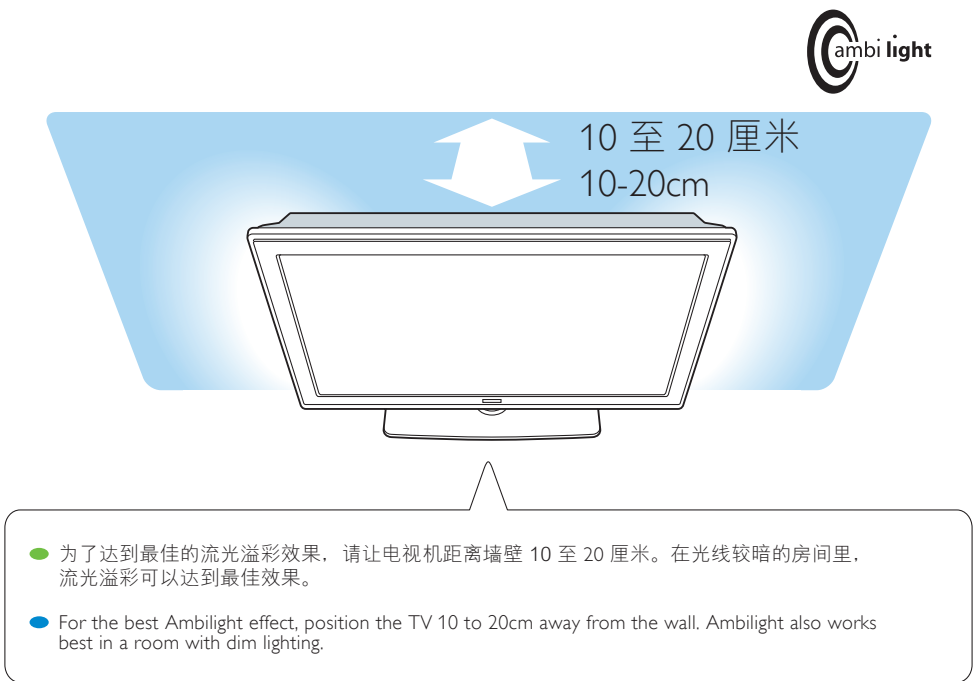
## 连接电源\*和天线

Connect the mains\* and antenna



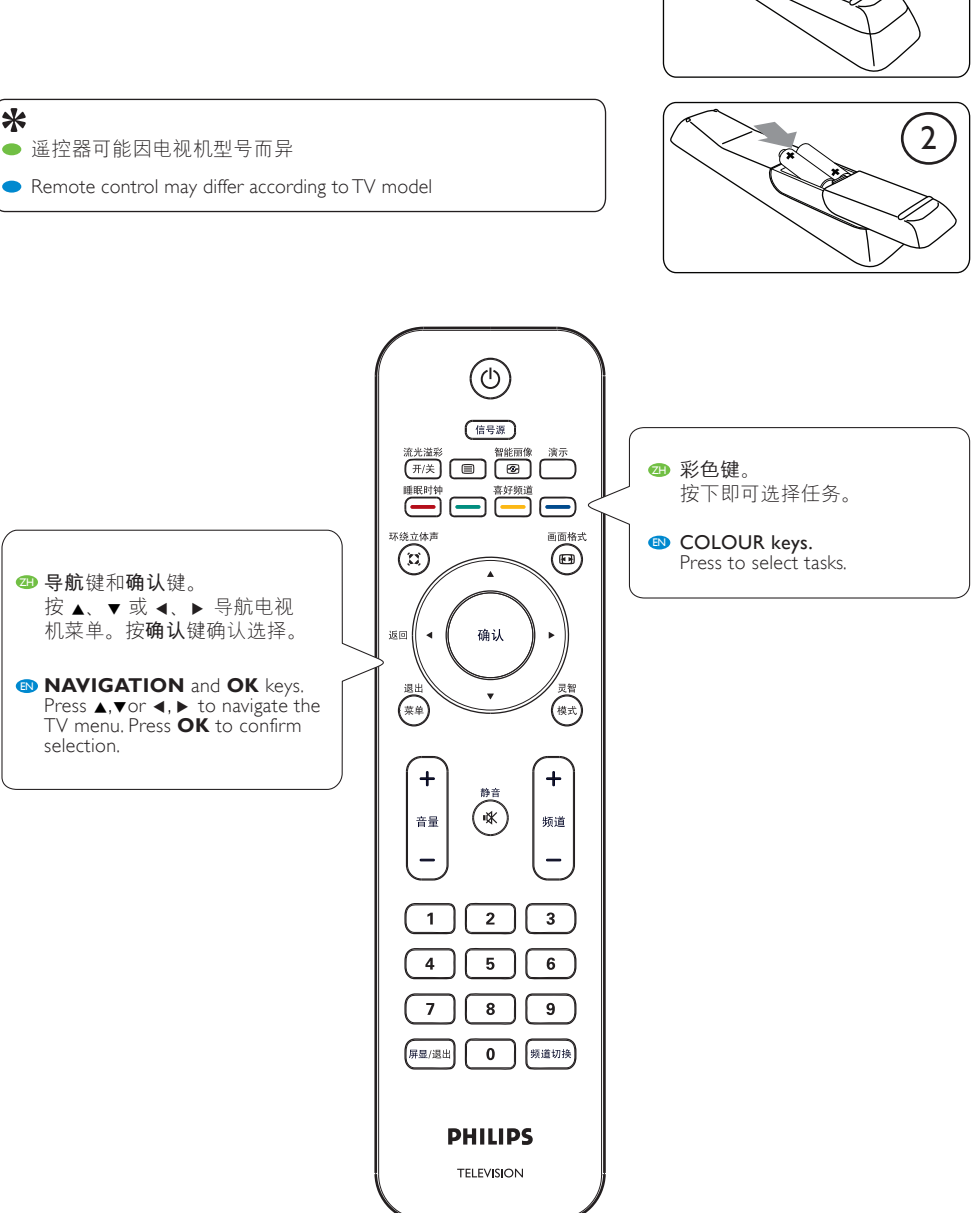
## 流光溢彩\*设置

Ambilight\* setup



## 使用遥控器\*

Use the remote control\*



## 频道设定

Channel installation

