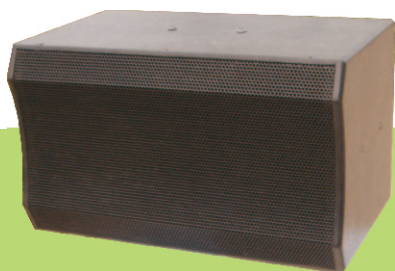


## KV 音箱系列

# KV-850

## 10" TWO-WAY SPEAKER SYSTEM

### 单10"两分频全音域音箱



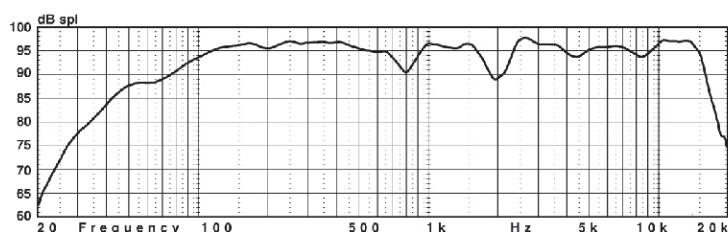
|                         |      |                   |
|-------------------------|------|-------------------|
| FREQUENCY RANGE         | 频率响应 | 45-19KHz          |
| POWER HANDLING          | 标称功率 | 220W              |
| NOMINAL IMPEDANCE       | 标称阻抗 | 8 ohm             |
| SENSITIVITY ( dB/1m1w ) | 灵敏度  | 98dB              |
| NOMINAL DISPERSION      | 散射角度 | 80° × 80°         |
| DIMENSIONS ( H*W*D )    | 箱体尺寸 | 297 × 507 × 310mm |
| NET WEIGHT              | 净重   | 12.8kg            |

The KV-850 is a 2-way full range system in a trapezoidal, computer optimized enclosure. Loudspeaker compliment consists of an 10" LF woofer in a ported sub-enclosure, and a single 4" × 2 compression driver mounted on a 80° × 80° horn. A factory optimized internal crossover is installed to ensure balanced output between the HF and LF components. The enclosure is constructed of durable 18mm void-free MDF laminate, dadoed for strength and durability. Integrated eyebolt receptacles are located on the top of the system to facilitate a vertical installation. Perforated steel is employed for frontal protection of the loudspeaker compliment.

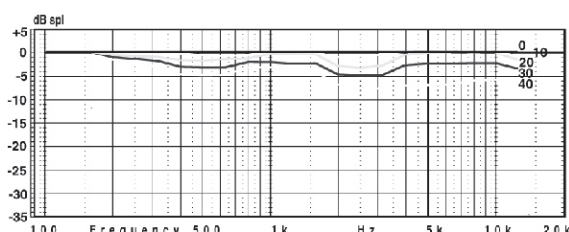
#### 使用范围

会议室、宴会厅、教室、演艺厅、的士高、慢遥吧、卡拉OK、礼堂、教堂、俱乐部、会所

## Response data



on axis response (2.83v@1m, free-field conditions)



off axis response (normalized to on axis response)