

Reference Manual





TLP 700MV and TLP 700TV

IP Link Touch Panel Control Systems

Precautions

Safety Instructions • English

- 


This symbol is intended to alert the user of important operating and maintenance (servicing) instructions in the literature provided with the equipment.
- 


This symbol is intended to alert the user of the presence of uninsulated dangerous voltage within the product's enclosure that may present a risk of electric shock.

Caution

- Read Instructions** • Read and understand all safety and operating instructions before using the equipment.
- Retain Instructions** • The safety instructions should be kept for future reference.
- Follow Warnings** • Follow all warnings and instructions marked on the equipment or in the user information.
- Avoid Attachments** • Do not use tools or attachments that are not recommended by the equipment manufacturer because they may be hazardous.

Consignes de Sécurité • Français

- 


Ce symbole sert à avertir l'utilisateur que la documentation fournie avec le matériel contient des instructions importantes concernant l'exploitation et la maintenance (réparation).
- 


Ce symbole sert à avertir l'utilisateur de la présence dans le boîtier de l'appareil de tensions dangereuses non isolées posant des risques d'électrocution.

Attention

- Lire les instructions** • Prendre connaissance de toutes les consignes de sécurité et d'exploitation avant d'utiliser le matériel.
- Conservser les instructions** • Ranger les consignes de sécurité afin de pouvoir les consulter à l'avenir.
- Respecter les avertissements** • Observer tous les avertissements et consignes marqués sur le matériel ou présentés dans la documentation utilisateur.
- Eviter les pièces de fixation** • Ne pas utiliser de pièces de fixation ni d'outils non recommandés par le fabricant du matériel car cela risquerait de poser certains dangers.

Sicherheitsanleitungen • Deutsch

- 


Dieses Symbol soll dem Benutzer in der im Lieferumfang enthaltenen Dokumentation besonders wichtige Hinweise zur Bedienung und Wartung (Instandhaltung) geben.
- 


Dieses Symbol soll den Benutzer darauf aufmerksam machen, daß im Inneren des Gehäuses dieses Produktes gefährliche Spannungen, die nicht isoliert sind und die einen elektrischen Schock verursachen können, herrschen.

Achtung

- Lesen der Anleitungen** • Bevor Sie das Gerät zum ersten Mal verwenden, sollten Sie alle Sicherheits- und Bedienungsanleitungen genau durchlesen und verstehen.
- Aufbewahren der Anleitungen** • Die Hinweise zur elektrischen Sicherheit des Produktes sollten Sie aufbewahren, damit Sie im Bedarfsfall darauf zurückgreifen können.
- Befolgen der Warnhinweise** • Befolgen Sie alle Warnhinweise und Anleitungen auf dem Gerät oder in der Benutzerdokumentation.
- Keine Zusatzgeräte** • Verwenden Sie keine Werkzeuge oder Zusatzgeräte, die nicht ausdrücklich vom Hersteller empfohlen wurden, da diese eine Gefahrenquelle darstellen können.

Instrucciones de seguridad • Español

- 


Este símbolo se utiliza para advertir al usuario sobre instrucciones importantes de operación y mantenimiento (o cambio de partes) que se desean destacar en el contenido de la documentación suministrada con los equipos.
- 


Este símbolo se utiliza para advertir al usuario sobre la presencia de elementos con voltaje peligroso sin protección aislante, que puedan encontrarse dentro de la caja o alojamiento del producto, y que puedan representar riesgo de electrocución.

Precaucion

- Leer las instrucciones** • Leer y analizar todas las instrucciones de operación y seguridad, antes de usar el equipo.
- Conservar las instrucciones** • Conservar las instrucciones de seguridad para futura consulta.
- Obedecer las advertencias** • Todas las advertencias e instrucciones marcadas en el equipo o en la documentación del usuario, deben ser obedecidas.
- Evitar el uso de accesorios** • No usar herramientas o accesorios que no sean específicamente recomendados por el fabricante, ya que podrían implicar riesgos.

安全须知 • 中文

- 

这个符号提示用户该设备用户手册中有重要的操作和维护说明。
- 

这个符号警告用户该设备机壳内有暴露的危险电压，有触电危险。

注意

- 阅读说明书** • 用户使用该设备前必须阅读并理解所有安全和使用说明。
- 保存说明书** • 用户应保存安全说明书以备将来使用。
- 遵守警告** • 用户应遵守产品和用户指南上的所有安全和操作说明。
- 避免追加** • 不要使用该产品厂商没有推荐的工具或追加设备，以避免危险。

Warning

- Power sources** • This equipment should be operated only from the power source indicated on the product. This equipment is intended to be used with a main power system with a grounded (neutral) conductor. The third (grounding) pin is a safety feature, do not attempt to bypass or disable it.
- Power disconnection** • To remove power from the equipment safely, remove all power cords from the rear of the equipment, or the desktop power module (if detachable), or from the power source receptacle (wall plug).
- Power cord protection** • Power cords should be routed so that they are not likely to be stepped on or pinched by items placed upon or against them.
- Servicing** • Refer all servicing to qualified service personnel. There are no user-serviceable parts inside. To prevent the risk of shock, do not attempt to service this equipment yourself because opening or removing covers may expose you to dangerous voltage or other hazards.
- Slots and openings** • If the equipment has slots or holes in the enclosure, these are provided to prevent overheating of sensitive components inside. These openings must never be blocked by other objects.
- Lithium battery** • There is a danger of explosion if battery is incorrectly replaced. Replace it only with the same or equivalent type recommended by the manufacturer. Dispose of used batteries according to the manufacturer's instructions.

Avertissement

- Alimentations** • Ne faire fonctionner ce matériel qu'avec la source d'alimentation indiquée sur l'appareil. Ce matériel doit être utilisé avec une alimentation principale comportant un fil de terre (neutre). Le troisième contact (de mise à la terre) constitue un dispositif de sécurité : n'essayez pas de la contourner ni de la désactiver.
- Déconnexion de l'alimentation** • Pour mettre le matériel hors tension sans danger, déconnectez tous les cordons d'alimentation de l'arrière de l'appareil ou du module d'alimentation de bureau (s'il est amovible) ou encore de la prise secteur.
- Protection du cordon d'alimentation** • Acheminer les cordons d'alimentation de manière à ce que personne ne risque de marcher dessus et à ce qu'ils ne soient pas écrasés ou pincés par des objets.
- Réparation-maintenance** • Faire exécuter toutes les interventions de réparation-maintenance par un technicien qualifié. Aucun des éléments internes ne peut être réparé par l'utilisateur. Afin d'éviter tout danger d'électrocution, l'utilisateur ne doit pas essayer de procéder lui-même à ces opérations car l'ouverture ou le retrait des couvercles risquent de l'exposer à de hautes tensions et autres dangers.
- Fentes et orifices** • Si le boîtier de l'appareil comporte des fentes ou des orifices, ceux-ci servent à empêcher les composants internes sensibles de surchauffer. Ces ouvertures ne doivent jamais être bloquées par des objets.
- Lithium Batterie** • Il a danger d'explosion s'il y a remplacement incorrect de la batterie. Remplacer uniquement avec une batterie du meme type ou d'un ype equivalent recommandée par le constructeur. Mettre au reut les batteries usages conformément aux instructions du fabricant.

Vorsicht

- Stromquellen** • Dieses Gerät sollte nur über die auf dem Produkt angegebene Stromquelle betrieben werden. Dieses Gerät wurde für eine Verwendung mit einer Hauptstromleitung mit einem geerdeten (neutralen) Leiter konzipiert. Der dritte Kontakt ist für einen Erdschluß, und stellt eine Sicherheitsfunktion dar. Diese sollte nicht umgangen oder außer Betrieb gesetzt werden.
- Stromunterbrechung** • Um das Gerät auf sichere Weise vom Netz zu trennen, sollten Sie alle Netzkabel aus der Rückseite des Gerätes, aus der externen Stromversorgung (falls dies möglich ist) oder aus der Wandsteckdose ziehen.
- Schutz des Netzkabels** • Netzkabel sollten stets so verlegt werden, daß sie nicht im Weg liegen und niemand darauf treten kann oder Objekte darauf- oder unmittelbar dagegengestellt werden können.
- Wartung** • Alle Wartungsmaßnahmen sollten nur von qualifiziertem Servicepersonal durchgeführt werden. Die internen Komponenten des Gerätes sind wartungsfrei. Zur Vermeidung eines elektrischen Schocks versuchen Sie in keinem Fall, dieses Gerät selbst öffnen, da beim Entfernen der Abdeckungen die Gefahr eines elektrischen Schlags und/oder andere Gefahren bestehen.
- Schlitze und Öffnungen** • Wenn das Gerät Schlitze oder Löcher im Gehäuse aufweist, dienen diese zur Vermeidung einer Überhitzung der empfindlichen Teile im Inneren. Diese Öffnungen dürfen niemals von anderen Objekten blockiert werden.
- Litium-Batterie** • Explosionsgefahr, falls die Batterie nicht richtig ersetzt wird. Ersetzen Sie verbrauchte Batterien nur durch den gleichen oder einen vergleichbaren Batterietyp, der auch vom Hersteller empfohlen wird. Entsorgen Sie verbrauchte Batterien bitte gemäß den Herstelleranweisungen.

Advertencia

- Alimentación eléctrica** • Este equipo debe conectarse únicamente a la fuente/tipo de alimentación eléctrica indicada en el mismo. La alimentación eléctrica de este equipo debe provenir de un sistema de distribución general con conductor neutro a tierra. La tercera pata (puesta a tierra) es una medida de seguridad, no puentearia ni eliminaria.
- Desconexión de alimentación eléctrica** • Para desconectar con seguridad la acometida de alimentación eléctrica al equipo, desenchufar todos los cables de alimentación en el panel trasero del equipo, o desenchufar el módulo de alimentación (si fuera independiente), o desenchufar el cable del receptáculo de la pared.
- Protección del cables de alimentación** • Los cables de alimentación eléctrica se deben instalar en lugares donde no sean pisados ni apretados por objetos que se puedan apoyar sobre ellos.
- Reparaciones/mantenimiento** • Solicitar siempre los servicios técnicos de personal calificado. En el interior no hay partes a las que el usuario deba acceder. Para evitar riesgo de electrocución, no intentar personalmente la reparación/mantenimiento de este equipo, ya que al abrir o extraer las tapas puede quedar expuesto a voltajes peligrosos u otros riesgos.
- Ranuras y aberturas** • Si el equipo posee ranuras o orificios en su caja/alojamiento, es para evitar el sobrecalentamiento de componentes internos sensibles. Estas aberturas nunca se deben obstruir con otros objetos.
- Batería de litio** • Existe riesgo de explosión si esta batería se coloca en la posición incorrecta. Cambiar esta batería únicamente con el mismo tipo (o su equivalente) recomendado por el fabricante. Desachar las baterías usadas siguiendo las instrucciones del fabricante.

警告

- 电源** • 该设备只能使用产品上标明的电源。设备必须使用有地线的供电系统供电。 第三条线（地线）是安全设施，不能不用或跳过。
- 拔掉电源** • 为安全地从设备拔掉电源，请拔掉所有设备后或桌面电源的电源线，或任何接到市电系统的电源线。
- 电源线保护** • 妥善布线， 避免被踩踏，或重物挤压。
- 维护** • 所有维修必须由认证的维修人员进行。设备内部没有用户可以更换的零件。为避免出现触电危险不要自己试图打开设备盖子维修该设备。
- 通风孔** • 有些设备机壳上有通风槽或孔，它们是用来防止机内敏感元件过热。 不要用任何东西挡住通风孔。
- 锂电池** • 不正确的更换电池会有爆炸的危险。必须使用与厂家推荐的相同或相近型号的电池。按照生产厂的建议处理废弃电池。

FCC Class A Notice

This equipment has been tested and found to comply with the limits for a Class A digital device, pursuant to part 15 of the FCC Rules. Operation is subject to the following two conditions: (1) this device may not cause harmful interference, and (2) this device must accept any interference received, including interference that may cause undesired operation. The Class A limits are designed to provide reasonable protection against harmful interference when the equipment is operated in a commercial environment. This equipment generates, uses, and can radiate radio frequency energy and, if not installed and used in accordance with the instruction manual, may cause harmful interference to radio communications. Operation of this equipment in a residential area is likely to cause harmful interference, in which case the user will be required to correct the interference at his own expense.

NOTE *This unit was tested with shielded cables on the peripheral devices. Shielded cables must be used with the unit to ensure compliance with FCC emissions limits.*

Table of Contents

Chapter One • Introduction	1-1
About This Manual	1-2
About the TLP 700MV and TLP 700TV	1-2
Features	1-3
Requirements	1-4
Software	1-4
Hardware	1-4
Chapter Two • Panel Features and Cabling	2-1
TLP 700MV Front Panel Features and Operations	2-2
TLP 700MV Rear Panel Features and Connections	2-4
TLP 700TV Front Panel Features and Operations	2-6
TLP 700TV Rear Panel Features and Connections	2-7
With stand attached	2-7
TLP 700TV Base Features	2-8
Chapter Three • Initial Configuration	3-1
Internal On-Screen Menus	3-2
Main	3-2
Volume	3-3
Time	3-3
Network	3-4
Video	3-4
Screen touch calibration	3-5
Chapter Four • Configuration Software	4-1
About the Software	4-2
Installing the Software	4-2
GUI Configurator and Global Configurator installation	4-2
Updating the Firmware	4-3
Updating firmware using the Extron Firmware Loader utility	4-3
Updating firmware from a web browser	4-4
Using the TouchLink Panel Web Pages	4-5
Using Global Configurator	4-11

Table of Contents, cont'd

Appendix A • Specifications, Part Numbers, Accessories	A-1
TLP 700MV Specifications	A-2
TLP 700TV Specifications	A-5
Part Numbers and Accessories.....	A-8
Included parts.....	A-8
Optional parts.....	A-8
Cables.....	A-8
 Appendix B • Mounting	 B-1
Mounting the TLP 700MV	B-2
Wall mounting.....	B-2
Buttonless faceplate	B-4
Mounting the TLP 700TV	B-5
Desktop mounting	B-5
 Appendix C • Reset Modes	 C-1
Reset Modes	C-2
 Appendix D • Button Labels	 D-1
Installing or Replacing Button Labels	D-2
Button Label Generator software	D-2
Installing the Button-Label Generator software	D-2
Using the Button-Label Generator software	D-3
Button labeling procedure	D-4

All trademarks mentioned in this manual are the properties of their respective owners.

68-1378-01
Rev. A
08 09



TLP 700MV and TLP 700TV

1 Chapter One

Introduction

About This Manual

About the TLP 700MV and TLP 700TV

Features

Requirements

Introduction

About This Manual

This manual describes the function, installation and operation of the TouchLink TLP 700MV and TLP 700TV panels. Unless otherwise stated, the terms “TLP 700 series” and “TLP 700” refer to either model.

About the TLP 700MV and TLP 700TV

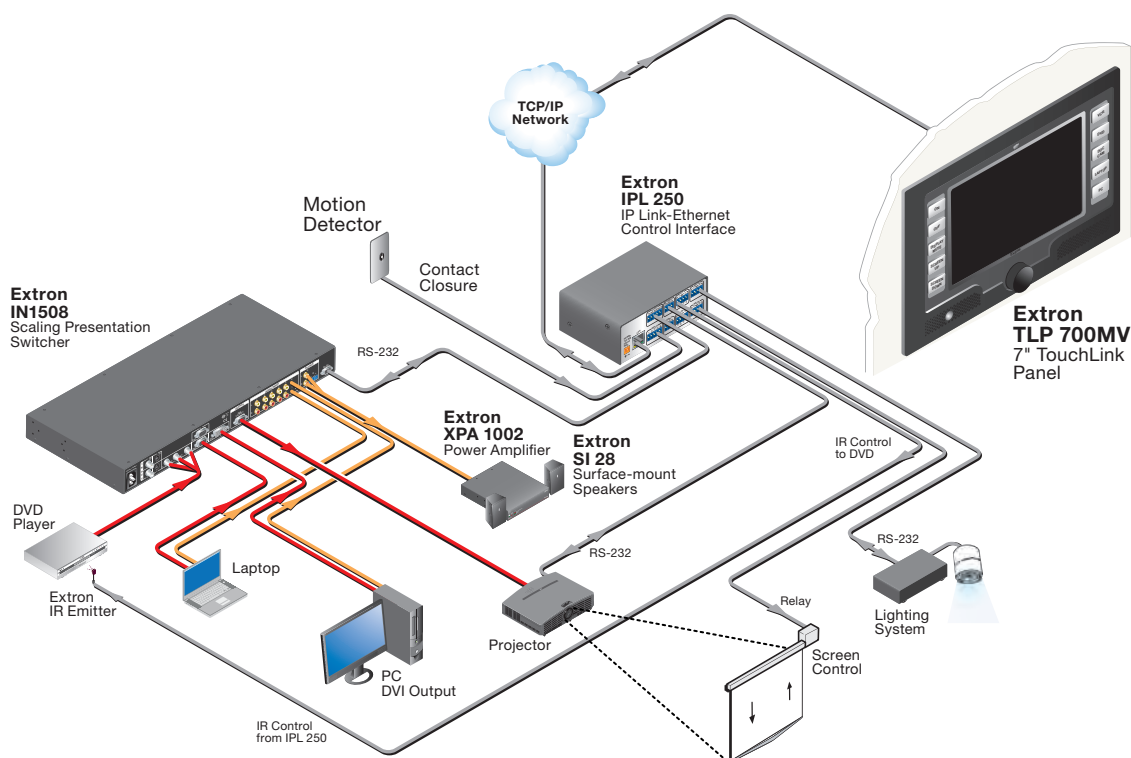
The Extron TLP 700MV is a wall mounted TouchLink panel. The screen displays graphic objects and text, which are associated with user-defined functions. The touch overlay allows the user to initiate or activate functions by touching the objects on the screen.

The Extron TLP 700TV comes with a stand that allows it to be placed on a desktop. If the stand is removed, the unit can be VESA-mounted on a wall or furniture, using the Extron VM 700T kit (part #70-692-01).

Both units have ten push buttons (five along each side of the screen) that allow common, user-defined, functions to be activated independently of the LCD screen.

An encoder knob, motion sensor, light sensor, and a speaker provide volume control, auto dimming, sleep mode, and audible feedback.

The GUI Configurator software allows the user to use existing templates or to design interfaces on their PC and upload the completed project to the TouchLink panel. The user can define the graphics and the functions associated with those graphics, providing versatility and adaptability to the configuration and control of an AV system.



A typical TLP 700MV application

Features

TLP 700MV and TLP 700TV features include:

7 inch LCD screen — displays a range of graphic objects and text.

Video preview — allows composite or S-video previews.

Touch screen overlay — provides simple and intuitive control over a range of functions by touching the icons displayed on the screen.

GUI Configurator Software — allows the user to design a custom graphical user interface and associate a range of different functions with objects in that display. No programming knowledge is needed.

Easy configuration and flexibility — on screen graphics and text, as well as the functions associated with them, can be easily changed to adapt the control panel to the system's evolving needs, avoiding the need for additional control modules.

Ten buttons — for common, user-defined functions.

Ethernet connection — provides an inexpensive, easily installed, cabling option that allows products located anywhere else on the network to be connected.

Compatible with most Extron IP Link products — easily integrated into existing systems.

Front panel encoder knob — primarily for volume control, but can be re-programmed for other functions.

Light sensor — adjusts LCD screen backlighting to compensate for ambient lighting.

Motion sensor — When no motion is detected for a user-determined period of time, the unit enters sleep mode to conserve power. When a user approaches the screen, the panel is reactivated.

Loudspeaker — provides audible feedback in response to events triggered by the user.

Multiple mounting options — The TLP 700MV can be wall-mounted or furniture-mounted. Using the optional Extron RM 700M kit (part #70-683-01), it can also rack-mounted. The TLP 700TV comes with a stand that allows it to be placed on a desktop. If the stand is removed, the unit can be VESA-mounted on a wall or furniture using the optional Extron VM 700T kit (part #70-692-01) and a third-party VESA mount arm.

Requirements

Software

The following system requirements are recommended for running GUI Configurator or Global Configurator 3:

- Operating System – Microsoft® Windows® XP
- CPU – Intel® 1.2 GHz or compatible processor
- Memory – 1 GB of RAM
- Hard Disk space – 100 MB (including 280 MB for the .NET 2.0 Framework)
- Screen Resolution – 1024 x 768 resolution at 32-bit color
- Network Connection – 100 Mbps
- Windows-compatible mouse (or other pointing device)

Hardware

An Extron IP Link control interface must also be connected to the same network domain as the TouchLink panel. Suggested models include:

- IPL T S series (e.g. IPL T S4)
- IPL 250
- IPL T CR 48
- IPL T SFI 244.



TLP 700MV and TLP 700TV

Chapter Two

Panel Features and Cabling

TLP 700MV Front Panel Features and Operations

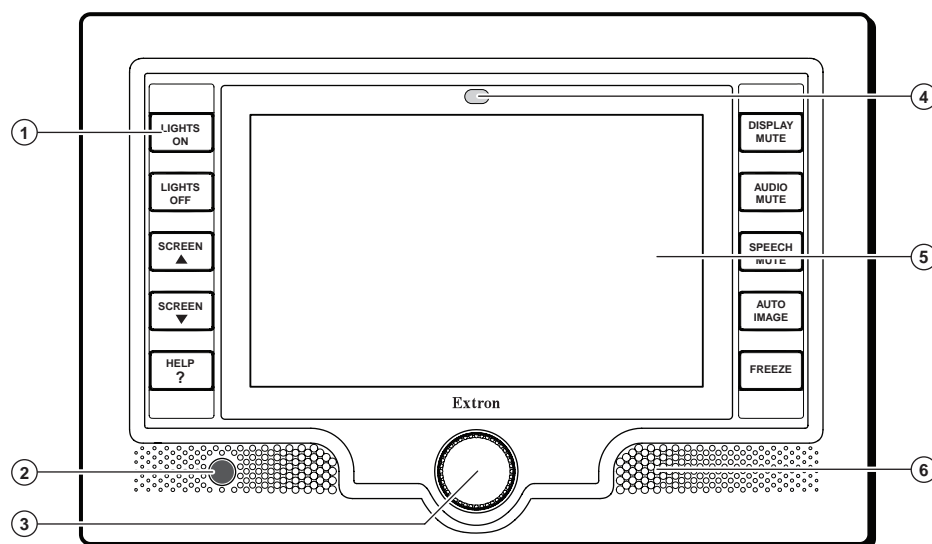
TLP 700TV Front Panel Features and Operations

TLP 700MV Rear Panel Features and Connections

TLP 700TV Rear Panel Features and Connections

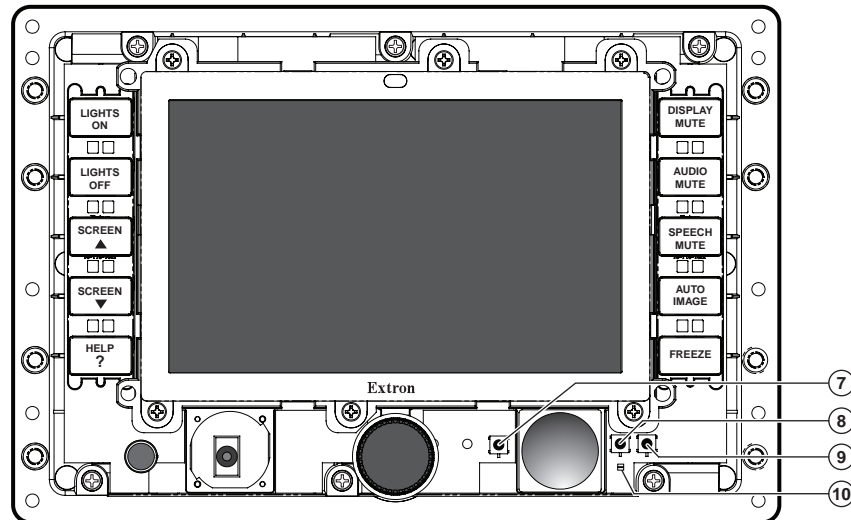
Panel Features and Cabling

TLP 700MV Front Panel Features and Operations



- ① **Buttons** — These ten backlit push-buttons (five on either side of the screen) can be configured to perform user-defined functions using the Extron Global Configurator software.
- ② **Motion Sensor** — is capped with a small Fresnel lens that focuses light onto the sensor. When no motion has been detected for a user-defined period of time, the unit goes into sleep mode. When motion is detected in the vicinity of the panel, the screen display is restored and all buttons are active.
- ③ **Encoder Knob** — intended for volume control but it can be configured for other functions.
- ④ **Light Sensor** — monitors the level of ambient light and adjusts the screen brightness and button backlighting.
- ⑤ **LCD screen** — The 800 x 480 resolution LCD screen has a touch overlay. A graphic user interface is designed using the Extron GUI Configurator software to display buttons, text, or icons on the screen. These can be configured for a range of user-defined functions, using the Extron Global Configurator software.
- ⑥ **Speaker** — A single 2 W speaker provides audible feedback for the user.

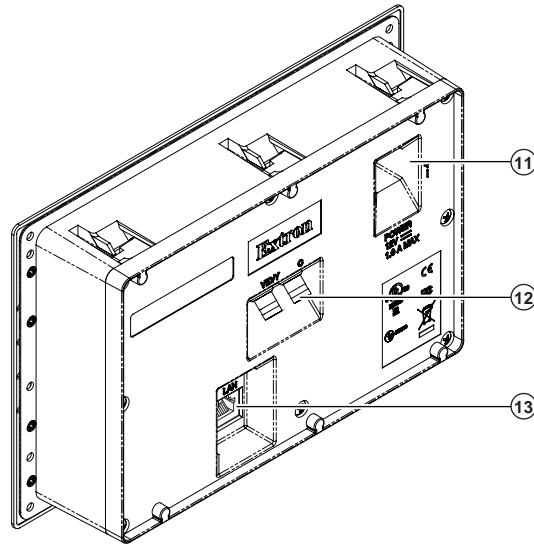
There are three recessed buttons placed behind the faceplate. These buttons are used for configuration of the unit and resetting parameters to factory defaults:



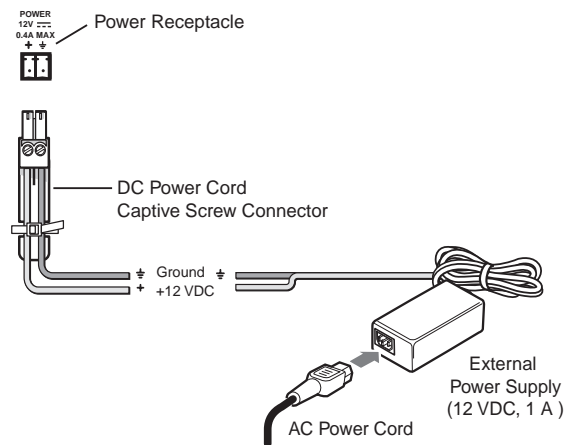
- ⑦ **Reboot button** — recessed behind the faceplate. This shuts down and restarts the unit without changing any of the parameters.
- ⑧ **Reset button** — recessed behind the faceplate. This button allows the unit to be reset in any of four different modes. For further information see “Reset Modes” in appendix C.
- ⑨ **Menu button** — recessed behind the faceplate. It activates the on screen menus for calibrating the unit
- ⑩ **Reset LED** — recessed behind the faceplate. It is visible only when the faceplate has been removed. It lights as an indicator for the Reset modes. For further information see “Reset Modes” in appendix C.

Panel Features and Cabling, cont'd

TLP 700MV Rear Panel Features and Connections



- ⑪ **Power Connector** — Connect the two pole, 3.5 mm captive screw connector from the power supply (provided with the unit) to the power supply socket on the rear panel. The power supply provides 12 VDC and 1.0 A.



CAUTION

The power supply shall not be permanently fixed to the building structure or similar structures.

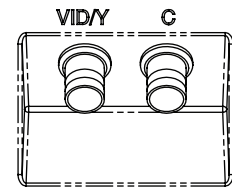
The power supply shall not be located within environmental air handling spaces or within the wall cavity.

The installation shall be in accordance with the applicable provisions of the National Electrical Code ANSI/NFPA 70, Article 725 and the Canadian Electrical Code, Part 1, Section 16.

The power supply is to be located within the same vicinity as the Extron A/V processing equipment in an ordinary location, Pollution Degree 2, secured to the equipment rack within the dedicated closet, podium or desk.

- ⑫ **Video Input** — Connect an S-video or composite video source to the unit, using these two BNC connectors:

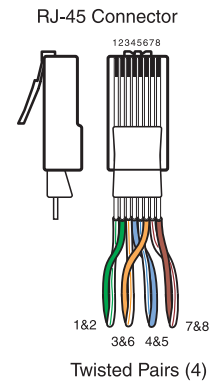
- For S-video, connect the Y (luminance) signal to the VID/Y input and the C (chrominance) signal to the C input.
- For composite video, connect the input to the VID/Y input.



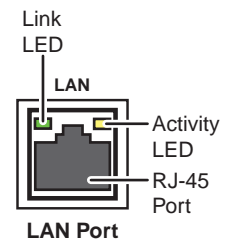
- ⑬ **Network Connector** — The TLP 700MV connects to an Ethernet LAN using a twisted pair cable, terminated with an RJ-45 connector (see the figure at right). Use a straight-through Ethernet cable to connect the panel to a switch or router. Use a crossover cable to connect the panel directly to a computer.

Plug one end of the cable into the RJ-45 socket and the other end into a network switch, hub, or router that is connected to an Ethernet LAN or the Internet.

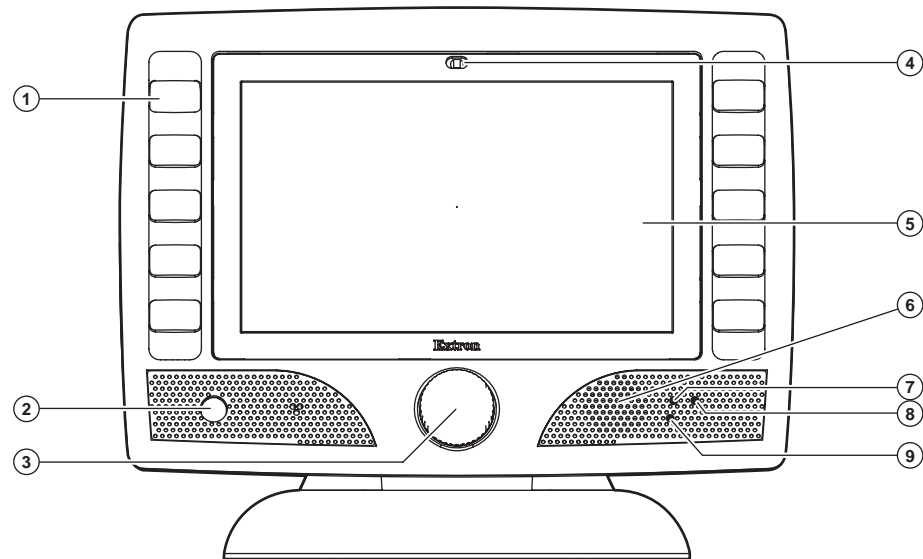
An Extron IP Link control interface must also be connected to the same network domain. Suggested models are listed on page 1-4.



The LAN port socket (see the figure at right) has two LED lights. The Link LED will light green to indicate a good network connection. The Activity LED will blink yellow when network activity is occurring.



TLP 700TV Front Panel Features and Operations



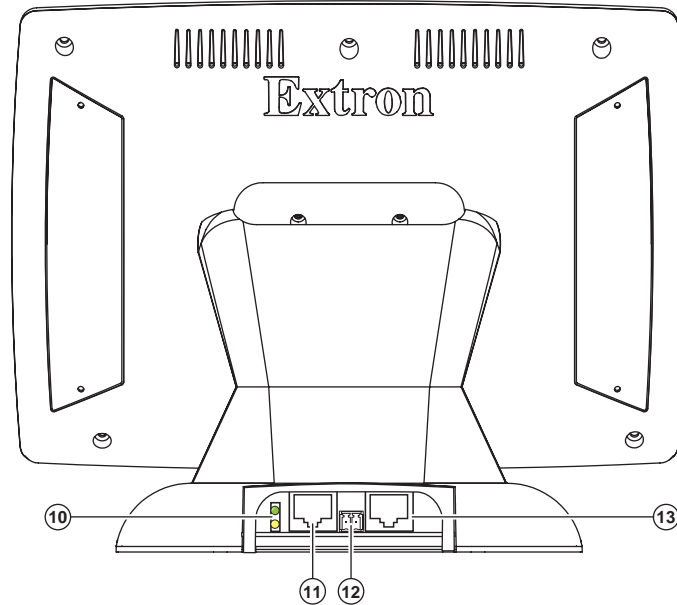
- ① **Buttons** — These ten backlit push-buttons (five on either side of the screen) can be programmed using the Extron Global Configurator software, to control commonly used functions.

Information about creating button labels can be found in appendix D.

- ② **Motion Sensor** — is capped with a small Fresnel lens that focuses light onto the sensor. When no motion has been detected for a user-defined period of time, the unit goes into sleep mode. When motion is detected in the vicinity of the panel, the sleep mode is overridden and the screen display is restored.
- ③ **Encoder Knob** — intended for volume control but it can be reprogrammed to control other functions.
- ④ **Light Sensor** — monitors the level of ambient light and adjusts the screen brightness and button backlighting.
- ⑤ **LCD screen** — The 800 x 480 resolution LCD screen has a touch overlay. A graphic user interface is designed using the Extron GUI Configurator software to display buttons, text, or icons on the screen. These can be configured for a range of user-defined functions, using the Extron Global Configurator software.
- ⑥ **Speaker** — A single 2 W speaker provides audible feedback for the user.
- ⑦ **Reset buttons** — recessed behind the faceplate. It allows the unit to be reset in any of four different modes. For further information see “Reset Modes” in appendix C.
- ⑧ **Menu button** — recessed behind the faceplate. It activates the on screen menus for calibrating the unit.
- ⑨ **Reset LED** — recessed behind the faceplate. It lights as an indicator for the Reset modes. For further information see “Reset Modes” in appendix C.

TLP 700TV Rear Panel Features and Connections

With stand attached



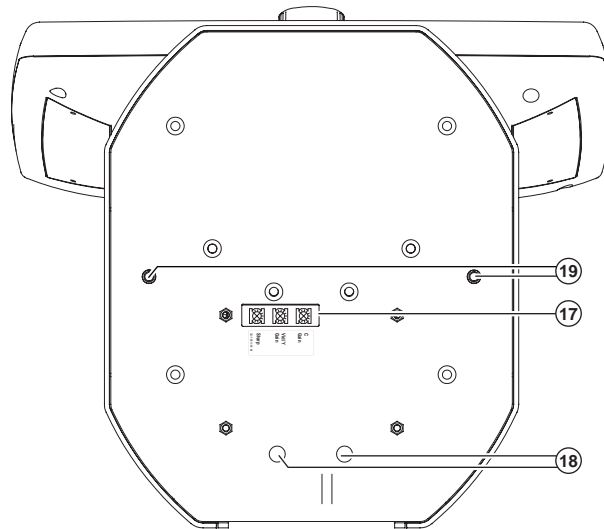
The following connections are available through the back panel when the stand is in place:

- ⑩ **LED lights** —The Link LED will light green to indicate a good network connection. The Activity LED will blink yellow when network activity is occurring.
- ⑪ **RJ 45 connector to LAN** — Use straight-through twisted pair cable to connect the TLP 700TV to a network switch or router. Use a crossover cable to connect the panel directly to a PC. An Extron IP Link control interface must be connected to the same network domain. A list of suggested models is given on page 1-4.
- ⑫ **Power connector** — Connect the 12 VDC, 3 A power supply (provided) to this 2-pole captive screw connector.
- ⑬ **RJ 45 connector to Extron MTP Transmitter** — Twisted pair input provides video and audio input.

NOTE *Audio input is available only from an Extron MTP transmitter through the RJ-45 connector in the unit's base. If the base is removed from the TLP 700TV, connections are via BNC connectors and there is no audio input.*

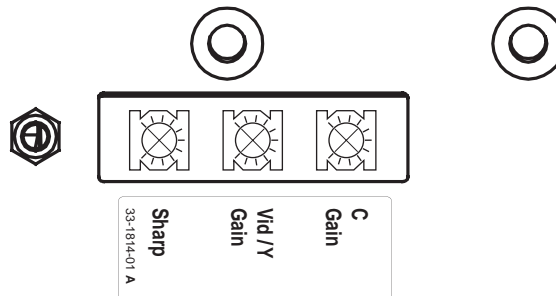
Panel Features and Cabling, cont'd

TLP 700TV Base Features



The TLP 700TV stand, which is removed during VESA mounting, has:

- ①⑦ **Three adjustable potentiometers** — These are used to control sharpness, and gain for both S-video luminance (Y), and S-video chrominance (C). If a composite video signal is being used, the gain is controlled by the center potentiometer (Vid/Y).



- ①⑧ **Access for disconnecting RJ-45 connectors** — When RJ-45 connectors are covered with a protective boot, it can be difficult to remove them from their sockets. The two holes are directly underneath the two RJ-45 jacks (see page 2-7). Pushing the tip of a pen or pencil through the holes makes it easy to remove the RJ-45 connectors from their sockets.
- ①⑨ **Security mounting** — If required, secure the unit to the desktop, using two screws, as described on page B-3.



TLP 700MV and TLP 700TV

Chapter Three

Initial Configuration

Internal On-Screen Menus

Initial Configuration

Internal On-Screen Menus

When the TouchLink Panel first has power applied, the unit boots up and displays the opening screen. To access the on-screen menus, press the Menu button, which is located just below the screen (see page 2-3 for the TLP 700MV or page 2-6 for the TLP 700TV).

The menus open at the “Main” screen. There are five different screens (Main, Volume, Time, Network, and Video) that can be selected by pressing the appropriate button at the left side of the screen. There is also an Exit button at the bottom left corner of the screen for leaving the menus.

Main



The Sleep timer determines how long the panel will be inactive before it enters Sleep mode, when the screen goes dark to save power. Press the Down or Up buttons or use the volume control knob to adjust the time from 0 to 50,000 seconds (in 10 second increments). The time that is currently selected is shown just above the buttons.

The screen may need a high level of backlighting to read the screen when ambient lighting is high. With low ambient lighting, the backlighting should be low.

Auto Backlight provides a suitable amount of backlighting calculated from the amount of ambient light detected by the light detector.

When Auto Backlight is set to Off, Backlight allows the backlighting to be set manually from 0 to 100%. Use the volume control knob or press the Down or Up buttons. The current value is shown just above the buttons.

NOTE When Auto Backlight is set to On, changing the percentage of Backlight will not affect the amount of backlighting.

LED Backlight lights the ten buttons next to the screen.

Wake on Motion activates the panel from Sleep mode when motion is detected near the unit.

Use the on-screen buttons to toggle the Auto Backlight, LED Backlight, or Wake on Motion options between Off and On.

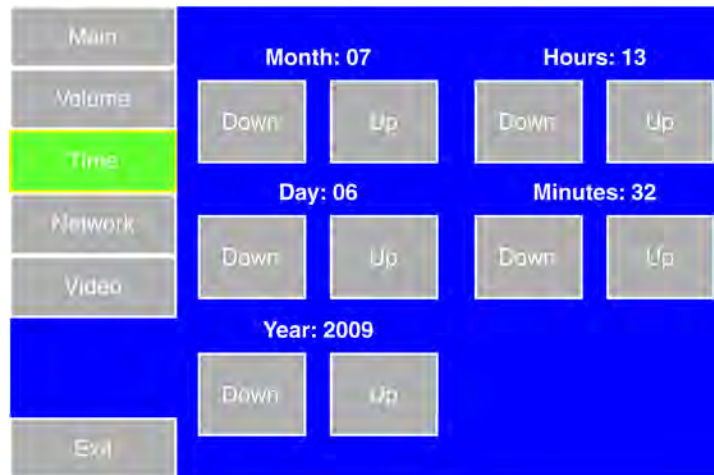
Volume



Use the Down and Up buttons or the volume control knob to adjust:

- Master volume between 0 and 255
- Click between 0 and 255
- Sounds between 0 and 255
- Line In between 0 and 255

Time

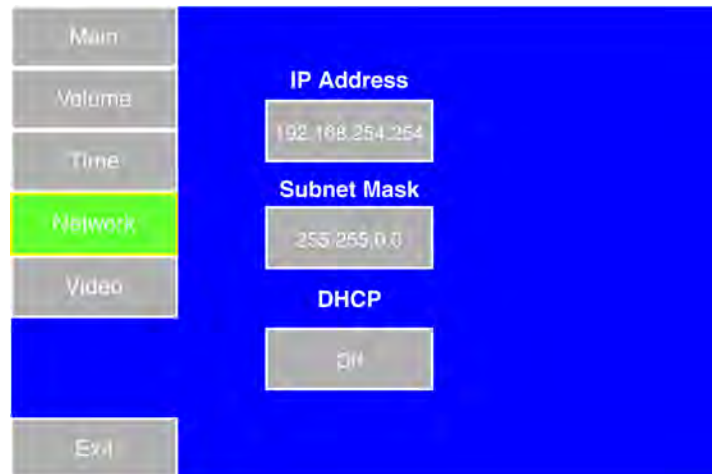


Use the Down and Up buttons or the volume control knob to adjust the Month, Day, Year, Hours, and Minutes.

NOTE The Hours value uses the 24 hour clock. For 10 am, set hours to 10; for 10 pm, set hours to 22.

Initial Configuration, cont'd

Network



Set the IP Address or Subnet Mask by pressing the appropriate button. An on-screen keypad appears that allows the user to select “Clear”, digits between 0-9, and “.” (dot).

NOTE The factory default IP address for the TLP 700MV is 192.168.254.254. The default subnet mask is 255.255.0.0. Consult with your IT Department to ensure these addresses are correctly assigned.

Press the On and Off buttons to enable or disable Dynamic Host Configuration Protocol (DHCP). This determines whether the unit will have a permanent IP address or will have one provided by the network, when required.

Video



The small gray rectangle provides a video preview window that allows the user to adjust the video properties.

Use the Down and Up buttons or the volume control knob to adjust:

- Contrast between 0 and 127 (default, 64)
- Color between 0 and 127 (default, 64)
- Brightness between 0 and 255 (default, 128)
- Tint between 0 and 255 (default, 128)

Screen touch calibration

After setting the values, press the Menu button a second time to calibrate the touch area of the touch panel.



Press on the green box until the color reverts to grey with a white border and a second box is highlighted. Repeat until all four boxes have been pressed.

At that point the screen returns to the Main menu (see page 3-2).

To exit from the on-screen menus, press the Exit button in the bottom left corner of the menu screens.

Initial Configuration, cont'd



TLP 700MV and TLP 700TV

4

Chapter Four

Configuration Software

About the Software

Installing the Software

Updating the Firmware

Using the TouchLink Panel Web Pages

Using GUI Configurator

Using Global Configurator

Configuration Software

About the Software

Designing a graphical user interface (GUI) for the TouchLink panel takes two steps:

- Design the layout of the text and graphics using GUI Configurator
- Assign functions to the text and graphics using Global Configurator

The GUI Configurator Software is a Windows-based application. The interface is designed either by customizing an existing template or by designing an entirely new interface. GUI Configurator offers several templates that are designed to manage control system devices.

Once the GUI has been designed on a PC, the project is saved, built, and uploaded to the TouchLink Panel to verify what it looks like on the Touch Screen. It is then imported from the Touch Screen unit to Global Configurator where control functions are assigned to the text and graphic items in the layout. After assigning the control functions, the project is rebuilt and uploaded to the controller.

These two programs provide versatility and adaptability for configuration and control of an AV system as it grows and evolves.

Installing the Software

GUI Configurator and Global Configurator installation

Insert the disk provided into the computer's CD/DVD ROM drive. If the setup program does not start automatically, run Launch.exe from the CD/DVD ROM directory in Windows "My Computer". Select the **Software** tab, locate the GUI Configurator program and click **Install**. Follow the on screen instructions.

By default, the Installer program creates and places the GUI Configurator program in the C:\Program Files\Extron\GUI Configurator folder. An icon may also be placed on the Windows desktop.

If required, locate the Global Configurator program on the disk or Web site and install that also. By default, the Installer program creates and places the Global Configurator program in the C:\Program Files\Extron\GCx.x folder, where x.x represents the current version of the Global Configurator program. During installation, there is an option to place an icon on the Windows desktop.

Both programs can be downloaded from the Extron Web site (www.extron.com). Select the **Download** tab and click on the **Software** option in the sidebar at the left. Navigate to GUI Configurator or Global Configurator and click **Download** next to the program. Follow the on-screen instructions to complete installation. A folder is created on the C drive and an icon may be placed on the desktop.

Updating the Firmware

Firmware for the TLP 700 can be upgraded using the Extron Firmware Loader or using your web browser. Before starting, consult your IT team and ensure that the TLP 700 has a unique IP address.

Updating firmware using the Extron Firmware Loader utility

1. Power on a computer with internet access.
2. Ensure the computer and the TLP 700 are connected to the same network.
3. Install the Extron Firmware Loader utility onto the computer if it is not already present. This is on the software disk that ships with unit or can be downloaded, free of charge, from the Extron Web site (www.extron.com).
 - To install from the disk, insert the disk into the computer's CD/DVD ROM drive and follow the same procedure as for installing the GUI Configurator and Global Configurator programs (see page 4-2).
 - To install from the Extron Web site (www.extron.com), select the **Download** tab and click on the **Software** tab, locate the Firmware Loader and click **Download**. Follow the on-screen instructions to complete installation.
4. From the same site, download the firmware for the TouchLink panel unit. Click on the **Download** tab on the Extron home page and select the **Firmware** option.



5. Navigate to the TLP 700 firmware and click **Download**.
6. This will download the firmware to your computer. Make a note of the folder in which the firmware file is saved.
7. Open the Extron Firmware Loader by clicking on the desktop icon.
8. Choose the **TCP/IP** tab.
9. Enter the IP address for the TLP 700, a Telnet port number, and, if necessary, a password. Click **OK**.
10. Click the **File** menu and select **Open**. Navigate to the folder where the firmware file was saved (see step 6).
11. Click **Begin**. The firmware transfer begins and takes approximately 3 minutes.
12. When the "Complete!" message appears, click the **Exit** button and exit the Firmware Loader.

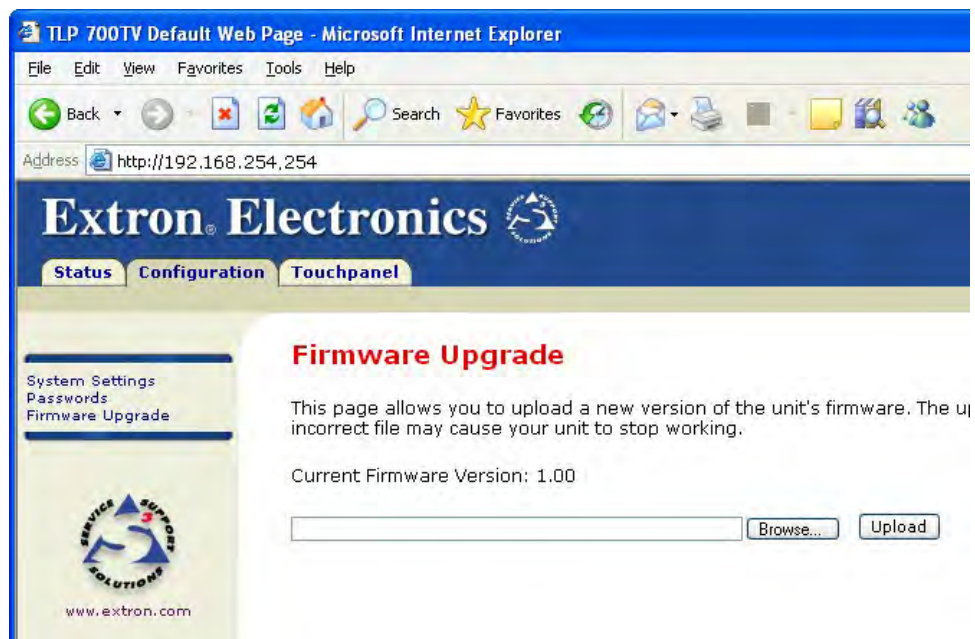
Configuration Software, cont'd

Updating firmware from a web browser

1. Power on a computer with internet access.
2. Ensure the computer and the TLP 700 are connected to the same network.
3. From the Extron Web site (www.extron.com), download the firmware for the TLP 700. Click on the **Download** tab on the Extron home page and select the **Firmware** option.



4. Navigate to the TLP 700 firmware and click **Download**.
5. This will download the firmware to your computer. Make a note of the folder in which the firmware file is saved.
6. Open your browser and type the IP address of the TLP 700 unit into the address box. The browser opens the TouchLink Panel Web pages (see page 4-5).

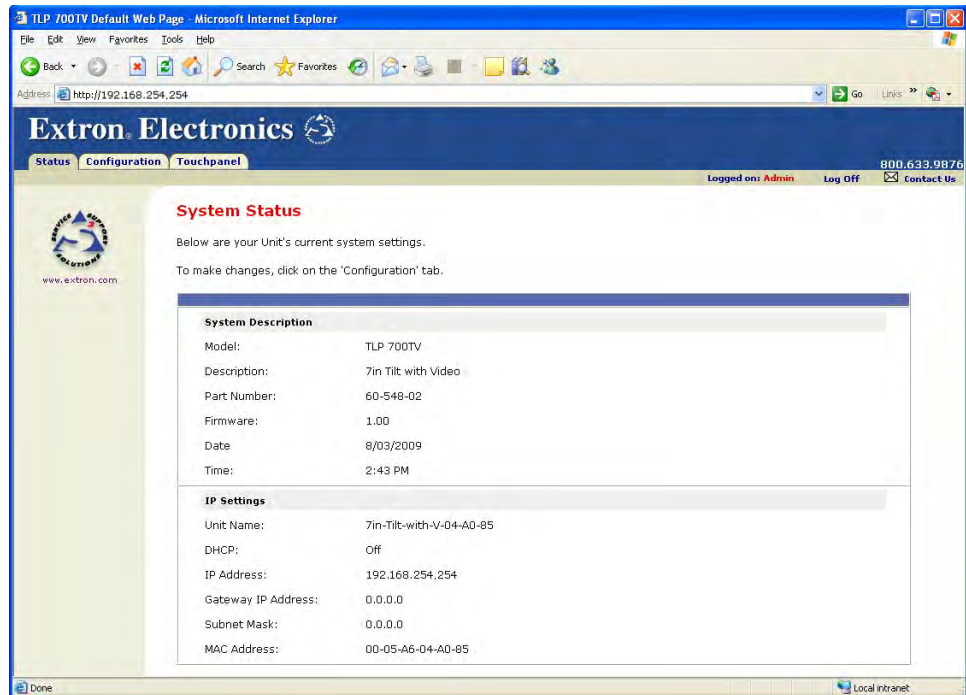


7. Click on the **Configuration** tab at the top of the page and then select **Firmware Upgrade** from the bar on the left.
8. Use the Browse button to navigate to the firmware file (see step 5).
9. Click **Upload**. The touch panel screen will show the message "Firmware Uploading... Please Wait...". When the firmware is uploaded, there is a message saying "ReStarting...". Once the firmware is installed, the panel can be calibrated using the on-screen menus (see page 3-2) or the TouchLink panel Web pages (see page 4-5).

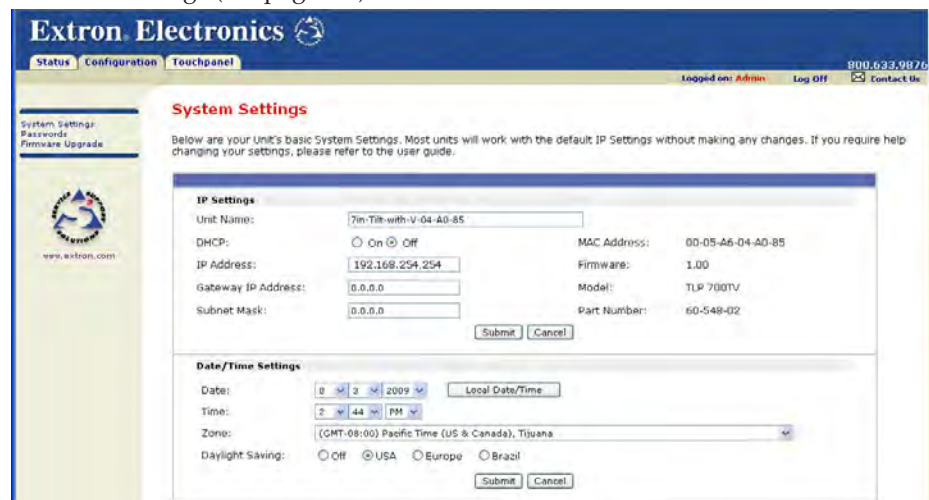
Using the TouchLink Panel Web Pages

The TLP 700MV and TLP 700TV TouchLink panels have default Web pages that can be used to read and change the current settings of the panels. The Web pages can be accessed as follows:

1. Open your browser and type the IP address of the TLP 700 unit into the address box. The browser opens the TouchLink Panel Status page, which is read-only and provides basic information about the model, date and time, and IP settings.

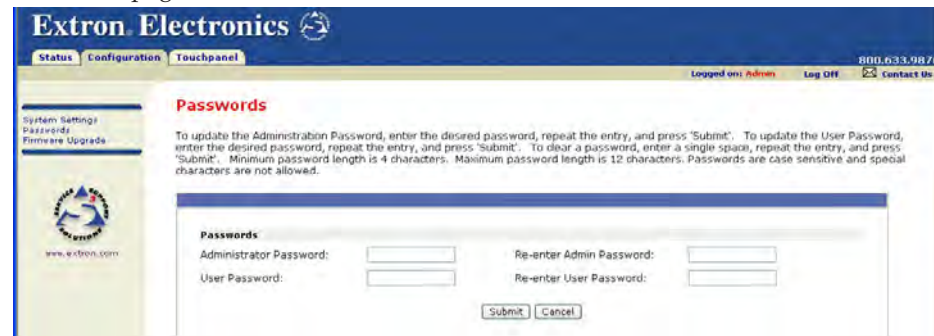


2. Click on the **Configuration** tab and select the **System Settings** page, which allows the user to modify information about the IP settings and the date and time settings. These correspond to the Network settings (see page 3-4) and Time settings (see page 3-5) in the on-screen menus.



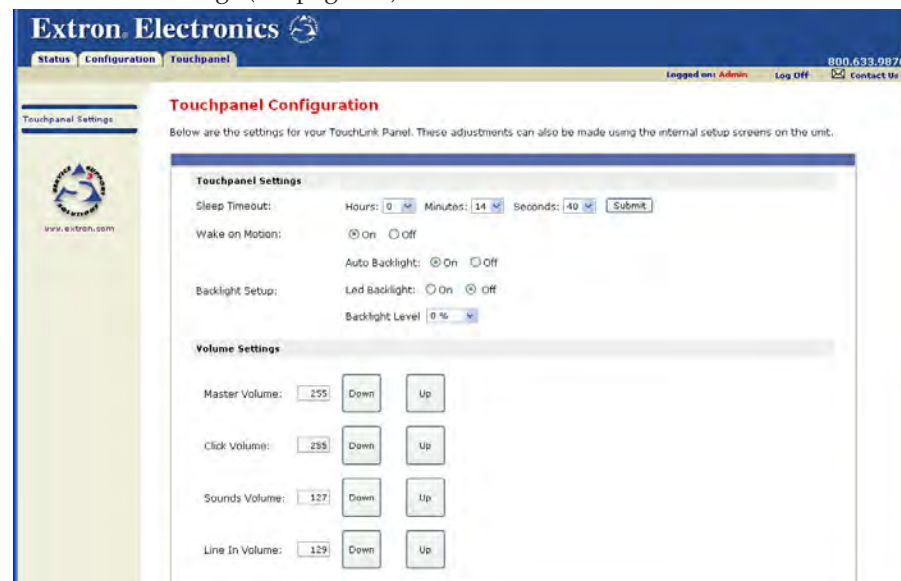
Configuration Software, cont'd

3. Selecting the **Passwords** page allows the user to set passwords for an Administrator and a User. To set a password, follow the instructions at the top of the page.



The screenshot shows the 'Passwords' configuration page in the Extron Electronics web interface. The page has a blue header with the Extron logo and navigation tabs for 'Status', 'Configuration', and 'Touchpanel'. The 'Configuration' tab is selected. On the left, there is a sidebar with links for 'System Settings', 'Passwords', and 'Firmware Upgrade'. The main content area is titled 'Passwords' and contains instructions: 'To update the Administration Password, enter the desired password, repeat the entry, and press "Submit". To update the User Password, enter the desired password, repeat the entry, and press "Submit". To clear a password, enter a single space, repeat the entry, and press "Submit". Minimum password length is 4 characters. Maximum password length is 12 characters. Passwords are case sensitive and special characters are not allowed.' Below the instructions are four input fields: 'Administrator Password', 'Re-enter Admin Password', 'User Password', and 'Re-enter User Password'. At the bottom are 'Submit' and 'Cancel' buttons.

4. To upgrade the unit's firmware, select **Firmware Upgrade** and follow the instructions on page 4-4.
5. Click on the Touch panel tab, which allows the user to alter the touch panel and volume settings. These correspond to the Main settings (see page 3-2) and Volume settings (see page 3-3) in the on-screen menus.



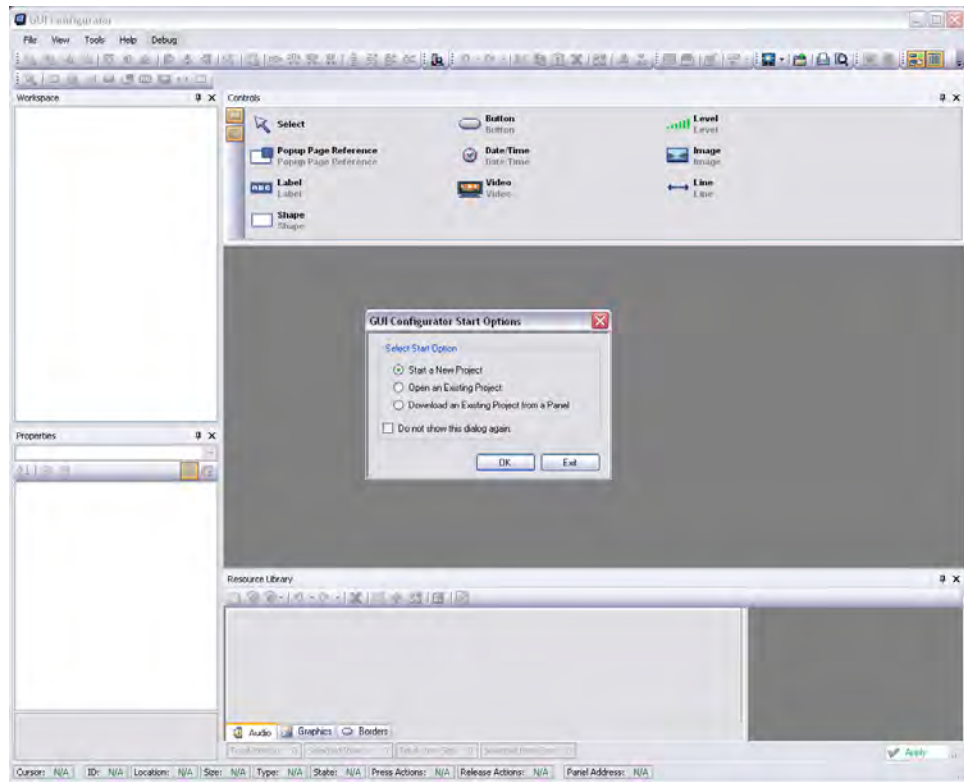
The screenshot shows the 'Touchpanel Configuration' page in the Extron Electronics web interface. The page has a blue header with the Extron logo and navigation tabs for 'Status', 'Configuration', and 'Touchpanel'. The 'Configuration' tab is selected. On the left, there is a sidebar with links for 'System Settings', 'Passwords', and 'Firmware Upgrade'. The main content area is titled 'Touchpanel Configuration' and contains the text: 'Below are the settings for your TouchLink Panel. These adjustments can also be made using the internal setup screens on the unit.' Below this text are two sections: 'Touchpanel Settings' and 'Volume Settings'. The 'Touchpanel Settings' section includes 'Sleep Timeout' (Hours: 0, Minutes: 14, Seconds: 40, Submit), 'Wake on Motion' (On/Off), 'Auto Backlight' (On/Off), 'Backlight Setup' (Led Backlight: On/Off, Backlight Level: 0%), and 'Volume Settings' (Master Volume: 255, Click Volume: 255, Sounds Volume: 127, Line In Volume: 129, each with Down/Up buttons).

Using GUI Configurator

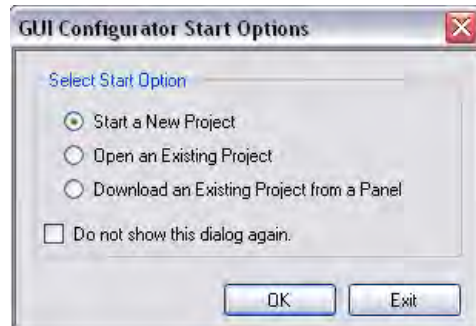
This section provides an overview of the GUI Configurator program. For complete information about the program, consult the GUI Configurator Help File (click on **Contents** in the Help Menu or press the F1 key while within the program).

To use the GUI Configurator program, follow these instructions:

1. Click on the desk top icon. A splash screen appears momentarily and then the program opens at the main screen



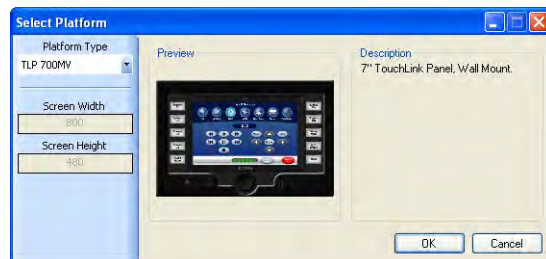
Configuration Software, cont'd



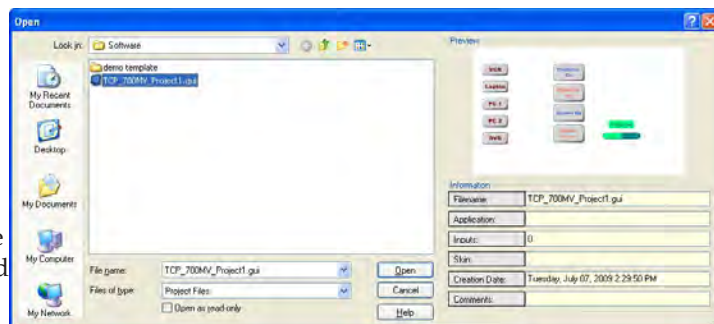
2. Use the GUI Configurator Start Options dialog box to select one of the following options:

- **Start New Project** — Opens a new project without a template.

Choose the TouchLink panel type from the drop down menu and click **OK**

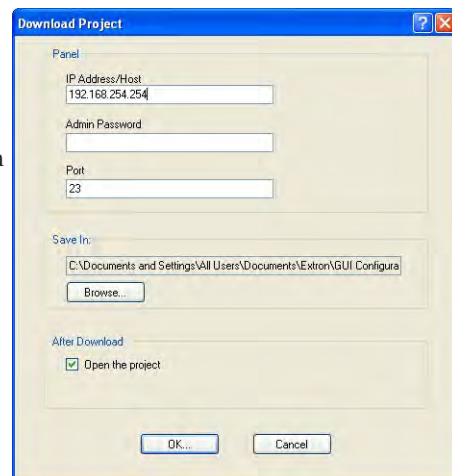


- **Open an Existing Project** — Opens an existing project for modification. Navigate to the existing file and highlight it.

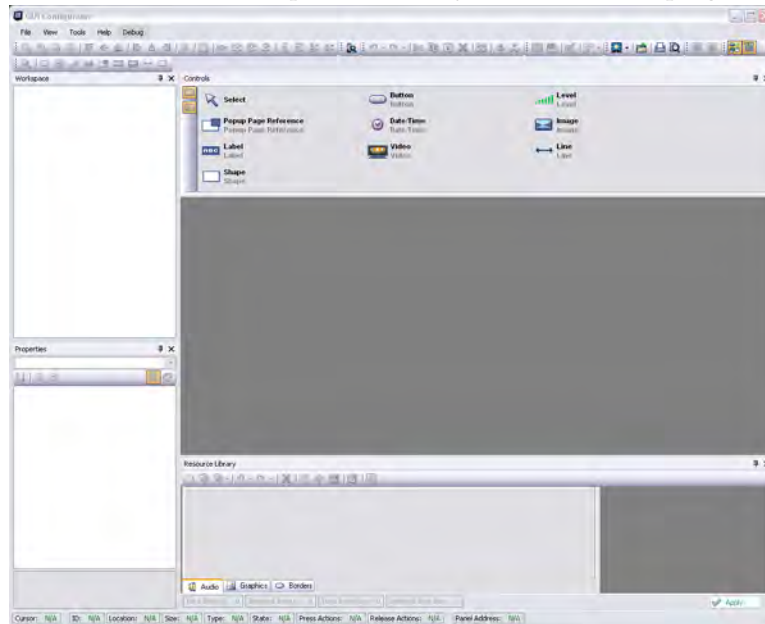


A preview with information about the file appears in the pane on the right. Click on **Open** to open the file.

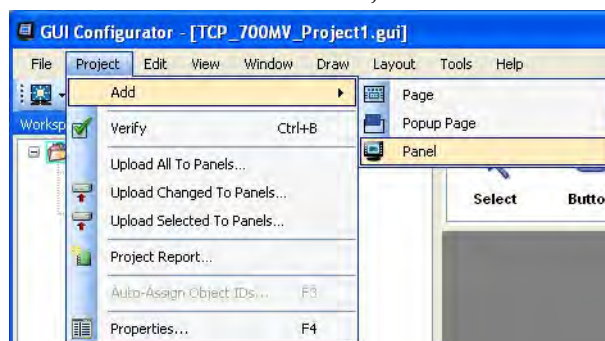
- **Download an Existing Project from a Panel** — Downloads a file that has been uploaded to a panel. Enter the IP address of the panel. Use the **Browse** button to navigate to a folder where the file will be saved. Check **Open the project**. Click on **OK**.



3. Depending on which option was selected in step 2, GUI Configurator opens to a new or an existing project. The initial screen is divided into a series of panes offering a range of tools that can be used to design or modify the project. For full details on how to use these tools, consult the Help file (in the Help Menu click on **Contents** or press the F1 key while within the program).

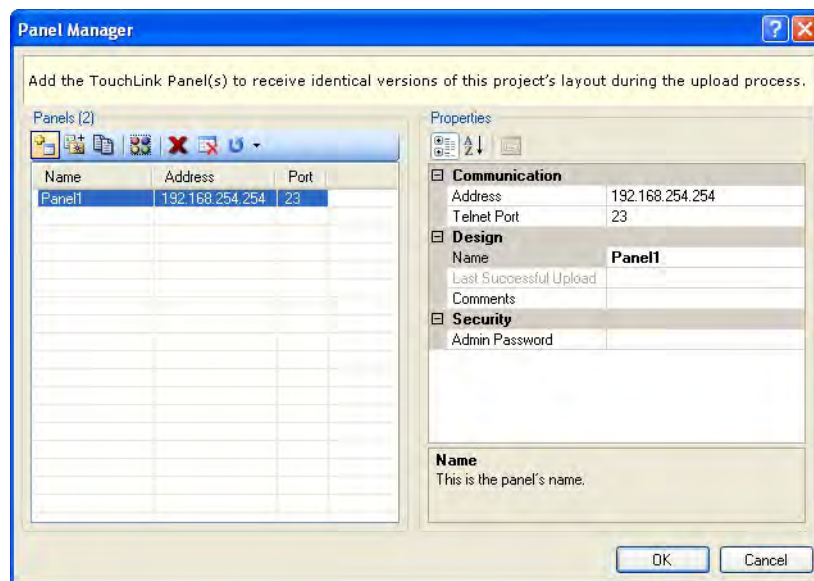



4. To save the project:
 - a. From the File menu, select **Save** Project. The project file is saved. If this is the first time saving the project file, the Save As dialog box appears.
 - b. If the Save As dialog box appears:
 - c. Browse for the location where the project file is to be saved.
 - d. Enter a file name for the project.
 - e. Click **Save**.
5. The project can be uploaded to one or more TouchLink panels. To add a panel, to which the project can be uploaded:
 - a. From the Project menu, select **Add > Panel**:



Configuration Software, cont'd

- b. The Panel Manager dialog box opens:



- c. Click on the **Add Panel** Icon to add a new panel to the list in the left pane. 
- d. Highlight the name of the panel in the left pane to display the panels properties in the right pane.
- e. When a new panel is added, it has the default IP address (192.168.254.254). To change the IP address, highlight the address property and type in the correct IP address. Update any other properties, as required.
- f. Repeat steps a - e to add further panels, if required.
6. To upload a project to a TouchLink Panel:
- From the Project menu, select **Upload All to Panels**. The Build Manager dialog box opens, showing the build progress. Once the build is complete, this dialog box closes and the File Upload Manager screen opens. The upload begins automatically.
 - Select **Close this dialog when upload completes** checkbox in the Automatic Settings section so that the File Upload Manager screen closes automatically once the upload completes. This option can be set before or during the upload.

If this project has been uploaded to the TouchLink Panel before, you can choose to upload the changes that have been made to the previous upload. You can also choose to upload to certain touch panels from the list of TouchLink Panels found within the Devices section of the File Upload Manager screen during the upload process.

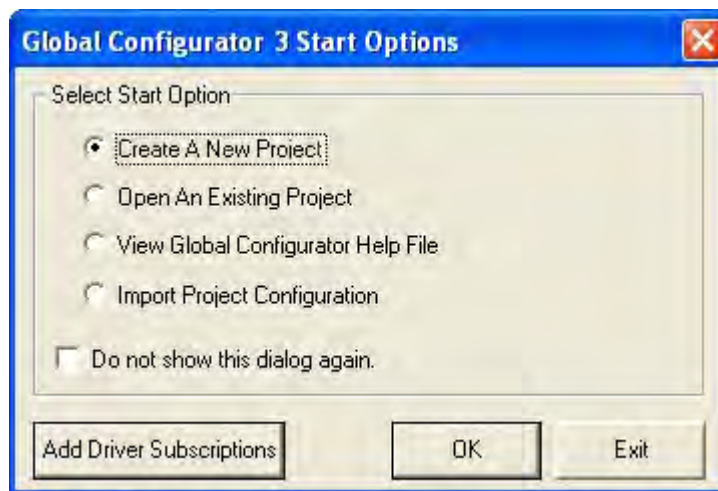
Using Global Configurator

NOTE You must use Global Configurator version 3.0 or later.

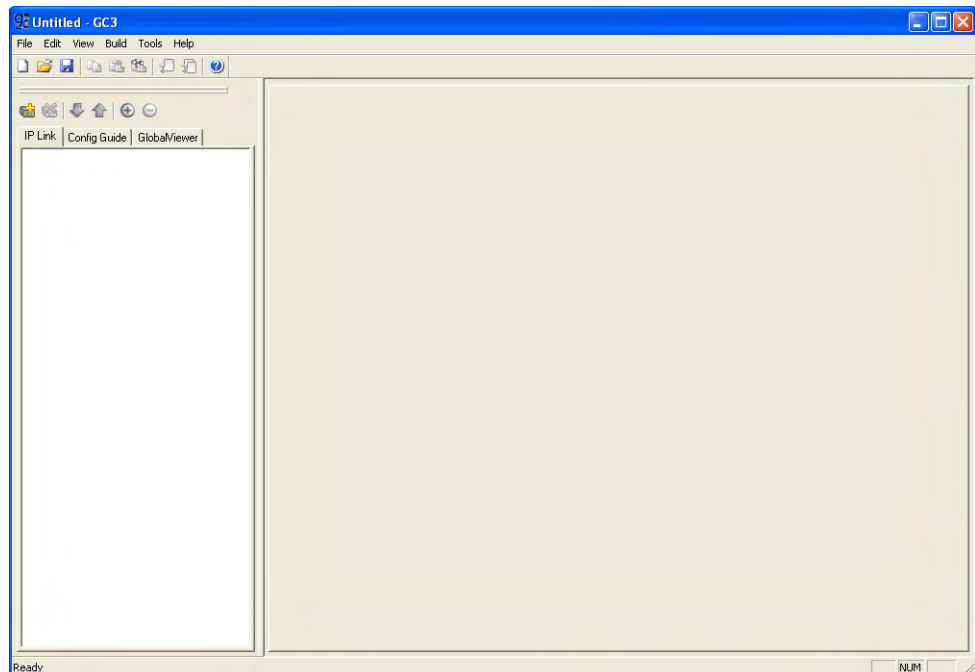
This section provides an overview of the Global Configurator program. For complete information about the program, consult the Global Configurator Help File (click on **Contents** in the Help Menu or press the F1 key while within the program).

These instructions describe how to set up Global Configurator project with an IPL 250. Setting up a project with another IP Link product will be similar but you should consult the Global configurator Help File for exact information about the product you are using.

1. Click on the GC3 desk top icon. The program opens at the main screen and a Start Options dialog box.



2. Select the **Create A New Project** radio button and click **OK**. The dialog box closes, leaving the start-up screen.

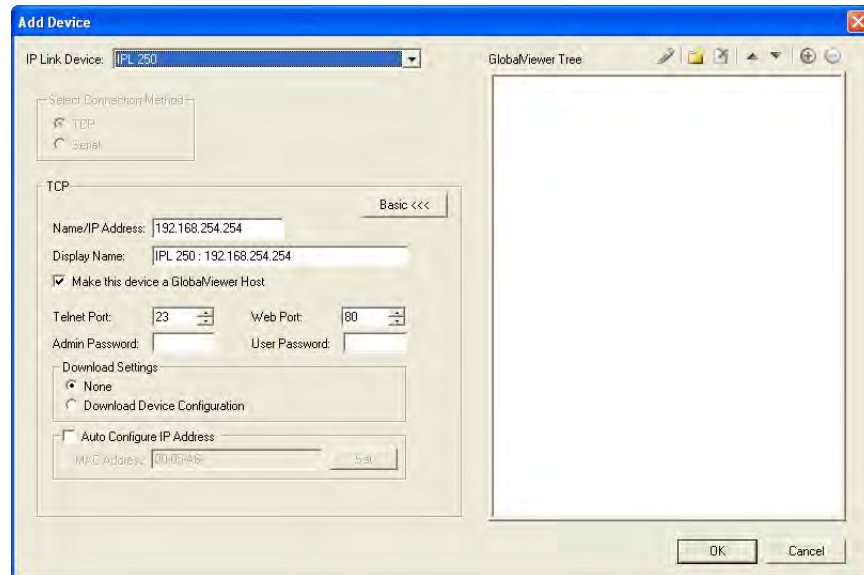


Configuration Software, cont'd

3. Add a new device. This can be done by clicking on the **Add Device icon** in the toolbar

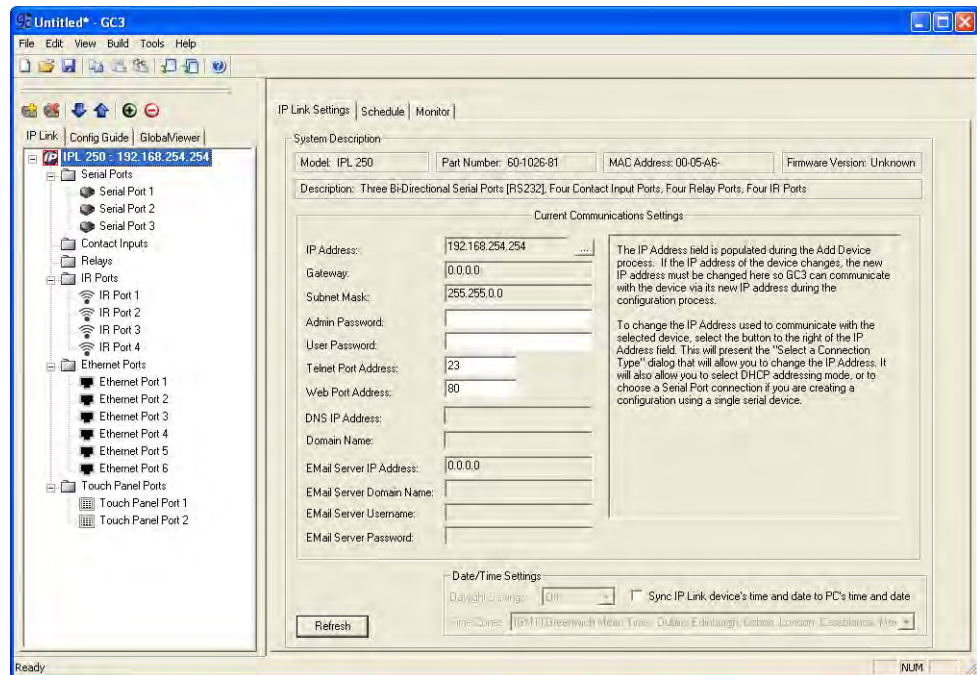
OR

Choosing **Add Device...** from the Edit Menu.

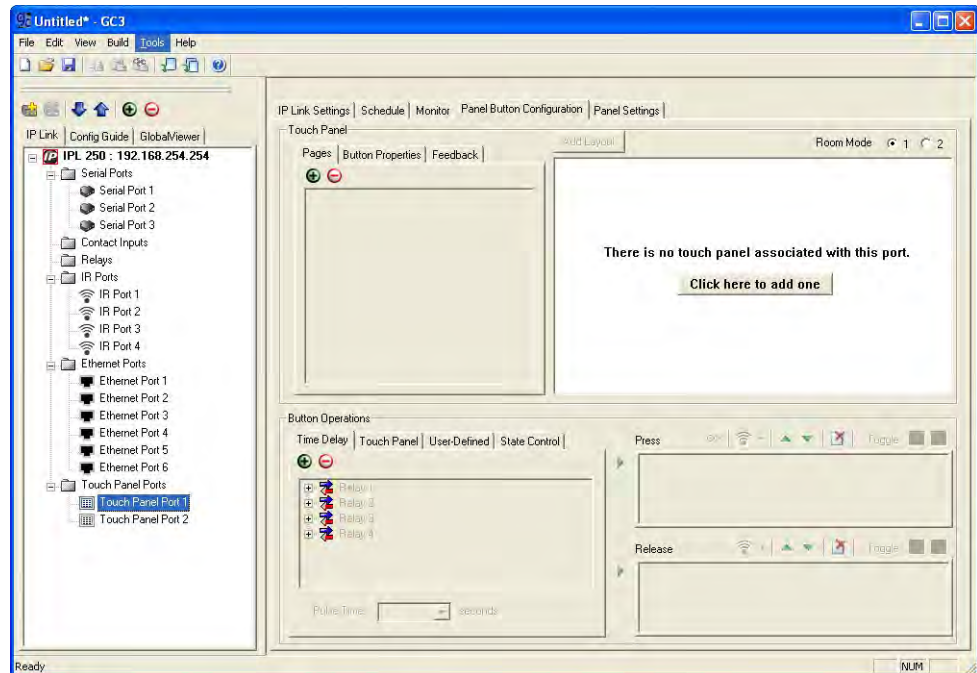


4. To see all the options, click on the **Advanced >>>** button. The button name will change to **Basic <<<** (as shown in the figure above).
 - a. Select the IP Link device from the drop-down menu. In this example an IPL 250 controller is added. Adding a different IP Link product will be similar.
 - b. Enter the IP address of the IP Link controller. The default value is 192.168.254.254, but this may have been changed. Check with your IT Department to verify the address. If the controller is password protected, enter the password now.
 - c. Enter a Display Name into the text box. This is what the device will be known as in the Global Configurator project.
 - d. Check the **Make this device a GlobalViewer Host** checkbox.
 - e. Set the telnet port (usually 23) and the web port (usually 80).
 - f. If necessary enter the password.
 - g. Click **OK**.

5. The program's main screen shows the IPL 250 and the available ports:



6. Click on **Touch Panel Port 1**. The screen changes to show options available for the TouchLink panel. To add the screen that was designed in GUI Configurator and uploaded to the TouchLink panel, click on **Click here to add one**.



Configuration Software, cont'd

7. The Add Touch Panel dialog box opens.
 - a. Ensure the correct model is selected from the drop-down menu.
 - b. Enter the IP address for the TouchLink Panel.
 - c. Set the Telnet Port (usually 23).
 - d. If necessary enter the password.
 - e. Check the **Import/Apply Layout** box.
 - f. Click **OK**.

Add Touch Panel

Model: TLP 700MV

TCP

Name/IP Address: 192.168.254.255 Basic <<<

Display Name: TLP 700MV : 192.168.254.255

Telnet Port: 23

Admin Password:

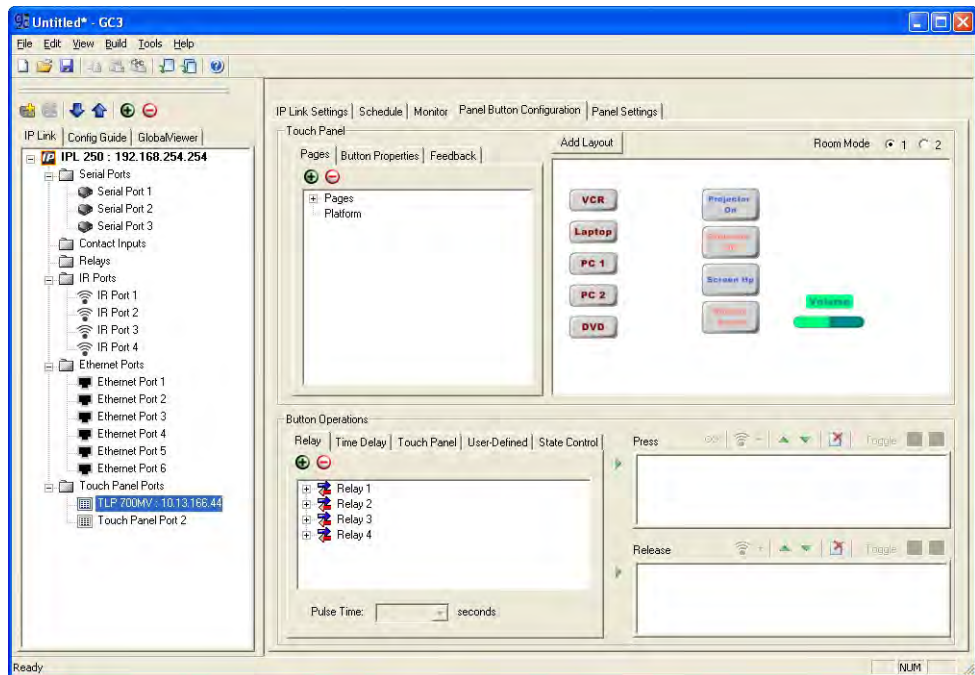
☐ Auto Configure IP Address

MAC Address: 00:05:46

☒ Import/Apply Layout

OK Cancel

8. The window now shows the GUI from the TouchLink panel.



9. For complete instructions on how to assign functions to the buttons on the screen, see the Global Configurator Help File, which is opened by clicking on **Contents** in the Help menu, or by pressing the F1 key while within the program.

Configuration Software, cont'd



TLP 700MV and TLP 700TV

Appendix A

Specifications, Part Numbers, Accessories

TLP 700MV Specifications

TLP 700TV Specifications

Part Numbers and Accessories

Specifications, Part Numbers, Accessories

TLP 700MV Specifications

Display

Screen type	Active matrix TFT color display
Size	7" (17.8 cm), measured diagonally
Resolution.....	800x480
Aspect ratio	Widescreen
Color depth	18 bit, 256k colors
Transparency.....	8 bit alpha channel
Brightness.....	400 nits (cd/m ²)
Contrast	300:1
Backlight.....	High bright LED
Viewing angle	±70° horizontal, +50°/-70° vertical
Touch screen.....	Resistive membrane

Memory

SDRAM.....	128 MB for graphics processing 8 MB for system use
Flash	32 MB for project storage 16 MB for system use

Control — Ethernet interface

Ethernet control/communications port	1 RJ-45 female connector
Ethernet data rate.....	10/100Base-T, half/full duplex with autodetect
Ethernet protocol.....	ICMP, IP, TCP (control), UDP, DHCP, Telnet
Default settings.....	Link speed and duplex level: autodetected IP address = 192.168.254.254 Subnet mask = 255.255.0.0 Default gateway = 0.0.0.0 DHCP = off
Program control.....	Extron Global Configurator 3.0 or higher GUI Configurator for Windows® Extron Simple Instruction Set (SIS™) Microsoft® Internet Explorer® ver. 6 or higher, Telnet

Control — touch panel

Motion sensor	On/off
Light sensor.....	On/off
External buttons	10 backlit, dual color (white, blue), field labelable

Video input

Number/signal type.....	1 S-video or composite video
Connectors	2 female BNC
Nominal levels.....	1 Vp-p for Y of S-video and for composite video 0.3 Vp-p for C of S-video
Impedance	75 ohms
Standards.....	NTSC, PAL

Audio output

Speaker output 1 mono, 86 dB SPL, 0.1 watt, 0.1 m, half space
 Frequency response 400 Hz to 15 kHz, ± 5 dB

Playback format(s) WAV files: 8 bit PCM, mono, 8 kHz sampling

General

External power supply 100 VAC to 240 VAC, 50-60 Hz, external; to 12 VDC, 1 A, regulated
 Power input requirements +12 VDC, 0.75 A
 Temperature/humidity Storage: -40 to +158 °F (-40 to +70 °C) / 10% to 90%, noncondensing
 Operating: +32 to +122 °F (0 to +50 °C) / 10% to 90%, noncondensing
 Cooling Convection, no vents

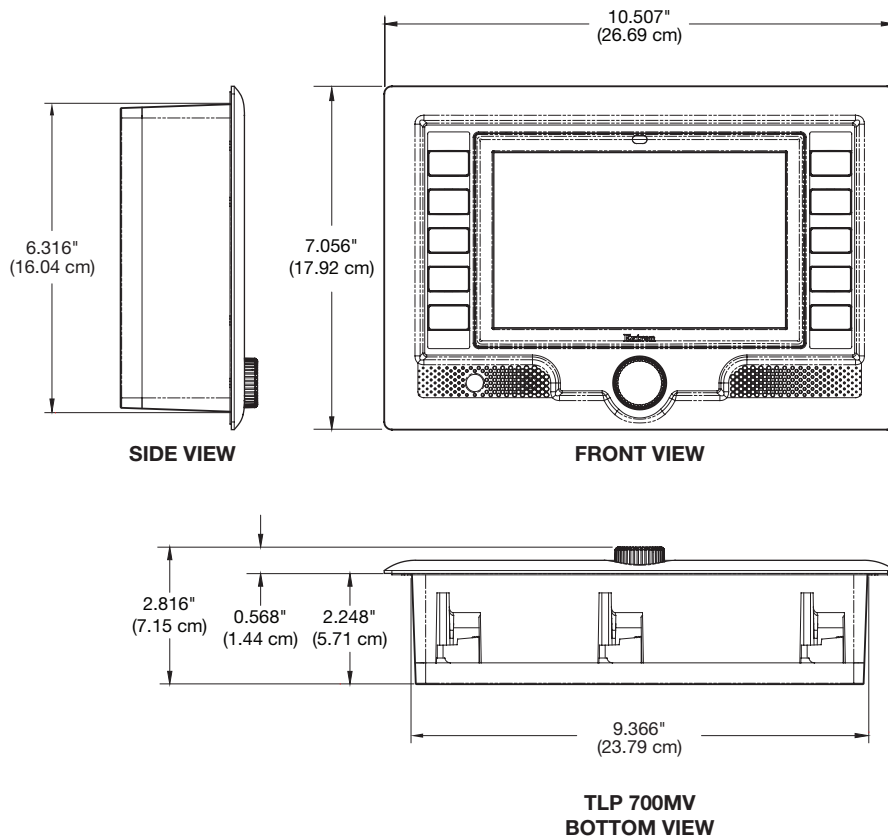
Mounting

Rack mount With optional kit
 Furniture or wall mount... With included hardware

Enclosure type Plastic

Enclosure dimensions

Faceplate 7.1" H x 10.5" W x 0.6" D
 (18.0 cm H x 26.8 cm W x 1.4 cm D)
 Enclosure Including knob, excluding mounting flange:
 6.3" H x 9.4" W x 2.8" D*
 (16.0 cm H x 23.8 cm W x 7.2 cm D*)
 *In-wall depth, excluding knob: 2.25" (5.7 cm)
 (Allow at least 2.75" [7.0 cm] depth in the wall/furniture.)



Specifications, Part Numbers, Accessories, cont'd

Product weight	3.8 lbs (1.7 kg)
Shipping weight	7 lbs (3 kg)
Vibration	ISTA 1A in carton (International Safe Transit Association)
Regulatory compliance	
Safety	CE, c-UL, UL
EMI/EMC	CE, C-tick, FCC Class A, ICES, VCCI
Environmental	Complies with the applicable requirements of RoHS and WEEE.
MTBF	30,000 hours
Warranty	3 years parts and labor

NOTE *All nominal levels are at $\pm 10\%$.*

NOTE *Specifications are subject to change without notice.*

TLP 700TV Specifications

Display

Screen type	Active matrix TFT color display
Size	7" (17.8 cm), measured diagonally
Resolution.....	800x480
Aspect ratio	Widescreen
Color depth	18 bit, 256k colors
Transparency.....	8 bit alpha channel
Brightness.....	400 nits (cd/m ²)
Contrast	300:1
Backlight.....	High bright LED
Viewing angle	±70° horizontal, +50°/-70° vertical
Touch screen.....	Resistive membrane

Memory

SDRAM.....	128 MB for graphics processing 8 MB for system use
Flash	32 MB for project storage 16 MB for system use

Control — Ethernet interface

Ethernet control/communications port	With base attached: 1 female RJ-45 connector Without base: 1 RJ-45 male connector on a pigtail
Ethernet data rate.....	10/100Base-T, half/full duplex with autodetect
Ethernet protocol.....	ICMP, IP, TCP (control), UDP, DHCP, Telnet
Default settings.....	Link speed and duplex level: autodetected IP address = 192.168.254.254 Subnet mask = 255.255.0.0 Default gateway = 0.0.0.0 DHCP = off
Program control.....	Extron Global Configurator 3.0 or higher GUI Configurator for Windows® Extron Simple Instruction Set (SIS™) Microsoft® Internet Explorer® ver. 6 or higher, Telnet

Control — touch screen

Motion sensor	On/off
Light sensor.....	On/off
External buttons	10 backlit, dual color (white, blue), field labelable

Video input — see S-video or composite video MTP transmitters' specifications

Number/signal type.....	1 S-video or composite video
Connectors	With base attached: 1 female RJ-45 connector Without base: 2 male BNC connectors on pigtails
Standards.....	NTSC, PAL

Audio input — see S-video or composite video MTP transmitters' specifications

NOTE *Audio input is available only from an Extron MTP transmitter through the RJ-45 connector in the unit's base. If the base is removed from the TLP 700TV, connections are via BNC connectors, and there is no audio input.*

Specifications, Part Numbers, Accessories, cont'd

Number/signal type.....	1 stereo, balanced/unbalanced, line level, as part of a set of proprietary signals from an Extron MTP
Connector	1 female RJ-45 (shared with video input)

Audio output

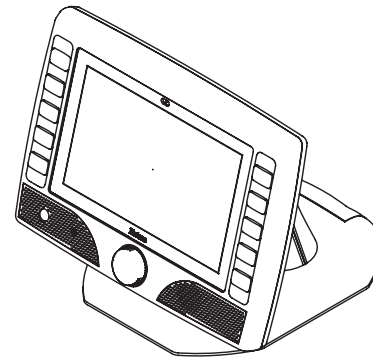
Speaker output	1 mono, 80 dB SPL, 0.1 watt, 0.1 m, half space
Frequency response	500 Hz to 16 kHz, ± 5 dB
Playback format(s)	WAV files: 8 bit PCM, mono, 8 kHz sampling

General

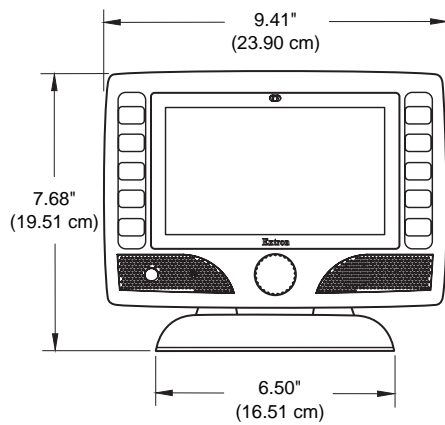
External power supply	100 VAC to 240 VAC, 50-60 Hz, external; to 12 VDC, 3 A, regulated
Power input requirements	+12 VDC, 0.75 A
Temperature/humidity	Storage: -40 to +158 °F (-40 to +70 °C) / 10% to 90%, noncondensing Operating: +32 to +122 °F (0 to +50 °C) / 10% to 90%, noncondensing
Cooling	Convection, vents on top rear
Mounting	
Furniture or wall mount...	Set on tabletop or mount to optional VESA D 75 mm panel mount kit
Adjustment ranges.....	Tilts through a 45° range
Enclosure type	Plastic
Enclosure dimensions.....	7.7" H x 9.4" W x 8.2" D (19.6 cm H x 23.9 cm W x 20.7 cm D) (Includes base. Total height and depth depends on screen tilt. See the diagrams on the following page.)
Product weight	2.3 lbs (1.0 kg)
Shipping weight	5 lbs (3 kg)
Vibration.....	ISTA 1A in carton (International Safe Transit Association)
Regulatory compliance	
Safety	CE, c-UL, UL
EMI/EMC	CE, C-tick, FCC Class A, ICES, VCCI
Environmental	Complies with the applicable requirements of RoHS and WEEE.
MTBF.....	30,000 hours
Warranty.....	3 years parts and labor

NOTE *All nominal levels are at $\pm 10\%$.*

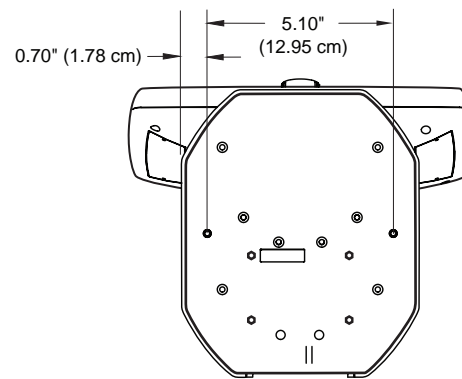
NOTE *Specifications are subject to change without notice.*



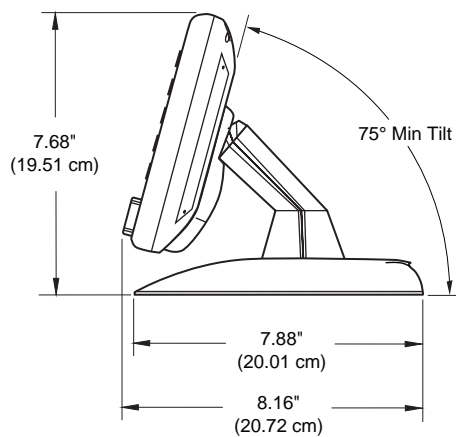
TLP 700 TV



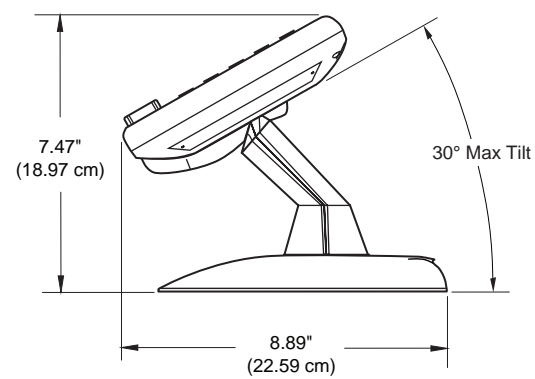
FRONT VIEW



BOTTOM VIEW



SIDE VIEW



Specifications, Part Numbers, Accessories, cont'd

Part Numbers and Accessories

Included parts

Description	Part number
TLP 700MV TouchLink Panel (wall mount)	60-546-02
TLP 700TV TouchLink Panel (desk top or VESA mount)	60-548-02
12 VDC, 1A power supply for TLP 700MV	70-775-01
12 VDC, 3A power supply for TLP 700TV	70-380-01
Buttonless Faceplate	
Extron Software Products DVD	
<i>Setup Guide for TLP 700MV or Setup Guide for TLP 700TV</i>	

Optional parts

Description	Part number
VM 700T VESA mounting plate (for TLP 700TV)	70-692-01
RM 700M rack mounting kit (for TLP 700MV)	70-683-01
TLP 700MV Button Labels (Sheet 1)	33-1792-01
TLP 700MV Button Labels (Sheet 2)	33-1792-02
TLP 700TV Button Labels (Sheet 1)	33-1793-01
TLP 700TV Button Labels (Sheet 2)	33-1793-02
IPL T S1	60-801-81
IPL T S2	60-544-81
IPL T S4	60-544-83
IPL T S6	60-544-84
IPL 250	60-1026-81
IPL T CR 48	60-544-05
IPL T SFI 244	60-544-06

NOTE To VESA mount the TLP 700TV, you must purchase a third-party VESA D 75 mm wall mount system.

Cables

Description	Part number
4-pin Mini DIN Female to 2 BNC Male Adapter - 1' (30 cm), 3' (90 cm), or 6' (1.8 m)	26-354-02, -03, -04



TLP 700MV and TLP 700TV

Appendix B

Mounting

Mounting the TLP 700MV

Mounting the TLP 700TV

Mounting

Mounting the TLP 700MV

Wall mounting

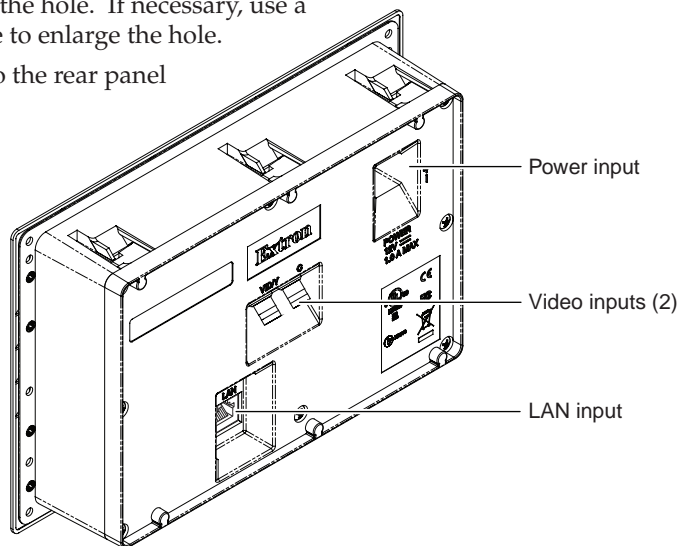
The TLP 700MV can be mounted in the wall, through furniture, or in a 5 U vertical space in a standard 19 inch equipment rack using the optional Extron RM 700M rack mounting kit (part #70-683-01). See the kit for full installation instructions.

Follow these instructions to mount the TLP 700MV in the wall. The steps will be similar if the unit is mounted in furniture (such as a podium or table):

1. Determine the best location for the TLP 700MV.

WARNING Make certain the correct cutout dimensions are being used before proceeding to the next step.

2. Use the template provided to mark the wall or furniture and cut a hole.
3. Run the network cable, two BNC video connectors, and power supply cables inside the wall to the hole, leaving enough slack in the cables to connect them to the back of the TLP 700MV. The TLP 700MV uses a 12 VDC, 1.0 A power supply (provided).
4. Unpack the TLP 700MV and remove the faceplate.
5. Ensure all the locking arms are flush with the unit and check that the TLP 700MV can fit into the hole. If necessary, use a rasp or a coarse file to enlarge the hole.
6. Plug the cables into the rear panel connectors.



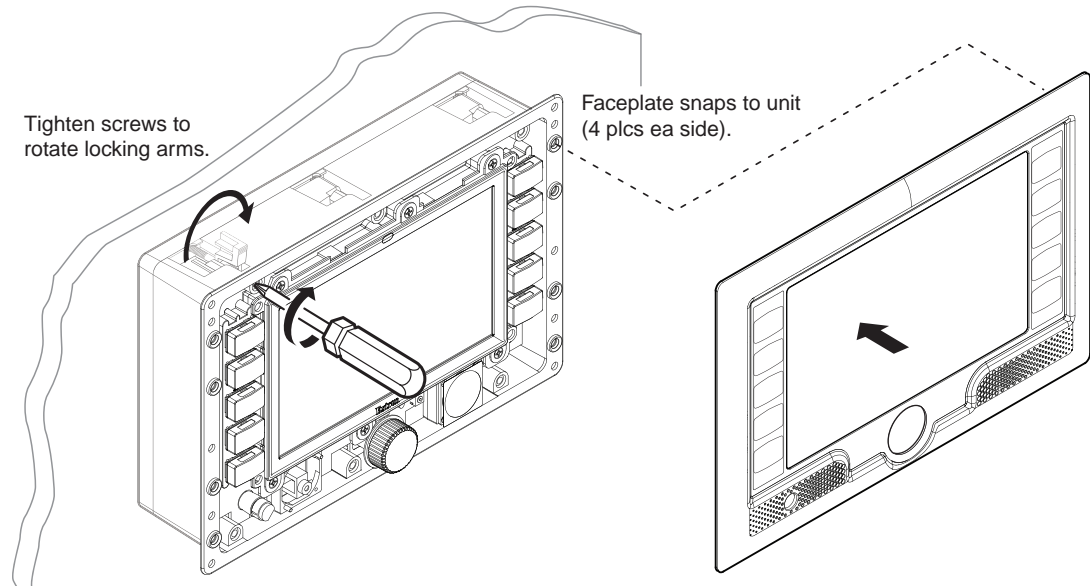
Connect the **LAN port** to the network with a straight-through cable.

Connect an **S-video or composite video source** to the unit, using these two BNC connectors:

- For S-video, connect the Y (luminance) signal to the VID/Y input and the C (chrominance) signal to the C input.
- For composite video, connect the input to the VID/Y input.

Connect the **power input** to a 12 VDC, 1.0 A power supply using the 2-pole captive screw connector.

7. Push excess cables into the wall cavity and fit the TLP 700MV into the hole.
8. Use a Phillips head screwdriver to tighten the screws. As the screws tighten, the locking arms rotate into position behind the wall and hold the unit in place. Do not overtighten the screws as this can damage the catches or the wall.



9. Do not replace the faceplate at this time as you will need access to recessed Menu and Reset buttons to configure the unit (see chapter 3, "Internal On-screen Menus").

Mounting, cont'd

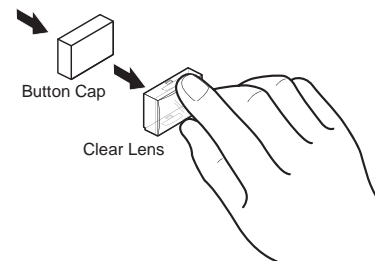
Buttonless faceplate

Extron provides a replacement faceplate (included with the unit) so that the TLP 700MV can be used exclusively as a touch panel screen, with no buttons. To install the buttonless faceplate, follow these instructions.

1. Gently remove the existing faceplate. You may need a screw driver as a lever to lift the faceplate away.
2. Remove the lens and button cap from all ten buttons.
3. Attach the replacement faceplate to the panel. Four catches on each side of the faceplate snap into the corresponding holes on either side of the panel.

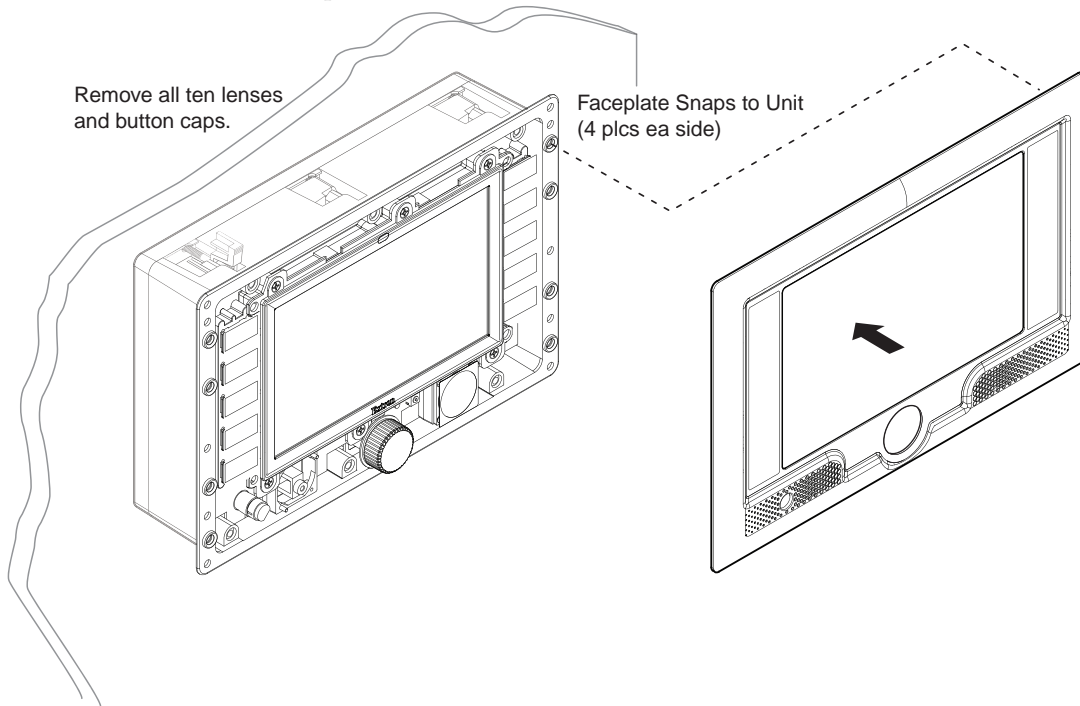


Remove all ten lenses and button caps.



Remove all ten lenses and button caps.

Faceplate Snaps to Unit
(4 plcs ea side)



Mounting the TLP 700TV

Desktop mounting

The TLP 700TV comes assembled with a stand that allows it to be placed on a desktop. If required, the stand can be removed and replaced with the Extron VM 700T kit (part #70-692-01). This kit fits into any third-party VESA Type D 75 mm wall mount system.

To mount the TLP 700TV on a desktop, place the unit in a suitable position and, if required, use two screws through the two holes in the base (19 in the figure on page 2-8) to secure the unit to the desktop.

1. Drill two holes through the desktop from underneath. The two holes must be 5.1 inches (13 cm) apart.
2. Use two wood screws through the desktop from underneath into the two holes in the base.

Insert the power supply, the network, and twisted pair video cables to the connectors on the back of the stand.

WARNING *The left RJ-45 connector on the back of the TLP 700MV (with the yellow and green LEDs) must be connect to a network. The right RJ-45 connector must be connected to an Extron MTP Transmitter. The MTP transmitter uses higher voltages than a LAN and inputting those voltages on the network connection will damage the TLP 700MV.*

Mounting, cont'd



TLP 700MV and TLP 700TV

Appendix C

Reset Modes

Reset Modes

Reset Modes

Reset Modes

The TLP 700MV and TLP 700TV have four reset modes that correspond to four of the five reset modes for the IP Link controllers. The modes are initiated by pressing the Reset button.

To access the Reset button on the TLP 700MV, remove the faceplate. See page 2-3 to locate the Reset button on the TLP 700MV. The Reset button on the TLP 700TV is recessed behind the faceplate, which cannot be removed. It is necessary to use a pen or paper clip to press it. See page 2-6 to locate the Reset button on the TLP 700TV.

TLP 700MV and TLP 700TV Reset Mode Summary				
	Mode	Activation	Result	Purpose/Notes
Use Factory Firmware	1	Hold down the recessed Reset button while applying power to the TLP 700. NOTE After a mode 1 reset is performed, update the TLP 700 firmware to the latest version. Do not operate the firmware version that results from this mode reset. If you want to use the factory default firmware, you must upload that version again. See page 4-3 for details on uploading firmware.	The TLP 700 reverts to the factory default firmware. Event scripting does not start if the TLP 700 is powered on in this mode. All user files and settings (drivers, adjustments, IP settings, etc.) are maintained. NOTE If you do not want to update firmware, or you performed a mode 1 reset by mistake, cycle power to the TLP 700 to return to the firmware version that was running prior to the mode 1 reset. Use the 0Q SIS command to confirm that the factory default firmware is no longer running (look for asterisks following the version number.)	This mode reverts to the factory default firmware version if incompatibility issues arise with user-loaded firmware. NOTE User-defined Web pages may not work correctly if using an earlier firmware version.
	3	Hold down the Reset button for about 3 sec. until the Power LED blinks once, then release and press Reset momentarily (<1 sec.) within 1 second.	This Mode turns events on or off. NOTE Nothing happens if the momentary press does not occur within 1 second.	This mode is useful for troubleshooting.
Reset all IP Settings	4	Hold down the Reset button for about 6 sec. until the Power LED blinks twice (once at 3 sec., again at 6 sec.). Then release and press Reset momentarily (for <1 sec.) within 1 second. NOTE Nothing happens if the momentary press does not occur within 1 second.	This Mode: <ul style="list-style-type: none">• Enables ARP capability.• Sets the IP address back to factory default (192.168.254.254).• Sets the subnet back to factory default.• Sets the default gateway address to the factory default.• Sets port mapping back to factory default.• Turns DHCP off.• Turns events off.	This mode enables you to set IP address information using ARP and the MAC address.
Reset to Factory Defaults	5	Hold down the Reset button for about 9 sec. until the Power LED blinks three times (once at 3 sec., again at 6 sec., again at 9 sec.). Then release and press Reset momentarily (for <1 sec.) within 1 second. NOTE Nothing happens if the momentary press does not occur within 1 second.	This Mode performs a complete reset to factory defaults (except the firmware). <ul style="list-style-type: none">• Does everything mode 4 does.• Removes button/touchpanel configurations.• Resets all IP options.• Removes scheduling settings.• Removes/clears all files from TLP 700.	This mode is useful if you want to start over with configuration and uploading, and also to replace events.



TLP 700MV and TLP 700TV

Appendix D

Button Labels

Button Label Software

Replacing Button Labels

Button Labels

Installing or Replacing Button Labels

Printed labels are included with the TLP 700MV and TLP 700TV. In addition, users can write on blank labels, purchase additional sheets of printed button labels from Extron (see page A-8) or print their own customized button labels with the Button Label Generator program. Replacement button caps are also available for purchase.

Button Label Generator software

The Button Label Generator software creates labels that you can place in the translucent covers above the buttons. You can create labels with names, alphanumeric characters, or color graphics for easy and intuitive input and output selection.

Installing the Button-Label Generator software

The Extron Button Label Generator is available on the Extron Web site, www.extron.com, under the Download tab. Click the **Software** link, and download and install the program by following the on screen instructions.

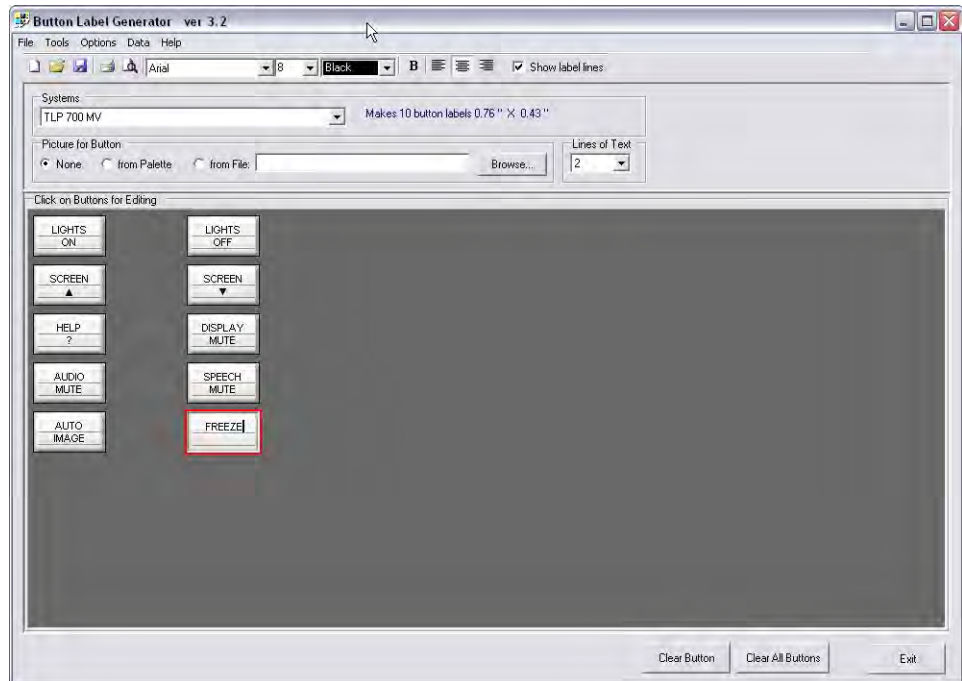


NOTE The Button Label Generator software is also included on the Extron Software Products disk that accompanies the TouchLink Panel.

By default, the Windows installation creates a C:\Program Files\Extron\ButtonLabelGenerator directory and places the Button Label Generator icon into a group or folder named "Extron Electronics". A shortcut icon can also be placed on the PC desktop.

Using the Button-Label Generator software

1. To run the Button-Label Generator program, click on the desktop icon. Alternatively, click **Start > Programs > Extron Electronics > Button Label Generator > Button Label Generator**. The Button-Label Generator window appears:



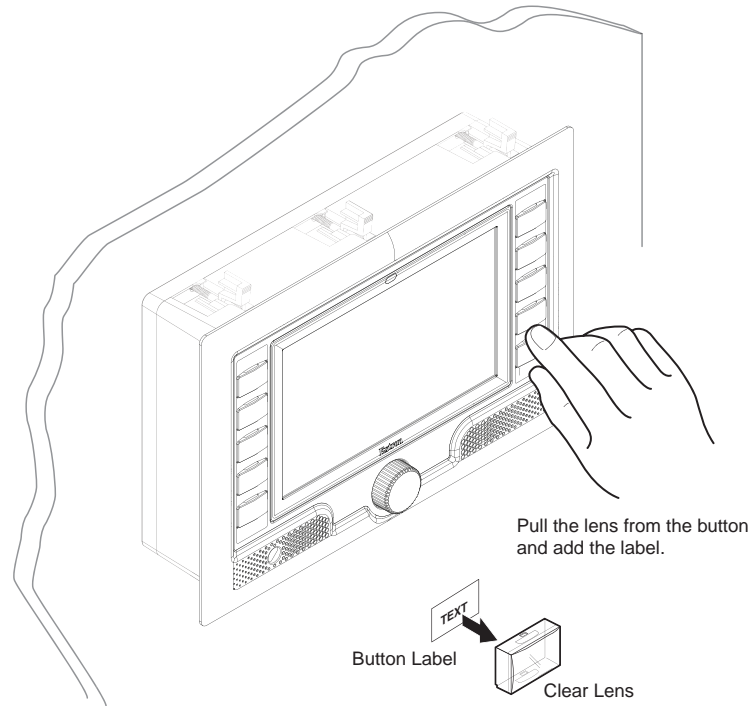
2. In the Systems selection box, choose the TLP 700MV or the TLP 700TV option to match the button label size and quantities for your TouchLink panel.
3. Using standard Windows controls, you can create and print labels that can be placed in the clear button caps on the front panel of the switcher.
4. Click the **Clear All Buttons** button and create new labels as many times as necessary to make all of the button labels that you need.

To access the help program, click the Help menu.

Button Labels, cont'd

Button labeling procedure

The illustration below shows how to replace the button labels on the TLP 700MV. Although, the buttons on the TLP 700TV are slightly smaller and the labels are different dimensions, the procedure for replacing labels on either model is the same. To change the translucent button labels for either model, follow these steps, as shown in the diagram:



1. Pull off the clear plastic lens covering the button using the thumb and forefinger.
2. If necessary, remove the existing label; it may be inside the lens or the top of the button plunger.
3. Place the new label inside the plastic lens. Ensure that the label and the lens are in the correct orientation.
4. Align the plastic lens with the button plunger and firmly snap it into place.
5. Repeat steps 1 to 5, as needed, to relabel all the buttons.

Extron Warranty

Extron Electronics warrants this product against defects in materials and workmanship for a period of 3 years parts and labor; touchscreen display and overlay components are covered for 1 year. In the event of malfunction during the warranty period attributable directly to faulty workmanship and/or materials, Extron Electronics will, at its option, repair or replace said products or components, to whatever extent it shall deem necessary to restore said product to proper operating condition, provided that it is returned within the warranty period, with proof of purchase and description of malfunction to:

**USA, Canada, South America,
and Central America:**

Extron Electronics
1001 East Ball Road
Anaheim, CA 92805
U.S.A.

Japan: Extron Electronics, Japan
Kyodo Building, 16 Ichibancho
Chiyoda-ku, Tokyo 102-0082
Japan

Europe, Africa, and the Middle East:

Extron Europe
Hanzeboulevard 10
3825 PH Amersfoort
The Netherlands

China:

Extron China
686 Ronghua Road
Songjiang District
Shanghai 201611
China

Asia:

Extron Asia
135 Joo Seng Road, #04-01
PM Industrial Bldg.
Singapore 368363
Singapore

Middle East:

Extron Middle East
Dubai Airport Free Zone
F12, PO Box 293666
United Arab Emirates, Dubai

This Limited Warranty does not apply if the fault has been caused by misuse, improper handling care, electrical or mechanical abuse, abnormal operating conditions or non-Extron authorized modification to the product.

If it has been determined that the product is defective, please call Extron and ask for an Applications Engineer at (714) 491-1500 (USA), 31.33.453.4040 (Europe), 65.383.4400 (Asia), or 81.3.3511.7655 (Japan) to receive an RA# (Return Authorization number). This will begin the repair process as quickly as possible.

Units must be returned insured, with shipping charges prepaid. If not insured, you assume the risk of loss or damage during shipment. Returned units must include the serial number and a description of the problem, as well as the name of the person to contact in case there are any questions.

Extron Electronics makes no further warranties either expressed or implied with respect to the product and its quality, performance, merchantability, or fitness for any particular use. In no event will Extron Electronics be liable for direct, indirect, or consequential damages resulting from any defect in this product even if Extron Electronics has been advised of such damage.

Please note that laws vary from state to state and country to country, and that some provisions of this warranty may not apply to you.

Quick Installation Checklist

Installation of the TLP 700MV and TLP 700TV can be divided into five main sections:

Step 1 — Mount the TouchLink panel (select one option):

- ☐ Mount the TLP 700MV in a wall (pages B-2 and B-3).
- ☐ Mount the TLP 700TV on a desk-top (page B-5).

Step 2 — Connect the power, network, and video cables, (select one option):

- ☐ Cable the TLP 700MV (pages 2-4 and 2-5).
- ☐ Cable the desk-top mounted TLP 700TV (page 2-7).

Step 3 — Initial configuration with internal on-screen menus

- ☐ Configure the TouchLink panel, using the on-screen menus (page 3-2)
- ☐ Carry out Touch Screen calibration (page 3-5).

Step 4 — Install and update software

- ☐ Connect a PC to same network as the TouchLink panel (for PC requirements, see page 1-4)
- ☐ Connect an IP Link controller to the same network (for a list of suggested models, see page 1-4).
- ☐ Install GUI Configurator and Global Configurator on the PC (pages 4-2).

Step 5 — Design and configure graphical user interface

- ☐ Use GUI Configurator to design a new graphical user interface project for the TouchLink panel (see page 4-7 to 4-10 and the GUI Configurator help file).
- ☐ Save and upload the project to the TouchLink panel (see page 4-9).
- ☐ Create a new Global Configurator project for the IP Link controller (see pages 4-11 to 4-12 and Global Configurator help file).
- ☐ In Global Configurator, import and configure the GUI Configurator project. (see pages 4-12 to 4-15 and Global Configurator help file).

Extron **USA - West**
Headquarters
+800.633.9876
Inside USA / Canada Only
+1.714.491.1500
+1.714.491.1517 FAX

Extron **USA - East**
+800.633.9876
Inside USA / Canada Only
+1.919.863.1794
+1.919.863.1797 FAX

Extron **Europe**
+800.3987.6673
Inside Europe Only
+31.33.453.4040
+31.33.453.4050 FAX

Extron **Asia**
+800.7339.8766
Inside Asia Only
+65.6383.4400
+65.6383.4664 FAX

Extron **Japan**
+81.3.3511.7655
+81.3.3511.7656 FAX

Extron **China**
+400.883.1568
Inside China Only
+86.21.3760.1568
+86.21.3760.1566 FAX

Extron **Middle East**
+971.4.2991800
+971.4.2991880 FAX