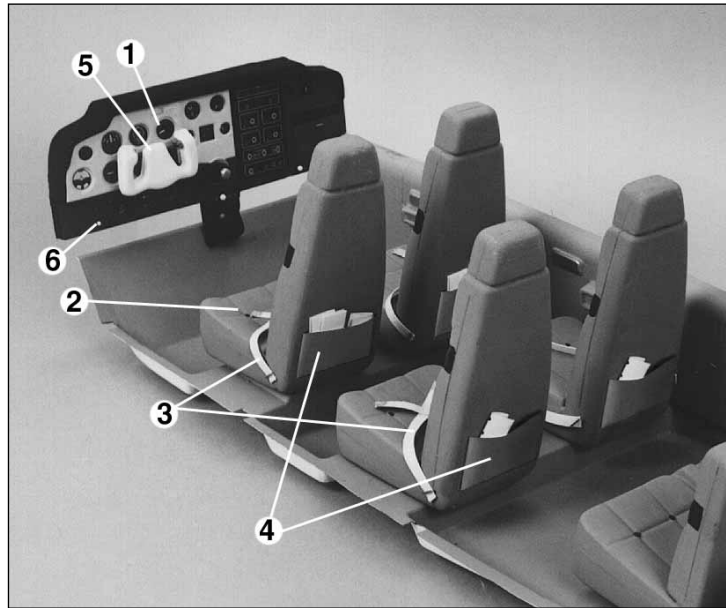


DETAILING HINTS:



The numbers on this photo apply to the following steps.

❑ 1. Carefully cut the radios and instruments from the instrument panel decal included in your Top Flite Bonanza Cabin kit and attach them to the **front** of the instrument panel.

❑ 2. Seat and door beading can be made from embroidery “floss” or string. Tack glue a short piece at one end with thin CA, then stretch it to the end of its run. Hold it with tweezers while you CA the floss or string in place.

❑ 3. Seatbelts are cut from 1/4" dressmakers' elastic (included in this kit). One end is threaded through the eye of a large T-pin and spot glued to itself. The pin is inserted through the floor, bent 90 degrees and glued to the underside of the floor. The buckles are cut from chrome tape or could be made from aluminum foil.

❑ 4. Maps and magazines are made from small pieces cut from the real thing.

❑ 5. The cavity on the back of the control yoke is filled with automotive body filler or epoxy and microballoons. Before the filler sets, insert the yoke arm in the center of the yoke. Be sure it is at the correct angle as shown in the photo. Tape it securely in position until the filler cures.

❑ 6. All knobs and buttons are made from large and small quilters pins (included in this kit). Insert them through the instrument panel, then bend them 90 degrees on the back side. Cut off the excess wire close to where the pins are bent, then glue them in position on the back side.

*Many more details can be added. It's up to you. A little imagination and craftsmanship is all it takes. Have fun with this project. The results will be well worth the effort.*

FINAL INSTALLATION:

❑ 1. Glue the cabin floor into position. We suggest using clear silicone sealer as the adhesive because it provides a good bond between wood and plastic.

❑ 2. Glue the sides into position with Thin CA being used between the plastic parts and silicone sealer between the wood formers and the plastic.

❑ 3. Glue the seats to the floor with CA **after** scraping off any paint from points of contact.

❑ 4. The instrument panel and glare shield are glued to the cabin top. Carefully check their fit and position with the other cabin parts before gluing into position.

❑ 5. The seams of the windows on the cabin top can be dressed up with 1/8" foam strips. If cut carefully, it looks very realistic. The foam can also be covered with thin vinyl material.

**When you take your Bonanza to the field, be ready for the praise you will undoubtedly receive. It is a beautiful aircraft. Happy flying!**

TOP FLITE GOLD EDITION BEECHCRAFT BONANZA LIGHTING KIT



Custom-wired for the Beechcraft Bonanza, this complete lighting set includes three position lights, one landing light and a variable-speed rotating beacon. Wiring has been measured to the correct lengths for all light locations and is already soldered. A micro switch activates the landing light when retract gear is extended. Also includes a master on/off switch and battery box for the required 6 “AA” or NiCd batteries. – TOPQ7912



SCALE INTERIOR KIT FOR THE GOLD EDITION BEECHCRAFT BONANZA



**WARRANTY.....** Top Flite Models guarantees this kit to be free from defects in both material and workmanship at the date of purchase. This warranty does not cover any component parts damaged by use or modification. In no case shall Top Flite's liability exceed the original cost of the purchased kit. Further, Top Flite reserves the right to change or modify this warranty without notice. In that Top Flite has no control over the final assembly or material used for final assembly, no liability shall be assumed nor accepted for any damage resulting from the use by the user of the final user-assembled product. By the act of using the user-assembled product, the user accepts all resulting liability.

If the buyers are not prepared to accept the liability associated with the use of this product, they are advised to return this kit immediately in new and unused condition to the place of purchase.



**Top Flite Models**  
P.O. Box 788  
Urbana, IL 61803  
Technical Assistance - Call (217) 398-8970

**READ THROUGH THESE INSTRUCTIONS FIRST. THEY CONTAIN IMPORTANT INSTRUCTIONS CONCERNING THE ASSEMBLY OF THIS MODEL.**

Congratulations for deciding to install a fully detailed, scale looking interior in your Top Flite Beechcraft Bonanza. This is a project that can be as detailed or as straightforward as you care to make it – the choice is yours. We have provided the basic kit that can be assembled and painted in a few hours. It represents a stock Bonanza interior as delivered from the factory. The color scheme and minor surface details change from plane to plane, so you may need to add extra goodies like head rests or shoulder harnesses depending on the full-scale plane you modeled. By using this kit, some imagination and your modeling experience, you can create a great looking interior that will “wow” them at the flying field.

TOOLS AND SUPPLIES

- ❑ 1 oz. Thin CA (GPMR6002)
- ❑ Hobby knife and #11 blades
- ❑ Lexan® scissors (KYOR1010)
- ❑ Round file
- ❑ 150, 220, 340 and 400-grit wet or dry sandpaper
- ❑ Bar Sander (GPMR6170)
- ❑ Selection of small paint brushes

- ❑ White primer paint (Must be compatible with styrene plastic)
- ❑ Model enamel paint (Testors)
- ❑ Plastic model putty (Testors), or automotive body filler (Bondo®)
- ❑ Needle nose pliers
- ❑ Tweezers
- ❑ Silicone sealer adhesive

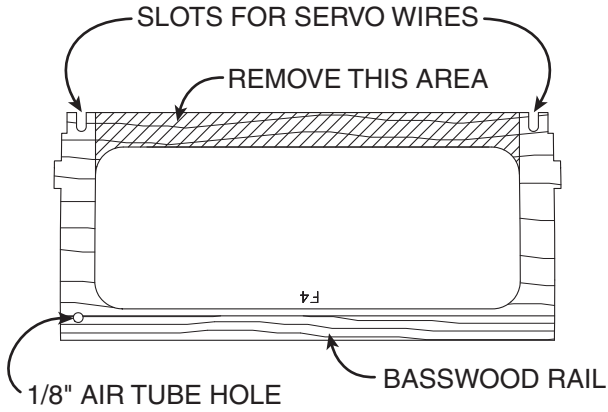
SCRAPS FROM AROUND YOUR WORKSHOP

- ❑ Elastic thread and cloth scraps – for seat pockets
- ❑ Chrome trim tape – for seatbelt buckles
- ❑ Large T-pins – for seatbelt attachment

**GETTING STARTED:**  
Assembling and installing your scale cabin interior will probably require minor adjustments and “tweaking” to fit your particular model. This is because of variations in building technique, parts alignment and glue fillets that may interfere with proper positioning of the parts. A little patience is all that is required to obtain a good looking installation. Trim parts a little at a time, checking the fit after each adjustment. Remember, you can always remove material, but it’s hard to put it back.

❑ 1. Start by trimming **all parts** to the embossed “trim lines.” **Be sure to leave a 3/8" lip around the fuselage side panels to provide a gluing surface for the floor.** Use a hobby knife or scissors to “rough cut” the parts. Then, sand the parts with a sanding block to straighten the edges. You can evenly sand the edges by simply taping a sheet of 220-grit sandpaper to your workbench. Then, work the part in a circular motion while pressing down gently.

**NOTE:** Save all scraps of smooth plastic in case you need them later.



❑ 2. Before fitting any of the parts in the fuselage cavity, you will first need to modify some of the formers. You will need to cut and remove the top portion of formers F3, F4, F5 and F6 that extend across the width of the fuselage as shown in the sketch above. If you have not already done so, you should also drill any holes for the retract air tubes as well as cut notches for the servo wires.

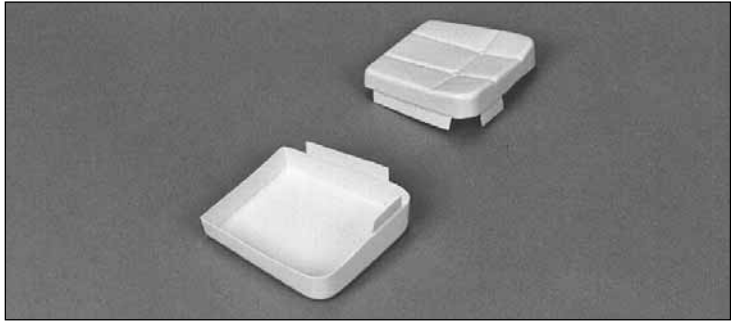
❑ 3. Refer to the exploded drawing to see how the parts fit together. On the floor and side panels you will note several notches that must be cut out to allow the floor to fit around the fuselage formers. Without using any glue (and in the following order), fit the floor, sides and aft bulkhead into the fuselage cavity. Make any adjustments needed for a good fit.

❑ 4. Place the cabin top on the fuselage and mark the crutch where the instrument panel will be positioned. It is important to accurately mark the position so that the instrument panel will mate properly with the side panel when the cabin top is installed. The exploded view shows the area that the instrument will slide into.

**NOTE:** If you have not already done so, we recommend that you glue some reinforcing basswood sticks across the bottom of formers F4 and F6. There was extra 1/4" x 3/8" x 36" material included in the Bonanza kit for this purpose. You must also decide how you will attach the forward portion of the floor (the part that covers the servo area.) We recommend some balsa stick scraps be used for this purpose. This area can be easily accessed from the wing opening.

❑ 5. When you are satisfied with the fit of the primary cabin parts, remove them from the model and set them aside until it’s time to paint.

**ASSEMBLE THE SEATS:**

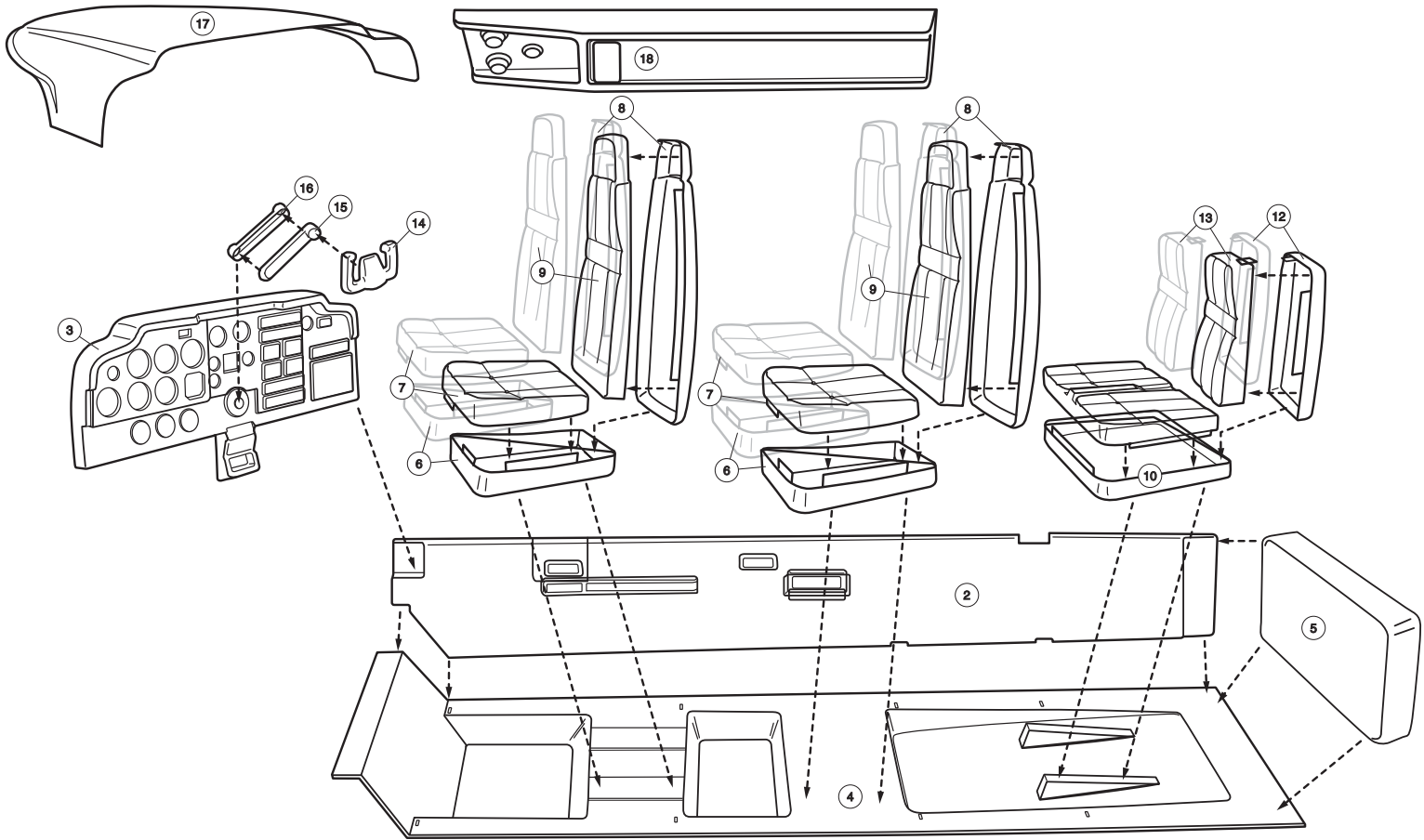


❑ 1. Check the glue tabs on all of the seat fronts and backs to insure that they align and fit properly. Trim and adjust them as needed. Do the same for the seat tops and bottoms.

**DETAILING PARTS LIST**

– NOT SHOWN –

- 1 yd.....Dressmakers’ elastic – seat belts
- 6 ea.....Small head pins – dash knobs/buttons
- 3 ea.....Large head pins – throttle/mixture knobs
- 1 ea.....Instrument panel decal



**PLASTIC PARTS LIST**

- |                 |  |                 |                             |
|-----------------|--|-----------------|-----------------------------|
| 1.....1 .....   | Side panel – left (not shown)          | 0.....1 ea..... | Lower rear seat             |
| 2.....1 .....   | Side panel – right                     | -.....1 ea..... | Rear seat cushions          |
| 3.....1 .....   | Instrument panel                       | =.....1 ea..... | Rear seat back – rear half  |
| 4.....1 .....   | Floor                                  | q.....1 ea..... | Rear seat back – front half |
| 5.....1 .....   | Aft bulkhead                           | w.....2 ea..... | Control yoke                |
| 6.....4 ea..... | Lower front and middle seats           | e.....1 ea..... | Yoke arm – front half       |
| 7.....4 ea..... | Front and middle seat cushions         | r.....1 ea..... | Yoke arm – rear half        |
| 8.....4 ea..... | Front and middle seat back – rear half | t.....1 ea..... | Glare shield                |
| 9.....4 ea..... | Front and seat back – front half       | y.....1 ea..... | Roof console                |



❑ 2. Starting with a front seat, insert the seat back onto the seat bottom. Hold the parts in position with a piece of masking tape. The seat back should angle toward the rear of the cabin by a few degrees. Glue the seat back in position by “wicking” a few drops of thin CA into the joint along the bottom and sides. Remove the tape after the CA has cured.

❑ 3. Tape the seat cushion to the bottom half of the seat at a couple of places. When properly aligned, use thin CA to glue the parts together. Remove the tape after the CA cures. Use the same technique to add the seat back cushion.

❑ 4. Assemble the remaining front seat, the two center seats and the rear bench seat the same way.

❑ 5. Use plastic model seam putty or automotive body filler to cover all of the joints. When the filler has cured, wet sand it smooth with 220 or 340-grit sandpaper.

❑ 6. Seat back pockets can be made from elastic thread and thin cloth glued into position.

**PAINTING AND DETAILING**

❑ 1. Before painting, **thoroughly clean** the parts with rubbing alcohol, then allow them to dry completely.

❑ 2. Spray all parts with white enamel primer. Be sure to use a primer that is compatible with styrene plastic (Top Flite® LustreKote™ is **NOT** recommended). Lightly **wet sand** the parts with sandpaper and allow them to dry. Repeat the priming and sanding process if needed.

❑ 3. Paint all of the parts with **model enamel**. Apply the lightest color of paint first. Use a 1/2" wide camel hair brush (or an artist’s air brush) to obtain the smoothest finish. The bases on the floor (that the seats are mounted to) should be painted flat black.

❑ 4. Due to the curvature of the floor pans, scale looking carpeting is very difficult to simulate. It is best done with a rough texture paint.