

Panasonic®

使用说明书
Operating Instructions
直发器
Straightener

型号
Model No. EH-HS50

中文	2
English	6

在使用前，请仔细阅读此说明书并妥善保管，以备将来参考。
Before operating this unit, please read these instructions completely and save this manual for future use.

安全说明

使用本直发器前请先阅读此安全说明。此处介绍的安全说明可以帮助您安全正确地使用本直发器，还可以防止您自己或别人受伤。

请务必遵守这些重要安全说明！否则可能会造成火灾、烫伤、短路或触电事故。

阅读这些安全说明后，请确保将其置于使用者容易看到的地方，以备随时参考。



警告：不要在盛水的浴缸、淋浴、洗脸盆或其它器皿附近使用本直发器。

禁止在洗澡和淋浴时使用。

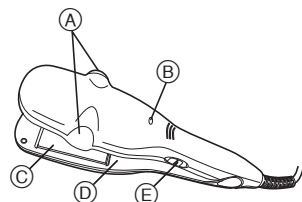
1. 使用后，请务必将“I/O 滑动开关”设置在“0”并将电源插头从电源插座中拔出。
2. 请确保所使用的电压与本直发器标明的额定电压符合。
3. 如果电源线或电源插头损坏或发热；或者电源插头插入电源插座不紧时，请立即停止使用。
4. 请避免切割、损坏或修改电源线。避免过度用力拉扯、扭曲或弯折电源线。如果电源线损坏或发热，请立即停止使用，并联系 Panasonic 授权维修店。
5. 只有专职人员可以维修或者拆卸直发器。
6. 请勿将金属物件（如发夹）插入负离子发射口。

7. 本品不宜供肢体、感官或精神上有残疾者、缺乏经验和知识者（包括儿童）使用，除非有人对此类人加以监督或者对本品的使用加以指导，且对使用者的安全能承担责任。
8. 请勿将本直发器存放在靠近浴缸、脸盆或其他容器及湿度大的地方。
9. 请使电源线远离热源的表面。将电源线缠绕在本直发器上可能引发火灾或触电事故。
10. 如果直发器电源线或电源插头损坏，或者工作不正常，或者已经破损，或者掉入水中，切勿操作直发器。请将直发器送到 Panasonic 授权维修店检查或维修。
11. 直发器必须安装固定在洗澡或淋浴时触及不到的地方并且直发器的安装固定须保证手持部分在完全拉直时，洗澡和淋浴仍无法触及。
12. 在浴室内使用时，使用后请拔下插头，因为即使直发器断电后，接近水仍存在危险，为了保障您的安全，建议在浴室供电的电气回路中安装一个额定漏电动作电流不超过 30mA 的漏电保护装置（RCD）。向 RCD 安装商咨询。
13. 请勿将直发器弄湿。
14. 请在双手干燥时使用本直发器。
15. 本直发器在使用过程中加热板会很热。请勿使眼睛或皮肤接触热源的表面。
16. 本直发器很热或电源接通时，请勿将其直接置放于任何物体的表面上。
17. 当使用直发器夹住头发时，请勿在夹板关闭的情况下，使直发器接近面部。
18. 电源接通后，请勿使本直发器处于无人监管状态。
19. 请勿在婴儿身上使用本直发器，或将其用于头发以外的任何物品。

20. 请勿使直发器掉落或受到撞击。如果直发器损坏,请勿使用。
 21. 请勿往直发器上直接喷雾。
 22. 请勿强行打开夹板。
 23. 除非夹板和加热板已经冷却,否则请勿将直发器放置或存放在塑料或其他可能溶化的材料中或附近。
 24. 当拔出电源插头时,请捏住电源插头。
 25. 本直发器只供家庭使用。
 26. 本直发器只能用于其设计用途。
 27. 如果电源软线损坏,为避免危险,必须由制造厂或其维修部或类似的专职人员来更换。
 28. 如果电源线或电源插头损坏,请立即停止使用,并联系 Panasonic 授权服务中心。
 29. 不用时,请将本直发器电源断开,将其存放在干燥、安全、儿童够不到的地方。请勿猛拉或猛拽插头连接处的电源线。请勿将电源线缠绕在本直发器上。请使电源线保持自然下垂状态。
 30. 使用本直发器时,请谨慎操作。电源打开后,加热板将变得很热,请避免其接触皮肤。
 31. 本直发器不需要保养。如果需要清洁,请将直发器与电源断开连接,待加热板冷却后,用湿布擦拭直发器表面。
- 如果发生异常情况,请拔下直发器,待其冷却后拿到 Panasonic 授权服务中心维修。切勿尝试自己维修。

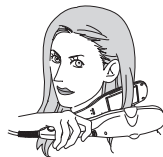
部件名称

- ① 负离子发射口 (双侧)
- ② LED 指示灯
- ③ 加热板
- ④ 夹板
- ⑤ I/O 滑动开关



直发器的使用方法

1. 打开直发器开关。
 - LED 指示灯亮起。
2. 等待约 3 分钟直至加热板变热。
3. 用加热板夹住一束头发。
 - 请确保头发在加热板之间的中心位置。
4. 缓缓地向发梢的方向拉直发器,把头发拉直,然后慢慢松开夹板。
 - 压力过大可能损伤头发。
5. 重复这一过程,如果在拉直头发的时候施加足够的压力,可以获得与发型相配的理想效果。
6. 使用后,关闭电源,将直发器电源插头从电源插座中拔出。

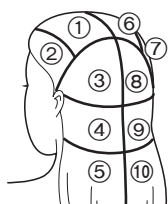


实现美丽直发的头发分区

按照插图所示顺序，用束带或发夹将您的头发固定，便可拉直成美丽的直发。

虽然这看似费时，却是巧妙变直发的最快方法。

• 在干发上实施分区。



捆扎头发的方法

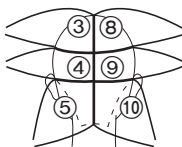
1 将头发平均分为左右两边。

2 进一步细分头发区域。



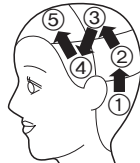
3 从顶部到底部将您头部后半边的头发分成 6 个区域。

• 将每一束头发都卷起来，然后用发夹固定。



梳理顺序

按照 ①-⑤ 的顺序，从您头部后半边的底部开始梳理。



什么是负离子？

负离子是一些带负电荷的氧和空气中水分子相结合的粒子，用肉眼是看不见的，因为其直径只有蒸汽粒子的 1/1000。像电晕放电一样，它们是通过高压放电的方法产生的。下述人不容易出现负离子的效果。

- 天然卷发的人
- 头发容易卷曲的人
- 发质本身很好，不易凌乱的人
- 负离子烫发未超过 3-4 个月的人
- 留短发的人

负离子释放时会有异味发生，这种异味对身体健康是没有任何危害的。

清洁直发器

- 夹板和加热板冷却且电源插头已从插座中拔出后，可以清洁直发器。
- 请使用已经浸有肥皂水并已彻底拧干的布。请勿使用挥发油、稀释剂或酒精。

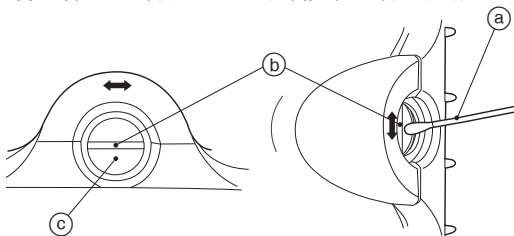
否则可能导致直发器表面出现裂痕或褪色。

为了确保直发器不丧失释放负离子的功能，请按下文描述的方法定期（约每 6 个月 1 次）清洁两个负离子发射口（左右两侧）。

●负离子发射口的清洁方法

只有在关闭电源并且电源插头从电源插座上拔下之后，才可以清洁直发器。

使用棉签（a）轻轻地擦拭（约 5 次）负离子发射口（c）内部的部件中央（b）。建议使用婴儿专用的细软棉签。虽然普通棉签也可用，但它们可能难以插入发射口。



型号规格

产品名称	直发器
产品型号	EH-HS50
额定电压	a. c 220 V ~ 50 Hz
额定功率	25 W
尺寸	52（宽）× 97（深）× 271（高）mm
原产地	中国
生产日期	请见商品上刻印
执行标准	GB4706.1, GB4706.15, GB4343.1 GB17625.1, Q/SXDGWB 8

规格如有变更，恕不另行通知。

中文

Safety Instructions

Please read the safety instructions before using this appliance. The safety instructions explained here help you to use this appliance safely and correctly, and also to prevent you from injuring yourself or others.

ALWAYS FOLLOW THESE IMPORTANT SAFETY INSTRUCTIONS!

After reading these safety instructions, ensure they are kept in a place allowing easy viewing at all times by the appliance user.

●Electrical Conditions



WARNING: This symbol on the appliance means “Do not use this appliance near water”. Do not use this appliance near bathtubs, showers, basins or other vessels containing water.

1. After use, be sure to set the “I/O slide switch” to the “0” setting and remove the plug from the power outlet.

Failure to do so may create a fire hazard or result in fire.

2. Always ensure the appliance is operated on an electric power source matched to its rated voltage.

Failure to do so may result in fire, electric shock, or burns.

3. Stop using it immediately if the cord or plug is damaged or becomes hot; or the plug fits loosely in the outlet.

Doing so may result in fire, electrical shock, short-circuit, or burns.

4. Avoid cutting, damaging, or modifying the cord. Avoid pulling, twisting, or bending the cord with unnecessary force. If the cord is damaged or becomes hot, stop using it immediately and contact an authorized Panasonic service center for repair.

5. Only qualified personnel should repair or disassemble the appliance.

6. Do not stick metallic objects, such as hair pins, into the negative ion nozzles.

Doing so may result in fire, electrical shock, or accidents.

7. This appliance is not intended for use by persons (including children) with reduced physical, sensory or mental capabilities, or lack of experience and knowledge, unless they have been given supervision or instruction concerning use of the appliance by a person responsible for their safety.

Children should be supervised to ensure that they do not play with the appliance.

8. Do not store the appliance near bathtubs, washbasins, or other vessels, and areas with high humidity.

Doing so may weaken the insulation properties and result in electrical shock or fire.

9. **Keep the cord away from the heated surfaces.**
Wrapping the cord around the appliance may cause fire and/or electric shock.

10. **Never operate the appliance if it has a damaged power cord or plug, if it is not working properly, or if it has been damaged or dropped into water.**
Return the appliance to an authorized Panasonic service center for examination or repair.

11. **As the handle of the appliance incorporates electrical components, the appliance must be fixed so that the handle, when fully extended, is out of reach of a person using a bath or shower.**

12. **When the appliance is used in a bathroom, unplug it after use since the proximity of water presents a hazard even when the appliance is switched off.**

13. **For additional protection, the installation of a residual current device (RCD) having a rated residual operating current not exceeding 30 mA is advisable in the electrical circuit supplying the bathroom. Ask your installer for advice.**

14. **Do not get the appliance wet.**
Doing so may result in electrical shock, short circuit, or fire.

15. **Only use the appliance when the hands are dry.**

16. **The iron plates of this appliance are hot when in use.**
Do not let eyes or bare skin touch the heated surfaces.

17. **Do not place the heated appliance directly on any surface while it is hot or plugged in.**

18. **Do not bring the appliance close to your face with the press plate closed when taking a lock of hair.**
Doing so may result in burns. To avoid burns, always take a lock of hair with the press plate opened.

19. **Do not leave the appliance unattended while the power is on.**
The iron plates are extremely hot and may cause fire or the discoloration or warping of nearby objects.

20. **Do not use the appliance on infants or for anything other than hair.**
Doing so may result in burns, fires, or damage to the appliance.

21. **Do not drop the appliance or subject it to impact.**
Do not use the appliance if damaged.
Doing so may result in electrical shock or the hair straightener catching on fire.

22. **Do not apply any spray directly onto the appliance.**
Doing so may result in malfunction or fire.

23. **Do not forcibly open the press plate.**
Doing so may result in a malfunction.

24. **Do not place or store the appliance in or near plastic or other materials that may melt until the press plate and iron plate have cooled.**
Doing so may weaken the insulation properties and result in electrical shock or fire.

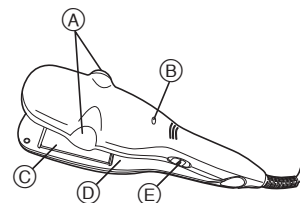
25. **Always grasp the plug while unplugging.**
Failure to do so may result in electrical shock, burns, or fire.

26. **This appliance is designed only for household use.**

27. Only use the appliance for the intended purposes.
28. If the supply cord is damaged, it must be replaced by the manufacturer, its service center, or similarly qualified persons in order to avoid a hazard.
29. If the cord or plug is damaged, stop using it immediately and contact an authorized Panasonic service center.
30. When not in use, disconnect the appliance and store it in a dry and safe location, keeping it out of the reach of children. Do not jerk or pull on the cord where it connects to the plug. Do not wrap the power supply cord around the appliance. Allow the cord to hang loose and straight.
31. Exercise caution when using the appliance. The iron plates of the appliance will get very hot and avoid contact with the skin after the appliance is switched on.
32. This hair straightener is maintenance free. If cleaning is necessary, disconnect the hair straightener from the power source and wipe the exterior with a damp cloth.
If any abnormal condition occurs, unplug the hair straightener and allow it to cool and take it to an authorized Panasonic service center for repair. Never attempt to repair the hair straightener by yourself.

Parts identification

- Ⓐ Negative ion nozzles
- Ⓑ LED indicator
- Ⓒ Iron plates
- Ⓓ Press plate
- Ⓔ I/O slide switch



How to use the hair straightener

1. Switch on the hair straightener.
 - The LED indicator will light up.
2. Wait about 3 minutes till the iron plates become hot.
3. Clamp strands of hair between the iron plates.
 - Make sure that the hair is centered between the iron plates.
4. Pull the hair straightener straight slowly towards the tips (ends) of your hair, and then loosen your grip slowly.
 - Excessive pressure may cause damage to hair.
5. Repeat this process, applying sufficient pressure as you pull the hair to achieve the desired effect according to hair type.
6. After use, switch off the power and unplug the hair straightener from the electrical outlet.

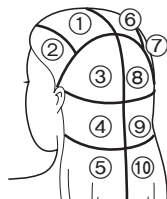


Blocking for beautiful straightening

For beautiful straightening, bundle and pin to hold your hair in the order shown in the illustration.

Although it may appear to be time consuming, it is the fastest way to straighten hair neatly.

- Perform blocking on dry hair.



How to bundle your hair

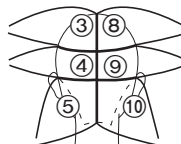
1 Part your hair evenly to the left and right.

2 Further divide your hair.



3 Divide the hair on the backside of your hair into six parts from top to bottom.

- Twist each bundle of hair into a roll, then pin to hold.



Brushing order

Start brushing from the bottom on the back of your head in the order of ① to ⑤.



What are negative ions?

Negative ions are particles that combine negatively charged oxygen and moisture in the air. Negative ions are invisible to the naked eye because their diameter is just 1/1000th that of a particle of steam. They are generated via a high-voltage discharge method known as a corona discharge.

The effect of ion does not show up too much on person with features described below.

- Having original curl hair.
- Having hair to be furled easily.
- Having wonderful and tidy hair.
- Having hair straightening perm no more than 3-4 months.
- Having short hair.

Some odd smell will come along with ion emission, but it does not do harm to health at all.

Cleaning the hair straightener

- Clean the hair straightener after the press plate and iron plate have cooled and with the plug removed from the power outlet.
- To clean the hair straightener, use a cloth that has been soaked in soap and water and well wrung out. Do not use benzine, thinner, or alcohol. Doing so may crack or discolor the surface of the hair straightener.

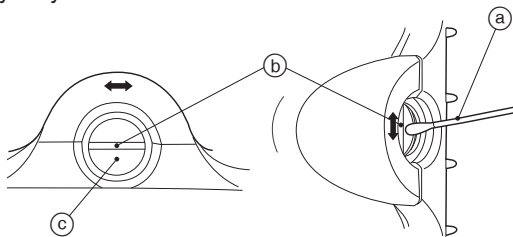
To ensure that the hair straightener does not lose its ability to release negative ions, clean the two negative ion nozzles (left and right side) regularly (about once every 6 months) as described below.

●Cleaning method of negative ion nozzles

Clean only after turning off the power and removing the power cord from the power outlet.

Use a cotton swab (a) to lightly rub (about 5 times) the center of the part (b) that is inside of the negative ion nozzles (c).

We recommend the thin cotton swabs made for use with babies. Although regular cotton swabs will work, they may be hard to insert into the nozzles.



Specifications

Product name	Straightener
Product model	EH-HS50
Power supply	a.c 220 V ~50 Hz
Power consumption	25 W
Dimensions	52 (W) × 97 (D) × 271 (H) mm
Place of origin	China
Produce date	Please see on the commodity to engrave
Execution standard	GB4706.1, GB4706.15, GB4343.1 GB17625.1, Q/SXDGWB 8

Specifications are subject to change without notice.



MEMO

[illegible]



MEMO

This image shows a full page of blank white paper with horizontal ruling lines. The lines are evenly spaced and run across the width of the page, providing a template for writing or drawing. There are no margins, text, or other markings on the paper.

Panasonic

保修证

保修条款

有关保修期内Panasonic商品的保修（无偿修理），从购入之日起开始实施。

1.保修期内的商品只可在Panasonic认定维修店进行保修；保修时，请出示本保修证及购机发票。
以下两点需特别注意：

- a. 本保修证遗失后不再补发，请妥善保管。
 - b. 本保修证仅限于中华人民共和国内有效（香港、澳门、台湾三地区暂不可使用）。
- 2.自购入之日起在以下期间内，在正常使用中发生故障的情况下进行保修。

- 整机（除商用产品）.....2年内无偿
- 整机（商用产品）.....6个月
- 内刀头、外刀网、刀头、辅助装置、附件.....有偿提供

3.属下列情况之一者，即使在保修期内，也不能以保修对待，但是可以实行收费修理：

- a. 未按商品使用说明书要求使用、维护、保管而造成损坏的；
- b. 因不正确操作、电源不正常、破损（如：摔落等）而造成损坏的；
- c. 不经Panasonic认定维修店维修人员拆卸造成损坏的；
- d. 不能出示本保修证及有效购机发票的；
- e. 保修证上记录的信息与商品实物标识不符或者涂改的；
- f. 因不可抗力因素（如雷电、地震、火灾、水灾等）造成损坏的。

4.本保修条款只适用于消费者个人为生活消费需要而购买使用的场合，不适用于经营性等使用。

【商品信息】

商品名称: 直发器 产地: 中国·广州

商品型号: EH-HS50 制造编号:

【保修回执】以下回执是保修的重要依据，请勿自行撕下

商品型号: EH-HS50 制造编号:

保修结算 4

商品型号: EH-HS50 制造编号:

保修结算 3

商品型号: EH-HS50 制造编号:

保修结算 2

商品型号: EH-HS50 制造编号:

保修结算 1

商品型号: EH-HS50 制造编号:

促销员留存



保修证管理编码印刷处：

本保修证内容如有变更恕不另行通知

[销售记录] 未完整记录以下信息将无法进行保修

销售店
(盖章)

销售日期：_____ 发票号码：_____

安装调试日期：

顾客姓名：_____ 联系电话：_____

顾客地址：_____ 邮 编：_____

销售店名称：_____ 销售店电话：_____

销售店地址：_____ 邮 编：_____

[维修记录]

维修店名称：_____ 联系电话：_____

送修日：_____

维修店地址：_____ 邮 编：_____

故障内容：_____ 故障原因：_____

维修内容：_____

维修员签字：_____ 交验日期：_____

维修店名称：_____ 联系电话：_____

送修日：_____

维修店地址：_____ 邮 编：_____

故障内容：_____ 故障原因：_____

维修内容：_____

维修员签字：_____ 交验日期：_____

维修店名称：_____ 联系电话：_____

送修日：_____

维修店地址：_____ 邮 编：_____

故障内容：_____ 故障原因：_____

维修内容：_____

维修员签字：_____ 交验日期：_____

Panasonic客户咨询服务中心：

400-810-0781；800-810-0781 (固定电话)

Panasonic官方网站：<http://panasonic.cn>

松下电器 (中国) 有限公司





MEMO

This image shows a single sheet of white paper with horizontal ruling lines. The lines are evenly spaced and run across the width of the page. There are no margins, text, or other markings on the paper.

松下电工・万宝电器（广州）有限公司 (PEWWBG)
Panasonic Electric Works Wanbao (Guangzhou) Co., Ltd.

工厂地址： 广州市番禺区市广路万宝基地
(Address): Wanbao Base, Shiguang Road, Panyu District,
Guangzhou
电话(Tel): (020)84770333
传真(Fax): (020)84773033
邮政编码(Post Code): 511495
原产地： 中国

中国印刷
Printed in China
0000000000 X0509-0
发行：2009 年 5 月