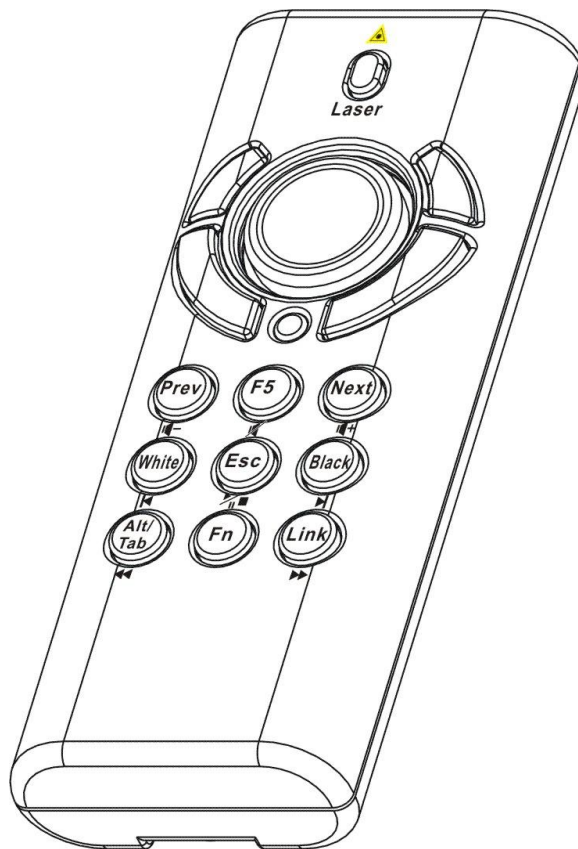


4-in-1 Wireless Media Presenter (2.4GHz)

User's Manual



Be sure to carefully read this User's Manual first for the proper use of the 4-in-1 Wireless Media Presenter and keep it for future reference.

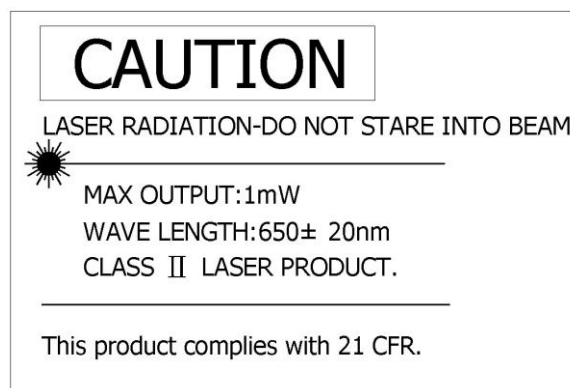
Information in this document is subject to change without notice. No part of this document may be reproduced or transmitted in any form or by any means, electronic or mechanical, for any purpose, without the express written prior permission of the seller.

The seller provides this document without warranty, or condition of any kind. The seller may make improvements or change in the product described in this documentation at any time.

Other product and company name herein may be the trademarks of their respective owners.

© 2005 All rights reserved.

IMPORTANT SAFETY AND HEALTH INFORMATION



WARNING! RISK OF INJURY!

Laser beam can cause permanent damage to eyes. Do not look into the laser beam or shine the laser beam into your eyes, other peoples' eyes, or pet's eyes.

WARNING! RISK OF INJURY!

Keep this device away from Children. This is a working tool, not a toy or entertainment device. It should only be used by adults.

Trademarks:

Windows, Windows Vista, Windows Media, Microsoft and PowerPoint are registered trademarks of Microsoft Corporation.

iTunes is a registered trademarks of Apple Inc.

PowerDVD is a registered trademark of CyberLink Corp.

WinDVD is a registered trademark of InterVideo, Inc.

Other trademarks and registered trademarks not listed above may be used in this manual.

Table of Contents

Chapter 1 Introduction

| | |
|----------------------------|---|
| ■ What's the benefits..... | 4 |
| ■ Equipment checklist..... | 5 |
| ■ System requirements..... | 5 |

Chapter 2 Getting Started and Operation Mode

| | |
|---|---|
| ■ Inserting the battery..... | 6 |
| ■ Connecting the USB receiver..... | 6 |
| ■ Opening PowerPoint..... | 6 |
| ■ Turning on the laser point..... | 6 |
| ■ Operation mode..... | 6 |
| ■ Take out/Put back the USB Receiver..... | 7 |

Chapter 3 Using the 4-in-1 Wireless Presenter

| | |
|--|----|
| ■ PowerPoint® Presentation Mode (Part I)..... | 8 |
| ■ PowerPoint® Presentation Mode (Part II)..... | 9 |
| ■ Multimedia Player Mode..... | 10 |

Chapter 4 Additional Information

| | |
|-----------------------------|----|
| ■ Specifications..... | 11 |
| ■ Care and Maintenance..... | 11 |

| | |
|------------------------------|-----------|
| Trouble Shooting..... | 12 |
|------------------------------|-----------|

| | |
|--|-----------|
| Special remarks on using Multimedia Player function.... | 13 |
|--|-----------|

| | |
|-------------------|-----------|
| 中文說明書..... | 15 |
|-------------------|-----------|

Chapter 1 Introduction

Thank you for choosing this 4-in-1 Wireless Media Presenter
— “Totally Control Your Presentation and PC Multimedia”

■ *What's the benefits*

□ **4-in-1 multi-function**

This 4-in-1 Wireless Media Presenter combines the features of the PowerPoint Controls, Laser Pointer, Wireless Mouse and PC Multimedia Remote Control into one elegant device. Excellent 2.4GHz RF technology enables you to control the computer up to 100 feet (30 meters) away from the receiver (connected to the USB port), the laser pointer functions up to 130 feet (40 meters) from the target.

□ **Making your presentation easier and more successful**

When making presentation, with this 4-in-1 Wireless Media Presenter, you don't need to stand beside your notebook computer or have an additional person to assist you, nor do you need to aim at the USB receiver.

□ **Having your own way to your PC Multimedia**

When enjoying your PC multimedia, this 4-in-1 Wireless Media Presenter provides you with a single tool to manage your Windows Media Player or iTunes running on Windows®.

□ **Easy to use**

This 4-in-1 Wireless Media Presenter is a USB plug-and-play device with no additional software required. The laser beam safety switch protects people from unintentional laser beam into human eyes.

□ **Easy to carry**

The slim RF receiver integrated with the Presenter enables this product to be compact and easy to carry – especially convenient for business travelers.

■ ***Equipment Checklist***

Carefully unpack your 4-in-1 Wireless Media Presenter, and make sure you have all the following items:

| | | |
|--------------------------|--|---|
| <input type="checkbox"/> | 4-in-1 Wireless Media Presenter | 1 |
| <input type="checkbox"/> | USB Receiver (attached in the back of Presenter) | 1 |
| <input type="checkbox"/> | AAA Batteries | 2 |
| <input type="checkbox"/> | User's Manual | 1 |
| <input type="checkbox"/> | Carry case (might be optional) | 1 |

■ ***System Requirements***

Windows® 98SE/ME/2000/XP/Windows Vista™/Windows 7

An available USB port

Chapter 2 Getting Started and Operation Mode

■ *Inserting the batteries*

Open the battery cover in the product rear side and insert two AAA batteries.

■ *Connecting the USB receiver*

Take out the USB receiver in the back (please refer to page 7), label side down and plug it exactly into an USB port. Do as follows, depending on operating system:

□ **Windows® 2000 / XP / Windows Vista™ / Windows 7**

The operating system identifies the receiver as a “USB Human Interface Device” and begins installation automatically. Follow the instructions or messages on the screen to complete the installation.

□ **Windows® 98 SE/ME**

The system prompts you to insert the operating system CD-ROM. Follow the instructions on the screen to install the required drivers.

■ *Opening PowerPoint and other necessary files on your screen*

■ *Turning on the laser pointer*

Press “Fn” and “Laser” button on the product front simultaneously till the Upper-left LED blinking in orange.

■ *Operation Mode*

There are two operation modes: One is 『PowerPoint Presentation Mode』, another is 『Multimedia Mode』, Default setting in 『PowerPoint Presentation Mode』. Please make sure you are on the right mode you want.

Note: There are 3 LED on the product front which combines 4 modes below:

- 1 **Orange LED blinks:** At PowerPoint mode and laser pointer is turned on.
2. **Blue LED blinks:** At Multimedia mode
3. **Red LED lights:** Light when battery power is low.

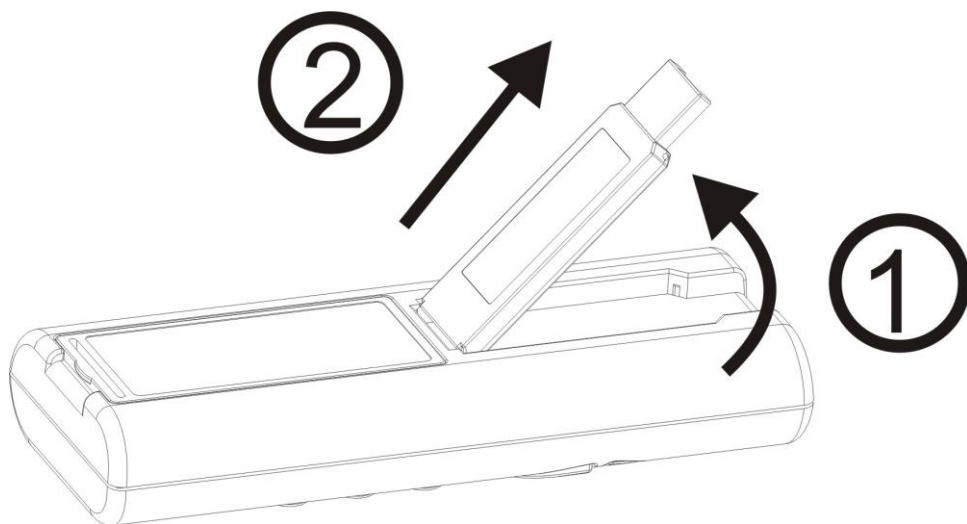
PS Please change to new batteries to have normal function.

4. **No LED blinks or lights:** At PowerPoint mode and laser pointer is not turned on.

■ ***Take out the USB receiver***

Figure 1

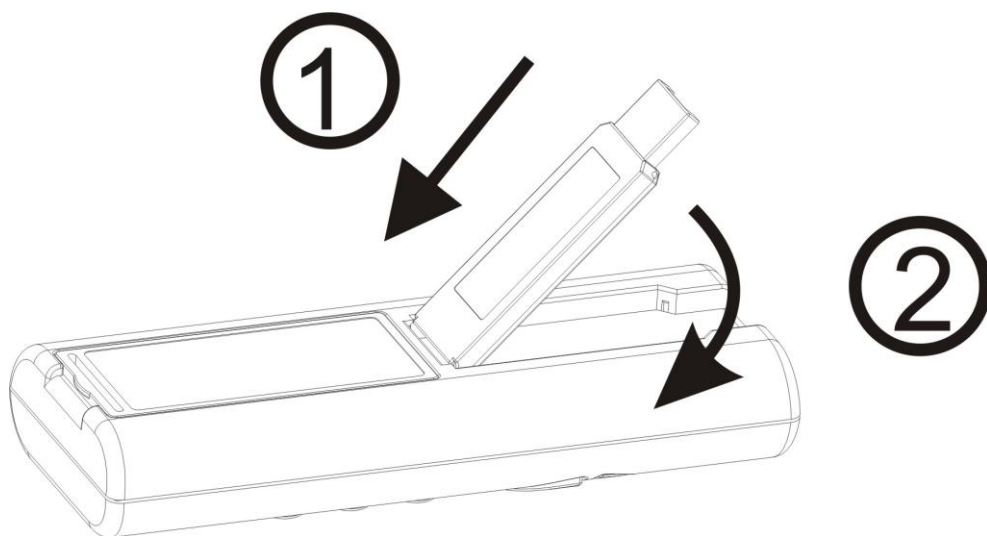
Pull up the USB receiver as the following figure and then take the USB receiver out from the compartment.



■ ***Put back the USB receiver***

Figure 2

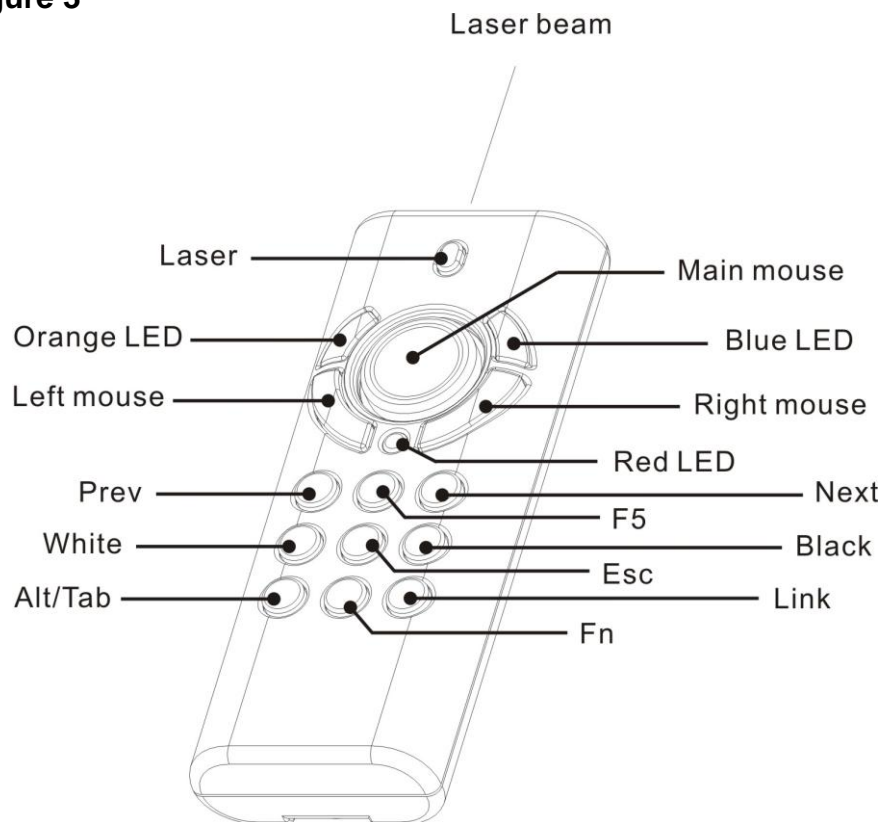
Insert the bottom of the USB receiver with the label side up and then press the USB receiver down to the compartment firmly.



Chapter 3 Using the 4-in-1 Wireless Media Presenter

■ PowerPoint Presentation Mode (Part I)

Figure 3

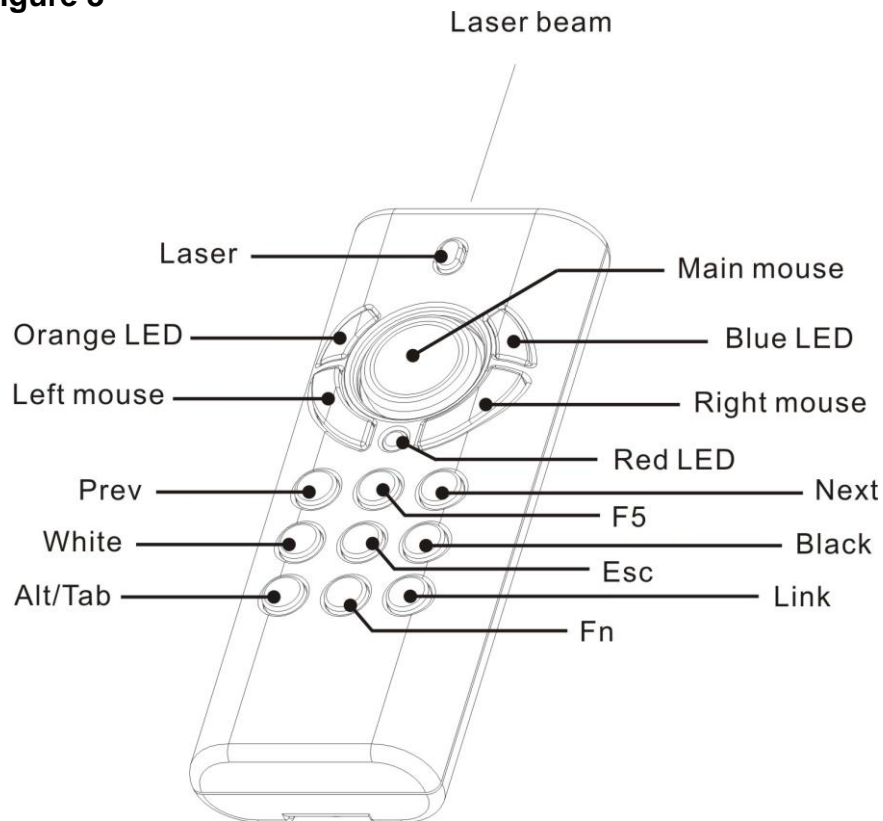


| Print in key | Function description |
|-------------------|---|
| Laser | 1. Press Fn and Laser keys simultaneously till Orange LED blinking in orange to turn on or off laser pointer 2. After turned on laser pointer, press Laser key to shoot the laser beam Note : The laser will automatically shut off after 30 minutes idling time |
| Orange LED | Regularly blinks when laser pointer is turned on |
| Red LED | Lights when battery power is detected lower than 2.5V Note : The control will still be available for a short time but suggest replacing new batteries soon |
| Mouse keys | Use main and left/right mouse keys as common mouse |
| F5 | Click to start the slide show |
| Esc | Click to end the slide show |
| Next | Click to go to next slide |
| Prev | Click to go to previous slide |
| Black | Click to turn the presentation screen black; one more click to come back |
| White | Click to turn the presentation screen white; one more click to come back |

(Please go to the **next page** for further indication at PowerPoint Presentation Mode)

■ PowerPoint Presentation Mode (Part II)

Figure 3



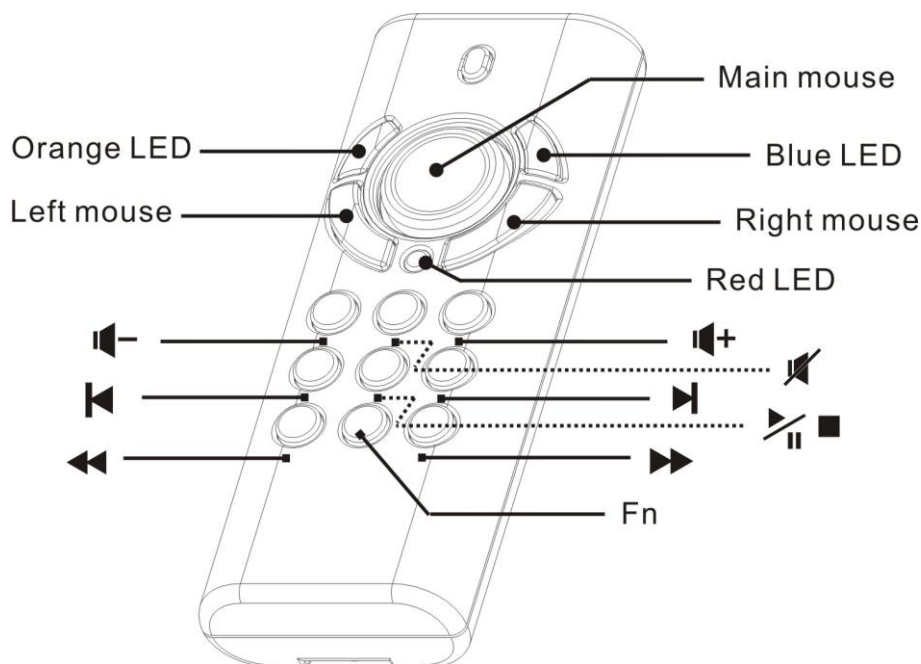
| Print in key | Function description |
|-------------------------------------|--|
| Fn | <ul style="list-style-type: none"> — Mode change : Press and hold for 1 second and release to change modes between PowerPoint Presentation mode and Multimedia Player mode — Turn on or off laser pointer : Press Fn and Laser keys simultaneously till Orange LED blinking in orange to turn on or off laser pointer |
| Link (Use with Fn key) | <ol style="list-style-type: none"> 1. Click the Link key on the USB receiver until the LED on USB receiver lights up. 2. Press Fn and Link keys simultaneously until the LED on USB receiver blinks or 3 LEDs on product front blink in turn <p>Note: To implement ID change only when this product is interfered by other 2.4GHz device(s) or when 2 or more of this product are to be used at a range within 30 meters at the same time</p> |
| Alt/Tab (Use with Fn key) | <p>Press & hold Fn key and then press Alt/Tab key to choose the required file icon. Release both keys to open the required files. Use the same process to go back to PowerPoint slide</p> |









Note: Please make sure you are on the right mode you want to use.

Chapter 3 Using the 4-in-1 Wireless Media Presenter

■ **Multimedia Player Mode** *(Note: Laser has no function at this mode)*

Figure 4



| Print on case | Function description |
|---|---|
| Mouse keys | Use main and left/right mouse keys as common mouse |
| Blue LED | Regularly blinks when at Multimedia Player mode |
| Red LED | Lights when battery power is detected lower than 2.5V Note : The control will still be available for a short time but suggest replacing new batteries soon |
|  | Click to start play; one more click to pause. Press and hold for 1 second to stop play |
|  | Click to next chapter |
|  | Click to previous chapter |
|  | Click for fast forward Note : For DVD play control, the fast forward maybe able to choose forward speed |
|  | Click for fast rewind Note : For DVD play control, the fast rewind maybe able to choose rewind speed |
|  | Click to turn up volume |
|  | Click to turn down volume |
|  | Click to turn on mute function; one more click to turn off mute function |
| Fn | Press and hold for 1 second to change modes from Multimedia Player to PowerPoint Presentation. Note : All combined function together with Fn key cannot be executed at Multimedia Player Mode. |

Chapter 4 Additional Information

■ **Specifications**

System

Frequency range : 2400~2483MHz

Remote range : Approx. 100 feet (30 meters) indoors,
328 feet (100 meters) outdoors

Operating voltage : Remote control: 2.5V~3.3V, Laser: 2.6V~3.3V

Power : AAA batteries * 2

Power : Normal operation <10mA

Laser operation < 20mA

Sleep < 10uA

Output power: Under 1mW

□ **Dimensions**

Presenter : 105 (H) x 40 (W) x 18 (D) mm

USB receiver : 49 (L) x 16 (W) x 3.5 (H) mm

Weight

Presenter : About 63.2 grams (include batteries)

USB receiver : About 2.6 grams

□ **Environmental Requirements**

Temperature :

Operating : 0°C (32°F)~60°C (140°F)

Non-operation : -10°C (14°F)~65°C (149°F)

Humidity(non-condensing) :

Operating : 10%~85% RH

Non-operating : 10%~95% RH

□ **Laser**

Semiconductor laser ($\lambda = 650 \text{ nm}$), emission duration : Continuous

Laser output power : Max.0.95 mW

Note: Design and specifications are subject to change without prior notice.

■ **Care and Maintenance**

- For cleaning, you are advised to use a soft, slightly moistened cloth.
- Avoid using solvents or abrasive substances.
- Do not open the presenter: for maintenance, consult qualified staff only.

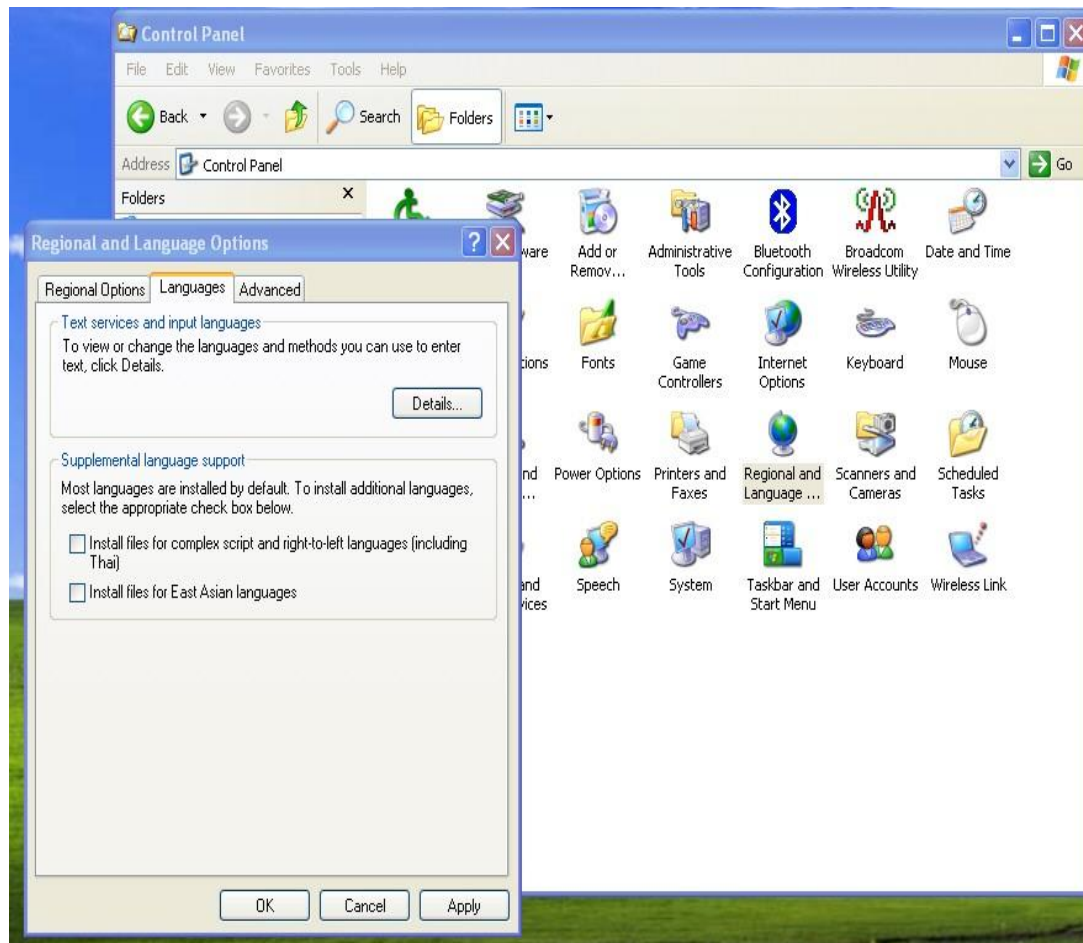
Trouble Shooting

| Question | Possible cause | How to resolve |
|---|--|---|
| Need to install software for first use of this product? | | No, this is a plug and play device. |
| Need to link ID before first use? | | No need |
| Possible to use 2 or more of this product in a room at the same time? | | Yes, but please implement ID Link in advance to avoid interference (see page 9 for how to link) |
| Laser pointer malfunction | 1. At Multimedia Play Mode 2. Forget to turn on laser pointer 3. Laser function has been automatically off after 30 minutes of idling time | 1. Change to PowerPoint Presentation Mode (see page 9 for mode change) 2&3 To switch on the laser pointer (see page 9 for turn-on laser pointer) |
| Remote control malfunction | Interfered by other RF signal | To Implement ID Link (see page 9 for how to link) |
| Laser pointer and remote control both malfunction | Put batteries in wrong direction or run out of battery power | Check the batteries |

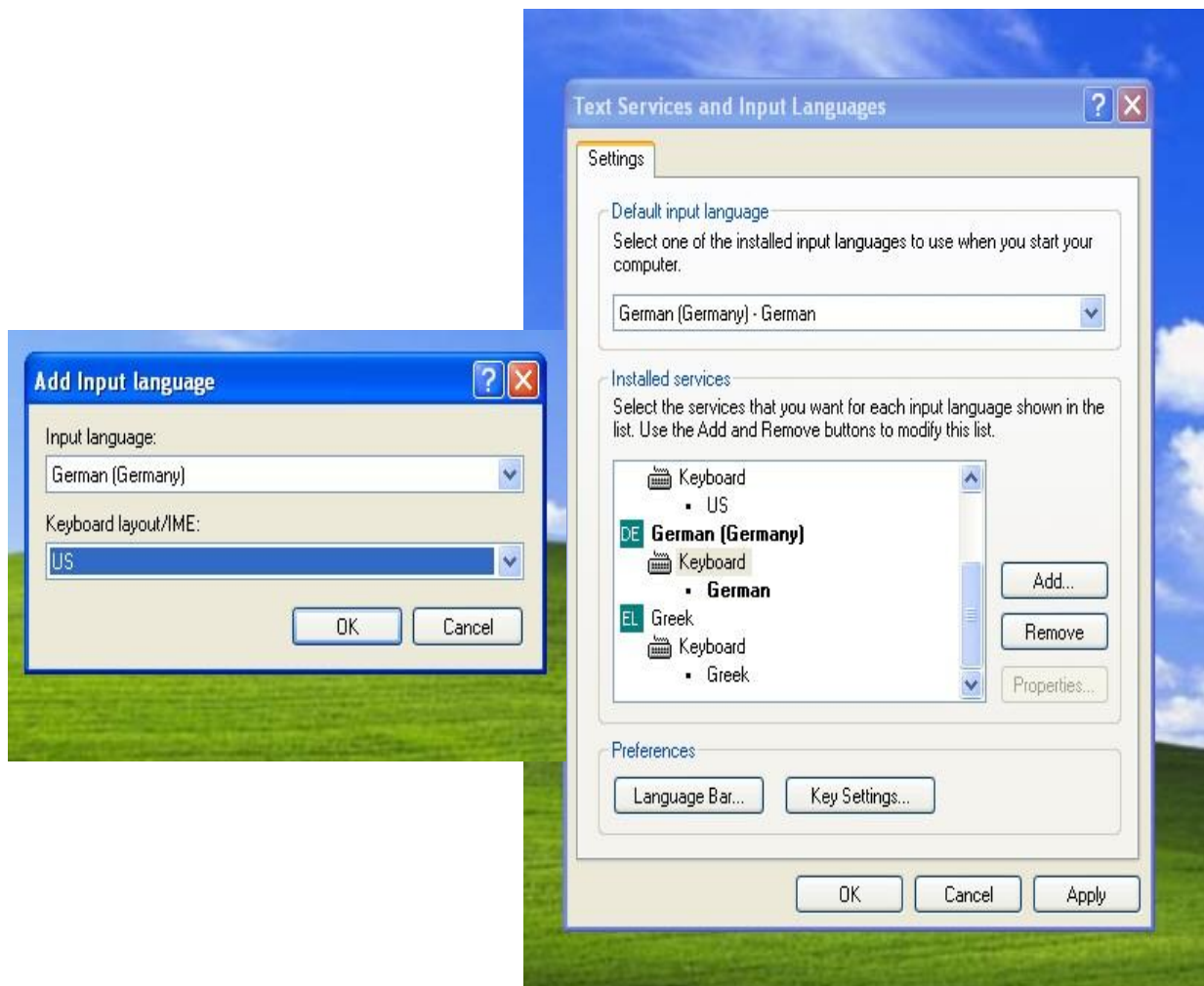
Special remark on using Multimedia Player function

This product is designed to support English keyboard. If you are using other language O/S, please conduct following change before using the multimedia function.

- (a) Go to "Control Panel" -> "Regional and language options" --> "Languages" → click "**Details**"



- (b) Click “**Add**” and choose required language e.g. German at Input language and change Keyboard layout/IME to “US”.

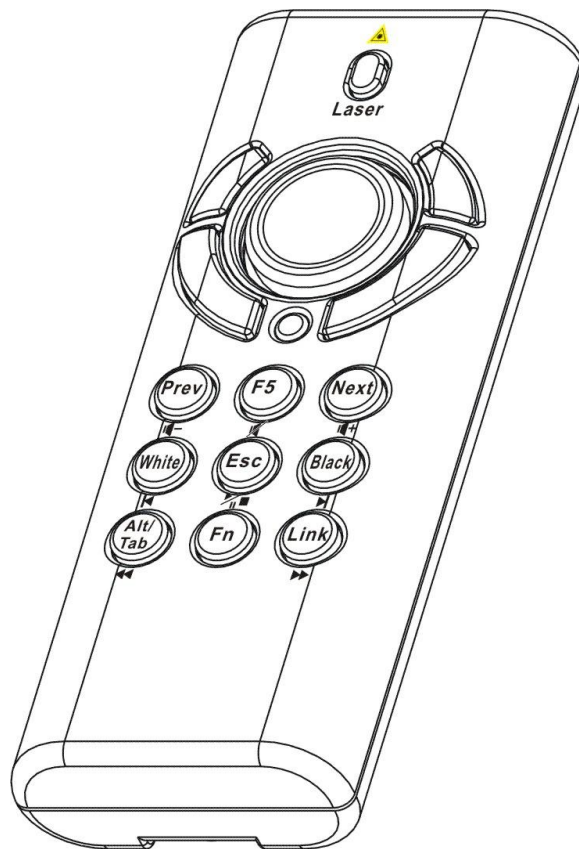


- (c) Execute Mediaplayer e.g. PowerDVD or WinDVD etc.
(d) Move cursor inside the Mediaplayer screen to activate the full screen function.
(e) Select required language e.g. German and English keyboard layout.



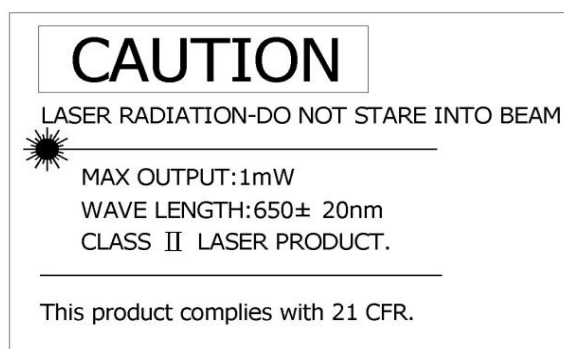
四合一無線簡報器 (2.4GHz)

產品使用說明書



使用前務請詳閱本使用說明，以正確操作本裝置，閱讀後並請妥善保存，以備日後參考。謝謝





(注意：本產品具雷射功能，請勿將雷射光束直射眼睛並避免孩童把玩)

(一)、本產品包含：

- | | |
|---------------------|-----|
| 1. 無線簡報器 | x 1 |
| 2. USB 無線接收器(簡報器背面) | x 1 |
| 3. 四號電池 | x 2 |
| 4. 使用說明書 | x 1 |
| 5. 潛水布套 (可能需另購) | x 1 |

(二)、系統需求：

Windows® 98 SE / Me / 2000 / XP / Windows Vista™ / Windows 7

USB 插孔

(三)、開始操作及模式說明：

1. 請先打開無線簡報器背面之電池蓋，依電極指示方向置入電池。
2. 取出無線簡報器背面之無線接收器，標籤面朝下插入電腦或其他簡報裝置之 **USB** 插孔，並依電腦畫面指示操作。
3. 打開簡報時所須之所有檔案。(建議先將 **PowerPoint** 顯示於簡報銀幕上)
4. 開啟／關閉雷射：先按住無線簡報器正面之功能鍵 (**Fn**)，再按住最上方之雷射開關鍵(**Laser**)，待簡報器 **Mouse** 左上方之 **LED** 指示燈閃爍橘色即表示已啟動雷射功能。重複上述操作關閉雷射。

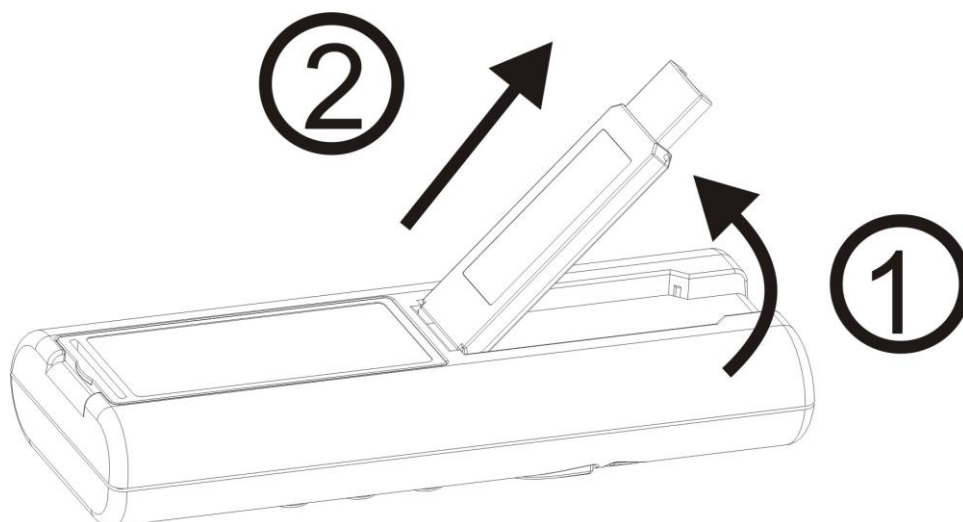
(雷射開關安全設計：靜置三十分鐘後雷射自動關閉，重新開啟雷射須再執行上述程序)

5. 四合一無線簡報器有兩種操作模式，系統預設模式為『簡報模式』，另一模式為『多媒體模式』。使用時請先確認本裝置已切換至您所需要的模式，模式切換請參照第 19 頁說明)。

■ 取出 USB 無線接收器

圖 1

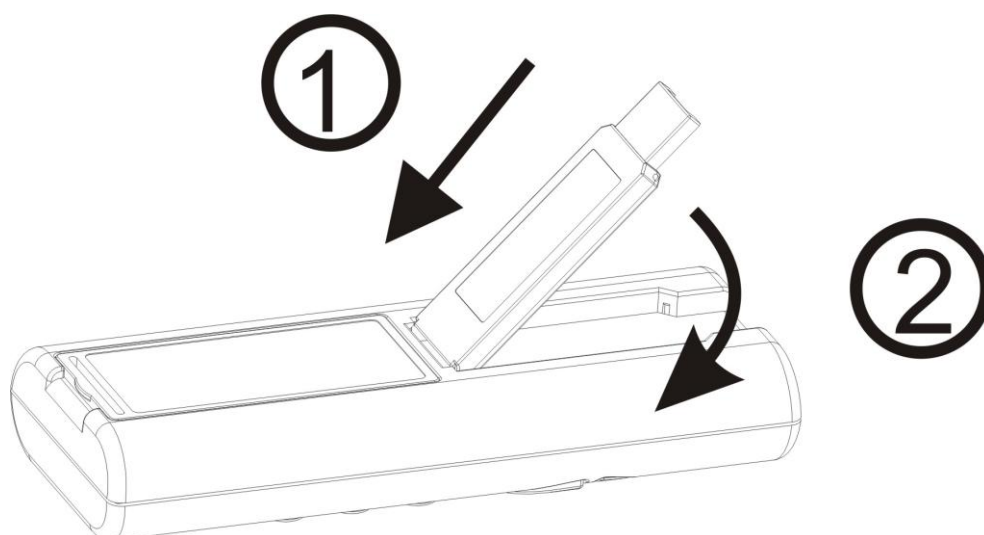
拉起無線接收器前端，然後取出無線接收器。



■ 放回 USB 無線接收器

圖 2

標籤面朝上，先將無線接收器尾端插回儲存槽。壓下無線接收器前端，確認無線接收器固定於儲存槽中。

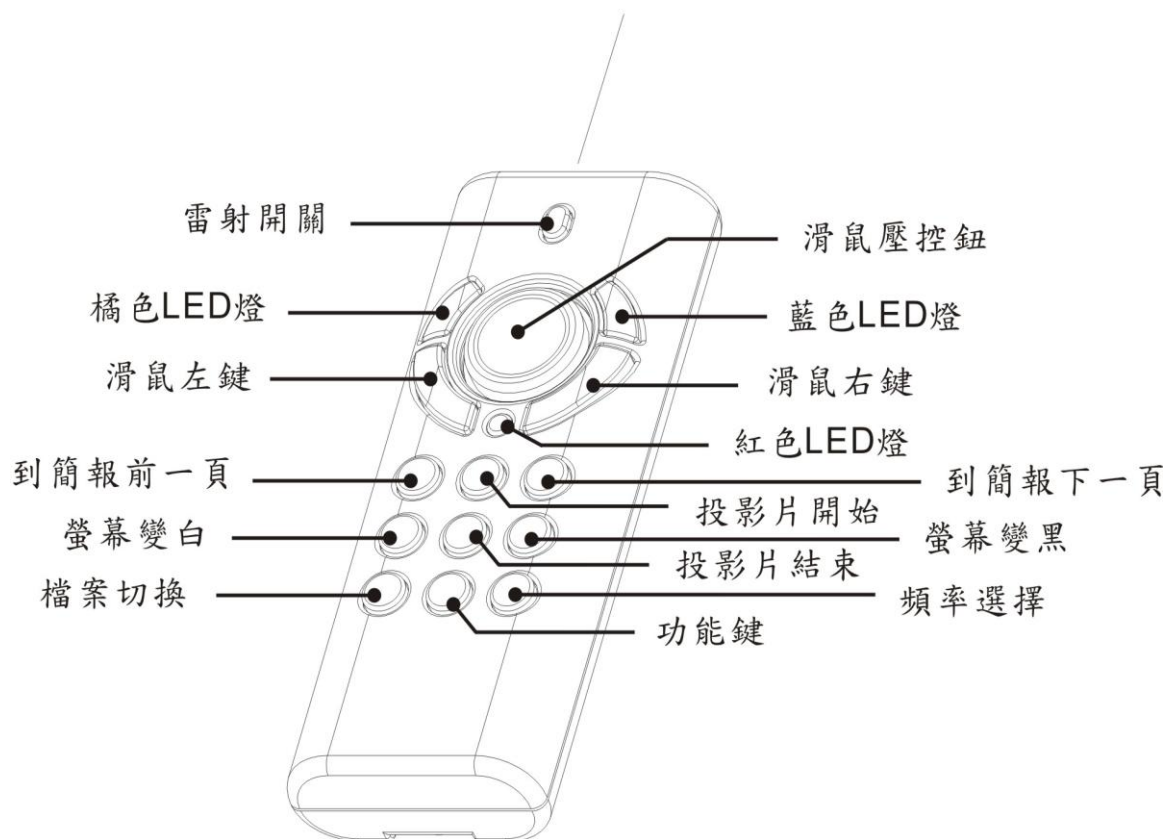


(四)、操作說明：(使用前請務必依本說明書實際操作一次，以便熟悉所有功能)

1. 簡報模式 (I) (注意：請將語言輸入設定在”英文”，不要在注音或倉頡模式)

圖 3

雷射光束射出口

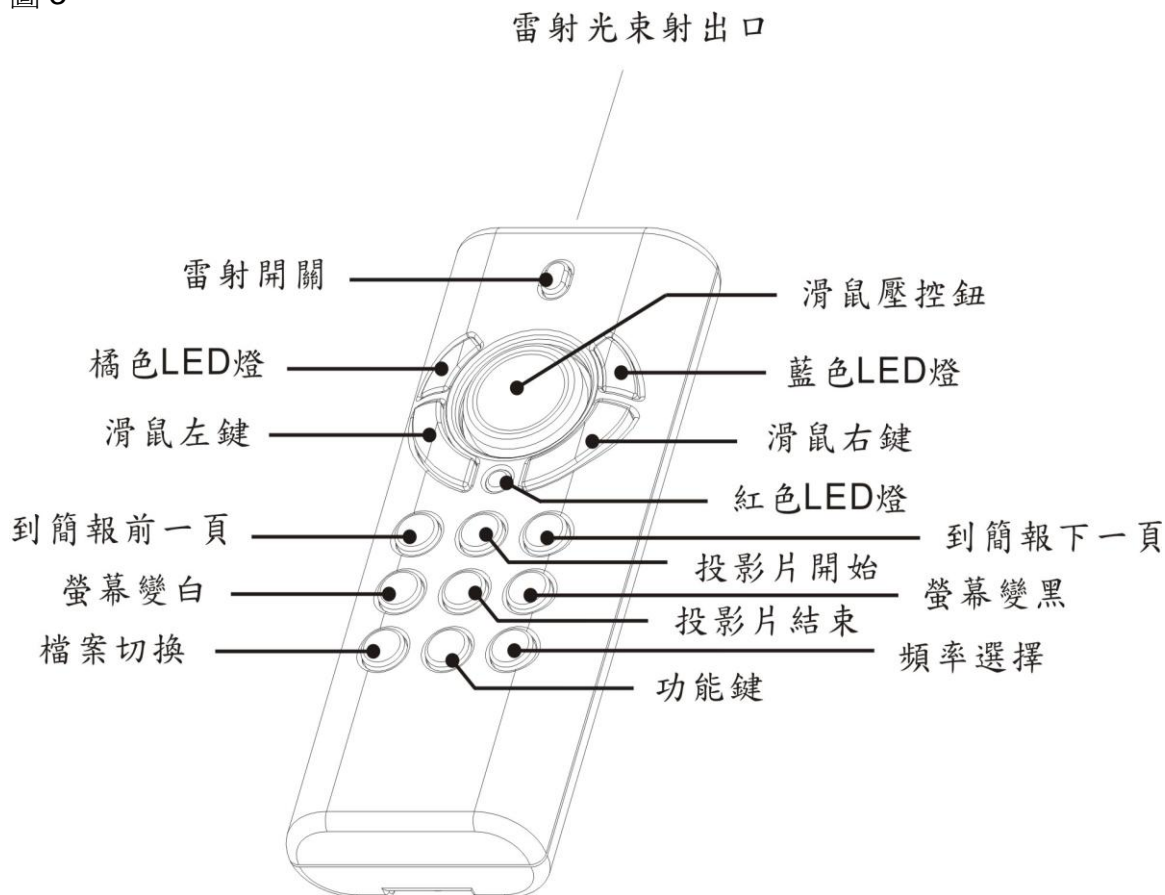


| 按鍵 | 功能 | 操作說明 |
|------------|-------|--|
| Laser | 雷射按鍵 | 1. 同時按 Fn 跟 Laser 按鍵，橘色 LED 燈閃爍時表示成功開啟或關閉雷射 2. 開啟雷射後，單按雷射開關鍵發出雷射光束 注意：30 分鐘以上沒有使用雷射時，雷射功能會自動關閉 |
| Orange LED | 模式指示 | 開啟雷射後，此橘色 LED 燈會定時閃爍 |
| Red LED | 低電力指示 | 電池電壓低於 2.5V 時，此紅色 LED 燈會亮起 注意：LED 紅燈亮起後，電力只能維持短暫使用，建議儘速更換新電池 |
| Mouse keys | 滑鼠 | 使用方式如一般電腦滑鼠 |
| F5 | 投影片開始 | 按一下此鍵，開始投影片放映 |
| Esc | 投影片結束 | 按一下此鍵，結束投影片放映 |
| Next | 下一頁 | 按一下此鍵，到投影片下一頁 |
| Prev | 上一頁 | 按一下此鍵，到投影片上一頁 |
| Black | 螢幕變黑 | 按一下此鍵，簡報播放螢幕全黑； 再按一下此鍵，簡報播放螢幕恢復正常 |
| White | 螢幕變白 | 按一下此鍵，簡報播放螢幕全白； 再按一下此鍵，簡報播放螢幕恢復正常 |

(請繼續翻到下頁，看其他功能說明)

1. 簡報模式 (II) (注意: 請將語言輸入設定在"英文", 不要在注音或倉頡模式)

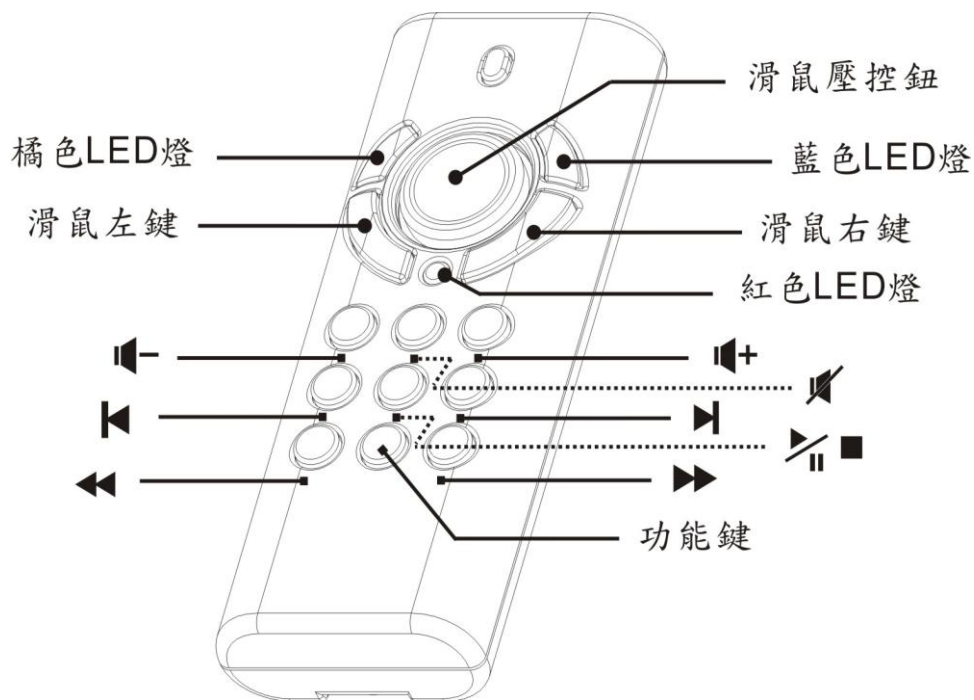
圖 3



| 按鍵 | 功能 | 操作說明 |
|-------------------------------------|---------------------|--|
| Fn | 1.開啟或關閉雷射 2.模式切換 | 1. 同時按 Fn 跟 Laser 按鍵, 橘色 LED 燈閃爍時表示成功開啟或關閉雷射 2. 單按此鍵 1 秒, 可從 "簡報模式" 切換到 "多媒體模式" 或從 "多媒體模式" 切換到 "簡報模式" |
| Link (Use with Fn key) | 頻率聯結 | 1. 先按下 USB 無線接收器上之頻率切換鈕(Link), 此時 USB 上之紅色 LED 燈會亮起 2. 再同時按住簡報器上之 Fn 及 Link 鍵, 直到簡報器上紅/藍/橘 3 顏色之 LED 燈循環閃爍, 表示完成重新聯結 注意: 僅在操作無回應或要在同一處同時使用多支此產品時, 方執行本功能 |
| Alt/Tab (Use with Fn key) | 檔案切換 | 按住 Fn 鍵不放, 再按 "檔案切換" 鍵到所需檔案後, 同時放開 2 鍵即可. 用上述步驟切換到其他檔案或回到原來簡報投影片放映 |

2. 多媒體模式 (注意：本模式下雷射功能無法使用)

圖 4



| 按鍵 | 功能 | 操作說明 |
|------------|----------------|---|
| Mouse keys | 滑鼠 | 使用方式如一般電腦滑鼠 |
| Blue LED | 模式指示 | 在多媒體模式時，此藍色 LED 燈會定時閃爍 |
| Red LED | 低電力指示 | 電池電壓低於 2.5V 時，此紅色 LED 燈會亮起 注意： LED 紅燈亮起後，電力只能維持短暫使用，建議儘速更換新電池 |
| | 播放開始， 暫停，結束 | 按一下此鍵，開始多媒體放映；再按此鍵並迅速放開，暫停投影片放映。 長按此鍵 1 秒決結束放映 |
| | 下一章節 | 按一下此鍵，跳至&播放下一章節 |
| | 上一章節 | 按一下此鍵，播放上一章節 |
| | 快速前進 | 按一下此鍵，快速前進播放章節 |
| | 快速到退 | 按一下此鍵，快速到退播放章節 |
| | 調高音量 | 按一下此鍵，調高音量 |
| | 調低音量 | 按一下此鍵，調低音量 |
| | 靜音 | 按一下此鍵，開啟靜音；再按下此鍵並迅速放開，關閉靜音 |
| Fn | 模式切換 | 單按此鍵 1 秒，從“多媒體模式”切換到“簡報模式” 注意： 所有需與 Fn 鍵同時使用的複合功能無法在多媒體模式下使用 |

產品規格

| | |
|------|---|
| 使用頻率 | 2400~2483MHz |
| 遙控距離 | 室內約 30 公尺；開放空間約 100 公尺 |
| 工作電壓 | 遙控功能：2.5V~3.3V；雷射功能：2.6V~3.3V |
| 電源供應 | 四號電池(AAA)*2 |
| 輸出功率 | 小於 1mW |
| 重量 | 無線簡報器(含電池)：約 63.2 公克 無線接收器：約 2.6 公克 |
| 體積 | 無線簡報器：105mm (長) x 40mm (寬) x 18mm (高) 無線接收器：49mm (長) x 16mm (寬) x 3.5mm (高) |
| 環境 | 溫度： 操作時：0°C (32°F)~60°C (140°F) 非操作時：-10°C (14°F)~65°C (149°F) 濕度(非冷凝狀態)： 操作時：10%~85% RH 非操作時：10%~95% RH |
| 雷射 | 連續式半導體雷射 ($\lambda = 650 \text{ nm}$) 雷射最大輸出功率：0.95 mW |

常見問題

| 問題 | 可能原因 | 解決方法 |
|------------------------------|--|--|
| 第一次使用時需先安裝軟體嗎？ | | 不需要 |
| 第一次使用時需先做頻率聯結嗎？ | | 不需要 |
| 可以在近距離內(三十公尺)同時使用兩支以上無線簡報器嗎？ | | 可以，但在使用前請先執行“重新聯結”以避免干擾 (詳見第 19 頁操作說明) |
| 沒有雷射但遙控功能正常 | 1. 多媒體模式：雷射功能自動關閉 2. 簡報模式：沒有開啟雷射或雷射功能在靜置三十分鐘後自動關閉 | 1. 確認已切換至簡報模式 (詳見第 19 頁操作說明) 2. 開啟雷射 (詳見第 19 頁操作說明) |
| 遙控功能異常但雷射正常運作 | 嚴重干擾 | 請執行“重新聯結” (詳見第 19 頁操作說明) |
| 遙控及雷射同時異常 | 電池沒電或置放方向錯誤 | 檢查電池電量及電極置放方向 |

注意

本裝置若有髒污，請用軟濕布擦拭(僅用清水)，請勿使用酒精、揮發劑、稀釋劑、清潔劑擦拭。