

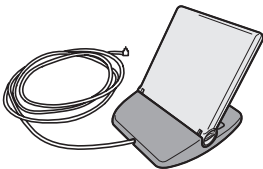
WLE-DAH User Manual

Thank you for purchasing a Buffalo Technology directional antenna. Please read this manual before installing it.

Package Contents

If any items are missing, please contact the vendor where you purchased this product.

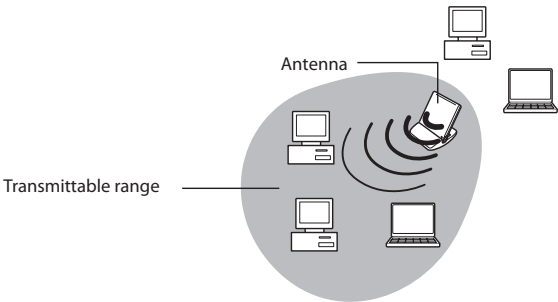
- ☐ WLE-DAH Antenna 1
- ☐ User Manual (this document) 1
- ☐ Antenna adapter 1
- ☐ Screws for wall mounting (4 x 16 mm)..2



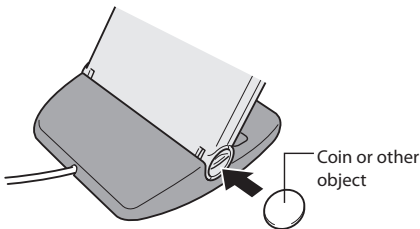
Installation

The antenna and your AirStation should be placed close enough together that the cable is not pulled tight.

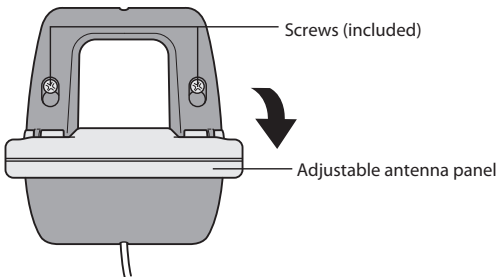
- **This antenna product has forward directionality. Orient the antenna so that it is facing the target communication devices.**
The rear of the antenna has low sensitivity. Orient the antenna so that the front faces your access point.



- **If the adjustable panel of the antenna is loose, use a coin or other object to tighten the screws on each side of the adjustable panel.**

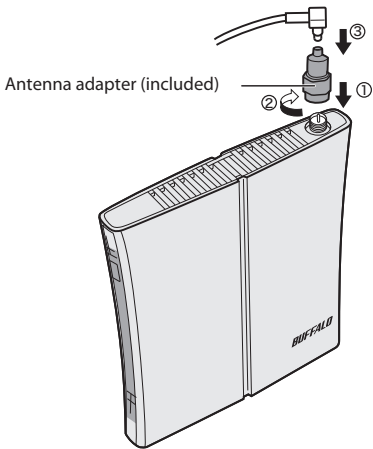


- **This product can also be mounted to a wall.**
To wall mount the antenna, flip the adjustable panel down and screw the base to the wall with the included screws. Then raise the panel to a vertical position.



Connecting the Antenna

This antenna requires an adapter for use with many AirStations. If your AirStation has an RP-SMA antenna connector, screw the included adapter to the antenna connector, then gently snap the antenna's MC connector to the adapter. Be careful! The MC connector is fragile, and broken connectors from mishandling are not covered by warranty.



Product Specifications

Antenna	Flat diversity antenna
Polarization Method	Horizontal
Directivity	Directional; 60° primary dispersion
Frequency Range	2400 to 2483.5 MHz (1 to 13 channels)
VSWR	1.6 or less (including cable)
Maximum Input Power	1W
Cable Size/Length	1.5D-2V/0.6 m; 24 inches
Antenna Gain	Absolute gain 7 dbi or more (including cable loss)
Operating Environment	Temperature: 0 to 40° C; 32° to 104° F Humidity: 20 to 80% (no condensation)
Dimensions (W x H x D)	100 x 122 x 124 mm; 3.9 x 4.8 x 4.9 inches
Weight	300 g; 11 oz

