



## Digital Cordless Phone

### CLT-3625 USER' S MANUAL



## Congratulations

on purchasing our high quality product.  
Please read the manual carefully to find out all features and how your telephone works, so you can get the best out of your new phone.

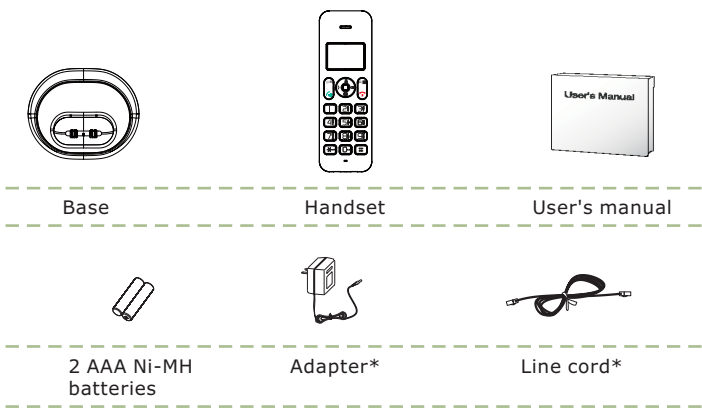
## Safety Precautions

To reduce the risk of electrical shock and injury, please follow these basic safety precautions before using the phone.

- Carefully read and observe the instructions in this manual.
- Follow all warnings marked on the unit.
- When cleaning, unplug the phone first, then use a damp cloth to wipe. Do not use liquid or aerosol cleaners.
- Do not place objects on the line cord that may cause damage.
- Do not use this phone in wet surroundings or environments where there is a risk of explosion.
- Avoid spilling of any liquid on the phone.
- Unplug this phone from the wall outlet and refer servicing to qualified service personnel only.
- Pay attention to the polarity of the batteries, insert the rechargeable batteries in accordance with polarity symbols (this instruction is found in the installing batteries section.)
- Use only **the batteries indicated in the User's Manual**. Never use other ordinary batteries or conventional alkaline batteries. Otherwise this may not only cause personal injuries but also damage to the unit.
- Do not mix exhausted batteries with full batteries. Exhausted batteries shall not be disposed of with the usual household waste or in a fire.
- If the handset will not be used for a long period of time, remove the batteries to prevent possible leakage.
- Use only **the power supply indicated in the User's Manual**.
- Keep the phone out of the reach of children.
- Use the phone only in the described manner.
- Stop using the phone if it becomes damaged.

## Unpacking

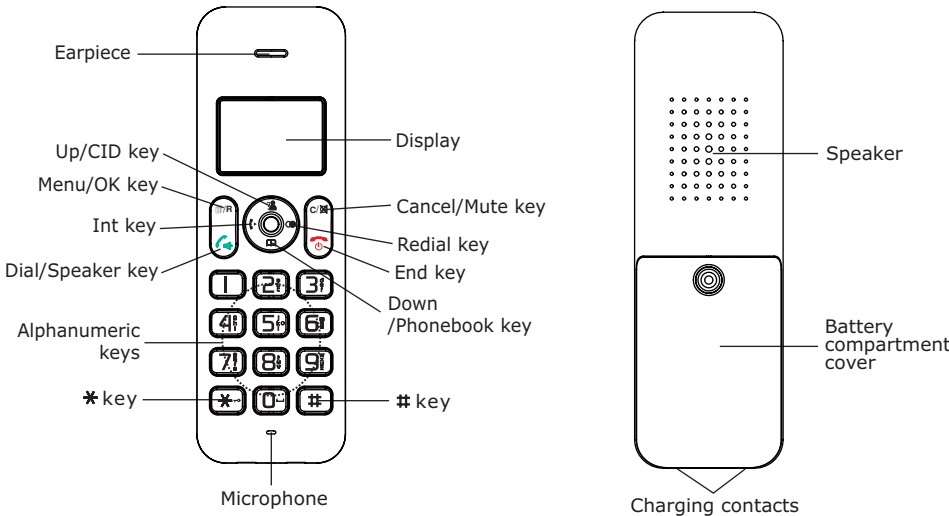
Once you have unpacked your phone, make sure that all the parts shown below are available. If any pieces are missing or broken, please promptly call your dealer.



\*The shape of the plugs can vary according to each country's specification.

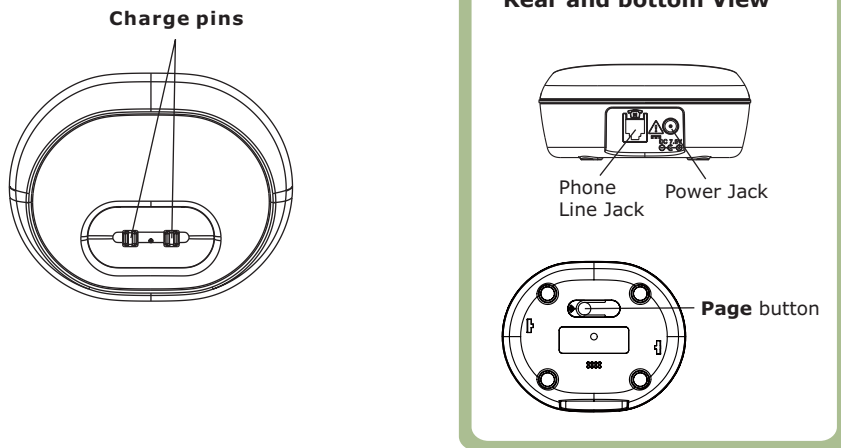
## Phone Layout and Keys Function

### Handset

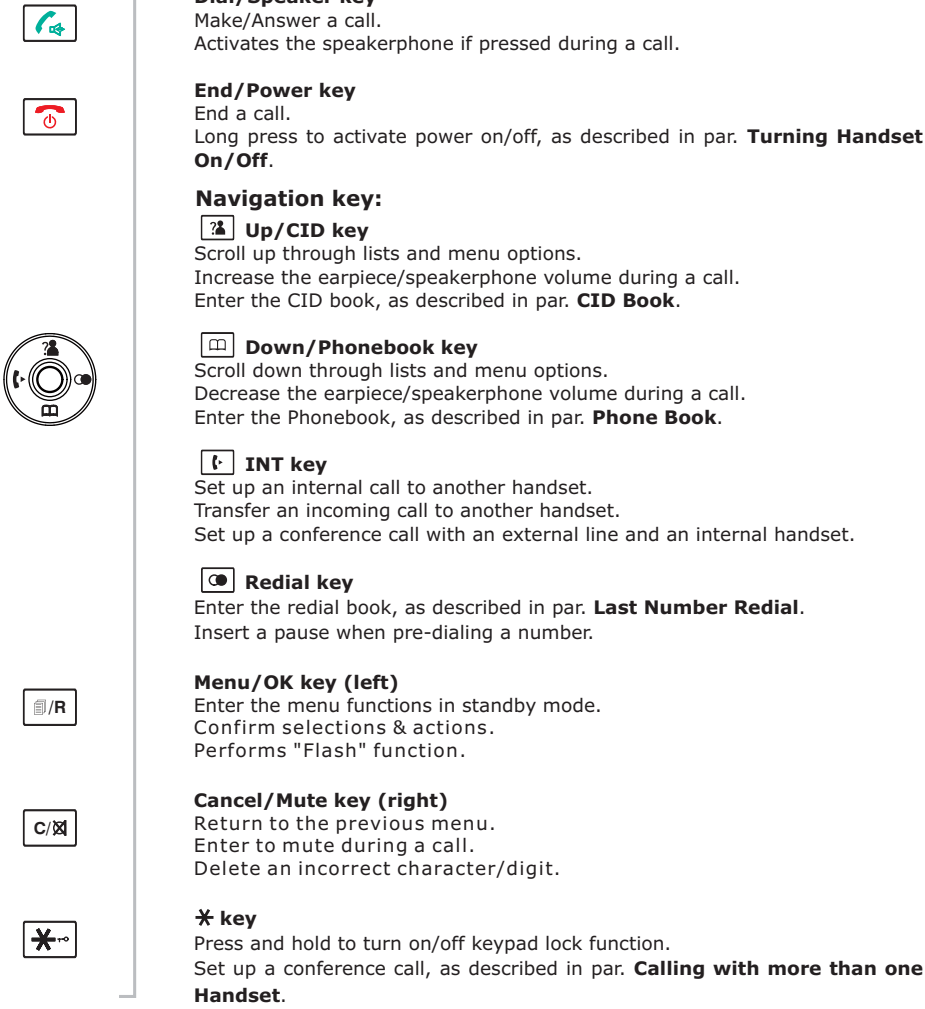


1

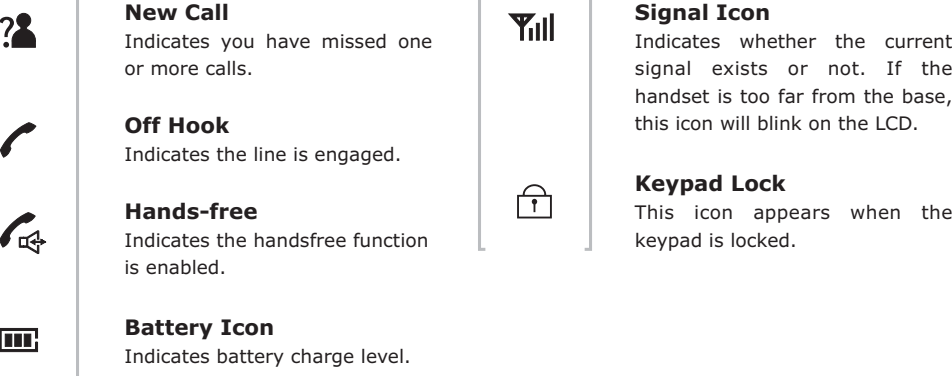
### Base



## Keys Description

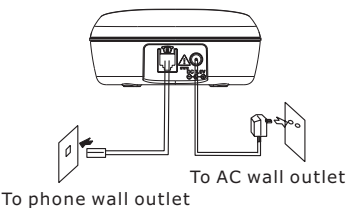


## LCD Window Icons Description



## Connecting Lines

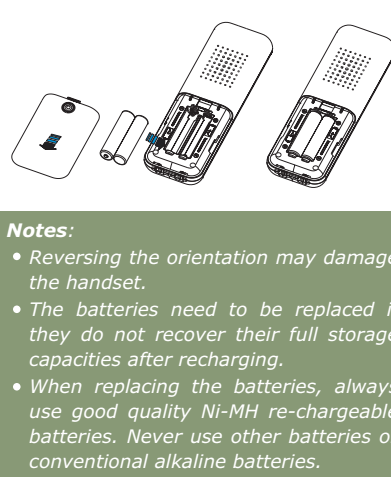
- Connect one end of the phone line cord to the phone line jack of the base, and the other end to a standard phone wall outlet.
- Connect the modular end of the AC power adapter to the power jack of the base, then plug the AC adapter into a standard AC wall outlet.



## Installing Batteries

The rechargeable Ni-MH batteries (AAA size, 1.2V, 600mAh) come with your phone. Install the batteries before use.

- Slide the battery cover in the direction of the arrow and pull it out.
- Insert new batteries as indicated, matching correct polarity (+,-).
- To replace the battery cover, slide the cover up until it snaps in place.



**Notes:**

- Reversing the orientation may damage the handset.
- The batteries need to be replaced if they do not recover their full storage capacities after recharging.
- When replacing the batteries, always use good quality Ni-MH re-chargeable batteries. Never use other batteries or conventional alkaline batteries.

## Charging Handset

**! Important Note:** Before initial operation, **YOU SHOULD FULLY CHARGE THE HANDSET** for about **15 hours**.

To charge the handset, you should place it on the base.

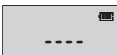
**Result:** When you place the handset on the base, the handset automatically turns on.



## Turning Handset On/Off

If the handset is in power off mode, when you place the handset on the base, it automatically turns on. To turn the handset on or off in standby mode, follow these steps:

- To turn on the handset when it's off, press and hold the **[ ]** key until you switch the display on. On power up, the handset will enter subscription mode and search for a registered base. A message as shown below will be displayed to the user, and the signal icon will flash.
- To turn off the handset, keep the **[ ]** key pressed until the display disappears.



**Note:**

- If no numbers are found, "EMPTY" is displayed.
- When the redial book is full, each time you dial a new number, the oldest number stored in the redial book is automatically erased.

## Basic Functions

All descriptions in this manual assume that the handset is in standby mode. Set the telephone to standby mode by pressing the **[ ]** key.

## Making a Call

- Pick up the handset and press the **[ ]** key.
- Dial a telephone number.
- To end the call, either press the **[ ]** key or replace the handset on the base.

**Note:**

- To make a call to the last number you dialed, use the **Redial** feature. For details, see par. **Last Number Redial**.

You can enter the desired phone number in standby mode, which allows you to make corrections before dialing. Follow these steps:

- Enter a telephone number (up to 32 digits). Check it. You can also use the **[ ]** key to insert a pause.

**Note:**

- If you make a mistake while entering a number, press the **[ ]** key to clear the last digit.

- When the number appears correctly, press the **[ ]** key.

## Receiving a Call

When a new call is received, the call information will appear.

If the caller can be identified, the caller's phone number is displayed.

- To answer the call, press the **[ ]** key. If you have activated the Auto Answer function, when the handset is on the base, simply lift it up to answer.
- To end the call, either press the **[ ]** key or replace the handset on the base.

**Notes:**

- You can select the ringer volume by using **[ ]** or **[ ]** key when the phone rings with an incoming call.
- If the polyphonic ring tone is set, the ring tone may continue for 4 seconds after the caller's hang-up or after the parallel phone had answered the call.

## Muting the Microphone

During a conversation, you can temporarily switch your phone's microphone off, so that the other party cannot hear you.

**Example:** You want to say something to another person in the room but do not want the other party to hear you.

To mute your microphone, press the **[ ]** key during the conversation. The "CALL MUTED" appears on the LCD.

To unmute the microphone, press the **[ ]** key again. You will restore the normal condition.

## Adjusting Audio Volume

During a conversation, you can use the **[ ]** or **[ ]** key to adjust the level of the earpiece (or the handsfree speakerphone one, if activated) volume from **VOL1** to **VOL5**. The selected volume will be displayed on the LCD.

You can also select the earpiece volume or the speaker volume by the **AUDIO SETUP** in Menu under **HS SETTING**, as described in par. **HS Settings**.

## Ringer Setting

You can select your own external (from the telephone Network) or internal (from other handsets registered to the same base) ring tone and adjust the volume.

- Press the **[ ]** key.
- Press **[ ]** or **[ ]** key repeatedly to choose **HS SETTING** menu, then press the **[ ]** key.
- Press **[ ]** or **[ ]** key to choose **RING SETUP**, and press the **[ ]** key.
- Use **[ ]** or **[ ]** key to choose **INT RING/EXT RING**, press the **[ ]** key.

5. Press **[ ]** or **[ ]** key to choose **MELODY** or **VOLUME**, press the **[ ]** key.

**Result:** You can select the ring tone from Melody 1 to 10 or adjust the volume from Volume 1 to 5, or off. When you adjust the ring tone or volume, the phone plays the selected melody or sounds the selected loudness.

- Press the **[ ]** key to confirm.

## Last Number Redial

- Press the **[ ]** key in standby mode.
- Press the **[ ]** key to dial out the number.

Your phone allows you to retrieve the last 10 numbers you have dialed and recall them quickly.

## Search for and dial a number in Redial Book

- Press the **[ ]** key in standby mode.
- If you want to scroll through the memory, press **[ ]** or **[ ]** key repeatedly until you find out the number you want to dial.
- Press the **[ ]** key to dial out the number.

**Notes:**

- If no numbers are found, "EMPTY" is displayed.
- When the redial book is full, each time you dial a new number, the oldest number stored in the redial book is automatically erased.

## CID Book

When you receive a call, if the caller's information is transmitted from the network on which the call was made (and the caller doesn't hide it), the caller's phone number is displayed. Moreover, if you missed one or more calls, the **[ ]** icon will appear on the LCD. If the CID memory is full, the **[ ]** icon will flash on the LCD.

**OUT OF AREA** - This message will display when someone calls from an area where the telephone company is not offering the caller identification services or is not yet providing number delivery to your area.

**PRIVATE** - If the caller has exercised the option to prevent his name and number from being sent, the message will show on the LCD.

## View and dial any of the CID numbers

- Press the **[ ]** key.
- Press the **[ ]** key again to choose the **CID BOOK**, and if available, the numbers are displayed. (You can also access the CID book directly by pressing the **[ ]** key in standby mode.)
- Use **[ ]** or **[ ]** key to view the numbers, you can make a call by a press of the **[ ]** key. You can also add the entry to the phonebook.

## Add CID Number to Phone Book

- Press the **[ ]** key.
- Press the **[ ]** key again to choose the **CID BOOK**, and if available, the numbers are displayed.
- Use **[ ]** or **[ ]** key to view the numbers. When the desired number displays on the LCD, press the **[ ]** key to enter **ADD TO PB** menu.

## Use Redial Book options

Using the redial book options, you can add a number to phone book or delete a number in the redial book.

- Press the **[ ]** key.
- Scroll to the desired number by using the **[ ]** or **[ ]** key.
- When the number appears on the display, press the **[ ]** key to choose the desired option:
  - ADD TO PB:** allows you to add the number to the phone book. Complete storing the entry by starting from step 4 described in par. "Adding the Phone Book Entries" (obviously, you will find the number already entered in the appropriate field).
  - DELETE:** allows you to delete the selected number.
  - DELETE ALL:** allows you to delete the whole redial book.
- To exit, press the **[ ]** key.

**Note:**

- At step 3, when you select **DELETE** or **DELETE ALL** options, a message "CONFIRM ?" will further ask you to confirm the deletion. To confirm press **[ ]** key, to escape press the **[ ]** key.

- Press the **[ ]** key, you are prompted to enter the name.
- Enter the name and press the **[ ]** key, then you can modify the number you want to store.
- Press the **[ ]** key, you are able to select the ring tone from Melody 1 to Melody 10, press the **[ ]** key to confirm and exit, you will hear a confirm beep.

## Delete a number in the CID Book

- Press the **[ ]** key.
- Press the **[ ]** key again to choose **CID BOOK**, and if available, the numbers are displayed.
- Scroll to the number you want to delete by using **[ ]** or **[ ]** key.
- When the desired number appears on the display, press the **[ ]** key.
- Use **[ ]** or **[ ]** key to choose **DELETE**, press the **[ ]** key. The display will show "CONFIRM ?". Press the **[ ]** key to confirm, you will hear a beep and the LCD shows the next number.

## Delete all numbers in the CID Book

- Press the **[ ]** key.
- Press the **[ ]** key again to choose **CID BOOK**, and if available, the numbers are displayed.
- Press the **[ ]** key and use **[ ]** or **[ ]** key to choose **DELETE ALL** menu, then press the **[ ]** key.
- The display shows "CONFIRM ?", press the **[ ]** key to confirm.

**Result:** You hear a beep and the phone returns to the standby mode after clearing all the CID numbers.

## Key Lock

If you turn on this feature, all keys will be locked. You can answer calls by using the **[ ]** key. But when you hang up, the phone returns to the locked mode. This feature is useful to avoid pressing keys by mistake.

To lock the keys, in the standby mode just keep the **[ ]** key pressed till the display shows "HS LOCKED" and the **[ ]** icon.

**Note:**

- In locked mode, if you press any key, the phone will generate a warning tone, and the "HS LOCKED" message will be redisplayed.

## Selecting a Language

The handset supports multiple predefined languages. You can change the language used to display the menu messages.

- Press the **[ ]** key.
- Press **[ ]** or **[ ]** key repeatedly to choose **HS SETTING**, press the **[ ]** key.
- Use **[ ]** or **[ ]** key to choose the **LANGUAGE**, then press the **[ ]** key.
- The languages will be displayed. Use **[ ]** or **[ ]** key to scroll through the options. Each language will be displayed in its own native translation.
- Press the **[ ]** key to select the required language and you will hear a confirm beep.

## HS Name

"HS N" is the default name of the handset after registration of handset. The handset number N= 1 to 5 reflects the handset is the Nth handset, which is registered to the base. The HS Label is displayed in the standby mode. You can modify it by the following steps:

- Press the **[ ]** key.
- Press **[ ]** or **[ ]** key repeatedly to choose **HS SETTING**, press the **[ ]** key.

2

3

4



■ Auto Answer

With this feature, you can answer a call by just picking up the handset from the base without pressing any key.

- Press the **[MNR]** key.
- Press **[A]** or **[D]** key repeatedly to choose **HS SETTING**, press the **[MNR]** key.

■ Paging

You can page the handset from the base unit making it ring with a special tone. It's useful to locate a lost handset.

Press the **[P]** key on the bottom of the base (less than 5 seconds), all the handsets registered to the base will ring for about 60 seconds.

■ Dial Mode

You can select to change the dial mode by the following steps:

- Press the **[MNR]** key.
- Press **[A]** or **[D]** key repeatedly to choose **BS SETTING**, and press the **[MNR]** key.
- Press the **[D]** key to choose the **DIAL MODE**, then press the **[MNR]** key.

■ Handsfree

During a call, you may turn on the speakerphone built in the handset. In this mode you can simply put your handset on a surface (e.g. a desk) and enjoy the comfort of the handsfree conversation.

To **turn the feature on**, press the **[F]** key during a call (line engaged). The **[P]** icon appears on the LCD.

■ Flash Signal

When the line is engaged, pressing the **[MNR]** key sends the Flash signal. This key is used in conjunction with special services (e.g. call waiting) which can be available in your phone network. For further details please contact your network telephone company.

Advanced Functions

■ Menu Map

- 1. CID BOOK**

**2. PHONE BOOK**  
ADD ENTRY  
CHANGE ENTRY  
DELETE ENTRY  
DELETE ALL  
PB STATUS

**3. BS SETTING**  
TERMINATE HS  
DIAL MODE  
FLASH TIME  
MODIFY PIN  
BS DEFAULT
- 4. HS SETTING**  
ALARM  
AUDIO SETUP  
RING SETUP  
TONE SETUP  
LANGUAGE  
HS LABEL  
AUTO ANSWER  
DATE & TIME  
SELECT BS  
HS DEFAULT

**5. REGISTER**

■ Phone Book

The phonebook built in your cordless phone allows you to store frequently used numbers so that you can easily make a call without having to remember or enter the phone number.

Character Map

To enter a specific alphanumeric character, press one or more times the relevant key for the required character according to the following table: once for the first character, twice for the second and so on.

Key	Characters in the displayed order				
0	(spc)	0	&	/	.
1	—	1	@	—	?
2	A	b	C	2	
3	d	E	F	3	
4	G	H	I	4	
5	J	K	L	5	
6	M	N	O	6	
7	P	q	R	S	7
8	T	U	V	8	
9	W	X	y	Z	9

Adding the Phone book Entries

- Press the **[MNR]** key.
- Press the **[D]** key to choose **PHONE BOOK**, press the **[MNR]** key.
- Press **[MNR]** key again to choose **ADD ENTRY**.
- The display shows "**NAME ?**". Enter the name you want to use, then press the **[MNR]** key to confirm. The display shows "**NUMBER ?**". Enter the desired number (up to 20 digits), press the **[MNR]** key.
- \*Use **[A]** or **[D]** key to select the ring you like to associate with the number, press the **[MNR]** key to confirm.

- Use **[A]** or **[D]** key to choose **AUTO ANSWER**, then press the **[MNR]** key.

- Use **[A]** or **[D]** key to choose **ON/OFF** to enable/ disable the function, then press the **[MNR]** key, you will hear a confirm beep.

To stop paging, press the **[P]** key on the base again or any key on the handset.

**Note:**  
• On a long **[P]** key press, more than or equal to 5 seconds, the base will enter subscription mode. For details, see par. **Registration**.

**Note:**  
• If you are not sure which dialing mode should be selected, please contact your local service provider.

**Notes:**  
• Before putting the handset near your ears, be sure you have turned the speakerphone off.  
• To adjust the speakerphone volume, see par. **Adjusting Audio Volume**.

To use the said special services, just press the **[MNR]** key while the line is engaged: the display will show **R**.

Viewing the Phone book Entries

- In the standby mode, press the **[D]** key.
- Press **[A]** or **[D]** key repeatedly until the desired name is displayed.
- Press the **[MNR]** key to show the relevant number.

Dialing a Number from Phone book

Find out the number you want to dial. Refer to "Viewing the Phone book Entries". Then press the **[F]** key to dial out the number.

Editing the Phone book Entries

- Press the **[MNR]** key.
- Press the **[D]** key to choose **PHONE BOOK**, press the **[MNR]** key.
- Press the **[D]** key to choose **CHANGE ENTRY** menu, press the **[MNR]** key.
- Press **[A]** or **[D]** key repeatedly until the entry you want to edit displays, press the **[MNR]** key to confirm.
- If necessary, press the **[CNR]** key to clear the digit(s) then enter the desired name and number, press the **[MNR]** key to save.

■ BS Settings

Terminate HS

This function allows you to delete a handset registration from the base.

- Press the **[MNR]** key.
- Press **[A]** or **[D]** key repeatedly to choose **BS SETTING** menu, then press the **[MNR]** key.
- Press the **[MNR]** key again to choose **TERMINATE HS**. The display shows "**PIN?**" to prompt you to enter the PIN Code (The default PIN Code is "0000"). Then press the **[MNR]** key.
- Use the **[A]** or **[D]** key to select a handset. If you select the current handset or a non-existent handset, a warning tone will be heard.
- Press the **[MNR]** key to confirm, and the selected handset will behave according to the unregistered condition.

Flash Time

You can select to change the Flash time by the following steps:

- Press the **[MNR]** key.
- Press **[A]** or **[D]** key repeatedly to choose **BS SETTING** menu, then press the **[MNR]** key.
- Use **[A]** or **[D]** key to choose the **FLASH TIME** menu. Press the **[MNR]** key.
- The display shows the current setting. Use the **[A]** or **[D]** key to select **SHORT/LONG**, press the **[MNR]** key.

Modify PIN

This function allows you to change the PIN number of the currently active Base. The default PIN is 0000.

■ HS Settings

Setting Alarm

You are able to set the alarm on the handset and adjust the alarm settings.

- Press the **[MNR]** key.
- Press **[A]** or **[D]** key repeatedly to choose **HS SETTING** menu, then press the **[MNR]** key.
- Press the **[MNR]** key again to choose **ALARM**.
- The display shows the current set. Use the **[A]** or **[D]** key to select **ON/OFF**, press the **[MNR]** key.
- If you select **ON**, the display indicates you to enter the time in **HH:MM** format.
- Press the **[MNR]** key, a beep sounds and the display shows **SNOOZE ON/OFF**, you can press **[A]** or **[D]** key to enable or disable the snooze function on the alarm and press the **[MNR]** key.
- When the alarm sounds, press any key to switch it off.

**Notes:**  
• At step 5 you need to enter the time in 24-Hour format.  
• If you press any key at the right time the alarm to ring, the alarm will be silent.  
• If you choose **SNOOZE ON**, the alarm will ring at regular intervals of 10 minutes.

Audio Setup

You can also use the menu to adjust the audio volume.

- Press the **[MNR]** key.

- Use **[A]** or **[D]** key to select the ring you like to associate with the number, press the **[MNR]** key to confirm.

Deleting the Phone book Entries

- Press the **[MNR]** key.
- Press the **[D]** key to choose **PHONE BOOK**, press the **[MNR]** key.
- Press **[A]** or **[D]** key to choose **DELETE ENTRY**. Press the **[MNR]** key.
- Press **[A]** or **[D]** key repeatedly until the name you want to delete displays, then press the **[MNR]** key. The display shows "**CONFIRM ?**". You can press the **[MNR]** key to delete it or press the **[CNR]** key to exit.
- At step 3, if you choose **DELETE ALL** menu and press the **[MNR]** key, the display will show "**CONFIRM ?**". You can press the **[MNR]** key to delete all the entries or press the **[CNR]** key to exit.

PB Status

The PB Status shows the number of phone book entries already stored. When the **PB STATUS** shows on the LCD, press the **[MNR]** key to enter it.

- Press the **[MNR]** key.

- Press **[A]** or **[D]** key repeatedly to choose **BS SETTING** menu, then press the **[MNR]** key.

- Use **[A]** or **[D]** key to choose **MODIFY PIN** menu, press the **[MNR]** key.
- The display shows "**PIN?**" to prompt you to enter the old PIN. Enter it then press **[MNR]** key. If the old PIN code is correct, you will be prompted to enter a new PIN code, otherwise a warning beep will sound and the handset will return to **MODIFY PIN** menu.

- Enter the new PIN, press the **[MNR]** key. You will be requested to confirm the PIN code. Enter the new PIN again then press the **[MNR]** key to confirm and exit.

BS Reset

This function allows you to reset the Base setting to the factory default.

- Press the **[MNR]** key.
- Press **[A]** or **[D]** key repeatedly to choose **BS SETTING** menu, then press the **[MNR]** key.
- Press **[A]** or **[D]** key to choose **BS DEFAULT**, press the **[MNR]** key. You will be prompted to enter the PIN code.
- Enter the PIN code (the default PIN is 0000), then press the **[MNR]** key. If the PIN code is correct all base settings will be returned to the factory default, otherwise the settings will remain.

**Result:** After resetting, the handset will return to standby mode.

Setting Date & Time

1. Date Format

- Press the **[MNR]** key.
- Press **[A]** or **[D]** key repeatedly to choose **HS SETTING** menu, then press the **[MNR]** key.
- Press **[A]** or **[D]** key to choose **DATE & TIME**, press the **[MNR]** key.
- Press the **[MNR]** key to choose **DATE FORM**.
- You can use **[A]** or **[D]** key to choose the Date format (**DD-MM/MM-DD**), press the **[MNR]** key to save.

2. Setting date & time

- Press the **[MNR]** key.
- Press **[A]** or **[D]** key repeatedly to choose **HS SETTING** menu, then press the **[MNR]** key.
- Press **[A]** or **[D]** key to choose **DATE & TIME**, press the **[MNR]** key.
- Press **[A]** or **[D]** key to choose **SET DATE** or **SET TIME** menu, press the **[MNR]** key.
- Enter the current date or time by numeric keypad and press the **[MNR]** key to save and exit.

**Note:**  
• At step 5 you need to enter the time in 24-Hour format.

Selecting a Base

This function allows you to select a base from those already registered to the handset. You can access the options by scrolling the menu.

■ Registration

The supplied handset is already registered with the number 1. You can register up to 5 handsets to the same base in order to share the same line with other people.

Before registering a handset to the base, you should press and hold the **[P]** key on the bottom of the base for about 5 seconds then release it.

- Press the **[MNR]** key.
- Press **[A]** or **[D]** key repeatedly to choose **REGISTER**, then press the **[MNR]** key.
- Use **[A]** or **[D]** key to scroll through the Base names list, press the **[MNR]** key to choose a base to your necessary. The handset will search for the requested base and the relevant information will flash on the LCD.

■ Calling with more than one Handset

If you have more than one handset registered to the same base, you can make internal calls and transfer an external call between the registered handsets.

Making an internal call

- Press the **[F]** key, the LCD displays as follows, then enter the number of the handset you want to call.  

1 2 3 4 5
- If the handset entered is valid, the called handset will ring and display **HSX CALLING**. The handset user can press the **[F]** key to answer the internal call.
- At the end of your conversation, press the **[R]** key.

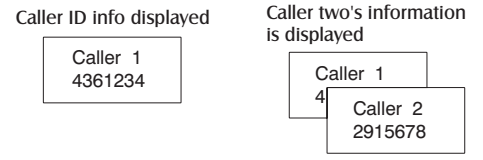
**Note:**  
• During the internal call, if an external call comes in, the LCD will show the caller's number. You should press the **[F]** key to end the internal call first then press the **[F]** key to answer the call.

Call transfer between handsets

You can transfer an external call between the handsets those are registered to the same base.

■ Caller ID on call waiting

When you subscribe to Call Waiting service from your local telephone company, the telephone will display the name and number of the second caller while you are having a conversation.



- When you are on the line, the telephone will automatically display the name and number of the second caller.

- Press the **[MNR]** key.
- Press **[A]** or **[D]** key repeatedly to choose **HS SETTING** menu, then press the **[MNR]** key.
- Press **[A]** or **[D]** key to choose the **SELECT BS**, press the **[MNR]** key.
- You can use **[A]** or **[D]** key to select the base you want, then press the **[MNR]** key. If you select a non-existent base, the handset will sound a warning tone.
- The display will show **SELECT BS X**. Press the **[MNR]** key to confirm. A confirm tone will be heard.

HS Reset

This function allows you to reset the handset settings to the factory default.

- Press the **[MNR]** key.
- Press **[A]** or **[D]** key repeatedly to choose **HS SETTING** menu, then press the **[MNR]** key.
- Press **[A]** or **[D]** key to choose the **HS DEFAULT** menu, press the **[MNR]** key. You will be prompted to enter the PIN code.

- Enter the PIN code (the default one is 0000), then press the **[MNR]** key. If the PIN code is validated all handset settings will return to the factory default, otherwise a warning tone will be heard and the settings will remain.

**Result:** After resetting, the handset will return to standby mode.

- If the base is found, you will be prompted to enter the PIN code (the default one is 0000). Enter it then press the **[MNR]** key. If the PIN code is correct, the Registration tone will sound and then the base assigns a number to the handset, otherwise a warning tone will sound, and then the handset returns to the previous registration state.

- If the base is not found, the handset will behave according to the Out of Range condition.

Feature List

- **1.8GHz DECT technology with GAP**
- **Up to 5 handsets for optional for one base**
- **Up to 4 bases for optional for one handset**
- **Phonebook with up to 50 entries**
- **9 VIP ring tones setting for phonebook entries**
- **Redial book with up to 10 entries**
- **10 ring tones and volume selectable (5 levels+off)**
- **Key tone ON/OFF selectable**
- **Full handsfree speakerphone**
- **Internal call**
- **Call transfer**
- **3-way conference call**
- **Receiver/Speaker volume adjustable (5 levels)**
- **Mute**
- **PIN protection**
- **Redialing**
- **Redial, Flash, Pause**
- **TONE/PULSE dialing mode selectable**
- **FLASH time selectable**
- **Call duration display**
- **Real time clock (set time)**
- **Keypad lock**
- **13 languages selectable**
- **Auto answer ON/OFF selectable**
- **Alarm clock include snooze option**
- **Handset Name setting**
- **LCD backlight**
- **Low radiation (optional)**

**Caller ID**  
• **FSK and DTMF dual system Caller ID**  
• **Caller ID / Call Waiting**  
• **Caller ID list with up to 40 entries**  
• **Incoming calls can be called back/added to phonebook/deleted**

Troubleshooting

Symptom	Check & Remedy
No operation	• Check that the power adapter is properly connected. • Check that the telephone line cord is properly connected. • Check that the handset batteries in full power. • Check that the handset batteries are installed properly.
No dial tone	• Check that the telephone line cord is properly connected. • Check that the power adapter is properly connected.
Nothing appears on the display	• Check that the handset batteries are installed properly. • Check that the handset batteries in full power. • Check that the handset is on.
Handset seems to have very short battery life	• Check the charge contacts. • Consistently short battery life may indicate that replacement of the batteries is necessary. • Make sure the right batteries be used.
Caller's number is not displayed	• Make sure you have subscribed to a Caller ID service via your network provider. • The caller may have withheld their details. • Let the phone ring a couple of times as there may be a delay in receiving the Caller ID information.

Technical Specifications

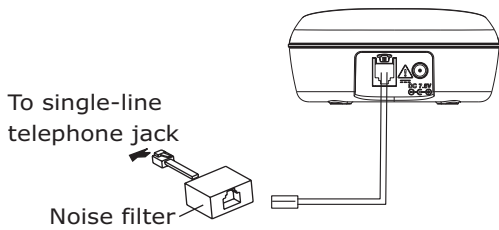
Frequency Range	1.88~1.90GHz
Channels	120 Duplex channels
Carrier Power	<250mW
Modulation	GFSK
Frequency Stability	< ± 50 KHz
Charging time	15 hours
Ambient temperature	Normal: 15℃ ~ 35℃, Extreme: 0℃ ~ 40℃
Humidity	0%~90%
Dimensions (mm)	Base: 111 x 91 x 51; Handset: 147 x 48 x 23
Power Supply	Base input: 7.5V, 300mA; Handset input: NI-MH 1.2V x 2, 600mAh

✍ Design and specifications are subject to change without notice.

⚠ If you subscribe to a DSL service

Please attach a noise filter (contact your DSL provider) to the telephone line between the base unit and the telephone line jack in the event of the following:

- Noise is heard during conversations.
- Caller ID features do not function properly.



**Note:**  
• If one of the handsets drops the conference call, the remaining handsets will continue the conference.

- Press the **[MNR]** key to answer the second caller.

- When you have finished, press the **[MNR]** key to continue with your conversation with the first caller.

**Note:**  
• If you have transferred an external call to another handset, you cannot use the call waiting function via the second handset.