



## ●Characteristics

Parameter	Symbol	Typical	Unit
Effective printing width	—	80	mm
Dot pitch	—	0.125	mm
Total dot number	—	640	dots
Average resistance value	Rave	550	Ω
Applied voltage	V <sub>H</sub>	24	V
Applied power	P <sub>o</sub>	0.899	W / dot
Print cycle	SLT	0.98	ms
Pulse width	T <sub>ON</sub>	0.267	ms
Maximum number of dots energized simultaneously	—	448	dots
Maximum clock frequency	—	10	MHz
Maximum roller diameter	—	20	mm
Running life / pulse life	—	50 / 10 <sup>8</sup>	km / pulses
Operating temperature	—	5~45	°C

## ●Pin assignments

### HIROSE

No.	Circuit	No.	Circuit
1	V <sub>DD</sub>	2	BEO
3	GND	4	DI2
5	N.C.	6	CLK
7	LA	8	GND
9	GND	10	DI1
11	N.C.	12	GND
13	V <sub>DD</sub>	14	STB2
15	STB1	16	TM
17	TM	18	SENS1
19	SENS2	20	SENS3

### JST

No.	Circuit
1	VH
2	VH
3	VH
4	GND
5	GND
6	GND

## ●Timing chart

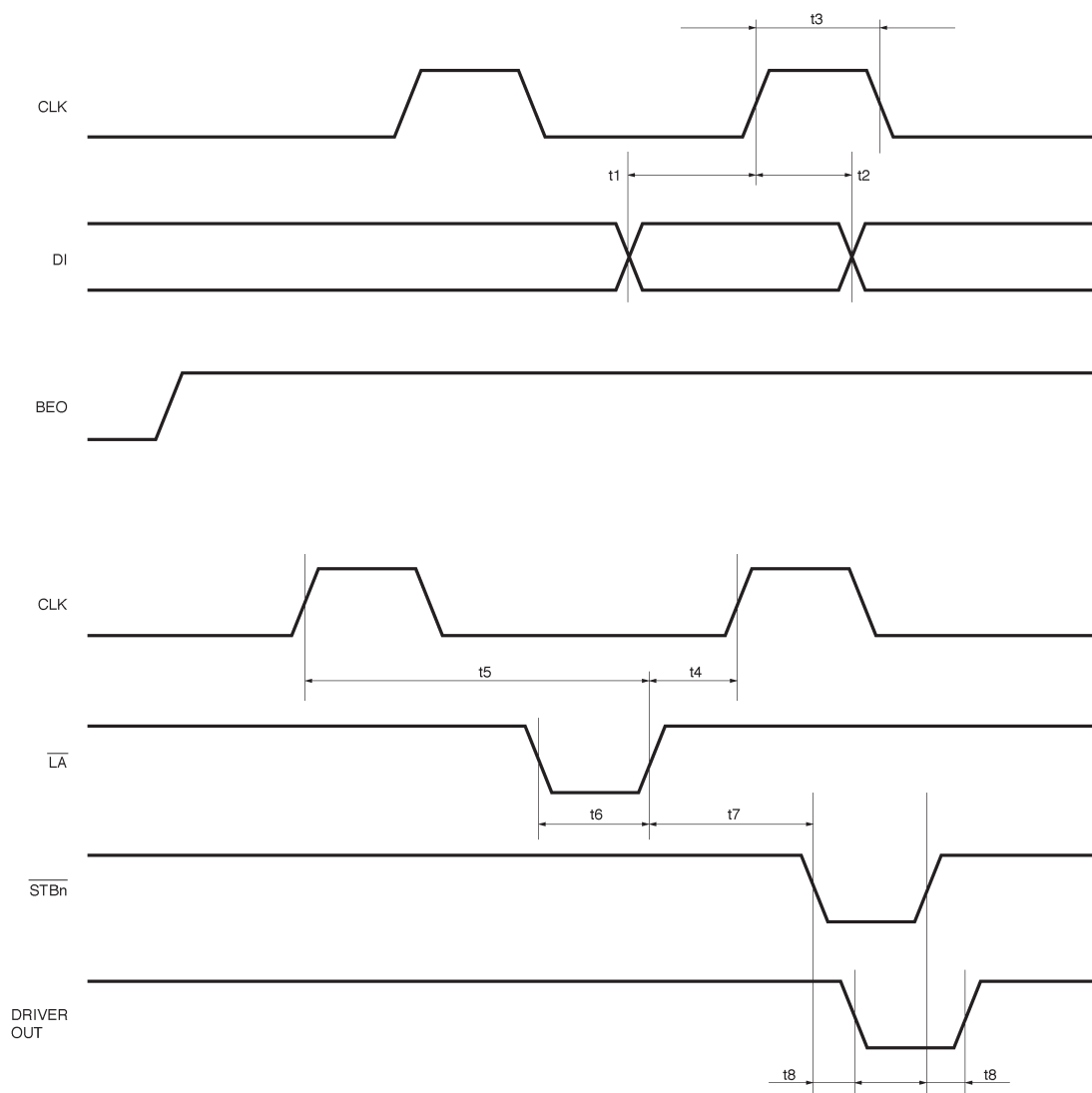
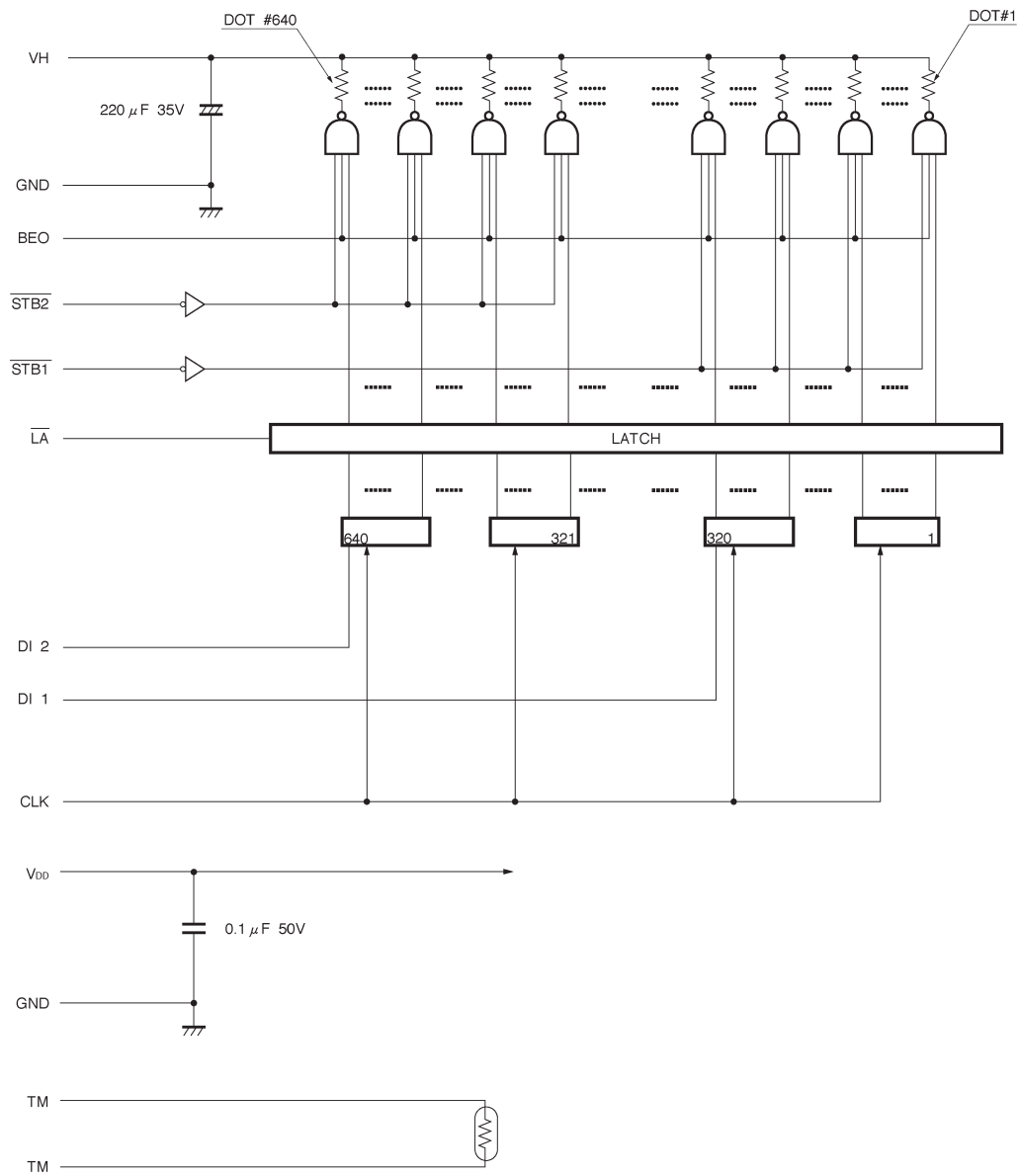


Fig.1

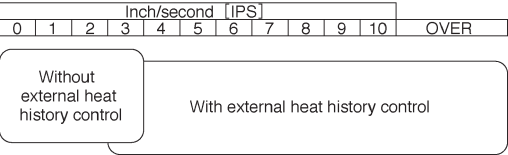
●Equivalent circuit



DI No.	DOT No.	STB No.	DOT No.
DI 2	640~321	STB 2	640~321
DI 1	320~ 1	STB 1	320~ 1

Fig. 2

●Supported speeds chart



●Electrical characteristic curves

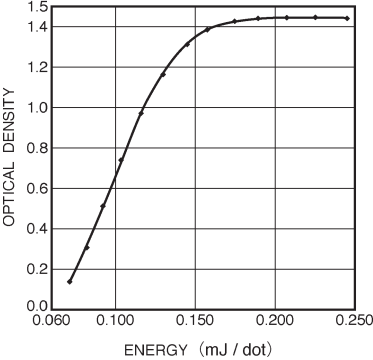


Fig. 3 Representative density curve

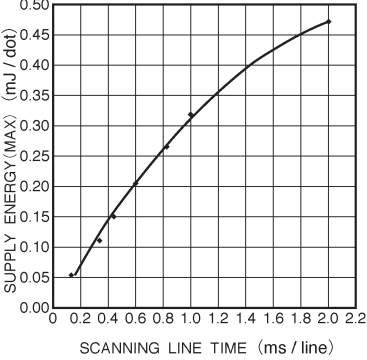


Fig. 4 Maximum energy curve

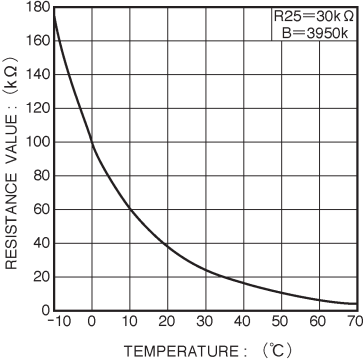


Fig. 5 Thermistor curve