

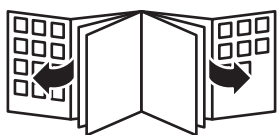
Register your product and get support at / 请登录以下网址并得到相应的帮助

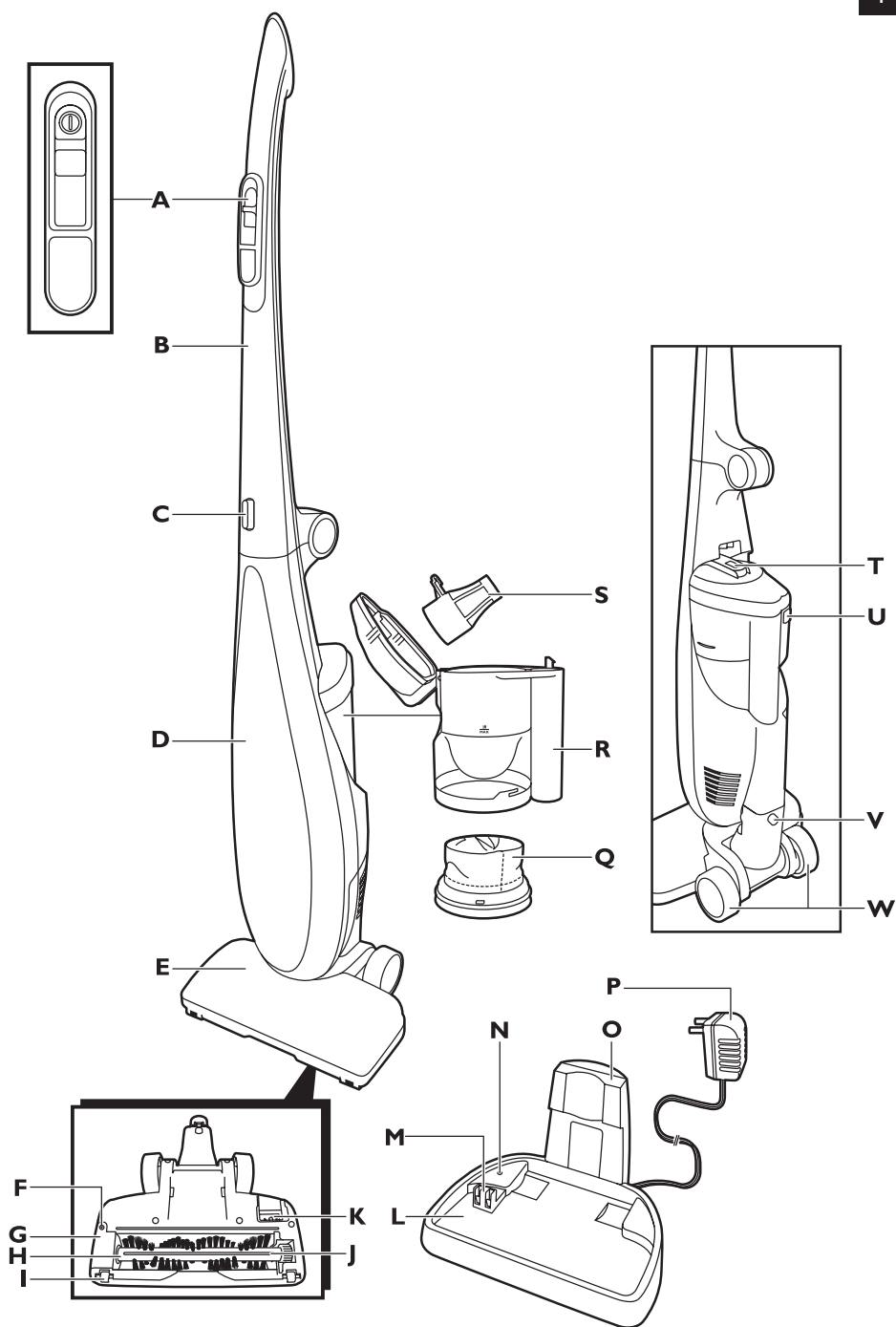
www.philips.com/welcome

FC6151



PHILIPS





Introduction

Congratulations on your purchase and welcome to Philips! To fully benefit from the support that Philips offers, register your product at www.philips.com/welcome.

General description (Fig. 1)

- A** On/off slide
- B** Upper stick part
- C** Button to collapse upper stick
- D** Lower stick part
- E** Floor nozzle
- F** Retainer screw
- G** Retainer
- H** Roller brush
- I** Front wheels
- J** Cutting groove
- K** Contact strips
- L** Charging base
- M** Contact strips
- N** Charging light
- O** Back support charging base
- P** Adapter
- Q** Cloth filter
- R** Dust bucket
- S** Cone filter
- T** Dust bucket release button
- U** Dust bucket lid release button
- V** Floor nozzle release button
- W** Rear wheels

Important

Read this user manual carefully before you use the appliance and save it for future reference.

Danger

- Never suck up water or any other liquid. Never suck up flammable substances and do not suck up ashes until they are cold.
- Never immerse the appliance or the charging base in water or any other liquid, nor rinse it under the tap.

Warning

- Check if the voltage indicated on the adapter corresponds to the local mains voltage before you connect the appliance.
- Do not use the appliance if the adapter, the charging base or the appliance itself is damaged.
- If the adapter or charging base is damaged, always have it replaced with one of the original type in order to avoid a hazard.
- The mains cord of the adapter cannot be replaced. If the mains cord of the adapter is damaged, the adapter must be discarded.
- The adapter contains a transformer. Do not cut off the adapter to replace it with another plug, as this causes a hazardous situation.
- This appliance is not intended for use by persons (including children) with reduced physical, sensory or mental capabilities, or lack of experience and knowledge, unless they have been given supervision or instruction concerning use of the appliance by a person responsible for their safety.

- Children should be supervised to ensure that they do not play with the appliance.
- Do not put your hand or fingers near the joint between the upper and lower stick part to prevent injury when you fold upper stick part down or out.

Caution

- Remove the adapter from the wall socket before you clean the charging base.
- Only charge the appliance with the charging base supplied. During charging, the adapter feels warm to the touch. This is normal.
- Always switch off the appliance after use.
- The voltage on the contact strips in the charging base is low and therefore not dangerous.
- Do not attempt to replace the rechargeable batteries yourself. If you experience problems recharging the batteries, take the appliance to your dealer or a service centre authorised by Philips for examination.
- When you use the appliance to vacuum ashes, fine sand, lime, cement dust and similar substances, the pores of the filters become clogged. If you notice a strong decrease in suction power, clean the filters.
- Only use the Philips filters supplied with the appliance.
- Switch off the appliance when you charge it.
- Never block the exhaust openings during vacuuming.
- Always use the vacuum cleaner with the filter unit assembled.

Electromagnetic fields (EMF)

This Philips appliance complies with all standards regarding electromagnetic fields (EMF). If handled properly and according to the instructions in this user manual, the appliance is safe to use based on scientific evidence available today.

Before first use

- 1 Remove any protective foil or plastic from the appliance.
- 2 Fold out the upper stick part to a vertical position ('click').
- 3 Place the stick on the floor nozzle ('click') (Fig. 2).

Preparing for use

Charging the appliance

Charge the appliance for at least 16 hours before you use it for the first time.

It takes approx. 16 hours to fully charge the appliance.

The operating time of the appliance is 20 minutes.

- 1 Put the adapter of the charging base in the wall socket.
- 2 Place the appliance on the charging base (Fig. 3).

Note: Make sure the appliance is switched off when you place it on the charging base, otherwise the appliance will run until it is out of power and the appliance will not charge until you turn the switch to the off-position.

- The charging light goes on to indicate that the appliance is charging. (Fig. 4)

Note: The charging light gives no indication of the battery charge level of the appliance.

Note: You can leave the appliance on the plugged-in charging base if you use it daily. If you do not use it daily, unplug the charging base after charging.

Note: You can leave the appliance on the charging base, even when it is fully charged.

Saving energy

If you are not going to use the appliance for a longer period of time, remove the adapter from the wall socket to save energy.

How to optimise the lifetime of the batteries

- Do not use the appliance when its batteries are almost empty. Recharge the appliance before you use it again. Completely draining the batteries is harmful to the batteries and reduces their life.
- Always disconnect the appliance from the mains if you are not going to use it for a month or longer.
- Always recharge the appliance after a long period of disuse.
- If you do not use the appliance daily, unplug it after charging.
- If you cannot recharge the batteries anymore, take the appliance to your dealer or a Philips service centre to have them replaced.

Using the appliance

Note: Always make sure the dust bucket is correctly inserted into the appliance to prevent damage to the appliance.

- 1** Push the on/off slide to 'ON' to switch on the appliance (Fig. 5).
- 2** If you want to leave the appliance for a while, use the parking position. Push the stick towards the floor nozzle to lock the stick in parking position. (Fig. 6)
- 3** After use, push the on/off slide to 'OFF' to switch off the appliance.

Cleaning

Always remove the adapter from the wall socket before you clean the charging base.

- 1** Clean the outside of the appliance and the outside of the charging base with a damp cloth.
- 2** If you want to empty and clean the dust bucket and clean the filters, follow the instructions in sections 'Emptying and cleaning the dust bucket' and 'Cleaning the filters' below.

Emptying and cleaning the dust bucket

Make sure you empty and clean the dust bucket regularly.

Note: Empty the dust bucket when you notice a decrease in suction power or when the dust in the bucket reaches the 'Max' indication (Fig. 7).

- 1** Press the dust bucket release button (1) and remove the dust bucket (2) (Fig. 8).
- 2** Press the dust bucket lid release button (1) and open the lid (2) (Fig. 9).
- 3** Shake the dust bucket with your free hand to empty the contents into a dustbin (Fig. 10).
- 4** If necessary, clean the dust bucket with a damp cloth.
- 5** If necessary, clean the filters. See section 'Cleaning the filters' below.
- 6** Close the dust bucket lid.
- 7** Place the dust bucket back into the appliance ('click') (Fig. 11).

Cleaning the filters

Make sure you clean the filters regularly.

Cleaning the cone filter

- 1** Press the dust bucket release button (1) and remove the dust bucket (2). (Fig. 8)
- 2** Press the dust bucket lid release button (1) and open the lid (2) (Fig. 12).
- 3** Turn the cone filter in the lid to the left (1) and remove the cone filter from the dust bucket (2) (Fig. 13).
- 4** To clean the cone filter, tap it gently against the side of a dustbin.
- 5** Clean the cone filter with a brush if it is very dirty.

Note: If necessary, you can clean the cone filter in cold or lukewarm water. Make sure the cone filter is dry before you put it back in the dust bucket lid.

- 6** Place the cone filter back in the dust bucket lid and turn it to the right to fix it (Fig. 14).

Note: Make sure you insert the cone filter in the correct way.

- 7** Close the dust bucket lid.
- 8** Place the dust bucket back in the appliance ('click') (Fig. 11).

Cleaning the cloth filter

- 1** Press the dust bucket release button (1) and remove the dust bucket (2). (Fig. 8)
- 2** Turn the cloth filter at the base of the dust bucket to the left and remove the cloth filter from the dust bucket (Fig. 15).
- 3** Shake the cloth filter over a dustbin to clean it.
- 4** Clean the filter with a brush if it is very dirty.

Note: If necessary, you can clean the cloth filter in cold or lukewarm water. Make sure the cloth filter is dry before you reattach it to the dust bucket.

- 5** Reattach the cloth filter to the dust bucket and turn it to the right to fix it (Fig. 16).

Note: Make sure you reattach the cloth filter in the correct way.

- 6** Place the dust bucket back in the appliance ('click').

Cleaning the floor nozzle joint

The floor nozzle joint may get blocked by large dirt particles. Follow the steps below to clean the joint.

- 1** Switch off the appliance.
- 2** Press the floor nozzle release button (1) to detach the floor nozzle from the stick (2). (Fig. 17)
- 3** Remove the large dirt particles from the joint.
- 4** Place the stick back onto the floor nozzle ('click') (Fig. 2).

Cleaning the roller brush

If you find something trapped on the roller brush, you can follow the steps below to clean the roller brush.

- 1** Switch off the appliance.
- 2** Press the floor nozzle release button (1) to detach the stick from the floor nozzle (2) (Fig. 17).
- 3** Turn the floor nozzle upside down.
- 4** Rotate the roller brush until the cutting groove faces you.
- 5** Use a pair of scissors to cut the hairs, threads etc. that have collected around the roller brush. (Fig. 18)
- 6** Remove fluff, hairs and other dirt from the roller brush.

Note: You can also remove the roller brush for easier cleaning.

Removing the roller brush

- 1** Switch off the appliance.
- 2** Press the floor nozzle release button (1) to detach the stick from the floor nozzle (2) (Fig. 17).
- 3** Turn the floor nozzle upside down.
- 4** Unscrew the roller brush retainer (Fig. 19).
- 5** Lift the roller brush out of the floor nozzle right side first and remove the drive belt from the left-hand end of the roller brush (Fig. 20).
- 6** Remove fluff, hairs and other dirt from the roller brush and from the roller brush cavity.

Reinserting the roller brush

- 1** Slide the drive belt onto the left -hand end of the roller brush and insert this end of the roller brush into the floor nozzle first. Then put the rest of the roller brush back into the floor nozzle. (Fig. 21)
- 2** Place the retainer back onto the floor nozzle and tighten the screws. (Fig. 22)

Note: You cannot reattach the retainer if the roller brush is not inserted properly.

Storage

- 1** Push the stick towards the floor nozzle to lock it in parking position (Fig. 6).
- 2** You can store the appliance on the charging base. (Fig. 3)
- 3** To store the appliance under furniture, fold down the upper stick part to make the appliance shorter.

Environment

- Do not throw away the appliance with the normal household waste at the end of its life, but hand it in at an official collection point for recycling. By doing this, you help to preserve the environment (Fig. 23).
- The built-in rechargeable batteries contain substances that may pollute the environment. Remove the batteries when you discard the appliance. Do not throw away the batteries with the normal household waste, but hand them in at an official collection point. You can also take the appliance to a Philips service centre. The staff of this centre will remove the batteries for you and will dispose of them in an environmentally safe way (Fig. 24).

Removing the rechargeable batteries

NiMH batteries may explode when exposed to high temperatures or fire.

Only remove the rechargeable batteries if they are completely empty.

You can remove the rechargeable batteries in the following way.

- 1** Let the appliance operate until it stops.
- 2** Remove the panel with the exhaust air openings from the stick with a screwdriver.
- 3** Undo the screws on the side of the stick. (Fig. 25)
- 4** Remove the cover.
- 5** Disconnect the connector to separate the batteries from the stick (Fig. 26).
- 6** Remove the rechargeable batteries (Fig. 27).

Guarantee and service

If you need service or information or if you have a problem, please visit the Philips website at **www.philips.com** or contact the Philips Consumer Care Centre in your country (you find its phone number in the worldwide guarantee leaflet). If there is no Consumer Care Centre in your country, go to your local Philips dealer.

Troubleshooting

This chapter summarises the most common problems you could encounter with your appliance. Please read the different sections for more details. If you are unable to solve the problem, please contact the Philips Consumer Care Centre in your country.

Problem	Solution
The appliance does not work.	The batteries may be low. Recharge the batteries.
	Take the appliance to your dealer or a service centre authorised by Philips for examination.
The appliance does not charge.	Place the appliance on the charging base properly. The charging light goes on to indicate that the appliance is charging.
	Put the adapter in the wall socket properly. The charging light goes on to indicate that the appliance is charging.
The appliance does not vacuum properly.	The dust bucket may not be correctly placed in the appliance. Place the dust bucket in the appliance correctly.

Problem	Solution
	The dust bucket may be full. Empty the dust bucket.
	The filters may be clogged. Clean the cone filter and the cloth filter(see chapter 'Cleaning').
	The floor nozzle joint may be blocked by large dirt particles. Clean the floor nozzle joint (see chapter 'Cleaning').
Dust escapes from the appliance.	The dust bucket may be full. Empty the dust bucket.
	The dust bucket may not be correctly placed in the appliance. Place the dust bucket correctly in the appliance.
	Perhaps the filters are not correctly placed. Place the cone filter in the dust bucket lid correctly and reattach the cloth filter to the bottom of the dust bucket correctly.
The appliance produces a lot of noise.	There are solid parts inside the dust bucket. Empty the dust bucket and clean the filters (see chapter 'Cleaning').
	The floor nozzle joint may be blocked by large dirt particles. Clean the floor nozzle joint (see chapter 'Cleaning').
The appliance does not pick up dirt effectively.	The roller brush is clogged. Clean the roller brush (see chapter 'Cleaning').

简介

感谢您的惠顾，欢迎光临飞利浦！为了您能充分享受飞利浦提供的支持，请在 www.philips.com/welcome 上注册您的产品。

一般说明 (图 1)

- A** 开/关滑钮
- B** 把杆上半部分
- C** 折叠把杆上半部分的按钮
- D** 把杆下半部分
- E** 吸嘴
- F** 固定器螺钉
- G** 固定器
- H** 滚刷
- I** 前轮
- J** 切割沟槽
- K** 触点
- L** 充电座
- M** 触点
- N** 充电指示灯
- O** 充电座靠背
- P** 适配器
- Q** 滤布
- R** 集尘桶
- S** 锥形滤网
- T** 集尘桶释放钮
- U** 集尘桶盖拆卸按钮
- V** 吸嘴拆卸按钮
- W** 后轮

注意事项

使用本产品之前，请仔细阅读本使用说明书，并妥善保管以备日后参考。

危险

- 切勿吸入水或其它液体。切勿吸入易燃物质，也不要吸入未冷却的灰烬。
- 切勿将本产品或充电座浸入水或其它任何液体，也不能在自来水龙头下冲洗。

警告

- 在将本产品连接电源前，务必检查当地的电压是否与电源适配器所标电压一致。
- 如果适配器、充电座或产品本身损坏，请勿使用本产品。
- 电源软线不能更换，如果软线损坏，此器具(电源适配器)应废弃。
- 如果适配器或充电座损坏，必须用原装型号更换，以免发生危险。
- 电源适配器内含有一个变压器。切勿自行更换插头，否则将导致严重后果。
- 本产品不打算由肢体不健全、感觉或精神上有障碍或缺乏相关经验和知识的人（包括儿童）使用，除非有负责他们安全的人对他们使用本产品进行监督或指导。
- 应照顾好儿童，确保他们不玩耍本产品。
- 切勿将手或手指接近把杆上半部分和下半部分之间的接合点，以防在折叠或展开把杆上半部分时受伤。

注意

- 清洁充电座之前，务必将适配器从墙上的电源插座中拔出。
- 只能用本产品随附的充电座为产品充电。充电期间，适配器会有微热，这是正常现象。
- 使用后，务必关闭产品电源。
- 充电座接触片上的电压为低电压，因此没有危险。

14 简体中文

- 切勿擅自更换电池。如果电池充电时遇到问题，请将产品送往经销商处或飞利浦授权的服务中心进行检查。
- 在使用本品吸收灰尘、细沙、石灰、水泥灰和类似的物质时，滤网将被堵塞。如果您注意到吸力显著下降，则可以清洁滤网。
- 只能使用本产品随附的飞利浦滤网。
- 充电前请关闭产品。
- 吸尘时切勿阻塞排气口。
- 使用吸尘器时，请确保装上过滤部件。

电磁场 (EMF)

这款飞利浦产品符合关于电磁场 (EMF) 的相关标准。据目前的科学证明，如果正确使用并按照本用户手册中的说明进行操作，本产品是安全的。

首次使用之前

- 1 撕掉产品上的保护膜或塑料保护罩。
- 2 将把杆上半部分展开到垂直位置（可听到“咔哒”一声）。
- 3 将握柄卡入吸嘴（可听到“咔哒”一声）。(图 2)

使用准备

为产品充电

在第一次使用前，要给本产品充至少 16 个小时的电。

本产品充满电大约需要 16 小时。

本产品工作时间为 20 分钟。

- 1 将充电座的适配器插入电源插座。
- 2 将产品插接到充电座。(图 3)

注意：请确保在将产品插接到充电座前关闭产品，否则产品将持续工作到电量耗尽，而且只有将开关旋至关闭位置时产品才会充电。

● 充电指示灯亮起，表示吸尘器正在充电。(图 4)

注意：充电指示灯不会显示本产品电池的充电量。

注意：如果您每天使用本产品，可以将本产品放置在插电的充电座上。如果您无需每天使用，请在充电后拔出充电座。

注意：您可以将产品留在充电座中，即使产品已完全充电。

节约能源

如果在较长一段时间内不再使用本产品，请将适配器从插座中拔下，以节约能源。

如何优化电池寿命

- 当电池即将耗尽时，请勿使用本产品。再次使用前请重新为本产品充电。完全耗尽电池电量有损电池，会缩短电池寿命。
- 如果您打算一个月或以上不使用本产品，请务必断开产品的电源。
- 长时间未使用本产品后，请务必为产品充电。
- 如果您不是每天使用本产品，请在充电后拔出产品。
- 如果您无法再为电池充电，请将本产品送往经销商处或飞利浦服务中心进行更换。

使用本产品

注意：始终确保将集尘桶正确插入本产品，以防止对本产品造成损坏。

- 1 将开/关按钮设置为“ON (开)”以打开本产品。(图 5)

- 2 如果您想一段时间不使用本产品，请使用固定位置。将把杆推入地板吸嘴，使把杆锁定在固定位置。（图 6）
- 3 使用后将开/关滑钮推到“OFF（关）”，以关闭本产品。

清洁

清洁充电座之前，将适配器从墙上的电源插座中拔出。

- 1 请使用湿布清洁本产品外部和充电座外部。
- 2 如果您想倒空并清洁集尘桶以及清洁滤网，请遵照下文“倒空并清洁集尘桶”和“清洁滤网”部分的说明。

倒空并清洁集尘桶

确保定期倒空并清洁集尘桶。

注意：当您发现吸力下降或桶内灰尘达到“Max（满）”指示时，请倒空集尘桶。（图 7）

- 1 按集尘桶拆卸按钮 (1) 并拆卸集尘桶 (2)。（图 8）
- 2 按集尘桶盖拆卸按钮 (1) 并打开盖子 (2)。（图 9）
- 3 用另一只手抖动集尘桶，将尘垢倒入垃圾桶。（图 10）
- 4 如有必要，可用湿布清洁集尘桶。
- 5 如有必要，可清洁滤网。请参阅下文的“清洁滤网”部分。
- 6 合上集尘桶盖。
- 7 将集成桶放入本产品内（可听到“咔哒”一声）。（图 11）

清洁滤网

确保定期清洁滤网。

锥形滤网

- 1 按集尘桶拆卸按钮 (1) 并拆卸集尘桶 (2)。（图 8）
- 2 按集尘桶盖拆卸按钮 (1) 并打开盖子 (2)。（图 12）
- 3 将桶盖内的锥形滤网旋至左侧 (1) 并从集尘桶拆卸锥形滤网 (2)。（图 13）
- 4 要清洁锥形滤网，可以将滤网在垃圾箱的一侧轻敲。
- 5 如果锥形滤网很脏，请使用刷子清洁。

注意：如有必要，您可以用冷水或微温的水清洁滤网。重新将锥形滤网装入集尘桶盖之前，请确保锥形滤网干燥。

- 6 将锥形滤网放回集尘桶盖并朝右旋转，将其固定。（图 14）

注意：确保正确插入锥形滤网。

- 7 合上集尘桶盖。
- 8 将集成桶放入本产品内（可听到“咔哒”一声）。（图 11）

清洁滤布

- 1 按集尘桶拆卸按钮 (1) 并拆卸集尘桶 (2)。（图 8）
- 2 将集尘桶底部的滤布向左旋转，然后从集尘桶拆卸滤布。（图 15）
- 3 在垃圾箱上方将滤布甩净。

4 如果滤布很脏，请使用刷子清洁。

注意：如有必要，您可以用冷水或微温的水进行清洁。重新将滤布装入集尘桶前，请确保滤布干燥。

5 重新将滤布安装到集尘桶并向右旋转，将其固定。(图 16)

注意：确保正确安装滤布。

6 将集尘桶放入本产品内（可听到“咔哒”一声）。

清洁吸嘴接合点

吸嘴的接合点可能被大块污垢阻塞。请按照以下步骤清洁接合点。

1 关闭产品。

2 按吸嘴拆卸按钮 (1) 将握柄从吸嘴取下 (2)。(图 17)

3 清理接合点处的大块污垢。

4 将握柄插回吸嘴（可听到“咔哒”一声）。(图 2)

清洁滚刷

如果发现滚刷上积了脏物，您可以按照以下步骤清洁滚刷。

1 关闭产品。

2 按吸嘴拆卸按钮 (1) 将握柄从吸嘴取下 (2)。(图 17)

3 将两用吸尘嘴倒转。

4 旋转滚刷，直到切割沟槽朝向您。

5 使用一把剪刀剪掉缠住滚刷的毛发、线头等等。(图 18)

6 从滚刷上摘下绒毛、毛发及其他污物。

注意：您也可以拆下滚刷以便于清洁。

拆下滚刷

1 关闭产品。

2 按吸嘴拆卸按钮 (1) 将握柄从吸嘴取下 (2)。(图 17)

3 将两用吸尘嘴倒转。

4 拧松滚刷固定器。(图 19)

5 首先将滚刷从地板吸嘴右侧取出，然后从滚刷左侧拆下驱动带。(图 20)

6 从滚刷和滚刷沟槽上摘下绒毛、毛发及其他污物。

将滚刷插回。

1 将驱动带滑入滚刷左端，并先将滚刷左端插入地板吸嘴。然后再将滚刷剩余部位装入地板吸嘴。(图 21)

2 将固定器装到地板吸嘴，拧紧螺丝。(图 22)

注意：如果没有正确插入滚刷，则无法重新安装固定器。

存储

1 将握柄向地板吸嘴推动，将其锁定在固定位置。(图 6)

- 2 您可以将本产品放在充电座上。（图 3）
- 3 要将本产品存储在家具下，请折叠握柄上半部分，缩短本产品。

环保

- 弃置产品时，请不要将其与一般生活垃圾堆放在一起；应将其交给官方指定的回收中心。这样做有利于环保。（图 23）
- 内置可充电电池含有可污染环境的物质。在扔掉本产品前取出电池。请勿将电池与普通家庭垃圾一同丢弃，而应将其送到正式的回收点，也可以将产品交给飞利浦服务中心。维修中心的员工会帮您取出电池，并以环保的方式处理。（图 24）

卸下充电电池

镍氢电池在高温或燃烧环境可能发生爆炸。
只在充电电池的电量完全用尽时将其取出。

您可以按照以下方法取出充电电池。

- 1 让产品运转，直到停止为止。
- 2 用螺丝刀从握柄卸下带排气孔的面板。
- 3 拧下握柄侧面上的螺钉。（图 25）
- 4 取下盖子。
- 5 断开连接器，使电池与握柄分离。（图 26）
- 6 卸下充电电池。（图 27）

保修与服务

如果您需要服务或信息，或者有任何疑问，请访问飞利浦网站：www.philips.com。您也可以与所在国家/地区的飞利浦顾客服务中心联系（可从全球保修卡中找到其电话号码）。如果您的所在地没有飞利浦客户服务中心，可与当地的飞利浦经销商联系。


故障种类和处理方法

本章归纳了您的产品在使用时最常遇到的问题。有关详细说明，请参阅相关章节。如果您无法解决问题，请与贵国/地区的飞利浦客户服务中心联系。

问题	解决方法
产品不能工作。	电池可能电量不足。请给电池充电。
	请将本产品送往当地的飞利浦经销商，或经飞利浦授权的顾客服务中心，请他们检查。
产品不能充电。	将本产品正确放在充电座上。充电指示灯亮，表示产品正在充电。
	将适配器正确插入电源插座。充电指示灯亮起，表示产品正在充电。
本产品不能正确吸尘。	集尘桶可能没有正确安装在本产品内。请将集尘桶正确安装在本产品内。
	集尘桶可能已满。清空集尘桶。
	滤网可能阻塞。清洁锥形滤网和滤布（见“清洁”一章）。

问题	解决方法
	吸嘴接合点可能被大块污垢阻塞。清洁吸嘴接合点（见“清洁”一章）。
灰尘从产品中溢出。	集尘桶可能已满。清空集尘桶。
	集尘桶可能没有正确安装在本产品内。请将集尘桶正确安装在本产品内。
	滤网可能没有正确安装。请将锥形滤网正确安装在集尘桶盖内，并重新将滤布正确安装到集尘桶底部。
产品噪音过大。	集尘桶内有固体。倒空集尘桶并清洁滤网（见“清洁”一章）。
	吸嘴接合点可能被大块污垢阻塞。清洁吸嘴接合点（见“清洁”一章）。
产品无法有效地清扫尘土。	滚刷被阻塞。清洁滚刷（见“清洁”一章）。

冠德科技(北海)有限公司
Kuantech (Beihai) Co., Ltd




此标识为基于**2006/02/28**公布的《电子信息产品污染控制管理办法及标识要求》,适用于在中国所售电子信息产品的环保期限之标识,不仅限于要求遵守与此产品相关的安全与使用上的注意事项,在由制造日起算的该年限内,要求无因产品中的有害物质的发生外泄或突变,而对环境造成严重污染或对身体使用人,财产造成严重之损害,且,此年限要求基于《电子信息产品的环保使用期限通则》的“技术寿命法”而导出之年限。

<有附属的消耗品时，以下为记载(例)>

注) 环保使用期限结束需要废旧物资弃时,务必配合遵从电子信息产品的法律法规与回收,循环利用相关的各省市的法律法规。

Switching power supply: KSAS0101800030HC

有毒有害物质或元素名称及含量标识格式

环保使用年限	部件名称	有毒有害物质或元素					
		铅 X	汞 ○	镉 ○	六价铬 ○	多溴联苯 ○	多溴联苯醚 ○
	电路板组件	○	○	○	○	○	○
	外壳	○	○	○	○	○	○
	AC插脚	○	○	○	○	○	○
	DC线	○	○	○	○	○	○
	标贴	○	○	○	○	○	○

- : 表示该有毒有害物质在该部件所有均质材料中的含量均在SJ/T11363-2006标准规定的限量要求以下。
Indicates that this toxic or hazardous substance contained in all of the homogeneous materials for this part is below the limit requirement in SJ/T11363-2006.
- X: 表示该有毒有害物质至少在该部件的某一均质材料中的含量超出SJ/T11363-2006标准规定的限量要求,在ROHS豁免范围内。
Indicates that this toxic or hazardous substance contained in at least one of the homogeneous materials used for this part is above the limit requirement in SJ/T11363-2006. Inside the range of ROHS exempted.

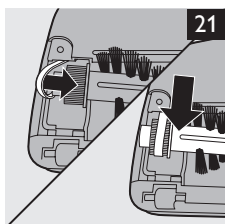
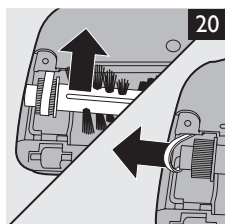
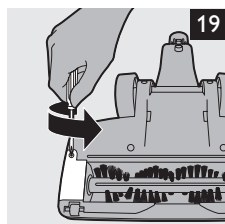
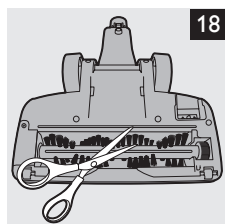
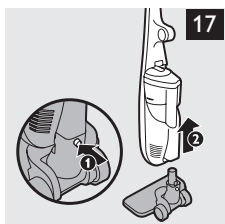
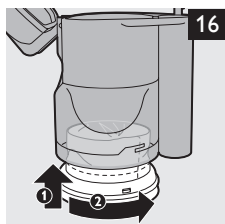
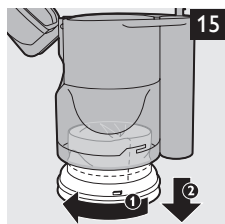
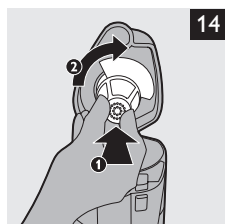
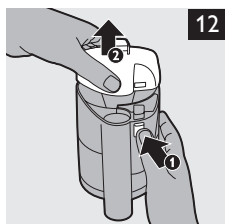
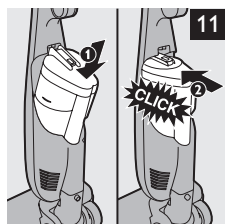
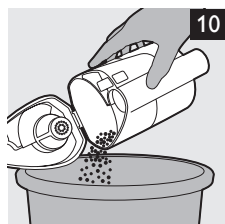
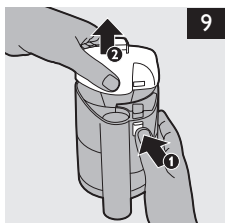
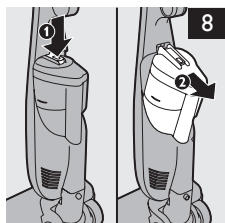
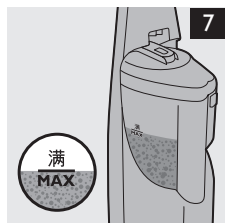
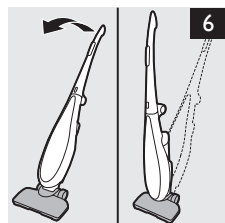
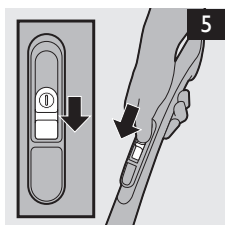
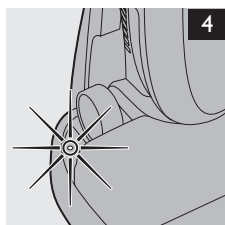
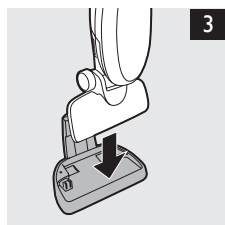
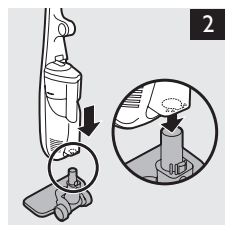
PHILIPS

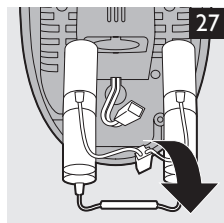
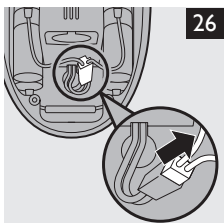
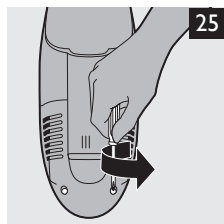
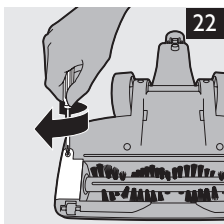
产品 : 飞利浦立式充电式吸尘器
型号 : FC6151
额定电压 : 220V~
额定频率 : 50Hz
额定输入功率: 9 W
生产日期 : 请见产品底部
产地 : 中国

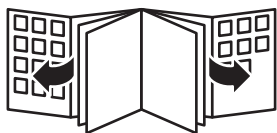


飞利浦电子香港有限公司
香港新界沙田香港科学园科技道东五号
全国顾客服务热线: 4008 800 008

本产品根据国标GB4706.1-2005, GB4706.7-2004,
GB4343.1-2009及GB17625.1-2003制造









www.philips.com



100% recycled paper
100% 循环再造纸

4222.003.3559.1