

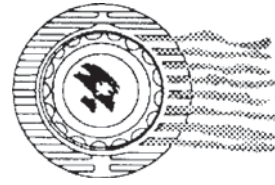
# Pressure Cleaner Adapter For Use With Return Fitting Light For AboveGround Pools

1. Determine which side of the Flow Director the water is jetting from. **(Fig. #1)**
2. Turn the pump off.
3. Rotate the “Flow Director” pointing the flow of water straight upwards. **(Fig. #2)**
4. Check the back of the pressure adapter to ensure that the locks are in the unlocked position. **(Fig. #3)**
5. Catch the Adapter bottom on the bottom of the light Flow Director. **(Fig. #4)**
6. Swing Adapter up and hold securely to Flow Director. **(Fig. #4)** NOTE: Do not push on Adapter lens to avoid snapping lens out of position.
7. Rotate locks until Adapter is held in position. **(Fig. #5)**  
Do not over tighten locks.
8. Turn the pump on.

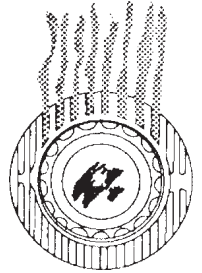
**NOTE:** If it is desired to have Adapter outlet on bottom side of Flow Director follow above instructions and when finished:

- A. Loosen nut on back of light to end of threads.
- B. Very carefully rotate Adapter and Flow Director taking care not to tear liner with Adapter locks.
- C. Tighten nut on back of light (finger-tight only).

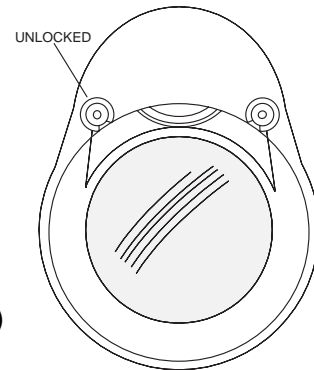
**FLOW DIRECTOR**



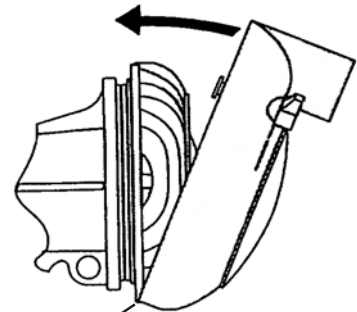
(Fig. #1)



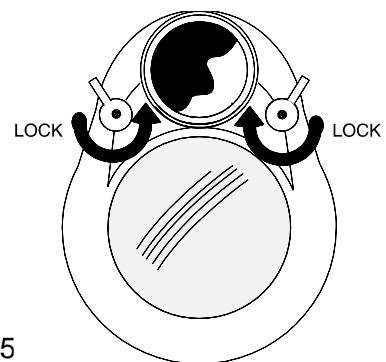
(Fig. #2)



(Fig. #3)



(Fig. #4)



(Fig. #5)



## ⚠ WARNING

RISK OF BODILY INJURY! DO NOT USE THIS DEVICE AS A STEP OR HAND HOLD. USING THIS DEVICE AS A STEP OR HAND HOLD CAN RESULT IN BODILY INJURY OR PROPERTY DAMAGE.

**Pentair Pool Products**

1620 Hawkins Ave., Sanford, NC 27330 • (919) 774-415  
10951 West Los Angeles Ave., Moorpark, CA 93021 • (805) 523-2400

P/N 99791200 • 3-25-02



**Pentair**  
**Pool Products®**

Because **reliability** matters most