

# FullFlow™ Valve Actuator Kit

## IMPORTANT SAFETY INSTRUCTIONS *READ AND FOLLOW ALL INSTRUCTIONS* SAVE THESE INSTRUCTIONS

### **Warning**

Valve actuators are powerful and generate large amounts of torque. Inserting body parts inside the valve specially the waste port may cause serious injuries. Permanently plumb the waste port to drain or attach at least nine inches of pipe and/or fittings to waste port to eliminate injury.

### **WARNING**

Before installing this product, read and follow all warning notices and instructions accompanying this valve. Failure to follow safety warnings and instructions can result in severe injury, death, or property damage. **Read and follow your valve, actuator and control panel manuals before installing and operating your system.** Call (800) 831-7133 for free copies of these instructions.

### **Important Notice**



Attention Installer.

This manual contains important information about the installation, operation and safe use of this product. This information should be given to the owner/operator of this equipment.

#### **SECTION I. How does your kit work**

This kit contains the necessary components to actuate your FullFlow valves for automation.

#### **SECTION II. Installation**

- A. Remove the valve handle by removing the screw.
- B. Align the four screw holes on the Adapter Actuator to the holes on the valve cap and insert screws.



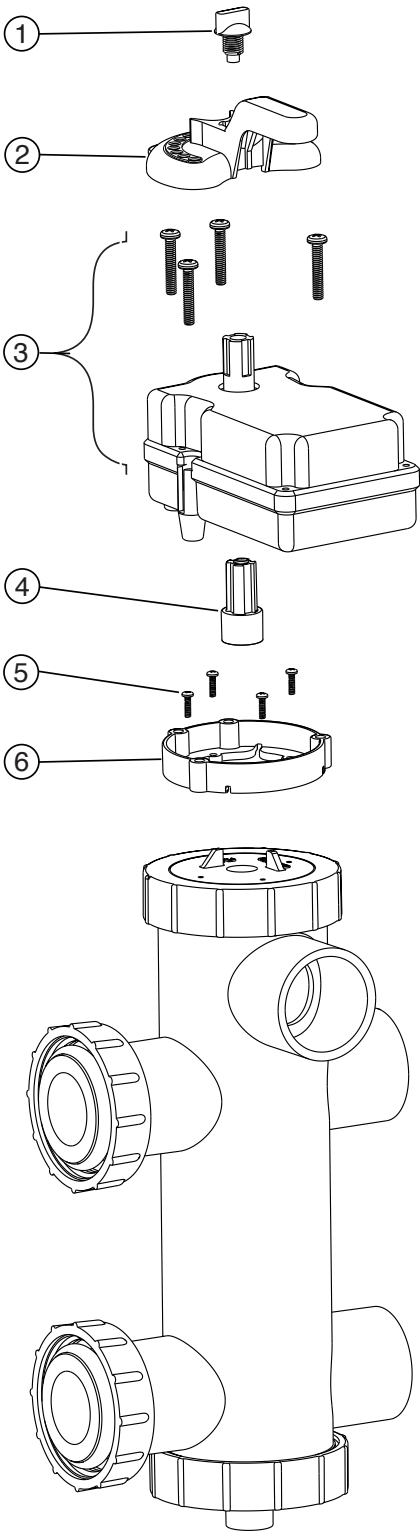
### **Caution**

Do Not over-tighten screws.

- C. Align Shaft Actuator Adapter keys to valve stem (shaft) keys and insert.
- D. Mount actuator using machine screws provided with the actuator.
- E. Assemble the handle, P/N - VLVHANDL, provided with your actuator kit.
- F. Assemble the knob.

SECTION III. Replacement Parts

Item No.	Part No.	Description	Qty.
1	VLVKNOB	Knob	1
2	VLVHANDL	Handle	1
3	CVA24L	Valve Actuator	1
4	278005	Shaft - Actuator Adaptor	1
5	072536	Screw - 8 x 5/8 hi-lo s/s	4
6	278023	Adaptor - Actuator	1



SAVE THESE INSTRUCTIONS.