

Easy Setting Guide

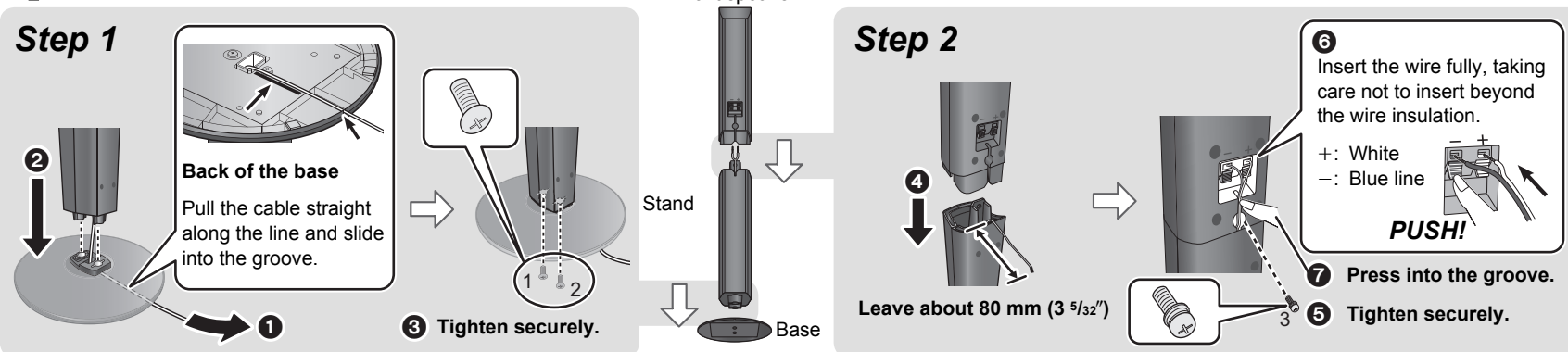
Blu-ray Disc Home Theater Sound System

Model No. **SC-BT730**

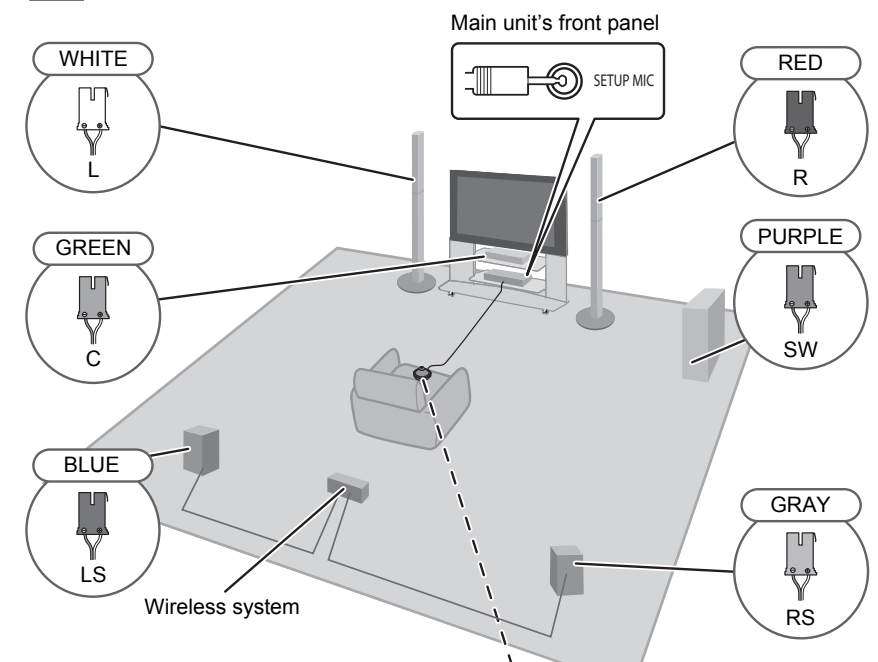
The order of setting



1 Prepare the speakers

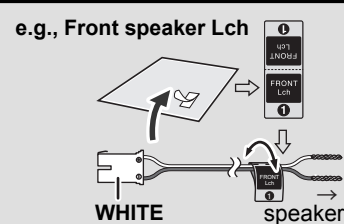


2 Place the speakers



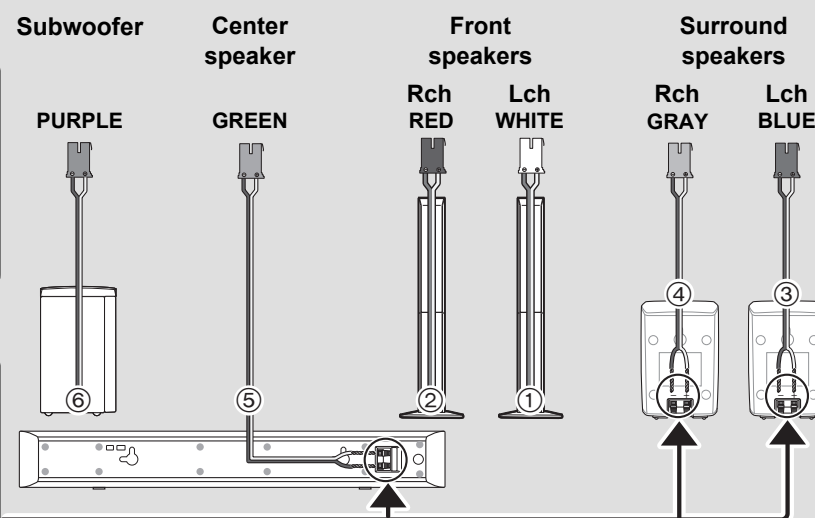
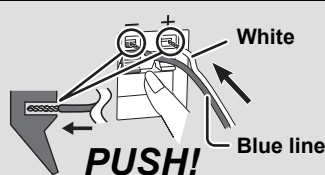
Step 3

Label each speaker cable by attaching the numbered sticker at the position indicated in the illustration. Be sure to match the number on each sticker with the circled number in the illustration.



Step 4

Connect the speaker cables. Insert the wire fully, taking care not to insert beyond the wire insulation.



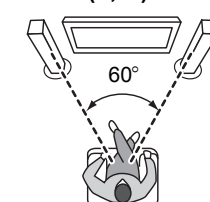
Refer to the rear label of the speaker before connecting the corresponding cable.
Verify the type of speaker with the label on the rear of the speaker.



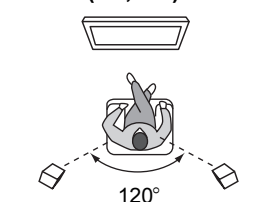
Auto speaker setup microphone (included)
Place the Auto speaker setup microphone at the actual seating position. (At ear level when seated.)

Recommended

Front speakers (L, R)



Surround speakers (LS, RS)

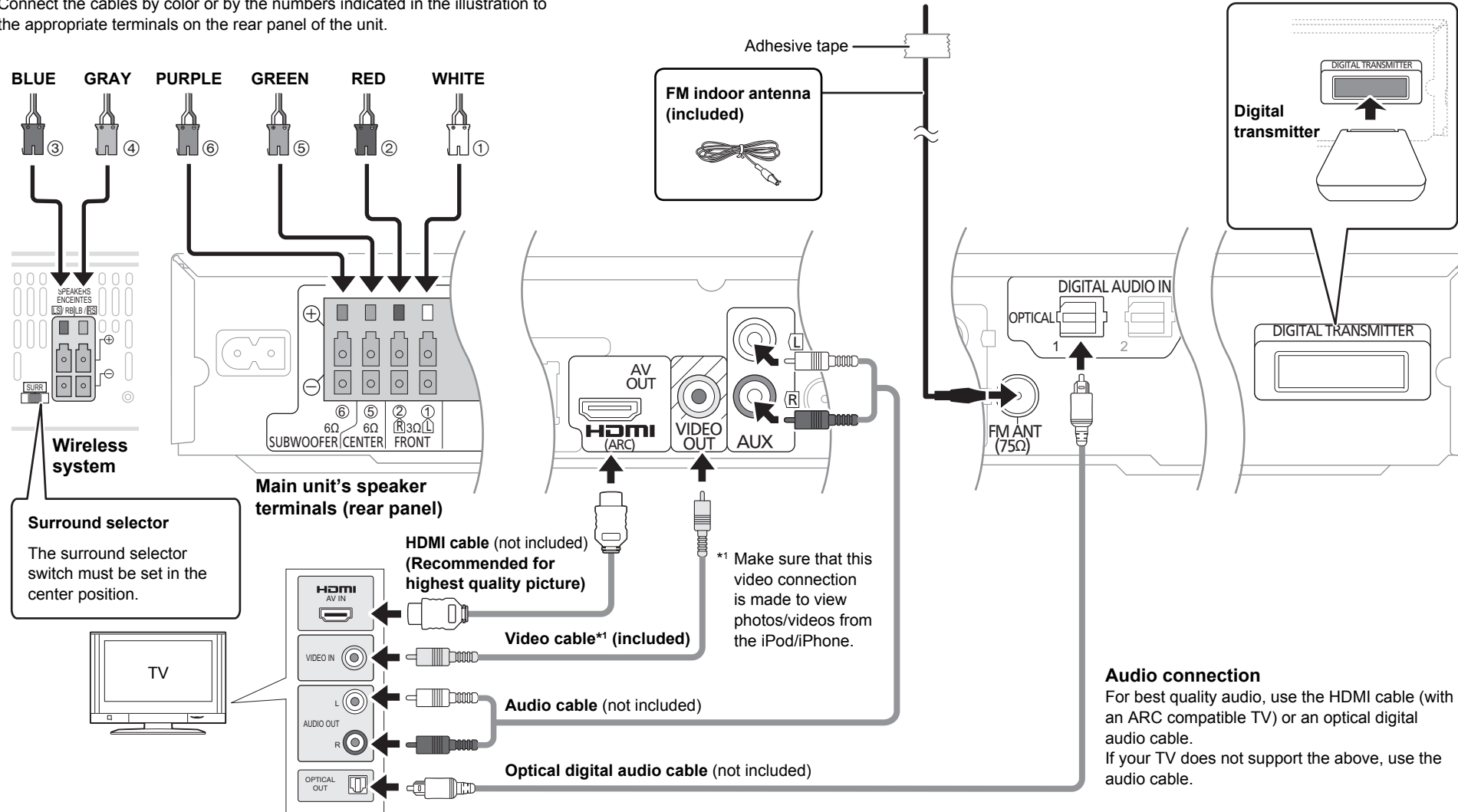


Speakers	(A)
Front speakers	Front/Avant
Center speaker	Center/Centre
Surround speakers	SURROUND/AMBIOPHONIE

3 Connect the cables

For detailed information, refer to the operating instructions.

Connect the cables by color or by the numbers indicated in the illustration to the appropriate terminals on the rear panel of the unit.

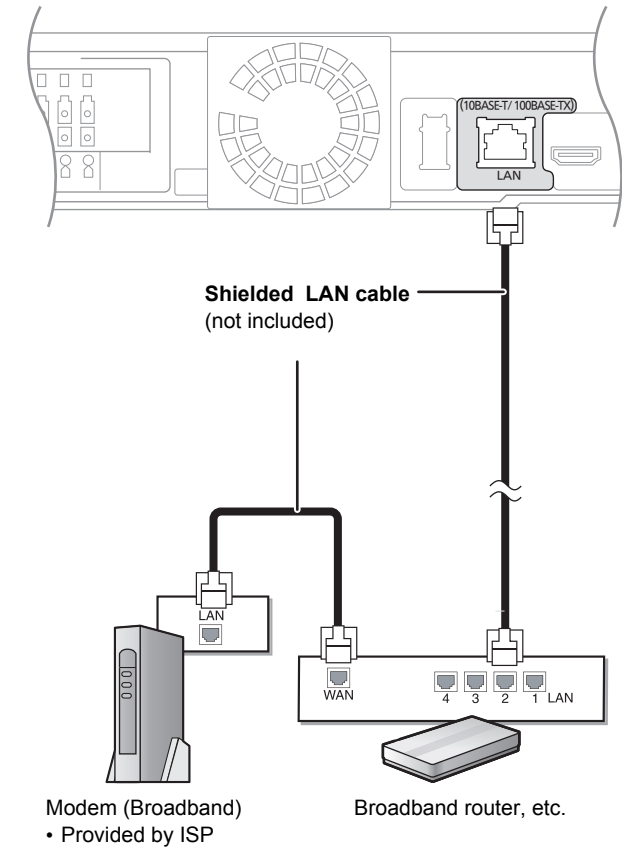


Other connection

Broadband Network Connections (Optional)

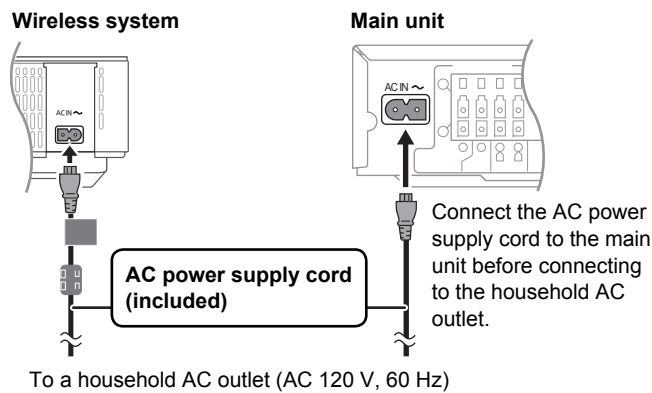
By connecting this unit to the network, you can use the BD-Live and VIERA CAST features.

Main unit



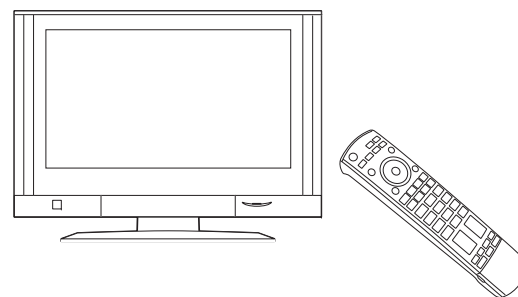
4 Turn on the system

1 Connect the AC power supply cord



2 Turn on the TV

Turn on your TV and select the appropriate video input mode (e.g., VIDEO 1, AV 1, HDMI, etc.) to suit the connections to this unit.

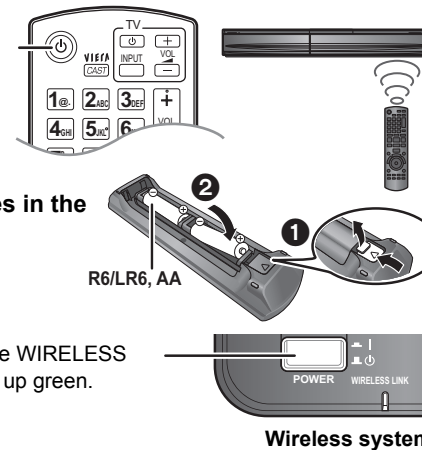


3 Turn on the system

Press [] to turn on the main unit.

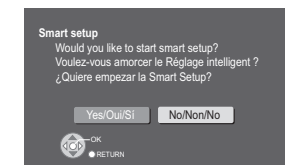
Installing batteries in the remote control

Press and ensure the WIRELESS LINK indicator lights up green.



4 The Smart setup starts

The on screen display will guide you through the steps.*2



Press [◀, ▶] to select [Yes/Oui/S].

*2 If you want to restart the Smart setup:
Refer to "STEP 6: Smart setup / Easy setup" in the operating instructions.