

Thank you for purchasing this product.
For optimum performance and safety, please read these instructions carefully.
Please keep this manual for future reference.

If you have any questions, contact:
1-800-211-PANA (7262)

La guía rápida en español se encuentra en la contraportada.

Panasonic Consumer Marketing Company of North America,
Division of Panasonic Corporation of North America
One Panasonic Way, Secaucus,
New Jersey 07094
<http://www.panasonic.com>

© Panasonic Corporation 2012
Printed in China

The model number and serial number of this product can be found on either the back or the bottom of the unit. Please note them in the space provided below and keep for future reference.

MODEL NUMBER SC-GT07

SERIAL NUMBER

User memo:

DATE OF PURCHASE

DEALER NAME

DEALER ADDRESS

TELEPHONE NUMBER

CAUTION
RISK OF ELECTRIC SHOCK
DO NOT OPEN

CAUTION: TO REDUCE THE RISK OF ELECTRIC SHOCK, DO NOT REMOVE SCREWS. NO USER-SERVICEABLE PARTS INSIDE. REFER SERVICING TO QUALIFIED SERVICE PERSONNEL.

The lightning flash with arrowhead symbol, within an equilateral triangle, is intended to alert the user to the presence of uninsulated "dangerous voltage" within the product's enclosure that may be of sufficient magnitude to constitute a risk of electric shock to persons.

The exclamation point within an equilateral triangle is intended to alert the user to the presence of important operating and maintenance (servicing) instructions in the literature accompanying the appliance.

Panasonic®

Owner's Manual

Compact Stereo System

Model No. **SC-GT07**

WARNING!

Unit

- To reduce the risk of fire, electric shock or product damage,
 - Do not expose this unit to rain, moisture, dripping or splashing.
 - Do not place objects filled with liquids, such as vases, on this unit.
 - Use only the recommended accessories.
 - Do not remove covers.
 - Do not repair this unit by yourself. Refer servicing to qualified service personnel.

Button-type battery (Lithium battery)

- Risk of fire, explosion and burns. Do not disassemble, heat above 60°C (140°F) or incinerate.

CAUTION!

Unit

- To reduce the risk of fire, electric shock or product damage,
 - Do not install or place this unit in a bookcase, built-in cabinet or in another confined space. Ensure this unit is well ventilated.
 - Do not obstruct this unit's ventilation openings with newspapers, tablecloths, curtains, and similar items.
 - Do not place sources of naked flames, such as lighted candles, on this unit.
- Install this unit so that the power cord can be unplugged from the socket outlet immediately if any problem occurs.

Button-type battery (Lithium battery)

- Insert with poles aligned.
- Do not touch the terminals (+ and -) with metal objects.
- Do not recharge, disassemble, remodel, heat or throw into fire.
- Keep out of reach of children.
- If any electrolyte should come into contact with your hands or clothes, wash it off thoroughly with water.
- If any electrolyte should come into contact with your eyes, never rub the eyes. Rinse eyes thoroughly with water, and then consult a doctor.
- Danger of explosion if battery is incorrectly replaced. Replace only with the type recommended by the manufacturer.
- When disposing the batteries, please contact your local authorities or dealer and ask for the correct method of disposal.
- Do not heat or expose to flame.
- Do not leave the battery(ies) in a car exposed to direct sunlight for a long period of time with doors and windows closed.

< For USA-California only >

This product contains a CR Coin Cell Lithium Battery which contains Perchlorate Material - special handling may apply.

See www.dtsc.ca.gov/hazardouswaste/perchlorate.

Product identification marking is located on the bottom of the unit.

FCC Note:

This equipment has been tested and found to comply with the limits for a Class B digital device, pursuant to Part 15 of the FCC Rules.

These limits are designed to provide reasonable protection against harmful interference in a residential installation. This equipment generates, uses and can radiate radio frequency energy and, if not installed and used in accordance with the instructions, may cause harmful interference to radio communications. However, there is no guarantee that interference will not occur in a particular installation. If this equipment does cause harmful interference to radio or television reception, which can be determined by turning the equipment off and on, the user is encouraged to try to correct the interference by one or more of the following measures:

- Reorient or relocate the receiving antenna.
- Increase the separation between the equipment and receiver.
- Connect the equipment into an outlet on a circuit different from that to which the receiver is connected.
- Consult the dealer or an experienced radio/TV technician for help.

Any unauthorized changes or modifications to this equipment would void the user's authority to operate this device.

This device complies with Part 15 of the FCC Rules. Operation is subject to the following two conditions:
(1) This device may not cause harmful interference, and
(2) this device must accept any interference received, including interference that may cause undesired operation.

Responsible Party:

Panasonic Corporation of North America
One Panasonic Way, Secaucus, NJ 07094

Support Contact:

Panasonic Consumer Marketing Company of North America
Telephone No.: 1-800-211-PANA (7262)

Panasonic Consumer Marketing Company of North America,
Division of Panasonic Corporation of North America
One Panasonic Way, Secaucus, New Jersey 07094

Limited Warranty Coverage

(For USA and Puerto Rico Only)

If your product does not work properly because of a defect in materials or workmanship, Panasonic Consumer Marketing Company of North America (referred to as "the warrantor") will, for the length of the period indicated on the chart below, which starts with the date of original purchase ("warranty period"), at its option either (a) repair your product with new or refurbished parts, (b) replace it with a new or a refurbished equivalent value product, or (c) refund your purchase price. The decision to repair, replace or refund will be made by the warrantor.

Product or Part Name	Parts	Labor
Audio Products (except items below)	1 year	1 year
DVD Home Theater System	1 year	1 year
Home Theater Audio System	1 year	1 year
SD Memory Cards, Rechargeable Battery Packs (defective exchange)	90 days	Not Applicable

During the "Labor" warranty period there will be no charge for labor. During the "Parts" warranty period, there will be no charge for parts. This Limited Warranty excludes both parts and labor for non-rechargeable batteries, antennas, and cosmetic parts (cabinet). This warranty only applies to products purchased and serviced in the United States or Puerto Rico. This warranty is extended only to the original purchaser of a new product which was not sold "as is".

Carry-In or Mail-In Service

To find a service center please visit <http://www.panasonic.com/help> or call 1-800-211-PANA (7262).

When shipping the unit, carefully pack, include all supplied accessories listed in the Owner's Manual, and send it prepaid, adequately insured and packed well in a carton box. When shipping Lithium Ion batteries please visit our Web Site at www.panasonic.com/BatteryHandling as Panasonic is committed to providing the most up to date information. Include a letter detailing the complaint, a return address and provide a daytime phone number where you can be reached. A valid registered receipt is required under the Limited Warranty.

Maintenance

To clean this system, wipe with a soft, dry cloth

- Never use alcohol, paint thinner or benzene to clean this system.
- Before using chemically treated cloth, read the instructions that came with the cloth carefully.

Troubleshooting

Before requesting service, make the following checks. If you are in doubt about some of the check points, or if the solutions indicated do not solve the problem, refer to "Customer Services Directory (United States and Puerto Rico)".

No power

- Ensure the AC power supply cord is connected properly.

No sound

- Increase the volume of the system.
- Examine the volume of the iPod/iPhone or portable audio equipment.
- Make sure that the iPod/iPhone or portable audio equipment is actually playing something.

Sound is distorted

- Lower the volume of the system.
- Make sure that the equalizer function of the iPod/iPhone or portable audio equipment is switched off.

No operations can be done with the remote control

- Remove the insulation sheet before you use the remote control for the first time.
- Examine that the battery is installed correctly.
- The battery is weak. Replace it with a new one.

Green status indicator blinks

- The system is checking the connected iPod/iPhone. If the battery of iPod/iPhone is depleted, the system will charge the iPod/iPhone before it can connect to the iPod/iPhone.
- Switch off the system and then switch it on again.

Panasonic Home Audio Products Limited Warranty

IF REPAIR IS NEEDED DURING THE WARRANTY PERIOD, THE PURCHASER WILL BE REQUIRED TO FURNISH A SALES RECEIPT/PROOF OF PURCHASE INDICATING DATE OF PURCHASE, AMOUNT PAID AND PLACE OF PURCHASE. CUSTOMER WILL BE CHARGED FOR THE REPAIR OF ANY UNIT RECEIVED WITHOUT SUCH PROOF OF PURCHASE.

Limited Warranty Limits And Exclusions

This warranty ONLY COVERS failures due to defects in materials or workmanship, and DOES NOT COVER normal wear and tear or cosmetic damage. The warranty ALSO DOES NOT COVER damages which occurred in shipment, or failures which are caused by products not supplied by the warrantor, or failures which result from accidents, misuse, abuse, neglect, mishandling, misapplication, alteration, faulty installation, set-up adjustments, misadjustment of consumer controls, improper maintenance, power line surge, lightning damage, modification, introduction of sand, humidity or liquids, commercial use such as hotel, office, restaurant, or other business or rental use of the product, or service by anyone other than a Factory Service Center or other Authorized Servicer, or damage that is attributable to acts of God.

THERE ARE NO EXPRESS WARRANTIES EXCEPT AS LISTED UNDER "LIMITED WARRANTY COVERAGE".

THE WARRANTOR IS NOT LIABLE FOR INCIDENTAL OR CONSEQUENTIAL DAMAGES RESULTING FROM THE USE OF THIS PRODUCT, OR ARISING OUT OF ANY BREACH OF THIS WARRANTY. (As examples, this excludes damages for lost time, travel to and from the servicer, loss of or damage to media or images, data or other memory or recorded content. The items listed are not exclusive, but for illustration only.)

ALL EXPRESS AND IMPLIED WARRANTIES, INCLUDING THE WARRANTY OF MERCHANTABILITY, ARE LIMITED TO THE PERIOD OF THE LIMITED WARRANTY.

Some states do not allow the exclusion or limitation of incidental or consequential damages, or limitations on how long an implied warranty lasts, so the exclusions may not apply to you. This warranty gives you specific legal rights and you may also have other rights which vary from state to state. If a problem with this product develops during or after the warranty period, you may contact your dealer or Service Center. If the problem is not handled to your satisfaction, then write to the warrantor's Consumer Affairs Department at the addresses listed for the warrantor.

iPod/iPhone does not switch on

- Examine the battery of iPod/iPhone to make sure it is not depleted. Charge the iPod/iPhone.
- Switch off the system and then switch it on again.

iPod/iPhone does not respond

- Make sure that the system is in iPod mode.
- The iPod/iPhone is not connected correctly. Remove the iPod/iPhone and connect it again.

iPod/iPhone does not charge

- Examine the connection.

PARTS AND SERVICE, WHICH ARE NOT COVERED BY THIS LIMITED WARRANTY, ARE YOUR RESPONSIBILITY.

Customer Services Directory (United States and Puerto Rico)

Obtain Product Information and Operating Assistance; locate your nearest Dealer or Service Center; purchase Parts and Accessories; or make Customer Service and Literature requests by visiting our Web Site at:
<http://www.panasonic.com/help>
or, contact us via the web at:
<http://www.panasonic.com/contactinfo>
You may also contact us directly at:
1-800-211-PANA (7262)
Monday-Friday 9am-9pm, Saturday-Sunday 10am-7pm EST

For hearing or speech impaired TTY users, TTY: 1-877-833-8855

Accessory Purchases (United States and Puerto Rico)

Purchase Parts, Accessories and Instruction Books online for all Panasonic Products by visiting our Web Site at:
<http://www.pstc.panasonic.com>
or, send your request by E-mail to:
npcparts@us.panasonic.com
You may also contact us directly at:
1-800-332-5368 (Phone) 1-800-237-9080 (Fax Only)
(Monday-Friday 9am-9pm EST)
Panasonic National Parts Center
20421 84th Ave. S., Kent, WA 98032
(We accept Visa, MasterCard, Discover Card, American Express)

For hearing or speech impaired TTY users, TTY: 1-866-605-1277

As of January 2012

IMPORTANT SAFETY INSTRUCTIONS

Read these operating instructions carefully before using the unit. Follow the safety instructions on the unit and the applicable safety instructions listed below. Keep these operating instructions handy for future reference.

- Read these instructions.
- Keep these instructions.
- Heed all warnings.
- Follow all instructions.
- Do not use this apparatus near water.
- Clean only with dry cloth.
- Do not block any ventilation openings. Install in accordance with the manufacturer's instructions.
- Do not install near any heat sources such as radiators, heat registers, stoves, or other apparatus (including amplifiers) that produce heat.
- Do not defeat the safety purpose of the polarized or grounding-type plug. A polarized plug has two blades with one wider than the other. A grounding-type plug has two blades and a third grounding prong. The wide blade or the third prong are provided for your safety. If the provided plug does not fit into your outlet, consult an electrician for replacement of the obsolete outlet.
- Protect the power cord from being walked on or pinched particularly at plugs, convenience receptacles, and the point where they exit from the apparatus.
- Only use attachments/accessories specified by the manufacturer.
- Use only with the cart, stand, tripod, bracket, or table specified by the manufacturer, or sold with the apparatus. When a cart is used, use caution when moving the cart/apparatus combination to avoid injury from tip-over.
- Unplug this apparatus during lightning storms or when unused for long periods of time.
- Refer all servicing to qualified service personnel. Servicing is required when the apparatus has been damaged in any way, such as power-supply cord or plug is damaged, liquid has been spilled or objects have fallen into the apparatus, the apparatus has been exposed to rain or moisture, does not operate normally, or has been dropped.

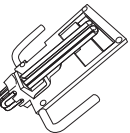
Supplied accessories

Check and identify the supplied accessories.

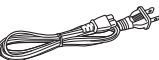
Use numbers indicated in parentheses when asking for replacement parts. (Product numbers correct as of February 2012. This may be subject to change.)

To order accessories, refer to "Accessory Purchases (United States and Puerto Rico)".

1 x Setting stand
(RFE0239)



1 x AC power supply cord
(K2CB2CB00021)



1 x Remote control (with a battery)
(RFE0238)



- If you see this symbol -

Information on Disposal in other Countries outside the European Union



This symbol is only valid in the European Union. If you wish to discard this product, please contact your local authorities or dealer and ask for the correct method of disposal.

Made for
iPod iPhone

"Made for iPod" and "Made for iPhone" mean that an electronic accessory has been designed to connect specifically to iPod, or iPhone, respectively, and has been certified by the developer to meet Apple performance standards.

Apple is not responsible for the operation of this device or its compliance with safety and regulatory standards. Please note that the use of this accessory with iPod, or iPhone may affect wireless performance.

iPhone®, iPod®, iPod classic®, iPod nano®, and iPod touch® are trademarks of Apple Inc., registered in the U.S. and other countries.

Specifications

Amplifier section

RMS output power stereo mode
Front Ch (both ch driven)
20 W per channel (6 Ω), 1 kHz, 10% THD
Total RMS stereo mode power 40 W
FTC output power stereo mode
Front Ch (both ch driven)
15 W per channel (6 Ω), 20 Hz to 20 kHz, 1% THD
Total FTC stereo mode power 30 W

Terminal section

AUX (rear)
Terminal Stereo, 3.5 mm (1/8") jack

Speaker section

Type 1 way, 1 speaker system (bass reflex)

Speaker unit(s)
Full range 6.5 cm (2 1/2") cone type
Impedance 6 Ω

General

Power supply AC 120 V, 60 Hz
Power consumption 17 W
Dimensions (W x H x D)
main set (without stand) 400 mm x 175 mm x 91 mm
(15 3/4" x 6 7/8" x 3 1/2")
Mass (Weight) 2.7 kg (6 lbs)
Operating temperature range 0°C to +40°C
(+32°F to +104°F)
Operating humidity range 20% to 80% RH
(no condensation)

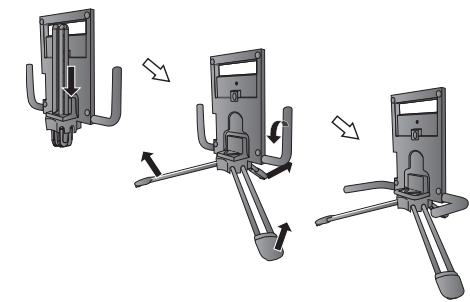
Power consumption in standby mode
0.1 W (approximate)

Note:
• Specifications are subject to change without notice.
• Mass (weight) and dimensions are approximate.
• Total harmonic distortion is measured by the digital spectrum analyzer.

Getting started

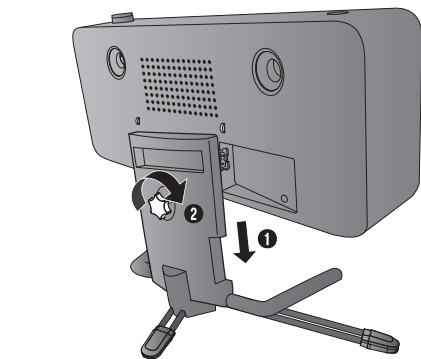
Making the connections

1 Prepare the setting stand.



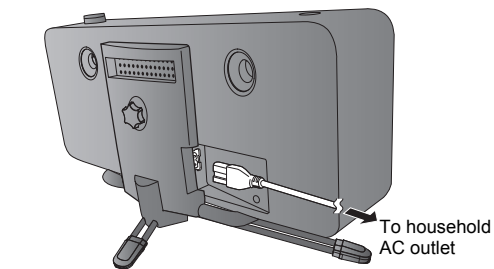
2 Install the unit on the setting stand.

Align and put the unit on the setting stand, turn the screw clockwise to secure the unit.



3 Connect the AC power supply cord.

The system consumes approximately 0.1 W when it is in standby mode.



Do not use an AC power supply cord from other equipment.

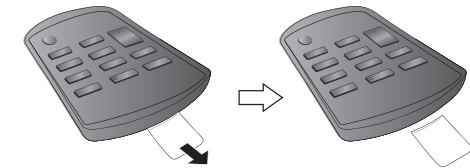
Note:

- Do not sit on top of the unit.
- Some settings return to default when you disconnect the system.
- These speakers do not have magnetic shielding. Do not put them near TVs, PCs or other equipment easily influenced by magnetism.
- Do not remove the speaker nets.
- Hold the unit firmly when moving it. Do not hold the setting stand.

Preparing the remote control

Before using

Remove the insulation sheet.



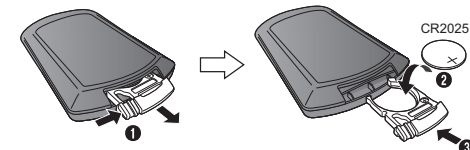
Replacing the battery

Replace with a new battery (CR2025 lithium battery).

1 While pressing the stopper, pull out the battery holder.

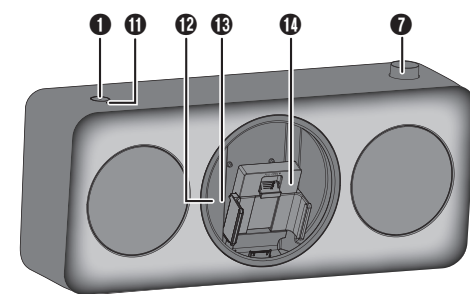
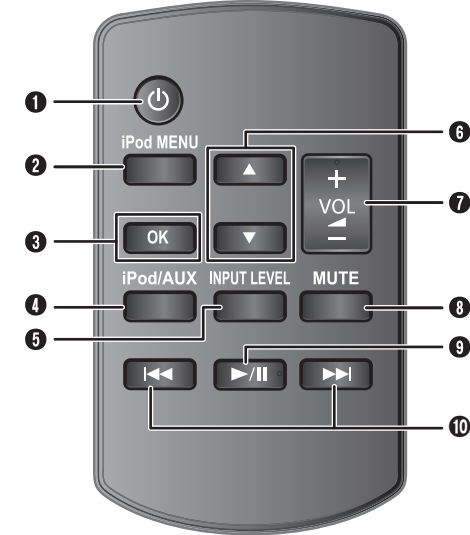
2 Insert a new battery with the (+) side facing up.

3 Push the battery holder back fully.



Warning!
Keep the button-type battery out of reach of children to prevent swallowing.

Overview of controls



1 Standby/on switch [⏻], [⏻/⏮]

Press to switch the unit from on to standby mode or vice versa. In standby mode, the unit is still consuming a small amount of power.

2 View the iPod menu

Confirm a selection
Set or cancel the auto off function

3 Select iPod or AUX mode

4 Adjust the audio input level in AUX mode

5 Select an item

6 Adjust the volume of the system

7 Mute the sound of the system

In iPod mode: The amber and green status indicators blink alternately.
In AUX mode: The amber status indicator blinks continuously.

Press the button again to cancel.
Mute is also canceled when you adjust the volume or when you switch off the system.

8 Start or pause playback

9 Skip or search track

10 Power indicator

On: The system is on
Off: The system is in standby mode

11 Status indicator

Green: iPod mode
Amber: Set or cancel the auto off function
Mute function is on
Off: AUX mode
The green status indicator blinks each time you perform an operation.

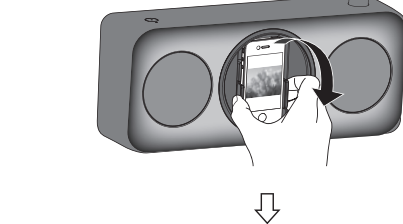
12 Remote control sensor

Maximum range: 7 m (23 ft) directly in front

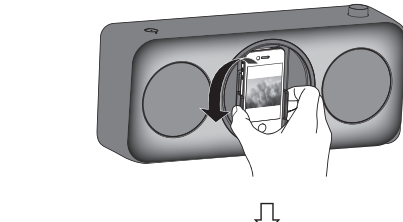
13 Dock for iPod/iPhone

You can turn the dock clockwise or counter-clockwise to the horizontal position to view the iPod/iPhone in widescreen mode.

Hold the side holder and turn clockwise.



Hold the side holder and turn counter-clockwise.

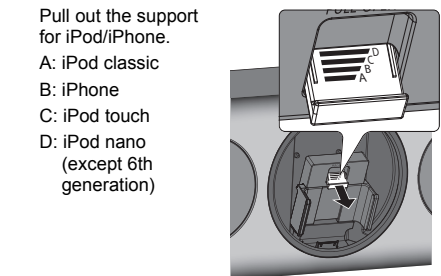
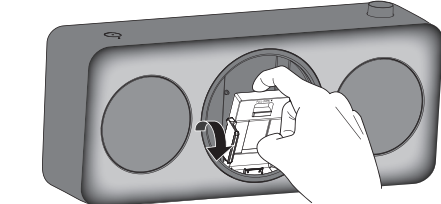


Using an iPod/iPhone

Inserting an iPod/iPhone

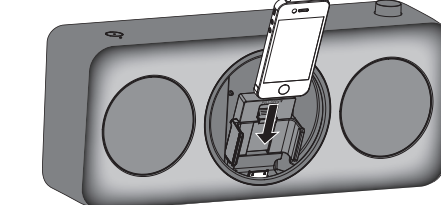
1 Prepare the dock.

Gently pull out the dock towards you.

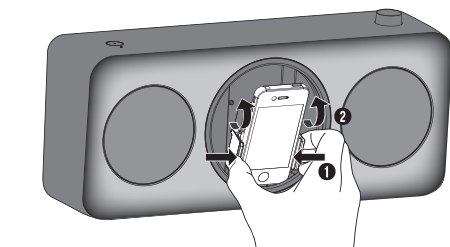


2 Insert the iPod/iPhone.

Make sure to remove the iPod/iPhone from its case. Make sure to align your iPod/iPhone with the connector when inserting.

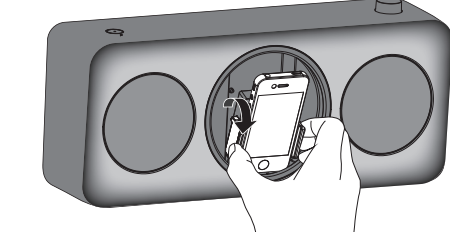


3 Push the side holder inwards to hold the iPod/iPhone and gently push the dock back inside.

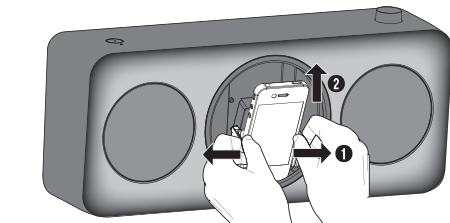


Removing an iPod/iPhone

1 Hold the side holder and gently pull out the dock.



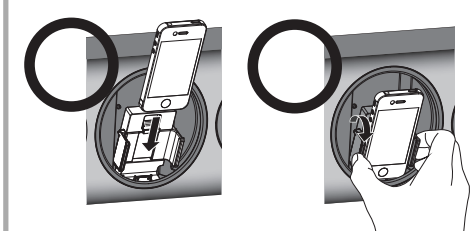
2 Push the side holder outwards and carefully remove the iPod/iPhone.



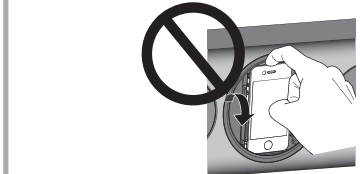
CAUTION!

To prevent damage to the iPod/iPhone

Make sure to pull out the dock before inserting or removing the iPod/iPhone.
Hold the side holder to pull out the dock when removing the iPod/iPhone.



Do not pull out the dock with the iPod/iPhone.



Do not remove the iPod/iPhone when it is in horizontal position.



Basic playback

1 Press [⏻] to turn on the system.

2 Insert the iPod/iPhone.

Status indicator: Green

3 Press [▶/⏮] to start playback.

Pause playback	Press [▶/⏮]. Press again to continue playback.
Skip track	Press [◀◀] or [▶▶].
Search track	Press and hold [◀◀] or [▶▶].
View iPod menu	Press [iPod MENU].
Select an item	Press [▲, ▼] and then press [OK].

Note:

- After you insert the iPod/iPhone, the system will check the connection and the green indicator blinks.
- Depending on the model, it may be necessary to remove the iPod/iPhone and select the album, artist, etc. on the iPod/iPhone.
- The system automatically switches on when you connect an iPod/iPhone that is in playback mode (except for some models).
- Operation results may vary depending on the iPod/iPhone models.
- Read the User Guide of the iPod/iPhone for the operating instructions.

Compatible iPod/iPhone (as of February 2012)

Update your iPod/iPhone with the latest software before using this system.

iPod touch

1st, 2nd, 3rd and 4th generation

iPod nano

2nd, 3rd, 4th, 5th and 6th generation

iPod classic

iPhone 4S / iPhone 4 / iPhone 3GS / iPhone 3G / iPhone

For up to date compatibility information, refer to <http://panasonic.jp/support/global/cs/>

Charging an iPod/iPhone

An iPod/iPhone is charged automatically when connected to the system (even when the system is in standby mode).
• See the iPod/iPhone display for its battery charging status.
• Disconnect the iPod/iPhone if it is not used for an extended period of time after charging is complete.
• Charging stops when the battery is fully charged. The battery will deplete naturally.

Auto off function

The system automatically switches off if there is no audio input and when you do not use it for approximately 30 minutes.

1 Press [iPod/AUX] to select AUX mode.

Status indicator: Off

2 Press and hold [OK].

On (default) ↔ Off

On: The green status indicator blinks 1 time, followed by the amber status indicator blinking 2 times.
Off: The green status indicator blinks 1 time, followed by the amber status indicator blinking 1 time.

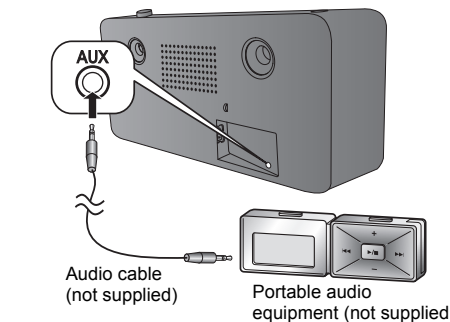
Note:
1 minute before the system switches off, the power indicator blinks.

Using the auxiliary input

You can connect portable audio equipment and listen to the audio through this system.

Preparation

Switch off the equalizer (if any) of the portable audio equipment to prevent sound distortion.
Decrease the volume of the system and the portable audio equipment before you connect or disconnect the portable audio equipment.



Audio cable (not supplied)
Portable audio equipment (not supplied)

1 Connect the portable audio equipment.

Plug type: Ø 3.5 mm (1/8") stereo

2 Press [iPod/AUX] to select AUX mode.

Status indicator: Off

3 Play the portable audio equipment.

Note:

- Read the operating instructions of the portable audio equipment for details.
- Components and cables are sold separately.

To adjust the audio input level

Press [INPUT LEVEL].

Normal (default) ↔ High

Note:

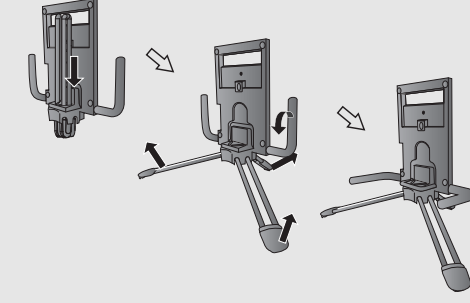
- Select "High" if the output level is too low even when you have increased the volume.
- Select "Normal" if there are abnormalities or the sound is distorted during "High" input level.

ESPAÑOL

Guía introductoria

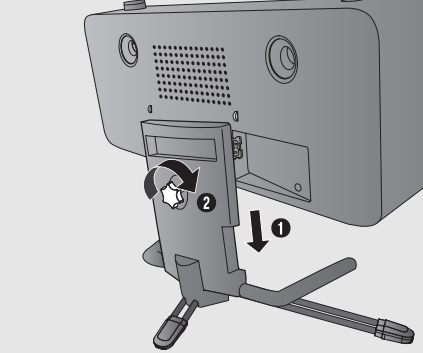
Cómo realizar las conexiones

1 Prepare la base de colocación.

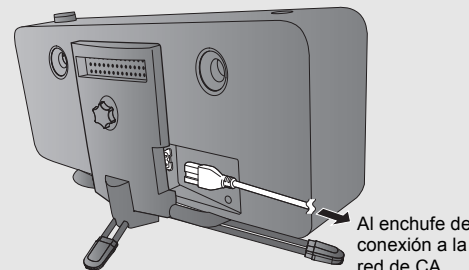


2 Instale la unidad en la base de colocación.

Alinee y ponga la unidad en la base de colocación, gire el tornillo hacia la derecha para asegurar la unidad.



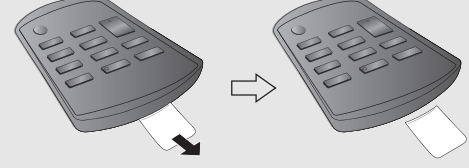
3 Conecte el cable de alimentación de CA.



Cómo preparar el control remoto

Antes de usar

Retire la hoja de aislamiento.



Cómo reemplazar la pila

Reemplace por pila nueva (CR2025 pila de litio).

1 Mientras apriete el tapón, saque el soporte de la pila.

2 Inserte una pila nueva con el signo (+) hacia arriba.

3 Empuje de vuelta a su sitio el soporte de la pila.



Visión general de los controles

Consulte "Overview of controls" para las ilustraciones.

1 Interruptor de alimentación en espera/conectada [⏻], [⏻/⏮]

Pulse este interruptor para cambiar del modo de alimentación conectada al modo de alimentación en espera o viceversa. En el modo de alimentación en espera, la unidad consume una pequeña cantidad de corriente.

2 Ver el menú del iPod

Confirmar selección
Configure o cancele la función de apagado automático

3 Seleccione el modo iPod o AUX

4 Ajuste el nivel de entrada de audio en el modo AUX

5 Seleccione un elemento

6 Ajuste el volumen del sistema

7 Desactive el sonido del sistema

En modo iPod: Los indicadores de estado ámbar y verde parpadean alternativamente.
En modo AUX: El indicador de estado ámbar parpadea continuamente.

Pulse el botón nuevamente para cancelar.
El silenciado del sonido también se cancela cuando usted ajusta el volumen o cuando apaga el sistema.

8 Inicie o pause la reproducción

9 Saltar o buscar pista

10 Indicador de encendido

Encendido: El sistema está encendido

Apagado: El sistema está en modo de espera

11 Indicador de estado

Verde: El modo iPod

Ámbar: Configure o cancele la función de apagado automático

La función de silencio está activada

Apagado: El modo AUX

El indicador de estado verde parpadea cada vez que realiza una operación.

12 Sensor del control remoto

Máximo de rango: 7 m (23 pies) directamente al frente de la unidad principal

13 Base de acoplamiento par iPod/iPhone

Puede girar la base de acoplamiento hacia la derecha o hacia la izquierda para colocarla en posición horizontal para ver el iPod/iPhone en el modo de pantalla ancha.

Reproducción básica

1 Pulse [⏻] para encender la unidad.

2 Inserte el iPod/iPhone.

Indicador de estado: Verde

3 Pulse [▶/⏮] para iniciar la reproducción.

Pausar la reproducción	Pulse [▶/⏮].
Buscar pista	Pulse nuevamente para continuar la reproducción.
Saltar pista	Pulse [◀◀] o [▶▶].
Ver el menú del iPod	Pulse y mantenga pulsado [◀◀] o [▶▶].
Seleccione un elemento	Pulse [iPod MENU].
	Pulse [▲, ▼] y después pulse [OK].

Note:

- Luego de insertar el iPod/iPhone, el sistema revisará la conexión y el indicador verde parpadea.
- Dependiendo del modelo, podría requerirse quitar el iPod/iPhone y elegir el álbum, artista, etc. en el iPod/iPhone.

Compatible con el iPod/iPhone

(a partir de febrero de 2012)

iPod touch

1ª, 2ª, 3ª y 4ª generación

iPod nano

2ª, 3ª, 4ª, 5ª y 6ª generación

iPod classic

iPhone 4S / iPhone 4 / iPhone 3GS / iPhone 3G / iPhone

Cómo cargar un iPod/iPhone

El iPod/iPhone se carga automáticamente cuando está conectado al sistema (incluso cuando el sistema está en modo de alimentación en espera).

- Desconecte el iPod/iPhone para verificar el estado de carga de su batería.
- Desconecte el iPod/iPhone si no se utiliza durante un periodo de tiempo largo después que se hubiera completado la carga.
- La carga se detiene cuando la batería está completamente cargada. La batería se agotará de forma natural.