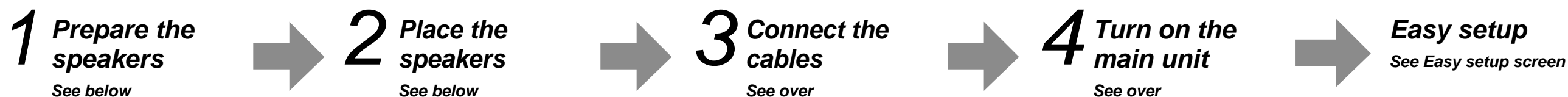


Easy Setting Guide

Blu-ray Disc Home Theater Sound System

Model No. **SC-BT228**

The order of setting

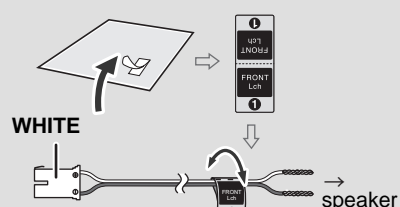


1 Prepare the speakers

Step 1

Label each speaker cable by attaching the numbered sticker at the position indicated in the illustration. Be sure to match the number on each sticker with the circled number in the illustration.

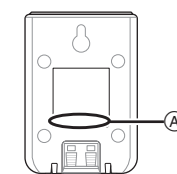
e.g., Front speaker Lch



Refer to the rear label of the speaker before connecting the corresponding cable.
Verify the type of speaker with the label on the rear of the speaker.

Speakers	(A)
Front speakers	FRONT/AVANT
Center speaker	CENTER/CENTRE
Surround speakers	SURROUND/AMBIOPHONIE

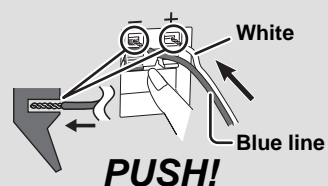
e.g.,



Step 2

Connect the speaker cables.
Insert the wire fully, taking care not to insert beyond the wire insulation.

+: White
-: Blue line



Subwoofer

Center speaker

Front speakers

Surround speakers

PURPLE

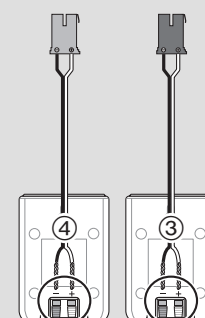
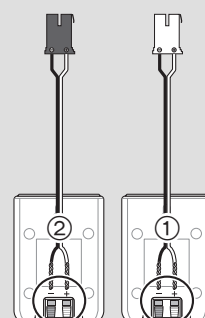
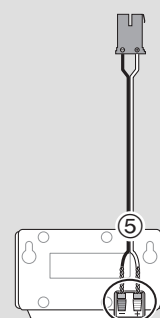
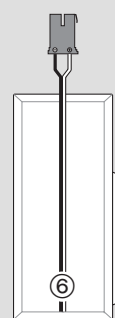
GREEN

Rch
RED

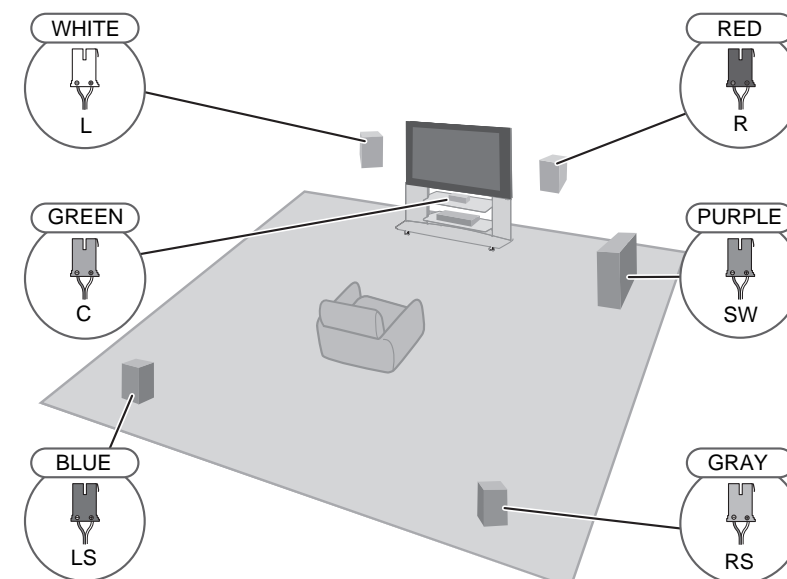
Lch
WHITE

Rch
GRAY

Lch
BLUE

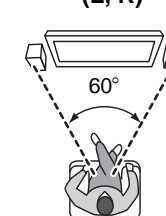


2 Place the speakers

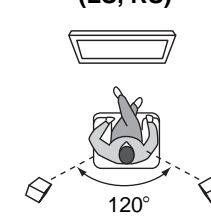


Recommended

Front speakers
(L, R)



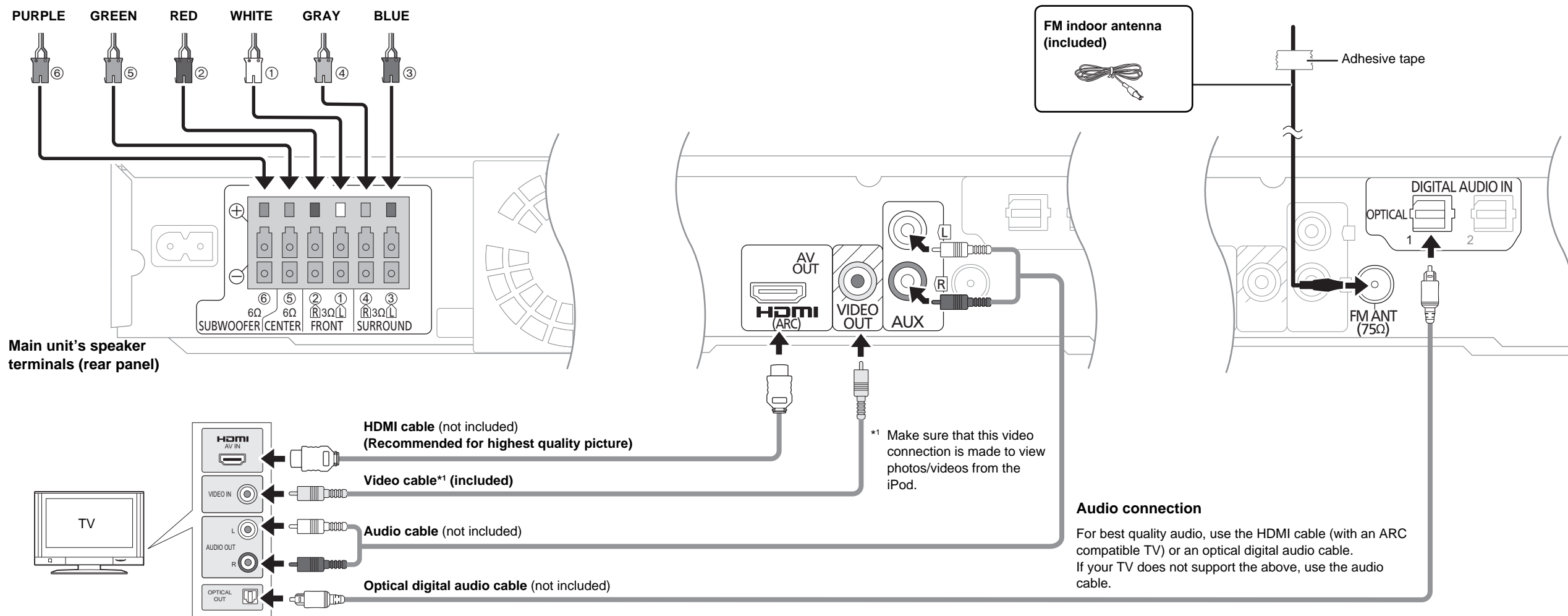
Surround speakers
(LS, RS)



3 Connect the cables

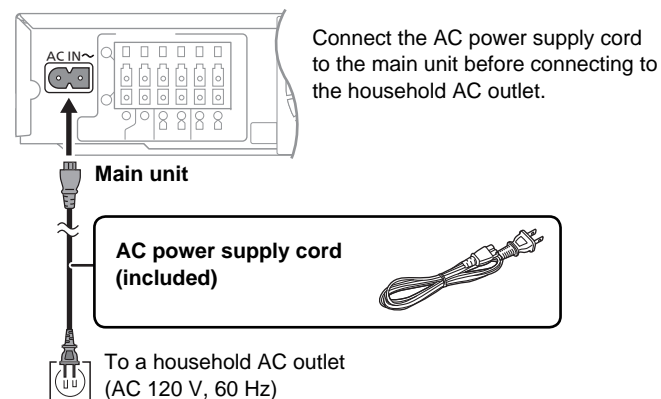
For detailed information, refer to the operating instructions.

Connect the cables by color or by the numbers indicated in the illustration to the appropriate terminals on the rear panel of the unit.



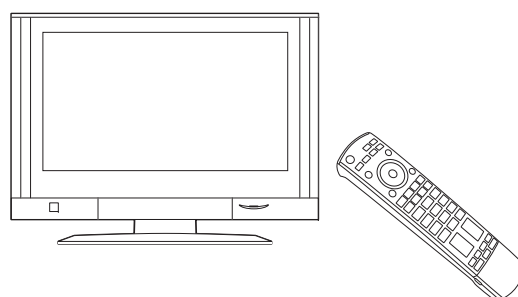
4 Turn on the main unit

1 Connect the AC power supply cord

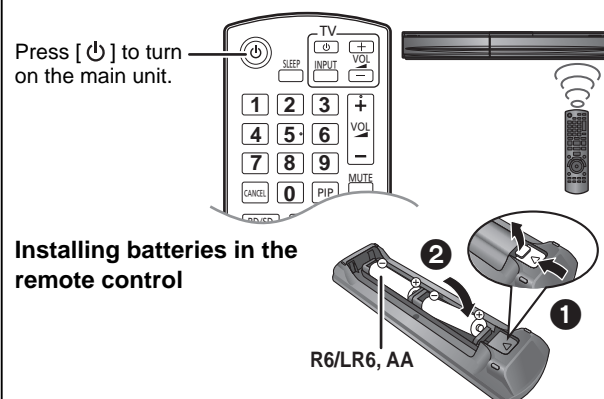


2 Turn on the TV

Turn on your TV and select the appropriate video input mode (e.g., VIDEO 1, AV 1, HDMI, etc.) to suit the connections to this unit.

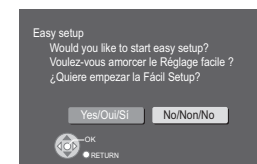


3 Turn on the main unit



4 The Easy setup starts

The on screen display will guide you through the steps.*2



Press [◀, ▶] to select [Yes/Oui/Si].

*2 If you want to restart the Easy setup:
Refer to "STEP 5: Easy setup" in the operating instructions.