

Pacesetter BES
Monogramming Suite
Installation Guide

Copyright

© Copyright 2011 Pulse Microsystems Ltd. All rights reserved.

This Installation Guide is copyrighted by the developer of the software, Pulse Microsystems Ltd. All rights reserved. US Patent Nos. 5 270 939; 5 343 401; 5 430 658; 5 506 784; 5 510 994; 5 541 847; 5 668 730; 5 771 173; 5 809 921; 6 196 146; 6 216 618; 6 390 005; 6 968 255. European Patent Nos. 0545773. Other patents pending.

Information in this document is subject to change without notice.

The software described in this document is furnished under a license agreement and/or nondisclosure agreement. The software may be used or copied only in accordance with the terms of those agreements. No part of this publication and the software may be copied, photocopied, reproduced, translated, or reduced to any electronic medium or machine-readable form without the manufacturer's written permission.

Commercial or industrial use of trademark and copyrighted works (For example, books, paintings, drawings, photos, fanciful characters, and so forth) owned by other companies or persons, for creation of embroidery patterns without permission is illegal and may result in either criminal or civil liability.

Microsoft®, Windows® XP, Windows® Vista, and Windows® 7 are registered trademarks of Microsoft Corporation. All other product names are copyrighted and registered trademarks or trademarks of their respective holders. All computer and software names identified by TM or tm are trademarks of their respective manufacturers.

Installing the Software

Welcome to the Pacesetter BES Monogramming Suite for embroidery machines.

This Installation Guide gives you some basic information about Pacesetter BES Monogramming Suite (such as the minimum systems requirements) and also instructions on how to install and activate the program.

System Requirements

The following points outline the minimum requirements needed to run Pacesetter BES Monogramming Workshop. Note, however, that exceeding these minimum specifications will give better software performance.



Specifications are subject to change without prior notice. For additional information on setup and system requirements, contact your distributor.

Minimum System Requirements:

- Genuine Intel Pentium IV, 2GHz PC computer (or higher) with a CD-ROM drive
- Monitor 1024x768 video resolution with 16-bit color display (or higher)
- Microsoft® Windows® XP/Vista/7 operating system
- 1 gigabyte of RAM
- Minimum 1 gigabyte hard disk drive space available
- Mouse

For assistance, please contact Brother Customer service: either by telephone at 1-877-276-8437, or by email at hadsupp@brother.com. Please enter the product name in the subject line of the email.

The Software Activation Number

In your Pacesetter BES Monogramming Suite package, you will have been given a software activation serial number. Use this number to activate your software once it is installed.

Please note that, while this is a single user license, it does allow you to activate the software on two computers that you own and operate.

Installing Pacesetter BES Monogramming Suite

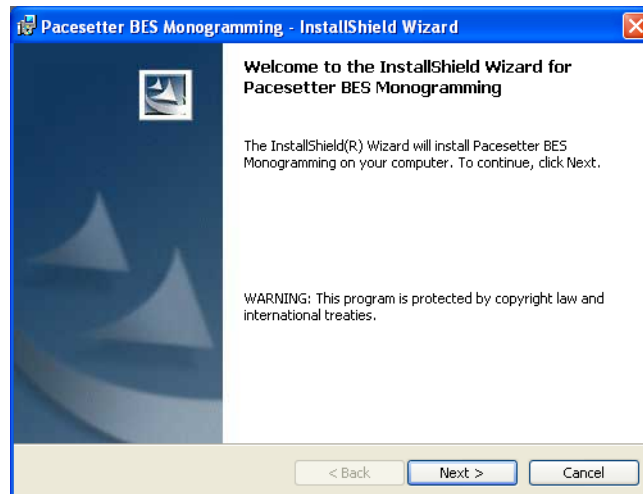


You must be running Windows® XP/Vista/7 to install BES Monogramming Suite.

To install Pacesetter BES Monogramming Suite:

- 1 Insert the Pacesetter BES Monogramming Suite CD-ROM into the computer's CD drive.
- 2 Wait for the AutoRun Screen.
- 3 Click the Install button.

You see the InstallShield introductory screen.



- 4 Click Next to proceed with the installation.
You see the License Agreement dialog.
- 5 Check the radio button next to "I accept the terms in the license agreement" and click next to continue.
- 6 Follow the instructions on each screen; the InstallShield Wizard will then Install the software on your computer.
The Pacesetter icon will now appear on your desktop.

Activating Pacesetter BES Monogramming Suite

In order to use the software (once it is installed), you must activate it first. You can choose one of the following options to obtain a license:

- Automatic authentication via an Internet connection using only the serial number that came with the package.
- For a computer that does not have an Internet connection, you can activate the software manually, using the activation serial number and a Site Code generated by the software. This requires that you obtain a Site Key from Technical Support. For details, see “Activating the software without an Internet Connection.”

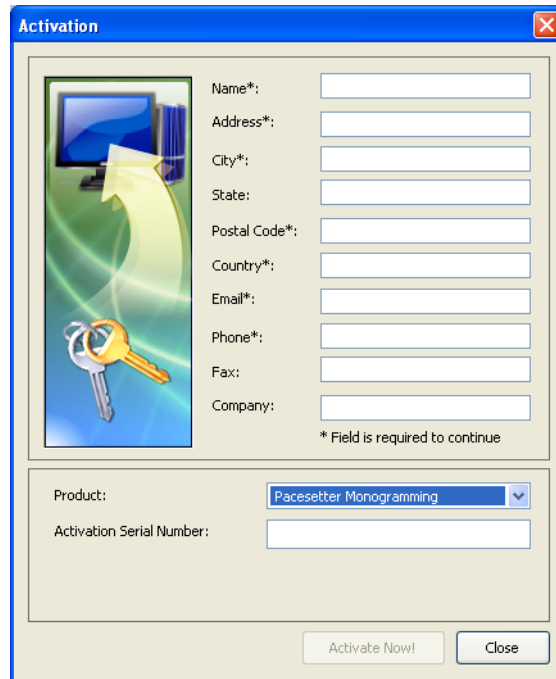
Activating the software via the Internet

If the computer on which you are installing Pacesetter BES Monogramming Suite has an Internet connection, all you need for your activation is the activation serial number that came with your copy of the software.

To obtain an activation over the Internet:

- 1 Do one of the following:
 - ♦ Double-click the Pacesetter BES Monogramming Suite Icon on your desktop.
 - ♦ Choose Start—All Programs—Pacesetter—Pacesetter BES Monogramming.

You see the activation screen.



Activation

Name*:

Address*:

City*:

State:

Postal Code*:

Country*:

Email*:

Phone*:

Fax:

Company:

* Field is required to continue

Product:

Activation Serial Number:

Activate Now! Close

- 2 Fill in the required activation information in the appropriate fields.



Fields marked with an asterisk (*) are required - your software will not be activated otherwise.

- 3 Type your individual activation serial number (that came with your copy of Pacesetter BES Monogramming Suite) into the Activation Serial Number field.
- 4 Click the Activate Now button on the dialog.
Pacesetter BES Monogramming Suite will open.

Activating the software without an Internet Connection

If you have installed the software on a computer that does not have an Internet connection, you will need a site key (in addition to the activation serial number) to complete the activation.

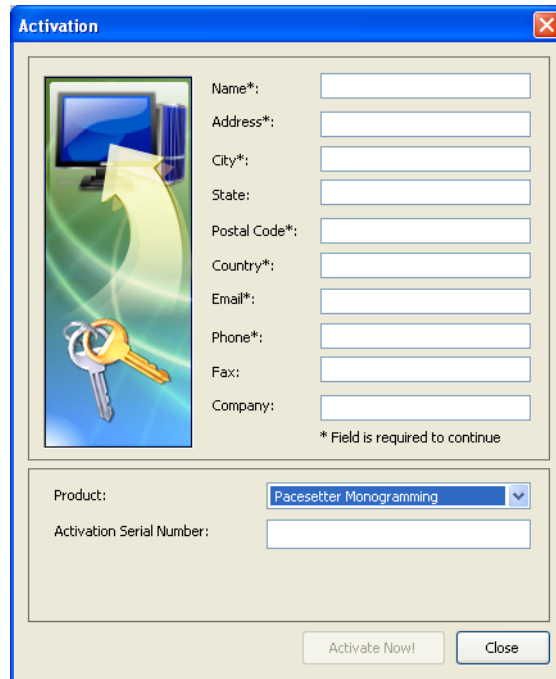
To obtain your Site Key, please contact technical support; either by telephone at 1-877-276-8437, or by email at hadsupp@brother.com.

Please enter the product name in the subject line of the email.

To obtain an activation without an internet connection:

- 1 Do one of the following:
 - ♦ Double-click the Pacesetter BES Monogramming Suite Icon on your desktop.
 - ♦ Choose Start—All Programs—Pacesetter—Pacesetter BES Monogramming.

You see the activation screen.



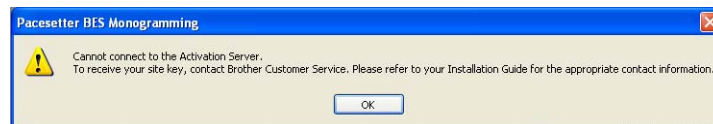
The 'Activation' dialog box contains a graphic on the left showing a computer monitor, a yellow arrow pointing to the right, and a key. On the right, there are text input fields for 'Name*', 'Address*', 'City*', 'State', 'Postal Code*', 'Country*', 'Email*', 'Phone*', 'Fax', and 'Company'. A note at the bottom right of this section states '* Field is required to continue'. Below these fields, there is a 'Product:' dropdown menu currently set to 'Pacesetter Monogramming' and an 'Activation Serial Number:' text field. At the bottom of the dialog are 'Activate Now!' and 'Close' buttons.

- 2 Fill in the required activation information in the appropriate fields.



Fields marked with an asterisk (*) are required - your software will not be activated otherwise.

- 3 Type your individual activation serial number (that came with your copy of Pacesetter BES Monogramming Suite) into the serial number field.
- 4 Click the Activate Now button on the dialog.
You see the following warning message:



5 Contact Technical support; they will give you a Site Key.



For assistance, please contact Brother Customer service:
either by telephone at 1-877-276-8437, or by email at
hadsupp@brother.com.
Please enter the product name in the subject line of the
email.

6 Click OK to dismiss the warning message.

*The Activation wizard dialog now has new field for the site
key.*

A screenshot of the 'Activation' dialog box. It features a blue title bar with a close button. On the left, there is a graphic of a computer monitor and a key. To the right of the graphic are input fields for Name*, Address*, City*, State, Postal Code*, Country*, Email*, Phone*, Fax, and Company. Below these fields is a note: '* Field is required to continue'. At the bottom, there is a section for 'Product' (set to 'Pacesetter Monogramming'), 'Activation Serial Number', 'Site Code' (with the value '5B49-809E-6B9C' highlighted), and 'Site Key'. At the very bottom are 'Activate Now!' and 'Close' buttons.

7 Enter the site key.

8 Click the Activate Now button.

Pacesetter BES Monogramming Suite will open.