

# CAMEDIA

**USB Reader/Writer**

**MAUSB-100**

**REFERENCE MANUAL**

**OLYMPUS®**

# Introduction

Thank you for purchasing our product.

This product is exclusively for reading and writing data to an xD-Picture Card (hereinafter referred to as "card"). You can transfer large amounts of data to and from the card quickly and easily using a computer equipped with a USB port (IBM PC/AT compatible and Macintosh).

Before using this product, read this manual and the separate "Precautions" document carefully.

This manual assumes that the user is familiar with computer operation and operating systems. For information about computers, optional devices, operating software, and so on, refer to the manuals supplied with the respective products.

## Main features

- **Compatible with xD-Picture Card.**

You can transfer data from a digital camera compatible with xD-Picture Card.

- **Supports USB 2.0 interface, USB Mass Storage Class.**

The MAUSB-100 supports the high-speed USB 2.0 interface, which allows even faster data transfer than USB 1.1.\*1 All you have to do is connect the MAUSB-100 to your computer and the inserted xD-Picture Card will be recognized as a Removable Disk by the computer. There's no need to install the device driver on the computer.\*2 You can quickly transfer image data to the computer or write data from the computer to the MAUSB-100.

- **Compact, lightweight stick-type device.**

The attached protective cap allows you to easily carry the MAUSB-100 with a card inserted. The write-protect switch prevents stored data from being deleted by mistake.

- **Supports Hot Plug providing USB Bus Power for USB connection.**

You can connect/disconnect the MAUSB-100 without turning off the computer. Since power is supplied by the connecting computer via a USB interface, a separate power supply (such as an AC adapter) is not required.

- **Compatible with both Windows and Macintosh OS.**

- **Includes convenient xD-Picture Card utility software.**

By using the provided utility software, you can format the mounted card on your computer so that it is equivalent to the formatting used by an Olympus digital camera.\*3

\*1 A computer supporting USB 2.0 is required. Only USB 1.1 is available for computers that do not support USB 2.0.

\*2 For Windows 98/98 SE, you have to install the device driver from the provided CD-ROM.

\*3 Compatible with Windows only.

## For customers in the USA

### Declaration of Conformity

Model Number : MAUSB-100

Trade Name : OLYMPUS

Responsible Party : Olympus America Inc.

Address : 2 Corporate Center Drive, Melville, New York 11747-3157 U.S.A.

Telephone Number : 631-844-5000

 Tested To Comply With FCC Standards  
FOR HOME OR OFFICE USE

This device complies with Part 15 of the FCC rules. Operation is subject to the following two conditions:

(1) This device may not cause harmful interference.

(2) This device must accept any interference received, including interference that may cause undesired operation.

## For customers in Canada


This Class B digital apparatus meets all requirements of the Canadian Interference-Causing Equipment Regulations.

## For customers in Europe



"CE" mark indicates that this product complies with the European requirements for safety, health, environment and customer protection.

## Trademarks

- Microsoft and Windows are either registered trademarks or trademarks of Microsoft Corporation in the United States and/or other countries.
- IBM PC/AT are registered trademarks, trademarks and/or product names of International Business Machines Corporation in the United States, other countries or both.
- Apple, Mac, Macintosh, Mac OS, Power Mac, PowerBook, iMac, iBook, eMac, QuickTime are trademarks of Apple Computer, Inc., registered in the U.S. and other countries.
- xD-Picture Card  and other company and product names are registered trademarks and/or trademarks of their respective owners in Japan and/or other countries.

# Contents

Introduction .....	2
Contents .....	3
What's included .....	4
Names of parts .....	4
Before getting started .....	5

## Windows 98/98 SE

How to install	1. Turn on the computer .....	7
	2. Install the device driver/utility software .....	7
Operating the MAUSB-100	1. Inserting a card .....	10
	2. Setting the write-protect switch .....	10
	3. Connecting to the computer .....	11
	4. Removing a card .....	13
	5. Disconnecting the MAUSB-100 .....	13
	6. Copying files from/to a card .....	14
	7. Formatting a card .....	15
How to uninstall the device driver/utility software .....		16

## Windows Me/2000/XP

How to install	1. Turn on the computer .....	18
	2. Install the utility software .....	18
Operating the MAUSB-100	1. Inserting a card .....	21
	2. Setting the write-protect switch .....	21
	3. Connecting to the computer .....	22
	4. Removing a card .....	24
	5. Disconnecting the MAUSB-100 .....	25
	6. Copying files from/to a card .....	26
	7. Formatting a card .....	27
How to uninstall the utility software .....		28

## Mac OS 9

How to install	1. Turn on the computer .....	30
Operating the MAUSB-100	1. Inserting a card .....	31
	2. Setting the write-protect switch .....	31
	3. Connecting to the computer .....	32
	4. Removing a card .....	33
	5. Disconnecting the MAUSB-100 .....	33
	6. Copying files from/to a card .....	34
	7. Formatting a card .....	34

## Mac OS X

How to install	1. Turn on the computer .....	35
Operating the MAUSB-100	1. Inserting a card .....	36
	2. Setting the write-protect switch .....	36
	3. Connecting to the computer .....	37
	4. Removing a card .....	38
	5. Disconnecting the MAUSB-100 .....	38
	6. Copying files from/to a card .....	39
	7. Formatting a card .....	39

Using the provided utility software [xDFormat] (compatible with Windows 98/98 SE/Me/2000/XP) .....	40
Troubleshooting .....	42
Specifications .....	44
Glossary of terms .....	45

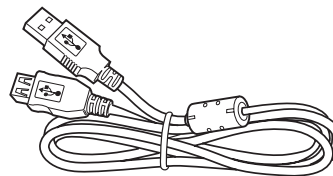
# What's included

Make sure all the following items are included.

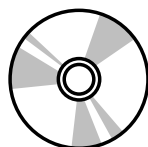
If any items are missing, inform the shop from where you purchased this product right away.



**MAUSB-100**

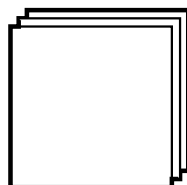


**USB extension cable**



**CD-ROM**

(Device driver/Utility software/  
Reference manual (this manual)/  
CAMEDIA Master 4.1 (software  
for editing images)

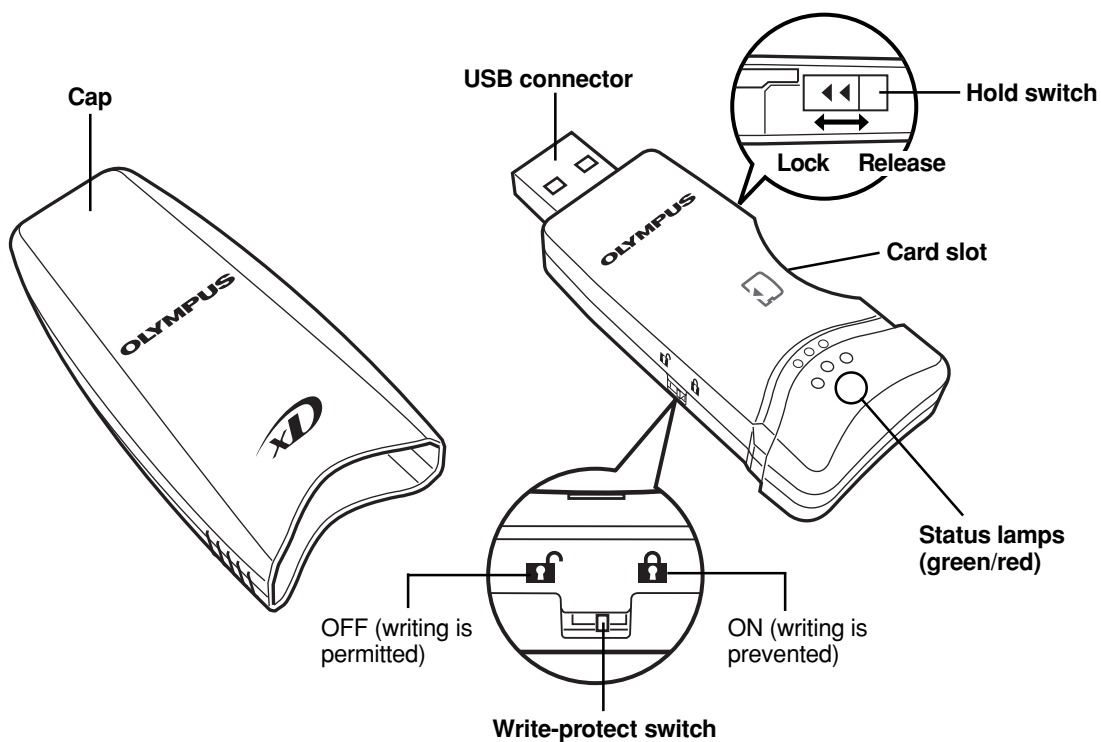


**Quick start guides**



**"Precautions" document**

# Names of parts



# Before getting started

## System requirements

---

Your computer must conform to the following minimum standards in order to use it with the MAUSB-100.

- **Compatible operating systems**

- IBM PC/AT compatible:**

- Pre-installed Windows 98/98 SE/Me/2000 Professional (referred to as Windows 2000 in this manual)/XP

- Power Mac G3/G4, PowerBook G3/G4, iMac/iBook/eMac series:**

- Pre-installed Mac OS 9.0 - 9.2.2/X (v10.1.2 or later)

- USB interface compliant with USB Ver. 2.0 or Ver. 1.1
- Equipped with CD-ROM drive (required for device driver/utility software installation)

## Supported cards

---

xD-Picture Card

16MB/32MB/64MB/128MB/256MB/512MB (3.3 V)

## Precautions

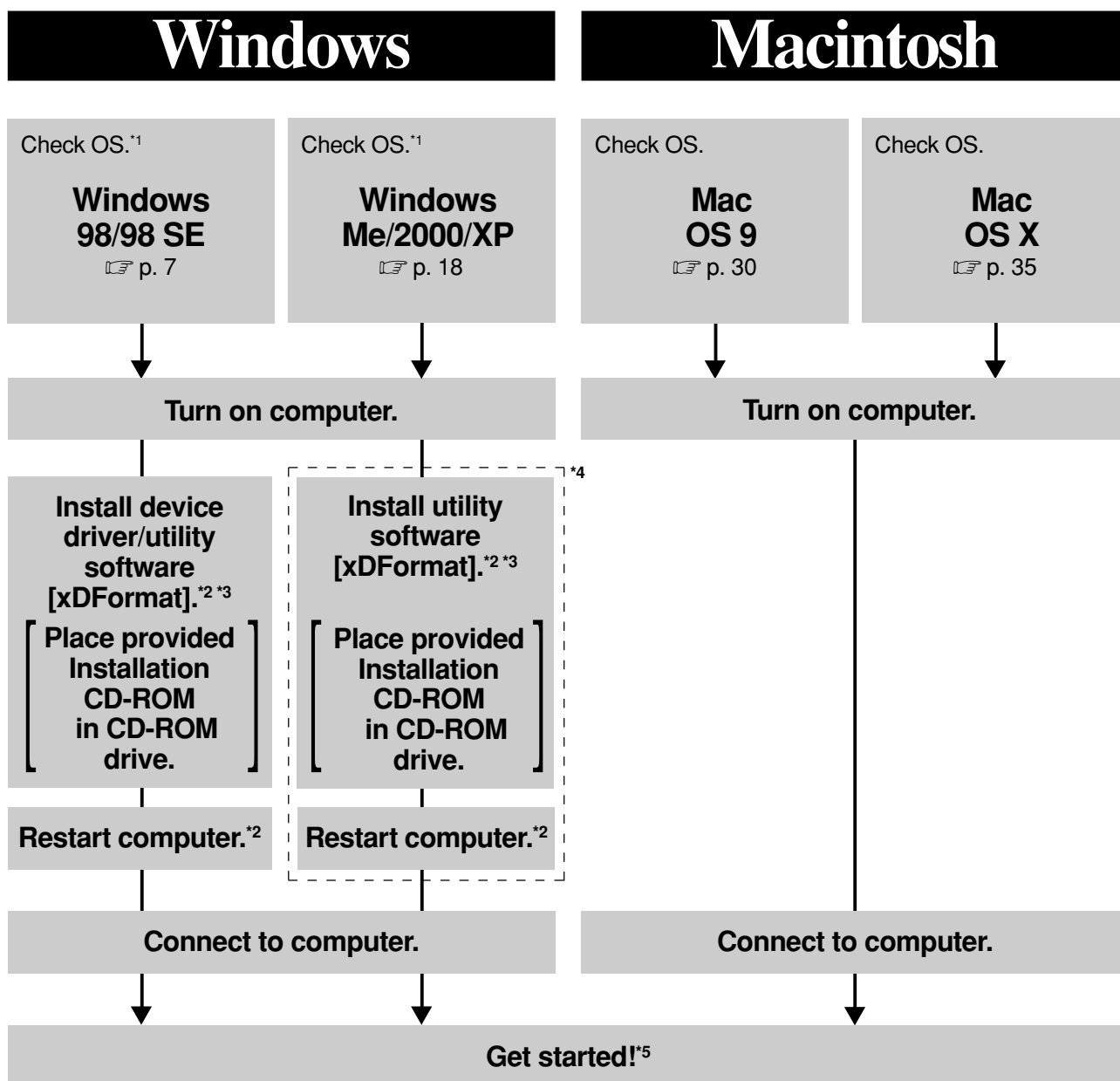
---

- Before using the MAUSB-100, make sure there is adequate space around the computer so that the MAUSB-100 can be connected properly. If there is not enough space for MAUSB-100 around the computer to allow a direct connection, use the provided USB extension cable.
- The MAUSB-100 may not be compatible with your computer hardware, software, or device drivers.
- If you connect the MAUSB-100 to a PC via a USB hub, keyboard, or display, the MAUSB-100 may not function properly.  
In this case, connect the MAUSB-100 directly to the computer's USB port or use the provided USB extension cable.
- Versions of Windows 98/Me upgraded from Windows 3.1/95, or Windows 2000 upgraded from Windows 95/NT 4.0/NT 3.51 may not work properly. In this case, you may need to reinstall your OS.
- Do not release the hold switch, remove the card, disconnect the MAUSB-100 or set the write-protect switch while the red status lamp is lit. Doing so may destroy data on the card or damage the card.
- If you do not use the provided utility software when formatting a card in the MAUSB-100, the card may not be recognized by the digital camera. Re-format the card with the digital camera or with the connected computer using the provided utility software.  
(Refer to your digital camera's instruction manual for details on formatting.)  
\* The provided utility software is not compatible with Mac OS. If you are using a Macintosh, format the card with your digital camera.
- The MAUSB-100 does not support a computer power-saving functions. Turn off the power-saving function before you use the MAUSB-100 with your computer.
- It is not possible to connect two or more MAUSB-100s to a single PC at the same time.
- Do not swing the strap while attaching it to the MAUSB-100. Avoid banging the MAUSB-100 against hard objects.
- To remove the cap, pull out the MAUSB-100 while holding down both sides of the cap.



## Getting started

The installation procedure varies depending on the operating system you are using on your computer. Follow the correct procedure for your operating system.



# Windows 98/98 SE

## How to install

Also refer to your computer's user manual and the manuals for any optional devices you are using.

### 1 Turn on the computer

<98/98 SE ♦ Install>

Turn on your computer's power (and connected devices) to start Windows 98/98 SE.

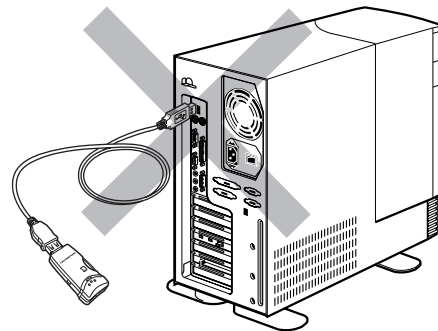
### 2 Install the device driver/utility software <98/98 SE ♦ Install>

When using the MAUSB-100 for the first time, you must first install the device driver and utility software included on the provided CD-ROM.

#### Note

**Do NOT connect the MAUSB-100 to the computer until installation of the device driver/utility software is completed.**

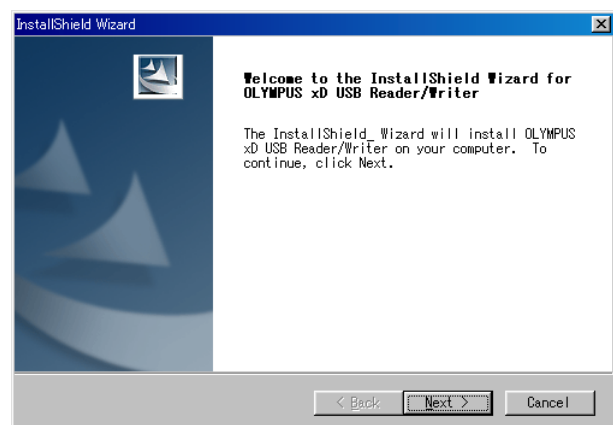
⚠ Do not connect to the computer before installation.



Before installation, make sure that the computer is turned on, then follow the steps below to install the device driver and utility software on your computer.

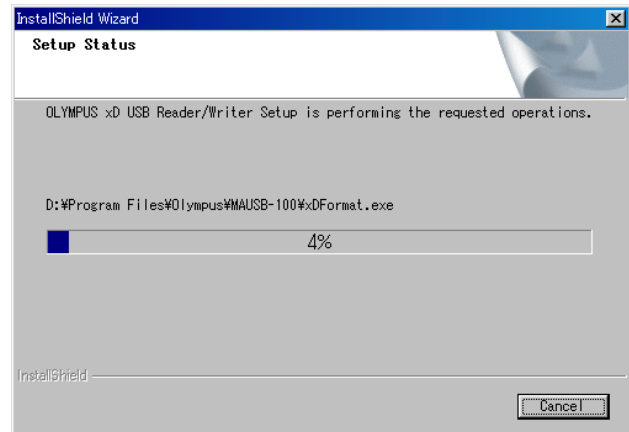
- Note that the windows shown below may look different on your computer, depending on how your operating system is configured.

1. Turn on the computer, then place the provided CD-ROM into the computer's CD-ROM drive.
2. When the CD-ROM is recognized, the InstallShield setup window is displayed for a few seconds. Then, the installation window appears automatically.
3. Click the [Next] button.
  - If the window at right does not appear, refer to "If the installation window does not appear when the CD-ROM is loaded" (p. 9).
  - If you want to cancel the installation, click [Cancel].



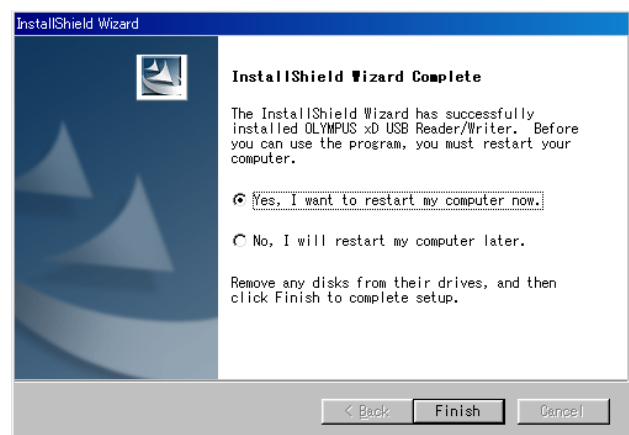
4. During installation, the window at right appears.

- The installation time may vary, depending on your computer.



5. When the device driver/utility software installation is complete, the window at right appears. Select [Yes, I want to restart my computer now.] if you are ready, then click [Finish].

- The computer restarts.



The device driver/utility software is now installed.

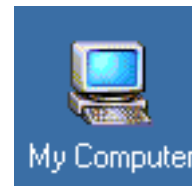
Once the device driver/utility software has been installed, the MAUSB-100 will be recognized automatically whenever it is plugged into the computer. (Remove the CD-ROM from the CD-ROM drive and store it in a safe place.)



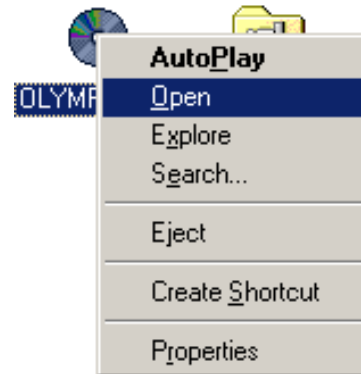
**If the installation window does not appear when the CD-ROM is loaded**

Follow the steps below to specify the file and start installing.

1. **Double-click** [My Computer].



2. **Right-click** [OLYMPUS]. Select [Open] from the pop-up menu.



3. **Double-click** [MAUSB\_100].



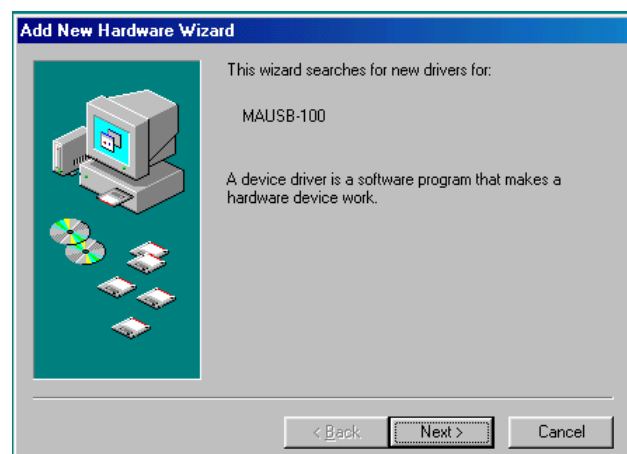
4. **Double-click** [Setup.exe].

- The [InstallShield Wizard] window appears. Start installing by following “2 Install the device driver/utility software” (p. 7).

**When the [Add New Hardware Wizard] window appears**

If you connect the MAUSB-100 to the computer before installing the device driver and utility software, the [Add New Hardware Wizard] window appears. In this case, follow the steps below.

1. Disconnect the MAUSB-100 from the computer (p. 13).
2. Click the [Cancel] button.
3. Place the CD-ROM into the CD-ROM drive. Follow the instructions in “2 Install the device driver/utility software” (p. 7).



# Operating the MAUSB-100

The operating procedures for the MAUSB-100 under Windows 98/98 SE are described below.

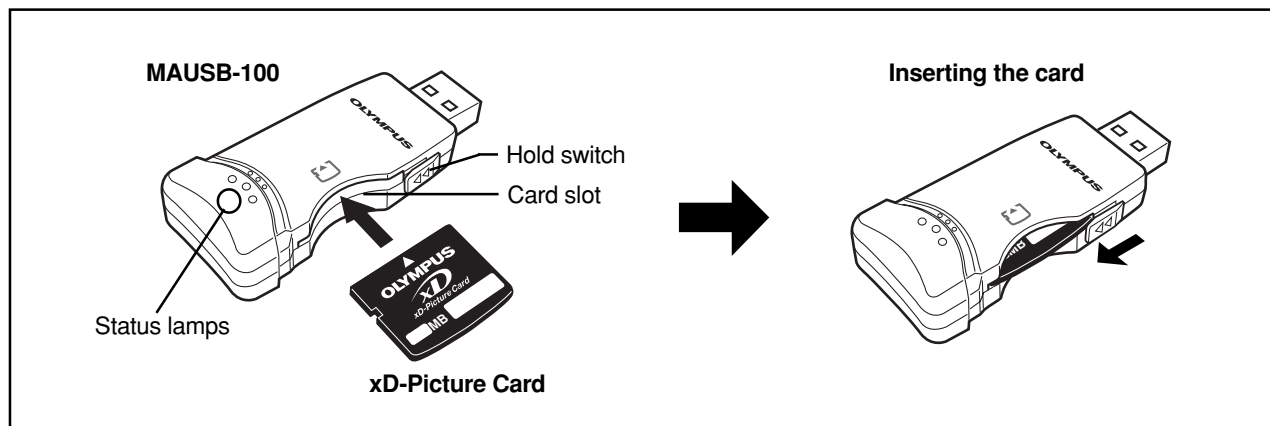
## 1 Inserting a card

<98/98 SE ♦ Operation>

1. Make sure that the hold switch is released, then insert a card into the MAUSB-100's card slot.

Make sure the card is level and that the gold-colored contact area is facing down. Insert the card all the way into the slot.

2. Lock the hold switch.



### Notes

- Make sure that the card is facing the right way.
- Do NOT insert the card at an angle. Forcing a card in diagonally may damage the card and/or the MAUSB-100.
- Be sure to lock the hold switch after inserting the card. The computer will not be able to recognize the card if the hold switch is released.

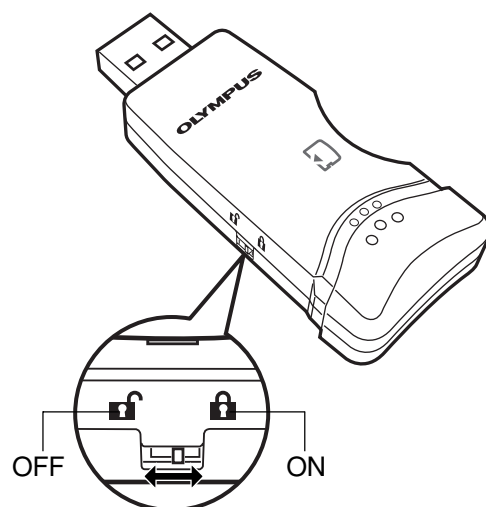
## 2 Setting the write-protect switch

<98/98 SE ♦ Operation>

Before connecting the MAUSB-100 to your computer, set the write-protect switch to ON or OFF as required.

**ON** : When you want to protect data stored on the inserted card from being deleted by mistake. The stored data cannot be changed, moved or deleted from the card, and the card cannot be written to or formatted.

**OFF** : When you want to change, move or delete the data stored on the inserted card, or want to write to or format the card.



### Note


If you have important data stored on the card, set the write-protect switch to ON to prevent accidental deletion.

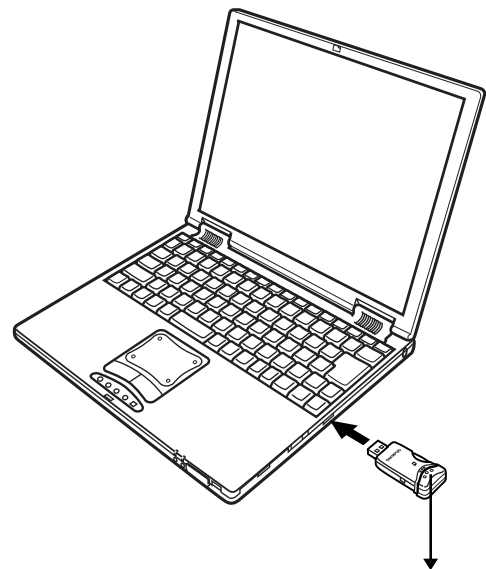
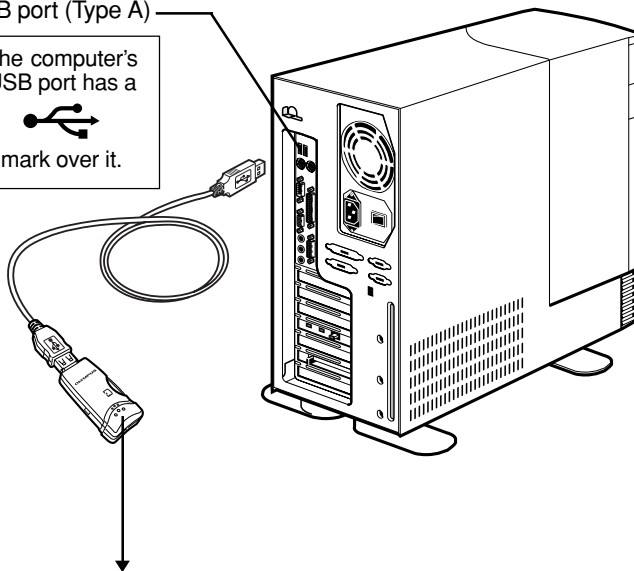
Connect the MAUSB-100's connector to the USB port on your computer. (You can plug in the USB connector while the computer is in use.)

### Notes

- Be sure to connect the MAUSB-100 to your computer AFTER installing the device driver/utility software.
- Make sure the connector is fully inserted.
- When inserting the connector, make sure it is oriented correctly (refer to the pictures below). Inserting the connector incorrectly may damage the connector and/or the computer's USB port.
- Make sure there is adequate space around the computer to connect the MAUSB-100 to the computer properly.
- If there is not enough space for the MAUSB-100 around the computer to allow a direct connection, use the provided USB extension cable. Connecting the MAUSB-100 to the computer incorrectly may result in damage to the connector and/or the computer's USB port.
- Do not apply force to the computer's USB port or the MAUSB-100 when removing/inserting a card from/into the MAUSB-100 if it is directly connected to the computer's USB port.

USB port (Type A)

The computer's USB port has a  
  
 mark over it.



### Status lamps

Green status lamp lights : When the MAUSB-100 is connected to the computer and is ready to use.

Red status lamp lights\* : When reading/writing to a card.

\*The status lamps may look in orange as both the green and red status lamps light together.

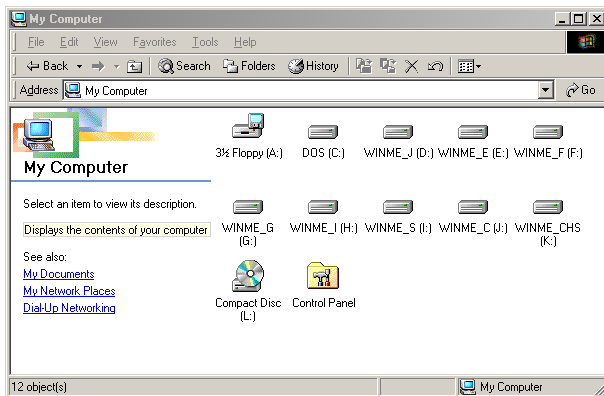
- Do not release the hold switch, remove the card or disconnect the MAUSB-100 from the computer while the red status lamp is lit. Doing so may destroy the data stored on the card.
- The green and red status lamps blink slowly if the card is not recognized correctly. When this happens, follow the instructions in "4 Removing a card" (p. 13) to remove the card from the MAUSB-100, then wipe the contact area with a dry cloth, and insert the card again. If the problem persists, the card may be damaged.

When the MAUSB-100 is connected to your computer, it is recognized as a [Removable Disk] and the green status lamp lights up. You can see a [Removable Disk] icon by opening [My Computer] from the desktop.

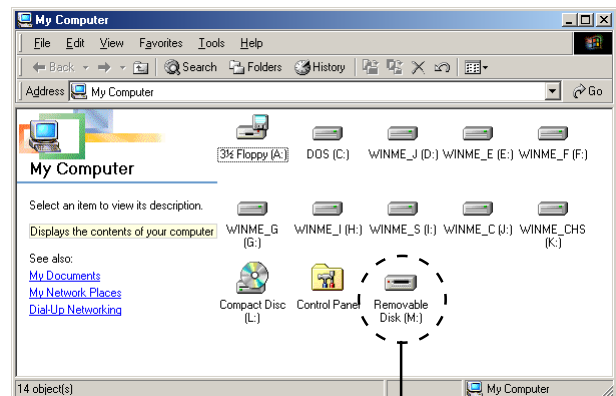
### Note

The drive letter assigned to the MAUSB-100 by the computer may differ depending on how your operating system is configured. Be sure to check the assigned drive letter after you make the connection.

**Before connecting**



**After connecting**



**MAUSB-100**

In this example, the Removable Disk is recognized as the M drive. The drive letter (e.g. [M:], [N:], etc.) used by your computer may differ depending on your computer and/or connected optional devices.

## 4 Removing a card

<98/98 SE ♦ Operation>

Close all software programs that are using data on the card (e.g. Explorer, graphics applications), then follow the steps below.

### Attention!

- If you do not follow the steps below, the data on the card may be damaged.
- Do not apply force to the computer's USB port or the MAUSB-100 when removing/inserting a card from/into the MAUSB-100 if it is directly connected to the computer's USB port.

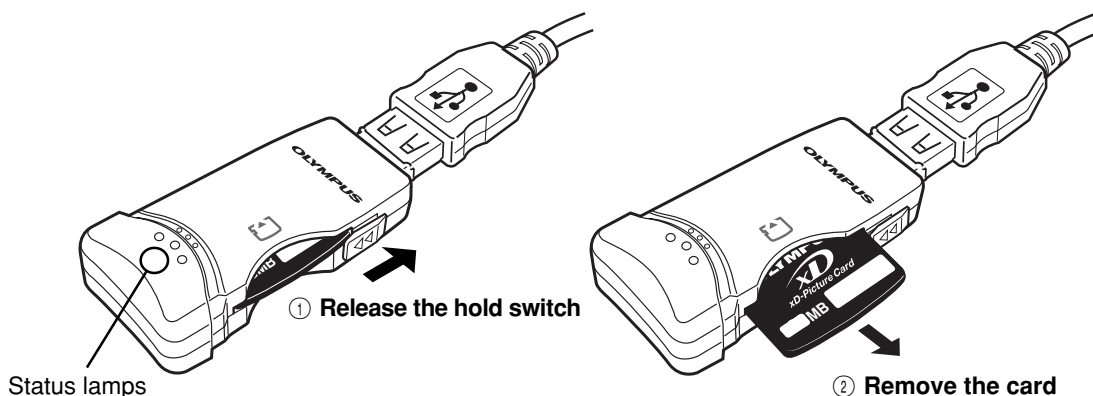
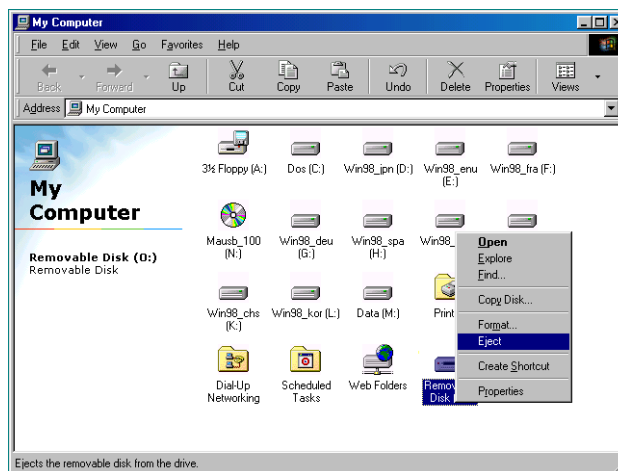
1. **Double-click** [My Computer] on the desktop.

2. **Right-click** the corresponding [Removable Disk] icon, then click [Eject] in the pop-up menu.

- The card will not be ejected when [Eject] is clicked in this step.

3. Make sure that the red status lamp is **NOT** on.

4. Release the hold switch, then pull the card out of the card slot as shown.



### Note

- NEVER release the hold switch, remove the card or disconnect the MAUSB-100 from the computer while the red status lamp is lit. Doing so may destroy the data on the card or the card itself, or cause the computer to malfunction.
- Be careful when removing the card as it can get hot after extended use. Take special care not to touch the card's terminals.

## 5 Disconnecting the MAUSB-100

<98/98 SE ♦ Operation>

Close all software programs that are using the card (e. g. Explorer, graphics applications), then follow the steps below.

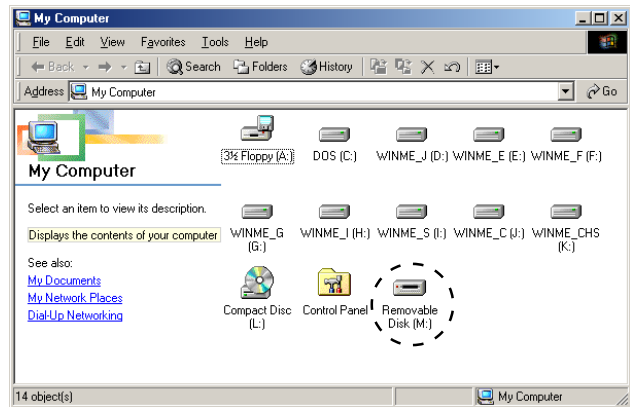
1. If a card is already inserted in the MAUSB-100, follow steps 1 - 3 in "4 Removing a card".

2. Unplug the MAUSB-100 from the computer's USB port.

## 6 Copying files from/to a card

<98/98 SE ♦ Operation>

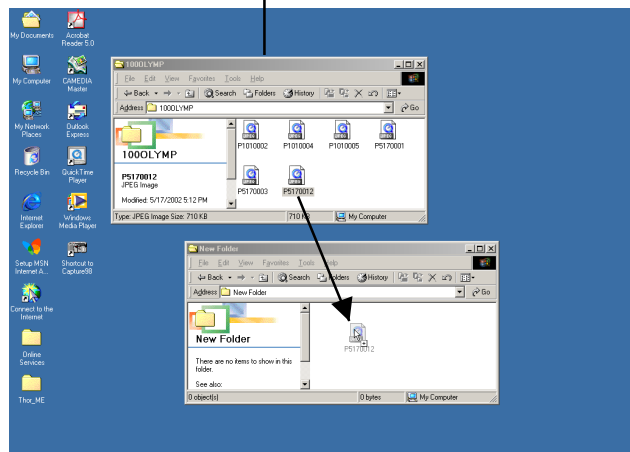
1. Insert a card into the MAUSB-100 and connect it to the computer's USB port.
2. **Double-click** [My Computer] from the desktop.
3. To view the contents of a card, **double-click** the corresponding [Removable Disk] icon.
  - Double-clicking the [Removable Disk] icon will display the directory and the list of image files on the inserted card.



In this example, the Removable Disk is recognized as the M drive. The drive letter (e.g. [M:], [N:], etc.) used by your computer may differ depending on your computer and/or connected optional devices.

4. **Drag** the file icons you want to copy and **drop** them onto the destination folder.
  - The process is the same as copying files from a floppy disk.
  - It is also possible to move files to another folder, erase files, or write data from another folder. (Data cannot be written to or erased from a card when the write-protect switch is set to the ON position.)

The window containing the files to be copied



### Drag & Drop

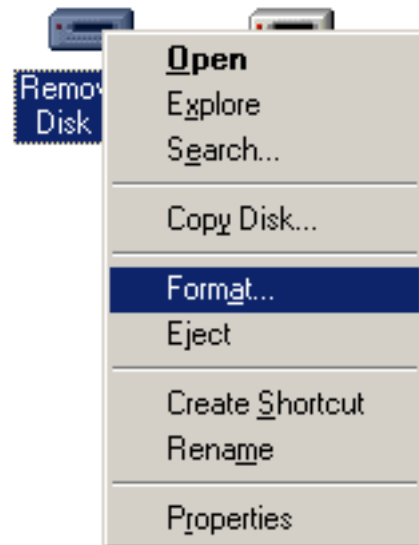
To perform a drag and drop, press and hold the left mouse button over the selected file(s), then move the mouse (drag) and release the button at the place where you want to copy (drop).

## Before formatting the card

- To use the card with a digital camera, format the card with the digital camera or with the computer connected to the MAUSB-100 using the provided utility software\*. If you do not use the provided utility software when formatting a card with the connected computer, the card may not be recognized by the digital camera.
- It is not possible to format a card or write, move or erase data on a card when the write-protect switch is set to the ON position. Set the write-protect switch to the OFF position and format the card.
- Formatting erases all data in the card. All important data should be copied to a hard disk, etc. beforehand.

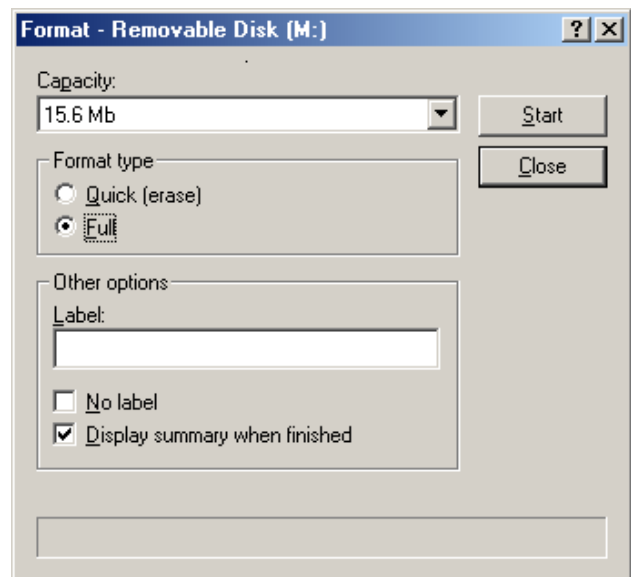
\* See "Using the provided utility software [xDFormat]" (p. 40) for how to use it.

1. **Double-click** [My Computer], then **right-click** on the corresponding [Removable Disk] icon. Select [Format] from the pop-up menu.



2. The dialog box at right appears. Select [Full] under [Format type], then click the [Start] button.

- After formatting is complete, the card is ready for use.



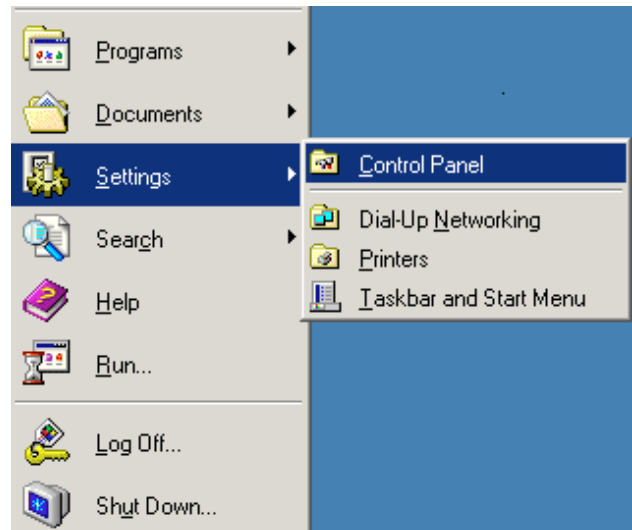
Example shows a 16MB card

## How to uninstall the device driver/utility software <98/98 SE>

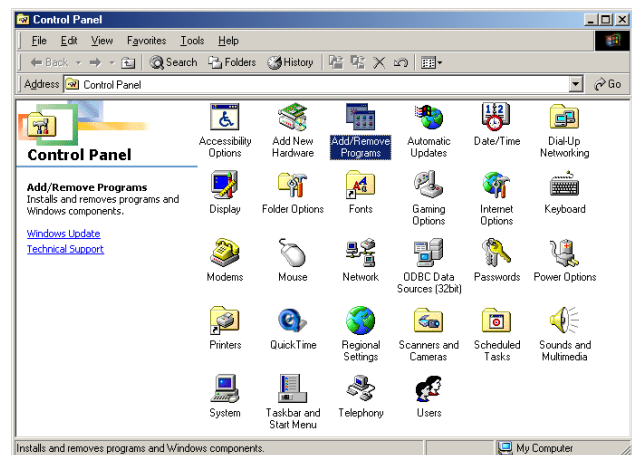
The device driver/utility software can be deleted if it is no longer needed. First make sure that the MAUSB-100 is disconnected from the computer's USB port, then follow the steps below.

- On-screen displays or messages may vary depending on the version of Windows you are using.

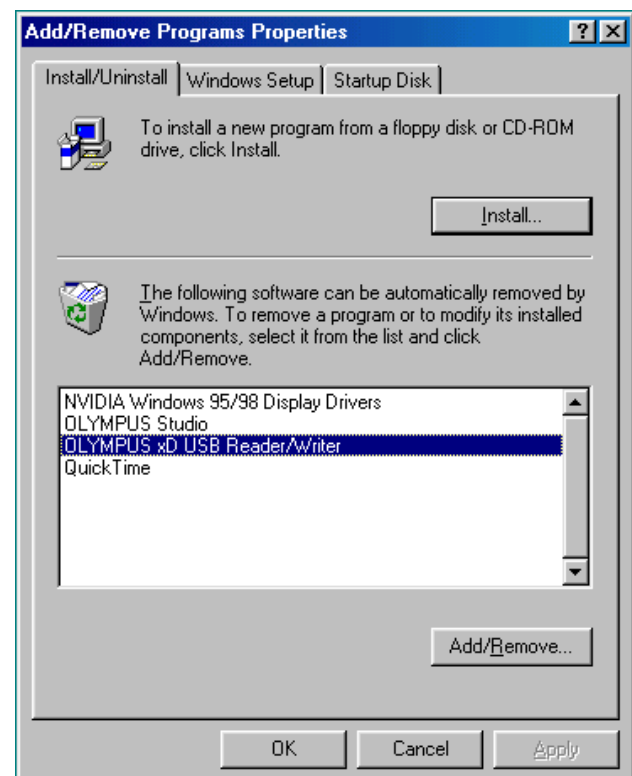
1. Click the [Start] button, then select [Settings] – [Control Panel].



2. Double-click [Add/Remove Programs].



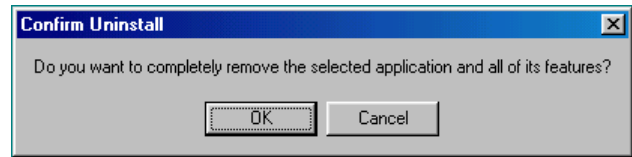
3. Select [OLYMPUS xD USB Reader/Writer], then click the [Add/Remove] button.



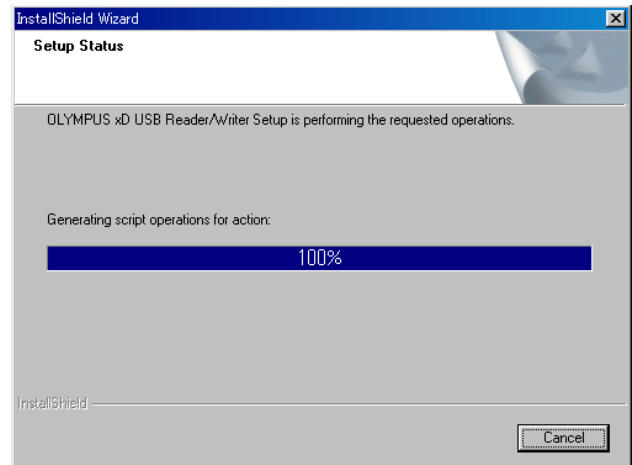


## How to uninstall the device driver/utility software (Cont.) <98/98 SE>

4. A confirmation window appears. Click [OK].

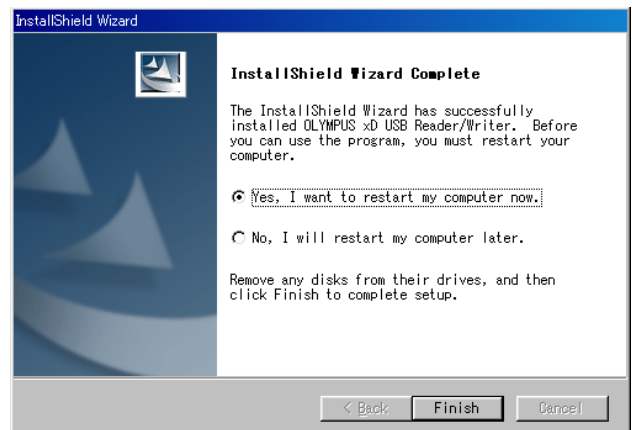


5. The [InstallShield Wizard] window appears.



6. When the device driver/utility software uninstallation is complete, the window at right appears. Select [Yes, I want to restart my computer now.] if you are ready, then click [Finish].

- The computer restarts.



The device driver/utility software is no longer installed.

# Windows Me/2000/XP

## How to install

You do not need to install the utility software to use the MAUSB-100.

Also refer to your computer's user manual and the manuals for any optional devices you are using.

### 1 Turn on the computer

<Me/2000/XP ♦ Install>

Turn on your computer's power (and connected devices) to start Windows Me/2000/XP.

If you are using a Windows 2000/XP, log on with the user name [Administrator], or use a user name with administrator privileges.

### 2 Install the utility software

<Me/2000/XP ♦ Install>

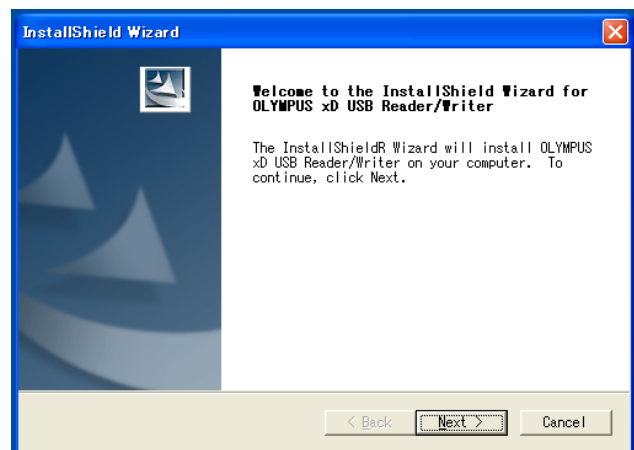
Before using the MAUSB-100 for the first time, it is recommended to install the utility software included on the provided CD-ROM.

- The device driver will not be installed with this procedure; it is not necessary for Windows Me/2000/XP since it is recognized as an OS-standard device driver.

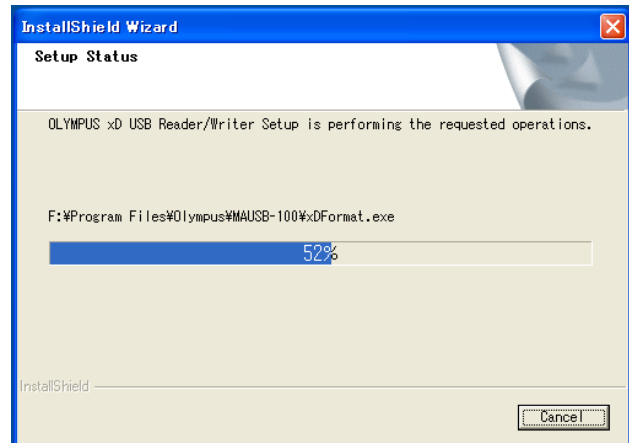
Before installation, make sure that the computer is turned on, then follow the steps below to install the utility software on your computer.

- Note that the windows shown below may look different on your computer, depending on how your operating system is configured.

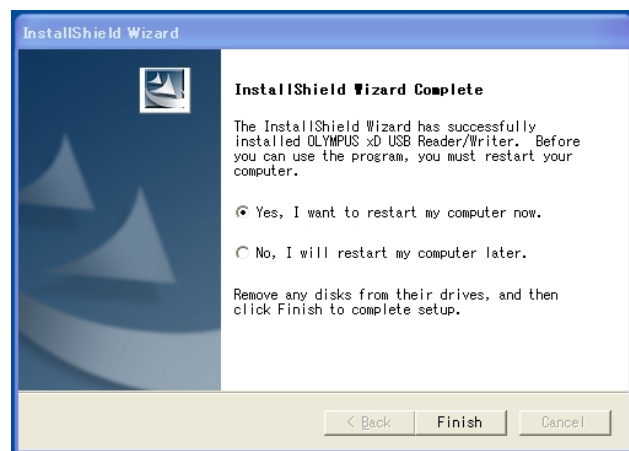
1. Turn on the computer, then place the provided CD-ROM into the computer's CD-ROM drive.
2. When the CD-ROM is recognized, the InstallShield setup window is displayed for a few seconds. Then, the [InstallShield Wizard] window appears.
3. Click the [Next] button.
  - If the window at right does not appear, refer to "If the installation window does not appear when the CD-ROM is loaded" (p. 20).
  - If you want to cancel the installation, click [Cancel].



4. During installation, the window at right appears.
- The installation time may vary, depending on your computer.



5. When installation of the utility software is complete, the window at right appears. Select [Yes, I want to restart my computer now.] if you are ready, then click [Finish].
- The computer restarts.

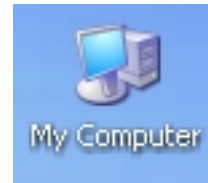


The utility software is now installed.  
(Remove the CD-ROM from the CD-ROM drive and store it in a safe place.)

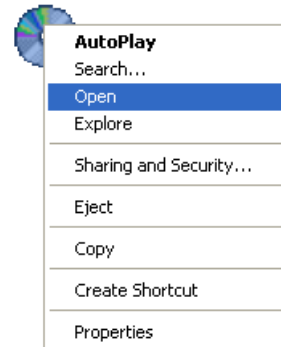
**If the installation window does not appear when the CD-ROM is loaded**

Follow the steps below to specify the file and start installing.

**1. Double-click** [My Computer].



**2. Right-click** [OLYMPUS]. Select [Open] from the pop-up menu.



**3. Double-click** [MAUSB\_100].



**4. Double-click** [Setup].

- The [InstallShield Wizard] window appears. Start installing by following “2 Install the utility software” (p. 18).



# Operating the MAUSB-100

The operating procedures for the MAUSB-100 under Windows Me/2000/XP are described below.

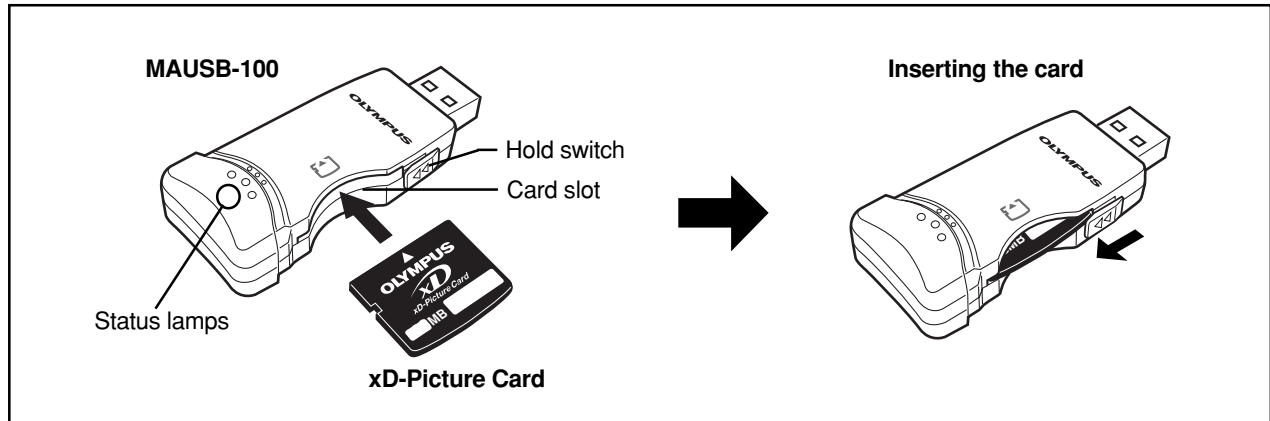
## 1 Inserting a card

<Me/2000/XP ♦ Operation>

1. Make sure that the hold switch is released, then insert a card into the MAUSB-100's card slot.

Make sure the card is level and that the gold-colored contact area is facing down. Insert the card all the way into the slot.

2. Lock the hold switch.



### Notes

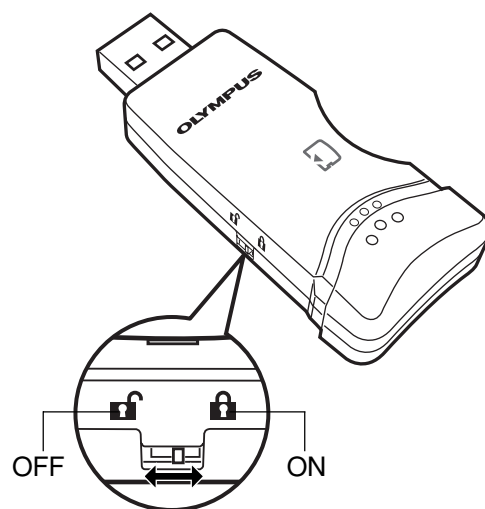
- Make sure that the card is facing the right way.
- Do NOT insert the card at an angle. Forcing a card in diagonally may damage the card and/or the MAUSB-100.
- Be sure to lock the hold switch after inserting the card. The computer will not be able to recognize the card if the hold switch is released.

## 2 Setting the write-protect switch <Me/2000/XP ♦ Operation>

Before connecting the MAUSB-100 to your computer, set the write-protect switch to ON or OFF as required.

**ON** : When you want to protect data stored on the inserted card from being deleted by mistake. The stored data cannot be changed, moved or deleted from the card, and the card cannot be written to or formatted.

**OFF** : When you want to change, move or delete the data stored on the inserted card, or want to write to or format the card.



### Note

If you have important data stored on the card, set the write-protect switch to ON to prevent accidental deletion.

### 3 Connecting to the computer


<Me/2000/XP ♦ Operation>

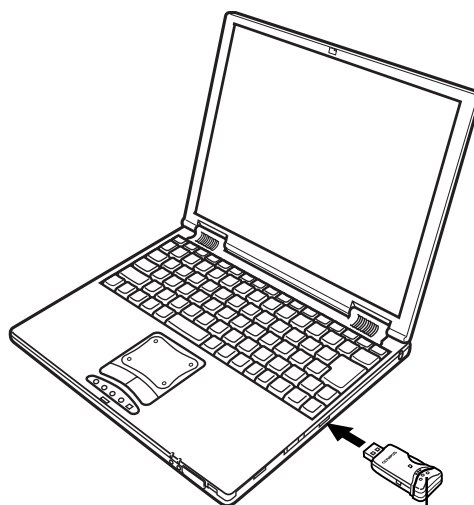
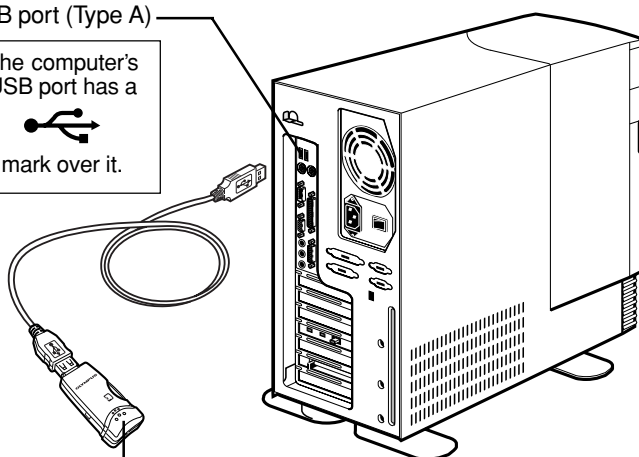
Connect the MAUSB-100's connector to the USB port on your computer. (You can plug in the USB connector while the computer is in use.)

#### Notes

- Make sure the connector is fully inserted.
- When inserting the connector, make sure it is oriented correctly (refer to the pictures below). Inserting the connector incorrectly may damage the connector and/or the computer's USB port.
- Make sure there is adequate space around the computer to connect the MAUSB-100 to the computer properly.
- If there is not enough space for the MAUSB-100 around the computer to allow a direct connection, use the provided USB extension cable. Connecting the MAUSB-100 to the computer incorrectly may result in damage to the connector and/or the computer's USB port.
- Do not apply force to the computer's USB port or the MAUSB-100 when removing/inserting a card from/into the MAUSB-100 if it is directly connected to the computer's USB port.

USB port (Type A)

The computer's USB port has a  
  
mark over it.



#### Status lamps

Green status lamp lights : When the MAUSB-100 is connected to the computer and is ready to use.

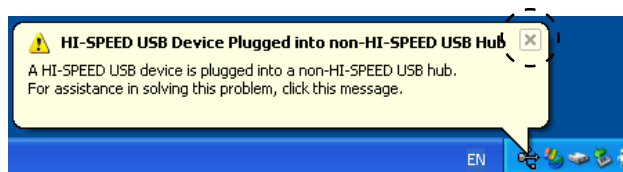
Red status lamp lights\* : When reading/writing to a card.

\*The status lamps may look in orange as both the green and red status lamps light together.

- Do not release the hold switch, remove the card or disconnect the MAUSB-100 from the computer while the red status lamp is lit. Doing so may destroy the data stored on the card.
- The green and red status lamps blink slowly if the card is not recognized correctly. When this happens, follow the instructions in "4 Removing a card" (p. 24) to remove the card from the MAUSB-100, then wipe the contact area with a dry cloth, and insert the card again. If the problem persists, the card may be damaged.

#### When connecting the MAUSB-100 to your computer for the first time

If you are using a version of Windows XP that supports USB 1.1, the following message appears when the MAUSB-100 is connected to your computer for the first time. Click [X] and close the window.



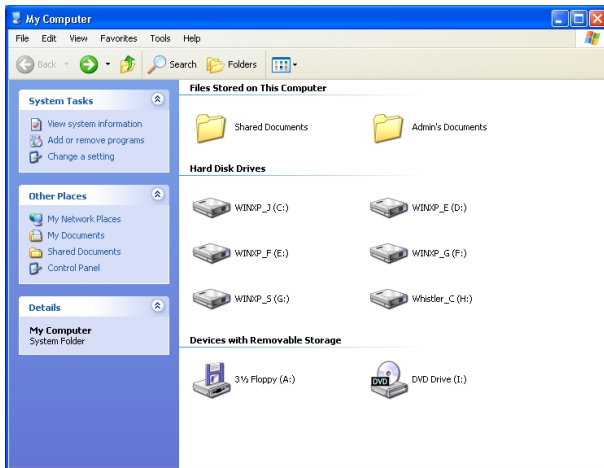
When the MAUSB-100 is connected to your computer, the green status lamp lights, and the computer recognizes the MAUSB-100 as a [Removable Disk].

You can see a [Removable Disk] icon by opening [My Computer] from the desktop.

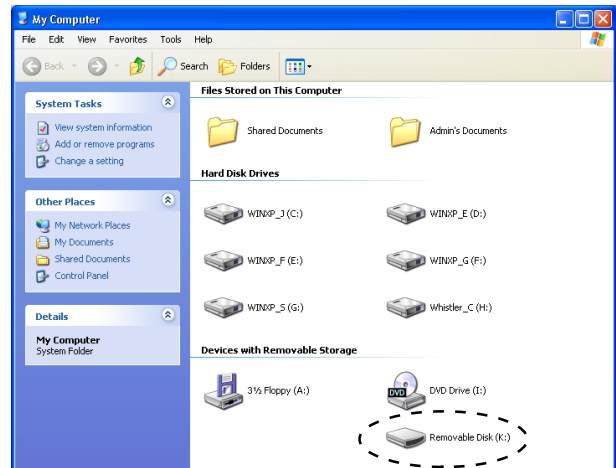
### Note

The drive letter assigned to the MAUSB-100 by the computer may differ depending on how your operating system is configured. Be sure to check the assigned drive letter after you make the connection.

Before connecting



After connecting



MAUSB-100

In this example, the Removable Disk is recognized as the K drive. The drive letter (e.g. [J:], [K:], etc.) used by your computer may differ depending on your computer and/or connected optional devices.

## 4 Removing a card

<Me/2000/XP ♦ Operation>

Close all software programs that are using data on the card (e.g. Explorer, graphics applications), then follow the steps below.

### Attention!

- If you do not follow the steps below, the data on the card may be damaged.
- Do not apply force to the computer's USB port or the MAUSB-100 when removing/inserting a card from/into the MAUSB-100 if it is directly connected to the computer's USB port.

1. **Double-click** [My Computer] on the desktop.

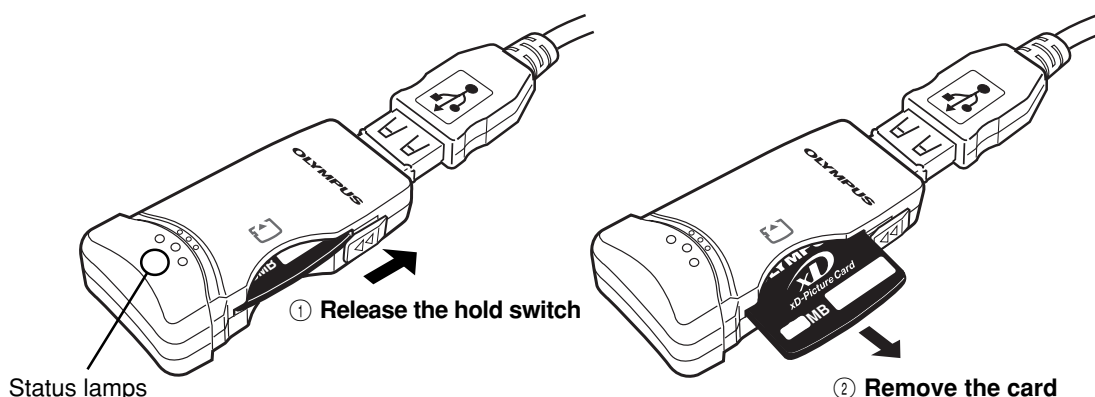
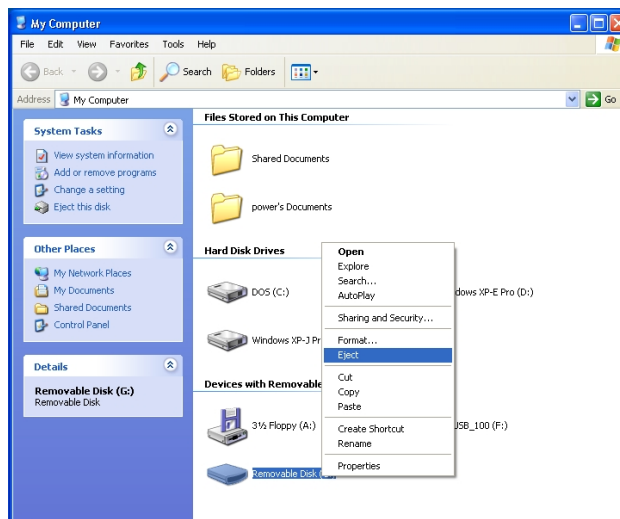
2. **Right-click** the corresponding [Removable Disk] icon, then click [Eject] in the pop-up menu.

- The card will not be ejected when [Eject] is clicked in this step.

3. Make sure that the red status lamp is **NOT** on.

4. Release the hold switch, then pull the card out of the card slot as shown.

- If you are using a Windows 2000/XP, you can only remove a card under the user name [Administrator] or a user name with administrator privileges. Log on with the correct user name and password if you want to remove the card.



### Note

- NEVER release the hold switch, remove the card or disconnect the MAUSB-100 from the computer while the red status lamp is lit. Doing so may destroy the data on the card or the card itself, or cause the computer to malfunction.
- Be careful when removing the card as it can get hot after extended use. Take special care not to touch the card's terminals.



## 5 Disconnecting the MAUSB-100 <Me/2000/XP ♦ Operation>

Close all software programs that are using data on the card (e.g. Explorer, graphics applications), then follow the steps below.

1. If a card is already inserted in the MAUSB-100, follow steps 1 - 3 in "4 Removing a card".
2. **Left-click** the [Safely Remove Hardware] icon on the taskbar.
  - The message that appears with the [Safely Remove Hardware] icon may differ depending on your computer.
3. A message box titled [Safely remove USB Mass Storage Device - Drive (K:)] appears on the taskbar. Click on it.
  - The drive letter (K:) above will differ depending on your computer.
4. Make sure that the red status lamp is NOT on, then click the [OK] button.

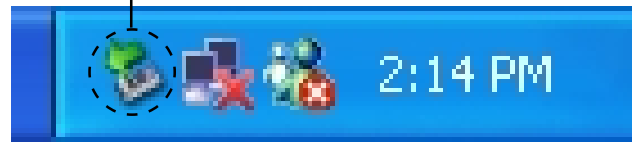
- For Windows XP, the message box at right appears when the balloon help is on.

The MAUSB-100 is ready to be disconnected from your computer.

5. Unplug the MAUSB-100 from the computer's USB port.

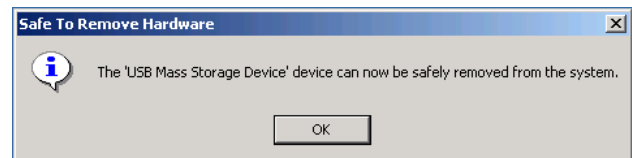
- You can unplug the MAUSB-100 with the computer's power on. (It is not required to turn off the computer, restart it, or have it in the sleep mode.)
- Close all software programs that are using data on the card (e. g. Explorer, graphics applications) before removing the card. Otherwise, you cannot perform this step.

[Safely Remove Hardware]



Safely remove USB Mass Storage Device - Drive(K:)

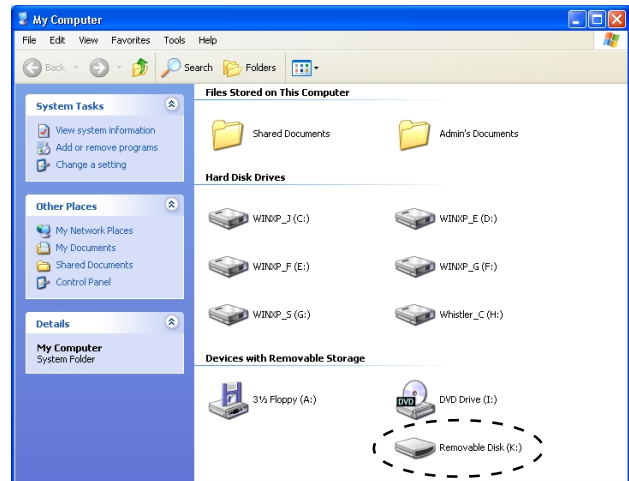
In this example, the Removable Disk is recognized as the K drive.



## 6 Copying files from/to a card

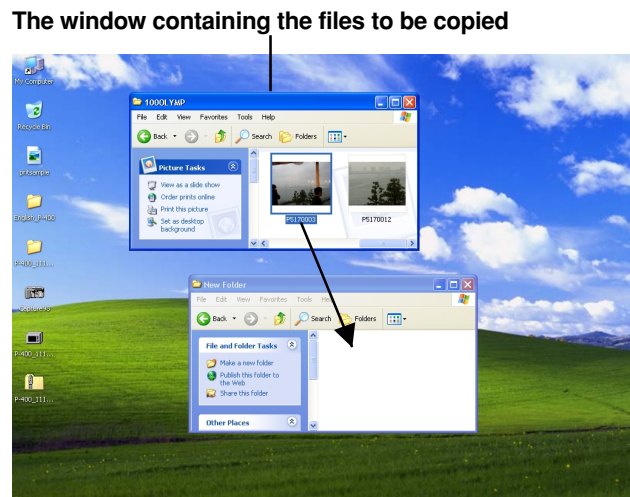
<Me/2000/XP ♦ Operation>

1. Insert a card into the MAUSB-100 and connect it to the computer's USB port.
2. **Double-click** [My Computer] from the desktop.
3. To view the contents of a card, **double-click** the corresponding [Removable Disk] icon.
  - Double-clicking the [Removable Disk] icon will display the directory and the list of image files on the inserted card.



In this example, the Removable Disk is recognized as the K drive. The drive letter (e.g. [J:], [K:], etc.) used by your computer may differ depending on your computer and/or connected optional devices.

4. **Drag** the file icons you want to copy and **drop** them onto the destination folder.
  - The process is the same as copying files from a floppy disk.
  - It is also possible to move files to another folder, erase files, or write data from another folder. (Data cannot be written to or erased from a card when the write-protect switch is set to the ON position.)



### Drag & Drop

To perform a drag and drop, press and hold the left mouse button over the selected file(s), then move the mouse (drag) and release the button at the place where you want to copy (drop).

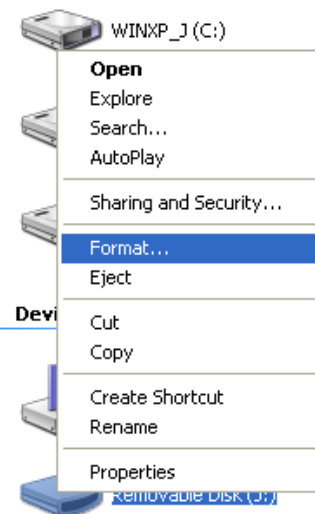
## Before formatting the card

- If you are using a Windows 2000/XP, log on with the user name [Administrator], or use a user name with administrator privileges. Otherwise, formatting the card will be impossible.
- **To use the card with a digital camera, format the card with the digital camera or with the computer connected to the MAUSB-100 using the provided utility software.\* If you do not use the provided utility software when formatting a card with the connected computer, the card may not be recognized by the digital camera.**
- It is not possible to format a card or write, move or erase data on a card when the write-protect switch is set to the ON position. Set the write-protect switch to the OFF position and format the card.
- Formatting erases all data in the card. All important data should be copied to a hard disk, etc. beforehand.

\* See "Using the provided utility software [xDFormat]" (p. 40) for how to use it.

1. Double-click [My Computer], then **right-click** on the corresponding [Removable Disk] icon. Select [Format] from the pop-up menu.

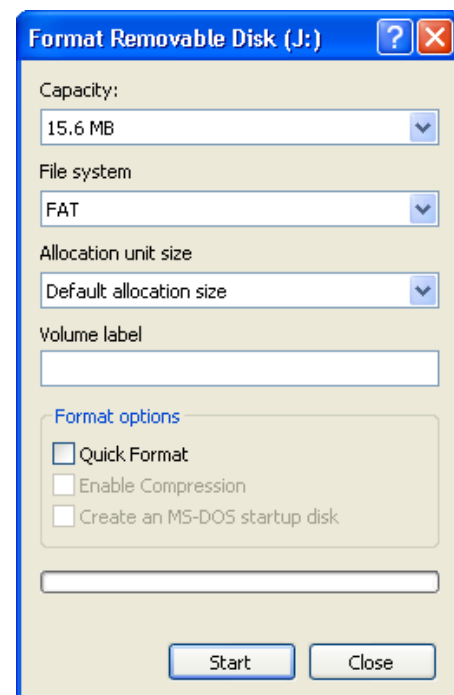
### Hard Disk Drives



2. Select [FAT] under [File system], then click the [Start] button.
  - After formatting is complete, the card is ready for use.

## Note

Use only the FAT file system.  
If [NTFS] or [FAT32] is selected, the card may not be formatted correctly.



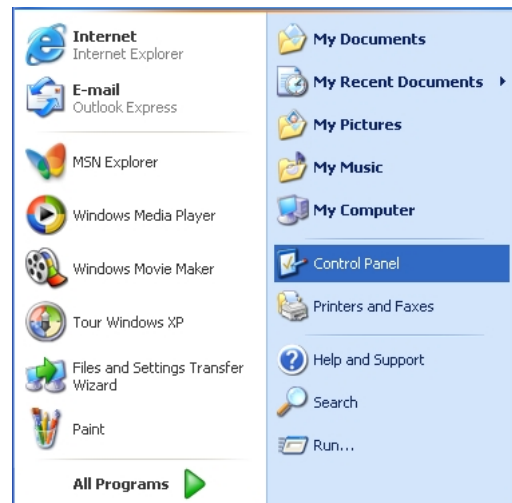
Example shows a 16MB card

# How to uninstall the utility software <Me/2000/XP>

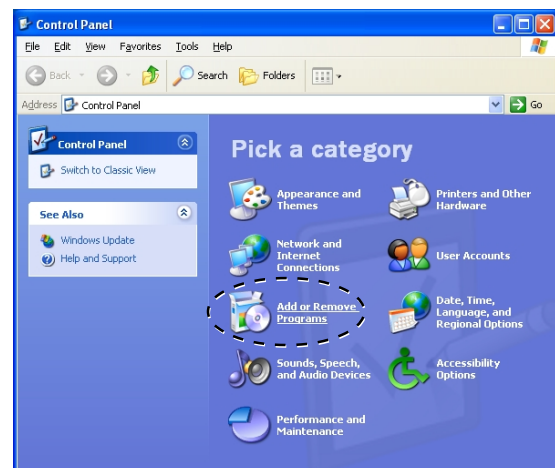
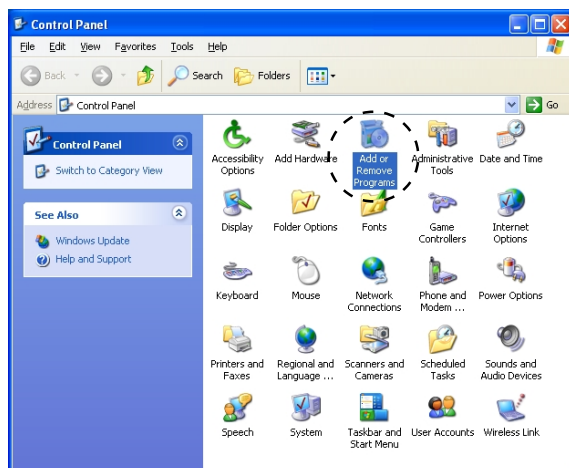
The utility software can be deleted if it is no longer needed. First make sure that the MAUSB-100 is disconnected from the computer's USB port, then follow the steps below.

- On-screen displays or messages may vary depending on the version of Windows you are using.

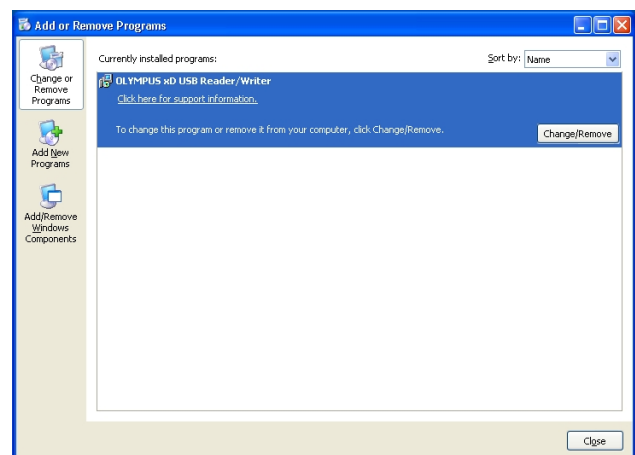
1. Click the [Start] button, then select [Settings] (only for Windows Me/2000) – [Control Panel].



2. Double-click [Add or Remove Programs].

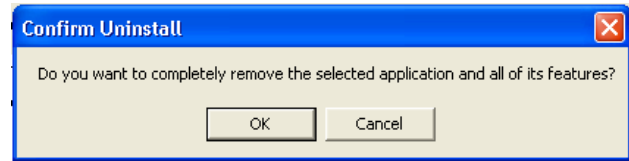


3. Select [OLYMPUS xD USB Reader/Writer], then click the [Change/Remove] button.

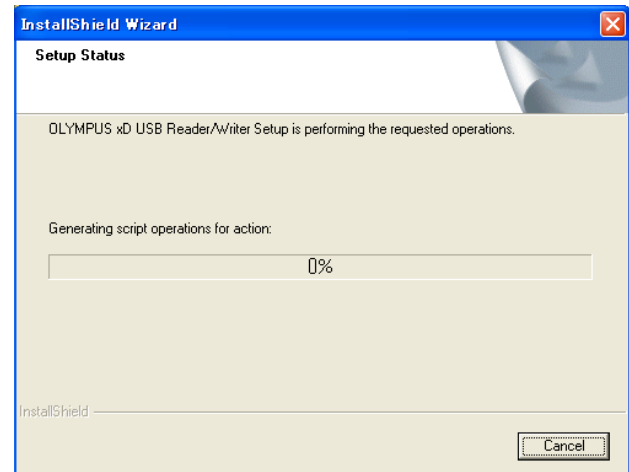


## How to uninstall the utility software (Cont.) <Me/2000/XP>

4. A confirmation window appears. Click [OK].

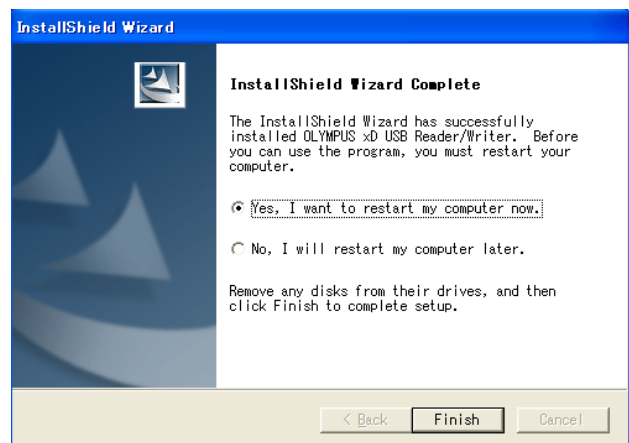


5. The [InstallShield Wizard] window appears.



6. When un installation of the utility software is complete, the window at right appears. Select [Yes, I want to restart my computer now.] if you are ready, then click [Finish].

- The computer restarts.



The utility software is no longer installed.

# Mac OS 9

## How to install

Also refer to your computer's user manual and the manuals for any optional devices you are using.

### 1 Turn on the computer

<Mac OS 9 ♦ Install>

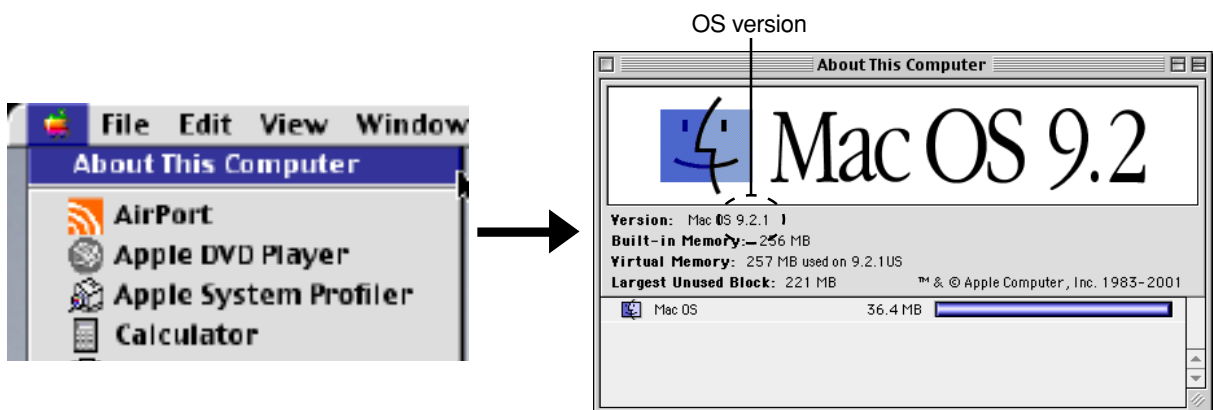
Turn on your computer's power (and connected devices) to start Mac OS.

#### Notes

- To use a DOS/Windows formatted xD-Picture Card or the xD-Picture Card formatted on a digital camera, File Exchange (provided with Mac OS) must be installed. Select [Control Panels] from the Apple Menu to check if File Exchange is installed on your computer. (Refer to Mac OS [Help] for more details.)
- Note that the windows shown below may look different on your computer, depending on how your operating system is configured.

#### To identify your Mac OS version

Select [About This Computer] in the Apple menu and identify your Mac OS version.



# Operating the MAUSB-100

The operating procedure for the MAUSB-100 under Mac OS 9 is described below.

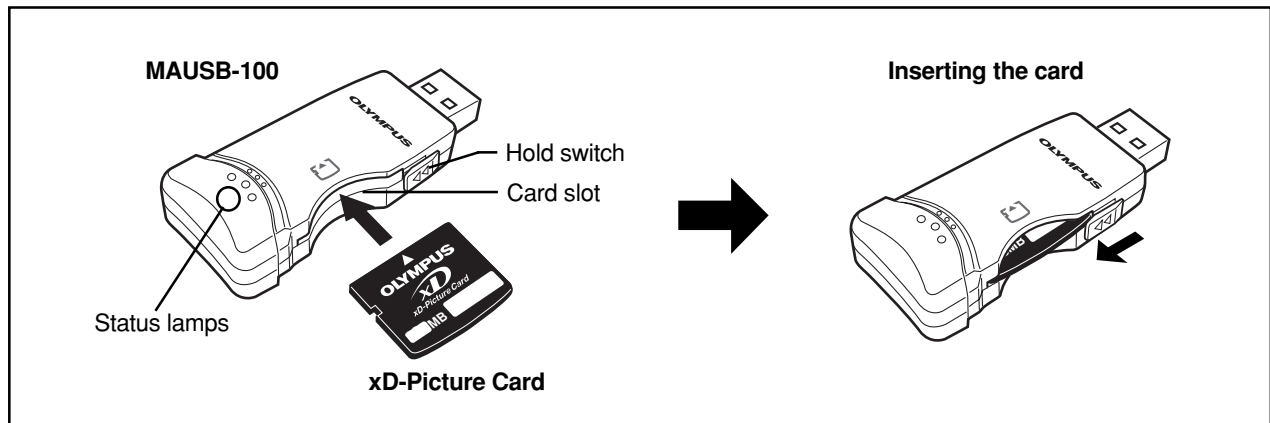
## 1 Inserting a card

<Mac OS 9 ♦ Operation>

1. Make sure that the hold switch is released, then insert a card into the MAUSB-100's card slot.

Make sure the card is level and that the gold-colored contact area is facing down. Insert the card all the way into the slot.

2. Lock the hold switch.



### Notes

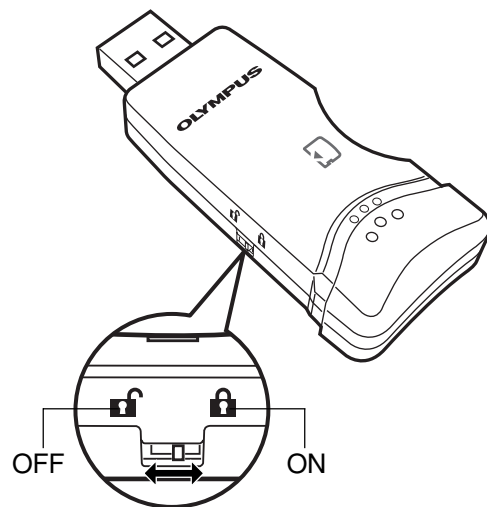
- Make sure that the card is facing the right way.
- Do NOT insert the card at an angle. Forcing a card in diagonally may damage the card and/or the MAUSB-100.
- Be sure to lock the hold switch after inserting the card. The computer will not be able to recognize the card if the hold switch is released.

## 2 Setting the write-protect switch <Mac OS 9 ♦ Operation>

Before connecting the MAUSB-100 to your computer, set the write-protect switch to ON or OFF as required.

**ON** : When you want to protect data stored on the inserted card from being deleted by mistake. The stored data cannot be changed, moved or deleted from the card, and the card cannot be written to or formatted.

**OFF** : When you want to change, move or delete the data stored on the inserted card, or want to write to or format the card.



### Note

If you have important data stored on the card, set the write-protect switch to ON to prevent accidental deletion.

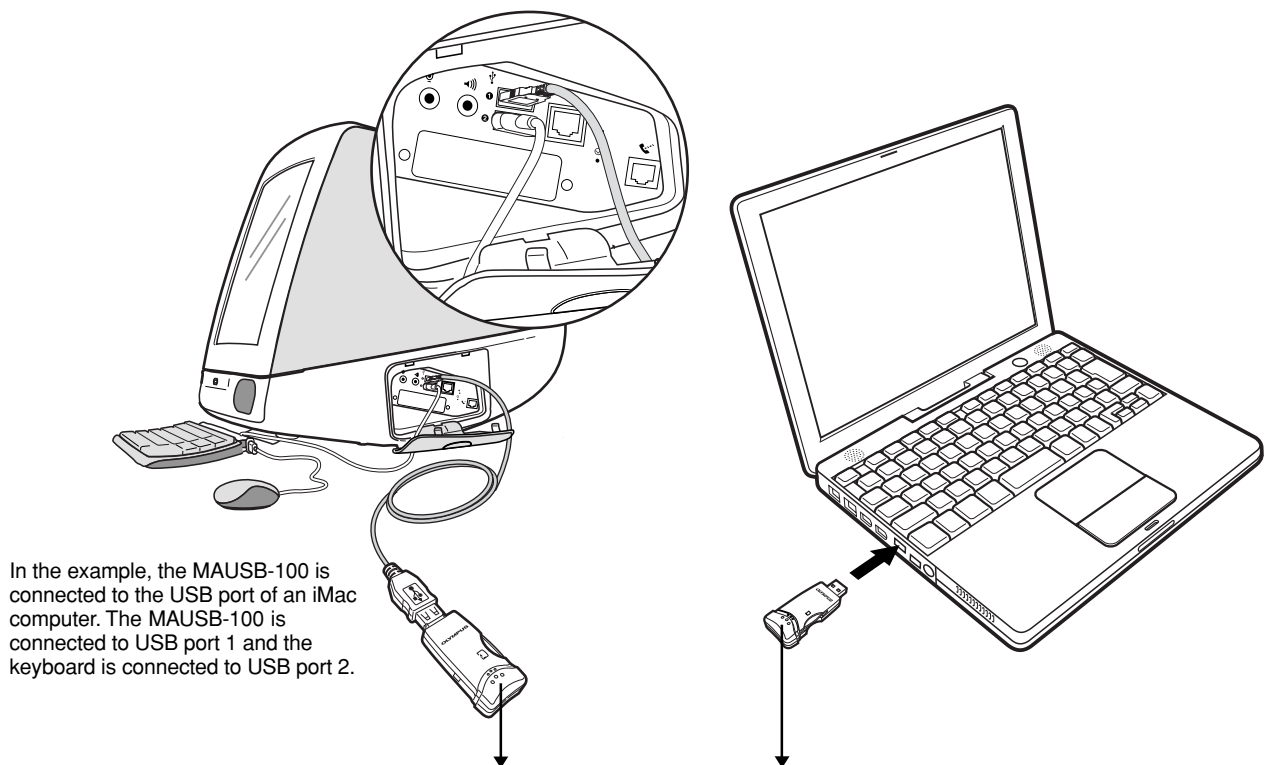
### 3 Connecting to the computer

<Mac OS 9 ♦ Operation>

Connect the MAUSB-100's connector to the USB port on your computer. (You can plug in the USB connector while the computer is in use.)

#### Notes

- Make sure the connector is fully inserted.
- When inserting the connector, make sure it is oriented correctly (refer to the pictures below). Inserting the connector incorrectly may damage the connector and/or the computer's USB port.
- Make sure there is adequate space around the computer to connect the MAUSB-100 to the computer properly.
- If there is not enough space for the MAUSB-100 around the computer to allow a direct connection, use the provided USB extension cable. Connecting the MAUSB-100 to the computer incorrectly may result in damage to the connector and/or the computer's USB port.
- Do not apply force to the computer's USB port or the MAUSB-100 when removing/inserting a card from/into the MAUSB-100 if it is directly connected to the computer's USB port.



#### Status lamps

Green status lamp lights : When the MAUSB-100 is connected to the computer and is ready to use.

Red status lamp lights\* : When reading/writing to a card.

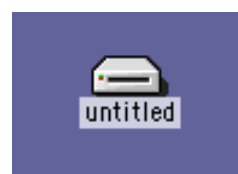
\*The status lamps may look in orange as both the green and red status lamps light together.

- Do not release the hold switch, remove the card or disconnect the MAUSB-100 from the computer while the red status lamp is lit. Doing so may destroy the data stored on the card.
- The green and red status lamps blink slowly if the card is not recognized correctly. When this happens, follow the instructions in "4 Removing a card" (p. 33) to remove the card from the MAUSB-100, then wipe the contact area with a dry cloth, and insert the card again. If the problem persists, the card may be damaged.

#### When the card is recognized correctly

When the card is inserted correctly and the MAUSB-100 is recognized on your computer, the green status lamp lights and the icon at right appears.

- The title of the card varies depending on the card inserted.





## 4 Removing a card

<Mac OS 9 ♦ Operation>

Close all software programs that are using data on the card (e. g. graphics applications), then follow the steps below.

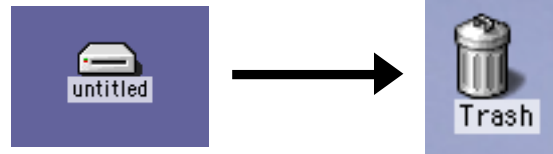
### Attention!

- If you do not follow the steps below, the data on the card may be damaged.
- Do not apply force to the computer's USB port or the MAUSB-100 when removing/inserting a card from/into the MAUSB-100 if it is directly connected to the computer's USB port.

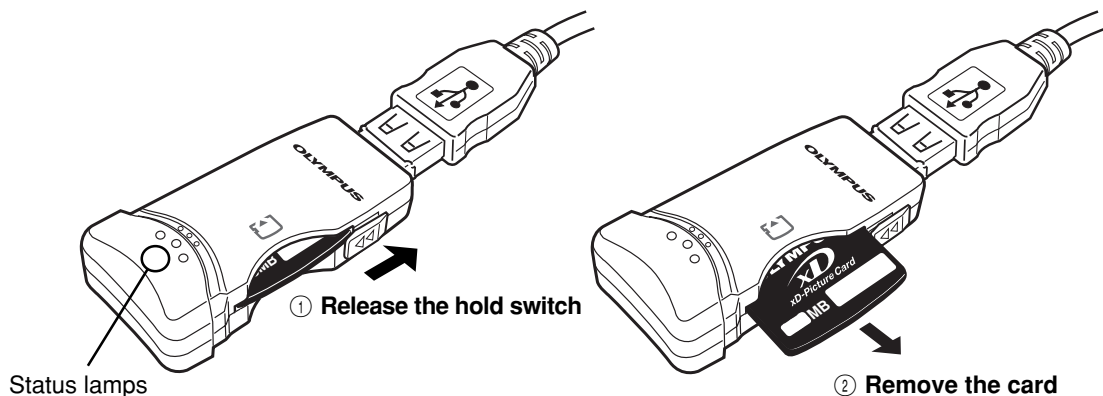
1. **Drag & drop** the card's icon onto the Trash icon.

#### Drag & Drop

To perform a drag and drop, press and hold the mouse button over the selected file(s), then move the mouse (drag) and release the button at the place where you want to copy (drop).



2. Make sure that the status lamps go out completely.
3. Release the hold switch, then pull the card out of the card slot as shown.



### Note

- NEVER release the hold switch, remove the card or disconnect the MAUSB-100 from the computer while the red status lamp is lit. Doing so may destroy the data on the card or the card itself, or cause the computer to malfunction.
- Be careful when removing the card as it can get hot after extended use. Take special care not to touch the card's terminals.

## 5 Disconnecting the MAUSB-100

<Mac OS 9 ♦ Operation>

Close all software programs that are using data on the card (e. g. graphics applications), then follow the steps below.

1. If a card is already inserted in the MAUSB-100, **drag & drop** the card's icon onto the Trash icon.
2. Make sure that the status lamps go out completely.
3. Unplug the MAUSB-100 from the computer's USB port.

## 6 Copying files from/to a card

<Mac OS 9 ♦ Operation>

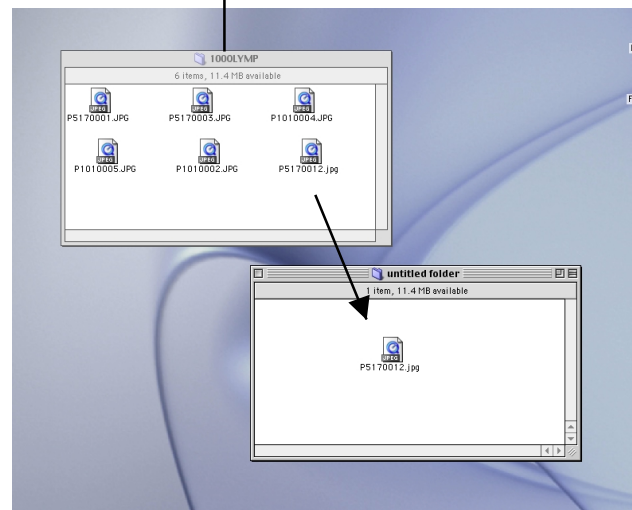
1. Insert a card into the MAUSB-100 and connect it to the computer's USB port.
  - The green status lamp lights, then the card icon appears on the desktop.
  - The icon's appearance may vary, depending on the card and the OS version.
2. **Double-click** the icon to display the files that you want to copy.
3. **Drag** the file icons you want to copy and **drop** them onto the destination folder.

### Drag & Drop

To perform a drag and drop, press and hold the mouse button over the selected file(s), then move the mouse (drag) and release the button at the place where you want to copy (drop).



The window containing the files to be copied



## 7 Formatting a card

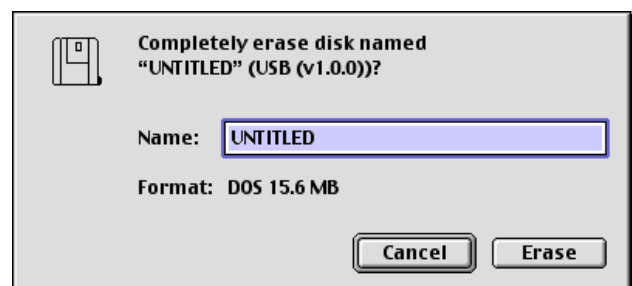
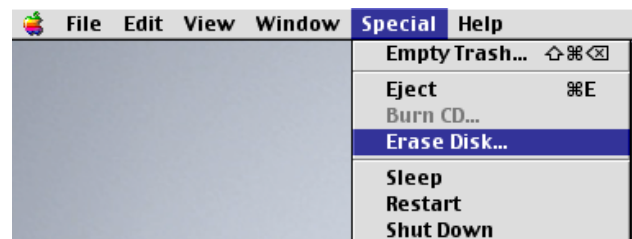
<Mac OS 9 ♦ Operation>

### Before formatting the card

- **If a card is going to be used with a digital camera, be sure to format it with the camera you are using. Cards formatted by the computer using the MAUSB-100 may not be recognized by the digital camera.**
- It is not possible to format a card or write, move or erase data on a card when the write-protect switch is set to the ON position. Set the write-protect switch to the OFF position and format the card.
- Formatting erases all data in the card. All important data should be copied to a hard disk, etc. beforehand.

### Formatting a card with the MAUSB-100

1. Select [Erase Disk] from the [Special] menu.
2. If a confirmation window appears, make sure the card you want to format is selected and click [Erase].
  - Formatting starts.



# Mac OS X

## How to install

Also refer to your computer's user manual and the manuals for any optional devices you are using.

### 1 Turn on the computer

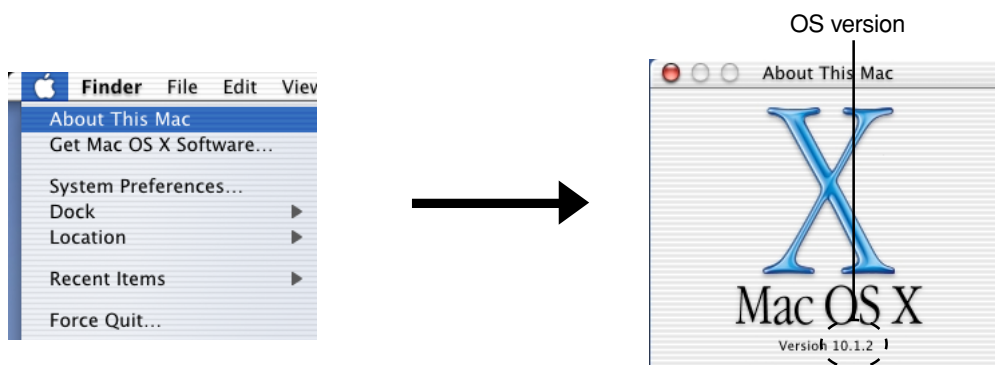
<Mac OS X ♦ Install>

Turn on your computer's power (and connected devices) to start Mac OS.

- Note that the windows shown below may look different on your computer, depending on how your operating system is configured.

#### To identify your Mac OS version

Select [About This Mac] in the Apple menu and identify your Mac OS version.



# Operating the MAUSB-100

The operating procedure for the MAUSB-100 under Mac OS X is described below.

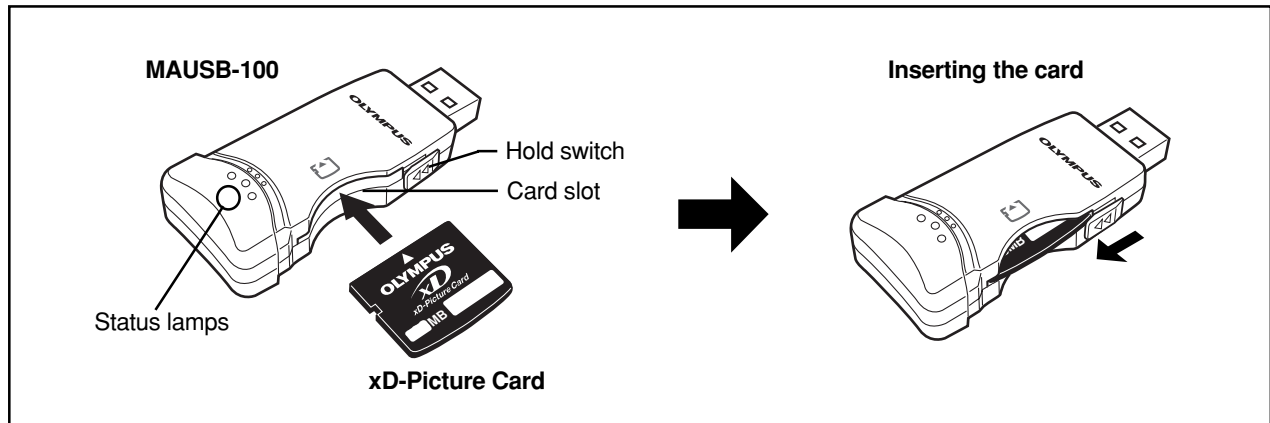
## 1 Inserting a card

<Mac OS X ♦ Operation>

1. Make sure that the hold switch is released, then insert a card into the MAUSB-100's card slot.

Make sure the card is level and that the gold-colored contact area is facing down. Insert the card all the way into the slot.

2. Lock the hold switch.



### Notes

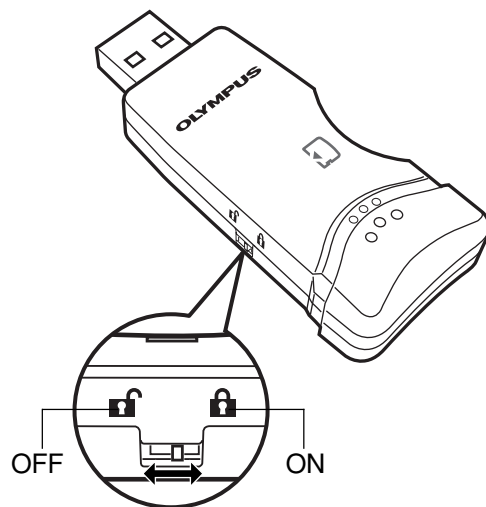
- Make sure that the card is facing the right way.
- Do NOT insert the card at an angle. Forcing a card in diagonally may damage the card and/or the MAUSB-100.
- Be sure to lock the hold switch after inserting the card. The computer will not be able to recognize the card if the hold switch is released.

## 2 Setting the write-protect switch <Mac OS X ♦ Operation>

Before connecting the MAUSB-100 to your computer, set the write-protect switch to ON or OFF as required.

**ON** : When you want to protect data stored on the inserted card from being deleted by mistake. The stored data cannot be changed, moved or deleted from the card, and the card cannot be written to or formatted.

**OFF** : When you want to change, move or delete the data stored on the inserted card, or want to write to or format the card.



### Note

If you have important data stored on the card, set the write-protect switch to ON to prevent accidental deletion.

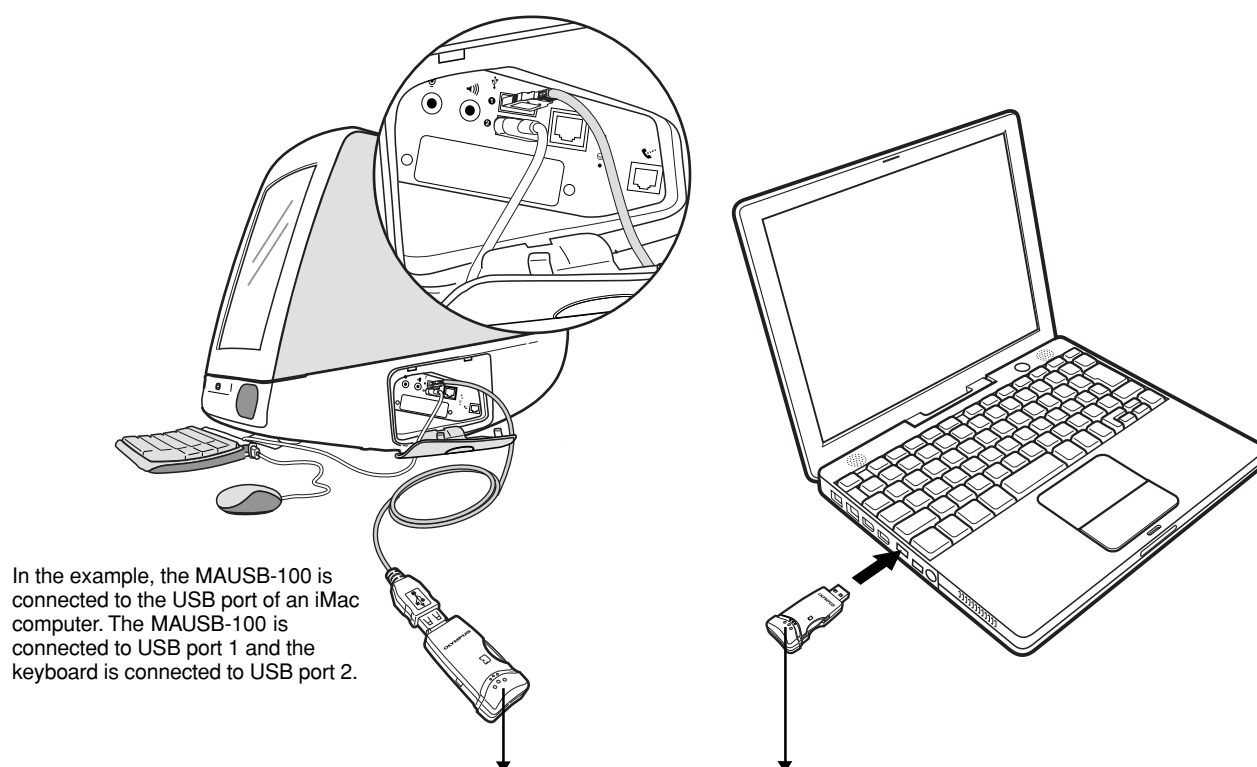
### 3 Connecting to the computer

<Mac OS X ♦ Operation>

Connect the MAUSB-100's connector to the USB port on your computer. (You can plug in the USB connector while the computer is in use.)

#### Notes

- Make sure the connector is fully inserted.
- When inserting the connector, make sure it is oriented correctly (refer to the pictures below). Inserting the connector incorrectly may damage the connector and/or the computer's USB port.
- Make sure there is adequate space around the computer to connect the MAUSB-100 to the computer properly.
- If there is not enough space for the MAUSB-100 around the computer to allow a direct connection, use the provided USB extension cable. Connecting the MAUSB-100 to the computer incorrectly may result in damage to the connector and/or the computer's USB port.
- Do not apply force to the computer's USB port or the MAUSB-100 when removing/inserting a card from/into the MAUSB-100 if it is directly connected to the computer's USB port.



#### Status lamps

Green status lamp lights : When the MAUSB-100 is connected to the computer and is ready to use.

Red status lamp lights\* : When reading/writing to a card.

\*The status lamps may look in orange as both the green and red status lamps light together.

- Do not release the hold switch, remove the card or disconnect the MAUSB-100 from the computer while the red status lamp is lit. Doing so may destroy the data stored on the card.
- The green and red status lamps blink slowly if the card is not recognized correctly. When this happens, follow the instructions in "4 Removing a card" (p. 38) to remove the card from the MAUSB-100, then wipe the contact area with a dry cloth, and insert the card again. If the problem persists, the card may be damaged.

#### When the card is recognized correctly

When the card is inserted correctly and the MAUSB-100 is recognized on your computer, the green status lamp lights and the icon at right appears.

- The title of the card varies depending on the card inserted.



## 4 Removing a card

<Mac OS X ♦ Operation>

Close all software programs that are using data on the card (e. g. graphics applications), then follow the steps below.

### Attention!

- If you do not follow the steps below, the data on the card may be damaged.
- Do not apply force to the computer's USB port or the MAUSB-100 when removing/inserting a card from/into the MAUSB-100 if it is directly connected to the computer's USB port.

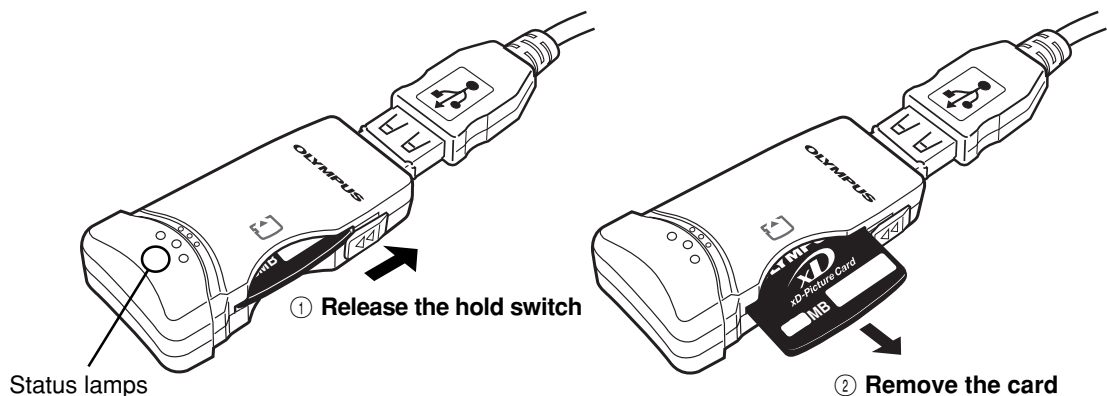
1. **Drag & drop** the card's icon onto the Trash icon.

#### Drag & Drop

To perform a drag and drop, press and hold the mouse button over the selected file(s), then move the mouse (drag) and release the button at the place where you want to copy (drop).



2. Make sure that the status lamps go out completely.
3. Release the hold switch, then pull the card out of the card slot as shown.



### Note

- NEVER release the hold switch, remove the card or disconnect the MAUSB-100 from the computer while the red status lamp is lit. Doing so may destroy the data on the card or the card itself, or cause the computer to malfunction.
- Be careful when removing the card as it can get hot after extended use. Take special care not to touch the card's terminals.

## 5 Disconnecting the MAUSB-100

<Mac OS X ♦ Operation>

Close all software programs that are using data on the card (e. g. graphics applications), then follow the steps below.

1. If a card is already inserted in the MAUSB-100, **drag & drop** the card's icon onto the Trash icon.
2. Make sure that the status lamps go out completely.
3. Unplug the MAUSB-100 from the computer's USB port.

## 6 Copying files from/to a card

<Mac OS X ♦ Operation>

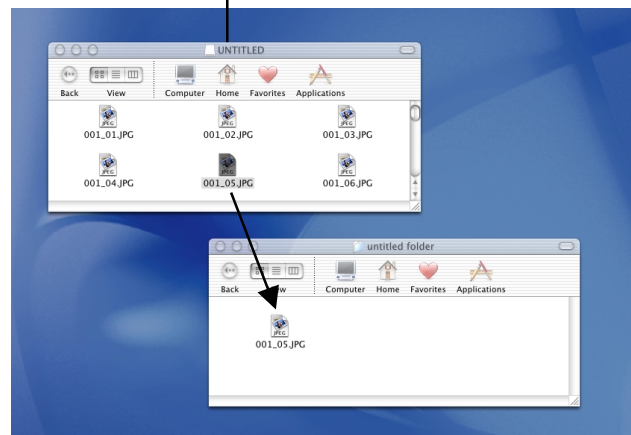
1. Insert a card into the MAUSB-100 and connect it to the computer's USB port.
  - The green status lamp lights, then the card icon appears on the desktop.
  - The icon's appearance may vary, depending on the card and the OS version.
2. **Double-click** the icon to display the files that you want to copy.
3. **Drag** the file icons you want to copy and **drop** them onto the destination folder.

### Drag & Drop

To perform a drag and drop, press and hold the mouse button over the selected file(s), then move the mouse (drag) and release the button at the place where you want to copy (drop).



The window containing the files to be copied



## 7 Formatting a card

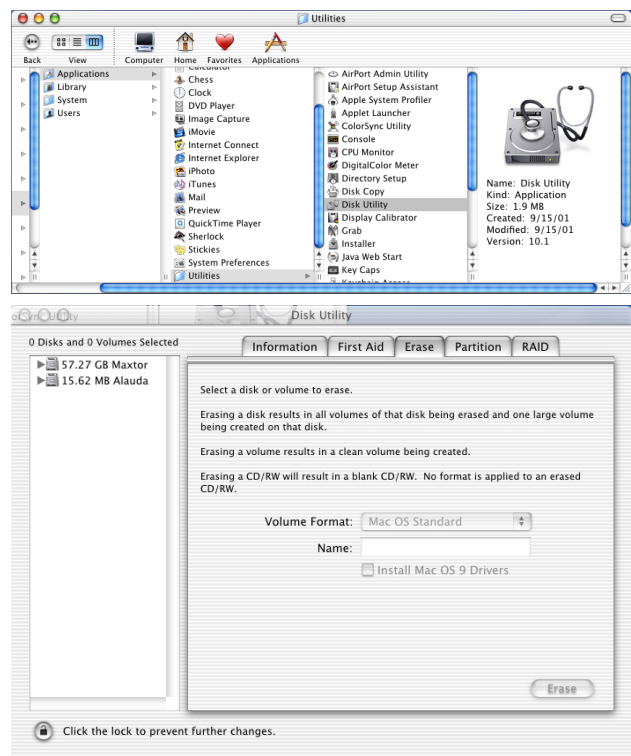
<Mac OS X ♦ Operation>

### Before formatting the card

- **If a card is going to be used with a digital camera, be sure to format it with the camera you are using. Cards formatted by the computer using the MAUSB-100 may not be recognized by the digital camera.**
- It is not possible to format a card or write, move or erase data on a card when the write-protect switch is set to the ON position. Set the write-protect switch to the OFF position and format the card.
- Formatting erases all data in the card. All important data should be copied to a hard disk, etc. beforehand.

### Formatting the card for Mac OS X

1. Select the Macintosh hard disk icon on the desktop.
2. Select [Applications] – [Utilities] – [Disk Utility] – [Erase].
3. Select the icon of the card you want to format.
4. Click the [Erase] button.
  - Formatting starts.





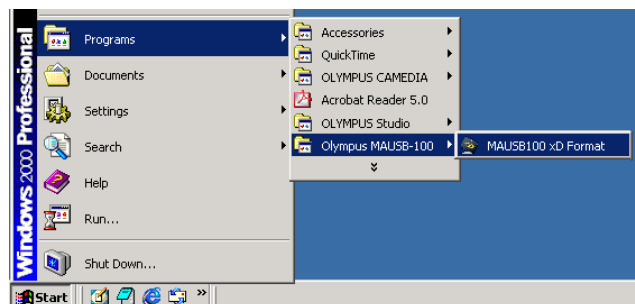
# Using the provided utility software [xDFormat] (compatible with Windows 98/98 SE/Me/2000/XP)

This utility software allows you to format the mounted card on your computer so that it is equivalent to the formatting used by Olympus digital cameras. This makes it easier to use xD Picture Cards in your computer environment.

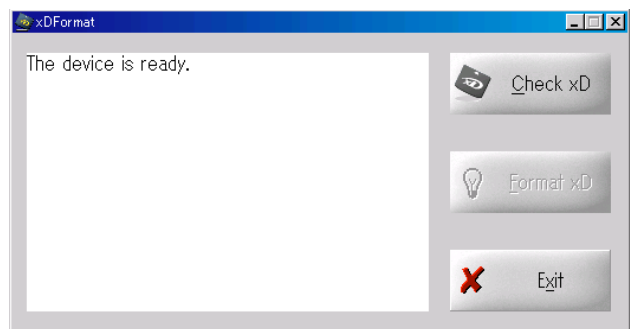
## Notes

- Formatting erases all data on the card. All important data should be copied to a hard disk, etc. beforehand.
- Set the MAUSB-100's write-protect switch to OFF before you start formatting.
- Close all software programs that are using data on the card (e.g. Explorer, graphics applications) before you start formatting.

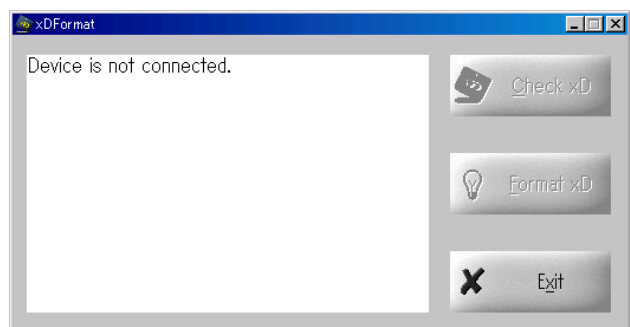
1. Click the [Start] button, then select [Programs] – [Olympus MAUSB-100] – [MAUSB100 xD Format].



2. The utility software starts up and [The device is ready.] appears when the MAUSB-100 is recognized.



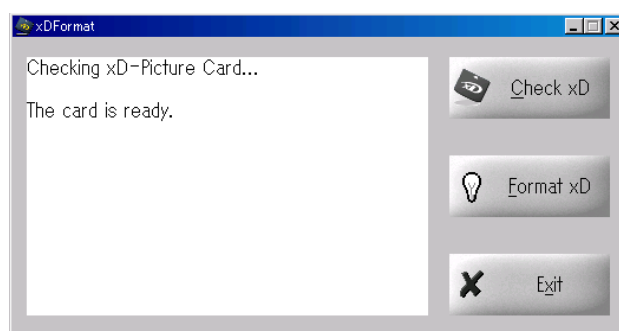
- If the MAUSB-100 is not connected to the computer, [Device is not connected.] appears.





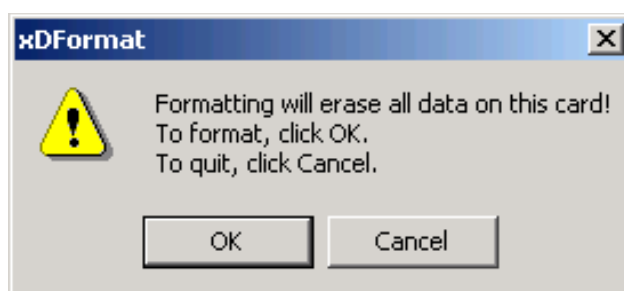
3. Click [Check xD]. [The card is ready.] appears if the xD-Picture Card is recognized by the computer.

- If an xD-Picture card is not already inserted in the MAUSB-100, a warning message saying [Insert xD-Picture card.] appears.



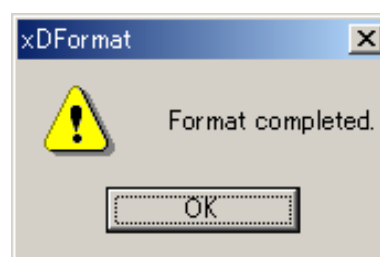
4. Click [Format xD]. A warning message saying [Formatting will erase all data on this card! To format, click OK. To quit, click Cancel.] appears. To format the card, click [OK].

- The red status lamp lights while the card is being formatted. NEVER remove the card or disconnect the MAUSB-100 from the computer when the red status lamp is lit.



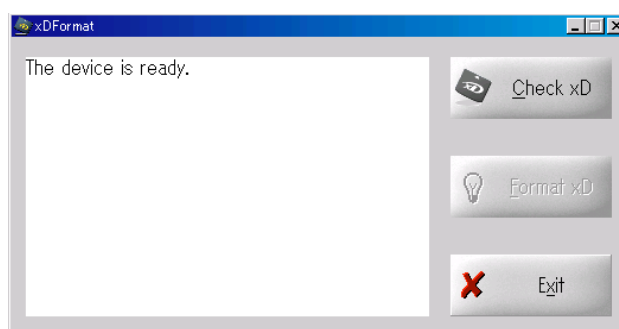
5. When formatting is complete, [Format completed.] appears.

- If the MAUSB-100's write-protect switch is set to ON, the card cannot be formatted and a warning message saying [This card is protected.] appears.



6. Click [Exit] to close [xDFormat].

- If you want to use the card after formatting, be sure to close the utility software [xDFormat] first.
- Be sure to close the utility software [xDFormat] before removing the card or disconnecting the MAUSB-100 from the computer.



# Troubleshooting

## Windows

	PROBLEM	CAUSE	SOLUTIONS	REF. PAGE
1	The green status lamp does not light.	The MAUSB-100 is not connected correctly to the computer's USB port.	Make sure that the MAUSB-100 is facing the right way and connect it to the computer's USB port firmly.	11, 22
		The power supply from the USB port is insufficient.	If you are using a USB hub, it may not function properly with the MAUSB-100. Connect the MAUSB-100 directly to the computer.	5
2	If you are using Windows 98/98 SE: A [Add New Hardware Wizard] window appears when you connect the MAUSB-100.	You have connected the MAUSB-100 before installing the device driver.	Click [Cancel] to close the window, then disconnect the MAUSB-100 from the PC and install the device driver.	9
3	If you are using Windows 98/98 SE: The MAUSB-100 doesn't work even after installing the device driver and connecting the MAUSB-100 to the computer.	The Universal Serial Bus Controller is Disabled.	Change the [OLYMPUS MAUSB-100 xD USB Reader/Writer] settings or the [MAUSB-100 Enumerator] settings on the [Universal Serial Bus Controller] by selecting [Start] - [Settings] - [Control Panel] - [System] - [Device manager]. ([X] appears. Right-click on [Properties] and clear the check box for [Disable in this hardware profile] on [General].)	—
		The USB port is disabled in the BIOS settings.	Set the USB port to "Enable" in the BIOS settings, referring to your computer's instruction manual.	—
4	If you are using Windows 98/98 SE: [?] appears in Device Manager. (This is after you have performed all the steps in the [Add New Hardware Wizard] window for connecting the MAUSB-100.)	The MAUSB-100 driver was not installed correctly. (It is not necessary to install the device driver on Windows Me/2000/XP.)	Delete [? MAUSB-100], then disconnect the MAUSB-100 and install the device driver again.	7
5	The [Removable Disk] icon does not appear after installation and connection. [!] or [?] appears in Device Manager.	The MAUSB-100's USB connector or the USB extension cable is not connected properly to the computer.	Fully insert the USB connector.	11
		The Universal Serial Bus Controller is Disabled. (Only for Windows Me/2000/XP) (If you are using Windows 98/98 SE, refer to Column 3.)	Change the Controller settings on [Universal Serial Bus Controllers] by selecting [Start] - [Setting] (only for Windows Me/2000) - [Control Panel] - [System] - [Hardware] - [Device Manager]. ([X] appears on the controller's name. Select [Enable] by right-clicking from the pop-up menu.)	—
		The USB port is disabled in the BIOS settings.	Set the USB port to "Enable" in the BIOS settings, referring to your computer's instruction manual.	—
6	The MAUSB-100 does not recognize the card. [Please insert a disk into drive L:]* appears.  *When the Removable Disk is recognized as the L drive.	The card is not inserted correctly.	Make sure that the card is inserted correctly.	10, 21

# Troubleshooting

## Windows

	PROBLEM	CAUSE	SOLUTIONS	REF. PAGE
7	The red and green status lamps are blinking slowly.	The card was not recognized correctly.	Disconnect the MAUSB-100 from the computer, remove the card from the MAUSB-100, then wipe the contact area with a dry cloth, and insert the card again. If the problem persists, the card may be damaged.	13, 24
8	You can read a card, but not write to it.	There is a problem with the card.	Copy the data to a different card, then use the new card for writing.	—
		The write-protect switch is set to ON.	Set the write-protect switch to OFF.	10, 21

## Macintosh

	PROBLEM	CAUSE	SOLUTIONS	REF. PAGE
1	The green status lamp does not light.	The MAUSB-100 is not connected correctly to the computer's USB port.	Make sure that the MAUSB-100 is facing the right way and connect it to the computer's USB port firmly.	32, 37
		The power supply from the USB port is insufficient.	If you are using a USB hub, it may not function properly with the MAUSB-100. Connect the MAUSB-100 directly to the computer.	5
2	No card icon appears on the computer's screen.	The card is not inserted correctly.	Make sure that the card is inserted correctly.	31, 36
		File Exchange is not installed on your computer. (Mac OS 9)	You must have File Exchange (provided with Mac OS) to read/write a DOS/Windows formatted card. (Check Control Panels under the Apple menu to see if File Exchange is installed. For more details, refer to Mac OS [Help].)	30
3	The red and green status lamps are blinking slowly.	The card was not recognized correctly.	Disconnect the MAUSB-100 from the computer, remove the card from the MAUSB-100, then wipe the contact area with a dry cloth, and insert the card again. If the problem persists, the card may be damaged.	33, 38
4	You can read a card, but not write to it.	There is a problem with the card.	Copy the data to a different card, then use the new card for writing.	—
		The write-protect switch is set to ON.	Set the write-protect switch to OFF.	31, 36

# Specifications

<b>Supported Cards</b>	<b>xD-Picture Card</b>	3.3 V	16/32/64/128/256/512MB
<b>Interface</b>			USB Ver.2.0/Ver.1.1
<b>Operating voltage</b>			5V $\pm$ 10% (Powered via USB port)
<b>Power consumption</b>			0.3A Max. (Main unit only)
<b>Operating environment</b>	Temperature	0°C - 40°C (41°F - 104°F)	
	Humidity	20% - 80% (No condensation)	
<b>Storage environment</b>			-20°C - 60°C (-4°F - 140°F)
<b>Dimensions (L x W x H)</b>	Main unit	67.2 x 28.3 x 13.8 mm (Not including the cap and protrusions) (2.8" x 1.2" x 0.6")	
	USB extension cable	Approx. 1.2 m (3.9 ft.)	
<b>Weight</b>	Main unit	Approx. 13 g	
	Cap	Approx. 6 g	
<b>Supported computers</b>			Any of the following computers with a USB interface (USB Ver. 2.0 and Ver. 1.1 compatible) and CD-ROM drive* <ul style="list-style-type: none"> <li>• IBM PC/AT compatibles</li> <li>• Power Mac G3/G4</li> <li>• PowerBook G3/G4</li> <li>• iMac series</li> <li>• iBook series</li> <li>• eMac series</li> </ul>
<b>Supported operating systems</b>			Any of the following pre-installed operating systems <ul style="list-style-type: none"> <li>• Windows 98</li> <li>• Windows 98 SE</li> <li>• Windows Me</li> <li>• Windows 2000 Professional</li> <li>• Windows XP</li> <li>• Mac OS 9.0 - 9.2.2</li> <li>• Mac OS X (v10.1.2 or later)</li> </ul>

\* A CD-ROM drive is necessary to install the device driver/utility software.

- The specifications in this manual are subject to change without prior notice.
- For the latest information, visit the OLYMPUS web site (<http://www.olympus.com>).

# Glossary of Terms

<b>Device Driver (Driver)</b>	A program used to operate or manage a peripheral device (printer, modem, digital camera, USB reader/writer, etc.). Without the proper driver installed, a peripheral device will not be recognized by the computer.
<b>Dialogue</b>	A window that appears on the monitor when the computer requires user confirmation or instructions on what to do. This is also called a Dialogue Box or Dialogue window.
<b>Drag &amp; Drop</b>	A method used to move data (such as text or icons) on the screen. To drag and drop, click and hold the left mouse button over the highlighted selection and move the mouse (drag). Then, release the mouse button over the window where the data is to be copied or moved (drop).
<b>Explorer</b>	A file-managing application provided with the Windows OS. Explorer allows the user to easily create, move, delete, or copy files and folders. Explorer organizes all drives and files/folders and displays them in hierarchical order in a single window.
<b>FAT (File Allocation Table)</b>	<p>A file system used in MS-DOS or Windows to keep track of file locations on a particular volume such as a hard disk. FAT is technically the part of a memory device that contains file-locating information.</p> <p><b>Related terms</b></p> <p>NTFS (NT File System): A file system supported by Windows 2000/XP.            FAT32: A file system supported by Windows 95 OSR 2.0 or later.</p>
<b>File</b>	A group of data, such as a document comprised of text and images.
<b>Folder</b>	A location where files are stored. If a file were compared to a book, a folder would be the shelf that stores the book. Creating a folder inside of a folder allows deeper hierarchical classification.
<b>Format</b>	Determines how data is written to a memory device such as a hard disk or floppy disk. To format, or to initialize, means to erase all existing data in a memory device. When referring to a digital camera, formatting means to allow the memory device to be read/written on the camera. Be aware that each OS uses different formats, and that formatting a memory device will erase the data currently stored on it.
<b>Hot Plug</b>	A function included in the USB standard that allows you to connect/disconnect a USB device such as the MAUSB-100 to/from the computer while the computer's power is on.
<b>Icon</b>	A small graphical image used to represent a file or folder created by the user or an installed application. Clicking or double-clicking an icon will open the file or folder, or launch the application.
<b>Install</b>	<p>Copies a new application to the computer and automatically configures it for use.</p> <p><b>Related terms</b></p> <p>Uninstall : Removes an installed application from the computer.            Preinstalled : Describes an application already installed on the computer at the time of purchase.</p>
<b>Removable disk</b>	A disk that is not permanently attached to the computer like a hard disk. Examples of removable disks include CD-ROMs, floppy disks, and magneto-optical disks (MO). xD-Picture Card is treated as a removable disk when inserted in the MAUSB-100.
<b>Taskbar</b>	A bar that displays all running files and applications as buttons in Windows. Normally, it is displayed at the bottom of the screen. Clicking a button on the taskbar can bring up a window or launch an application. The taskbar also includes other functions such as a clock, as well as a Start button that organizes applications so they can be launched more easily.

# Glossary of Terms

<b>USB</b> (Universal Serial Bus)	An interface that connects computers with peripheral devices (printers, modems, digital cameras, etc.). The USB interface is becoming increasingly common thanks to its ease of use, which makes it more likely to be the standard interface in the future.
<b>USB Bus Power</b>	Power supply via USB connection. Power is supplied to the MAUSB-100 from the connected computer via the USB interface.
<b>USB Mass Storage Class</b>	A USB device such as a floppy disk or hard disk recognized as a drive by the connected computer. Defined by the USB Implementers Forum according to USB specifications.
<b>USB 2.0</b> (Universal Serial Bus 2.0) (Hi-Speed USB 2.0)	A hi-speed interface which allows data transfer 40 times as fast as USB 1.1. Can also be connected to an USB 1.1 interface.
<b>xD-Picture Card</b>	A memory device used to store data such as images taken by digital cameras. The MAUSB-100 can be used to transfer data between an xD-Picture Card and a computer.

