

OLYMPUS



Dock&Done

Thank you for purchasing this OLYMPUS HD Storage S-HD-100. This guide contains instructions for basic operations to use the storage immediately after purchase. For details on operations and handling of CD-ROM, refer to the supplied user's manual. For inquiries, contact the OLYMPUS service center on the back cover of the user's manual.

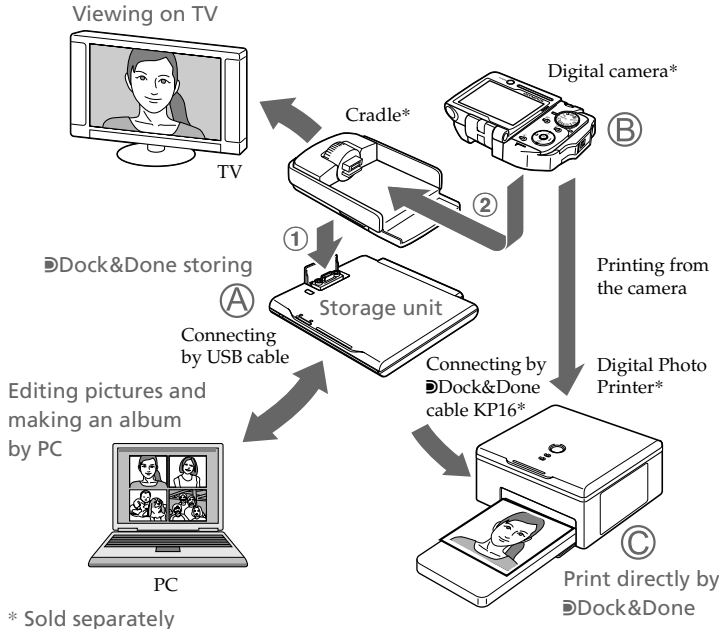
NG038501

Your new life of photography has begun.

With the advent of digital photography, people are taking more pictures, but many of those pictures just wind up sitting in a folder on some computer hard disk drive. All this is about to change now that Olympus has come up with a new way to let users truly integrate digital photography into their daily lives: "Dock&Done".

What is Dock&Done?

Dock&Done is a total system that puts personal imaging into a single process. For example, by simply setting the digital camera on the cradle, new pictures are saved, photo printing is prepared, and the camera's batteries are recharged.



A Dock&Done-compatible storage unit (S-HD-100)

Image files can be stored easily by connecting the Dock&Done digital camera. The camera battery is recharged at the same time.

B Dock&Done-compatible digital camera

By setting the camera on the cradle when used in combination with the Dock&Done-compatible storage unit, storing images and battery charging can be done with ease.

C Dock&Done-compatible digital photo printer

By connecting to the Dock&Done-compatible storage unit with the Dock&Done cable KP16, storing images and photo printing can be done with ease.

PC

By connecting your PC to the Dock&Done storage unit, you can store pictures to your PC for organizing and editing.

TV

The image files inside the camera can be displayed here instead of on the LCD monitor in the Dock&Done digital camera.



Tip

Availability of these models may vary from country to country.

User registration

To stay informed of important updates and news regarding your Olympus product, it is recommended to register your purchase. You can register by one of the following ways:

- Register online
Install the OLYMPUS Master software from the supplied CD-ROM. When restarting your computer after installation, the registration screen appears.
- Use the registration card*
Fill out the supplied registration card, and return it by mail.
* Not provided in some areas.

Dock&Done mode and PC mode

The storage unit supports the Dock&Done and PC modes. The available functions vary depending on the selected mode.

Dock&Done mode

Once the Dock&Done-compatible digital camera cradle is docked, and a printer (P-S100, etc.) is connected to the storage unit, you can store image files, print images specified in the print order information, and charge the camera's battery simply by setting the digital camera (i:robe IR-500, etc.) on the cradle.

- Connecting a digital camera: When connecting a Dock&Done-compatible digital camera, you do not need to attach any cables because the cradle of the digital camera docks directly to the storage unit; just set the digital camera on its cradle.
- Automatic saving of image files: You can automatically store image files taken with a Dock&Done-compatible digital camera simply by setting the digital camera on the storage unit.
- Automatic printing of image files: When a Dock&Done-compatible printer is connected, you can print the image files specified in the print order information with a single action.

PC mode

When the storage unit is connected to a PC, you can manage and edit image files stored on the hard disk by using the supplied OLYMPUS Master.

- Image file management using OLYMPUS Master software: When the storage unit is connected to a PC, the PC automatically recognizes the storage unit and any printer or digital camera connected to the storage unit.
- Use as a hub: You can use the storage unit as an external hard disk drive when connected to a PC.

Using in the Dock&Done mode

Shoot pictures and make print reservations with your digital camera in advance. For details on using the digital camera, refer to the reference manual supplied with the digital camera.

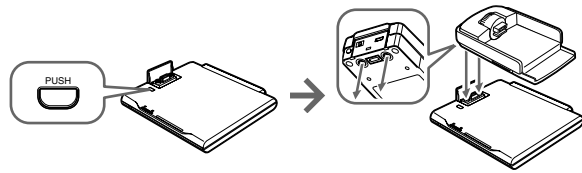
Connect with the printer and the digital camera

Note

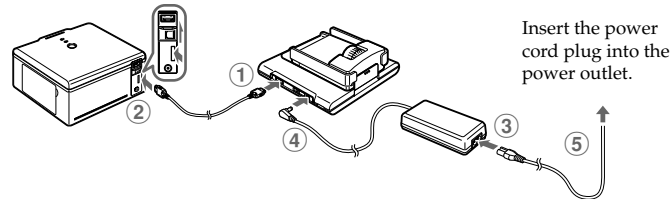
Make sure the power of the storage unit is off before connecting.

Example: When connecting the digital camera IR-500 and the printer P-S100. Display items on the camera monitor and the shape of the camera cradle differ depending on the digital camera.

- 1 Dock the cradle of the digital camera to the storage unit.



- 2 Connect the printer and the storage unit with the Dock&Done cable KP16 (sold separately), connect the AC adapter and power cord to the storage unit, then turn the printer on.



Insert the power cord plug into the power outlet.

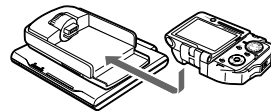
- 3 Set the Dock&Done mode/PC mode switch to "DOCK," then turn the storage unit on.



Notes

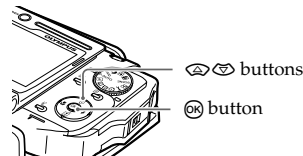
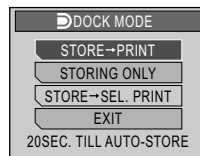
- Before switching from PC mode to Dock&Done mode, perform the PC hardware removal procedure in order to prevent a loss of data.
- Do not switch to the PC mode while the storage unit is processing in the Dock&Done mode. The operating mode switches when the processing is complete.

- 4 Set the digital camera on the cradle.



- 5 Operate the digital camera to select the desired store option on the digital camera.

- ① Press the / button to select the desired item.



"STORE → PRINT"

Stores only the newly taken image files of the digital camera, and prints the image files with the print order.

"STORING ONLY"

Stores only the newly taken image files of the digital camera.

"STORE → SEL. PRINT"*

Stores only the newly taken image files of the digital camera, and the print setting screen appears.

"EXIT"

Closes the "DOCK MODE" menu without storing or printing.

* The same setting as PictBridge mode. For details on the print settings, refer to the reference manual supplied with the digital camera.

- ② Press the button.

The ACCESS indicator (blue) blinks while storing (the ACCESS indicator on the printer blinks while printing).

Notes

- Do not turn off the storage unit, or disconnect its cable while the ACCESS indicator (blue) is blinking, otherwise a store or print error may result. The status of storing/printing or error messages are displayed on the LCD screen of the camera.
- Do not remove the camera while the ACCESS indicator (blue) is blinking. In this case, use the camera to cancel the process before removing.

Tips

- The storage unit starts storing image files automatically if no menu operation is performed within 20 seconds.
- To cancel storing/printing, press the button on the camera, select "CANCEL," then press in the confirmation screen. When storing/printing is canceled, the camera will turn off and automatically enter charge mode.
- Print order information is not cleared automatically when a print is executed. Cancel the print order setting manually.
- If the storage unit is in the Dock&Done mode, the connected digital camera and the printer are not accessible from the connected PC.

Using in the PC mode

Be sure to use the supplied OLYMPUS Master software when storing image files from the connected PC, or browsing, editing, printing, or managing image files on the HD storage. For details, refer to the instruction manual supplied.

Note

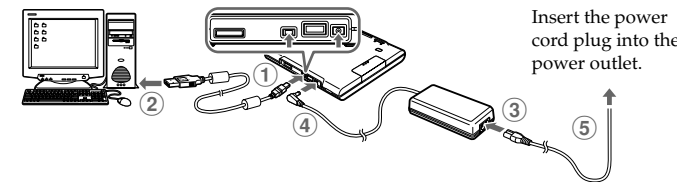
Be sure to use the OLYMPUS Master software supplied with the storage unit. The OLYMPUS Master software supplied with the digital camera may not work properly.

Connecting with a PC

Note

Make sure the power of the storage unit is off before connecting.

- 1 Connect the storage unit to a PC using the USB cable.



Insert the power cord plug into the power outlet.

- 2 Set the Dock&Done mode/PC mode switch to "PC," then turn the storage unit on.



Notes

- Do not change the setting of the Dock&Done/PC mode switch during data transfer. If the mode is changed, data transfer stops and data is not stored correctly.
- Do not disconnect the USB cable during data transfer, otherwise transfer will stop and may cause data corruption.