

OLYMPUS

CAMERA

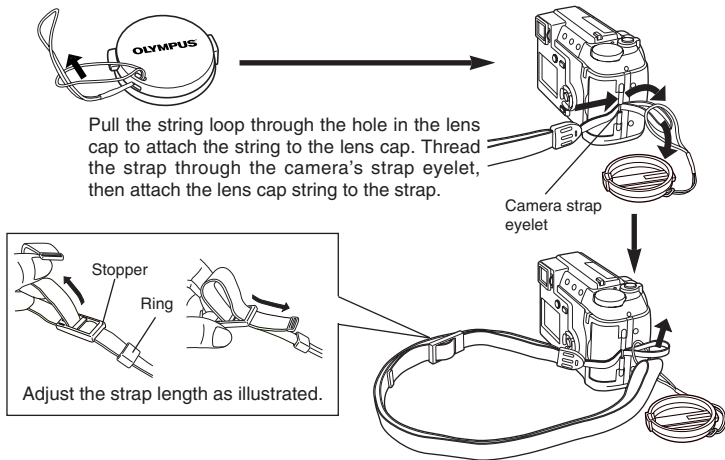
C-720 Ultra Zoom

Quick-start guide

We've included this convenient Quick-Start Guide to show you basic functions and techniques that will help you quickly master your new camera. For more detailed descriptions of procedures, as well as for additional information on more sophisticated features not covered here, please refer to the printed "Basic Manual", or the primary "Reference Manual" on the CD-ROM.

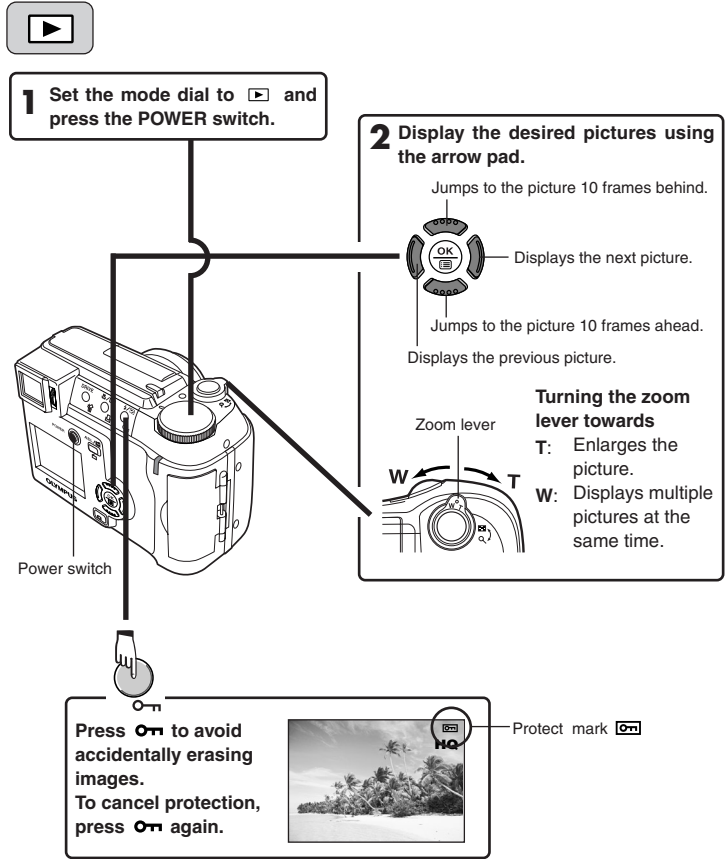
Package contents	
<input type="checkbox"/> Camera	<input type="checkbox"/> CD-ROMs with Windows 98 USB driver software, Reference manual, and more.
<input type="checkbox"/> Strap	<input type="checkbox"/> Warranty card/Registration card (not provided in some areas)
<input type="checkbox"/> CR-V3 lithium battery pack (2 packs)	<input type="checkbox"/> Safety Precautions (booklet)
<input type="checkbox"/> Video cable	<input type="checkbox"/> SmartMedia
<input type="checkbox"/> USB cable	<input type="checkbox"/> Static-free case
<input checked="" type="checkbox"/> Basic manual	<input type="checkbox"/> Index labels (2 pieces)
<input checked="" type="checkbox"/> Quick-start guide	<input type="checkbox"/> Write-protect adhesive seals (4 pieces)
<input type="checkbox"/> Software installation guide (included in the CD-ROM package)	<input type="checkbox"/> SmartMedia instructions

Attaching the strap

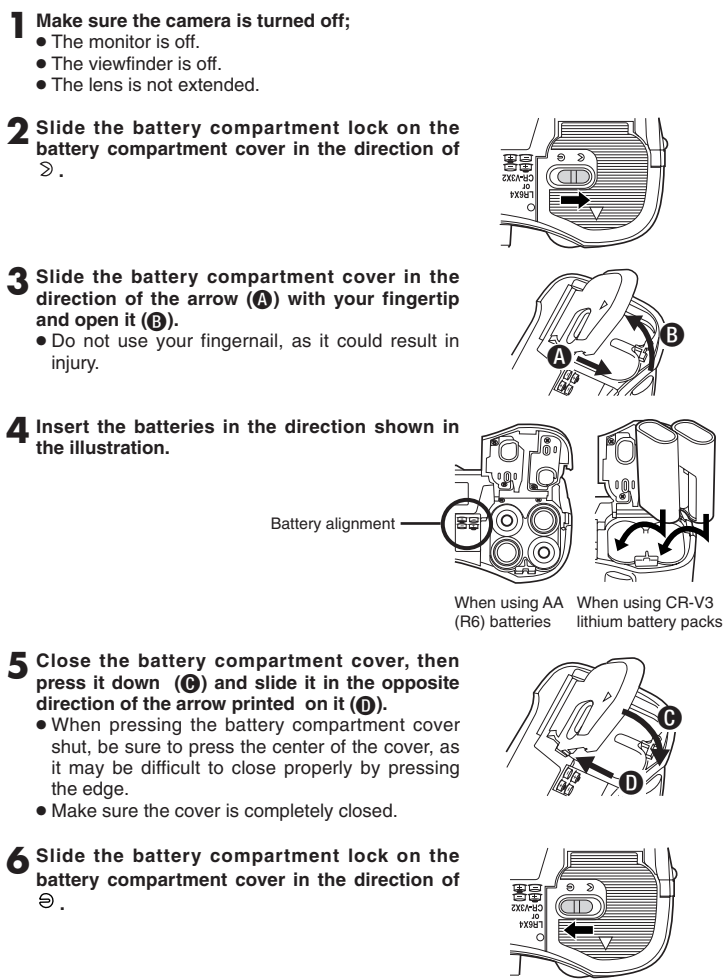


Printed in Japan VT360301

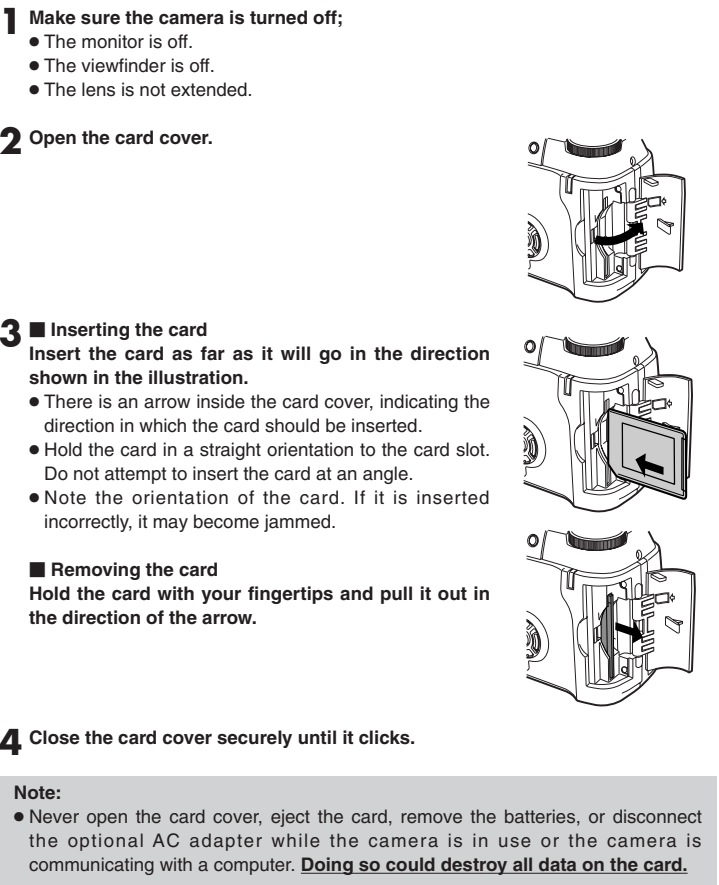
Viewing still pictures



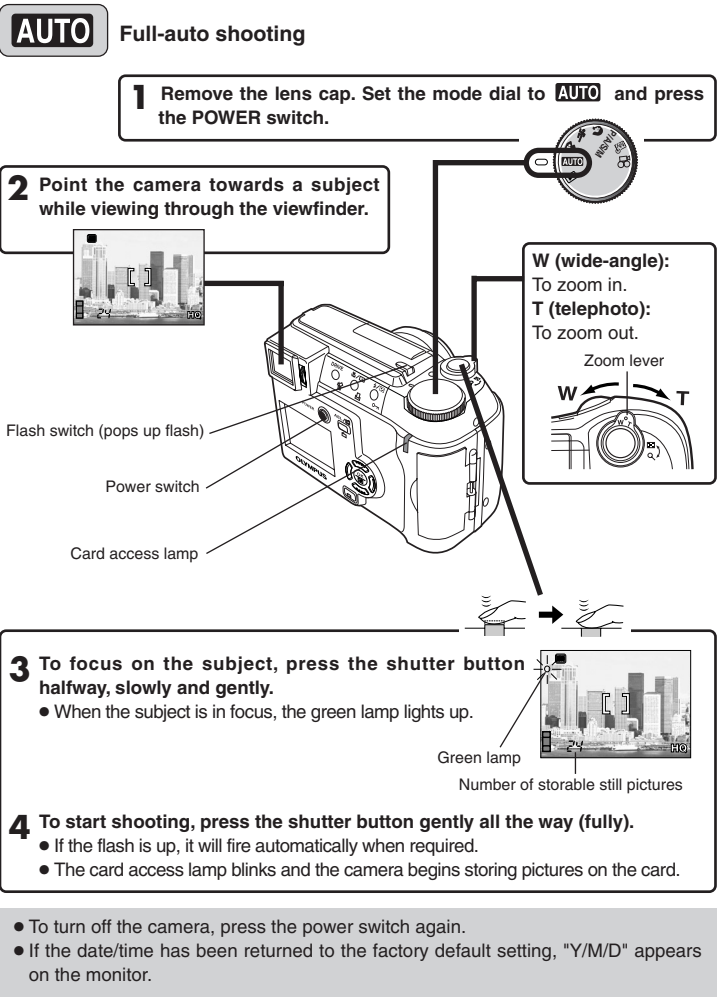
Loading the batteries



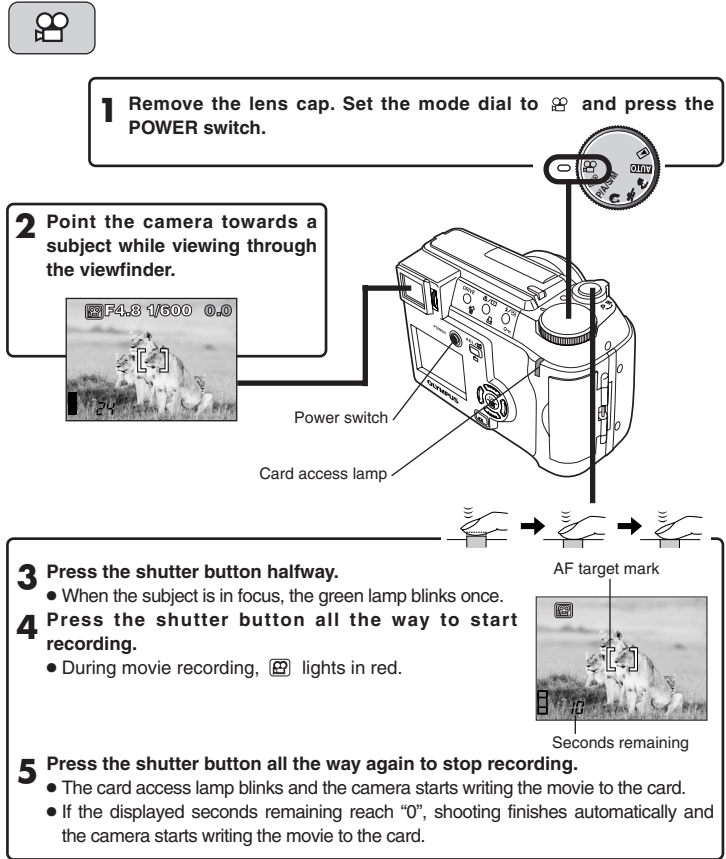
Inserting/Removing the memory card (SmartMedia)



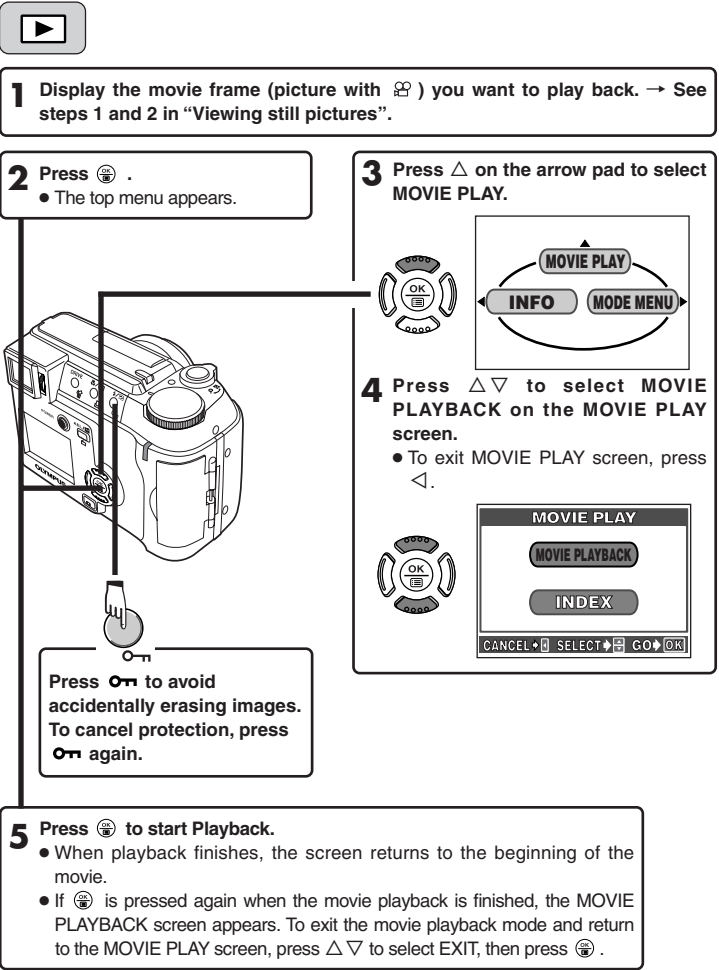
Taking still pictures



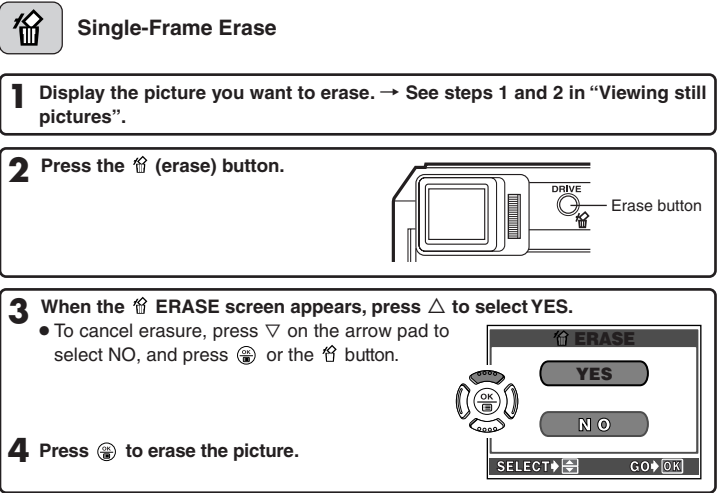
Recording movies



Playing back movies



Erasing pictures



OLYMPUS AMERICA INC.
Two Corporate Center Drive, Melville, NY 11747-3157, U.S.A. Tel. 1-631-844-5000
24/7 online automated help: <http://support.olympusamerica.com/>
Phone customer support: Tel. 1-888-553-4448 (Toll-free)

OLYMPUS OPTICAL CO. (EUROPA) GMBH.
Premises/Goods delivery: Wendenstrasse 14-18, 20097 Hamburg, Germany
Tel. 040-237730
Letters: Postfach 10 49 08, 20034 Hamburg, Germany

OLYMPUS
<http://www.olympus.com/>

Buttons and Dial

Zoom lever

Shooting W/T : Zooms in/out.
Playback / : Displays multiple pictures at the same time (Index-display), or enlarges pictures (close-up playback).

Shutter button

Focuses (half press) or shoots (fully press).

Mode dial

AUTO **Full-auto** : Full automatic exposure with one press of the shutter button.
Landscapes-Portrait : Both subject and background are in focus.
Sports : Suitable for capturing fast-moving action without blurring.
Portrait : Renders in-focus subject against a blurred background.
P/A/S/M : The camera sets optimal focusing and exposure, or the user sets aperture and/or shutter speed manually.
(Program/Aperture priority/Shutter priority/Manual shooting)
My mode : Activates your customized settings.
 : Records movies.
Playback : Plays back a picture.

Flash switch

Pops up the flash.

Viewfinder

Shooting : View subjects while shooting.
Playback : Displays recorded images.

Diopter adjustment dial

Adjust the diopter for the best viewfinder focus.

DRIVE button

Shooting : Selects sequential mode.
DRIVE **No indication** Single-frame shooting
 Shoots pictures sequentially. Focus, exposure and white balance are locked at the first frame.
 Shoots pictures sequentially. Focus is locked automatically for each frame.
 Self-timer shooting
BKT Shoots pictures sequentially. Exposure is changed automatically for each frame (auto-bracketing).
Playback : Erases pictures one-by-one.

Macro/Spot button

Shooting : Activates macro mode or metering mode.
 /

- Macro (close-up) shooting
Wide: 0.1 m - 0.6 m (0.3 ft - 1.9 ft)/Tele: 1.0 m - 2.0 m (3.2 ft - 6.5 ft)
- Spot metering
Meters within the AF target on the viewfinder. (Normally, digital ESP is activated. Digital ESP meters the center of the subject and the area around it.)
- / During macro mode shooting, spot metering is activated.

Playback : Print reserve

Flash mode button

Shooting / : Selects flash modes. (Normally, the flash fires in low-light and backlight conditions.)
 Minimizes "red-eye" phenomena.
 Always fires.
 Adjusts the flash for slow shutter speeds.
 / Adjusts the flash for slow shutter speeds and minimizes "red-eye".
 Prevents the flash from firing (only when it is pushed down into the camera).
Playback : Prevents pictures from being erased accidentally.

AE lock/Custom button

Shooting **AEL** / : AEL Locks exposure.
 Performs whichever function you have set for it.
Playback : Rotates a picture.

Arrow pad

Menu : Selects/adjusts the menu functions and items.
Shooting : Sets aperture/shutter speed/exposure compensation values.
Playback : Selects pictures to be displayed.

Monitor button

- Turns the monitor on/off.
- Press quickly two times to play back the last recorded image.

Monitor

Shooting : View subjects while shooting.
Playback : Displays recorded images.

POWER switch

Turns the camera on/off.

Menu functions

Moving around the Menu screen

1



Press

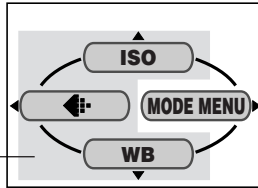
Note:
The Top menu and available menu functions vary depending on the mode. (See the Reference Manual for more details.)

2



to select

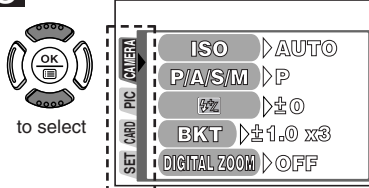
Top menu (Mode dial: "P")



The top menu functions can be changed to your liking in the "P/A/S/M" and modes (SHORT CUT setting).

3

If you select MODE MENU in step 2



to select

4



to enter each menu

CAM Brings up CAMERA menu
PIC Brings up PICTURE menu
CARD Brings up CARD menu
SET Brings up SETUP menu

Menu functions during shooting

CAMERA

ISO	Adjusts the ISO sensitivity. (AUTO/100/200/400)
P/A/S/M	Exposure mode can be selected from P (Program auto), A (Aperture priority auto), S (Shutter priority auto), or M (Manual mode).
	Adjusts the flash intensity.
BKT	Sets the conditions for Auto bracketing.
DIGITAL ZOOM	Combining the digital zoom with the 8x optical zoom, makes possible zoom magnification up to approx. 24x (equivalent to 40 mm - 320 mm on a 35 mm camera).
PANORAMA	Enables you to take panorama pictures using the card's panorama function.
2 in 1	Combines two pictures taken in succession and stores them as a single picture

PICTURE

	Sets the record mode resolution. (TIFF/SHQ/HQ/SQ1/SQ2)
WB	Adjusts the white balance according to the light source.
SHARPNESS	Adjusts the sharpness of images.
CONTRAST	Adjusts the contrast of images.

CARD

CARD SETUP || Formats cards (all images on the card are deleted).

SETUP

ALL RESET	Selects whether to keep the current camera settings when you turn off the power.
INFO	Changes the amount of shooting information displayed on the viewfinder/monitor. Turns off the beep sound (used for warnings, etc.).
REC VIEW	Selects whether to display images while saving them to a card.
MY MODE SETUP	Customizes settings, which are activated in the mode.
SLEEP	Sets the sleep timer.
FILE NAME	Determines how files and folders will be named for saved images. (RESET/ AUTO)
PIXEL MAPPING	Checks the CCD and image processing circuit for errors.
	Adjusts the brightness of the viewfinder/monitor.
	Sets the date and time.
BATTERY SAVE	Enables camera operation with reduced power consumption.
SHORT CUT	Lets you assign frequently-used functions as shortcut menus on the top menu.
CUSTOM BUTTON	Lets you assign a frequently used function to the camera's custom button.

Menu functions during playback

(still pictures)

Runs through all saved pictures one after another (slide-show).

MOVIE PLAY (movies)

MOVIE PLAYBACK	Plays back movies.
INDEX	Shows 9-frame indexes of still-shots from movies in order to easily check the movies' contents.

INFO

Changes the amount of shooting information displayed on the viewfinder/monitor.

EDIT (still pictures)

BLACK& WHITE	Creates black and white pictures.
SEPIA	Creates sepia-toned pictures.
	Makes the file size smaller.

CARD

CARD SETUP || Formats cards (FORMAT), or erases all images on them (ALL ERASE).

SETUP

ALL RESET	Selects whether to keep the current camera settings when you turn the camera off.
	Turns off the beep sound (used for warning, etc.).
	Adjusts the brightness of the viewfinder/monitor.
	Sets the date and time.
	Selects the number of frames in the index display. (4/9/16-frame)