

QuickStart Guide

AZ-1

OLYMPUS AMERICA INC.
Two Corporate Center Drive, Melville,
NY 11747-3157, U.S.A.
<http://www.olympusamerica.com/support>

Olympus Europa GmbH
Wendenstrasse 14-18,
20097 Hamburg, Germany
<http://www.olympus-europa.com>

OLYMPUS®

<http://www.olympus.com/>

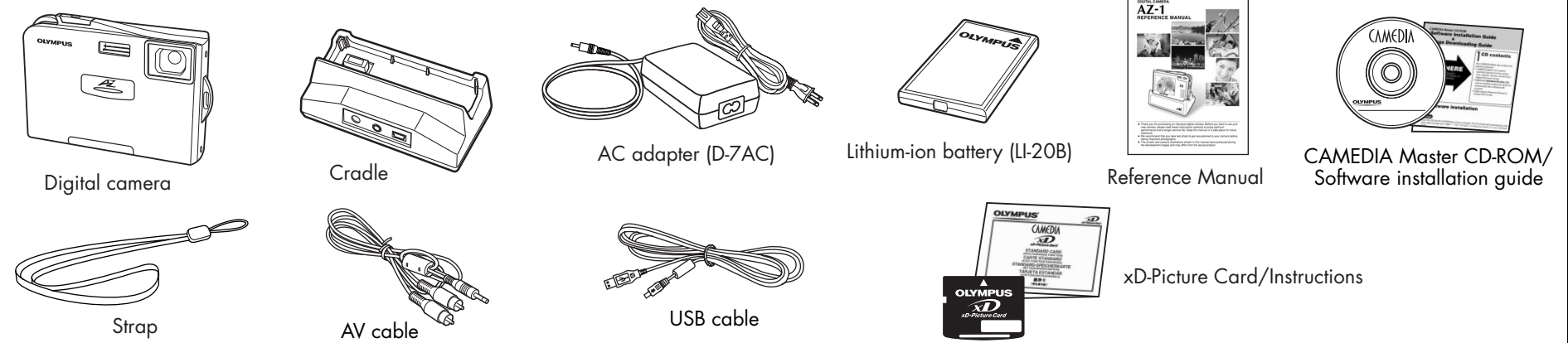
START HERE

It is strongly recommended that you follow these step-by-step numbered instructions to set up and quickly begin using your new Digital Camera.

For more detailed instructions on advanced features, please refer to the Reference Manual.

1 UNPACKING THE BOX CONTENTS

Gather your digital camera and the parts as shown in the illustration. You'll need these to complete the steps for the camera set-up procedures that follow.



The following items are also included in this package: lens cap, lens cap string, camera case, warranty card and registration card (not provided in some areas).

2 PREPARE THE CAMERA FOR USE

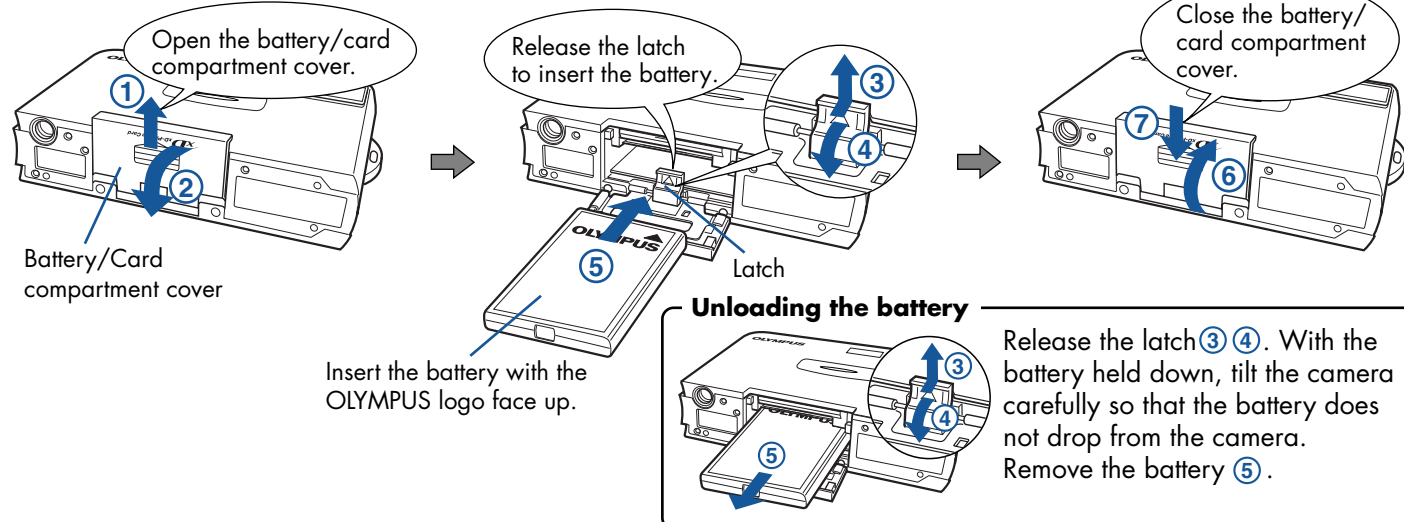
Before you begin using your Olympus digital camera...

a. Loading the battery

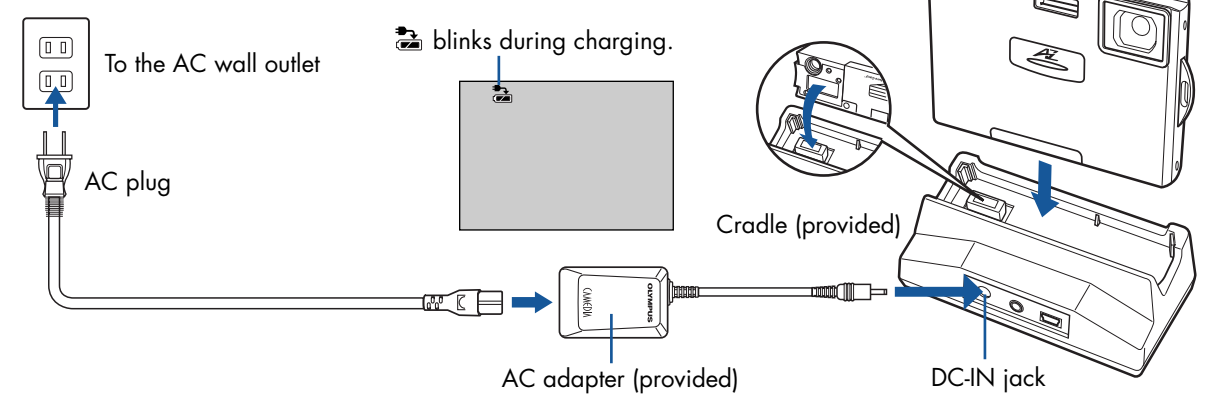
Slide the battery/card compartment cover in the direction of the arrow ①. The cover unlocks and opens in the direction of the arrow ②.

Gently push the latch backwards to lift it ③. When you take your finger off the latch, the latch drops back on its own ④. After the latch drops back, insert the battery ⑤.

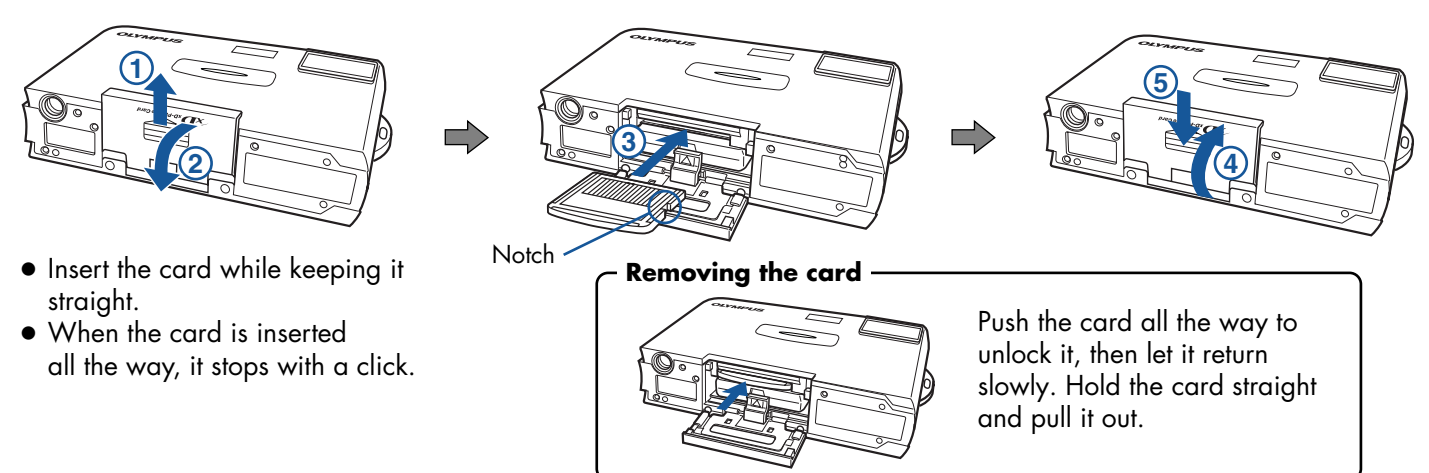
Push down firmly on the ⑥ section of the battery/card compartment cover ⑥, and slide it in the direction of the arrow ⑦. Closing the battery/card compartment cover locks the latch.



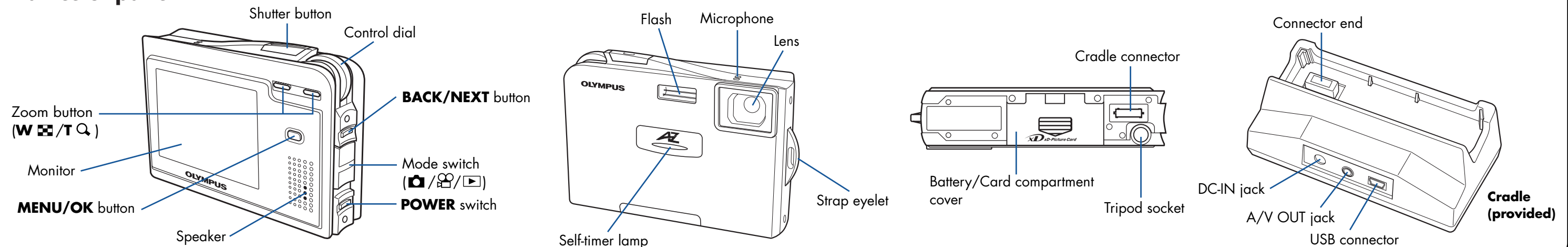
b. Charging the battery



c. Inserting the card



Names of parts



3 TURNING ON THE CAMERA

a. Power on/off

1 Lens cap
Remove this when taking pictures.

Monitor
Power on → Turns on the monitor.
Power off → Turns off the monitor.

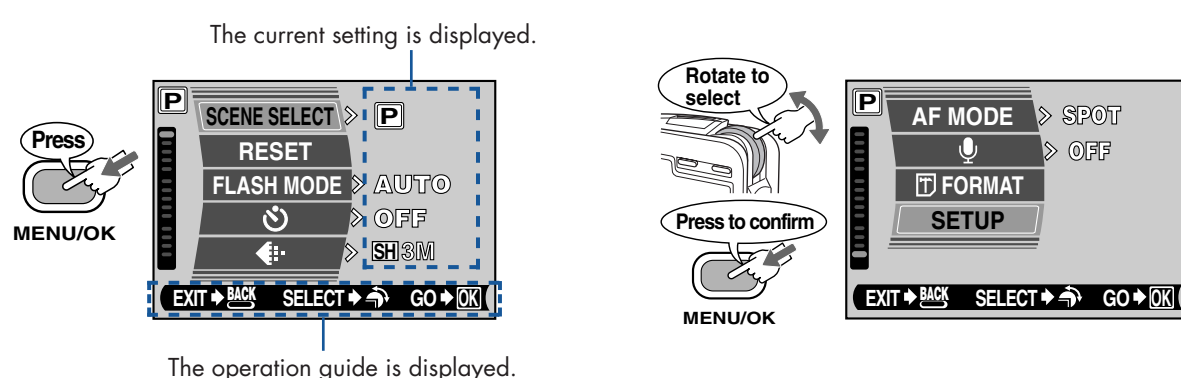
2 Mode switch
P : Select this for still pictures shooting.
S : Select this for movie shooting.
L : Select this for playback.

3 POWER switch
Turns the camera on and off.
* Check the date/time settings when the camera is turned on.

b. Menu & operation (date and time setting)

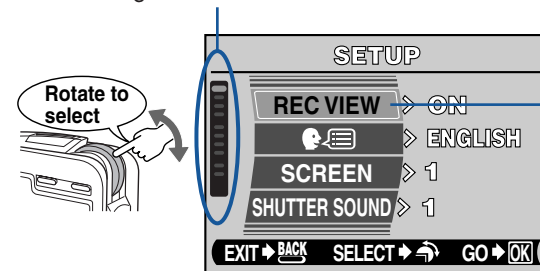
1) Display the menu.

2) Select SETUP.

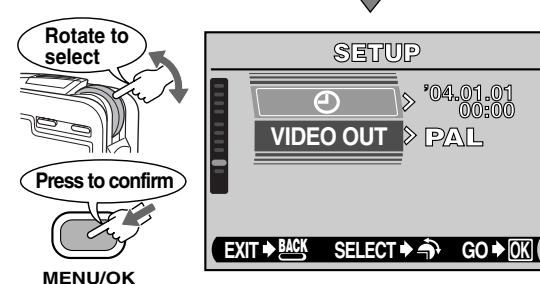


3) Select from the SETUP menu.

Indicates there are more menu items following SHUTTER SOUND.



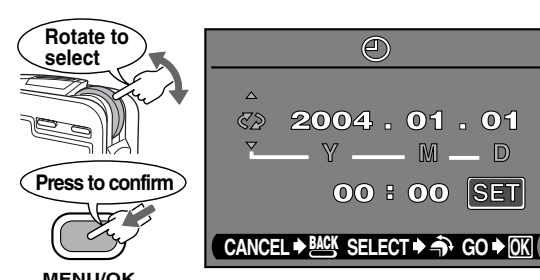
A white frame shows the currently selected item.



4) Set the date/time.

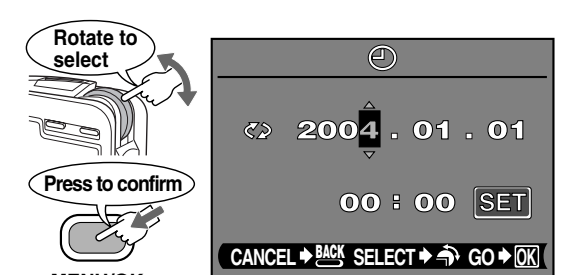
The following instructions show the procedure used when the date and time settings are set to Y-M-D.

Select the date format: [Y-M-D (Year/Month/Day)], [M-D-Y (Month/Day/Year)], [D-M-Y (Day/Month/Year)].



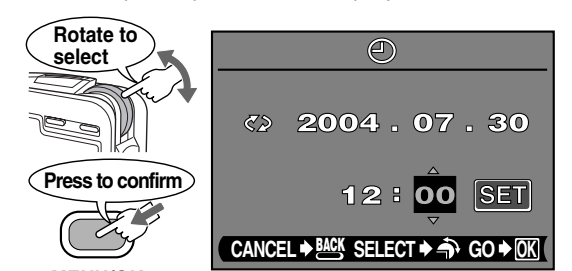
Set the date.

The "year" is highlighted. The first two digits of the year are fixed.



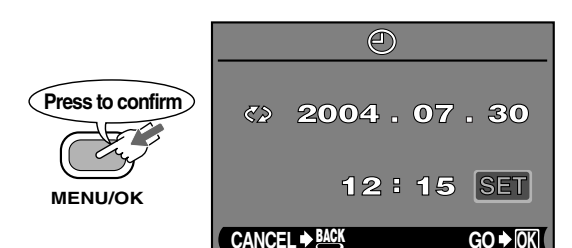
Repeat the procedure until the date and time are completely set.

The time is displayed in the 24-hour format. For example, 2 p.m. will be displayed as 14:00.



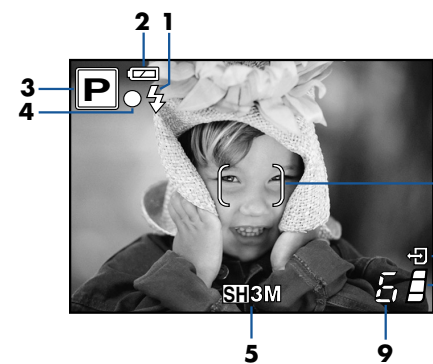
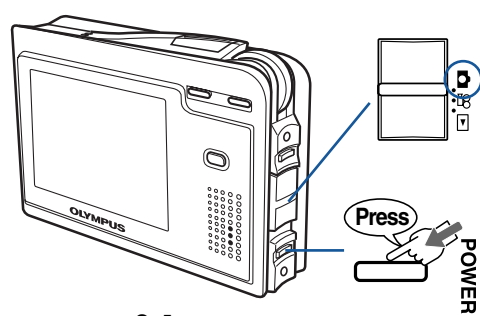
5) With the cursor on SET, press MENU/OK.

The clock starts after completing step 5.



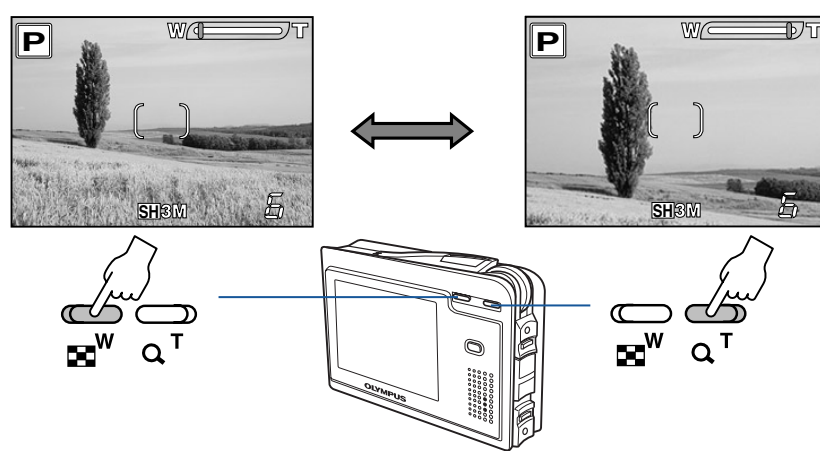
4 TAKING PICTURES

a. Turning on the camera in the mode



- | | |
|--|-------------------------------------|
| 1 Flash stand-by/
Flash charging mark | 5 Record mode |
| 2 Battery check | 6 AF target mark |
| 3 Shooting modes | 7 Card access mark |
| 4 Green lamp | 8 Memory gauge |
| | 9 Number of storable still pictures |

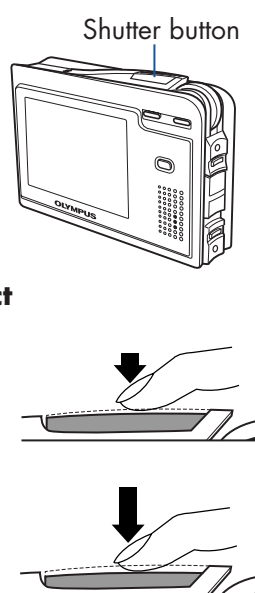
b. Zooming



c. Taking the picture

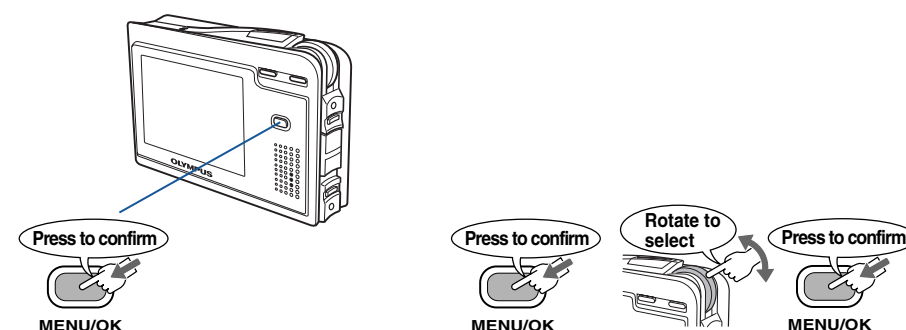
Position the AF target mark on the subject you want to focus on. Adjust the focus.
Press the shutter button gently (halfway).
○ Lights steadily when the focus is locked.
⚡ Lights when the flash fires.

Release the shutter.
Press the shutter button all the way (fully).



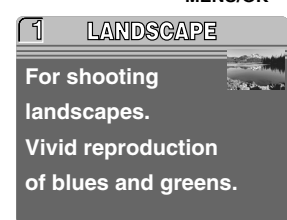
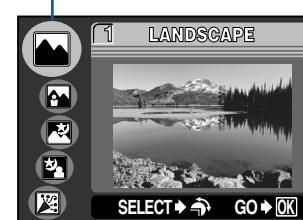
Using the situation-related shooting modes

- 1) Select SCENE SELECT, then SCENE in the menu.



- 2) Select the situation-related shooting mode.

Currently selected mode

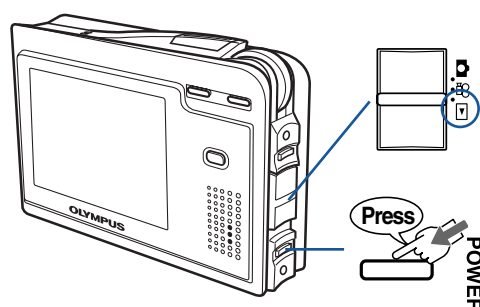


- Pressing the shutter button optimizes the settings for the selected shooting mode, such as NIGHT SCENE, CUISINE and SPORT, etc.

When the mode switch is set to , you can record movies.

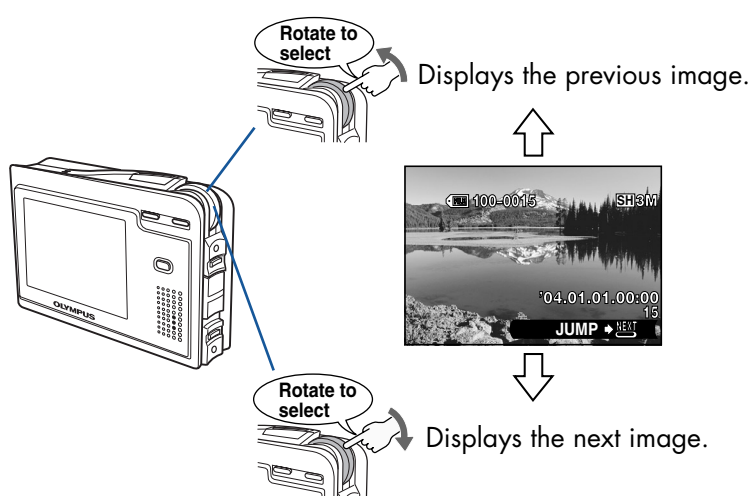
5 VIEWING AND ERASING IMAGES

a. Turning on the camera in the mode



- | | |
|-----------------|-------------------------|
| 1 Battery check | 6 Exposure compensation |
| 2 File number | 7 Date/time |
| 3 Record mode | 8 Frame number |
| 4 Resolution | 9 Operation guide |
| 5 White balance | |

b. Selecting images



Pressing **BACK/NEXT** switches the playback method between the one-by-one mode and the 10-frame jump mode.

● Close-up playback

Press the zoom button to enlarge it.
Press the zoom button to return to the original size (1x).

● Index display

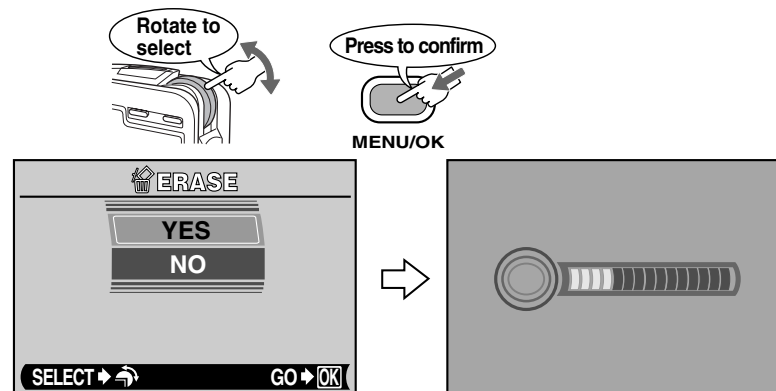
Press the zoom button . Rotate the control dial to move the frame to the desired image.
Press the zoom button . The screen returns to single-frame playback.

c. Erasing pictures [ERASE]

- 1) Select ERASE in the menu.
- 2) Select THIS IMAGE.



- 3) Select YES.



6 CONNECTING THE CAMERA TO A COMPUTER

You can connect your camera to a computer with the USB cable and transfer images stored on a card to the computer.

a. Windows 98 users must install the "USB Driver for Windows 98" software before connecting this digital camera to the computer.

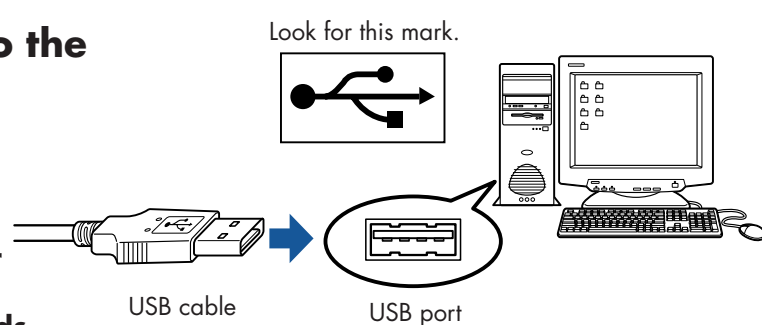
TIP: Non-Windows 98/98SE users, start at Step b.

- 1) Insert the provided software CD into your CD-ROM drive. The menu is displayed.
- 2) Select [USB driver for Windows 98].

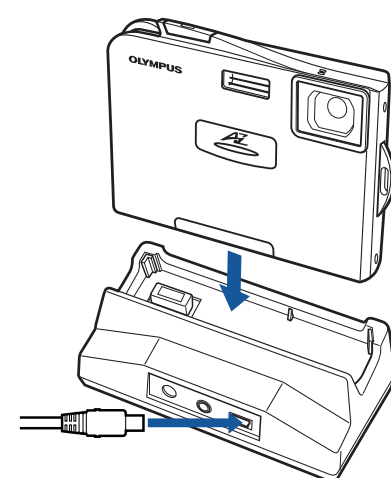
b. Connecting the camera to the computer

- 1) Insert the marked end of the provided USB cable into the USB port on your computer.

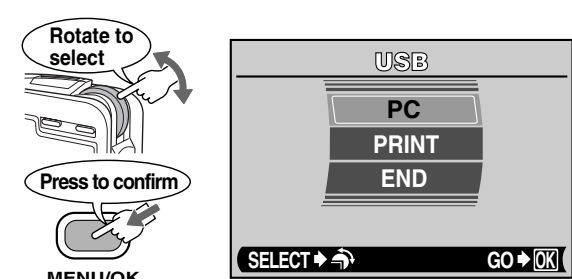
TIP: To ensure a consistent power supply when downloading images, Olympus recommends using the AC adapter.



- 2) Insert the provided USB cable into the USB connector on the cradle.
- 3) Attach the camera to the cradle.
 - The selection screen for the USB connection is displayed on the camera's monitor.



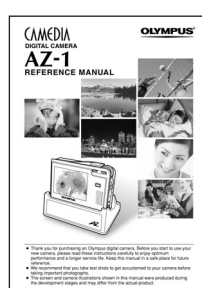
- 4) Select [PC] and press **MENU/OK**.
 - The computer recognizes the camera as a new device.



To use advanced features

For details on the camera's features and operations...

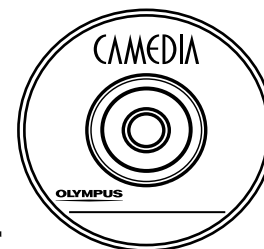
Refer to the Reference Manual.



- More than 20 scene modes to suit a wide range of shooting situations.
- Movie recording capability.
- Telephoto shooting with optical zoom and digital zoom.
- Direct printing on a PictBridge-compatible printer.
- Image can be transferred to a computer for editing and storage.
- Image management for grouping photos or creating photo albums.

Viewing images shot on a PC...

The provided software CD includes Olympus CAMELIA Master software for viewing and editing images.



- Install "CAMELIA Master".
- Complete the on-line user registration. Make sure that your PC is communicating with the Internet before submitting the registration.
- Makes it easy to edit your digital photos.