

M-AUDIO

ProFire 2626

**High-Definition 26-In/26 Out
Audio Interface with Preamps**

English
Quick Start Guide

Installation Instructions for Windows XP and Vista

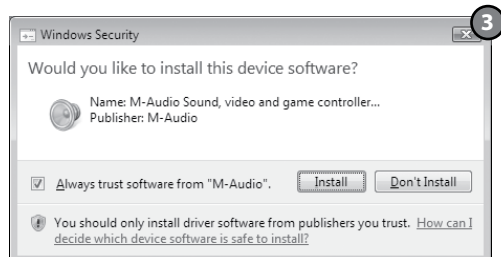
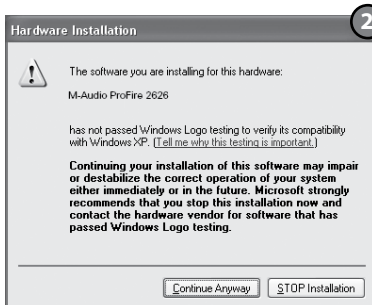
PLEASE NOTE: Make sure the ProFire 2626 interface is detached from your computer when beginning the installation. The following instructions will indicate when you should connect the interface to your computer.

1. We recommend that you download the most recent ProFire 2626 drivers by going to the Support > Drivers page at www.m-audio.com. This ensures that you have the newest drivers available. If you do not have Internet access, insert the FireWire Series CD-ROM into your computer to install the drivers that came with the interface.

- a. If you are installing drivers from the FireWire Series CD-ROM, the computer will automatically display the interactive install screen ❶ when the CD-ROM is inserted. If your computer fails to launch this application, you can manually start it by clicking on Start > My Computer > FireWire Series CD-ROM. Next, select ProFire 2626 from the menu and click "Install."

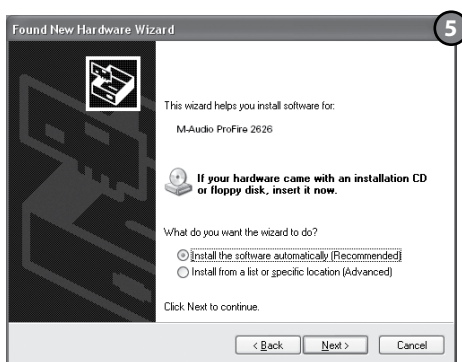
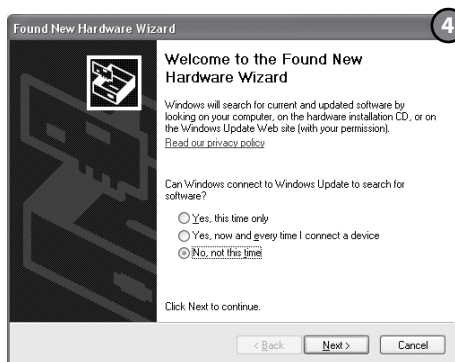


- b. If you are installing drivers from www.m-audio.com, simply double-click the file once it has finished downloading.
2. Follow the driver installer's on-screen instructions.
 3. At various points in this installation process, you may be notified that the driver being installed has not passed Windows Logo Testing, or asked whether the program you wish to run is a trusted application. Click Continue Anyway (Windows XP) ❷ or Install (Windows Vista) ❸ to proceed with installation.



4. Once the installer has completed, click "Finish."
5. Shut down your computer.
6. Connect ProFire 2626 to a power outlet and to an available FireWire port on your computer.
7. Turn on ProFire 2626 first, then turn on your computer. If you are using Windows Vista, your ProFire 2626 installation is now complete. If you are using Windows XP, proceed to steps 8-12.
8. Windows XP will identify the interface and will ask if you want to search the Internet for a driver. Select "No, not this time" and press "Next" ④.
9. Windows XP will display a Found New Hardware Wizard ⑤.
10. Choose "Install the software automatically" and click "Next."
11. Once the Wizard has completed, click "Finish." You may be presented with a second Found New Hardware Wizard. If so, then repeat steps 8-11.
12. When the installation is complete, you will see a message stating "Your new hardware is installed and ready to use."

ATTENTION: Only connect and disconnect your ProFire 2626 when your computer is powered off. Hotplugging may have adverse effects on the interface, your computer, or both. For more information on this subject, please visit the M-Audio knowledge base at www.m-audio.com.



Installation Instructions for Mac OS X

1. We recommend that you download the most recent ProFire 2626 drivers by going to the Support > Drivers page at www.m-audio.com. This ensures that you have the newest drivers available. If you do not have Internet access, insert the FireWire Series CD-ROM into your computer to install the drivers that came with the interface.
 - a. If you are installing drivers from the FireWire Series CD-ROM, a CD-ROM icon will appear on your desktop once the disc is inserted into your computer. Double-click this icon to view the contents of the disc. Next, double-click "Open Me." Finally, select your product from the drop-down menu on the welcome screen and click "Install."
 - b. If you are installing drivers from www.m-audio.com, the downloaded file should automatically mount and display its contents on the desktop. If this file does not mount automatically, simply double-click the file once it has finished downloading to view its contents. Next, double-click the installer application.
2. Follow the driver installer's on-screen instructions. During Installation, Mac OS X will ask you to enter your user name and password. Enter this information and click OK to confirm. If you have not configured a password for your computer, leave the password field blank and click OK. If you are not the computer's owner, ask the owner or your Administrator for the missing information.



3. When the installer has completed, click "Close."
4. Shut down your computer.
5. Connect ProFire 2626 to a power outlet and to an available FireWire port on your computer.
6. Turn on ProFire 2626 first, then turn on your computer

ATTENTION: Only connect and disconnect your ProFire 2626 when your computer is powered off. Hotplugging may have adverse effects on the interface, your computer, or both. For more information on this subject, please visit the M-Audio knowledge base at www.m-audio.com

Connecting Your Equipment to ProFire 2626

- ProFire 2626 has a total of 26 outputs which can be used for a variety of purposes. By default, analog outputs 1 and 2 serve as your "main" outputs. Connect channels 1 and 2 to the left and right inputs of your mixer, powered speakers, or other audio destination.
- ProFire 2626 accepts mic, line, and instrument-level input signals. Connect your microphones or line-level instruments (CD players, keyboards, mixers, etc.) to any available input on the rear-panel. If you plan to record the output of an electric guitar, bass, or other instrument-level device, connect these instruments to the front-panel inputs.

NOTE: If you plan to record using the front panel inputs, be sure that the Mic/Inst Button is in the "down" position.

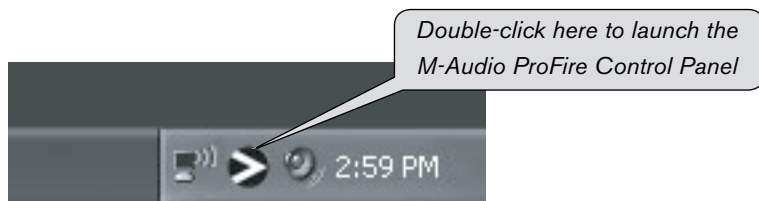
- If you own S/PDIF or ADAT equipment, connect it to the corresponding inputs of ProFire 2626 and use the ProFire 2626 control panel to configure the digital synchronization options accordingly. See the ProFire 2626 User Guide on the FireWire Series CD-ROM for more information.
- Connect your headphones to a 1/4" headphone output on the front panel.

For more information and an explanation of all available inputs and outputs as well as monitoring, routing and digital synchronization options, please refer to the ProFire 2626 User Guide located on the FireWire Series CD-ROM.

Accessing the Control Panel

The control panel allows users to configure various parameters and features of ProFire 2626.

Windows XP users can access the control panel by double-clicking the M-Audio ProFire icon in your computer's system tray.



To access the ProFire 2626 control panel in Windows Vista click on Start > Control Panel > Additional Options and then double-click the M-Audio ProFire icon.

Note: If you configured the Vista Control panel to be displayed in "Classic View," then the M-Audio ProFire icon can be found directly under Start > Control Panel.

Windows Vista
Start Button



Mac OS X users can launch the control panel by clicking the M-Audio ProFire icon found in the System Preferences panel.

For more detailed information about the parameters in the control panel, please refer to the ProFire 2626 User Guide on the FireWire Series CD-ROM.



Additional Information and Support

The M-Audio website (www.m-audio.com) contains the latest drivers and program updates as well as useful links to news stories, FAQs, and technical support. We recommend checking this site regularly to ensure you have the latest drivers and most up-to-date information about your M-Audio products.

Please check the M-Audio driver download page at <http://www.m-audio.com/drivers> for the availability of an updated driver before you decide to install operating system updates.

Before new M-Audio device drivers are released, they are tested for use with operating system versions that are available at that time. When updates for an operating system are released by Microsoft or Apple, all M-Audio device drivers have to be re-tested and possibly updated to ensure proper operation.

M-Audio recommends refraining from installing operating system updates until a driver has been posted to the M-Audio website for that specific operating system.

Warranty Terms and Registration

Warranty Terms

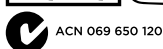
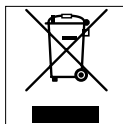
M-Audio warrants products to be free from defects in materials and workmanship, under normal use and provided that the product is owned by the original, registered user. Visit www.m-audio.com/warranty for terms and limitations applying to your specific product.

Warranty Registration

Immediately registering your new M-Audio product entitles you to full warranty coverage and helps M-Audio develop and manufacture the finest quality products available. Register online at www.m-audio.com/register to receive FREE product updates and for the chance to win M-Audio giveaways.

© 2007 Avid Technology, Inc. All rights reserved. Product features, specifications, system requirements and availability are subject to change without notice. Avid, M-Audio and ProFire 2626 are either trademarks or registered trademarks of Avid Technology, Inc. All other trademarks contained herein are the property of their respective owners.

WARNING: This product contains chemicals, including lead, known to the State of California to cause cancer, and birth defects or other reproductive harm. **Wash hands after handling.**



M-Audio USA

5795 Martin Rd., Irwindale, CA 91706

Technical Support

web www.m-audio.com/tech
tel (pro products) (626) 633-9055
tel (consumer products) (626) 633-9066
fax (shipping) (626) 633-9032

Sales

e-mail sales@m-audio.com
tel 1(866) 657-6434
fax (626) 633-9070

Web www.m-audio.com

M-Audio U.K.

Floor 6, Gresham House, 53 Clarendon Road, Watford
WD17 1LA, United Kingdom

Technical Support

e-mail support@maudio.co.uk
tel (Mac and PC support) . . . +44 (0)1753 658630

Sales

tel +44 (0)1923 204010
tel +44 (0)1923 204039

Web www.maudio.co.uk

Benelux

Technical Support

Belgium tel +32 22 54 88 93
Holland tel +31 35 625 0097

M-Audio France

Floor 6, Gresham House, 53 Clarendon Road, Watford
WD17 1LA, United Kingdom

Renseignements Commerciaux

tel 0 810 001 105
email info@m-audio.fr

Assistance Technique

PC 0 820 000 731
Mac 0 820 391 191
e-mail (PC) support@m-audio.fr
email (Mac) mac@m-audio.fr
fax +33 (0)1 72 72 90 52

Web www.m-audio.com

M-Audio Germany

Kuhallmand 34, D-74613 Ohringen, Germany

Technical Support

email support@m-audio.de
tel +49 (0)7941 - 9870030
tel +49 (0)7941 - 98 70070

Sales

e-mail info@m-audio.de
tel +49 (0)7941 98 7000
fax +49 (0)7941 98 70070

Web www.m-audio.de

M-Audio Canada

1400 St-Jean Baptiste Ave. #150, Quebec City,
Quebec G2E 5B7, Canada

Technical Support

e-mail techcanada@m-audio.com
tel (418) 872-0444
fax (418) 872-0034

Sales

e-mail infocanada@m-audio.com
tel (866) 872-0444
fax (418) 872-0034

Web www.m-audio.ca

M-Audio Japan

アビッドテクノロジー株式会社|エムオーディオ事業部:
〒460-0002 愛知県名古屋市中区丸の内2-18-10
Avid Technology K.K.:2-18-10 Marunouchi,
Naka-Ku, Nagoya, Japan 460-0002

カスタマーサポート (Technical Support)

e-mail
win-support@m-audio.jp
e-mail (Macintosh 環境専用)
mac-support@m-audio.jp
tel
052-218-0859(10:00~12:00/13:00~17:00)

セールスに関するお問い合わせ (Sales)

e-mail
info@m-audio.jp
tel
052-218-3375
fax
052-218-0875

Web
www.m-audio.jp

M-AUDIO

080208_Pf2626_QSG_EN01