

M-AUDIO

Delta Series



Quick Start Guide

IMPORTANT:

Do NOT install the Delta PCI card in your computer until the M-Audio drivers have been installed. The instructions below will indicate when the PCI card should be installed.

If your Delta interface includes an external “breakout box,” never connect the breakout box to the Delta PCI card while your computer is running. Always shut down the computer before connecting or disconnecting the host cable.

Installation For Windows XP Users

1. We recommend that you download the most recent Delta drivers by going to the Support > Drivers page at www.m-audio.com. This ensures that you have the newest drivers available. If you do not have Internet access, insert the Delta Series CD-ROM into your computer to install the drivers that came with Delta interface.
 - a. If you are installing drivers from the Delta Series CD-ROM, the computer will automatically display the interactive install screen ① when the CD-ROM is inserted. If your computer fails to launch this application, you can manually start it by clicking on Start > My Computer > Delta Series CD-ROM. Next, select your Delta interface from the drop-down menu and click “Install”.
 - b. If you are installing drivers from www.m-audio.com, simply double-click the file once it has finished downloading.

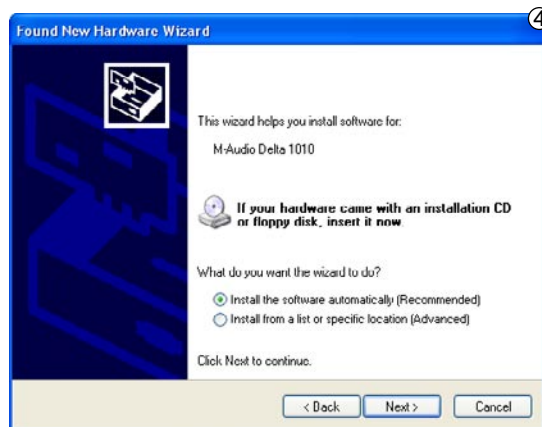
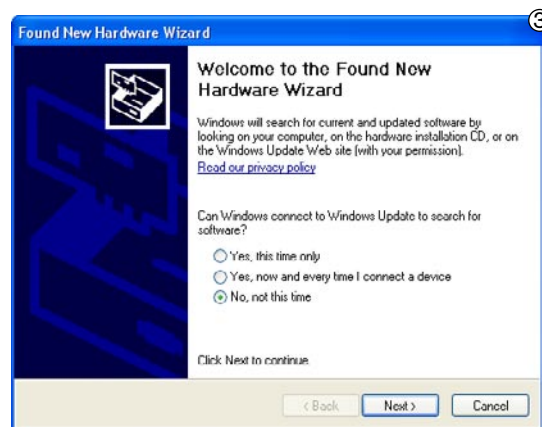


2. Follow the driver installer's on-screen directions.
3. At various points in this installation process, you may be notified that the driver being installed has not passed Windows Logo Testing ②. Click "Continue Anyway" to proceed with the installation.
4. Once the driver installer has completed, select "Yes, I want to shutdown my computer now" and click "Finish".
5. When your computer has turned off, disconnect the AC power cable and open your computer's case.
6. Touch your computer's metal chassis to ground yourself before coming in contact with any electronic components inside the computer. Uncontrolled discharge of excess static electricity may cause damage to electronic components.
7. Each unused PCI slot should have a metal bracket that covers the slot's accompanying access hole on the rear of the computer. Select one available PCI slot and remove its metal bracket. Be sure to save the bracket screw (brackets are usually held in place by one screw) as you will need it later.



TIP: Certain PCI slots on your motherboard may be sharing resources with some of your computer's other components (e.g. the USB controller or the AGP slot). This may result in performance issues that are often difficult to pin down and resolve. As a preventive measure, please check your motherboard's documentation in order to find an available PCI slot that does NOT internally share resources.

8. Insert your Delta PCI card into your chosen PCI slot. Secure the Delta PCI card in place using the bracket screw that was mentioned in the previous step. Close the computer case.
9. If your interface includes an external breakout box, attach it to the Delta PCI card using the supplied Host Adapter cable. If your external breakout box comes with a power adapter, connect it now. Finally, reconnect the computer's power cord and turn on the computer.
10. When Windows finishes booting, it will identify the new Delta hardware and will ask if you want to search the Internet for a driver. Select "No, not this time" and press "Next" ③.
11. Windows will display a "Found New Hardware" Wizard ④.
12. Choose "Install software automatically" and click "Next".
13. Once the wizard is completed, click "Finish".
14. Once the installation is complete, you will see a message stating, "Your new hardware is installed and ready to use".



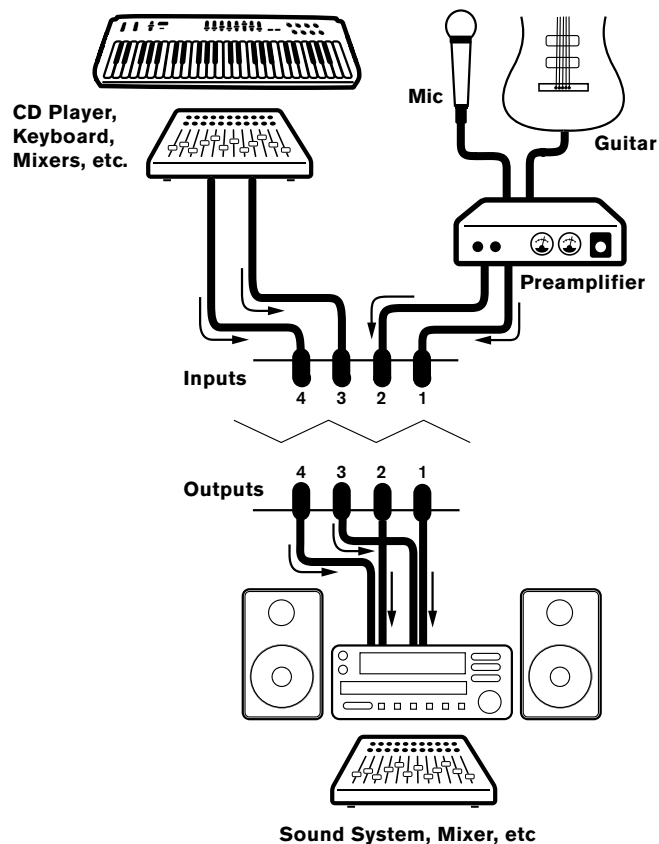
Mac OS X Installation

1. If possible, we recommend that you download the most recent Delta drivers by going to the Support > Drivers page at www.m-audio.com. This ensures that you have the newest drivers available. If you do not have Internet access, insert the Delta Series CD-ROM into your computer to install the drivers that came with your Delta interface.
 - a. If you are installing drivers from the Delta Series CD-ROM, a CD-ROM icon will appear on your desktop once the disc is inserted into your computer. Double-click this icon to view the contents of the disc. Next, double-click "Open Me." Finally, select your Delta interface from the drop-down menu on the welcome screen and click "Install".
 - b. If you are installing drivers from www.m-audio.com, the downloaded file should automatically mount and display its contents on the desktop. If this file does not mount automatically, simply double-click the file once it has finished downloading to view its contents. Next, double-click the installer package.
2. Follow the driver installer's on-screen instructions.
3. Click "Restart" once the installer has completed the installation.
4. Once your machine has booted, shut down the computer and disconnect its power cable.
5. Open your computer's case.
 6. Touch your computer's metal chassis to ground yourself before coming in contact with any electronic components inside the computer. Uncontrolled discharge of excess static electricity may cause damage to electronic components.
 7. Each unused PCI slot should have a metal bracket that covers the slot's accompanying access hole on the rear of the computer. Select one available PCI slot and remove its metal bracket. Be sure to save the bracket screw (brackets are usually held in place by one screw) as you will need it later.
 6. Insert your Delta PCI card into your chosen PCI slot. Secure the Delta PCI card in place using the bracket screw mentioned in the previous step. Close the computer case.
 7. If your Delta interface features an external breakout box, connect it to the Delta PCI card using the supplied Host Adapter cable. If the breakout box includes a power adapter, connect it now. Finally, reconnect the computer's power cord and turn on the computer.
 8. When the computer has restarted, your Delta interface will be ready to use.

Connecting Your Equipment to the Delta Interface

- Each Delta interface has a unique number of inputs and outputs which can be used for a variety of purposes. By default, analog outputs 1 and 2 serve as your “main” outputs. Connect channels 1 and 2 to the left and right inputs of your mixer, powered speakers, or other audio destination.
- All Delta interfaces accept line-level analog signals. Connect your line-level instruments (Keyboards, mixers, etc.) to any available analog input. If you wish to record microphones or the direct output of an electric guitar, bass, or other instrument-level device, you must first raise the signal to line-level using a preamplifier.
- If you own any devices with S/PDIF inputs or outputs, connect these devices to the S/PDIF connectors on the PCI Host Adapter Card or break-out cable (not applicable for Delta 44).

For more detailed information about all of the available inputs and outputs, please refer to your Delta interface's User Guide located on the Delta Series CD-ROM.



Opening the Delta Series Control Panel

PC users can access the Delta Control Panel by double-clicking the M-Audio icon in the system tray ^⑤. Mac OS X users can open the Control Panel by clicking the M-Audio icon found in the System Preferences panel ^⑥ or by double-clicking the M-Audio Delta link from the Applications folder.

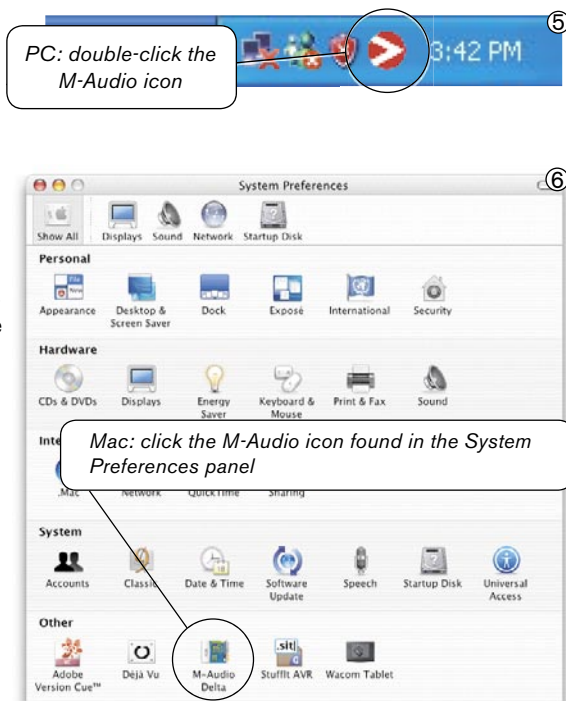
The default settings for the Delta Control Panel will ensure that your software's audio outputs 1/2 are routed to your Delta interface's physical outputs 1/2, while software outputs 3/4 are routed to the physical outputs 3/4, and so on. However, the Control Panel will allow you to alter the output routings if necessary as well as to configure various other options (digital sync source, sample rate, buffer size, etc.) In many cases, there will be no need to change the default settings.

When it's time to record an external source, such as a vocal, guitar track, or keyboard part, you will want to monitor your input. Monitoring will allow you to hear the signal being fed into the inputs while blending it with the output signals coming from the computer. This way, you can hear your own performance in the headphones as you play along to previously recorded parts playing back from your computer.

Start by selecting the Monitor Mixer radio button in the leftmost column of the Control Panel's Patchbay/Router tab. This routes the Monitor Mixer's output to the Delta interface's physical outputs 1/2. You can now use the Monitor Mixer to adjust and mix signals from the analog and digital inputs, as well as signals entering the mixer from your audio software.

Note: *Adjusting the levels in the Monitor Mixer does not affect the actual level of the signal being recorded into audio applications. Please adjust incoming signal levels at the sound source.*

For a full account of all Control Panel routings and functions, refer to the Delta interface's User Guide located on the Delta Series CD-ROM.



Additional Information and Support

The M-Audio website (www.m-audio.com) contains the latest Delta drivers as well as useful links to news stories, FAQs, and technical support. We recommend checking this site periodically to ensure you have the latest drivers and most up-to-date information about your M-Audio products.

Warranty Terms and Registration

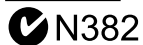
Warranty Terms

M-Audio warrants products to be free from defects in materials and workmanship, under normal use and provided that the product is owned by the original, registered user. Visit www.m-audio.com/warranty for terms and limitations applying to your specific product.

Warranty Registration

Immediately registering your new M-Audio product entitles you to full warranty coverage and helps M-Audio develop and manufacture the finest quality products available. Register online at www.m-audio.com/register to receive FREE product updates and for the chance to win M-Audio giveaways.

© 2007 Avid Technology, Inc. All rights reserved. Product features, specifications, system requirements and availability are subject to change without notice. Avid, M-Audio and Delta are either trademarks or registered trademarks of Avid Technology, Inc. All other trademarks contained herein are the property of their respective owners.



WARNING: This product contains chemicals, including lead, known to the State of California to cause cancer, and birth defects or other reproductive harm. ***Wash hands after handling.***

M-Audio USA 5795 Martin Rd., Irwindale, CA 91706	
Technical Support	web: www.m-audio.com/tech tel (pro products): (626) 633-9055 tel (consumer products): (626) 633-9066 fax (shipping): (626) 633-9032
Sales	e-mail: sales@m-audio.com tel: 1-866-657-6434 fax: (626) 633-9070
Web	www.m-audio.com

M-Audio U.K. Floor 6, Gresham House, 53 Clarendon Road, Watford WD17 1LA, United Kingdom	
Technical Support	e-mail: support@maudio.co.uk tel: (Mac support): +44 (0)1765 650072 tel: (PC support): +44 (0)1309 671301
Sales	tel: +44 (0)1923 204010 fax: +44 (0)1923 204039
Web	www.maudio.co.uk

M-Audio France Floor 6, Gresham House, 53 Clarendon Road, Watford WD17 1LA, United Kingdom	
Renseignements Commerciaux	tel : 0 810 001 105 e-mail : info@m-audio.fr
Assistance Technique	PC : 0 0820 000 731 MAC : 0 0820 391 191
Assistance Technique	e-mail : support@m-audio.fr mac@m-audio.fr fax : +33 (0)01 72 72 90 52
Site Web	www.m-audio.fr

M-Audio Germany Kuhallmand 34, D-74613 Ohringen, Germany	
Technical Support	e-mail: support@m-audio.de tel: +49 (0)7941 - 9870030 fax: +49 (0)7941 98 70070
Sales	e-mail: info@m-audio.de tel: +49 (0)7941 98 7000 fax: +49 (0)7941 98 70070
Web	www.m-audio.de

M-Audio Canada 1400 St-Jean Baptiste Ave. #150, Quebec City, Quebec G2E 5B7, Canada	
Technical Support	email: techcanada@m-audio.com phone: (418) 872-0444 fax: (418) 872-0034
Sales	e-mail: infocanada@m-audio.com phone: (866) 872-0444 fax: (418) 872-0034
Web	www.m-audio.ca

M-Audio Japan アビッドテクノロジー株式会社 エムオーディオ事業部 〒460-0002 愛知県名古屋市中区丸の内2-18-10 Avid Technology K.K. 2-18-10 Marunouchi, Naka-Ku, Nagoya, Japan 460-0002	
カスタマーサポート (Technical Support)	e-mail : win-support@m-audio.jp e-mail (Macintosh 環境専用 : mac-support@m-audio.jp tel : 052-218-0859 (10:00~12:00/13:00~17:00)
セールスに関するお問い合わせ (Sales)	e-mail: info@m-audio.jp tel: 052-218-3375 fax: 052-218-0875
Web	www.m-audio.jp